



Using ASPM to Determine Airport Arrival Rates and Historical Demand

18 April 2006


ederal Aviation Administration - Microsoft Internet Explorer

Edit View Favorites Tools Help

Back Forward Stop Refresh Home Search Favorites

Address: <http://www.apo.data.faa.gov/> Go Links

Search 18 blocked ABC Check AutoLink AutoFill Options

 **Federal Aviation Administration** [Back to Aviation Data & Statistics](#)


FAA Operations & Performance Data

FAA Operations and Performance Data provides access to historical traffic counts, forecasts of aviation activity, and delay statistics. Many of the following databases contain proprietary information and require a registered user name and password. You may [request a login from FAA](#).

- [Air Traffic Activity System \(ATADS\)](#)
- [Terminal Area Forecast \(TAF\)](#)
- [Aviation System Performance Metrics \(ASPM\) - Complete](#)
- [Aviation System Performance Metrics \(ASPM\) - Lite](#)
- [Operational Network \(OPSNET\)](#)
- [Flight Schedule Data System \(FSDS\)](#)
- [Enhanced Traffic Management System Counts \(ETMSC\)](#)
- [Airline Service Quality Performance \(ASQP\)](#)
- [Air Traffic Control \(ATC\)](#)

• [Presentations](#)

[firstgov.gov](#) | [Privacy Policy](#) | [Web Policies & Notices](#) | [Site Map](#) | [Contact Us](#) | [Frequently Asked Questions](#) | [Forms](#)

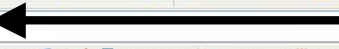
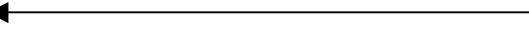
 **U.S. Department of Transportation**
Federal Aviation Administration
800 Independence Avenue, SW
Washington, DC 20591
1-866-TELL-FAA (1-866-835-5322)

Readers & Viewers: [PDF Reader](#) | [MS Word Viewer](#) | [MS PowerPoint Viewer](#) | [MS Excel Viewer](#) | [WinZip](#)

Internet

<http://www.apo.data.faa.gov/>

Airport Arrival Rates





[Back to FAA Operations & Performance Data Home](#)

Aviation System Performance Metrics (ASPM)

Select a Different Operations & Performance Application

Aviation System Performance Metrics (ASPM) - Complete

This area contains proprietary information and requires a registered user name and password. [You may request a login from FAA by following this link.](#)

User Name

Password

Wireless Network Connection is now connected

Connected to: motorola 27A
 Signal Strength: Excellent


http://www.apo.data.faa.gov/aspm/ASPMframe.asp - Microsoft Internet Explorer

File Edit View Favorites Tools Help

Back Forward Stop Home Search Favorites RSS Print Mail News Groups

Address http://www.apo.data.faa.gov/aspm/ASPMframe.asp Go Links

Google Search 18 blocked Check Look for Map AutoFill Options

 **Federal Aviation Administration** [Back to FAA Operations & Performance Data Home](#)

Aviation System Performance Metrics (ASPM) [Select a Different Operations & Performance Application](#)

- Management Reports
- Flash Reports
- **Airport Efficiency**
- AAR/ADR Calculator
- Analysis
- Causality
- Weather Factors
- Enroute
- Taxi Times
- Individual Flights
- Cancelled Flights
- Download
- Data Reference Guide
- Information
- What's New

ABOUT ASPM

Click Here For Current ASPM Status

Aviation System Performance Metrics (ASPM) provides information on individual flight performance and information on airport efficiency. The data is updated daily.

Note: Metrics computed in ASPM are developed comparing actual time to scheduled time except for taxi, which are computed by comparing actual time to an unimpeded time.

FY 2005 Airline Presentation : [PDF](#) [PowerPoint](#)

Done Internet

start http://www.apo... Presentation2 My Pictures 11:38 AM

http://www.apo.data.faa.gov/aspm/ASPMframe.asp - Microsoft Internet Explorer

File Edit View Favorites Tools Help

Address http://www.apo.data.faa.gov/aspm/ASPMframe.asp

Google Search 18 blocked Check Look for Map AutoFill Options

Federal Aviation Administration Back to FAA Operations & Performance Data Home

Aviation System Performance Metrics (ASPM) Select a Different Operations & Performance Application

- Management Reports
- [Flash Reports](#)
- Airport Efficiency
- AAR/ADR Calculator
- Analysis
- Causality
- Weather Factors
- Enroute
- Taxi Times
- Individual Flights
- Cancelled Flights
- Download
- Data Reference Guide
- Information
- What's New

Airport Efficiency ASPM 75 Reset Yearly Monthly Daily Range

Find: Metro 8 Metro 8 FY 05

Sun	Mon	Tue	Wed	Thu	Fri	Sat
2	3	4	5	6	7	8
9	10	11	12	13	14	15
16	17	18	19	20	21	22
23	24	25	26	27	28	29
30						

Selected Dates:

April 2006

SAER TAER

Airport By Period Ranking
 Summary By Hour Comparison
 Graph By Qtr. Hour Configuration
 Counts Performance IMC VMC %
 Detail Roll 30 Min AAR ADR %

Actual > Rate Actual < Rate Taxi Times
 Rate > Optim. Rate < Redu. Actual < Dem.
 Frequency Capacity Schedule
 AER Delays Analysis

Weather Conditions: All

Runway Configuration: All

No Pagebreak
 Definitions

219 airoarfts loaded. 24 Hours 07:00 - 21:59

Note: Pop-up blocker needs to be disengaged

http://www.apo.data.faa.gov/aspm/management/flash/flashFrame.asp Internet



Aviation System Performance Metrics (ASPM)

Select a Different Operations & Performance Application

- [Management Reports](#)
- [Flash Reports](#)
- [Airport Efficiency](#)
- [AAR/ADR Calculator](#)
- [Analysis](#)
- [Causality](#)
- [Weather Factors](#)
- [Enroute](#)
- [Taxi Times](#)
- [Individual Flights](#)
- [Cancelled Flights](#)
- [Download](#)
- [Data Reference Guide](#)
- [Information](#)
- [What's New](#)

Airport Efficiency

ASPm 75 Reset

Yearly Monthly Daily Range

Find: OEP 35 Metro 8 Metro 8 FY 06

ABQ - Albuquerque Intl Sunport
ANC - Ted Stevens Anchorage Intl
ATL - Hartsfield-Jackson Atlanta Intl
AUS - Austin-Bergstrom Intl
BDL - Bradley Intl

Dates Year
From: 2005 Calendar
To: 2005 Fiscal

Airport By Period Ranking
 Summary By Hour Comparison
 Graph By Qtr.Hour Rwy.Usage
 Counts Performance IMC VMC %
 Roll 30 Min AAR ADR %

Actual>Rate Actual<Rate Taxi Times
 Rate>Optim. Rate<Redu. Actual<Dem.
 Frequency Capacity Schedule
 AER Delays

Weather Conditions
All

Runway Configuration
All

Actual From:
 ETMS Apt.

No Pagebreak
 Definitions

Run

Ready: From: 05 To: 23



[Back to FAA Operations & Performance Data Home](#)

Aviation System Performance Metrics (ASPM)

Select a Different Operations & Performance Application

- Management Reports
- Flash Reports
- Airport Efficiency
- AAR/ADR Calculator
- Analysis
- Causality
- Weather Factors
- Enroute
- Taxi Times
- Individual Flights
- Cancelled Flights
- Download
- Data Reference Guide
- Information
- What's New

Airport Efficiency ASPM 75 Reset

Find: DEP 35 Metro 8 Metro 8 FY 08

ABQ - Albuquerque Intl Sunport
 ANC - Ted Stevens Anchorage Intl
ATL - Hartsfield-Jackson Atlanta Intl
 AUS - Austin-Bergstrom Intl
 BDL - Bradley Intl

Dates Year
 From: 2005 To: 2005
 Calendar Fiscal

Airport By Period Ranking
 Summary By Hour Comparison

Weather Conditions: All
 By Hour By Qtr/ Hour

http://www.apo.data.faa.gov/aspm/spp-server.asp?cmd=rpt&main=air&sub=adraarq&set=etms&urate=0.0 - Microsoft ...

Address http://www.apo.data.faa.gov/aspm/spp-reps/score-adraar.asp?line=SELECT+*+FROM+SC_QTR+WHERE++CYEAR>^2005+AND+

Google Search 25 blocked Check AutoLink AutoFill Options

Yearly Actual > Rate Analysis By Qtr. Hour Report

From 2005 To 2005 : 'ATL' : Hour>=05 : Hour<=23 : Calendar Year
Actual : ETMS Reported Operations

Airport	Local Hour	Qtr	Total Periods	Departures			Arrivals						
				Periods Where Actual Greater Than ADR	Avg Actual	Avg ADR	% Periods Where Actual Greater Than ADR	% of Dps Where Actual Greater Than ADR	Periods Where Actual Greater Than AAR	Avg Actual	Avg Cap AAR	% Periods Where Actual Greater Than Cap.AAR	% of W A Gr.

Done Internet

Cut Ctrl+X
Copy Ctrl+C
Paste Ctrl+V
Select All Ctrl+A
Find (on This Page)... Ctrl+F

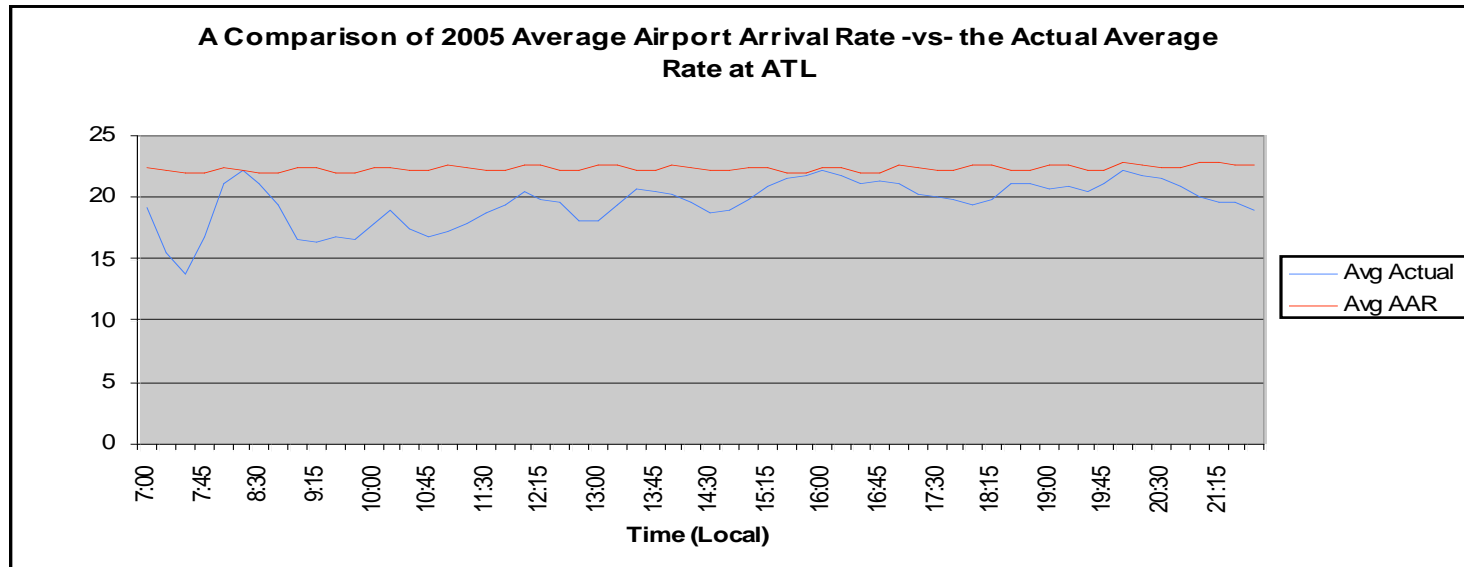
Yearly Actual Rate Analysis By Qtr. Hour Report

From 2005 To 2005 : 'CVG' : Hour>=05 : Hour<=23 : Calendar Year
Actual : ETMS Reported Operations

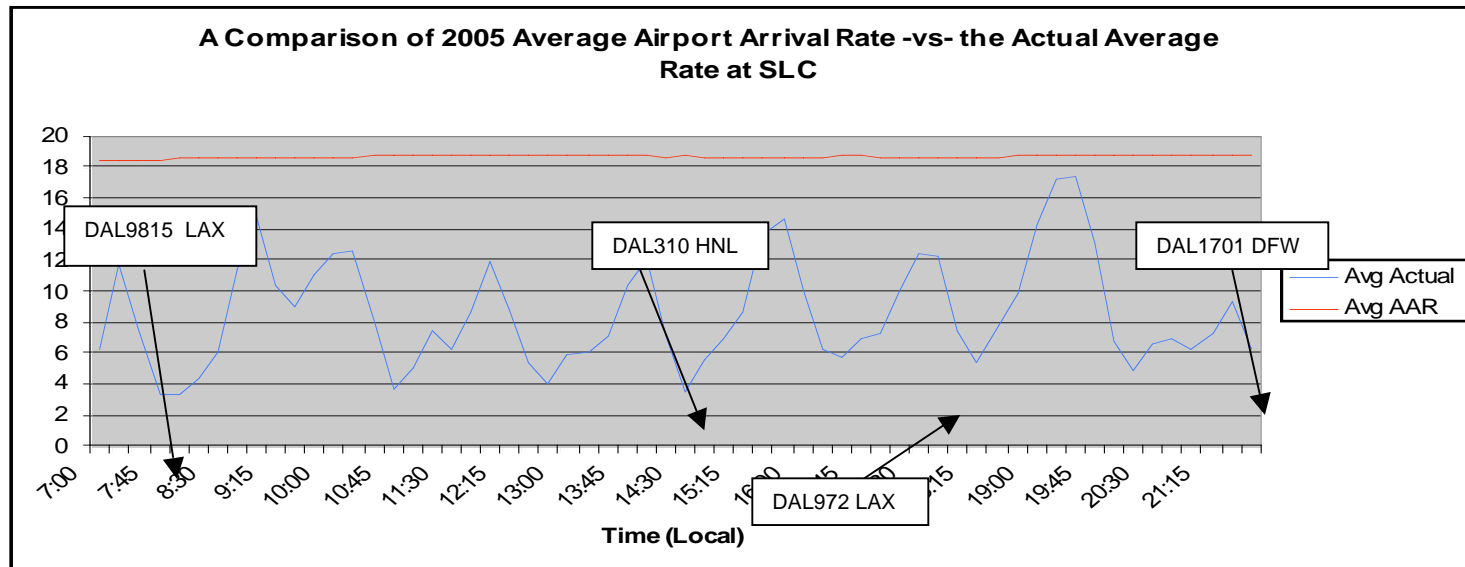
Airport	Local Hour	Qtr	Total Periods	Departures				Arrivals				Airport						
				Periods Where Actual Greater Than ADR	Avg Actual	Avg ADR	% Periods Where Actual Greater Than ADR	% of Deps Where Actual Greater Than ADR	Periods Where Actual Greater Than Cap.AAR	Avg Actual	Avg Cap AAR	% Periods Where Actual Greater Than Cap.AAR	% of Arrs Where Actual Greater Than Cap.AAR	Periods Where Actual Greater Than ADR+ Cap.AAR	Avg Actual Ops	Avg ADR+ Cap.AAR	% Periods Where Actual Greater Than ADR+ Cap.AAR	% of Ops Where Actual Greater Than ADR+ Cap.AAR
CVG	7	1	365	0	5.45	16.73	0.00	0.00	0	9.48	19.86	0.00	0.00	0	14.93	36.59	0.00	0.00
CVG	7	2	365	4	7.11	16.69	1.10	0.10	2	12.54	19.84	0.55	0.08	1	19.64	36.53	0.27	0.01
CVG	7	3	365	1	4.83	16.64	0.27	0.02	26	15.77	19.84	7.12	0.76	1	20.60	36.49	0.27	0.02
CVG	7	4	365	0	5.22	16.63	0.00	0.00	46	16.28	19.83	12.60	1.37	0	21.50	36.46	0.00	0.00
CVG	8	1	365	3	8.49	16.69	0.82	0.08	8	11.08	19.84	2.19	0.22	1	19.56	36.53	0.27	0.01
CVG	8	2	365	3	3.52	16.69	0.82	0.07	1	3.63	19.83	0.27	0.04	0	7.15	36.52	0.00	0.00
CVG	8	3	365	4	3.15	16.70	1.10	0.18	0	4.04	19.85	0.00	0.00	0	7.19	36.54	0.00	0.00
CVG	8	4	365	14	7.81	16.69	3.84	0.84	1	8.45	19.83	0.27	0.03	0	16.26	36.52	0.00	0.00
CVG	9	1	365	275	19.43	16.75	75.34	21.76	1	6.67	19.78	0.27	0.10	2	26.10	36.53	0.55	0.02
CVG	9	2	365	299	20.21	16.72	81.92	27.93	2	7.31	19.73	0.55	0.04	10	27.52	36.45	2.74	0.29
CVG	9	3	365	195	16.53	16.62	53.42	11.57	1	12.12	19.66	0.27	0.01	21	28.65	36.28	5.75	0.48
CVG	9	4	365	113	14.28	16.65	30.96	5.50	8	13.37	19.65	2.19	0.18	20	27.65	36.30	5.48	0.43
CVG	10	1	365	71	12.34	16.68	19.45	3.98	5	8.94	19.61	1.37	0.15	14	21.28	36.29	3.84	0.39
CVG	10	2	365	11	4.31	16.70	3.01	0.92	2	3.37	19.60	0.55	0.04	6	7.68	36.30	1.64	0.18
CVG	10	3	365	9	3.28	16.64	2.47	0.49	1	5.32	19.63	0.27	0.03	1	8.60	36.27	0.27	0.08
CVG	10	4	365	10	7.89	16.64	2.74	0.49	4	10.64	19.63	1.10	0.10	1	18.53	36.27	0.27	0.08
CVG	11	1	365	221	17.87	16.72	60.55	14.90	1	10.51	19.68	0.27	0.04	27	28.38	36.39	7.40	0.56
CVG	11	2	365	106	13.94	16.72	29.04	6.18	5	10.78	19.68	1.37	0.14	10	24.72	36.40	2.74	0.31
CVG	11	3	365	11	5.56	16.62	3.01	0.79	8	13.04	19.66	2.19	0.21	7	18.60	36.28	1.92	0.36
CVG	11	4	365	23	11.04	16.62	6.30	1.10	2	9.05	19.66	0.55	0.04	6	20.08	36.28	1.64	0.26

Selects all items on this page.

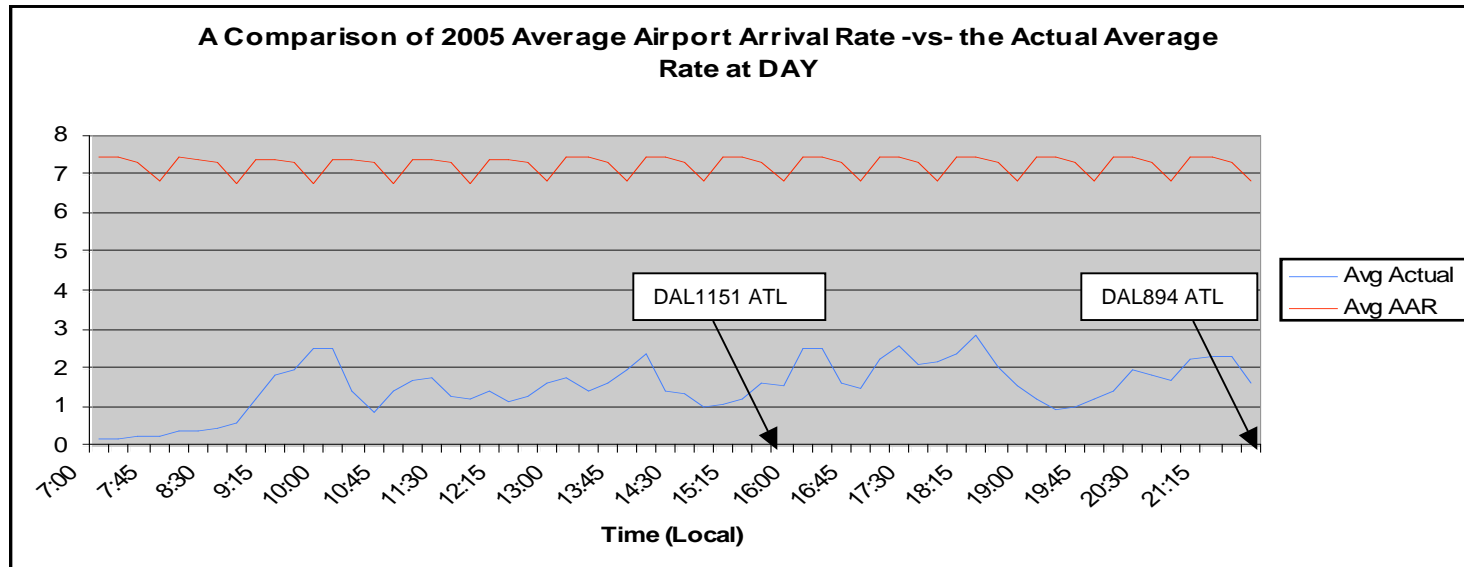
Average 2005 Airport Rates



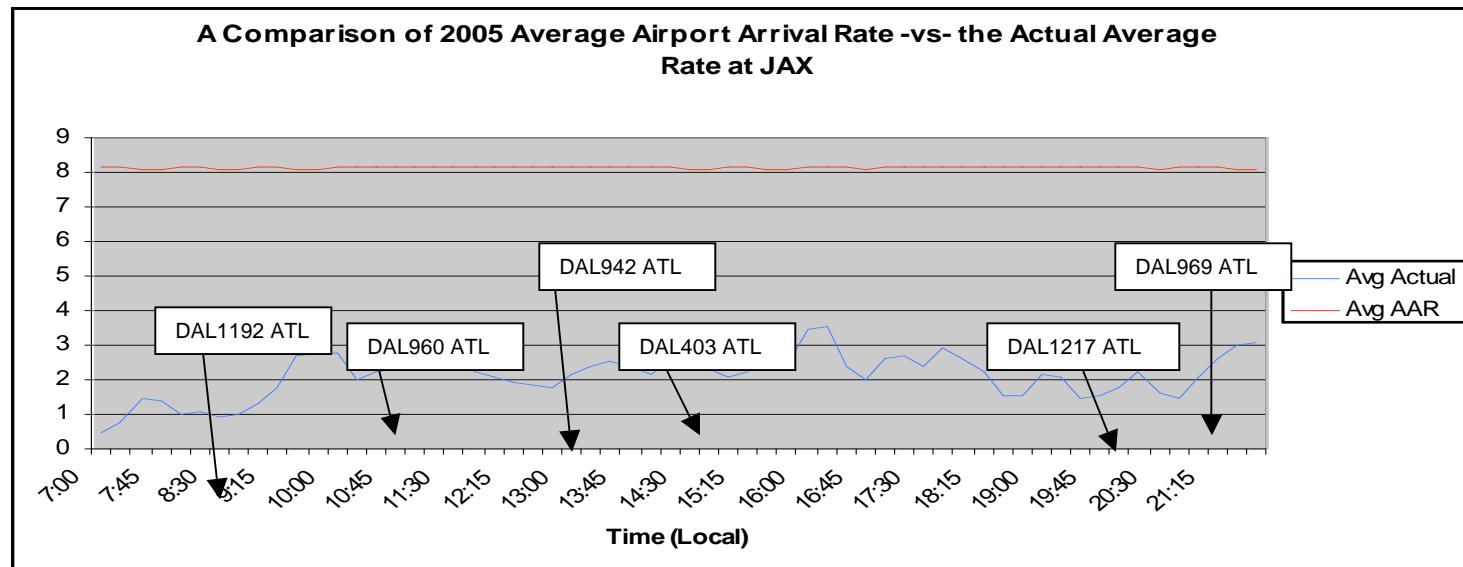
Average 2005 Airport Rates



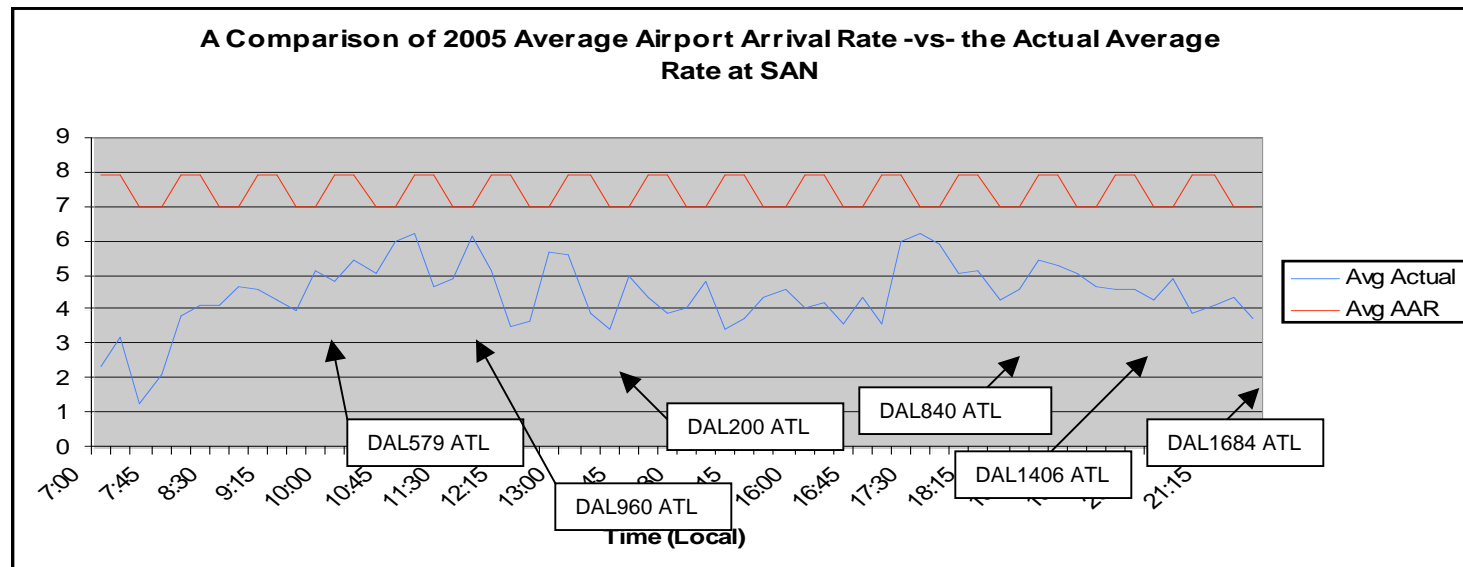
Average 2005 Airport Rates



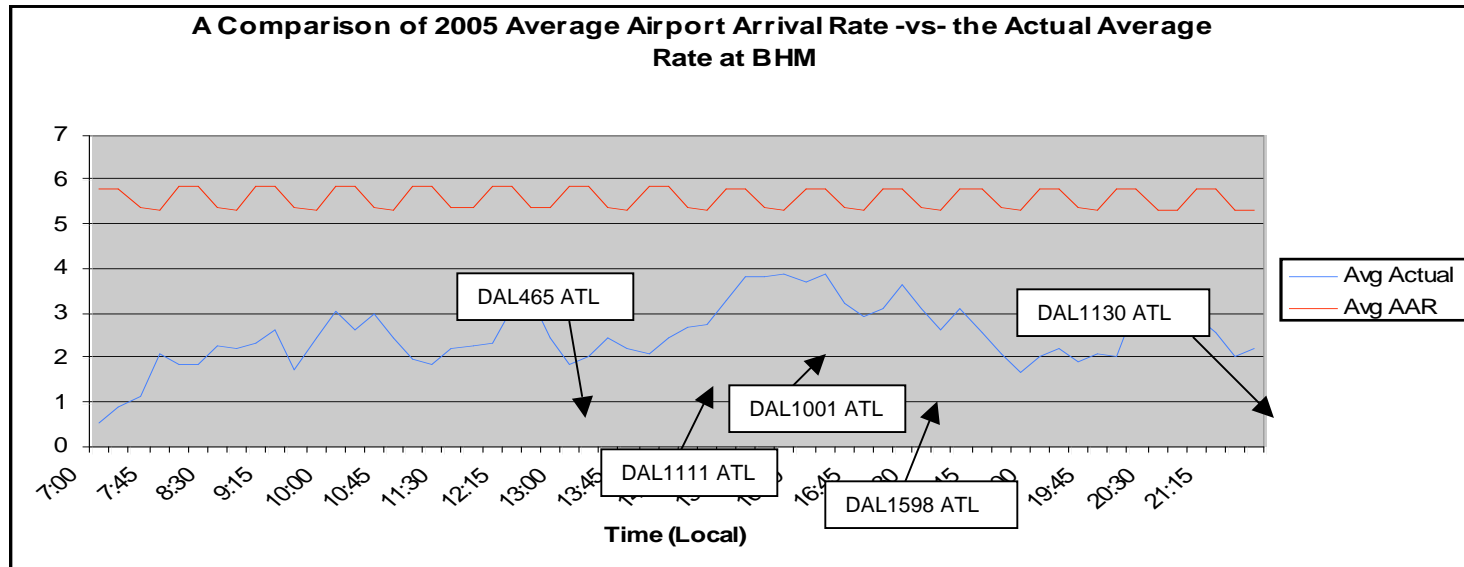
Average 2005 Airport Rates



Average 2005 Airport Rates



Average 2005 Airport Rates



Average 2005 Airport Rates

