

Institute Update and Georgia Tech's Role in Shaping Public Policy

President G. Wayne Clough
Georgia Tech Advisory Board
November 8, 2002

Student caliber continues to rise

- 16,400 total enrollment
 - 15,800 on Atlanta campus
 - 600 in southeast Georgia, France, Singapore, or online
- 2,234 freshmen
 - 1336 average SAT score
 - 3.8 average GPA (of 4.0)



67 new faculty 16 endowed chairs

William T. Trotter,
Mathematics



Anselm Griffin,
Textile & Fiber
Engineering



Richard DeMillo,
Dean, College of
Computing



William Wepfer, Vice
Provost, Distance
Learning and
Professional Education



Judith Curry,
Earth &
Atmospheric
Sciences



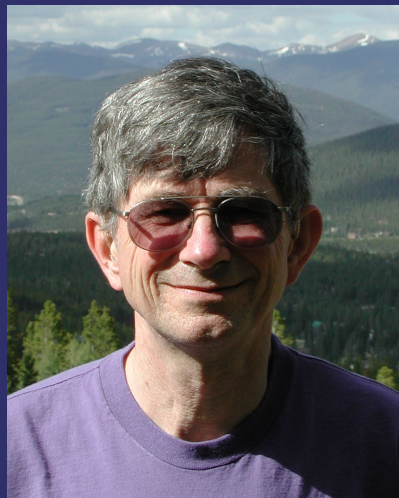
Awards honor outstanding faculty

13 NSF CAREER Awards

Presidential Early Career Awards
for Scientists and Engineers:

John Zhang, Chem & Bio

Reggie DesRoches, Civil Eng



Robert Dickinson, Earth & Atmospheric
Sciences: first Tech professor to be a member
of both the National Academy of Engineering
and the National Academy of Sciences.

Nation's 9th best public university



- 9th among public universities; 38th among all universities, *U.S. News & World Report*.
- Graduate rankings strong:
 - Engineering ranks 4th; all ranked schools in top 15.
 - Science programs rank largely in the top 10%.
 - Computing ranks 12th.
 - Management ranks 39th, all ranked programs improve.
- Architecture ranks 5th in *Almanac of Architecture and Design* study.

Improving the Institute

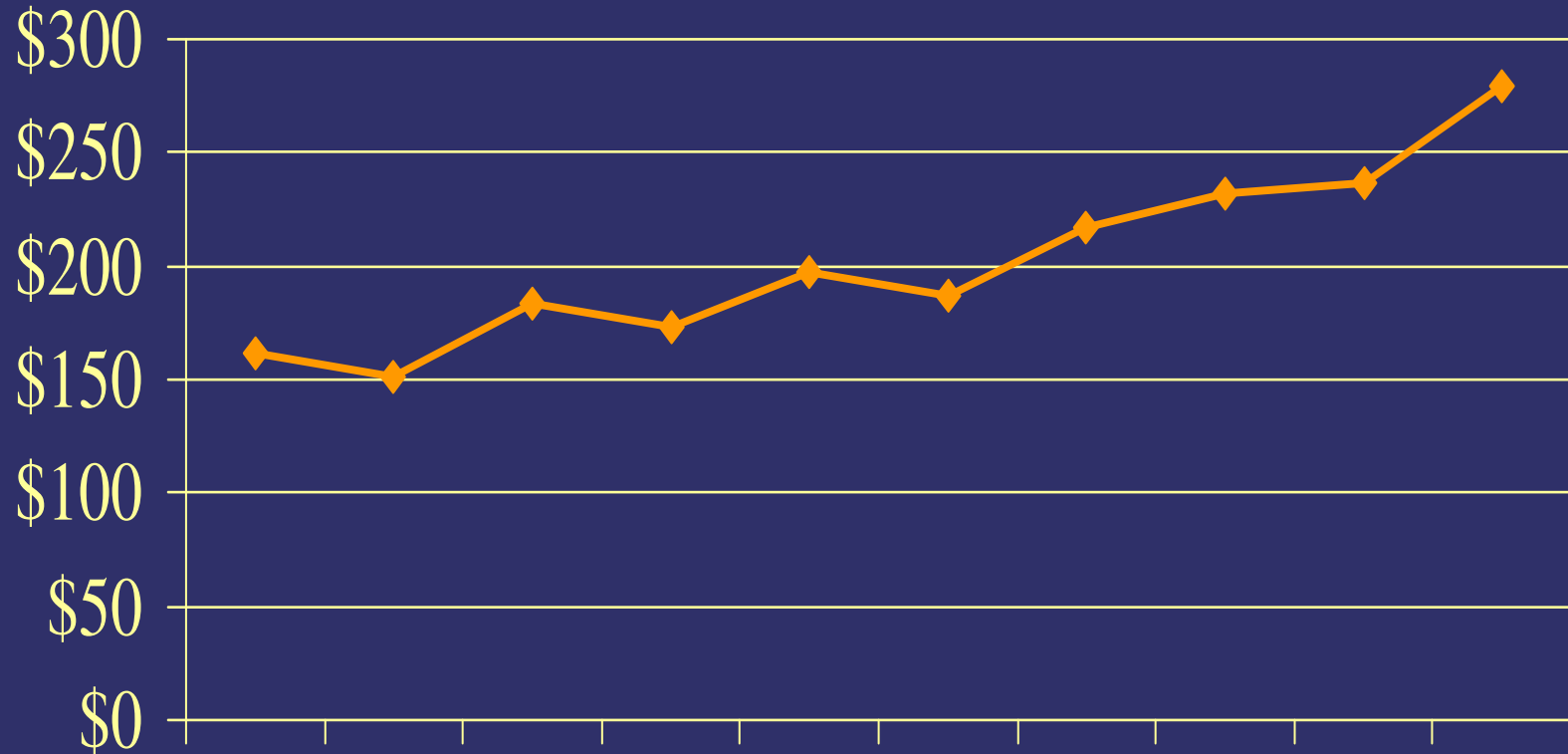
- New strategic plan
- Campus safety
- Academic accountability
- Greek system
- Commercializing research
- Undergraduate initiative: second year
- Enhancing vitality of campus core



Research

Research awards increase

In millions



FY93
FY94
FY95
FY96
FY97
FY98
FY99
FY00
FY01
FY02

Entomopter



Midterm grades prove helpful

- 91% of last year's freshmen are back
- Number of students receiving a D or F in core courses dropped from 11% to 9%.



Students becoming more aware of the support services that are available to them.

Undergraduate research expands



- New website alerts students to opportunities.
- 108 students received funds from President's undergraduate research initiative.
- Almost 10% of undergraduates received academic credit for supervised research activities.

A new focal point for campus

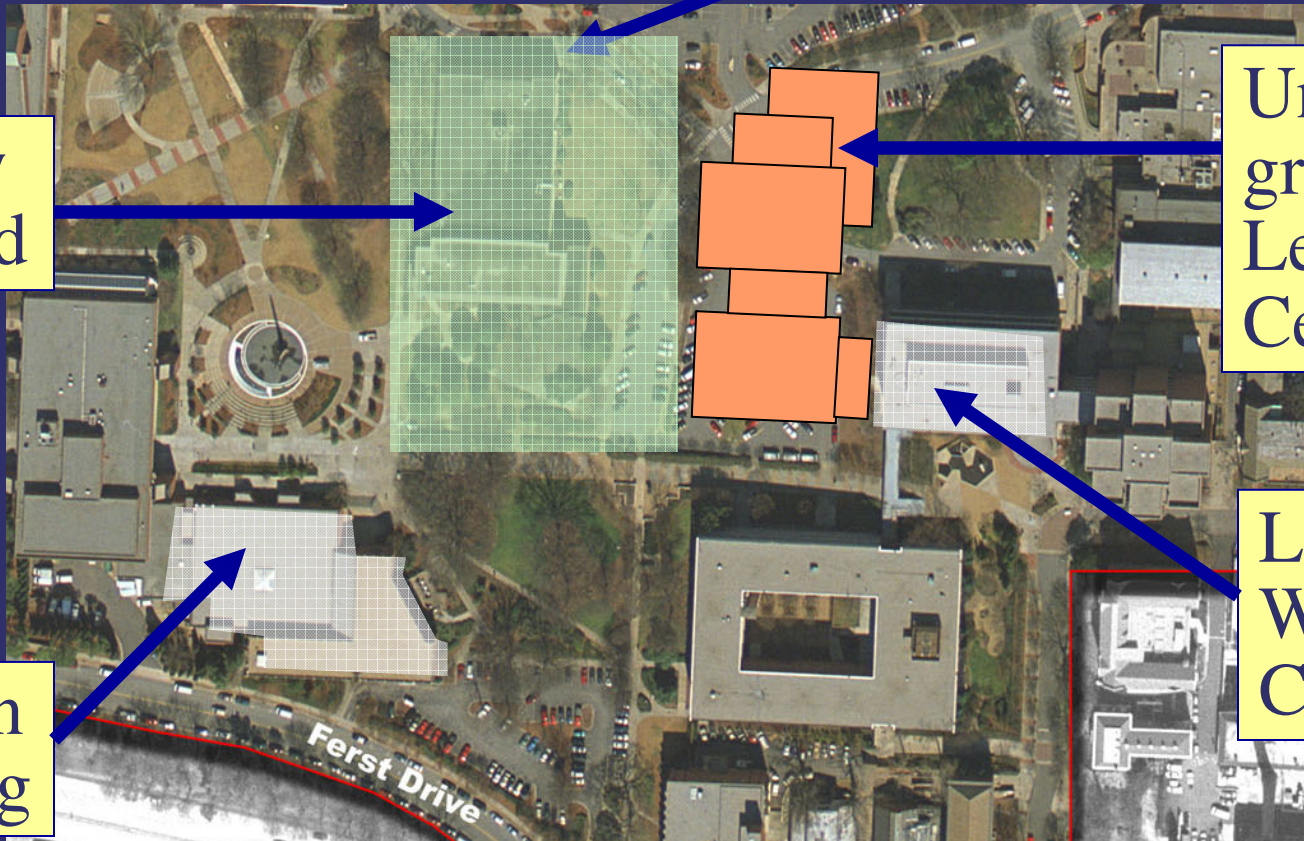


New Quad

Under-graduate Learning Center

Houston Building

Library West Commons

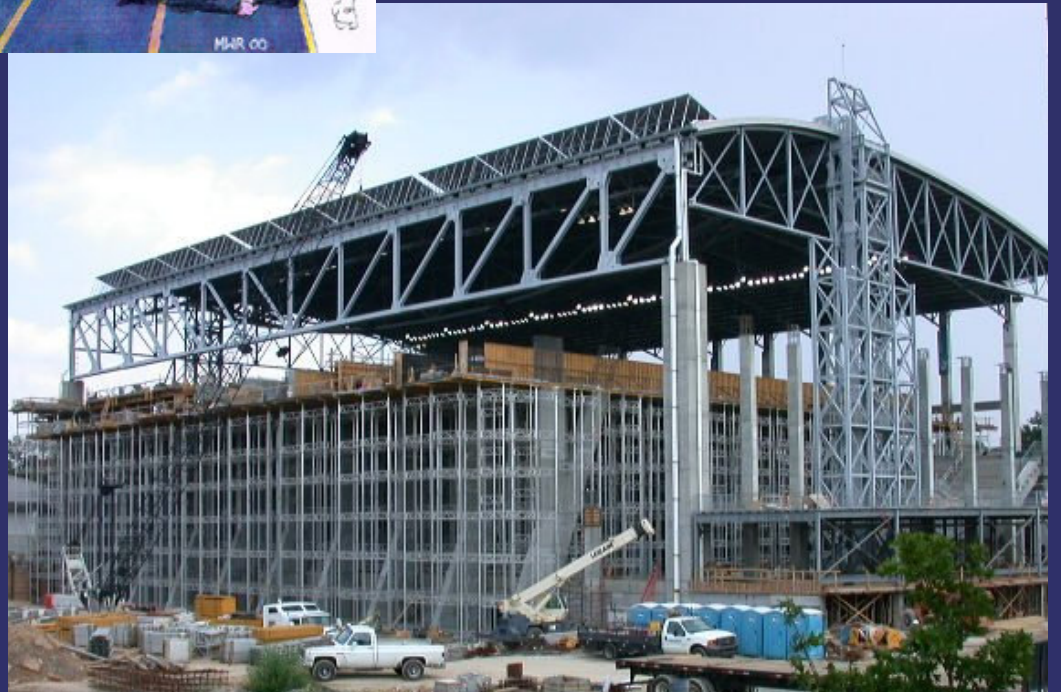




A new
focal point

for student*
recreation

* and faculty and staff



Facilities

Technology Square tops out



Facilities

Life Sciences Complex takes shape



Ford Motor
Company
ES&T

Whitaker
Biomedical
Engineering



President Bush Views Tech's Advanced Homeland Defense Technology

A packed house of about 2,000 invited guests greeted President George W. Bush with thunderous applause, at Georgia Tech's O'Keefe gymnasium nearly drowning out the music that signaled his entrance.

In town for a fund-raiser on behalf of his fellow Republican, Congressman Saxby Chambliss, the President

"serving national needs"



President George W. Bush views a demonstration of first-response technologies.

Georgia Tech civil engineers assess the damage at Ground Zero with an advanced digital data system they developed.



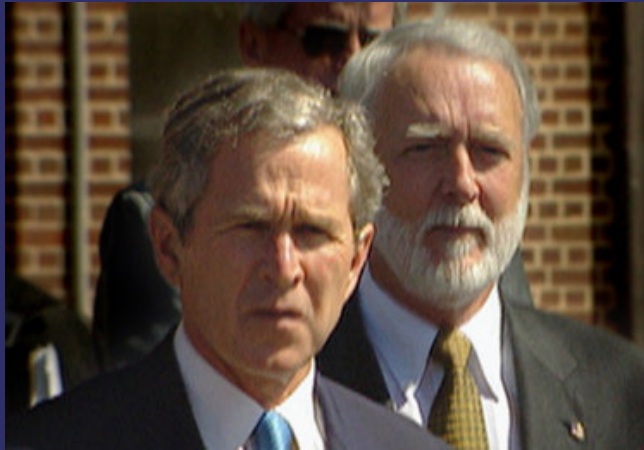
"shaping national policy"



Georgia Tech President Named to Presidential Policy Council

President George W. Bush today appointed G. Wayne Clough, President of the Georgia Institute of Technology, to his Presidential Committee on Science and Technology. Dr. Clough is one of 24 members of the prestigious board and is the first Georgia Tech representative to serve on the Council. Another Atlantan joining Dr. Clough on the Council is Dr. Walter F. Massey,

Dr. Clough also noted the importance of having two Atlanta representatives on the Council. "Walter Massey is highly regarded in Washington and has been instrumental in shaping national policy for years. Our ability to focus on the issue of research and technology transfer-through examples like the Georgia Research Alliance, Versarcel, and the Cancer Initiative



GWC Policy Activities

- President's Council of Advisors on Science and Technology (PCAST)
- Executive Committee, U.S. Council on Competitiveness
- Markle Foundation - National Security in the Information Age
- Chair - NAE Project "The Engineer in 2020"
- Chair – Governor's Blue Ribbon Natural Gas Task Force
- Chair - Mayor's Clean Water Advisory Panel

Shaping policy

In Public Policy



Ivan Allen
College Dean
Sue Rosser is a
national expert
on women in
science and
engineering.

HTS Chair Willie Pearson and Public Policy Professor Susan Cozzens are the present and immediate past chairs of the Committee on Science, Engineering and Public Policy of the American Association for the Advancement of Science.



Shaping policy

In National Security

Edward Reedy, director of the Georgia Tech Research Institute, serves on the Army Science Board.



Center for International Strategy, Technology, and Policy, directed by John Endicott, hosted a rare visit of a high-level government delegation from North Korea.

Shaping policy

In Engineering



ISyE Professors Bill Rouse and Chip White are nationally recognized experts on intelligent transportation systems and the security issues they pose.

Civil Engineering Professor Mike Meyer is an expert on transportation policy and the environment.



Shaping policy

In Business and Management

GT CIBER provides data about business standards, technological opportunities, and threats in the global marketplace.



Management Professor Marie Thursby has been a research associate with the National Bureau of Economic Research for 15 years.

Shaping policy

In Information Technology



Dean of Computing Rich DeMillo provides policy expertise on defending against cyber attacks.



Sy Goodman, Computing and International Affairs, provides information technology expertise to foreign governments.

Helena Mitchell of GCATT advises state and federal policymakers on telecommunications issues.



Shaping policy

In Economic Development

The Economic Development Institute (EDI) helps Georgia communities evaluate future growth trends and assists them with economic development planning.



EDI Principal Research Associate Jan Youtie has conducted economic development studies for the U.S. Department of Commerce, the State Office of Planning and Budget, and the Aspen Institute.

Shaping policy

At the State and Local Level

Public Policy Professor Michael Farmer, an expert on the sustainability of natural resources, advises policymakers from Georgia, Alabama, and Florida on shared water resources.



Larry Keating, Architecture, works with Atlanta neighborhoods and advises community leaders on improving the quality of life for minority and low-income residents.



For discussion

Questions on Our National Role

- What is Georgia Tech's appropriate role in helping to shape policy at the national level?
- What venues serve this role best?
- What do we bring to the table that other players (MIT, Harvard) do not?
- What cautions should we be aware of as we attempt to develop our national policy role?

For discussion

Questions on State/Local Role

- What is our role at the state and local level?
- How do we balance against national efforts?
- What do we bring to the table that UGA and GSU do not?
- What cautions should we be aware of as we develop our state and local policy role?

For discussion

Questions on Policy Education

- How much of our policy agenda should be reflected in our undergraduate and graduate curricula?
- What should the typical engineering or science student learn about national and state policy at Georgia Tech?