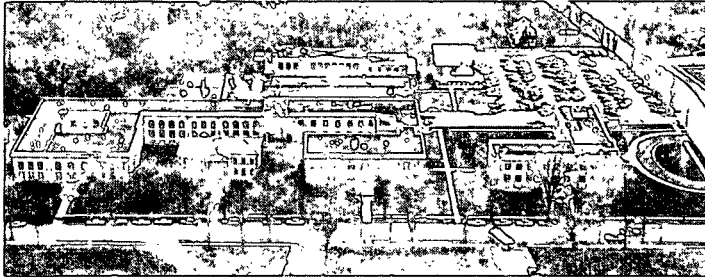


2694-2

#44

BASE-LINE



1
 THE INSTITUTE OF PAPER CHEMISTRY, APPLETON, WISCONSIN

CONTINUOUS BASE-LINE STUDY (MODIFIED)
 (MILL CORRUGATING MEDIUM DATA FOR APRIL, MAY, JUNE, 1981)

2
 Project 2694-2

3
 Report Forty-Four

A Progress Report

to

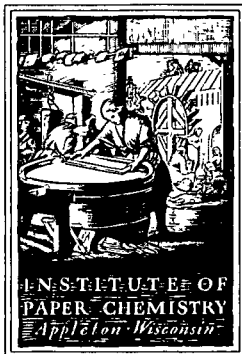
FOURDRINIER KRAFT BOARD GROUP

OF THE

AMERICAN PAPER INSTITUTE

*PS
 Please see with
 Bob*

August 31, 1981



THE INSTITUTE OF PAPER CHEMISTRY
Post Office Box 1039
Appleton, Wisconsin 54912
Phone: 414/734-9251

August 31, 1981

Project 2694-2

Dear Sir:

We are enclosing a copy of the following report to the Fourdrinier Kraft Board Group of the American Paper Institute:

Report Forty-Four, Project 2694-2, a progress report
entitled "Continuous Baseline Study of Mill
Corrugating Medium; Data for April, May
June, 1981" dated August 31, 1981

The code identities for paper machines in your company from which data were submitted for evaluation are given on the inside of the front cover of this report.

Sincerely,

Roger H. Van Eperen
Manager, Materials Testing Laboratory
Paper Materials & Systems Division

RHV/sb
Enclosure

NONPARTICIPANT IN THIS REPORT

BASE-LINE
2nd QUARTER, 1981

THE INSTITUTE OF PAPER CHEMISTRY

Appleton, Wisconsin

CONTINUOUS BASE-LINE STUDY (MODIFIED)
(MILL CORRUGATING MEDIUM DATA FOR APRIL, MAY, JUNE, 1981)

Project 2694-2

Report Forty-Four

A Progress Report

to

FOURDRINIER KRAFT BOARD GROUP

OF THE

AMERICAN PAPER INSTITUTE

Information contained herein is furnished for your internal use only and is not to be disseminated or disclosed outside your company or copied or otherwise reproduced without the express written permission of The Institute of Paper Chemistry

August 31, 1981

TABLE OF CONTENTS

	Page
SUMMARY	1
INTRODUCTION	2
PRESENTATION OF DATA	2
Presentations (Tables):	
Tables I-II-III. 26-Lb Corrugating Medium, Monthly Averages of Mill Data	3-4-5
Table IV. Data on Conditioning and Testing Environments	6
APPENDIX. NOTES A, B, C, D, AND E USED IN TABULATION OF MILL DATA	8

THE INSTITUTE OF PAPER CHEMISTRY

Appleton, Wisconsin

CONTINUOUS BASE-LINE STUDY (MODIFIED)
(MILL CORRUGATING MEDIUM DATA FOR APRIL, MAY, JUNE, 1981)

SUMMARY OF 26-LB CORRUGATING MEDIUM DATA
(MARCH-JUNE, 1981)

Test	March		April		May		June	
	Total	Recycled	Total	Recycled	Total	Recycled	Total	Recycled
Moisture content, %	Max. ^a 9.5	8.0	9.4	6.9	9.3	7.0	9.5	7.2
	Min. ^a 3.4	3.4	4.0	4.0	3.9	3.9	3.9	3.9
	Av. ^b 6.4(37)	5.6(12)	6.5(36)	5.5(10)	6.5(38)	5.7(11)	6.6(36)	5.8(11)
Adj. basis weight, 2 lb/M ft ²	Max. ^a 27.7	27.7	27.7	27.7	27.8	27.8	27.7	27.7
	Min. ^a 24.6	26.0	25.1	26.2	25.6	26.2	25.5	26.2
	Av. ^b 26.4(37)	26.7(12)	26.4(36)	26.7(10)	26.5(38)	26.8(11)	26.4(36)	26.6(11)
Caliper, pt.	Max. ^a 11.2	10.0	11.3	10.0	11.4	10.1	11.5	9.8
	Min. ^a 7.9	7.9	8.0	8.0	7.9	7.9	7.8	7.8
	Av. ^b 9.7(36)	9.3(11)	9.7(35)	9.3(9)	9.6(37)	9.2(10)	9.6(33)	9.0(10)
Concora, lb	Max. ^a 69.5	69.5	70.0	69.5	69.4	69.4	70.0	70.0
	Min. ^a 52.0	52.0	57.0	58.2	54.0	54.0	54.0	54.0
	Av. ^b 61.0(37)	61.0(12)	61.7(36)	61.6(10)	61.8(38)	61.1(11)	61.1(36)	60.8(11)

^aCurrent machine average.

^bCurrent F.K.B.G. average, number of machines is indicated in parentheses.

INTRODUCTION

The continuous base-line study (modified) is a compilation of monthly averages of mill test data obtained routinely on 26-lb corrugating medium manufactured in the member mills of F.K.B.G. Mill data are included for moisture content, basis weight, caliper, and Concora made on the production of individual machines which produced at least 500 tons of this grade weight during a given month.

PRESENTATION OF DATA

For the 26-lb grade weight of corrugating medium referred to earlier, data on conditioning and testing environments, mill test averages for moisture content, adjusted basis weight, caliper, and Concora results are compiled in the following tables.

Table Number	Description
I-II-III	Mill Test Averages on 26-Lb Corrugating Medium
IV	Data on Conditioning and Testing Environments

The procedure used in calculating cumulative machine averages, machine factors, machine indexes, and F.K.B.G. indexes are described in the Appendix.

It should be explained that the number of machines for which data are compiled in each table for a specified month varies for these reasons: a machine must have (a) produced at least 500 tons of 26-lb corrugating medium during the specified month, or (b) produced 500 tons of 26-lb corrugating medium during any one or more of the 12 months prior to the specified month (so that a cumulative average is available), to be included in a given table.

TABLE I
AVERAGES OF ROUTINE MILL QUALITY CONTROL DATA FOR 26 LB. CORRUGATING MEDIUM
APRIL, 1981

CODE *E	MOISTURE CONTENT, PERCENT				ADJ. BASIS WT.,*A LB./ M SQ. FT.				CALIPER, PT.				CONCORA TEST, LB.			
	MACHINE DATA				MACHINE DATA				MACHINE DATA				MACHINE DATA			
	CUR. AV.	CUM. AV.	FACT. *B	IND. *C	CUR. AV.	CUM. AV.	FACT. *B	IND. *C	CUR. AV.	CUM. AV.	FACT. *B	IND. *C	CUR. AV.	CUM. AV.	FACT. *B	IND. *C
B1		6.4				26.4				11.0				61.2		
H1(R)	4.0	4.0	100.0	62.5	27.1	27.0	100.4	102.6	8.0	7.9	101.3	82.5	61.0	61.2	99.7	99.0
L1	7.5	7.5	100.0	117.2	26.3	26.2	100.4	99.6	8.7	8.7	100.0	89.7	70.0	69.6	100.6	113.6
M1	7.0	6.9	101.4	109.4	26.1	26.2	99.6	98.9	8.9	9.3	95.7	91.8	61.0	61.3	99.5	99.0
N1(R)	4.0	4.0	100.0	62.5	27.7	27.5	100.7	104.9	9.0	9.0	100.0	92.8	61.0	59.4	102.7	99.0
O1	7.8	8.2	95.1	121.9	25.9	25.7	100.8	98.1	10.0	10.0	100.0	103.1	63.4	64.1	98.9	102.9
P1	6.9	6.8	101.5	107.8	26.2	26.4	99.2	99.2	8.7	9.4	92.6	89.7	60.9	59.8	101.8	98.9
Q1(R)	6.5	6.5	100.0	101.6	26.6	26.7	99.6	100.8	9.0	9.0	100.0	92.8	63.0	64.1	98.3	102.3
R1	7.0	7.0	100.0	109.4	26.3	26.3	100.0	99.6	8.9	9.4	94.7	91.8	62.0	61.6	100.6	100.6
S1	6.1	6.5	93.8	95.3	25.9	25.8	100.4	98.1	9.9	10.1	98.0	102.1	64.0	64.2	99.7	103.9
T1	6.8	6.7	101.5	106.2	26.3	26.2	100.4	99.6	10.3	10.8	95.4	106.2	60.0	59.5	100.8	97.4
X1(R)	4.3	3.1	138.7	67.2	26.9	27.4	98.2	101.9	10.0	10.2	98.0	103.1	59.3	58.6	101.2	96.3
A2	5.5	5.5	100.0	85.9	27.1	26.8	101.1	102.6	11.0	10.7	102.8	113.4	61.0	62.0	98.4	99.0
F2	7.1	7.0	101.4	110.9	26.1	26.2	99.6	98.9	10.8	10.7	100.9	111.3	58.0	58.0	100.0	94.2
G2	6.2	5.6	110.7	96.9	27.3	27.4	99.6	103.4	9.2	9.8	93.9	94.8	58.8	58.0	101.4	95.4
H2	6.8	6.9	98.6	106.2	26.5	26.3	100.8	100.4	9.7	9.8	99.0	100.0	58.0	57.8	100.3	94.2
I2	7.0	7.0	100.0	109.4	26.1	26.3	99.2	98.9	10.2	10.2	100.0	105.2	62.2	63.0	98.7	101.0
J2	6.6	6.7	98.5	103.1	26.3	26.3	100.0	99.6	11.3	11.3	100.0	116.5	62.1	58.7	105.8	100.8
O2	7.0	6.9	101.4	109.4	26.1	26.0	100.4	98.9	9.5	9.4	101.1	97.9	58.0	58.8	98.6	94.2
P2	5.9	5.8	101.7	92.2	26.4	26.6	99.2	100.0	9.2	9.3	98.9	94.8	64.3	65.3	98.5	104.4
Q2		5.6				26.6				9.8				52.5		
R2		7.9				26.2				9.4				62.0		
S2(R)	6.5	6.6	98.5	101.6	26.6	26.5	100.4	100.8	9.1	9.1	100.0	93.8	60.0	61.9	96.9	97.4
X2(R)	4.1	3.4	120.6	64.1	26.9	27.3	98.5	101.9	10.0	9.9	101.0	103.1	58.2	59.2	98.3	94.5
B3	6.2	5.6	110.7	96.9	26.5	26.7	99.2	100.4	9.6	9.9	97.0	99.0	57.0	57.6	99.0	92.5
I3	5.6	5.7	98.2	87.5	26.4	26.4	100.0	100.0	10.1	10.1	100.0	104.1	62.0	61.2	101.3	100.6
J3	6.9	7.0	98.6	107.8	26.3	26.4	99.6	99.6	10.5	10.4	101.0	108.2	60.5	60.8	99.5	98.2
P3	6.7	6.9	97.1	104.7	26.4	26.3	100.4	100.0	10.2	10.0	102.0	105.2	61.8	62.6	98.7	100.3
R3	6.8	6.8	100.0	106.2	26.2	26.2	100.0	99.2	10.5	10.6	99.0	108.2	58.0	58.2	99.6	94.2
W3(R)	5.7	5.8	98.3	89.1	26.4	26.4	100.0	100.0	10.0	10.0	100.0	103.1	63.7	63.0	101.1	103.4
X3	6.8	6.6	103.0	106.2	26.2	26.2	100.0	99.2	10.7	11.1	96.4	110.3	67.2	66.4	101.2	109.1
Y3	7.5	7.3	102.7	117.2	26.1	26.1	100.0	98.9	8.9	9.0	98.9	91.8	69.0	69.0	100.0	112.0
Z3	6.8	6.9	98.6	106.2	26.2	26.5	98.9	99.2	9.9	9.5	104.2	102.1	57.0	57.8	98.6	92.5
D4(R)	6.7	6.8	98.5	104.7	26.2	26.2	100.0	99.2					61.0	62.5	97.6	99.0
J4		6.6				26.1				9.6				58.8		
K4	7.9	8.0	98.8	123.4	26.2	26.0	100.8	99.2	8.7	8.4	103.6	89.7	63.0	62.6	100.6	102.3
L4	9.4	9.4	100.0	146.9	25.1	25.4	98.8	95.1	9.8	9.5	103.2	101.0	64.1	65.0	98.6	104.0
N4	6.4	7.0	91.4	100.0	26.4	26.3	100.4	100.0	9.5	9.2	103.3	97.9	62.2	62.0	100.3	101.0
O4(R)	6.0	6.0	100.0	93.8	26.6	26.2	101.5	100.8	9.0	9.0	100.0	92.8	59.2	59.0	100.3	96.1
U4(R)	6.9	7.0	98.6	107.8	26.2	26.3	99.6	99.2	9.8	9.8	100.0	101.0	69.5	70.0	99.3	112.8
FKBG DATA																
	TOTAL	RECYCLED		TOTAL	RECYCLED		TOTAL	RECYCLED		TOTAL	RECYCLED		TOTAL	RECYCLED		
CUR. AV	6.5	5.5		26.4	26.7		9.7	9.3		61.7	61.6					
CUM. AV	6.4	5.6		26.4	26.7		9.7	9.2		61.6	61.8					
IND. *D	101.6	98.2		100.0	100.0		100.0	101.1		100.2	99.7					

(*)-- NOTES A, B, C, D, AND E, ARE GIVEN IN APPENDIX.

TABLE II
AVERAGES OF ROUTINE MILL QUALITY CONTROL DATA FOR 26 LB. CORRUGATING MEDIUM
MAY, 1981

CODE *E	MOISTURE CONTENT, PERCENT				ADJ. BASIS WT.,*A LB./ M. SQ. FT.				CALIPER, PT.				CONCORA TEST, LB.			
	MACHINE DATA				MACHINE DATA				MACHINE DATA				MACHINE DATA			
	CUR. AV.	CUM. AV.	FACT. *B	IND. *C	CUR. AV.	CUM. AV.	FACT. *B	IND. *C	CUR. AV.	CUM. AV.	FACT. *B	IND. *C	CUR. AV.	CUM. AV.	FACT. *B	IND. *C
B1	6.5	6.4	101.6	101.6	26.6	26.4	100.8	100.8	10.9	11.1	98.2	112.4	64.5	61.3	105.2	104.7
H1(R)	3.9	4.0	97.5	60.9	27.0	27.0	100.0	102.3	7.9	7.9	100.0	81.4	60.5	61.2	98.8	98.2
L1	7.5	7.5	100.0	117.2	26.4	26.2	100.8	100.0	8.8	8.7	101.1	90.7	68.0	69.9	97.3	110.4
M1	6.9	6.9	100.0	107.8	26.2	26.2	100.0	99.2	9.2	9.2	100.0	94.8	62.0	61.3	101.1	100.6
N1(R)	4.0	4.0	100.0	62.5	27.7	27.5	100.7	104.9	9.0	9.0	100.0	92.8	61.2	59.6	102.7	99.4
O1	8.1	8.2	98.8	126.6	26.0	25.7	101.2	98.5	9.7	10.0	97.0	100.0	65.8	64.0	102.8	106.8
P1	6.9	6.8	101.5	107.8	26.2	26.3	99.6	99.2	9.0	9.3	96.8	92.8	60.0	59.9	100.2	97.4
Q1(R)	6.5	6.5	100.0	101.6	26.7	26.7	100.0	101.1	9.0	9.0	100.0	92.8	64.0	63.9	100.2	103.9
R1	6.9	7.0	98.6	107.8	26.3	26.3	100.0	99.6	9.1	9.3	97.8	93.8	60.7	61.7	98.4	98.5
S1	6.2	6.4	96.9	96.9	25.7	25.8	99.6	97.3	9.9	10.1	98.0	102.1	63.0	64.3	98.0	102.3
T1	6.7	6.7	100.0	104.7	26.2	26.2	100.0	99.2	10.1	10.8	93.5	104.1	64.0	59.6	107.4	103.9
X1(R)	5.9	3.3	178.8	92.2	26.9	27.4	98.2	101.9	9.5	10.1	94.0	97.9	59.0	58.6	100.7	95.8
A2	5.4	5.5	98.2	84.4	26.9	26.8	100.4	101.9	11.0	10.7	102.8	113.4	62.0	61.9	100.2	100.6
F2	7.0	7.0	100.0	109.4	26.0	26.2	99.2	98.5	10.5	10.7	98.1	108.2	57.0	58.0	98.3	92.5
G2	6.2	5.6	110.7	96.9	27.4	27.4	100.0	103.8	9.5	9.7	97.9	97.9	58.2	58.2	100.0	94.5
H2	6.7	6.9	97.1	104.7	26.4	26.3	100.4	100.0	9.9	9.8	101.0	102.1	58.0	57.8	100.3	94.2
I2	7.0	7.0	100.0	109.4	26.4	26.3	100.4	100.0	10.3	10.2	101.0	106.2	62.0	62.9	98.6	100.6
J2	6.5	6.7	97.0	101.6	26.2	26.3	99.6	99.2	11.4	11.3	100.9	117.5	59.7	59.1	101.0	96.9
O2	7.1	7.0	101.4	110.9	26.0	26.0	100.0	98.5	9.6	9.4	102.1	99.0	58.0	58.8	98.6	94.2
P2	5.7	5.8	98.3	89.1	26.4	26.6	99.2	100.0	8.9	9.3	95.7	91.8	65.2	65.3	99.8	105.8
Q2(R)	5.8	5.6	103.6	90.6	27.8	26.6	104.5	105.3	10.1	9.8	103.1	104.1	54.0	52.5	102.8	87.7
R2	7.1	7.9	89.9	110.9	26.2	26.2	100.0	99.2	8.7	9.4	92.6	89.7	65.0	62.0	104.8	105.5
S2(R)	6.6	6.6	100.0	103.1	26.8	26.5	101.1	101.5	9.1	9.1	100.0	93.8	61.0	61.7	98.9	99.0
X2(R)	4.3	3.5	122.8	67.2	27.0	27.3	98.9	102.3	9.2	9.9	92.9	94.8	59.4	59.1	100.5	96.4
B3	6.1	5.8	105.2	95.3	26.8	26.6	100.8	101.5	9.9	9.8	101.0	102.1	57.7	57.4	100.5	93.7
I3	5.6	5.6	100.0	87.5	26.4	26.4	100.0	100.0	10.2	10.1	101.0	105.2	62.0	61.2	101.3	100.6
J3	7.2	7.0	102.8	112.5	26.3	26.4	99.6	99.6	10.4	10.4	100.0	107.2	62.1	60.8	102.1	100.8
P3	6.4	6.9	92.8	100.0	26.4	26.3	100.4	100.0	9.8	10.1	97.0	101.0	64.2	62.6	102.6	104.2
R3	6.7	6.8	98.5	104.7	26.3	26.2	100.4	99.6	10.4	10.6	98.1	107.2	60.0	58.3	102.9	97.4
W3(R)	5.7	5.8	98.3	89.1	26.4	26.4	100.0	100.0	9.5	10.0	95.0	97.9	63.3	63.0	100.5	102.8
X3	6.7	6.7	100.0	104.7	26.2	26.2	100.0	99.2	10.5	11.0	95.4	108.2	67.7	66.4	102.0	109.9
Y3		7.3				26.1				9.0				69.0		
Z3	7.1	6.9	102.9	110.9	26.1	26.4	98.9	98.9	9.1	9.5	95.8	93.8	59.0	57.8	102.1	95.8
D4(R)	6.8	6.8	100.0	106.2	26.2	26.2	100.0	99.2					61.0	62.3	97.9	99.0
K4	7.9	8.0	98.8	123.4	26.1	26.1	100.0	98.9	8.7	8.4	103.6	89.7	63.0	62.6	100.6	102.3
L4	9.3	9.4	98.9	145.3	25.6	25.4	100.8	97.0	9.8	9.5	103.2	101.0	64.8	65.0	99.7	105.2
N4	6.4	6.9	92.8	100.0	26.4	26.3	100.4	100.0	9.4	9.3	101.1	96.9	61.6	62.1	99.2	100.0
O4(R)	6.0	6.0	100.0	93.8	26.6	26.3	101.1	100.8	9.0	9.0	100.0	92.8	59.2	59.0	100.3	96.1
U4(R)	7.0	6.9	101.4	109.4	26.3	26.3	100.0	99.6	9.9	9.8	101.0	102.1	69.4	69.9	99.3	112.7

FKBG DATA

	TOTAL	RECYCLED	TOTAL	RECYCLED	TOTAL	RECYCLED	TOTAL	RECYCLED
CUR. AV	6.5	5.7	26.5	26.8	9.6	9.2	61.8	61.1
CUM. AV	6.4	5.6	26.4	26.7	9.7	9.2	61.6	61.7
IND. *D	101.6	101.8	100.4	100.4	99.0	100.0	100.3	99.0

(*)-- NOTES A, B, C, D, AND E, ARE GIVEN IN APPENDIX.

TABLE III
AVERAGES OF ROUTINE MILL QUALITY CONTROL DATA FOR 26 LB. CORRUGATING MEDIUM
JUNE, 1981

CODE *E	MOISTURE CONTENT, PERCENT				ADJ. BASIS WT.,*A LB./ M SQ. FT.				CALIPER, PT.				CONCORA TEST, LB.			
	MACHINE DATA				MACHINE DATA				MACHINE DATA				MACHINE DATA			
	CUR. AV.	CUM. AV.	FACT. *B	IND. *C	CUR. AV.	CUM. AV.	FACT. *B	IND. *C	CUR. AV.	CUM. AV.	FACT. *B	IND. *C	CUR. AV.	CUM. AV.	FACT. *B	IND. *C
B1		6.5				26.4				11.1				61.6		
H1(R)	3.9	4.0	97.5	60.9	27.0	27.0	100.0	102.3	7.8	7.9	98.7	80.4	60.0	61.0	98.4	97.4
L1	7.5	7.5	100.0	117.2	26.4	26.3	100.4	100.0	8.7	8.7	100.0	89.7	70.0	69.5	100.7	113.6
M1	7.0	6.9	101.4	109.4	26.2	26.2	100.0	99.2	9.4	9.2	102.2	96.9	61.0	61.3	99.5	99.0
N1(R)	4.0	4.0	100.0	62.5	27.7	27.6	100.4	104.9	9.0	9.0	100.0	92.8	61.5	59.9	102.7	99.8
O1	7.7	8.2	93.9	120.3	26.1	25.7	101.6	98.9	9.8	10.0	98.0	101.0	64.0	64.2	99.7	103.9
P1	7.0	6.8	102.9	109.4	26.1	26.3	99.2	98.9	9.1	9.2	98.9	93.8	60.9	59.9	101.7	98.9
Q1(R)	6.5	6.5	100.0	101.6	26.7	26.7	100.0	101.1	9.0	9.0	100.0	92.8	63.0	63.9	98.6	102.3
R1	7.0	7.0	100.0	109.4	26.3	26.3	100.0	99.6	9.0	9.3	96.8	92.8	61.7	61.6	100.2	100.2
S1	6.2	6.4	96.9	96.9	25.8	25.8	100.0	97.7	10.0	10.1	99.0	103.1	63.0	64.3	98.0	102.3
T1	7.1	6.7	106.0	110.9	26.4	26.2	100.8	100.0	10.2	10.7	95.3	105.2	62.0	59.8	103.7	100.6
X1(R)	7.2	3.5	205.7	112.5	26.3	27.3	96.3	99.6	9.1	10.0	91.0	93.8	57.9	58.5	99.0	94.0
A2	5.4	5.5	98.2	84.4	27.0	26.8	100.7	102.3	11.0	10.8	101.8	113.4	61.0	62.0	98.4	99.0
F2	7.1	7.0	101.4	110.9	26.1	26.2	99.6	98.9	10.6	10.7	99.1	109.3	57.0	57.9	98.4	92.5
G2	6.3	5.6	112.5	98.4	27.1	27.4	98.9	102.6	9.4	9.6	97.9	96.9	57.0	58.2	97.9	92.5
H2	6.7	6.8	98.5	104.7	26.3	26.3	100.0	99.6	9.8	9.8	100.0	101.0	58.0	57.9	100.2	94.2
I2	7.1	7.0	101.4	110.9	26.3	26.3	100.0	99.6	10.2	10.2	100.0	105.2	61.2	62.8	97.4	99.4
J2	6.6	6.7	98.5	103.1	25.3	26.3	100.0	99.6	11.5	11.3	101.8	118.6	58.5	59.1	99.0	95.0
O2	7.1	7.0	101.4	110.9	26.0	26.0	100.0	98.5	9.3	9.4	98.9	95.9	58.0	58.8	98.6	94.2
P2	5.7	5.8	98.3	89.1	26.5	26.6	99.6	100.4	9.4	9.2	102.2	96.9	64.0	65.4	97.8	103.9
Q2(R)	4.9	5.7	86.0	76.6	26.8	27.0	99.2	101.5	9.5	9.9	96.0	97.9	54.0	53.0	101.9	87.7
R2		7.5				26.2				9.0				63.5		
S2(R)	6.3	6.6	95.4	98.4	26.5	26.5	100.0	100.4	9.1	9.1	100.0	93.8	60.0	61.6	97.4	97.4
X2(R)	5.4	3.5	154.3	84.4	26.8	27.2	98.5	101.5	9.0	9.8	91.8	92.8	58.2	59.1	98.5	94.5
B3	6.1	5.8	105.2	95.3	26.9	26.7	100.7	101.9	10.1	9.8	103.1	104.1	56.8	57.5	98.8	92.2
I3	5.7	5.6	101.8	89.1	26.3	26.4	99.6	99.6	10.1	10.1	100.0	104.1	61.0	61.3	99.5	95.0
J3	7.4	7.0	105.7	115.6	26.3	26.4	99.6	99.6	10.5	10.4	101.0	108.2	61.6	60.9	101.1	100.0
P3	6.5	6.8	95.6	101.6	26.3	26.3	100.0	99.6		10.1			63.5	62.6	101.4	103.1
R3	6.8	6.8	100.0	106.2	26.2	26.2	100.0	99.2	10.3	10.6	97.2	106.2	59.0	58.6	100.7	95.8
W3(R)	5.9	5.8	101.7	92.2	26.3	26.4	99.6	99.6	9.0	10.0	90.0	92.8	63.0	63.0	100.0	102.3
X3	6.9	6.7	103.0	107.8	26.2	26.2	100.0	99.2	10.5	11.0	95.4	108.2	66.5	66.6	99.8	108.0
Y3		7.3				26.1				9.0				69.0		
Z3	7.3	6.9	105.8	114.1	25.9	26.4	98.1	98.1	9.1	9.5	95.8	93.8	58.0	57.6	100.7	94.2
D4(R)	6.8	6.8	100.0	106.2	26.2	26.2	100.0	99.2					62.0	62.2	99.7	100.6
K4	7.9	8.0	98.8	123.4	26.1	26.1	100.0	98.9	8.7	8.4	103.6	89.7	62.0	62.6	99.0	100.6
L4	9.5	9.4	101.1	148.4	25.5	25.4	100.4	96.6	9.8	9.5	103.2	101.0	63.5	64.9	97.8	103.1
N4	6.5	6.8	95.6	101.6	26.3	26.3	100.0	99.6		9.3			61.5	62.0	99.2	99.8
O4(R)	6.0	6.0	100.0	93.8	26.5	26.3	100.8	100.4	9.0	9.0	100.0	92.8	59.3	59.1	100.3	96.3
U4(R)	7.0	6.9	101.4	109.4	26.4	26.3	100.4	100.0	9.8	9.8	100.0	101.0	70.0	69.9	100.1	113.6


	FKBG DATA		TOTAL	RECYCLED	TOTAL	RECYCLED	TOTAL	RECYCLED	TOTAL	RECYCLED
	TOTAL	RECYCLED								
CUR. AV	6.6	5.8	26.4	26.6	9.6	9.0	61.1	60.8		
CUM. AV	6.4	5.6	26.4	26.7	9.7	9.2	61.6	61.6		
IND. *D	103.1	103.6	100.0	99.6	99.0	97.8	99.2	98.7		

(*)-- NOTES A, B, C, D, AND E, ARE GIVEN IN APPENDIX.

TABLE IV
DATA ON CONDITIONING AND TESTING ENVIRONMENTS
APRIL, MAY, JUNE, 1981

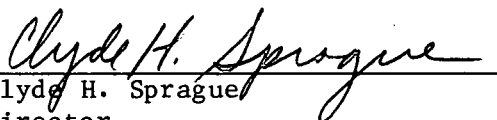
Code	Conditioning Environment			Testing Environment	
	Are Quality Samples Conditioned Before Testing?	Time	Temp., °F	RH, %	
B1	No	--	--	--	No
H1	No	--	--	--	Yes: 73 + 2°F; 50 + 5% RH
L1	No	--	--	--	Yes: 73 + 2°F; 50 + 2% RH
M1	No	--	--	--	No
N1	Yes	15 Min	72	50	Yes: 72°F; 50% RH
O1	No	--	--	--	Yes: 72 + 2°F; 50 + 2% RH
P1	Yes	20 Min	--	--	Yes: 72 + 2°F; 50 + 2% RH
Q1	No	--	--	--	No
R1	No	--	--	--	No
S1	No	--	--	--	No
T1	No	--	--	--	Yes: 73 + 2°F; 50 + 2% RH
X1	No	--	--	--	No
A2	No	--	--	--	Yes: 73 + 1°F; 50 + 2% RH
F2	No	--	--	--	Yes: 72 + 2°F; 50 + 2% RH
G2	Yes	20 Min	--	--	Yes: 73 + 2°F; 50 + 2% RH
H2	No	--	--	--	No
I2	No	--	--	--	Yes: 70 + 2°F; 50 + 2% RH
J2	No	--	--	--	No
O2	No	--	--	--	Yes: 72 + 2°F; 50 + 2% RH
P2	No	--	--	--	No
Q2	Yes	20 Min	--	--	Yes: 72 + 3.5°F; 50 + 2% RH
R2	No	--	--	--	Yes: 73 + 2°F; 50 + 2% RH
S2	No	--	--	--	No
X2	No	--	--	--	No
B3	Yes	20 Min	--	--	Yes: 73 + 2°F; 50 + 2% RH
I3	No	--	--	--	Yes: 73 + 1°F; 50 + 2% RH
J3	No	--	--	--	Yes: 70 + 2°F; 50 + 2% RH
P3	No	--	--	--	No
R3	No	--	--	--	Yes: 73 + 2°F; 50 + 2% RH
W3	No	--	--	--	Yes: 72 + 2°F; 50 + 3% RH
X3	No	--	--	--	Yes: 72 + 2°F; 50 + 2% RH
Y3	No	--	--	--	Yes: 73 + 2°F; 50 + 2% RH
Z3	No	--	--	--	Yes: 73 + 2°F; 50 + 2% RH
D4	No	--	--	--	Yes: 72 + 2°F; 50 + 5% RH
K4	No	--	--	--	Yes: 70 + 2°F; 50 + 10% RH
L4	No	--	--	--	No
N4	No	--	--	--	No
O4	Yes	15 Min	72	50	Yes: 72°F; 50% RH
U4	No	--	--	--	Yes: 72 + 1°F; 50 + 1% RH

THE INSTITUTE OF PAPER CHEMISTRY



Roger H. Van Eperen
Research Fellow
Paper Materials & Systems Division

Approved by



Clyde H. Sprague
Director
Paper Materials & Systems Division

APPENDIX

NOTES A, B, C, D, AND E, USED IN TABULATIONS OF MILL DATA

Notes A, B, C, D, and E, used in the tables of mill data are given below; these notes define the procedure used in calculating adjusted basis weight, machine factor, machine index, and F.K.B.G. index. It should be stressed that each formula is applicable only to a specific physical property of corrugating medium.

Note A: Adjusted basis weight (ABW) = reported weight (RBW) adjusted to moisture content of 7.8%:

$$ABW = RBW \left[\frac{(100 - \text{reported moisture content, \%})}{(100 - 7.8)} \right]$$

Note B: Machine factor (%) = $\left[\frac{\text{Current machine average}}{\text{Cumulative machine average}} \right] \cdot 100$ where

$$\text{Cumulative machine average} = \sum \frac{\text{CMA's}^a \text{ for previous 12 months excluding CMA for current month}}{12}$$

Note C: Machine index (%) = $\left[\frac{\text{Current machine average}}{\text{Cumulative F.K.B.G. total average}} \right] \cdot 100$ where

$$\text{Cumulative F.K.B.G. average} = \sum \frac{\text{CFKBGA's}^b \text{ for previous 12 months excluding CFKBGA for current month}}{12}$$

Note D: F.K.B.G. index (%) = $\left[\frac{\text{Current F.K.B.G. average}}{\text{Cumulative F.K.B.G. average}} \right] \cdot 100$ where

$$\text{Current F.K.B.G. average} = \sum \frac{\text{CMA's}^a \text{ for current month for all machines}}{\text{Number of machines}}$$

Note E: (R) - Indicates a medium manufactured from recycled fibers.

^aCMA = current machine average for a specific physical property of 26-lb corrugating medium obtained during a given month on a specific machine.

^bCFKBGA = current F.K.B.G. average for a specific physical property of 26-lb corrugating medium obtained during a given month.

IPST HASELTON LIBRARY



5 0602 01065028 3