

*nineteen fifty*

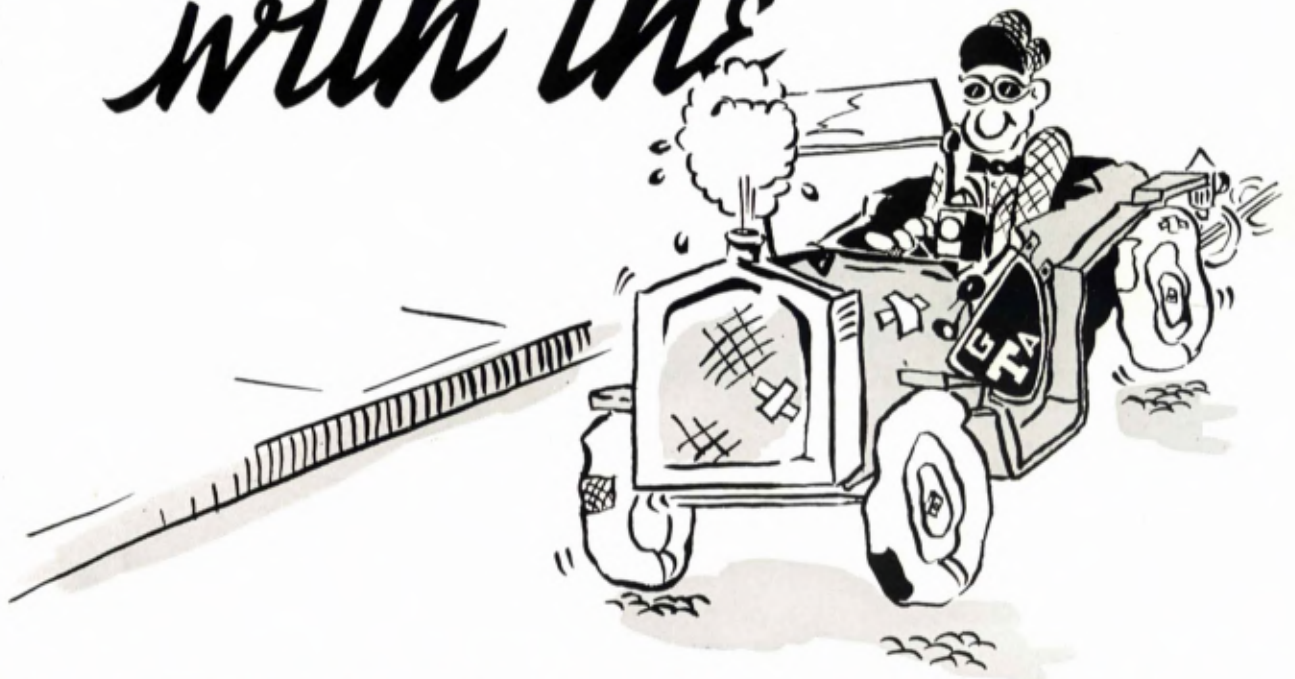
# BLUE PRINT

GEORGIA INSTITUTE OF TECHNOLOGY

ogram

DR. PAUL WEBER

Roll'n  
with the



**RAMBLIN' RECK**

*from . . .*



...September to

June... Views of...



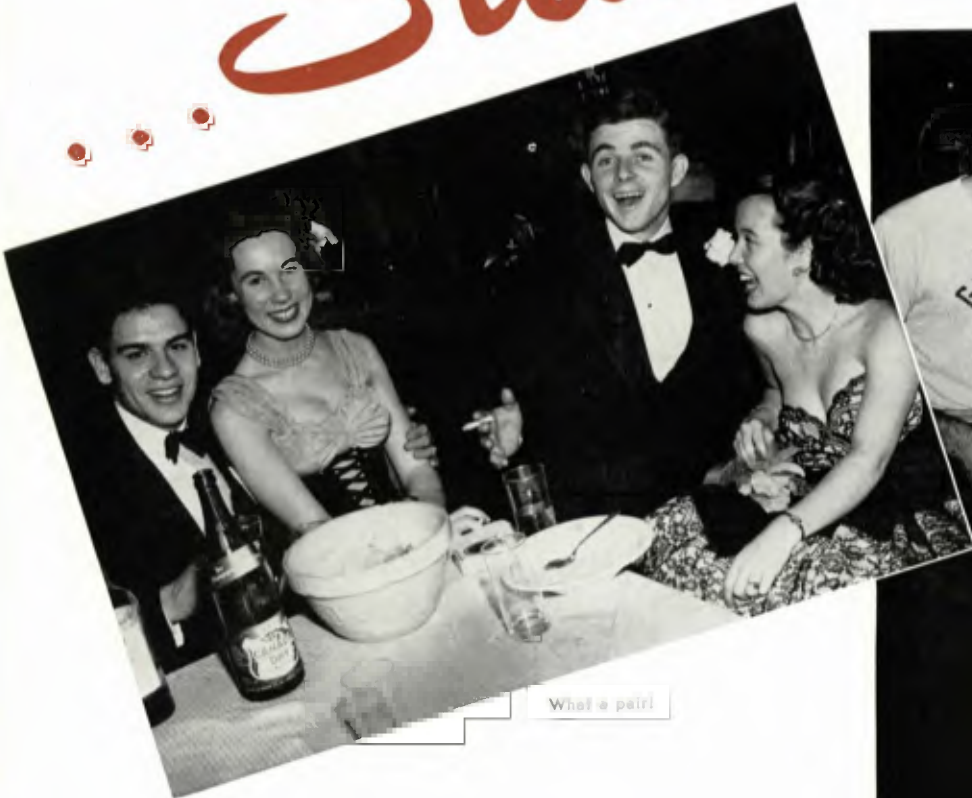


Eddy the LUCKY 6 ft. 4 students are assigned the bottom boxes.



See them right here.

# Student life.....



What a pair!



Get that BALD' look.



Pappy Nostril and His Nosepickers doing their stuff.

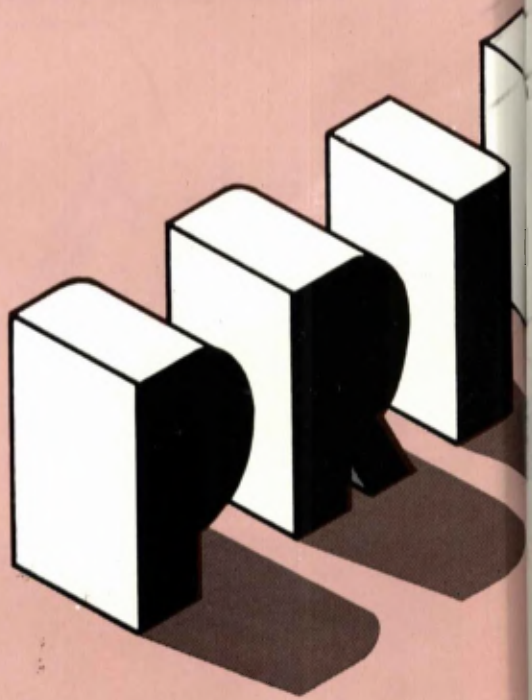
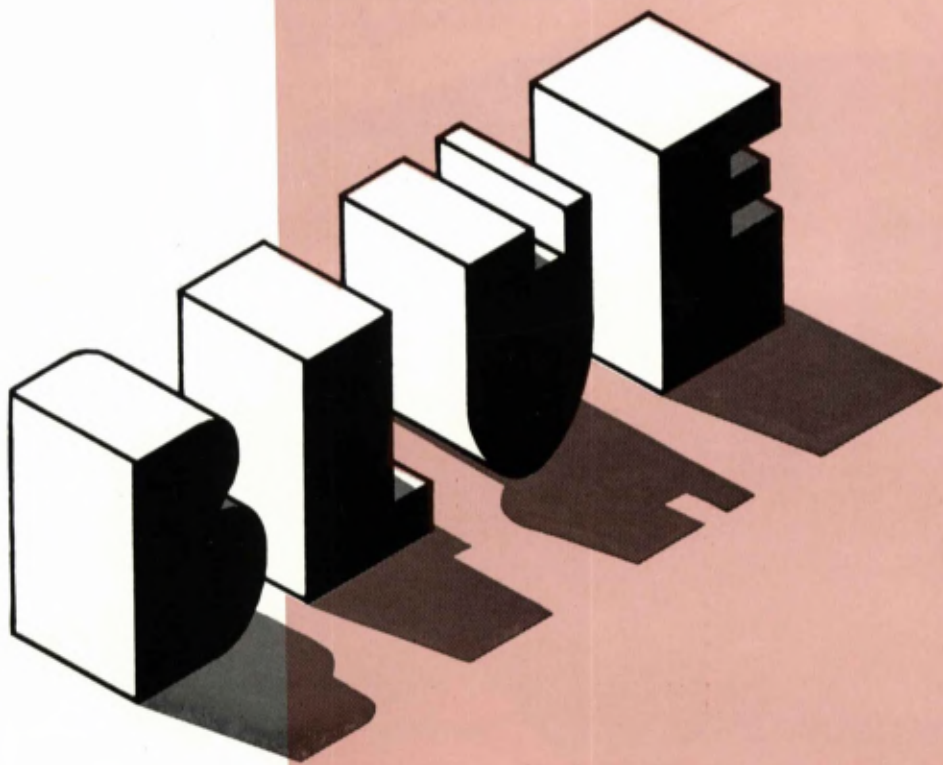


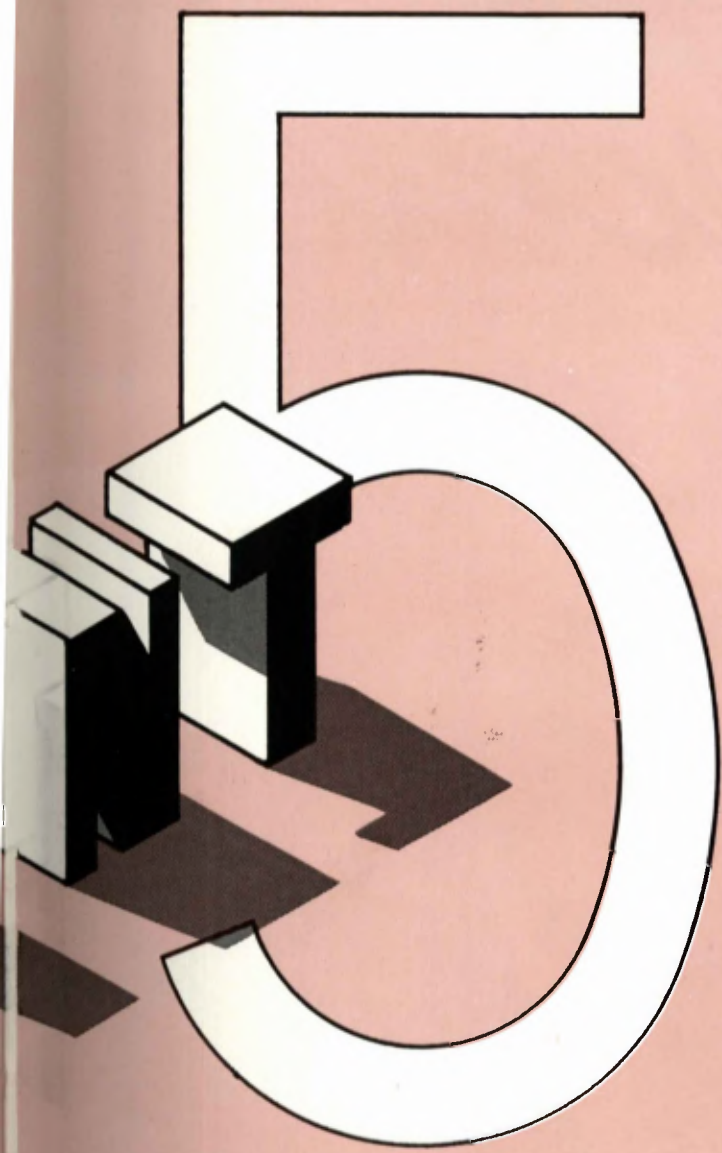
Aw, there's nothing to it—it's all done with wires.

*As shown in the...*



DOOLEY SHALL NOT REIGN TONIGHT!





*The Official Yearbook of the*  
**GEORGIA INSTITUTE OF TECHNOLOGY**  
**ATLANTA, GEORGIA**

*Published by the Students*

HENRY FRANKLIN MCCAMISH, JR. . . . . *Editor*  
AUSTIN WALKER WEST, JR. . . . . *Managing Editor*  
CHARLES DANIEL BOBO . . . . . *Business Manager*

# *We Dedicate*

with

DEEP GRATITUDE AND SINCERE RESPECT

this

the forty-third volume of the

BLUE PRINT

to

FRED WESLEY AJAX, B. A., M. A.

ASSOCIATE DEAN OF STUDENTS

who

As Coordinator of Veterans Affairs and Placement Officer has devoted his energies and efforts in an untiring manner to the students and to the advancement of the Georgia Institute of Technology.

WE GIVE CREDIT WHERE CREDIT IS DUE.



Fred Wesley Ajot



*Administration*  
PAGE 14



*Classes*

PAGE 32

# CONTENTS



# Military

PAGE 192



# Features

PAGE 216



# Fraternities

PAGE 242

# Activities

PAGE 316

# Athletics

PAGE 410



# ADMINISTRATION

color photo by cooper & cleare



TECH.



### DR. MARION LUTHER BRITTAIN

The part that Dr. Marion Luther Brittain has played in the expansion of the Georgia Institute of Technology cannot be overemphasized. For more than two decades he guided the efforts of Georgia Tech on its climb to prominence. Dr. Brittain will long be remembered for the part he has played in the growth of Georgia's educational system.



## VICE PRESIDENT

Georgia Tech is indeed fortunate in having a man of the caliber of Cherry Logan Emerson as its Vice President. A concrete witness to his outstanding ability and personality is the rapid expansion which has taken place on the Tech campus during the past year. No member of the administration has a more difficult job, and no one could carry out the responsibilities of this office more ably than Cherry Emerson.



CHERRY LOGAN EMERSON  
*Vice President*



## EXECUTIVE DEAN

Phil Blasier Narmore, as Executive Dean, is responsible for enforcing the regulations of the school. He has performed this difficult task with the quietness and firmness characteristic of a true leader. His energetic and tireless work has figured prominently in the improvement and expansion of Georgia Tech.



PHIL BLASIER NARMORE  
*Executive Dean*

## DEAN OF STUDENTS



One of the most indispensable members of the administration from the standpoint of students and faculty is George C. Griffin, Dean of Students. Thousands of students pass through his office for advice and assistance and his friendly, helpful attitude has won him the admiration of all those who have come in contact with him.



GEORGE C. GRIFFIN  
*Dean of Students*



RALPH A. HEFNER  
*Dean of General Studies*

## DEAN OF GENERAL STUDIES



As Dean of General Studies, Dean Hefner has carried out his administrative duties with an air of warm sincerity and exceptional capability. His fairness and friendliness have won for him the high regard of the student body.



LLOYD W. CHAPIN  
*Dean of the Faculty*

## DEAN OF THE FACULTY



In his position of Dean of the Faculty, Dean Chapin has shown remarkable ability in handling the academic affairs of the Institute. Students and faculty alike have come to admire the spirit of friendliness and rare executive ability which he possesses.



JESSE W. MASON  
*Dean of Engineering*

## DEAN OF ENGINEERING



The administration of the engineering division comes naturally to Dean Mason who formerly coordinated the affairs of the School of Chemical Engineering. In his two years as Dean of Engineering he has proved his real ability as an administrator.

### OFFICE OF THE PRESIDENT

- BLAKE RAGSDALE VAN LEER, Sc.D., Eng.D. . . . . *President*
- MARION LUTHER BRITAIN, A.B., LL.B. . . . . *President Emeritus*
- ELIZABETH KOENIG . . . . . *Executive Secretary to the President*
- JEAN D. HINSON . . . . . *Receptionist*

### OFFICE OF THE VICE PRESIDENT

- CHERRY LOGAN EMERSON, B.S. in M.E. and E.E. . . . . *Vice President*
- MRS. FRANCES S. KRELLENSTEIN . . . . . *Administrative Assistant*

### OFFICE OF THE EXECUTIVE DEAN

- PHIL BLASIER NARMORE, B.S., Ph.D. . . . . *Executive Dean*
- NAN RUSSELL LINGLE . . . . . *Administrative Assistant*
- EVELYN TUCKER . . . . . *Secretary*



The Georgia Tech Library.



WILLIAM L. CARMICHAEL  
Registrar

OFFICE OF THE DEAN OF GENERAL STUDIES

RALPH A. HEFNER, Ph.D. . . . . *Dean*  
MRS. MARTHA Y. BOYTE . . . . . *Secretary*

OFFICE OF THE DEAN OF FACULTIES

LLOYD WALTER CHAPIN, M.A. . . . . *Dean*  
MARY ELEAZAR BROWN . . . . . *Secretary*

OFFICE OF THE DEAN OF ENGINEERING

JESSE W. MASON, Ph.D. . . . . *Dean*  
DOMENICO PIETRO SAVANT, B.S., M.S. . . . . *Vice Dean*  
MRS. FRANCES NORTON . . . . . *Secretary*

OFFICE OF THE DEAN OF STUDENTS

GEORGE C. GRIFFIN, B.S. . . . . *Dean*  
FRED W. AJAX, B.A., M.A. . . . . *Associate Dean*  
JOHN J. PERSHING, A.B., M. Ed. . . . . *Associate Dean*  
D. O. DOUGHERTY, C.B.S., LL.B. . . . . *Counselor*  
MRS. ESTHER LEVELLE . . . . . *Secretary*  
PAT MURPHEY . . . . . *Secretary*  
FRANCES WEEMS . . . . . *Secretary*

OFFICE OF THE REGISTRAR

WILLIAM LAWSON CARMICHAEL, B.S., M.S. . . . . *Registrar*  
HORACE W. STURGIS, B.S., M.S. . . . . *Associate Registrar*  
NORMA M. JOHNSON, A.B. . . . . *Assistant Admissions Officer*



HORACE W. STURGIS  
Associate Registrar



RAY L. SWEIGERT  
Dean of Graduate School



JAMES G. WOHLFORD  
Acting Director Cooperative Department



JAMIE R. ANTHONY  
Controller



MRS. J. H. CROSLAND  
Librarian

THE LIBRARY

- MRS. JAMES H. CROSLAND . . . . . Librarian  
 MRS. JULIA M. MCMICHAEL, A.B. . . . . Assistant Librarian  
 MRS. MARTHA JANE JACKSON, A.B. in L.S.  
 . . . . . Periodicals Librarian  
 VIRGINIA BYRD PARKS, A.B., A.B. in L.S. . . . . Serials Cataloger  
 EVA TRASCHEL, A.B., A.B. in L.S. . . . . Cataloger



ROGER S. HOWELL  
Director of Extension Division

OFFICE OF THE GRADUATE SCHOOL

- RAY L. SWEIGERT, Ph.D. . . . . Dean  
 GLENN WILLIAM GILMAN, M.S. . . . . Administrative Assistant  
 LUCILE N. MANGET . . . . . Secretary  
 MARY E. PEEKS . . . . . Secretary

OFFICE OF THE CONTROLLER

- JAMIE R. ANTHONY . . . . . Controller  
 EWELL I. BARNES . . . . . Auditor  
 FRANK B. WILSON, B.S. . . . . Purchasing Agent  
 MILTON T. WHITFIELD . . . . . Assistant Auditor  
 NELLIE I. BELL . . . . . Secretary to Controller

THE EXTENSION DIVISION

- ROGER SHEPPARD HOWELL, B.S., M.S. . . . . Director  
 MRS. BLANCHE B. TURNER . . . . . Registrar  
 MRS. EVA H. BURKE . . . . . Assistant to the Registrar  
 BESSIE C. SHARPE . . . . . Financial Secretary  
 MARTHA G. BELL . . . . . Secretary to Director

THE COOPERATIVE DIVISION

- JAMES ERSKINE MCDANIEL, A.B., M.A., LL.B.  
 (on leave) Professor and Director  
 JAMES GORDON WOHLFORD, B.S., M.S. . . . . Acting Director  
 MARY WARING GREEN, A.B. . . . . Administrative Assistant  
 MARY RUTH SKINNER . . . . . Secretary

OFFICE OF THE ALUMNI

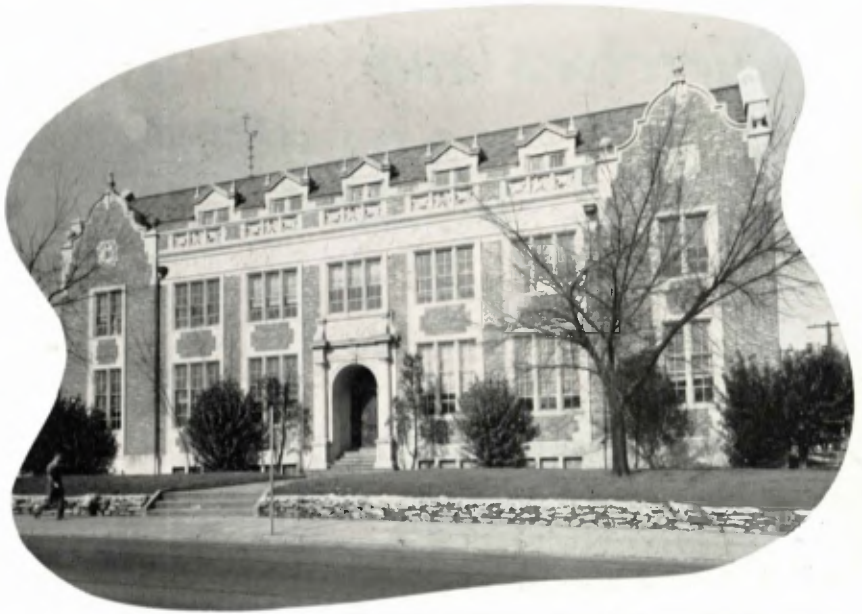
- R. J. THIESEN, B. S.  
 Executive Secretary of Alumni Association  
 W. HOWARD ECTOR, B.S.  
 Executive Secretary of Alumni Foundation  
 W. ROANE BEARD, B.S. . . . . Manager Alumni Activities  
 MRS. HAZEL M. CHAMBLESS . . . . . Secretary  
 MRS. RUBY L. GEPPERTH . . . . . Records and Clerical  
 MRS. THERESA H. WARD . . . . . Records and Clerical



The Georgia Tech Physic Building.



JOHN J. PERSHING  
Associate Dean



The Daniel Guggenheim School of Aeronautical Engineering.

**THE ENGINEERING EXPERIMENT STATION**

- GERALD E. ROSSELOT *Director*
- FRED W. COX, JR. *Assistant Director*
- H. L. BAKER, JR. *Assistant Director*
- HERSCHEL CUDD *Head, Chemical Sciences Division*
- B. H. WEIL *Chief, Technical Information Division*
- R. A. HALL *Supervisor, Engineering Design Section*
- JAMES E. GARRETT *Supervisor, Photographic and Reproduction Laboratory*
- R. H. TATUM *Office Manager and Accountant*
- JOHN F. PARKER *Purchasing Agent*

**THE HEALTH DEPARTMENT AND INFIRMARY**

- LESLIE MORRIS, B.S., M.D. *School Physician*
- LAMONT HENRY, B.S., M.D. *Visiting Consultant*
- MAX BLUMBERG, B.S., M.D. *Associate School Physician*

**OFFICE OF PUBLIC RELATIONS**

- LESLIE F. ZSUFFA, B.S., M.B.A. *Director*
- ALICE CHASTAIN *Secretary*

**THE VETERANS' ADMINISTRATION GUIDANCE CENTER**

- JOSEPH E. MOORE, Ph.D. *Director*
- BURGESS K. BAKER *Assistant Director*

**YOUNG MEN'S CHRISTIAN ASSOCIATION**

- ROBERT S. COMMANDER, B.S., B.D. *General Secretary*
- THEODORE J. LEDEEN *Associate Secretary*

**BUILDINGS AND GROUNDS**

- JAMES ROBERT JENKINS, LL.B., LL.M. *Superintendent*
- MRS. STELLA H. BRENDLE *Supervisor of Purchases*



FRED W. AJAX  
Associate Dean



LESLIE F. ZSUFFA  
Director of Public Relations



JAMES R. JENKINS  
Superintendent of Buildings and Grounds

# Directors and THE SCHOOLS



D. W. DUTTON

## School of AERONAUTICAL ENGINEERING

DONNELL WAYNE DUTTON, B.S., M.S.	Professor
Director of School	
ETHELBERT IRVIN BRICKER, B.S., M.S.	Associate Professor
WALTER CASTLES, JR., B.S.	Associate Professor
HURLBUT WILLIAM SMITH LAVIER, B.S., M.S.	Associate Professor
ALAN POPE, B.S., M.S.	Associate Professor
GEORGE KISSAM WILLIAMS, B.E.E., M.E.E.	Associate Professor
ARNOLD L. DUCOFFE, B.A.E., M.S.	Assistant Professor
JOHN JOSEPH HARPER, B.S., M.S.	Assistant Professor
GUS RICHMOND, JR., B.S., M.S.	Assistant Professor

## School of ARCHITECTURE



H. BUSH-BROWN

HAROLD BUSH-BROWN, A.B., M. Arch.	Professor
Director of School	
BORIS W. BOGUSLAVSKY, B.S., M.S., D.S.	Professor
JAMES HERBERT GAILEY, B.S., M.S.	Professor
PAUL MALCOLM HEFFERNAN, B.S., M.S.	Professor
JAMES J. POLLARD, B.S., B. Arch., M.S.	Professor
JAMES H. GRADY, B. Arch.	Associate Professor
RICHARD PRETZ, B. Arch.	Associate Professor
ISAAC ELIAS SAPORTA, Diplom-Ingenieur	Associate Professor
RICHARD WILSON, A.A. Dipl.	Associate Professor
DAVID J. EDWARDS, B.S., B. Arch.	Assistant Professor
H. GRIFFITH EDWARDS, B.S.	Assistant Professor
JAMES H. FINCH, B.S.	Assistant Professor
JULIAN HOKE HARRIS, B.S.	Assistant Professor
LEVY R. TINDAL, B.S.	Assistant Professor
RUPUS RIHERD GREENE, B.S., B. Arch.	Instructor
GEORGE ALEXANDER HAMPTON, B.S., B. Arch.	Instructor
MARK GARRISON HAMPTON, B.S., B. Arch.	Instructor
ROBERT F. RABUN, B.S., B. Arch.	Instructor
RALPH R. RANDALL, JR., B.S., B. Arch.	Instructor
VERNON SHIPLEY, JR., B.S., B. Arch.	Instructor

# School of CERAMIC ENGINEERING

LANE MITCHELL, B.S., M.S., Ph.D.	Professor
Director of School	
ALFRED T. NAVARRE, B.A., M.A.	Associate Professor
HARRISON W. STRALEY, B.S., M.S., Ph.D.	Associate Professor
WILLIAM C. HANSARD, B.S.	Assistant Professor
CHARLES F. WYSONG, B.S.	Assistant Professor



L. MITCHELL



P. WEBER

# School of CHEMICAL ENGINEERING

PAUL WEBER, A.B., M.S., Ph.D.	Professor
Director of School	
FREDERICK BELLINGER, B.S., M.S., D. Engrg.	Professor
J. M. DALA VALLE, B.S., M.S., Sc.D.	Professor
WILLIAM MEESE NEWTON, B.S., M.S., Ph.D.	Professor
ROBERT J. RAUDEBAUGH, B.S., Ph.D.	Professor
WALDEMAR T. ZIEGLER, B.S., M.S., Ph.D.	Professor
H. C. LEWIS, A.B., M.S., Sc.D.	Associate Professor
NATHAN SUGARMAN, B.S., M.S., Ph.D.	Associate Professor
HOMER V. GRUBB, B.S., M.S.	Assistant Professor
ROBERT N. MILLER, B.Ch.E., M.S., Ph.D.	Assistant Professor

# School of CHEMISTRY

PAUL K. CALAWAY, B.A., M.S., Ph.D.	Professor
Director of School	
WILLIAM MONROE SPICER, B.S., Ph.D.	Professor
WILLIAM SIMPSON TAYLOR, A.B., Ph.D.	Professor
WYATT CARR WHITLEY, B.S., M.S., Ph.D.	Professor
BENJAMIN BLACKISTON WROTH, A.B., Ph.D.	Professor
HENRY LEITNER EDWARDS, B.A., M.S., Ph.D.	Associate Professor
R. FRED SESSIONS, A.B., M.S., Ph.D.	Associate Professor
WALTER HERBERT BURROWS, A.B., M.S.	Assistant Professor
WILLIAM H. EBERHARDT, A.B., Ph.D.	Assistant Professor
LOYD D. FRASHIER, B.A., Ph.D.	Assistant Professor
ERLING GROVENSTEIN, B.S., Ph.D.	Assistant Professor
JACK S. HINE, B.S., Ph.D.	Assistant Professor
NORMAN H. HORTON, B.S., M.S.	Assistant Professor
FRANK A. KOPF, A.B., M.A.	Assistant Professor
JAMES T. W. ROSS, B.S., M.S.	Assistant Professor
JAMES A. STANFIELD, B.S., M.S., Ph.D.	Assistant Professor
ALLAN C. TOPP, B.S., M.S., Ph.D.	Assistant Professor



P. K. CALAWAY



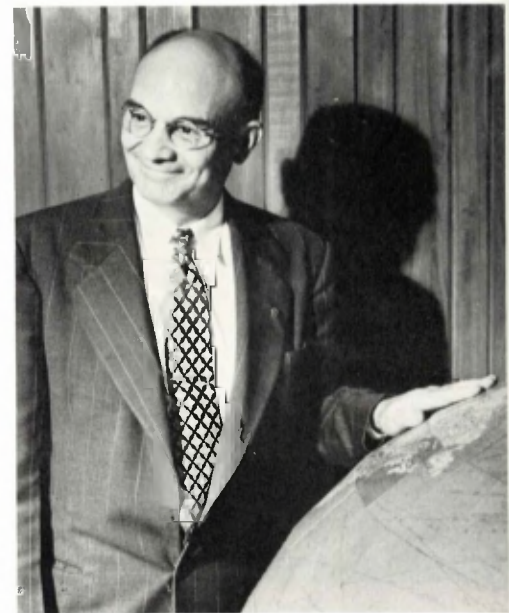
J. M. SMITH

## School of CIVIL ENGINEERING

JACK MORGAN SMITH, B.S., M.S.	Professor
Director of School	
CARL E. KINDSVATER, B.S., M.S.	Professor
RALPH PETERS BLACK, A.B., M.S.	Associate Professor
JAMES HERTY LUCAS, B.S., B.S., M.S.	Associate Professor
GEORGE F. SOWERS, B.S., M.S.	Associate Professor
GEORGE WILLARD REID, M.S.	Associate Professor
EARL IVAN BROWN, M.S.	Assistant Professor
MELVIN W. JACKSON, B. Engrg., M.S., Ph.D.	Assistant Professor
RAY K. CHALFANT, JR., B.S., M. Engrg.	Instructor
ASHBY T. GIBBONS, B.S.	Instructor
HAROLD R. HENRY, B.S., M.S.	Instructor

## School of INDUSTRIAL ENGINEERING

FRANK F. GROSECLOSE, B.S., M.S.	Professor
Director of School	
JOHN M. AVENT, B.S., M.A.	Professor
JOSEPH S. DWYER, B.S., M.S.	Associate Professor
CALDWELL B. FOOS, E.E.	Associate Professor
W. DALE JONES, B.S., M.S.	Assistant Professor
ROCKER T. STATON, JR., B.S., M.S.	Assistant Professor
HARWELL L. BOYD, JR., B.S., M.S.	Instructor
ROBERT G. CARSON, JR., B.S.	Instructor
CHARLES O. FIVEASH, B.S.	Instructor
RICHARD W. MCGUIRE, B.S., M.S.	Instructor
RALPH C. ROGERS, B.S.	Instructor
JOHN B. DAY, B.S.	Lecturer



F. F. GROSECLOSE

## School of MECHANICAL ENGINEERING

HOMER S. WEBER, Ph.D.	Professor
Director of School	
MARIO J. GOGLIA, Ph.D.	Professor
ARCHIBALD D. HOLLAND, B.S., M.S.	Professor
HOWARD W. MASON, B.S., M.S.	Professor
ROBERT L. ALLEN, B.S., M.S.	Associate Professor
DOUGLAS W. COE, M.S.	Associate Professor
OTIS M. HARRELSON, B.S., M.S.	Associate Professor
WILLIAM A. HINTON, B.S., M.S.	Associate Professor
HURLBUT W. S. LAVIER, B.S., M.S.	Associate Professor
RICHARD A. TROTTER, B.S., M.S.	Associate Professor
CLARENCE R. WEBDEN, B.S., M.S.	Associate Professor
HAYDEN ZIMMERMAN, B.S., M.S.	Associate Professor
JAMES C. CHEATHAM, B.S., M.S.	Assistant Professor
HORACE O. FOSTER, B.S., M.S.	Assistant Professor
JOE L. MORRIS, B.S., M.S.	Assistant Professor
EDWARD F. DARBY, JR., B.S., M.S.	Instructor
ALLEN MACCULLEN, JR., B.S.	Instructor
K. G. PICHA, B.S., M.S.	Instructor
WILLIAM M. RODGERS, B.S.	Instructor
K. K. WILCOX, B.S.	Instructor



H. S. WEBER

# School of ELECTRICAL ENGINEERING

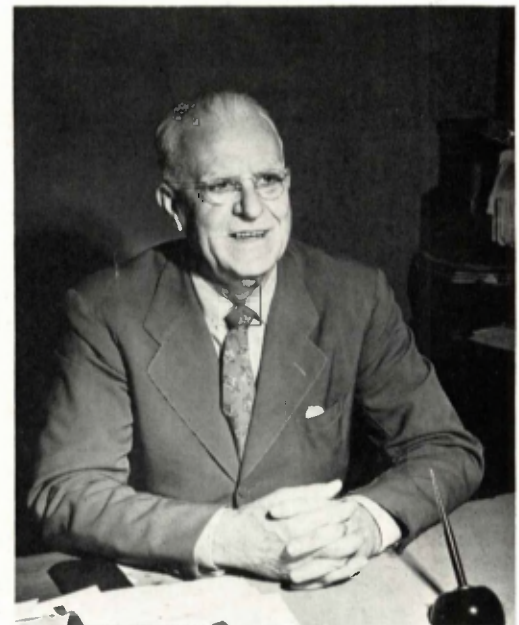
DOMENICO P. SAVANT, B.S., M.S.	Professor
Director of School	
WILLIAM M. BREAZEALE, Ph.D.	Professor
HUGO B. DULING, B.S., M.S.	Professor
WILLIAM A. EDSON, D.Sc.	Professor
MARTIAL A. HONNELL, B.S., M.S.	Professor
WALLACE J. MILLER, B.S., M.S.	Professor
THOMAS G. SEIDEL, B.S.	Professor
HOWARD L. MCKINLEY, B.S., M.S.	Associate Professor
FRANK O. NOTTINGHAM, Ph.D.	Associate Professor
EDWARD E. PERKINS, B.S., M.S.	Associate Professor
ASHFORD W. STALNAKER, E.E.	Associate Professor
ROBERT E. TEASDALE, Ph.D.	Associate Professor
EDWARD R. WESTON, B.S., M.S.	Associate Professor
WILLIAM T. CLARY, B.E.E., M.S.	Assistant Professor
CHARLES E. DURKEE, B.S., M.S.	Assistant Professor
DANIEL C. FIELDER, B.S., M.S.	Assistant Professor
DONALD W. FRASER, B.S., M.S.	Assistant Professor
MERLE R. DONALDSON, B.E.E., M.S.	Instructor
ARTHUR HAGEDORN, JR., B.S.	Instructor
WILLIAM B. JONES, JR., B.S., M.S.	Instructor
HARRY W. RAGSDALE, B.S., M.S.	Instructor
THOMAS M. WHITE, B.E.E., M.S.	Instructor



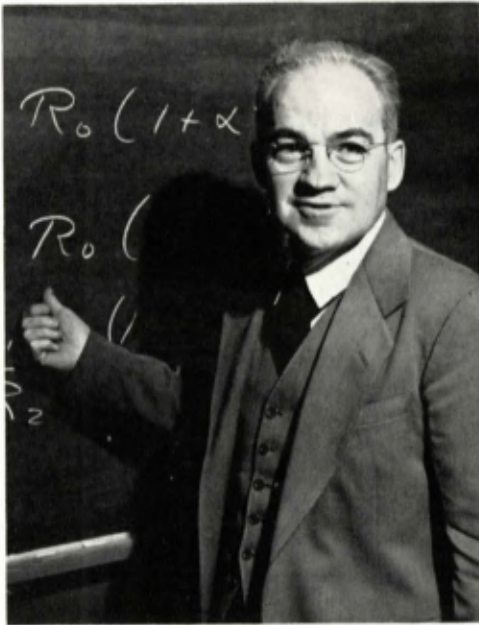
D. P. SAVANT

# School of INDUSTRIAL MANAGEMENT

HUBERT E. DENNISON, A.B.	Professor
Director of School	
MAURICE R. BREWSTER, B.S., M.B.A.	Professor
ALPHEUS R. MARSHALL, A.B., M.A., Ph.D.	Professor
WILLIAM J. PROCTOR, A.B., M.A.	Professor
NOAH WARREN, B.S., M.A., C.P.A.	Professor
FRED B. WENN, B.C.S., M.A.	Professor
ERNEST W. ALDREDGE, B.C.S., Ph.C., LL.B., M.A.	Associate Professor
ROSCOE ARANT, A.B., M.A., Ph.D.	Associate Professor
JESSE CARLTON BROWN, B.S., B.C.S.	Associate Professor
MAX L. HIBBS, B.S., M.A.	Associate Professor
RAY A. JAMES, B.C.S., B.S., M.A.	Associate Professor
A. J. SPEER, B.S.	Associate Professor
SAMUEL THOMPSON, A.B., A.M., LL.B., Ph.D.	Associate Professor
EVERETT R. BOLLINGER, JR., B.S., M.S.	Assistant Professor
TIM BARNARD CHISHOLM, JR., B.S., M.S.	Assistant Professor
WILLIAM A. FLINN, B.S., M.B.A.	Assistant Professor
JAMES W. GRIFFIN, B.A., M.A.	Assistant Professor
MORRIS J. HARDWICK, A.B., M.A.	Assistant Professor
RAYMOND SHARP, B.S., LL.B., M.S.	Assistant Professor
JOHN T. ETHERIDGE, B.B.A., M.B.A.	Instructor
CARL PAGE GLEASON, B.S., M.S.	Instructor
MALCOLM R. HENDERSON, B.B.A.	Instructor
OSCAR J. LEWIS, A.B.	Instructor
LLOYD A. SIFFORD	Special Lecturer



H. E. DENNISON



J. H. HOWEY

## School of PHYSICS

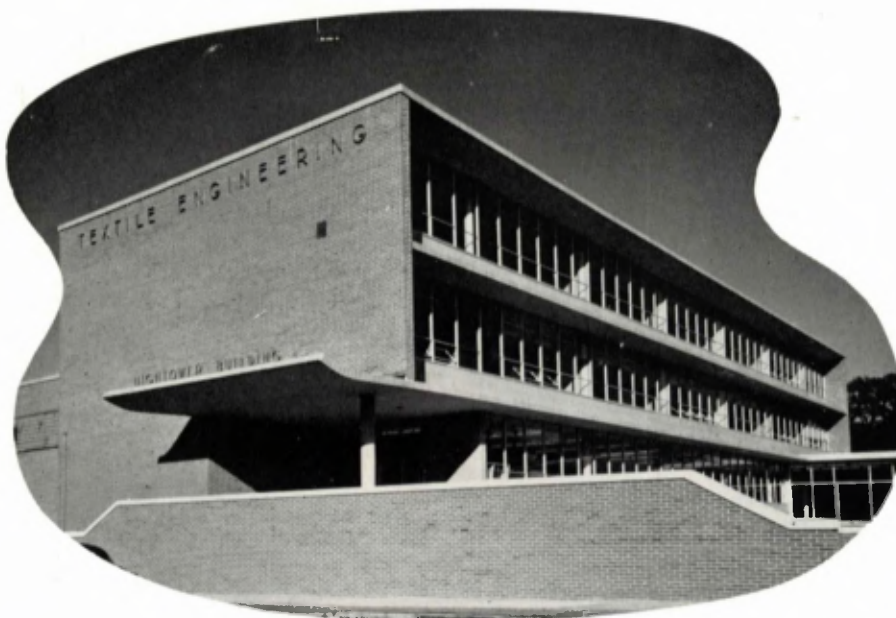
JOSEPH HERMAN HOWEY, Ph.D.	Professor
Director of School	
JAMES EMORY BOYD, Ph.D.	Professor
EARLE EDGAR BORTELL, B.S., M.S.	Associate Professor
VERNON CRAWFORD, Ph.D.	Associate Professor
WALTER P. EWALT, M.A.	Associate Professor
HAROLD M. HERREMAN, A.B., M.A.	Associate Professor
EDWARD THERON PROSSER, A.B., M.A.	Associate Professor
J. ELMER RHODES, Ph.D.	Associate Professor
L. D. WYLY, Ph.D.	Associate Professor
ANDREW E. MCARTHY, M.S.	Assistant Professor
CHARLES WILDERS TOPE, A.B.	Assistant Professor
O. B. WIKE, B.S., M.S.	Assistant Professor
LEROY A. WOODWARD, M.S.	Assistant Professor
FRANK B. BROWN, JR., B.S.	Instructor
MARTIN L. GURSKY, B.S.	Instructor
JAMES W. HALL, A.B.	Instructor
CLEMENT F. KENT, B.S.	Instructor
W. C. SIMPSON, M.S.	Instructor

## School of TEXTILE ENGINEERING

HERMAN A. DICKERT, A.B., M.A.	Professor
Director of School	
CHARLES ALFRED JONES, B.S.	Professor
JAMES L. TAYLOR, Ph.D.	Professor
RALPH LENTON HILL, B.S., M.S.	Associate Professor
GERALD B. FLETCHER, B.S.	Associate Professor
WALTER C. CARTER, Ph.D.	Assistant Professor
J. WELDON McCARTY, B.S.	Assistant Professor
RICHARD L. HEARN, B.S.	Instructor
JAMES MACDONALD, JR., B.S.	Instructor
J. R. BRANDON, B.C.S.	Supervisor of Weaving
DAVID ERNEST PHILPOTT	Supervisor of Knitting



H. A. DICKERT



The New Hightower Textile Building.

# Heads and THE DEPARTMENTS

## Department of ENGLISH

ANDREW JACKSON WALKER, A.B., M.A., Ph.D.	Professor
Head of Department	
EDWIN HUGH FOLK, A.B., M.A.	Professor
HENRY WELCH ADAMS, A.B., M.A.	Associate Professor
HAL CHAPMAN BROWN, A.B., M.A.	Associate Professor
DAVID BAINE COMER, III, A.B., M.A.	Associate Professor
EDWARD FOSTER, A.B., M.A.	Associate Professor
GLENN W. RAINEY, A.B., M.A.	Associate Professor
TOM FRANKLIN ALMON, B.S., M.A.	Assistant Professor
J. C. HORTON BURCH, Ph.D.	Assistant Professor
JAMES BLANDING HAMAN, A.B., M.A.	Assistant Professor
WILLIAM RICHARD METCALFE, A.B., M.A.	Assistant Professor
RALPH R. SPILLMAN, A.B., M.A.	Assistant Professor
PAUL G. BLOUNT, A.B., M.A.	Instructor
JAMES CHRISTOPHER BROWN, A.B., M.A.	Instructor
LOUIS J. CASTILLE, A.B., M.A.	Instructor
JOHN DICKENS, JR., B.S., M.S.	Instructor
JAMES VANCLEVE DILLARD, A.B.	Instructor
HUGH W. DIVINE, B.S., M.A.	Instructor
KENNETH MURCHISON ENGLAND, B.S., M.A.	Instructor
ABRAM FRANKLIN HAMRICK, A.B., M.A.	Instructor
THEODORE MASON HART, A.B., M.A.	Instructor
ALTON ARTHUR HOBGOOD, A.B., M.A.	Instructor
AUGUST KADOW, JR., A.B.	Instructor
SAMUEL CATHCART KETCHIN, A.B., M.A.	Instructor
JOHN JOSEPH NUGENT, A.B., M.A.	Instructor
WILLIAM LESTER WILSON, A.B., M.A.	Instructor



A. J. WALKER

## Department of ENGINEERING DRAWING & MECHANICS

WILLIAM BEN JOHNS, JR., B.S., M.S.	Professor
Head of Department	
FRANK BOGLE, B.S., M.S.	Associate Professor
FRANCIS C. BRAGG, B.S., M.S.	Associate Professor
BRYAN L. BROWN, B.S., M.S.	Associate Professor
F. M. HILL, B.S., M.S.E.	Associate Professor
ROY K. JACOBS, B.S., M.S.	Associate Professor
JOSEPH C. DURDEN, JR., B.S.	Assistant Professor
JOHN P. EDGERLY, B.S.	Assistant Professor
I. L. ELLIS, B.S.	Assistant Professor
MARK P. HARRIS, B.S.	Assistant Professor
E. M. HEIM, B.S.	Assistant Professor
KNOWLES H. HENLEY, B.S.	Assistant Professor
WILLIAM J. LARSON, B.S.	Assistant Professor
J. MANDELKER, D.Engrg.Sci.	Assistant Professor
WILBUR B. RATTERREE, B.S., M.S.	Assistant Professor
HARRY C. SAVAGE, JR., B.S., M.A.	Assistant Professor
JAMES H. ARMSTRONG, B.S.	Instructor
JOHN F. DUERST, B.S.	Instructor
PERRY M. SMITH	Instructor
JAMES H. WHITFIELD, B.S.	Instructor
WILLIAM B. CLEMENT, B.S.	Lecturer
LEROY P. STERLING, Ph.B.	Lecturer



W. B. JOHNS, JR.



R. M. ERWIN

## Department of MODERN LANGUAGE

ROBERT MILLER ERVIN, A.B., M.A., Dipl.Du.Prof. Head of Department	Professor
M. GORDON BROWN, M.A., Dr. es Let., Dr. en Fil. y Let.	Professor
JOSEPH ABELARDO CAMPOAMOR, A.B., M.A., LL.B.	Associate Professor
GEORGE FULLER WALKER II, B.S., A.B., M.A.	Associate Professor
JAMES DIXON WRIGHT, A.B., M.A., Ph.D.	Associate Professor
HERMAN W. SCHULTZ, A.B., M.A.	Assistant Professor

## Department of PSYCHOLOGY

JOSEPH E. MOORE, B.S., M.S., Ph.D. Head of Department	Professor
SIDNEY Q. JANUS, B.S.S., A.M., Ph.D.	Professor
ALBERT S. GLICKMAN, B.A., M.A.	Assistant Professor
T. BENJAMIN MASSEY, A.B., M.S.	Instructor
JAMES M. RICHARDS, B.S., M.S.	Instructor



J. E. MOORE

## Department of MATHEMATICS

DAVID M. SMITH, Ph.D. Head of Department	Professor
HERMAN K. FULMER, M.A.	Professor
ALSON H. BAILEY, Ph.D.	Associate Professor
JOHN C. CURRIE, Ph.D.	Associate Professor
CHANDLER H. HOLTON, M.A.	Associate Professor
CLARKE W. HOOK, M.A.	Associate Professor
IRVIN E. PERLIN, Ph.D.	Associate Professor
WALTER REYNOLDS, M.S.	Associate Professor
AUSTIN L. STARRETT, M.A.	Associate Professor
JAMES C. BROOKS, M.A.	Assistant Professor
ROBERT S. CHRISTIAN, M.S.	Assistant Professor
HOLLIS L. COOK, M.S.	Assistant Professor
ARTHUR E. FULTON, M.S.	Assistant Professor
WILLIAM A. MARTIN, M.A.	Assistant Professor
C. ROBERT SWENSON, M.A.	Assistant Professor
JOHN R. VAIL, M.A.	Assistant Professor
GUY A. YORK, M.A.	Assistant Professor
JAMES P. BROWN, B.S.	Instructor
SYLVAN H. CHASEN, B.S.	Instructor
LEONARD R. DANIEL, B.S.	Instructor
WILLIAM S. GNANN, A.B.	Instructor
HENRY C. GRIFFIN, B.S.	Instructor
CLYDE W. LONG, M.S.	Instructor
GEORGE MANNING, M.S.	Instructor
W. VINCENT NEISIUS, B.S.	Instructor
THOMAS I. PORTER, M.S.	Instructor
COLBERT T. PURVIS, M.S.	Instructor
JAMES G. WALL, M.A.	Instructor



D. M. SMITH

# Department of SOCIAL SCIENCES

GLENN N. SISK, A.B., M.A.	Professor
Head of Department	
ROBERT D. BOWDEN, A.B., A.M.	Assistant Professor
DAVID W. DAVIS, A.B., M.S., M.A.	Assistant Professor
GEORGE HENDRICKS, A.B., M.A.	Assistant Professor
RICHARD H. LEACH, A.B., M.A.	Assistant Professor
ROBERT S. SCHARF, Doktor der Rechte	Assistant Professor
WALTER M. ROGERS, A.B., M.A.	Instructor
GEORGE DOWMAN WILSON, A.B., M.A.	Instructor
PAUL T. EATON, Ph.D.	Lecturer
EARLE LEBARON, Ph.D.	Lecturer



G. N. SISK

## Department of GENERAL ENGINEERING

RAY L. SWEIGERT, B.S., M.A., Ph.D. . . . . Professor  
Head of Department



R. L. SWEIGERT

## Department of PUBLIC HEALTH and BIOLOGY

H. A. WYCOFF, M.S. . . . . Professor  
Director of School  
A. E. CANNON, M.S. . . . . Associate Professor  
HAROLD E. MILLER, M.S. . . . . Associate Professor



H. A. WYCOFF

## Department of SAFETY ENGINEERING

WILLIAM N. COX, B.E., M.M.E. . . . . Professor  
Head of Department  
RAYMOND N. TROWBRIDGE, B.S., M.A. . . . . Assistant Professor



W. N. COX