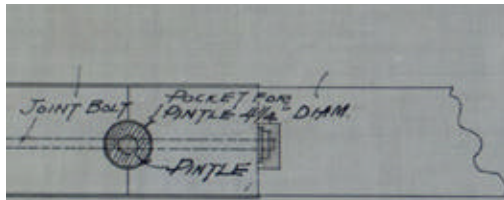
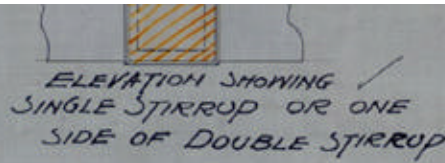


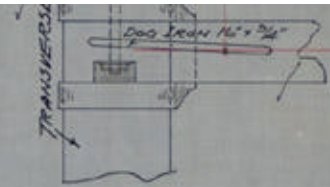
Sheet 7 - Detail of framing



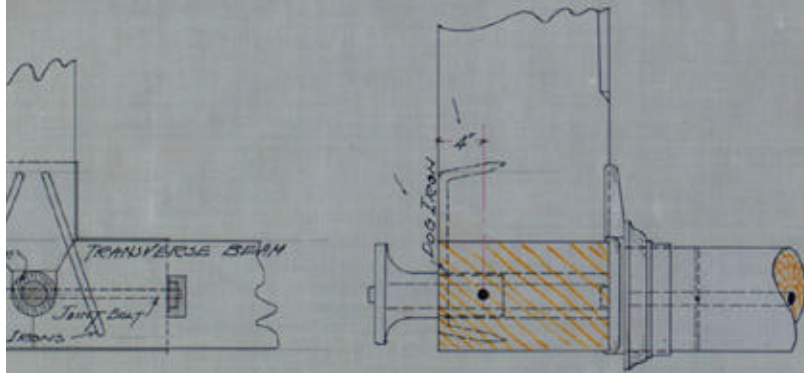
PLAN AT REGULAR FLOOR FRAMING JOINT



ELEVATION SHOWING SINGLE STIRRUP OR ONE SIDE OF DOUBLE STIRRUP



PLAN OF FRAMING FOR STICK AT FOOT OF 1ST STORY STAIRS



PLAN AND ELEVATION OF WING CAPS UNDER FLOOR BEAMS

DETAILS OF FRAMING
SCALE - 1/2 IN. = 1 FT.

NEW TEXTILE BUILDING

GEORGIA SCHOOL OF TECHNOLOGY

ATLANTA - GEORGIA

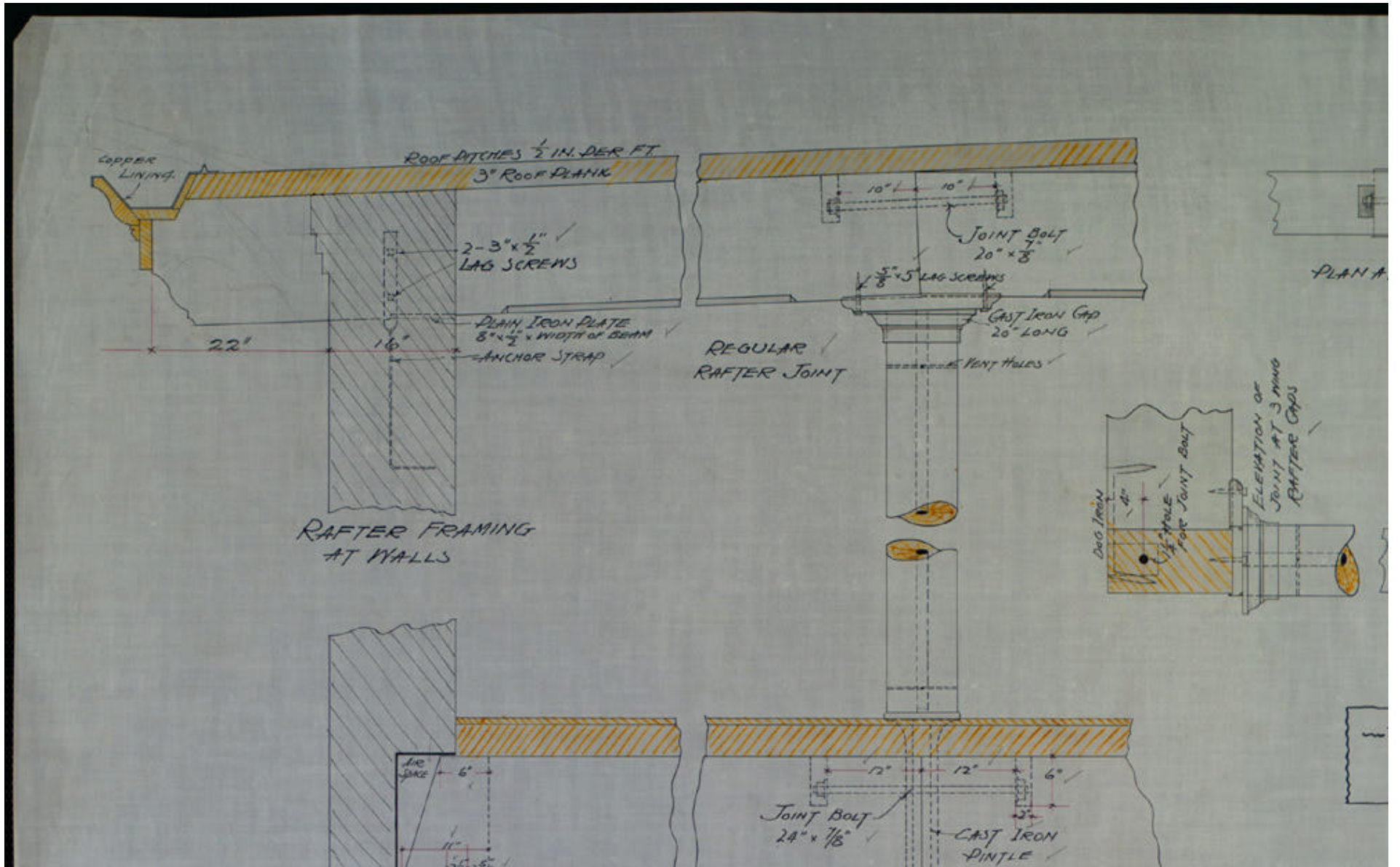
OCTOBER 26, 1898.

ORIGINAL SHEET

7



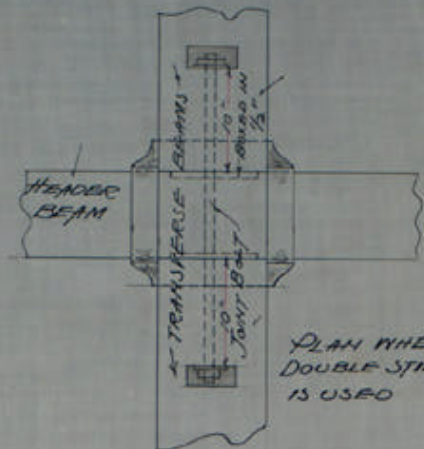
Handwritten signature or initials



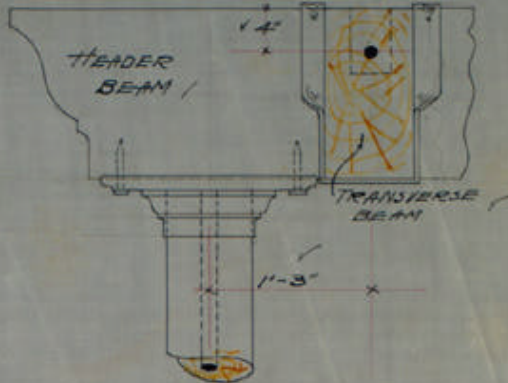
top left



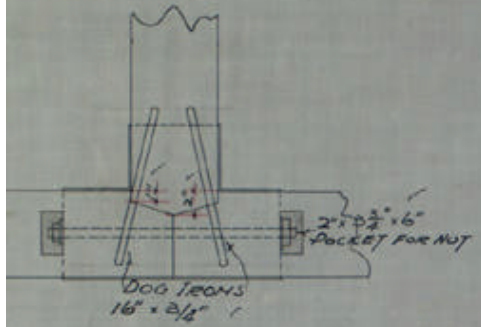
REGULAR RAFTER JOINT



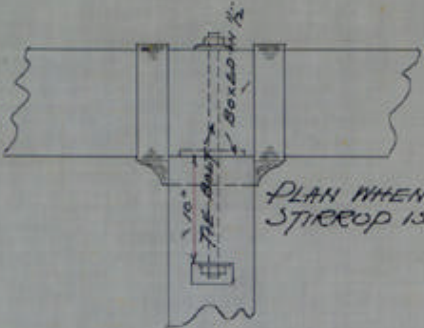
PLAN WHEN DOUBLE STIRRUP IS USED



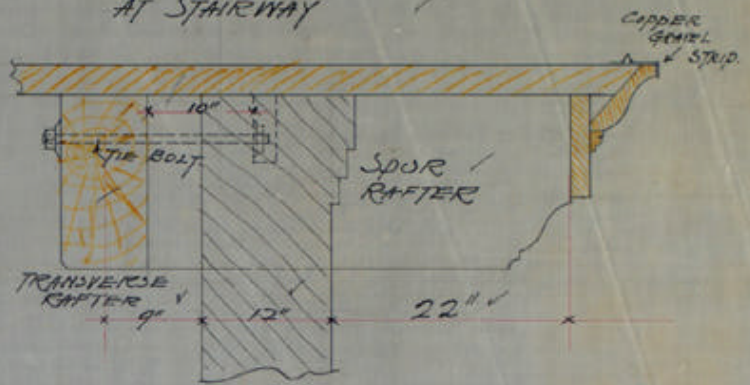
SPECIAL RAFTER FRAMING AT STAIRWAY



PLAN AT SWING RAFTER GAP

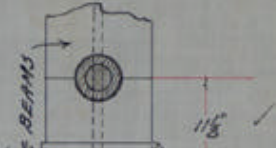


PLAN WHEN SINGLE STIRRUP IS USED



FRAMING OF SPUR RAFTERS

NOTE
ALL RAFTER GAPS TO HAVE ONE LAG SCREW IN EACH WING



top right