

Georgia
Tech

THE Whistle



PEOPLE

Science in Action

Robert Nerem, [Parker H. Petit Distinguished Chair for Engineering in Medicine and Institute Professor] at Georgia Institute of Technology, is interviewed on stem cell research. (BBC, Quicktime audio)

<http://tinyurl.com/c5a5zr>

RESEARCH

Nanotech's big booster

Bernard Marcus, co-founder of Home Depot, free-market absolutist, aquarium builder and philanthropist is way into nanotechnology these days ... as a major donor to Tech's Nanotechnology Research Center. (Fortune)

<http://tinyurl.com/cae8gn>

NEWS

Tech joins Mission Zero effort

Five months after launching missionzero.org, InterfaceFlor is focused on Mission Zero for Earth Day with efforts aimed at welcoming new partners ... and elevating the sustainability conversation. (Floor Daily.net)

<http://tinyurl.com/cm5363>

EVENTS

COMMENCEMENT

May 1 and 2

Doctorate and master's degrees will be presented May 1, from 7 to 9 p.m. at the Georgia Dome. The undergraduate spring commencement ceremony will be held May 2 from 9 a.m. to noon at the Georgia Dome.

ARTS & CULTURE

April 23-May 29

Students from the History, Technology and Society "Introduction to Museum Studies" class and the Robert C. Williams American Museum of Papermaking present "The Art of the Book," from 9 a.m. to 5 p.m. in the Neely Room of the Georgia Tech Library.

www.iac.gatech.edu

May 1-3

The Music Department will hold its annual piano sale May 3 in the Couch building. New Yamaha pianos, Disklaviers and Clavinovas, loaned to the department, will be available for reduced prices to faculty, staff and alumni. Preview appointments for May 1 and 2 can be set up by calling 678-985-2612.

www.coa.gatech.edu/music

Through May 22

The Robert C. Williams Paper Museum presents "Jiha Moon/Nate Moore: Recent Works." Museum hours are 9 a.m. to 5 p.m., Monday through Friday.

www.ipst.gatech.edu/amp

Calendar continues on page 2



Senior Nick Wellkamp, with Rhodes and Truman Scholarship Advisor Paul Hurst and Provost Gary Schuster, was named a 2009 Harry S. Truman Scholar.

Tech students recognized with national scholarships

COMMUNICATIONS & MARKETING

National scholarship recipients at the Institute this year include the Student Government Association undergraduate president, a two-time winner and one graduate recipient of an award in its second year.

Nick Wellkamp, a senior Industrial and Systems Engineering and Public Policy major, was one of 60 students nationally named a 2009 Harry S. Truman Scholar.

He was selected from more

than 600 candidates nominated by more than 285 colleges and universities. Scholars were selected on the basis of leadership potential, intellectual ability and likelihood of "making a difference." The 2009 Truman Scholars will assemble May 26 for a leadership development program at William Jewell College in Liberty, Mo., and receive their awards in a special ceremony at the Truman Library in Independence, Mo., on May 31.

"It is just an unbelievable

STUDENTS, continued on page 3

Building on excellence Tech's business school jumps; engineering continues to shine

COMMUNICATIONS & MARKETING

While most of Tech's programs held steady in the U.S. News & World Report "Best Graduate Schools" rankings, some surprises emerged.

The College of Engineering was ranked No. 4 nationwide for the fifth consecutive year in the news magazine's annual list of the best American graduate school programs.

The most notable change in the 2010 graduate rankings comes from the College of Management, which jumped to No. 22 from 29 last year in the highly competitive business schools rankings.

"These rankings underscore the national and global excellence of our graduate programs," said President G.P. "Bud" Peterson. "Our students and faculty, and the state of Georgia, will continue to be beneficiaries of the many high-caliber programs and outstanding graduates that we provide."

In addition to having one of the nation's top graduate engineering programs, 10 of Georgia Tech's 11 programs ranked in the top 10 including industrial (No. 1), biomedical (No. 2), aerospace (No. 4), civil (No. 6), electrical (No. 6), computer (No. 7), and materials (No. 8).

RANKINGS, continued on page 4

Global collaboration GT-Lorraine brokers international lab agreement

ROBERT NESMITH
COMMUNICATIONS & MARKETING

Nearly 20 years after its establishment, Georgia Tech-Lorraine (GTL) in Metz, France, has enabled a major international collaboration between the Centre National de la Recherche Scientifique (CNRS), one of the pre-eminent European research agencies, and Georgia Tech.

In 2006, CNRS and Georgia Tech created the International Mixed Unit (UMI) 2958, the first of its kind in France, allowing a mutually enriching collaboration between Tech and CNRS researchers in optics and secure communications, advanced materials and nanotechnology, and multifunctional materials.

"Within one year, state-of-the-art laboratories were built on the Metz campus, and today the UMI is the research engine of Georgia Tech-Lorraine," said GTL Vice Provost and President Yves Berthelot, a professor in the School of Mechanical Engineering. "This fosters the exchange of students, faculty and ideas that benefit the global Tech enterprise."

A public research organization, CNRS is present in more than 1,200 research and service units, extending into all scientific,



In 2006, Georgia Tech entered into an agreement with the Centre National de la Recherche Scientifique (CNRS) to create a collaboration between the research body and Georgia Tech-Lorraine. In May, the collaboration will be extended to include the Atlanta campus.

technological and societal domains in France. It is not only the largest governmental research organization in France, but is also the largest fundamental science agency in Europe.

"At the end of May, CNRS Director General Arnold Migus and Scientific Director Pierre Guillon will lead a delegation to Atlanta and sign an amendment to the 2006 agreement, opening an arm of UMI 2958 on this campus and extending the research collaboration to Computer Science," said UMI Director Abdallah Ougazzaden, also a School of Electrical and Computer Engineering professor at GTL.

CNRS visiting scholars from the UMI will now have access to resources such

as the MicroElectronic Research Center and the Marcus Nanotechnology Building. The UMI also enables Tech researchers to develop strategic opportunities, through CNRS and GTL, with major French and European Union institutions. The UMI has already attracted five major grants from the Agence Nationale de la Recherche in France, one European contract and several industrial contracts.

"The UMI has made significant progress in most of its research activities, in building state-of-the-art facilities, in contributing to the local, national and international programs and in establishing various alliances

CNRS, continued on page 2

EVENTS

CONFERENCES/ LECTURES

April 28

University of Michigan Professor Barry Dunietz presents "Exploring Conductance Switching Properties of Molecular Scale Devices—A Computational Approach," at 3 p.m. in room 3201A of the Molecular Science and Engineering building.
www.chemistry.gatech.edu

April 29

University of Michigan Professor Stephen Forrest presents "Electronics on Plastic: A Solution to the Energy Challenge, or Just a Pipe Dream?" from 1 to 2 p.m. in room G011 of the Molecular Science and Engineering building.
www.cope.gatech.edu/seminar/

April 30

Matteo Valleriani, Historian of Science from the Max Planck Institute (Berlin), presents "Practitioners, Galileo and the Emergence of Pre-Modern Mechanics," from noon to 1 p.m. in room 104 of the Old Civil Engineering building.
www.hts.gatech.edu

May 6–7

The Institute hosts the Computing at the Margins symposium, aimed at understanding the technology needs of and driving the creation of technology for under-served communities. The event will be held at the Technology Square Research Building, from 3:30 to 7:30 p.m. (May 6) and from 8 a.m. to 4:30 p.m. (May 7). Registration is \$200 before May 1, and \$250 onsite.
www.computing-margins.org

FACULTY/STAFF DEVELOPMENT

Ongoing

Georgia Tech Training Services offers a Web-based tutorial on the basics of using a state purchasing card (p-card).
www.orgdev.gatech.edu/training/

The "Emergency Preparedness" certificate program, which consists of several smaller courses, including "Fire Safety" and "Facilities Hazard Training," provides faculty and staff members with valuable information in the case of a campus emergency.
www.orgdev.gatech.edu

The "Defining Customer Service" certificate program provides campus groups and employees with the foundation for offering exemplary service, to those both on and off the campus. Four required courses and two electives are offered.
www.orgdev.gatech.edu

MISCELLANEOUS

April 29

The Advanced Technology Development Center presents its annual Entrepreneurs Showcase, featuring more than 40 ATDC and VentureLab companies, from 2 to 4

Calendar continues on page 3

Research

Looking sharp

Researchers develop new way to see single RNA molecules in living cells

ABBY VOGEL
RESEARCH NEWS

Biomedical engineers have developed a new type of probe that allows them to visualize single ribonucleic acid (RNA) molecules within live cells more easily than existing methods. The tool will help scientists learn more about how RNA operates within living cells.

Techniques scientists currently use to image these transporters of genetic information within cells have several drawbacks, including the need for synthetic RNA or a large number of fluorescent molecules. The fluorescent probes developed at the Georgia Institute of Technology circumvent these issues.

"The probes we designed shine bright, are small and easy to assemble, bind rapidly to their targets, and can be imaged for hours. These characteristics make them a great choice for studying the movement and location of RNA inside a single cell and the interaction between RNA and binding proteins," said Philip Santangelo, an assistant professor in the Wallace H. Coulter Department of Biomedical Engineering at Georgia Tech and Emory University.

Details of the probe production process and RNA imaging strategy were published online in the journal *Nature Methods* on April 6. In addition to Santangelo, graduate student Aaron Lifland, Emory University Associate Professor Gary Bassell and Vanderbilt University Professor James Crowe Jr. also contributed to this research. This research was funded by new faculty support from Tech.

In the study, the probes—produced by attaching a few small fluorescent molecules called fluorophores to a modified nucleic acid

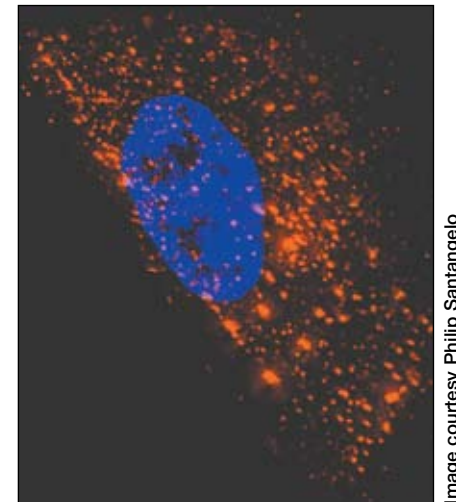
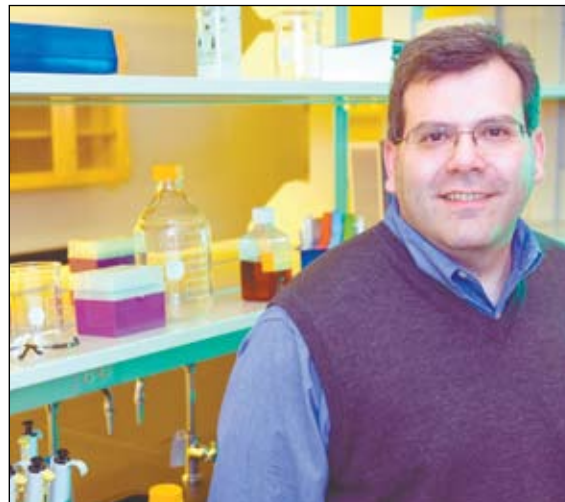


Image courtesy Philip Santangelo

Biomedical Engineering Assistant Professor Philip Santangelo has helped develop a new technique for visualizing ribonucleic acid (RNA) molecules in a living cell. Image of an epithelial cell showing 1,400 native mRNA granules (red) taken at several heights above and below the nucleus (blue).

sequence and combining the sequences with a protein—exhibited single-molecule sensitivity and allowed the researchers to target and follow native RNA and non-engineered viral RNA in living cells.

"The great thing about these probes is that they recognize RNA sequences and bind to them using the same base pairing most people are familiar with in regards to DNA," Santangelo said. "By adding only a few probes that would bind to a region of RNA, we gained the ability to distinguish a targeted RNA molecule from a single unbound probe because the former lit up two or three times brighter."

For their experiments, the team used a bacterial toxin to transport the probes into living cells—a delivery technique that when combined with the high affinity of the probes for their targets required significantly fewer probes than existing techniques. The toxin created several tiny holes in the cell

membrane that allowed the probes to enter the cell's cytoplasm.

The researchers tested the sensitivity of conventional fluorescence microscopy to image individual probes inside a cell. Previous studies showed that these techniques were able to image an accumulation of probes inside a cell, but the current study demonstrated that individual probes without cellular targets could be observed homogeneously distributed in the cytoplasm with no localization or aggregation.

Santangelo is currently trying to improve the probes by making them smaller and brighter, while also using them to investigate viral pathogenesis and other biological phenomena.

For more information

www.bme.gatech.edu

CNRS, continued from page 1

with academic and industrial partners," said Ougazzaden. "We are very grateful for the support of Georgia Tech, CNRS and the local authorities of the Region Lorraine in creating an exceptional lab with international culture and a great opportunity for our scientists and students."

"This extension of the GT-CNRS lab to Atlanta continues to build and expand the strong partnership between Tech and CNRS," said Vice Provost for International Initiatives Steven McLaughlin. "Not only does it grow both of our research portfolios into new areas, but it continues to serve as a model for how strategic international research partners can both benefit from a project that cannot be done by either one individually."

"This is the model for all of our international initiatives and one that has proven successful time and again by GT-Lorraine."



The agreement creating the International Mixed Unit collaboration was formalized in 2006. It was attended by then-Provost Jean-Lou Chameau (third from left).

Established in 1990, GTL offers a year-round campus, with typical enrollment of 150 to 200 students per semester. It continues to receive strong financial support from French sources. More than 1,400 master's degree students in mechanical engineering, electrical and computer engineering, and computer science and 100 faculty members have spent at least one semester in Metz. More than 1,200 Tech alumni—primarily from France—now

work in Europe. Some, Berthelot says, are in key positions.

In addition, nearly 1,000 undergraduate students have benefited from the Summer Program in Metz since it started in 1998, with 200 students scheduled to attend this summer. Berthelot points out that, in addition to expanding students' exposures to European culture, students have also the opportunity to pursue a double master's degree from Tech and leading

partner institutions in France. Some students also have access to internships with GTL's corporate sponsors.

"GTL carries the mark of excellence that characterizes Georgia Tech," Berthelot said. "Tech's reputation is growing in France and in Europe because of GTL and the UMI."

For more information

www.GT-Lorraine.eu

THE Whistle
Georgia Tech's
Faculty/Staff Newspaper

Published weekly throughout the academic year and biweekly throughout the summer by Georgia Tech Communications & Marketing.

Editor: Robert Nesmith
Photos: Rob Felt, unless noted

Calendar submissions e-mailed to editor@comm.gatech.edu, or faxed to 404-894-7214 must be sent at least 10 days prior to desired publication date. Classified submissions are on a first-come, first-served basis. For more information, call 404-385-4142.

Archived issues of The Whistle can be accessed electronically through the Georgia Tech Web page, or directly at www.whistle.gatech.edu.

Georgia Tech is a unit of the University System of Georgia.

Georgia Tech
Communications & Marketing
Wardlaw Center
177 North Avenue
Atlanta, Georgia 30332-0181

Groundbreaking held for facility



1969 alumnus Stephen Zelnak attended the April 9 groundbreaking for the Zelnak Center, a 20,000-square-foot practice facility for Tech's men's and women's basketball teams. His donation was the lead gift of the \$8.5 million facility, scheduled to be completed in October. From left are President G.P. "Bud" Peterson, Judy Zelnak, women's basketball coach MaChelle Joseph, Zelnak, men's basketball coach Paul Hewitt and Tech Athletics Director Dan Radakovich. Praising the Institute's "student-athletes," Zelnak said this was a way to help teams schedule practices in a way to help academically, not just athletically. "We thought this was a place where we could make a difference," he said.



In Brief . . .

Rohatgi recognized by EPA

Ajeet Rohatgi, a Regents' Professor in the School of Electrical and Computer Engineering, was recently recognized by the U.S. Environmental Protection Agency (EPA) and the American Solar Energy Society (ASES) for a lifetime's contribution to making solar technology a realistic, low-cost energy solution.

The EPA honored Rohatgi as an Individual Climate Protection Award Winner in a ceremony recently held at the Kennedy Center in Washington, D.C.

In addition, ASES selected him as this year's Hoyt Clarke Hottel Award Winner, for contributions in solar energy technology, and will honor him at the SOLAR 2009 conference, in Buffalo, New York, later this year.

www.ece.gatech.edu

Participants sought for study

The Georgia Tech and Emory Health Systems Institute Child Study Lab is seeking children participants aged 15 to 27 months.

The study, researching how to detect autism early in life, will examine various aspects of a child's development, including play, attention and communication.

Studies usually take 30 minutes, during which time the child's parent or guardian will always be present. To set up an appointment, visit the Web site or call Jenny Mathys at 404-727-8350 for more information.

childstudy.hsi.gatech.edu

Online parking registration begins

Online registration for 2009-2010 parking permits continues through June 30. To register, visit Parking and Transportation's Web site, and click on the registration prompt. Questions should be directed to info.parking@parking.gatech.edu.

www.parking.gatech.edu

EVENTS

p.m. at The Biltmore.
www.atdc.org/companies

The School of Literature, Communication and Culture presents its spring Digital Media Demo Day, from 4 to 7 p.m. in the Skiles building.

lcc.gatech.edu/graduate/demoday

May 4-6

A seminar on Dynamic Facilitation Skills will be presented from 8:30 a.m. to 4:30 p.m. in room 1116 West of the Klaus Advanced Computing building. Cost is \$500 for Georgia Tech faculty and staff.

www.dynamicfacilitation.com

May 11-12

The Second International Symposium on Fiber Recycling will be from 8 a.m. to 5 p.m. at the Global Learning Center. Registration is \$350.

www.prism.gatech.edu

May 13-14

The Symposium on Sustainable Polymers will be held from 7:30 a.m. to 5 p.m. at the Global Learning Center.

www.ptfe.gatech.edu

May 20

Go T.E.C.H. sponsors a Faculty and Staff Health Fair, from 11 a.m. to 2 p.m. in the Student Center Ballroom, as part of National Employee Health and Fitness Day.

www.gotech.gatech.edu

Ongoing

Techmasters—Tech's chapter of Toastmasters International—meets every Thursday at 7:30 a.m. in room 102 of the Microelectronics Research Center.

www.techmasters.gatech.edu

For a more comprehensive listing of events updated daily, visit www.gatech.edu/calendar.

CLASSIFIEDS

AUTOMOBILES/ MOTORCYCLES

2000 GMC Jimmy, \$3,500 firm. 6 cyl. 4WD, pwr. doors, windows, seat. New A/C, lifetime brake pads, 15K on new trans. Uses no oil and no leaks. 150K hwy miles w/ synthetic oil. Call Jim at 770-855-3803.

Acura CL 3.2 Type S Automatic. 2002, 100,000 miles. Silver, black leather interior. Very good cond. 3.2L V6 24V, 20+ MPG city, 33+ MPG hwy. 5-speed auto, ABS, VSA, cruise control, xenon lights. Power windows, seats, mirrors, auto heat and A/C, 6-CD changer. Dealer maintained. \$8,500. E-mail vanrooijen@mail.gatech.edu.

REAL ESTATE/ ROOMMATES

Custom 5BR on 5 acres w/stream on large acreage in southern Cherokee County. 45 minutes to Tech campus, 40 minutes to GTRI Cobb County Research Facility. Single owner. Incorporates many energy/utility-independence features. Visit <http://home.angel-strike.com>.

For sale: 2 BR/2.5BA townhouse at Cross Creek Condominiums. Near downtown. HW floors downstairs, updated kitchen with new appliances, large courtyard patio, end unit. Asking \$160,000. E-mail suellen.robertson@parking.gatech.edu for photos.

2BR/2BA 1,300 sq. ft., 2-level town home. Inman Park, 3 miles from campus. 1 year lease, renewable: \$1,695/mo. Roommate-friendly floor plan. E-mail acnq@yahoo.com for pics, or call 678-794-3506.

Classifieds continues on page 4

STUDENTS, continued from page 1

honor to receive this award," said Wellkamp. "It is a great reaffirmation of the efforts that I have put in at Georgia Tech."

Wellkamp served as Student Government Association president for the 2008-2009 academic year and has led efforts on conservation, academic policies and representing the student voice in the transition in Institute leadership and the budget crisis.

"The Truman Scholarship recognizes future leaders who have been identified as change agents," said Wellkamp. "It was a long and intense application process, but well worth the effort."

Wellkamp said he plans to use the scholarship to go to law school.

Each Truman Scholarship, established by Congress in 1975 as a memorial to the 33rd President, provides up to \$30,000 for graduate study. Scholars also received priority admission and supplemental financial aid at some premier graduate institutions, leadership training, career and graduate school counseling, and special internship opportunities within the federal government. Recipients must be U.S. citizens, have outstanding leadership potential and communication skills, be in the top quarter of their class, and be committed to careers in government or the not-for-profit sector.

Junior Thomas Christian, earth and atmospheric sciences and international affairs major, was named a Morris Udall Scholar for the second consecutive year.

He was the first Tech student to win the award and is now the first student to win the award twice. He was one of 80 students, selected from more than 66 colleges and universities.

"Being a recipient of the Udall Scholarship clearly has monetary and prestigious benefits but winning this for the second year in a row, being one of only seven this year to achieve this, validates my goals for the future and provides me with the support to make those goals become a reality," said Christian, who hopes to earn a master's degree in public policy or international policy studies with a focus on environmental policy.

"After finishing my academics, I hope to enter a career in the federal government doing work related to the environment and international affairs."

A 14-member independent review committee selected this year's group of scholars on the basis of commitment to careers in the environment, health care or tribal public policy; leadership potential; and academic achievement. Each scholarship provides up to \$5,000 for one year.

This prestigious scholarship has generated more than 1,000 Udall Scholars since the first awards in 1996.

Graduating senior Sarang Shah has been named a 2010 George J. Mitchell Scholar, sponsored by the U.S.-Ireland Alliance. He was announced the winner of this award in November.

"Winning this award means I will be able to pursue my interest of researching fundamental theoretical physics and the nature of space, time, matter and energy with the world-class community of theoretical physicists at Dublin Institute for Advanced



Thomas Christian



Sarang Shah

Studies, Trinity College Dublin, and the University College Dublin," said Shah, who is excited about being a member of the Mitchell Scholarship community as well.

"Being a part of these communities and making a lifelong connection with the science and people of Ireland are precisely my motivations for applying for the Mitchell Scholarship in the first place."

Shah plans to graduate this spring with dual bachelor's degrees in physics and public policy. He then plans on pursuing his research and a doctorate in theoretical physics at the University College Dublin.

During his time at Tech, Sarang conducted research in the field of theoretical neuroscience and developed textual analysis software to help map data.

Twelve Mitchell Scholars between the ages of 18 and 30 are chosen annually for one year of postgraduate study in any discipline offered by institutions of higher learning in Ireland and Northern Ireland. Applicants are judged on three criteria: academic excellence, leadership and a sustained commitment to service and community. The Mitchell Scholarship provides tuition, housing, a living expenses stipend and an international travel stipend.

The Mitchell Scholarship is a national competitive fellowship, named to honor the former U.S. Senator's pivotal contribution to the Northern Ireland peace process and is designed to introduce and connect generations of future American leaders to the island of Ireland, while recognizing and fostering intellectual achievement, leadership and a commitment to public service and community.

Tech Police investigating office burglaries

COMMUNICATIONS & MARKETING

Coming on the heels of reported robberies of students, Georgia Tech Police are also investigating the burglary of several campus offices during the last several weeks.

“Over the last two months, we have seen break-ins in Skiles, the Ford Environmental Science and Technology building, Boggs, Old Civil Engineering and the

Montgomery-Knight buildings,” said Officer Ian Mayberry with Tech’s Crime Prevention Unit.

Several office doors were forced open, and desktop and laptop computers were the primary items taken.

While these thefts are under investigation, Mayberry reminds the campus community that they can take some steps to prevent being victimized.

“Make sure that your door is shut and locked whenever you

are not inside,” he said. “When you leave for the evening, take portable electronics with you, or secure them in a locked drawer of your desk. Lastly, if you see someone in your building that you do not know or who is acting suspiciously, make sure you call the police immediately.”

Dial 911 from any campus hardwired phone to contact the Police Department in case of an emergency. For all other calls, dial 404-894-2500.

RANKINGS, continued from page 1

Of particular note, three programs moved up in the rankings: environmental engineering (No. 5), mechanical engineering (No. 6), and nuclear engineering (No. 8).

Moving up to the No. 22 slot (No. 7 among public universities), the College of Management tied with Emory University in the ranking of full-time MBA programs.

For more information

www.usnews.com

2009 Annual Retirement Dinner

Long-standing members of the Georgia Tech community will be honored at the Annual Retirement Dinner, to be held May 19, from 6 to 9 p.m. in the Gordy Dining Room of the Wardlaw Center. Those wishing to attend should RSVP by May 1.

www.events.gatech.edu/institute/retirement.html

1964-2009 Charles L. Liotta Chemistry	1979-2008 David H. Gifford Mechanical Engineering
1964-2008 John B. Peatman Electrical and Computer Engineering	1979-2009 Barbara J. Harris Housing
1966-2009 Gerald E. O'Brien Sciences	1979-2008 Brenda J. Hill Georgia Tech Research Institute
1969-2009 Nellie F. Nuriddin Accounts Payable	1979-2009 Mark H. Hodges Georgia Tech Research Institute
1970-2009 Hollis W. Hodges Enterprise Innovation Institute	1979-2008 David E. Schmieder Georgia Tech Research Institute
1972-2008 Janice R. Green Georgia Tech Research Institute	1979-2009 Diana L. Turner Distance Learning and Professional Education
1973-2008 Johan G. F. Belinfante Mathematics	1979-2009 J. Craig Wyvill Georgia Tech Research Institute
1973-2009 Jerry A. Cloninger Chemistry and Biochemistry	1980-2008 Charles M. Estes Jr. Enterprise Innovation Institute
1973-2009 Charles T. Cooke Facilities	1980-2008 Mark G. Frost Georgia Tech Research Institute
1975-2008 Russell M. Mersereau Electrical and Computer Engineering	1980-2008 Linda M. Heika Information Technology
1975-2009 William L. Meyer Aerospace Engineering	1980-2009 Kenneth E. Johnson Georgia Tech Research Institute
1975-2008 John L. Wood Physics	1980-2009 Natasha Laughrun Facilities
1976-2009 August W. Giebelhaus Jr. History, Technology and Society	1980-2008 Rachel G. Rodemoyer Human Resources
1976-2009 Mercedes E. Saghini Architecture	1981-2009 Erian A. Armanios Aerospace Engineering
1977-2009 Shirley A. Camden Accounts Payable	1981-2008 Charles E. Brown Office of the Provost
1977-2009 Jerry Johnson Facilities	1981-2008 James W. Larsen Mechanical Engineering
1978-2008 Terry L. Maple Psychology	1982-2009 Queen E. Gordon Enterprise Innovation Institute
1979-2009 Robert S. Albright Jr. Distance Learning and Professional Education	1982-2009 Thomas Lamb Post Office

1982-2008 Paul F. Pritchett Georgia Tech Research Institute	1983-2008 Lynn Boyd Development	1983-2009 Rayford Mills Facilities	1983-2009 Oscar Slaughter Housing	1983-2009 Alvis W. Turner Jr. Electrical and Computer Engineering	1984-2009 Janice L. Davis Civil and Environmental Engineering	1984-2009 Ernest J. Walker Career Services	1985-2008 Lorand Csiszar Electrical and Computer Engineering	1985-2009 Paula K. Ferguson Georgia Tech Research Institute	1985-2009 Ernest J. Holder Georgia Tech Research Institute	1985-2008 Rose Jacobsen Office of the President	1985-2009 Debbie S. McCloud Human Resources	1986-2008 Janet M. Arnold Electrical and Computer Engineering	1986-2008 Jane L. Berman Development	1986-2008 Margaret H. Boehme Electrical and Computer Engineering	1986-2008 Judy A. Harper Facilities	1986-2009 Cynthia T. Jordin Career Services	1987-2008 Carolyn E. Bruce Information Technology	1987-2009 Randolph M. Case Georgia Tech Research Institute	1987-2009 Jerry D. Hyman Accounts Payable
---	---------------------------------------	--	---	---	---	--	--	---	--	---	---	---	--	--	---	---	---	--	---

1987-2008 Karen Tyree Chemistry and Biochemistry	1988-2008 Earl R. Barnes Industrial and Systems Engineering	1988-2009 Carol K. Gue Office of the President	1988-2008 C. D. Papanicolopolous Georgia Tech Research Institute	1988-2008 Duane C. Tate Georgia Tech Research Institute	1988-2009 Jane G. Weyant Engineering	1989-2009 Carol Ann Johnston Distance Learning and Professional Education	1989-2009 Linda C. Mitchell Human Resources	1989-2008 Delores C. Walker Distance Learning and Professional Education	1989-2009 Lee G. Zacarias Environmental Health and Safety	1991-2008 James E. Jones Housing	1992-2008 Jeanne McKown Development	1992-2008 Zack E. Osborne Enterprise Innovation Institute	1993-2008 Robert J. Gregor Applied Physiology	1993-2009 Allyana Ziolk Computing	1994-2009 Delia Blakey Ferst Center for the Arts	1994-2009 John H. Elton Mathematics	1994-2008 Charles E. France Enterprise Innovation Institute	1994-2009 Herbert S. Lehman Georgia Electronic Design Center	1994-2009 Nettie C. Schneider Scholarships and Financial Aid
--	---	--	--	---	--	---	---	--	---	--	---	---	---	---	--	---	---	--	--

1995-2009 Yvonne B. Kissi Office of the Provost	1995-2008 Abrey C. Oliver Facilities	1995-2008 Marlon S. Thomas Housing	1996-2008 Kenneth Dollar Mechanical Engineering	1996-2008 Paul A. Ohme Center for Education Integrating Science, Mathematics, and Computing	1996-2009 Shashikant G. Patel Electrical and Computer Engineering	1997-2009 Dehavilland Baugh Facilities	1997-2008 Barbara C. Hafer Internal Auditing	1997-2009 Masako Kanno Modern Languages	1997-2009 Tom O. Pearson Business Services	1997-2009 Earlean Angel Thornton Undergraduate Admission	1997-2008 Margaret S. Wesley Facilities	1998-2008 Sharon A. Koberg Georgia Tech Research Institute	1998-2008 Joanne Tobin Library and Information Center	1999-2009 Sonia Roy Library and Information Center	1999-2008 Suzette E. Willingham Computing	2003-2008 Susan H. Longuepee Chemistry and Biochemistry	2004-2009 Victor K. Tripp Georgia Tech Research Institute	2006-2009 Richard D. Chapman Georgia Tech-Savannah	2008-2008 Marion D. Brooks Athletic Association
---	--	--	---	---	---	--	--	---	--	--	---	--	---	--	---	---	---	--	---

CLASSIFIEDS

For sale or rent: Renovated brick ranch on cul-de-sac w/ huge fenced yard, new appliances, HVAC. HW floors throughout, open floor-plan, perfect for entertaining. 2BR, large office or bonus room, formal DR, huge eat-in kitchen, LR, screened-porch, deck. Call 404-229-3524.

For rent: 3BR/2.5BA with 2 extra rooms. Master BR w/ tray ceiling, walk-in closet. Large LR w/ fireplace; big kitchen and laundry room. Dbl. garage. Fenced back yard. Excellent schools: Brookwood HS, Crews MS and Craig ES. \$1,100 deposit and \$1,100 monthly rent. Call 770-617-1189.

For sale: Split level house in Lilburn, Camp Creek/Parkview schools, level lot, on a cul-de-sac. Call Matt Bass at 678-938-4015.

For sale: 3BR/2BA, 4-sided brick house with 2-door garage and beautiful back yard on almost 1 acre of land. Located in Lithonia, close to Stone Mountain Park and Mystery Valley golf course. Owner must sell and will be willing to do a quick sale. Call 770-469-8220.

For sale: 4BR/3BA mid-century, updated home in Collier Hills. Open floor plan, skylights, cul-de-sac, fenced-in level yard. Great neighborhood: quiet, yet close to everything. New listing at \$460k. Must see. Best deal in the area. Sellers are motivated. E-mail michelle.laplaca@bme.gatech.edu for more info.

For rent: Large (1,000 sq. ft.) Daylight Basement studio apartment in quiet residential neighborhood, separate entrance, 6 miles west of Tech, easy access to MARTA, off-street parking, utilities incl. \$650 a month with deposit. E-mail wkbauchspies@gatech.edu.

SPORTS/FITNESS/ RECREATION

3BR/2BA peaceful, furnished, waterfront cottage along the southern Outer Banks, N.C. \$150/day, 3-day min. Pets OK. Boat slip. E-mail jud.ready@gatech.edu. Visit <http://travel.ajc.com/ads/158>.

FURNITURE/APPLIANCES

Bieffe drafting table, incl. Vemco drafting machine. Table top size: 48" x 38" with Borco cover. \$250 cash. Can be delivered to Tech campus. Call Tim Purdy at 404-216-4227 or e-mail tim.purdy@coa.gatech.edu. Pics available at www.timpurdydesigns.com.

Pine armoire, 82" x 54" x 25", w/ three movable interior shelves. Can be used as an entertainment center, for BR storage, or a decorative piece in the living/dining room. Asking \$650. Will deliver. E-mail Rose Jacobsen at rojacobsen@carnegie.gatech.edu.

For rent: 3BR/2BA in quiet Buckhead neighborhood. 2+ acres. \$1,750/mo. Deposit, one-year lease required. Call Mike at 678-794-6275.

2BR/2BA apt. for rent, 2 miles from Tech (5 min. drive or 10 min. bike ride). Great roommate layout, w/ gym and pool. Laundry in apartment, gourmet kitchen, beautiful HW floors. \$1,200 a month. E-mail carroll@math.gatech.edu or see www.601mcgillpark.com for pics and information.

MISCELLANEOUS

Moving sale. DVDs, CDs & VHS, \$3 to \$10. E-mail for Excel file w/list of titles to mccott@gatech.edu. Baby walker, \$25. Elmo baby stroller, \$15. Baby bouncer, \$30. Sealy baby bed mattress, \$35. Play pen pad, \$10. Call Makesia at 770-296-0603.

Check out more ads at www.whistle.gatech.edu. Ads appear and run for three weeks in the order in which they are received. E-mail submissions to editor@comm.gatech.edu.