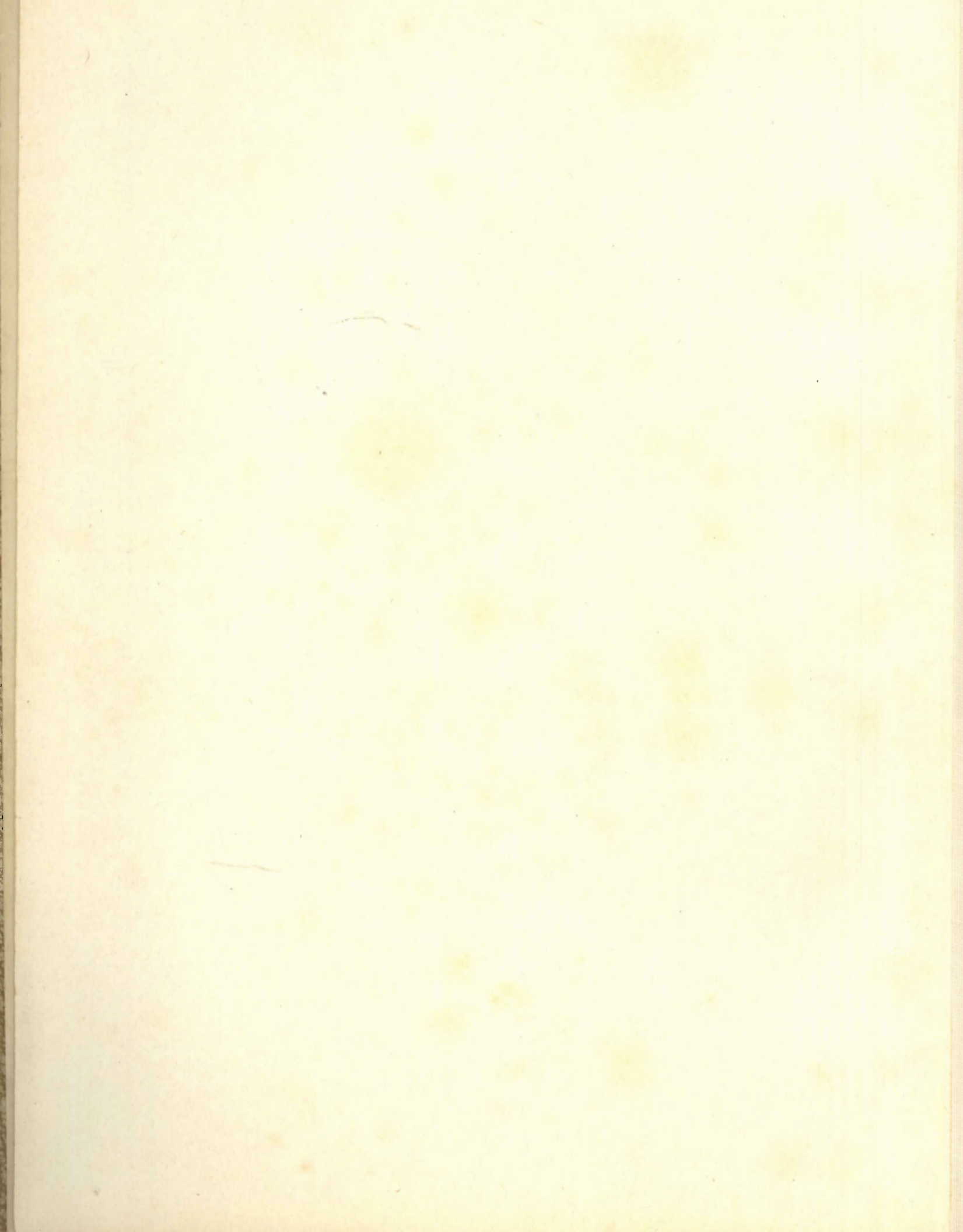


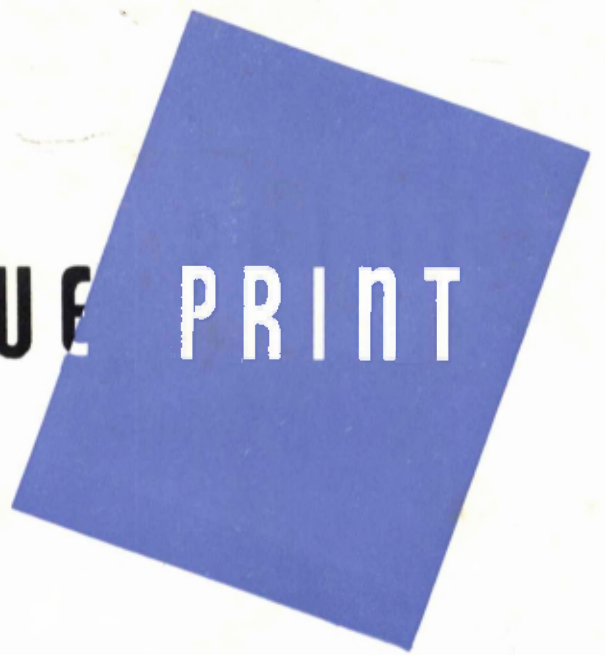
# *the Blue Print*

*Nineteen Hundred and Forty two*





**THE 1942 BLUE PRINT**





THE 1942 BLUE PRINT

Published by the Students  
of the

GEORGIA SCHOOL OF TECHNOLOGY  
ATLANTA, GEORGIA

Copyright by  
JACKSON S. SMITH, Editor-in-Chief  
J. POLLY POOLE, Business Manager

Blue Print



mt



Realizing that in years to come pictures rather than words would do more to recall the memories of college life at Tech, the 1942 BLUE PRINT has attempted to depict the life on our campus with photographs—including many snapshots. A touch of the brighter side has been added by using natural color photographs to introduce the different sections of the book.

We, the staff, therefore present to you the 1942 BLUE PRINT trusting that you will consider it an accomplishment well worth our efforts.

# Foreword



# C O N T E N T S

THE SCHOOL  
Classes

MILITARY

FRATERNITIES

ACTIVITIES  
Publications  
Major Honors  
Minor Honors

FEATURES  
Beauties  
Favorites

ATHLETICS



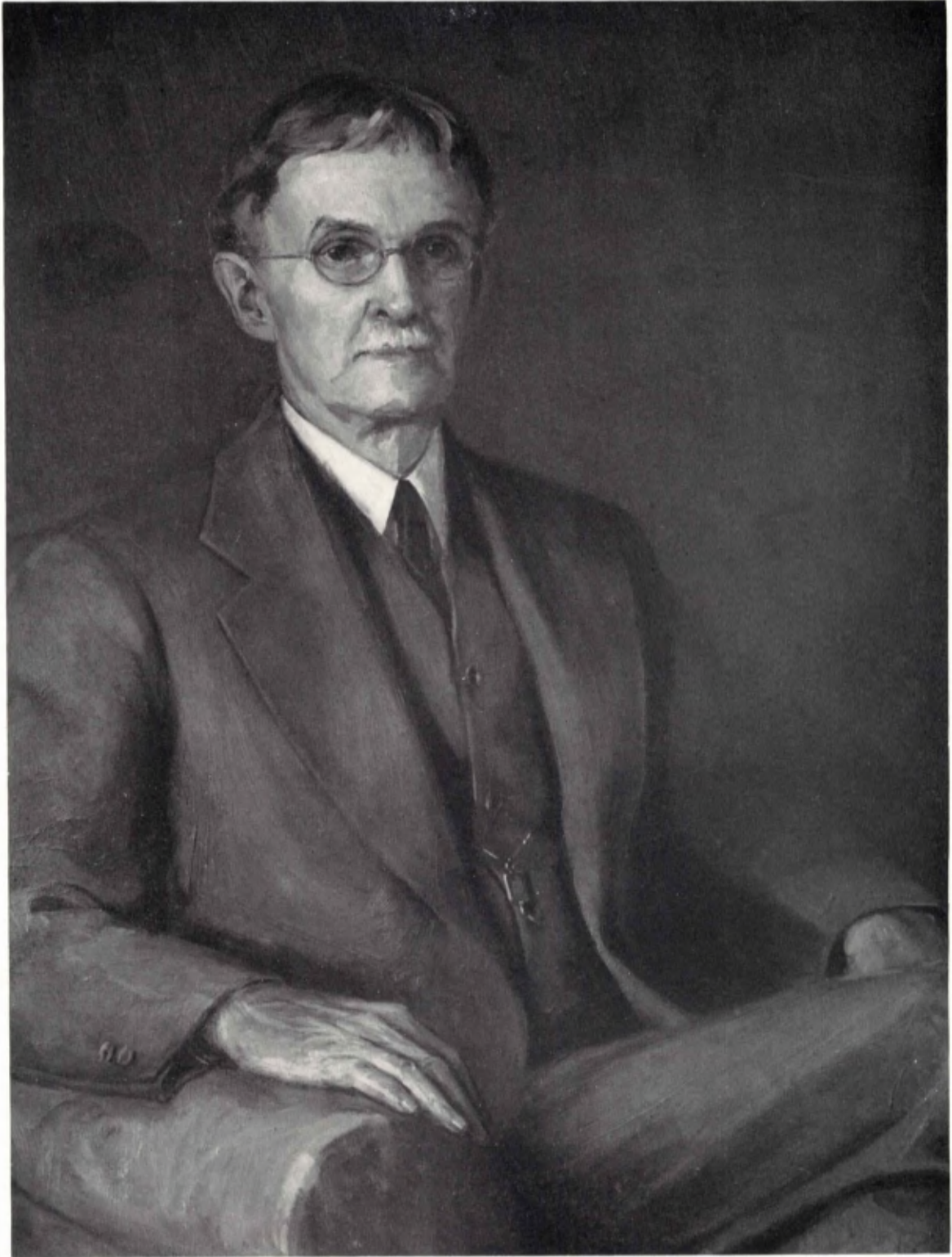
# We Dedicate

the nineteen forty-two  
BLUE PRINT

to

DOCTOR  
JOHN B. CRENSHAW

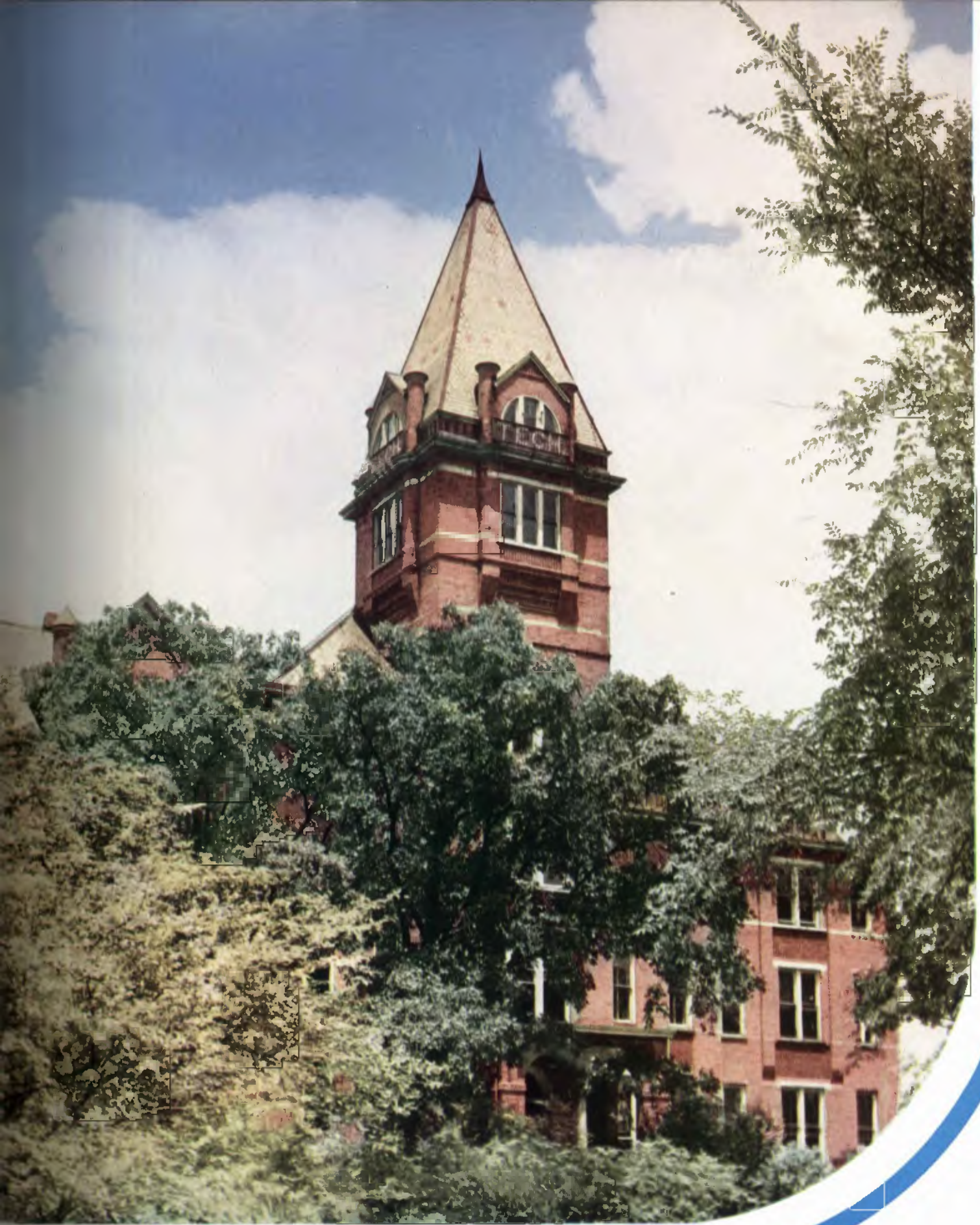
An educator and an athlete of great renown, who for over thirty years has devoted his energies to the advancement of Georgia Tech in his positions as head of the Modern Language department and director of various athletics.





# THE SCHOOL

---



A R O U N D



Ceramic  
Engineering Building



Mechanical  
Engineering Building



T H E   B L U E   P R I N T

# THE TECH CAMPUS

Kearney  
building

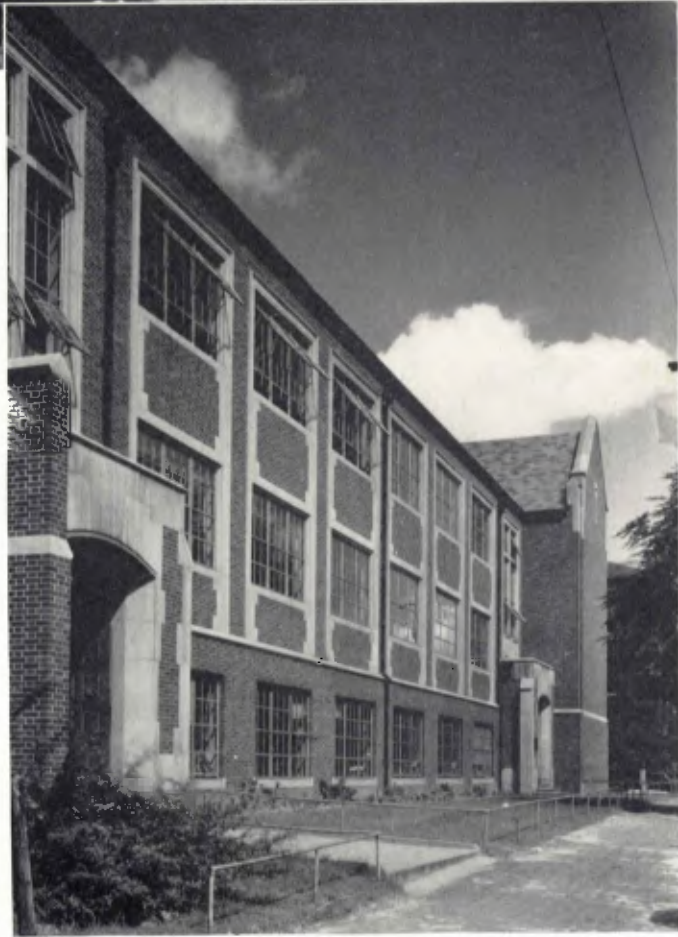


The Carnegie Library





Textile  
Engineering Building



Mechanics and Engineering Drawing Building



TECH •



The Naval Armory

Harrison Dormitory



# OUR PRESIDENT

MARION  
LUTHER  
BRITTAIN

The "Doc" as he is fondly called by the students is a true son of Georgia having devoted his life to the furthering of education in Georgia. During the twenty years that he has served as president of Georgia Tech, Dr. Brittain has won the esteem, admiration, and friendship of all who have been students under him.





WILLIAM

VERNON

SKILES



## DEAN

The Dean, to whom we all turn in our moments of despair, has impressed every one during his eighteen years of service by his fairness, willingness, and never failing understanding at all times.

# OFFICERS OF ADMINISTRATION

MARION LUTHER BRITTAIN, A.B., LL.D.  
President

WILLIAM VERNON SKILES, B.S., A.M., Sc.D.  
Dean

HUGH HARRIS CALDWELL, A.B.  
Registrar and Secretary of the Faculty

JOHN LAURENCE DANIEL, M.A.  
Dean of Graduate Courses

WILLIAM GILMER PERRY, A.M., Litt.D.  
Dean of General Studies

DOMENCIO PIETRO SAVANT, B.S. in E.E., M.S. in E.E., E.E.  
Dean of Engineering

FLOYD FIELD, A.B., A.M.  
Dean of Men

JAMES ERSKINE McDANIEL, B.A., LL.B.  
Director of Cooperative Department

PHIL BLASIER NARMORE, B.S. in Gen. Eng., Ph.D.  
Assistant to the Dean

FRED W. AJAX, B.A., M.A.  
Assistant to the Dean of Men

GERALD A. ROSSELOT, Ph.D.  
Director, State Experimental Station

ROBERT W. COLLINS, Colonel C.A.C.  
Commandant Military R. O. T. C.

J. V. BABCOCK, Captain U. S. Navy  
Commandant Naval R. O. T. C.

FRANK KING HOUSTON, C.P.A.  
Treasurer

ARTHUR HAMMOND ARMSTRONG, B.A., M.A.  
Superintendent of Dormitories

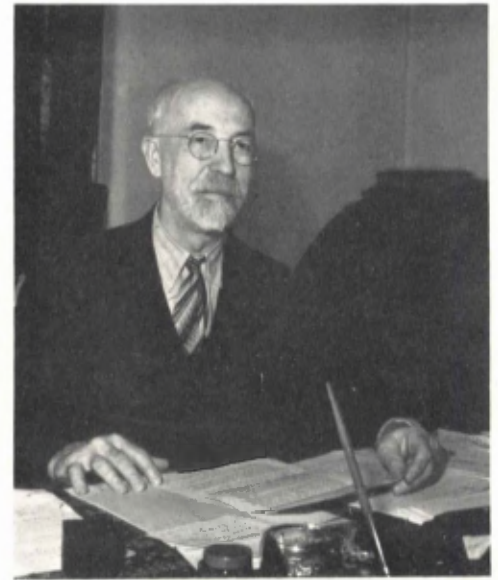
ROGER SHEPPARD HOWELL, B.S. in M.E., M.Sc.  
Director of Evening School of Applied Science

HOWARD WARD MASON, B.S. in M.E., M.E.  
Superintendent of Grounds and Buildings

ROY STEVENSON KING, M.E., M.Sc., Sc.D.  
Superintendent of Shops and Power Plant

ESTELLE ALLEN, E.C.S.  
Associate Registrar

HARRIET HENDERSON  
Secretary to the President



FIELD



CHAPIN





BUSH-BROWN



KNIGHT



WYCKOFF



MITCHELL

**DEPARTMENT OF AERONAUTICAL ENGINEERING**

MONTGOMERY KNIGHT . . . Professor and Head of the Department  
A. Y. POPE . . . Assistant Professor  
D. W. DUTTON . . . Assistant Professor

**SCHOOL OF ARCHITECTURAL ENGINEERING**

HAROLD BUSH-BROWN . . . Professor and Head of the Department  
J. H. GAILEY . . . Professor  
I. M. HEFFERNAN . . . Associate Professor  
R. T. MORENUS . . . Associate Professor  
M. L. JORGENSEN . . . Assistant Professor  
M. SIEGLER . . . Assistant Professor  
J. H. HARRIS . . . Instructor  
E. A. MOULTHROP . . . Instructor

**BIOLOGY DEPARTMENT**

H. A. WYCKOFF . . . Professor and Head of the Department  
S. H. HOPPER . . . Assistant Professor  
E. G. LOWER . . . Assistant Professor  
A. E. CANNON . . . Instructor

**THE SCHOOL OF CERAMIC ENGINEERING**

LANE MITCHELL . . . Professor and Head of the Department  
C. F. WYSONG . . . Assistant Professor  
J. H. HARRIS . . . Instructor

**DEPARTMENT OF CHEMICAL ENGINEERING**

J. W. MASON . . . Professor and Head of the Department  
PAUL WEBER . . . Associate Professor

# FACULTY

L. D. YATES . . . . . Assistant Professor  
 H. V. GRUBB . . . . . Instructor  
 R. N. MILLER . . . . . Instructor

## DEPARTMENT OF CHEMISTRY

JOHN L. DANIEL . . . . . Professor and Head of the Department  
 W. S. TAYLOR . . . . . Professor  
 B. B. WROTH . . . . . Professor  
 H. B. FRIEDMAN . . . . . Associate Professor  
 W. B. RICHARDSON . . . . . Assistant Professor  
 H. M. WADDLE . . . . . Assistant Professor  
 C. A. WELLS . . . . . Assistant Professor  
 W. C. WHITLEY . . . . . Assistant Professor  
 W. M. SPICER . . . . . Assistant Professor  
 W. H. BURROWS . . . . . Instructor  
 P. K. CALAWAY . . . . . Instructor  
 J. D. CLARY . . . . . Instructor  
 H. L. EDWARDS . . . . . Instructor  
 D. A. HUTCHINSON . . . . . Instructor  
 J. L. TAYLOR . . . . . Instructor  
 L. K. YOURTEE . . . . . Instructor

## DEPARTMENT OF CIVIL ENGINEERING

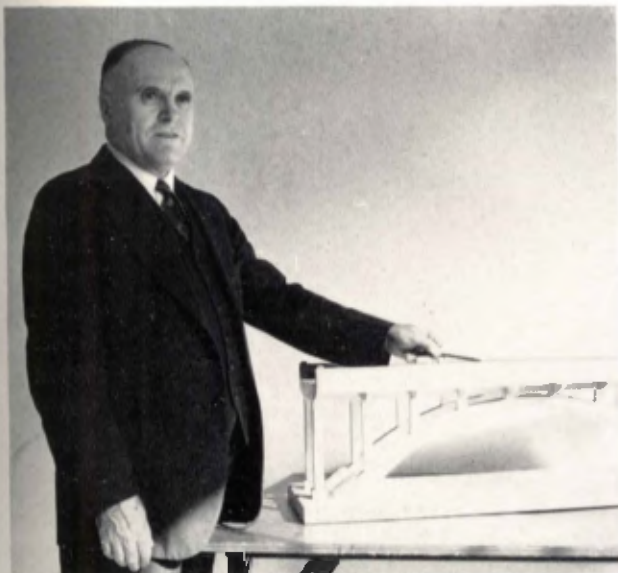
F. C. SNOW . . . . . Professor and Head of the Department  
 J. M. SMITH . . . . . Professor  
 R. P. BLACK . . . . . Associate Professor  
 J. H. LUCAS . . . . . Associate Professor  
 W. M. HONOUR . . . . . Instructor



DANIEL

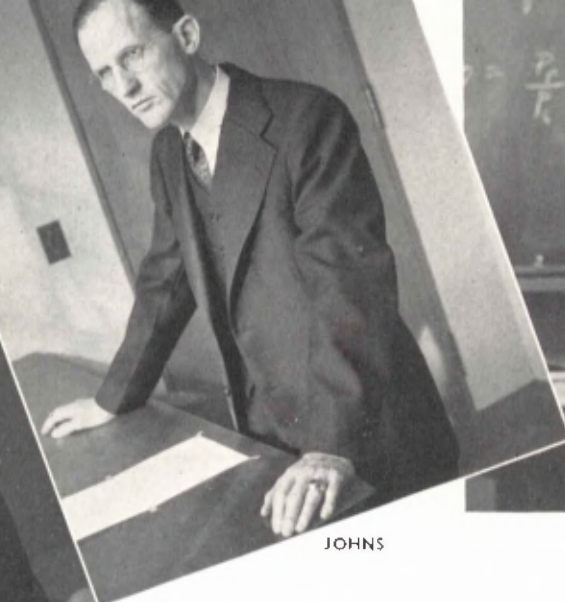


MASON





GIBSON



JOHNS



SAVANT



DENNISON

**DEPARTMENT OF ECONOMICS AND SOCIAL SCIENCE**

- H. E. DENNISON . . . . . Professor and Head of the Department
- A. H. ARMSTRONG . . . . . Associate Professor
- M. R. BREWSTER . . . . . Associate Professor
- M. A. STRICKLAND . . . . . Associate Professor
- N. WARREN . . . . . Associate Professor
- F. B. WENN . . . . . Associate Professor
- JOHN A. GRIFFIN . . . . . Assistant Professor
- W. J. PROCTOR . . . . . Assistant Professor
- J. C. BROWN . . . . . Instructor

**DEPARTMENT OF ELECTRICAL ENGINEERING**

- D. P. SAVANT . . . . . Professor and Dean of Engineering
- H. B. DULING . . . . . Professor
- T. G. SEIDELL . . . . . Professor
- C. H. HONNELL . . . . . Assistant Professor

- A. W. STALNAKER . . . . . Assistant Professor
- B. J. DASHER . . . . . Instructor
- S. R. SMITH . . . . . Instructor

**DEPARTMENT OF ENGINEERING DRAWING AND MECHANICS**

- W. B. JOHNS . . . . . Professor and Head of the Department
- H. S. WEBER . . . . . Professor
- P. B. NARMORE . . . . . Professor
- F. BOGLE . . . . . Assistant Professor
- B. L. BROWN . . . . . Assistant Professor
- F. M. HILL . . . . . Assistant Professor
- R. K. JACOBS . . . . . Assistant Professor
- J. C. DURDEN, JR. . . . . Instructor
- A. A. MAHOFF . . . . . Instructor
- W. B. RATTEREE . . . . . Instructor
- A. W. REGER . . . . . Instructor

**DEPARTMENT OF ENGLISH**

- W. G. PERRY . . . . . Professor and Head of the Department
- F. W. AJAX . . . . . Professor, Assistant Dean of Men  
and Assistant Director of Personnel Department
- L. W. CHAPIN . . . . . Professor and Acting Registrar
- E. H. FOLK . . . . . Professor
- G. W. RAINEY . . . . . Associate Professor
- A. J. WALKER . . . . . Associate Professor
- D. R. ANDERSON . . . . . Assistant Professor
- EWING ANDERSON . . . . . Assistant Professor
- HAL C. BROWN . . . . . Assistant Professor
- D. MITCHELL COX . . . . . Assistant Professor
- D. D. COMER . . . . . Instructor
- C. L. CRANE . . . . . Instructor
- W. P. HUDSON . . . . . Instructor
- R. H. LINTON . . . . . Instructor
- J. M. STEADMAN . . . . . Instructor
- PERRY D. WESTBROOK . . . . . Instructor
- G. H. WILSON . . . . . Instructor

**DEPARTMENT OF GEOLOGY**

- C. D. GIBSON . . . . . Professor and Head of the Department



SCHILTZ

**THE SCHOOL OF INDUSTRIAL DESIGN**

A. SCHILTZ . . . . . Associate Professor

**THE SCHOOL OF INDUSTRIAL EDUCATION**

T. H. QUIGLEY . . . . . Professor and Head of the Department  
 P. E. BABCOCK . . . . . Professor  
 J. H. GROVES . . . . . Assistant Professor  
 F. L. MORRISON . . . . . Assistant Professor

**DEPARTMENT OF MATHEMATICS**

D. M. SMITH . . . . . Professor and Head of the Department  
 FLOYD FIELD . . . . . Professor and Dean of Men  
 W. VERNON SKILES . . . . . Professor and Dean of the School  
 R. A. HEFNER . . . . . Professor  
 D. L. STAMY . . . . . Associate Professor  
 H. K. FULMER . . . . . Associate Professor  
 D. H. BALLOU . . . . . Assistant Professor  
 C. W. HOOK . . . . . Assistant Professor  
 R. MUNDORFF . . . . . Assistant Professor  
 A. L. STARRETT . . . . . Assistant Professor  
 F. H. STEEN . . . . . Assistant Professor  
 D. L. WEBB . . . . . Assistant Professor  
 C. W. BORNMANN . . . . . Instructor  
 C. L. CARROLL . . . . . Instructor  
 L. J. GREEN . . . . . Instructor  
 C. H. HOLTON . . . . . Instructor  
 R. C. LYNDON . . . . . Instructor  
 G. E. NICHOLSON . . . . . Instructor  
 L. B. WILLIAMS . . . . . Instructor

**THE SCHOOL OF MECHANICAL ENGINEERING**

R. S. KING . . . . . Professor and Head of the Department  
 W. V. DUNKIN . . . . . Professor  
 R. S. HOWELL . . . . . Professor  
 H. W. MASON . . . . . Professor  
 R. L. SWIEGERT . . . . . Professor  
 O. M. HARRELSON . . . . . Associate Professor  
 D. A. HOLLAND . . . . . Associate Professor  
 R. A. TROTTER . . . . . Associate Professor  
 W. A. HINTON . . . . . Assistant Professor  
 R. L. ALLEN . . . . . Instructor  
 G. E. BONNER . . . . . Instructor  
 J. E. DELK . . . . . Instructor  
 H. O. FOSTER . . . . . Instructor  
 K. H. HENLEY . . . . . Instructor  
 T. SHEAROUSE . . . . . Instructor



PERRY



DUNKIN



MODERN LANGUAGES

- J. B. CRENSHAW . . . . . Professor and Head of the Department
- M. G. BROWN . . . . . Associate Professor
- J. A. CAMPOAMOR . . . . . Associate Professor
- R. M. ERVIN . . . . . Associate Professor

DEPARTMENT OF PHYSICS

- J. H. HOWEY . . . . . Professor and Head of the Department
- J. B. EDWARDS . . . . . Professor
- N. S. HEROD . . . . . Professor
- E. E. BORTELL . . . . . Associate Professor
- J. E. BOYD . . . . . Associate Professor
- G. A. ROSSELOT . . . . . Associate Professor
- W. P. EWALT . . . . . Assistant Professor
- L. V. JOHNSON . . . . . Assistant Professor
- E. T. PROSSER . . . . . Assistant Professor
- H. B. SCARBOROUGH . . . . . Instructor
- G. F. WHEELER . . . . . Instructor
- S. E. WHITCOMB . . . . . Instructor

THE SCHOOL OF TEXTILE ENGINEERING

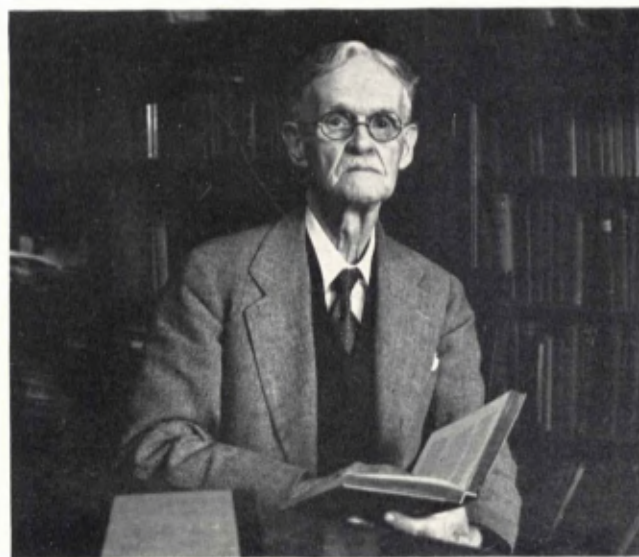
- C. A. JONES . . . . . Professor and Head of the Department
- R. L. HILL . . . . . Associate Professor
- W. L. CARMICHAEL . . . . . Assistant Professor
- J. R. BRANDON . . . . . Instructor
- B. W. BROWN . . . . . Instructor
- K. S. CAMPBELL . . . . . Instructor
- S. W. McCARTY . . . . . Instructor
- D. E. PHILPOT . . . . . Instructor



KING



HOWEY



CRENSHAW

JONES

