

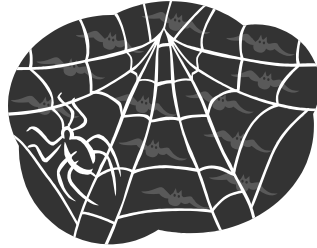
Fall  
2005



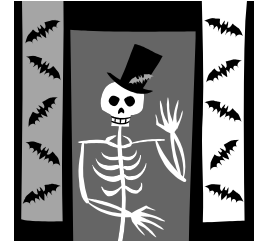
DEPARTMENT OF FACILITIES

# Facilities Quarterly

[www.facilities.gatch.edu/newsletters](http://www.facilities.gatch.edu/newsletters)



## Crime Scene



*The following is a true story. The names have been changed to protect identities.*

Kelly bought her first house two months ago. After living in rented apartments for the past ten years she was extremely excited and wasted no time moving in. Much to her dismay, she soon learned that what her parents told her time and time again was true. Owning a home was a never know what will go prepared. First it was a and even a stopped up bank account was rap-

### BADLY DECOMPOSING BODY

big responsibility and you wrong next. so always be leaky roof, then bad wiring, plumbing. It seemed like her idly depleting and she was beginning to think she'd



made a bad decision.

Time past, however, and things started to settle down with the new house. But then, several weeks after moving in, she started detecting a strange odor every time she went into the kitchen. It smelled like a decomposing body. So Kelly started wondering if the house was a crime scene where a person was killed and forgotten or what... Kelly searched and

### MEAN DOGS

searched all over, thinking it was the garbage disposal or possibly something in the trash. Everything she tried didn't seem to make the smell disappear. Not only that, but it was getting worse. She was able to smell the awful rotting stench inside the house and now outside. She didn't want to go in the crawl space fearing that she would find a badly decomposing body.

She was running out of ideas but then she remembered something the owner mentioned during closing. He told her that the previous owners had two large dogs that they'd kept in the backyard. Her neighbor mentioned that they were mean dogs and barked constantly and that one had died right before they'd sold the house.

Now, this house had a crawl space underneath, but seeing as it's dark and musty and very unwelcoming, she wasn't about to venture in. At night, when all the little nocturnal animals come out, and the house starts to settle and creak, all Kelly could wonder about while lying in bed was the old owner's dog, and where it might have been buried. As she thought about it more and more, she convinced herself that they'd tossed it into the crawl space and it was laying down there rotting.



Finally when Kelly thought she'd had enough, she got up the courage to find a

*(Continued on page 2)*

## Warren's Spotlight



Storms and hurricanes continue to be the big news for us over the past several months. The last newsletter edition focused on Cindy and Dennis. The last few months has been Katrina. Katrina gave us opportunities to demonstrate Georgia Tech's giving spirit by opening the Alexander Memorial Coliseum to the evacuees from Katrina as Red Cross shelter. Many of you were involved in turning our Coliseum, mainly known to us as the home for basketball teams, to a shelter and temporary home for evacuees from the devastation of Katrina. In addition to providing a place for evacuees to sleep, the shelter also provided three meals a day, free telephone service, free Internet service, and a multitude of social services to help the evacuees recover from Katrina.

We are losing a key member of our Facilities team. Jon Fraker is retiring after 30 years of service to the State

of Georgia. Jon has done an outstanding job on all the jobs he has done here in Facilities and we will miss him but wish him all the best as he enters into the next phase of his life.

Some folks have visited us from a company called Sightlines over the last few months. This company evaluates the performance of Facilities organizations throughout the country and compares them to one another in various categories. This type of comparison can be beneficial to us because it gives some ideas on how we are doing in comparison to others with comparative responsibilities. I will have more information to share with you after we get the final report.

Another interest is the changes we will be undergoing in Building Services. Over the last several months our Building Services organization has been working with a

consultant to help us look at the way we do things and how we can do things better. Included in what the consultant will be doing with us is providing us with a training program and work plan for all of our buildings. I see the results as being making a good operation even better.

Summer is over and we are in the midst of another school year. As I see you moving among all the students in doing our job, I am very proud of the job you all are doing in helping making Georgia Tech one of the very best institutions of higher learning in the world. We should never forget. The job each of us does help Georgia Tech maintain its well-earned reputation for excellences.

*(Continued from page 1)*

flashlight and open the crawlspace door. This wasn't going to be easy, but she had to find out if something was rotting underneath the house. Kelly scooted along around the perimeter of the house, running into the occasional spider web or being hit by a jumping cricket. After twenty minutes under the house, she gave up. The stench was still undiscovered and her frustration level only grew.

Since she'd been under the house in the sweltering heat of the summer, she was eager to get inside and cool down. She then remembered she had some left over ice cream in the spare freezer in the utility room. When she opened the door to the utility room, she gagged and instantly knew the source of the

rotten smell. The freezer had never been plugged in when she moved in, even though all the meat and frozen dinners were put inside. It took her several hours and many trips to the trashcan to finally clean out the meat and all the blood and juices that had leaked everywhere.

If you have ever had your freezer die, or had the power go out for an extended period of time, you can probably smell that same exact rotten meat smell that Kelly encountered when she opened the door. You might have even gagged after reading that last paragraph. The moral of the story is, make sure you inspect the crawlspace for dead animals before moving in, and always plug in your freezer or come Halloween, you'll be in for a pretty good trick!

## Facilities Quarterly

*Publisher/Editor*  
Bill Halabi

*Staff/Representatives*  
Jo Ann Pittman  
Dennis Price  
Michelle Short  
Taffie Maynard  
Neil Tarver  
Albert Williams

Many thanks go out to all those who assisted with the publication of this newsletter. We would not have the great things to publish without your help.

Please send any contributions for the newsletter to Bill Halabi.

**The newsletter is also available online**  
[www.facilities.gatech.edu/newsletters.ph](http://www.facilities.gatech.edu/newsletters.ph)

# Facilities' News

Our heartfelt condolences go out to **John Jackson** (Maintenance Worker II) for the loss of immediate family members over the past few years. His brother past suddenly in October. After 19 years of faithful service to Tech, **Willie Brown** felt the need to move on. We were honored with a visit from an old friend, **Ben Kolb**. Ben and Ronnie Zachary stopped by to say good bye to Willie and for some burgers (Willie's favorite.) They roasted Willie on his last day here. He will be truly missed. **Paul Gruendler** skipped his yearly trip to Chicago so he could help his church with Hurricane Katrina disaster relief efforts. If you're looking for good family fun on the weekends and evenings, there are many little league Football, Baseball, and Basketball games. Ask **Kelvin, Soloman, and Bubba** about their games. **Tonya and Wye** are excited about their trip to Amsterdam in November. **Gregg Prater** is enjoying his new Colorado 2005. **Larry Turner** has been busy with relatives from New Orleans. **Frank Tedders** had his 38th Anniversary in September. **Perry Dewberry** just came back from a month long service in the National Guard. He was assigned to military police duty in New Orleans. Area 2 had a "Good Bye" luncheon for **Talena**. She is going to work for Dekalb



Talena Given giving a speech.

County.

We would like to welcome back **Mike Castille** from a six-week foot surgery. Mike had a bone spur removed from his left foot before Labor Day. He's still limping a bit, however he plans to keep his best foot forward. **Johnny Roper** was bouncing back and forth to Florida,



Terry's mom with her new dog, Zorro.

just to keep up with the last tropical storm and hurricanes. He and his wife Barbara anticipate their next December cruise. Santa Claus in the West Indies sounds like a plan to me. **Mike Picklesimer's** been bow hunting without success so far, but his chances will increase when gun season opens. Kill it and Grill it! Melvin Jones is still enjoying his new ride. He likes everything except the advalorem tax! **William** has recently purchased a new Dell computer with high-speed dial up and he loves it even more than his truck. **Shirah** has taken a short vacation to this Florida coast. Beer, beaches, and bikes are on the daily agenda. **Terry Williams** purchased a puppy for his mother. It was bought from a notable dog breeder in Rutledge, Ga. Some fellow named **Whitehead**. The dog is expecting to grow a little bit bigger.

We want to welcome **Dale Donovan**, our new Superintendent. Welcome to **Allen Bryant**, our new Electrician III. Allen has 20 years of experience working on high voltage testing. Prior to that, he worked for MARTA at their high voltage service. Welcome to **John**, our Electrician II. He has 12 years of experience. He worked in a nuclear power plant and he has a lot of control experience. Welcome to **Curtis Burnett** who was reassigned from Area 4. Curtis is very excited about working with us. Also **Warren Jamerson** has been reassigned from the power plant to the steam shop. **Casey Charepoo** who has

been with us for a couple of months, is our Preventive Maintenance project Manager. He is mechanical engineer. Casey manages 24 service contracts such as switch yard, fire alarms, boiler maintenance, elevator service, and many others. He manages about 4,000 preventive maintenance work order that are performed by outside contractors. Casey came from Carter and associates where he managed the maintenance of buildings such as the Bell South Tower and Agnes Scott college. He also worked in the hotel industry.

Custodian I, **Patricia Barnett's** daughter Mia J. Barnett graduated from Fort Valley State college with a Bachelor of Science degree in Veterinary Science. She was also commissioned by the United Army as a Second Lieutenant On August 12, 2005. She will be beginning her military career at Fort Benning near Columbus Georgia. Patricia states that she is very proud of her daughter and her career choices.

The Fire Marshall (**Vic Rachael**) and the Fire Safety Specialist (**David Richmond**) have moved offices from 490 10th St to the Coliseum Annex. **Therrell Hall** has joined the EH&S department in the position of Hazardous Materials Specialist II. **Vanessa Keel** is finishing up a missionary trip to Nicaragua this week.

Congratulation to **Taffie** on her new granddaughter, Miss Zariah Latrice Maynard, second granddaughter.



(Continued on page 10)

Zariah Latrice

# Storm Preparedness



Now that hurricane season is almost over, winter storm season will be approaching. Many people don't think of winter storms as being as much of

**First aid kit, essential medications, battery-powered NOAA Weather radio, flashlight, extra batteries, canned food, manual can opener, and bottled water.**

a threat as hurricanes, but they can be just as inconvenient, damaging, and disastrous. Extended power outages that accompany a winter storm can be problematic because building/home heating is lost. Preparing for winter storms is similar to preparing for hurricanes; the significant difference is defending against the cold. The American Red Cross has helpful information on their website at [www.redcross.org/services/disaster](http://www.redcross.org/services/disaster).

## Disaster Kit:

First aid kit and essential medications, battery-powered NOAA Weather radio, flashlight, and extra batteries canned food and manual can opener, bottled water (at least one gallon of water per person per day to last at least 3 days plus an extra gallon or two for each pet).

Also include water purification tablets such as Katadyn Micropur tablets from camping supply stores or Clorox (only this name brand) bleach to use if the bottled water is used up. Warm clothing, including boots, mittens, and a hat.

**Warm clothing, including boots, mittens, and a hat.**

Be sure your car is winterized (virtually all modern cars maintained according to manufacturer specifications—see owner's manual—are already "winterized"). Also assemble a disaster kit for the car. Stay tuned for storm warnings by listening to the NOAA Weather radio, local radio, and TV for updated storm information.

NOAA uses specific terms to describe pending or existing winter storms.



**A winter storm WATCH means a winter storm is possible in your area.** If one is issued, stay tuned to your NOAA radio, local radio, and/or TV for updates. Also be alert to changing conditions and

**disaster kit for the car.**

avoid unnecessary travel.

**A winter storm WARNING means a winter storm is headed for your area.** Stay indoors but if you must go outside, dress warmly by layering clothing. Cover your

hands, head, and face. Walk carefully on snowy, icy sidewalks. Be very careful if you plan on shoveling snow. Avoid traveling by car in the storm. If you must...carry a disaster supply kit in your trunk and make sure your gas tank is full (this helps keep the fuel line from freezing.) It is very important to let someone know where you are going, your route, and your estimated time of arrival.

**A blizzard WARNING (though we rarely have these in Atlanta) means strong winds with blinding, wind-driven snow.** Dangerous wind chill conditions would be expected. Seek shelter immediately!

After the winter storm has passed, continue listening to the appropriate media outlet for updated information and guidelines. If neighbors require special assistance, those who are elderly or persons with disabilities, lend a helping hand. Avoid driving until conditions have improved. Follow forecasts and be prepared when venturing outside, especially since major storms can be followed by even colder conditions.

**Where is the watermelon on campus?**



# Facilities Profile

## Design & Construction

### 1. What are the responsibilities of the Design and Construction group? how is it organized?

Design & Construction is composed of four distinct groups, Architectural Services managed by Brad Satterfield, Engineering Services managed by Don Alexander, Construction Administration managed by Frank Lamia and Capital Projects managed by Tom Suermann. Facilities Design and Construction is responsible for providing architectural/engineering design services and project management of construction projects. Construction projects costing less than 1 million dollars are managed by the D&C Construction Administration group, and the Capital Projects group manages large Capital projects, exceeding 1 million dollars.

### 2. How many employees are there? 27

### 3. Who is in the department and what do they do ?

Engineering is comprised of 5 engineers, Don Alexander the manager, David Chandler & Brian Clark are electrical engineers and Sam Dahdah and Greg Spiro are mechanical engineers. Architectural Services have eight members, Brad Satterfield is the manager, architects and designers include Dave Bowman, Elvia Lam, Sheila Jackson, Steve Cseplo, Natasha Laughrun, Jim Larkin and Alicia Kelly. Construction Administration is managed by Frank Lamia, and is supported by Jim Hummel, Rayford Mills and John Giarnese. Capital Projects has a staff of 6 and 1 part time employee, Tom Suermann as manager, Fred Dolder, Gary Petherick, John DuConge', Gary Phillips and Ron LeRoy and Bill Miller is a part time employee.

### 4. What is a typical day like for an Engineer or an Architect in your department?

It varies depending on job responsibilities. Design architects and engineers spend much of the time in the office developing design and construction drawings for many of the Institute renovation projects. They provide estimates/budget recommendations and all of the architects and engineers have to work closely with their clients, from the different colleges, to assure the project requirements are defined and understood correctly as indicated in the drawings. The managers provide oversight as well as staff support, and spend much of their time dealing with consultants and clients. There is also related field inspection and review of documents prepared by consultants. Members of the Capital Projects group are assigned as project managers for the large Capital projects. Tom Superman's staff each has 1



Front L-R: Brad Satterfield, Don Alexander, Frank Lamia.  
Back L-R: Tom Suermann, Mike Patterson.

or 2 major projects assigned to them to manage both the design and project construction. Capital project assignments often last for three years or more years for one project. We all attend meetings required for project review and coordination of project requirements. There are also numerous meetings to keep the administration informed and up to date of the status and progress of projects. It is rare for any of our staff members to remain in their office for a complete day. We also are a resource for O&M as they are to D&C.

### 5. What is the hardest aspect of your job ?

Managing our time. We are involved in hundreds of projects a year, and project demands are constant, including client needs. Projects are not scheduled to meet our needs, requiring multi-tasking by D&C staff members in order to keep numerous project on schedule and projects moving forward. In addition, we work with schedules for almost all assignments, and managing time is the most difficult part of our work.

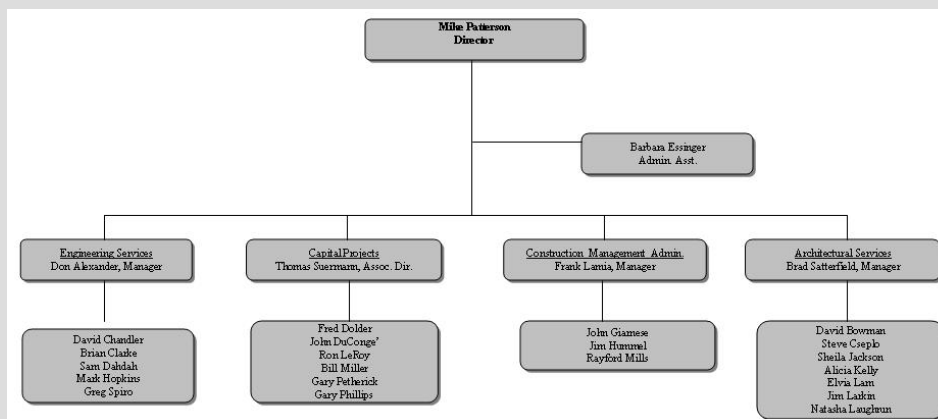
### 6. What do you like the most about your job?

The satisfaction of completing a project successfully, having a satisfied client, taking part in the ever changing campus environment, and working with people that take pride in their work.

### 7. Can you give us examples of some of the work that your department has been involved in?

There have been hundreds of small and large renovation projects that are not as visible as the new buildings, such as major laboratory

(Continued on page 11)



# Facilities' Employees



Xavier Simmon and Marques Isaac.



Front L to R: Linda, Maribel, Anna, Cynthia. Back L to R: Charlene, Mike, Willa, Myrilyn, Myles, and Ruby.



Eric enjoying the new lock shop location.



Stanley Goss.



Richard Messer is working hard!.



Clarence and Howard at their "Good Bye" party.



Casey Charepoo, PM Manager.



Cedric and Donny Loading pallets.



Zachary is presenting Bill the Golf trophy.



Gary and Herbert at the storeroom.



John Giarnese BEFORE & AFTER rafting .

# Facilities' Employees



Perry Dewberry Daryl Bowles sanding the rails outside IBB.



Tim Spears and William Alfaro.



Dale Donovan, Utility Superintendent.



Jon and Cindy.



Debbie Wolf Lopez performing the "Right To Know" annual training to the employees at Area 2.



Landscape crew off loading the pansies for Fall planting.



Jon giving his last speech at Tech.



Jon's employees at his retirement breakfast.



## Neil's Garden

Just because summer is gone and the flowers have faded and the trees are about to lose their leaves doesn't mean you have to stop gardening.

Fall is the appropriate time for planting trees, shrubs, fescue grass, and an interesting variety of spring bulbs and fall flowers.

Fall planting is good for shrubs and trees for many reasons. With the cooler temperatures the plants aren't stressed like they are when planted in the heat of late spring or summer. Fall planting will allow them to establish a root system before they go dormant in the winter. (Most trees and shrubs are dormant, or not growing, in the winter whether they're evergreen or deciduous.) The trees and shrubs grow healthier and sturdier when they leaf back out in the spring with a well established root system from the fall planting.

Fescue grass and other cool season grasses are best seeded in the fall, because the cool time of year is when they're actively growing. (In short cool season grasses stay green year round. Warm season grasses turn brown in the winter.) September and October are the best months to seed fescue and other cool season grasses.

Everybody knows and loves pansies, the most popular fall and winter annual flower. (Annuals are replanted every year, while perennials come back every year.) Other good fall annuals are snapdragons, dianthus, dusty miller, and ornamental greens such as kales and cabbages.

Spring flowering bulbs such as daffodils, and tulips should be planted now too. Bulbs need to be planted after the soil temperature has cooled to around 60 degrees, but before the first frost. Daffodils, also known as narcissus are

# On-the-Job Training Program (OJT) Through the GI Bill

Veterans eligible for the GI Bill may be able to receive benefits in the workplace. Some veterans may not be aware of this benefit. Facilities' employees such as HVAC technicians, electricians, plumbers who are veterans may be eligible. Here are the guidelines:

- Veterans must be eligible to receive GI Bill benefits
- Active Guard and Reserve may also be eligible
- Veterans must be **recently hired** (within one to two years), in an **entry-level** job, working **full-time**, and must be **supervised**
- Wages cannot include commission
- Employer may be private, local or state government
- Benefits range from \$216.00 to \$753.00 per month, tax-free, depending on eligibility

**For more information, Please contact the State Approving Agency at** (404) 463-0356 or Email: [saaga@mindspring.com](mailto:saaga@mindspring.com)  
Website <http://sdvs.georgia.gov>

## SPAM Quarantine Folder

Our anti-SPAM software places suspected SPAM in the Quarantine folder, which is a sub-folder under your Inbox folder. As part of your SPAM setup, three subfolder were created. They are SAPM—blacklist, SPAM - whitelist, and SPAM-blacklist.

**SPAM—blacklist:** place email from "bad" source there so that source will be blocked. Please do NOT move the SPAM messages into the blacklist folder, unless you receive multiple messages from the same sender. Having a blacklist folder full of SPAM messages reduces the responsiveness of the mail server for 2 reasons -- storing the mail reduces available storage space, and checking each inbound message against a long list of blacklisted senders significantly increases the workload on the email server processors.

**SPAM—whitelist:** If you have legitimate email in your Quarantine folder, please drag it into your Whitelist folder, to let the system know that future email from that sender should be placed in your Inbox.

**SPAM—quarantine:** You should review your Quarantine folder periodically to ensure legitimate email was not identified as suspected SPAM.

**You should also review your Quarantine folder periodically to delete the SPAM messages.** This reduces the amount of email stored on the server and may improve the responsiveness of the email server.

excellent bulbs for naturalizing in the landscape and once planted they'll return year after year. Tulips on the other hand usually don't sprout year after year in Georgia's climate and will need replanting. Plant bulbs as many inches deep as the bulb is long and 3 to 4 inches apart depending on it's width. For those who already enjoy gardening and those interested in starting you don't have to wait until next spring to get out there again.

## Dear Bill

**Q: When will the Flu shots be available at Tech and how much they cost?**

A: The Flu shots will be available for Tech employees November 1, 2005 and they will be ten Dollars.

**Q: What is the status of returning the vacation and sick leave information to our paycheck?**

A: It is not going to happen.

**Q: Is it true that we may stop getting a paycheck stubs?**

A: Yes.

**Q: When is the Holiday Luncheon this year and where it is going to be?**

A: The Holiday Luncheon will be on Thursday December 22, 2005. It will be held at Britain Dining Hall.

**Q: Is it true that Atlantic Drive will be closed soon?**

A: Yes. Atlantic Drive will eventually be for pedestrian only between Peachtree place and Ferst Drive.

**Q: When is the last day to make changes to our insurance policy?**

A: The last day is November 4, 2005. If you want to keep everything the same take no action (except for your flexible spending account.) You must make your changes through the web at:

**Techworks.gatech.edu**

[Please make your changes early]

**Q: How can retirees get a copy of this newsletter?**

A: They can get access current and previous copies on the web at: **www.facilities.gatech.edu/newsletters.php** Also, if they let Bill Halabi know, he will email it to them.

If you have a question, please email it to [bill.halabi@facilities@gatech.edu](mailto:bill.halabi@facilities@gatech.edu) or place the question in campus mail, Facilities /OM mail code 0350. Inquiries will be kept confidential.

## Where Are They Now?

Many employees came and went through the Facilities/Plant Operations/Physical Plant department. They spent a lot of time at work and work was a big part of their lives. We have many friends that left us that we would like to know their wear about. Below , we compiled a list of some of the employees who retired in the past decade. We asked each one of them four questions. Below, are the questions and the answers:

### Questions:

**A. What year did you retire ?**

**B. What do you remember most about Tech?**

**C. How are you spending your time?**

**D. What do you want to tell your co-workers?**

### Wylene Neill

- A. 2003.
- B. The people.
- C. keeping busy with classes, going to Miss to play slot machines, lunches and dinners with friends, working in my church and sleeping late.
- D. Retire as soon as you can, there is nothing like it.

### George Morgan

- A. March 2004.
- B. The first day coming and last day going. The first day the paint shop supervisor asked me if I wanted coffee. The last day, I remember that everyone came to say good bye and good luck.
- C. Enjoying myself doing whatever I want.
- D. Hang in there. You can reach the goal as I did and retire.

### J C Staton

- A. January 1995.
- B. Basically I remember that it is a good place to work.
- C. I spend my time bowling, playing Bingo, and going to Beloxi (before it was destroyed.)
- D. It was a joy working with most of



you. I enjoyed it all.

### Muhasibi Khayyam

- A. February 20003.
- B. The annual cook out. Especially the year when we had the hot pepper eating contest. I remember when Charlie Mann and Henry wades were in the contest.
- C. In the summer, I am working hard in my AC business. In the Fall and Spring, I am relaxing. I go back to Alabama where I have property on the lake. I catch Bass and Crapy. I have been on some cruises to Honduras, Mexico.
- D. While you are working, live below your means; otherwise you are going to starve to death when you retire.

### Charlie Chapman

- A. 2004.
- B. We worked together like a family.
- C. Traveling.
- D. NA.

### Adie McCourt

- A. 2004.
- B. The many people she worked with and the team spirit.
- C. Cooking, traveling, and visiting other churches with her choir.
- D. Come to work everyday, be on time, and respect authority.

### Mack Dennard

- A. 1994.
- B. The experience he gained and the wonderful people he worked with.
- C. Playing Golf.
- D. Be on time, stay on your assignment and keep your leaders informed.

## Jon Fraker Retires on December 1, 2005

### Give us a brief history of your of career at Tech:

I began working at Tech in January 1992. The former Director, Jim Priest, hired me to help prepare Facilities for the challenges of hosting the 1996 Olympic Games. We evaluated all departments within Facilities and determined that the primary focus would be the Building Services Department. For about three years I worked with all aspects of Building Services including training employees and purchasing tools and equipment. When Mr. Priest retired in early 1995, I served as the Acting Director of Facilities for approximately six months. When Chuck Rhode became the Director in late 1995, he assigned me the task of serving as the liaison between Tech and the Olympic Committee M & O staff. I helped coordinate all campus maintenance activities done for the Olympics.



Once the Olympic Games were over and the support activities were completed, I was assigned to manage the Facilities Customer Service group which included all work control technicians. Also, I was assigned various other activities including our communications and work control systems. When the decision was made to go to Zone Maintenance, I was assigned to assist with the transition. I was then hired as the Central Maintenance Manager to oversee the Lock shop, Motor pool, Staging and Storeroom operations.

In addition to these activities, I serve as the GT Fleet Coordinator and coordinate all activities regarding vehicles with DOAS. I also serve as the Facilities equipment inventory coordinator, the Right-To-Know coordinator for my departments and the Emergency Evacuation coordinator for our part of O'keefe.

### What was the most memorable moment at Tech?

Working with the Olympic games.

### What are you planning on doing?

I plan to take it easy until the first of the year. Then I'll have a part time job with the department of natural resources. I am going to count trees and fish.



Jon with his staff.



Jon took a picture with his co-worker. They are from left to right (top row first):

Garry Lockerman, Cindy Jackson, Mike Leasure, Tommy Little, Todd Bermann, Rodd Hineman, Ronnie Croy, Warren Page, Hyacinth, Ide, Irene Earl, Jon Fraker, and Bill Halabi.

(Continued from page 3)

She arrived October 4<sup>th</sup>, on day shy of her grandmother's birthday. She weighed 6 pounds 9 ounces and is 19 inches long. She is the daughter of Cedric and Sheena. Zones 1 and 5 tied for the Quarterly Customer Service Achievement Award. Both scored 97%. We are awaiting for the outcome of the tiebreaker. **Naomi Fields**, Zone 9 is the proud new mother of Robert Alexander. RAF arrived August 3<sup>rd</sup> and weighed 9

pounds 3 ounces and he is 21 inches long. **Barbara Walker**, Zone 2, is a grandmother for the first time. Her daughter Shanica is the proud mother of Da'Shon Monquez. Das'Shon was born October 5<sup>th</sup> and weighed in at 5 pounds 7 ounces and is 17 inches long. Condolences go out to **Reginald Barden** of Zone 6, his father Mr. David Hudson passed away. Alice Jackson's (zone 1) sister, Mrs. Charlotte Bass passed away recently. Irene Rouse 's (Zone 6) sister, Mrs. Lillie Cook passed

away.

Mrs. Dorothy Louise Sanders Who is retired from Tech, passed away on September 24, 2005. Dorothy, or "Miss Dot" as she was called by most of her co-workers worked for Building Services for the entire time. She was a very active employee serving on the Employee Relations Committee, Happy Hour Committees, and Picnic Committees and she served as the department's surrogate MOM. She is survived by a husband, one daughter and four sons.

# Christmas Charleston Breakfast Casserole

This is great to put together Christmas eve and just put in the oven on Christmas morning.

12 Slices Bacon (can use about 1 cup diced ham, or 1 pound sausage)  
 1/4 Cup butter, melted  
 3 Cups croutons  
 2 Cups grated cheddar cheese  
 6 eggs  
 1 3/4 c milk  
 1 bell pepper (any color) diced  
 1 tablespoon prepared mustard  
 salt and pepper to taste

Place bacon in a large deep skillet. Cook over medium high heat until evenly brown. Drain, crumble, and set

aside.

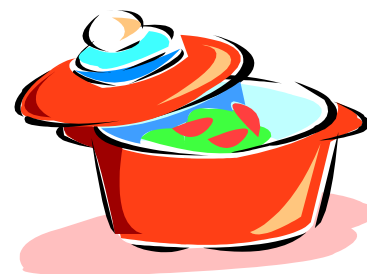
Preheat oven to 325 degrees. It takes about 45 minutes.

Melt butter in microwave, or in small pan on the stove over low heat. Spray a 11x17 inch baking dish with vegetable spray.

Place croutons in the bottom of the dish and drizzle with melted butter. Sprinkle with grated cheese.

Crack the eggs into a bowl, whisking to break up the yolks. Add milk, peppers, mustard, salt and pepper and beat until well-combined. Pour over the

croutons and cheese and sprinkle with crumbled bacon.



Bake in the preheated oven for 40 minutes. Remove from oven and allow to stand 10 minutes before serving.

(Provided by: Delora Felix, Area V)

(Continued from page 5)

renovations accomplished in Bunker Henry in support of research, exterior projects such as changing of the "Hill" from a vehicular area to a pedestrian only place, and the 5th Street Corridor projects which just transformed 5th Street from Tec way to Fowler. Renovating historical buildings bring a great deal of satisfaction for all involved, projects such as the J.S. Coon and the Swann building renovations, numerous student housing renovation projects both on the east and west campus. And of course the most visible results of our work are the Capital Projects. We work with the clients and selected design firms in developing the building design and manage the constructing from start to finish. Examples of recent projects include the Bio-Technology Campus projects, which include IBB, ES&T, BME and the MS&E building which is under construction at this time. Recent projects include the Campus Recreation Center, Student Health Center, Student Commons, Technology Square, Food Processing Laboratory building located at the North Avenue Research area, and the Klaus Advanced Computing Building. Presently we are involved in the design of the Nanotechnology Research Center Building, NRCB, to be constructed on the present site of the ERB on Ferst between Atlantic and State Streets. I've been at Tech for almost 8 years and the changes to the GT pus have been phenomenal, with more to come. I would be remiss in not thanking the many GT offices that assist and support our effort to accomplish the design and construction of all of the projects for which we are involved, especially Operations and Maintenance.

## Construction Update

Project	Completion
Armstrong Residence Hall	Jul 06
Fifth st Bridge / Park	Nov 06
Klauss Advance Computing Building	Apr 06
Business Continuity Data Center	Apr 06
Molecular Science & Engineering	Summer 06
New Electrical Substation	Oct 07
Nanotechnology Research Center	TBD
Utilities Relocation at NRCB	Mar 06
Neely Source Removal	Dec 05
Neely Abatement & Demolition	Jun06
NARA Master Plan Update	NA
NARA North Perimeter Security Fence & GLC Landscape	Nov 05
NARA Infrastructure (electrical)	Apr 05
NARA Infrastructure (civil)	Sep 05
NARA Infrastructure (ele)	Nov 05
NARA Landscape phase 3 (FPTB)	Sep 05
NARA Strong St Gatehouse	Feb 06
NARA East Tech Way Improvements	Oct 05
NARA Site Development (Neetrac site Improvement and Fence)	TBD



**Molecular Science and Engineering Building**  
 Due to open in the Fall of 2006.



**Klauss Advance Computing Building** due to open in the Spring of 2006.

# Accolades

Rodd,

As you may know, on Sat, Aug 27, we had a partial failure of the A/C system in the NW section of our floor in the Love bldg. **Mr. Jeff Bridges** was apparently on call and came over very quickly (within 30 minutes or so) after we notified GT Police. Mr. Bridges figured out what the problem was (an unexplained shut down of the system), and went on to fix it very efficiently and professionally. The A/C system was up and running before he left the building and that helped us bring back on line an important computer systems.

I would like to take this opportunity to thank Mr. Bridges and your entire operation for a job well-done!

Regards,  
Ari Glezer.  
Mr. Warren Page

I want to thank you for replacing the partitions in the college of Architecture's restrooms. The old partitions were in very poor condition. The new ones are more functional and make the restrooms

look much nicer and cleaner.

All of us here at the college of Architecture sincerely appreciate all that you and the personnel in Zone 3 do to support us in keeping our buildings up to Georgia Tech's standards.

Sincerely,

Thomas D. Galloway  
Dean and Professor

I really appreciate the extra energy, effort and time all of you put into making the Stamp's visit to the Student Center a success. The ballroom ( and lobby) looked FANTASTIC. Daniel was on top of it when I arrived just after 7:00am, I understand that Gwen and her crew were hard at work the evening before and I know Antonio's team had a hand in it as well

Thank You - your contributions made all the difference.  
Thank You!  
Kim

Rodd,

I wanted to thank you for letting the guys spend part of this week putting

the flags up. John Jackson, Albert Williams, and Alan Raville did a great job and were great to work with. Hope you come see the building soon, the flags look great.

Alice West



**ICHABOD Crane was spotted at the M building construction site.**

## Comedy Corner

- A guy is driving down the street. A cop pulls him over and says, "Sir, were you aware that your wife fell out of the car about a mile back?" The guy says, "Oh, thank God! I thought I went deaf."
- A skeleton walks into a bar and says, "Gimme a beer and a mop."
- How do crazy people go through the forest? They take the psychopath
- What do prisoners use to call each other? Cell phones.
- What do you call Santa's helpers? Subordinate Clauses
- What do you get from a pampered cow? Spoiled milk.
- What do you get when you cross a snowman with a vampire? Frostbite
- What lies at the bottom of the

ocean and twitches?  
A nervous wreck

