



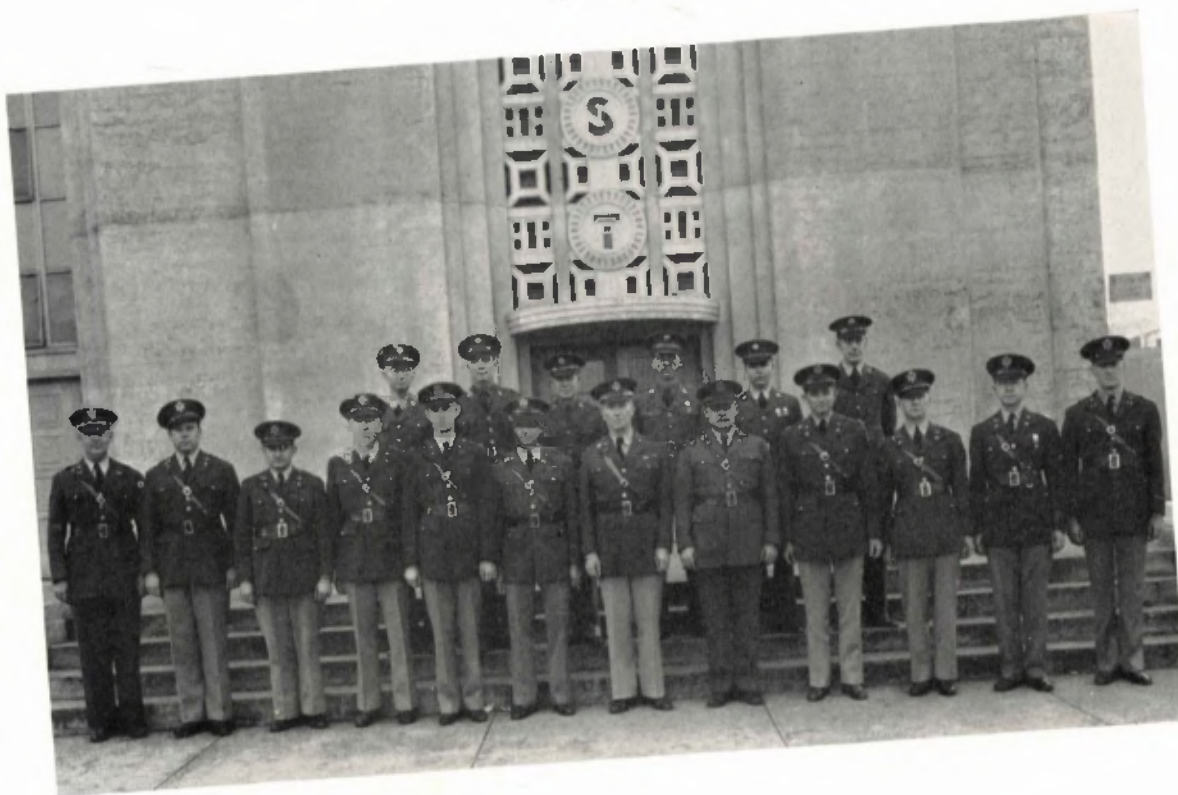
MILITARY



MILITARY SCIENCE AND TACTICS

COLONEL R. W. COLLINS, P. M. S. & T. and Commandant

LIEUT. COL. G. S. BROWNELL	CAPT. M. H. FLOYD
LIEUT. F. E. LINNELL	CAPT. G. J. GEISLER
LIEUT. COL. J. B. DAY	CAPT. O. S. QUIGLEY
MAJOR R. L. WATKINS	MAJOR W. E. TIDMORE
CAPT. R. B. ALFORD	CAPT. D. B. WEIR
CAPT. L. W. deJARNETTE	CAPT. R. A. VAN HOUTEN



Front row, left to right: FLOYD, ALFORD, GEISLER, deJARNETTE, WATKINS, BROWNELL, COLLINS, DAY, TIDMORE, QUIGLEY, WEIR, VAN HOUTEN. . . . Back row: COCHRAN, PARCHMAN, ELLIS, PATRICK, SIMS, RIEL.



On the Drill Field

REGIMENTAL STAFF



MOODY



MISS GIPSON



MISS WHALEY



EDWARDS

COL. J. E. EDWARDS Regimental Commander

Sponsor for Col. Edwards

MISS DOROTHY WHALEY

LIEUT. COL. W. F. MOODY Executive

Sponsor for Lt. Col. Moody

MISS EMILY GIPSON

CAPT. E. BERNARDO Adjutant

Sponsor for Capt. Bernardo

MISS LORELLE JOHNSON

CAPT. J. O. THORNTON Supply

CAPT. R. F. CHOQUETTE Plans and Training

Sponsor for Capt. Choquette

MISS MARY ANNE HENDERSON

MASTER SERGEANT V. R. WIDERQUIST

MASTER SERGEANT G. R. IRWIN



BERNARDO
MISS HENDERSON

MISS JOHNSON
CHOQUETTE

THORNTON



FIRST BATTALION STAFF



EDLEBLUT



MISS SEAGLE



WADE
JOHNSTON

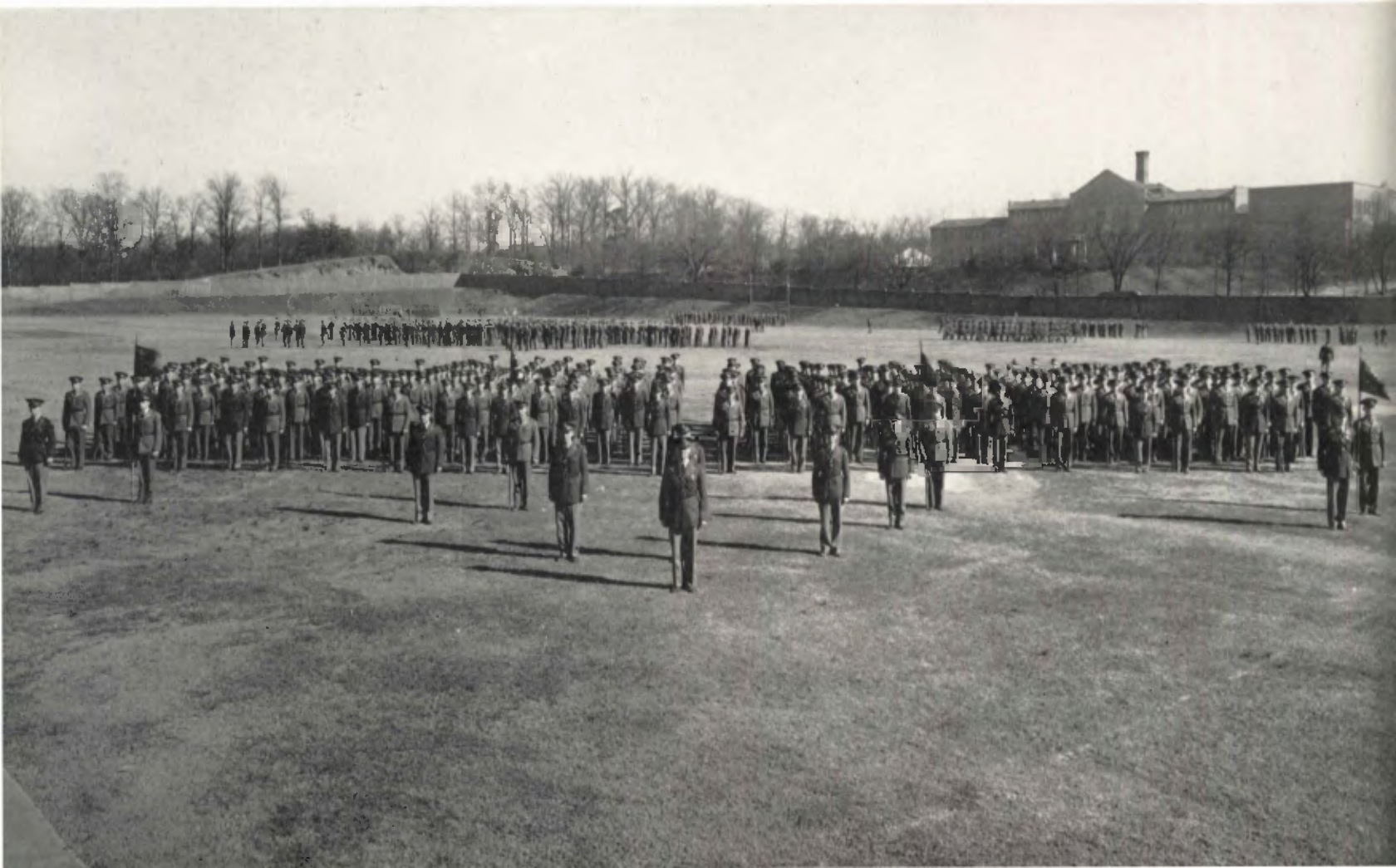
MISS MORGAN
MISS CHEVES

MAJOR C. M. EDELBLUT Battalion Commander
Sponsor for Major Edelblut
MISS MARY JAMES SEAGLE

CAPT. A. L. WADE Battalion Adjutant
Sponsor for Capt. Wade
MISS MARGARET ELIZABETH MORGAN

CAPT. D. F. JOHNSTON Battalion Plans and Training
Sponsor for Capt. Johnston
MISS DOT CHEVES

H. B. ASHE Battalion Sergeant Major



COMPANY A

CAPT. W. H. COOPER Company Commander
 Sponsor for Capt. Cooper
 MISS DOROTHY WEATHERS

B. F. BOTTENFIELD First Lieutenant
 G. L. SOUTHER First Lieutenant
 E. S. LOVE Second Lieutenant
 J. P. HITE Second Lieutenant
 R. S. SCHWARCZ Second Lieutenant



MISS WEATHERS



COOPER



BOTTENFIELD

SOUTHER

LOVE

HITE

SCHWARCZ

SERGEANTS

H. B. TATUM J. M. WOMACK
 R. W. NEY J. G. KEARNEY
 J. W. BIER F. L. WATSON

COMPANY B

CAPT. W. W. JORDAN Company Commander
 Sponsor for Capt. Jordan
 MISS LORAIN STRINGER

M. H. WHITE First Lieutenant
 G. W. STRADTMAN First Lieutenant
 R. E. COLLIER Second Lieutenant
 J. E. CHAMBERS Second Lieutenant
 H. G. MAYO Second Lieutenant



MISS STRINGER



JORDAN



WHITE

STRADTMAN

COLLIER

CHAMBERS

MAYO

SERGEANTS

D. A. CROSBY W. D. FRANCIS
 M. C. PIPPEN P. H. COSBY
 S. R. GRANBERRY

COMPANY C

CAPTAIN F. W. EVANS Company Commander
 Sponsor for Captain Evans
 MISS BETTY HURT

J. E. BROADWELL First Lieutenant
 W. H. REEVES First Lieutenant
 R. J. HANNER Second Lieutenant
 A. F. LeBLANC Second Lieutenant
 A. C. ISAACS Second Lieutenant



MISS HURT



EVANS



BROADWELL

REEVES

HANNER

LeBLANC

ISAACS

SERGEANTS

J. V. BENATOR M. W. ARMSTRONG
 R. W. SHELDON C. B. LeCRAW
 F. MITCHELL S. M. BERMAN
 R. A. PLASTER

COMPANY D

CAPTAIN W. R. SEAY Company Commander
 Sponsor for Captain Seay
 MISS BETTY ANN LILLY

E. K. OVERSTREET First Lieutenant
 J. B. TRENHOLM First Lieutenant
 J. T. BELL, JR. Second Lieutenant
 A. N. KAPLAN Second Lieutenant
 J. W. GRIFFETH Second Lieutenant



MISS LILLY



SEAY



OVERSTREET

TRENHOLM

BELL

KAPLAN

GRIFFETH

SERGEANTS

T. J. KELLEY J. C. ROGERS
 H. L. EDGE J. H. FULLER
 S. N. HODGES J. B. HAMMACK
 J. H. WALLIS

SECOND BATTALION STAFF



EMMONS



MRS. EMMONS



- MAJOR M. A. EMMONS Battalion Commander
Sponsor for Major Emmons
MRS. M. A. EMMONS
- CAPTAIN C. E. BENNETT Battalion Plans and Training
Sponsor for Captain Bennett
MRS. C. E. BENNETT
- CAPTAIN C. E. HAMMETT Adjutant
Sponsor for Captain Hammett
MRS. C. E. HAMMETT
- CAPTAIN L. W. CAFFEY Commander Training Cadre
Sponsor for Captain Caffey
MISS VIRGINIA LEE BROWN
- SERGEANT M. F. THOMPSON Battalion Sergeant Major

FIRST ROW, LEFT TO RIGHT: BENNETT, MRS. BENNETT. SECOND ROW: HAMMETT, MRS. HAMMETT. THIRD ROW: CAFFEY, MISS BROWN.





BARFIELD



MISS FISKE

BATTERY E

CAPTAIN H. P. BARFIELD Battery Commander
Sponsor for Captain Barfield
MISS HARRIET FISKE

D. P. HAMILTON First Lieutenant
B. MASTERTON Second Lieutenant
H. EINSTEIN Second Lieutenant
D. T. ALLEN Second Lieutenant

SERGEANTS

J. P. ADAMS
J. D. RAULERSON
D. M. EDWARDS
T. S. BURTON
W. H. AVERY
R. M. THIBADEAU



HAMILTON MASTERTON EINSTEIN ALLEN

BATTERY F

CAPTAIN W. W. HOLT Battery Commander
Sponsor for Captain Holt
MISS CLARA MAY OBERST

R. K. PROTHRO First Lieutenant
O. C. LEE Second Lieutenant
C. E. BELCHER Second Lieutenant
J. F. THOMPSON Second Lieutenant
J. B. EWALD Second Lieutenant
C. T. McGRAW Second Lieutenant



HOLT



MISS OBERST

SERGEANTS

W. O. GARRETT R. BAROUCH
R. L. KRIEGER D. R. JOHNSON
J. P. ELLINGTON R. E. JONES



PROTHRO LEE BELCHER EWALD THOMPSON MCGRAW

BATTERY G

CAPTAIN F. W. STOPINSKI Battery Commander
 Sponsor for Captain Stopinski
 MISS MARTHA ARANT

A. R. DEAS First Lieutenant
 C. E. TURNER Second Lieutenant
 H. M. McNEILL Second Lieutenant
 D. P. WHITESIDE Second Lieutenant



MISS ARANT



STOPINSKI



DEAS

TURNER

McNEILL

WHITESIDE

SERGEANTS

F. H. McRAE
 A. P. FELTON
 C. N. JOHNS

G. W. BURGE
 F. W. DENNINGTON
 S. H. SCULNICK

BATTERY H

CAPTAIN W. D. CROMARTIE Battery Commander
 Sponsor for Captain Cromartie
 MISS MILDRED JONES

T. C. KARNES First Lieutenant
 E. G. MULLING First Lieutenant
 W. G. WANNAMAKER First Lieutenant
 F. F. BLAIR Second Lieutenant
 E. T. MITCHELL Second Lieutenant



MISS JONES



CROMARTIE



KARNES

MULLING

WANNAMAKER

BLAIR

MITCHELL

SERGEANTS

C. A. McLEOD
 J. A. SUDDETH
 A. ZAGARELLA

D. R. NEWMAN
 R. H. JOHNS
 S. J. HENRY

THIRD BATTALION STAFF



DRISCOLL



MISS MORRELL

MAJOR S. P. DRISCOLL Battalion Commander
Sponsor for Major Driscoll
MISS KATHERINE DRANE MORRELL

CAPTAIN H. H. BARTON Battalion Adjutant
Sponsor for Captain Barton
MISS PAULINE ROSS

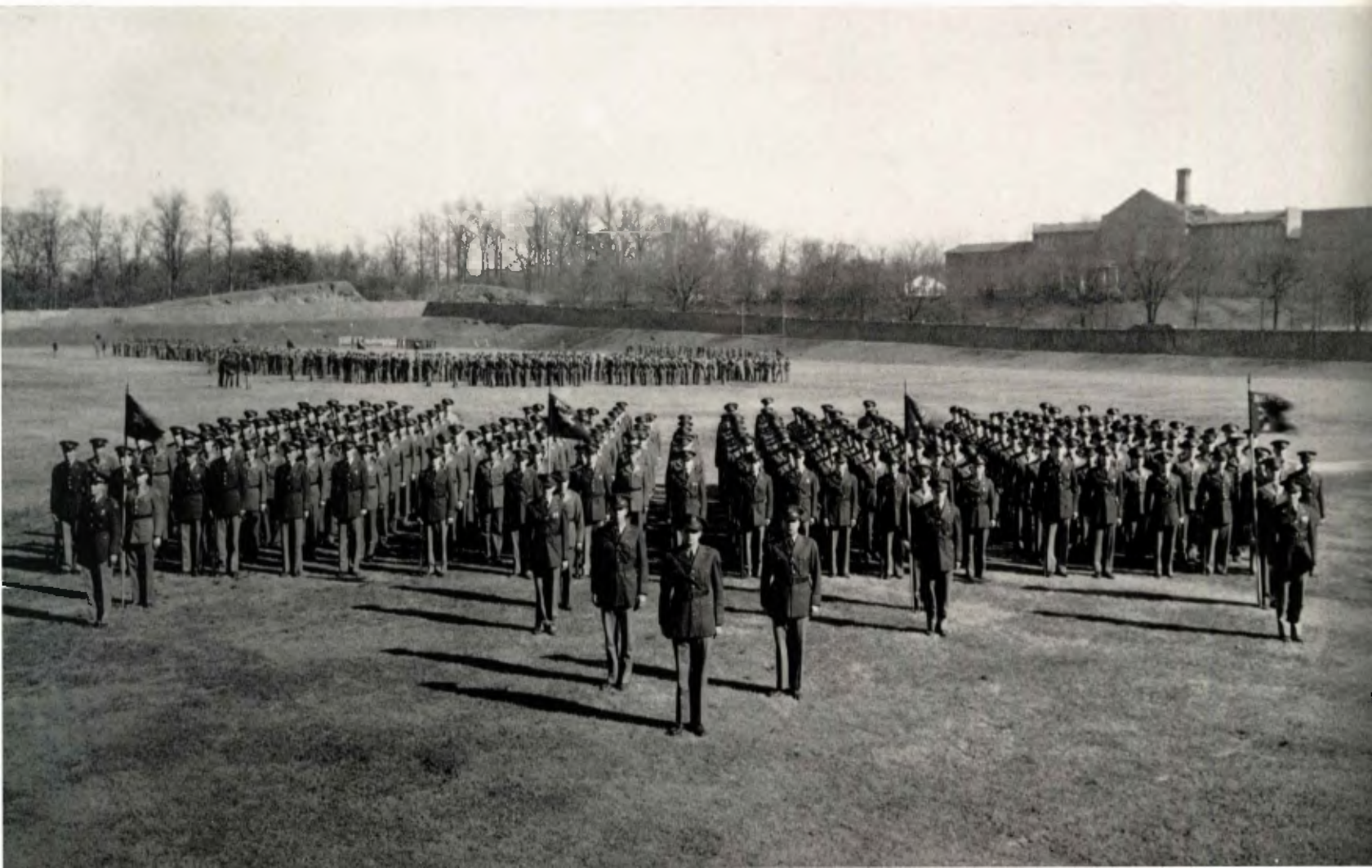
CAPTAIN C. D. HANELINE Battalion Plans and Training
Sponsor for Captain Haneline
MISS JANE EDWARDS

SERGEANT F. W. ROSE Battalion Sergeant Major



BARTON
HANELINE

MISS ROSS
MISS EDWARDS



BATTERY I

CAPTAIN E. F. SCOTT Battery Commander
 Sponsor for Captain Scott
 MISS DOROTHY ARNALL

J. S. LEEDY First Lieutenant
 J. W. RIGDON First Lieutenant
 J. P. STURROCK Second Lieutenant
 T. HILL Second Lieutenant
 E. E. STOTT Second Lieutenant



MISS ARNALL



SCOTT



LEEDY

RIGDON

STURROCK

HILL

STOTT

SERGEANTS

H. S. BELL W. L. BAKER
 J. R. ALLEN P. M. PLATZMAN
 A. T. FERNANDEZ P. L. BLACKSHEAR
 G. W. SMITH

BATTERY K

CAPTAIN W. A. COLEMAN Battery Commander
 Sponsor for Captain Coleman
 MISS MARY LOUISE PALMOUR

H. I. JENKINS First Lieutenant
 S. A. HAMILTON, JR. First Lieutenant
 F. T. BRIDGES Second Lieutenant
 G. S. MITCHELL Second Lieutenant



MISS PALMOUR



COLEMAN



JENKINS

HAMILTON

BRIDGES

MITCHELL

SERGEANTS

G. A. WILSON D. M. METZGER
 R. W. FEAGLES R. F. ROGERS
 G. T. SARGENT J. E. SCHOTT
 J. S. FORNARA

BATTERY L



DAVIS



MISS OWENS

CAPTAIN E. B. DAVIS Battery Commander
Sponsor for Captain Davis
MISS CARLEEN OWENS

F. L. WALKER First Lieutenant
J. O. KING Second Lieutenant
T. R. VANDEN-HEUVEL Second Lieutenant
A. C. MARTIN Second Lieutenant

SERGEANTS

F. P. MILLER	A. R. NADEAU
J. H. RILEY	W. C. LANKFORD
K. K. SMITH	L. I. BAWER
W. M. KEMP	



WALKER

KING

VANDEN-HEUVEL

MARTIN

BATTERY M



KORYCINSKI



MISS WRAZEN

CAPTAIN P. F. KORYCINSKI Battery Commander
Sponsor for Captain Korycinski
MISS JANE WRAZEN

G. P. OLCOTT, III First Lieutenant
E. McNENNEY Second Lieutenant
J. C. CHAPMAN Second Lieutenant
C. D. KELSO, JR. Second Lieutenant
R. S. KEMPTON Second Lieutenant
A. C. LOW Second Lieutenant

SERGEANTS

J. J. REBESKE	E. P. OWEN
E. J. SCHREIBER	F. B. SHEETZ
R. J. FRY	R. G. ALDERMAN
H. H. JOYNER	



McNENNEY

CHAPMAN

KELSO

KEMPTON

LOW



GUNN



MISS MARTHA PATTERSON

FOURTH BATTALION STAFF

MAJOR F. A. GUNN Battalion Commander

Sponsor for Major Gunn

MISS MARTHA PATTERSON

CAPTAIN C. P. SCHLESINGER, JR. Battalion Adjutant

Sponsor for Captain Schlesinger

MISS DON STOUGHTON

CAPTAIN W. D. FULTON, Battalion Plans and Training

SERGEANT G. H. CHILDERS, Battalion Sergeant Major



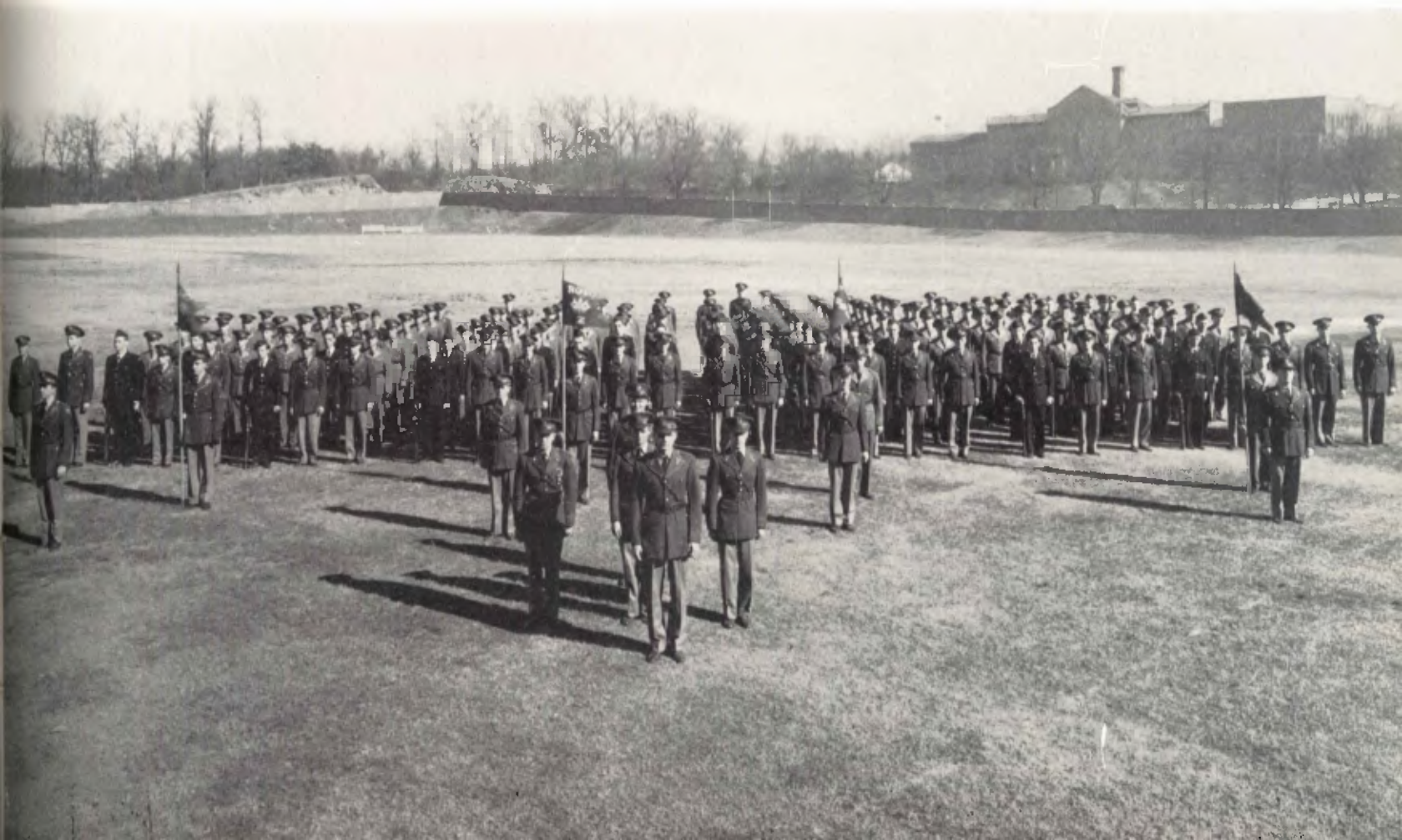
SCHLESINGER



MISS DON STOUGHTON



FULTON



SIGNAL I

CAPTAIN C. L. PEACOCK Company Commander
 Sponsor for Captain Peacock
 MISS TOMMAY TURNER

B. O'NEAL First Lieutenant
 R. G. OGLESBY First Lieutenant
 S. E. LAWRENCE Second Lieutenant
 Q. P. GEIGER Second Lieutenant
 G. C. TAYLOR Second Lieutenant



MISS TURNER



PEACOCK



O'NEAL

OGLESBY

LAWRENCE

GEIGER

TAYLOR

SERGEANTS

M. C. DAVIE D. F. CAPEHART
 T. M. JONES J. A. WILLIAMS

SIGNAL II

CAPTAIN P. B. BAILEY Company Commander
 Sponsor for Captain Bailey
 MISS RUTH PITTARD

F. L. SHERAM First Lieutenant
 H. M. GARNER First Lieutenant
 H. M. HICKS, JR. Second Lieutenant
 R. A. MARTIN Second Lieutenant
 R. M. DeSHON Second Lieutenant



MISS PITTARD



BAILEY



SHERAM

GARNER

HICKS

MARTIN

DeSHON

SERGEANTS

T. M. FUTRELL R. L. RHINEHART
 N. F. KING C. F. SHEARER, JR.

ORDNANCE III

CAPTAIN L. H. TRAYLOR Company Commander

Sponsor for Captain Traylor

MISS ELIZABETH CUNNINGHAM

J. R. MOORE First Lieutenant

C. T. MURRAY First Lieutenant



MISS CUNNINGHAM



TRAYLOR



MOORE

MURRAY

SERGEANTS

C. F. DuTEIL
R. E. RHODE
E. H. SHAW

C. D. COX
W. H. FUNK
R. S. WATERMAN

W. P. CULTER

ORDNANCE IV

CAPTAIN J. S. HORNSTEIN Company Commander

Sponsor for Captain Hornstein

MISS MARGARET BURTON

G. M. CALHOUN First Lieutenant

D. W. DOUGHTY First Lieutenant

R. PATTERSON Second Lieutenant



MISS BURTON



HORNSTEIN



CALHOUN

DOUGHTY

PATTERSON

SERGEANTS

B. M. INGRAM
M. E. TARLETON

E. F. CURRY
F. D. RICHARDS

E. A. MOORE

FIRST ORDNANCE MAINTENANCE



D'AMICO

MISS COMOLLIE



GUILL

HINTON

CAPTAIN E. A. D'AMICO
Company Commander
Sponsor for Captain D'Amico
MISS ANNE COMOLLIE

G. P. GUILL
First Lieutenant

C. V. HINTON
First Lieutenant

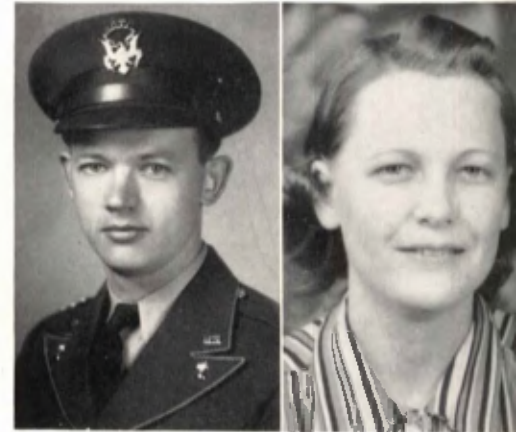


BEAUMARIAGE
COBB
KOEBLEY

HARDISON
HAEFELE
OWEN

QUILLIAN
HANSEN
PEEPLES

SECOND ORDNANCE MAINTENANCE



TATE

MISS DOCKERY

CAPTAIN R. C. TATE Company Commander
Sponsor for Captain Tate
MISS CALLIE DOCKERY

G. N. BEAUMARIAGE, JR. First Lieutenant
J. W. HARDISON First Lieutenant
J. W. QUILLIAN First Lieutenant
C. A. COBB Second Lieutenant
C. J. HAEFELE Second Lieutenant
R. M. HANSEN Second Lieutenant
A. V. KOEBLEY Second Lieutenant
S. C. OWEN Second Lieutenant
J. R. PEEPLES Second Lieutenant

DIVISION SIGNAL COMPANY

CAPTAIN W. C. GREENE . . . Co. Commander
Sponsor for Captain Greene
MRS. W. C. GREENE

W. R. DEAL First Lieutenant



GREENE

MRS. GREENE



DEAL

FIFTH BATTALION STAFF



READ



MISS MONROE



BRINSON
MILLER

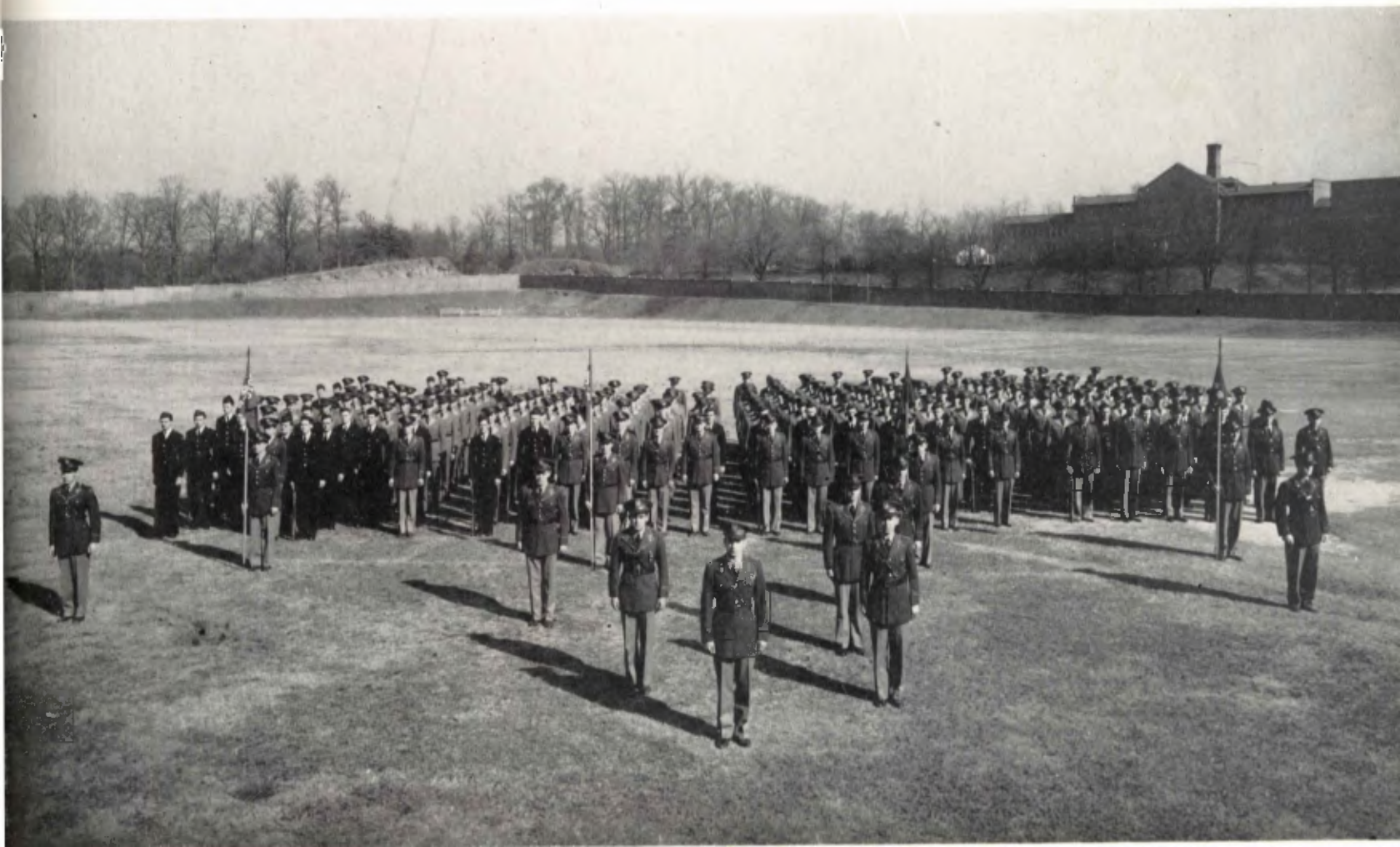
MISS LYON
MISS GILBERT

MAJOR C. B. READ Battalion Commander
Sponsor for Major Read
MISS AUDREY MONROE

CAPTAIN R. S. BRINSON Battalion Adjutant
Sponsor for Captain Brinson
MISS FRANCES LYON

CAPTAIN G. E. MILLER Battalion Plans and Training
Sponsor for Captain Miller
MISS MARTHA GILBERT

SERGEANT J. T. GRAHAM Battalion Sergeant Major





ELLINGTON



MISS BROWN

SIGNAL V

CAPTAIN J. E. ELLINGTON Company Commander
Sponsor for Captain Ellington
MISS MARY BROWN

J. M. de MONTMOLLIN First Lieutenant
H. G. EVANS First Lieutenant
W. B. HENDERSON Second Lieutenant
J. E. JOHNSON Second Lieutenant

SERGEANTS

H. H. ARMSTRONG W. L. LEMON
H. M. MOORE B. E. DUNAWAY
W. H. CAMP J. H. TAYLOR



DE MONTMOLLIN EVANS HENDERSON JOHNSON



SCHENCK



MRS. SCHENCK

SIGNAL VI

CAPTAIN E. L. SCHENCK Company Commander
Sponsor for Captain Schenck
MRS. E. L. SCHENCK

T. K. McKAMY First Lieutenant
G. A. BUSBEE First Lieutenant
G. B. HOSS Second Lieutenant
W. E. BECK Second Lieutenant

SERGEANTS

J. R. FULMER J. M. LAZENBY
J. E. SPENCER M. A. ELLIOT
J. L. VAN NESS C. W. WOODRUFF



McKAMY BUSBEE HOSS BECK

ORDNANCE VII

CAPTAIN H. S. JORDAN Company Commander
 Sponsor for Captain Jordan
 MRS. AUDREY JORDAN

- B. W. HASKELL First Lieutenant
- L. D. DAVIS First Lieutenant
- M. G. BILLIAS Second Lieutenant
- D. E. WILLIS Second Lieutenant
- E. A. SMITH Second Lieutenant



MRS. JORDAN



JORDAN



HASKELL

DAVIS

BILLIAS

WILLIS

SMITH

SERGEANTS

- | | |
|------------------|---------------|
| T. S. TOPOLNICKI | J. W. DAVIE |
| R. C. HOCK | O. D. WHIDDEN |
| B. C. BOSWELL | J. E. LAUEN |
| M. K. SHENKAN | J. M. PITTARD |

ORDNANCE VIII

CAPTAIN R. E. DOOLEY Company Commander
 Sponsor for Captain Dooley
 MRS. R. E. DOOLEY

- C. W. WRIGHT First Lieutenant
- R. E. GARST First Lieutenant
- R. F. GRIFFITH Second Lieutenant
- H. T. GAYMON Second Lieutenant
- E. S. VOORHIES Second Lieutenant



MRS. DOOLEY



DOOLEY



WRIGHT

GARST

GRIFFITH

GAYMON

VOORHIES

SERGEANTS

- | | |
|-----------------|--------------|
| T. J. INNES | A. B. ADAMS |
| S. J. TROMBETTA | A. M. CHENEY |
| R. E. BUCK | E. D. GRAY |
| E. K. WILLIAMS | |



The Officers: SCOTT, ARTHUR, EDWARDS, CHOQUETTE.

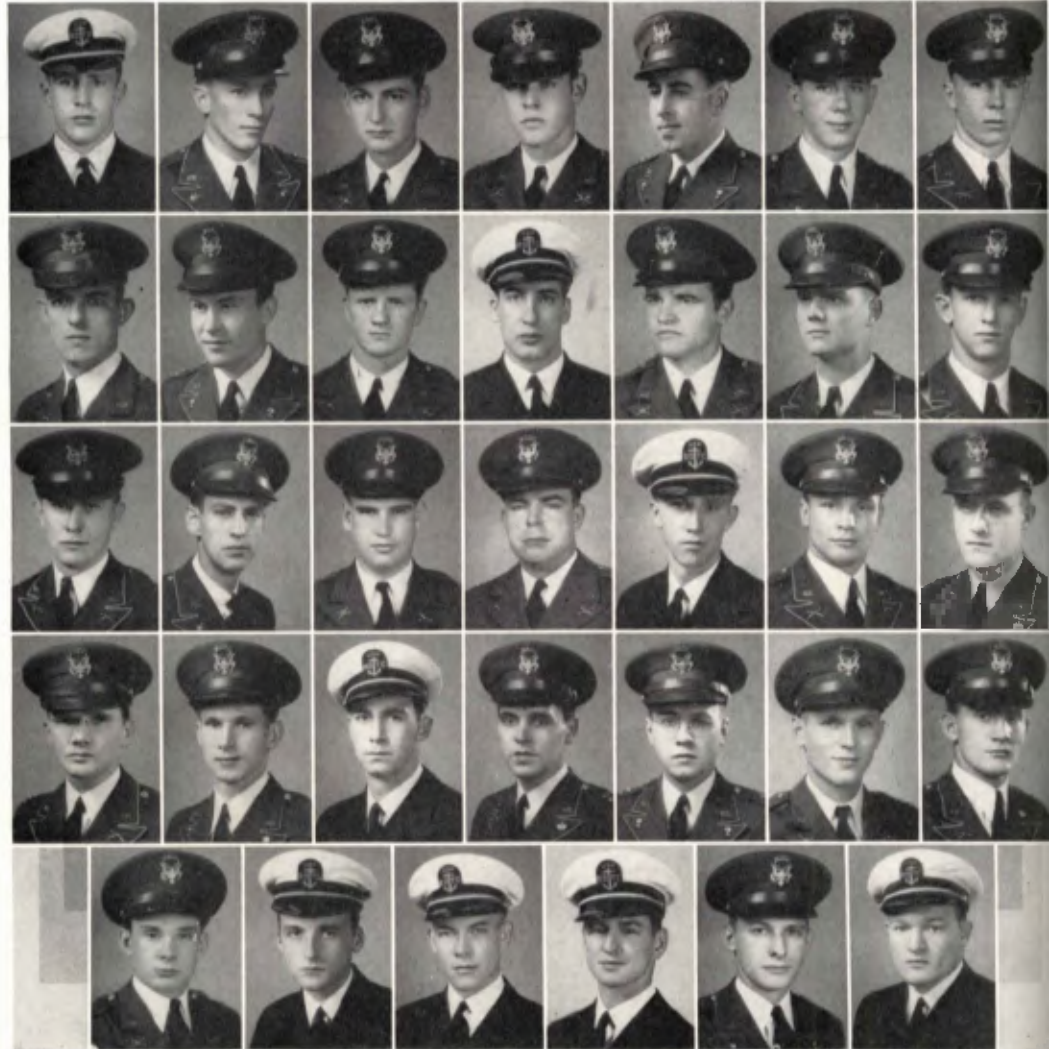
SCABBARD AND BLADE

OFFICERS

- E. F. SCOTT Captain
 H. B. ARTHUR First Lieutenant
 J. E. EDWARDS Second Lieutenant
 R. F. CHOQUETTE First Sergeant

MEMBERS

- | | |
|-----------------|-------------------|
| H. B. ARTHUR | C. D. HANELINE |
| P. B. BAILEY | J. U. HORTON |
| C. E. BENNETT | W. W. JORDAN |
| L. W. CAFFEY | W. F. MOODY |
| R. F. CHOQUETTE | E. K. OVERSTREET |
| W. A. COLEMAN | C. B. READ |
| W. H. COOPER | C. R. SANDERS |
| W. D. CROMARTIE | E. L. SCHENCK |
| E. A. D'AMICO | C. P. SCHLESINGER |
| E. B. DAVIS | E. F. SCOTT |
| E. W. DeJON | W. R. SEAY |
| S. P. DRISCOLL | F. W. STOPINSKI |
| C. M. EDLEBLUT | F. A. TAYLOR |
| J. E. EDWARDS | R. J. TRAMMELL |
| F. W. EVANS | R. W. WHITLOCK |
| W. C. GREENE | C. W. WRIGHT |
| C. E. HAMMETT | J. E. WRIGHT |



Reviewing the Battalion.



First row, left to right: ARTHUR, BAILEY, BENNETT, CAFFEY, CHOQUETTE, COLEMAN, COOPER. . . . Second row: CROMARTIE, D'AMICO, DAVIS, DEJON, DRISCOLL, EDLEBLUT, EDWARDS. . . . Third row: EVANS, GREENE, HAMMETT, HANELINE, HORTON, JORDON, MOODY. . . . Fourth row: OVERSTREET, READ, SANDERS, SCHENCK, SCHLESINGER, SCOTT, SEAY. . . . Fifth row: STOPINSKI, TAYLOR, TRAMMELL, WHITLOCK, C. W. WRIGHT, J. E. WRIGHT.

SECOND LIEUTENANTS CLUB



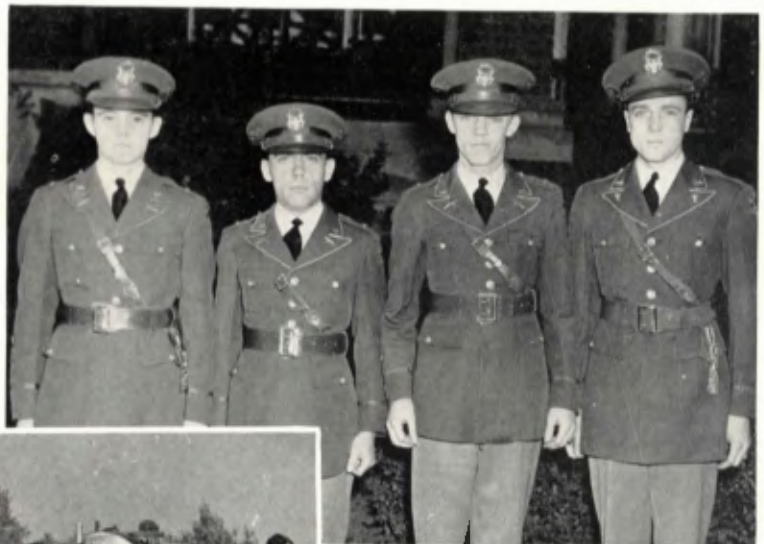
MEMBERS

- | | |
|-------------------|----------------|
| D. T. ALLEN | R. J. HANNER |
| G. M. BEAUMARIAGE | J. P. HITE |
| J. T. BELL | A. N. KAPLAN |
| M. G. BILLIAS | R. S. KEMPTON |
| F. F. BLAIR | A. F. LE BLANC |
| J. E. CHAMBERS | E. S. LOVE |
| J. C. CHAPMAN | B. MASTERTON |
| C. A. COBB | H. G. MAYO |
| R. E. COLLIER | J. R. PEEPLES |
| J. B. EWALD | R. S. SCHWARCZ |
| J. W. GRIFFETH | |

First row, left to right: ALLEN, BEAUMARIAGE, BELL, BILLIAS, BLAIR. . . . Second row: CHAMBERS, CHAPMAN, COBB, COLLIER, EWALD. . . . Third row: GRIFFETH, HANNER, HITE, KAPLAN, KEMPTON. . . . Fourth row: LE BLANC, LOVE, MASTERTON, MAYO, PEEPLES, SCHWARCZ.

OFFICERS

- | | |
|-----------------------------|----------------|
| B. MASTERTON | President |
| A. N. KAPLAN | Vice-President |
| J. E. CHAMBERS | Secretary |
| G. M. BEAUMARIAGE | Treasurer |



The Officers: BEAUMARIAGE, MASTERTON, CHAMBERS, and KAPLAN. Working on the 155.

NAVAL R. O. T. C.

CAPTAIN J. V. BABCOCK
P. N. S. & T. and Commandant

F. M. ADAMS Lieutenant Commander
G. C. GRIFFIN Lieutenant Commander
R. J. ARCHER Lieutenant
P. D. ELLIS Lieutenant
H. H. STROZIER Lieutenant



CAPTAIN BABCOCK



MUNDORFF

STROZIER

ARCHER

BABCOCK

THOMPSON

GRIFFIN

ELLIS



HOWARD

SIMS

WALLACE

FICKES

CRISWELL

BATES

SIXTH BATTALION STAFF

CADET LIEUT. COMDR. R. W. WHITLOCK Battalion Commander
 Sponsor for Lieut. Comdr. Whitlock, Miss Laura Lanier

CADET LIEUT. E. H. EDWARDS Battalion Sub Commander
 Sponsor for Lieut. Edwards, Miss Helen Hamill

CADET LIEUT. (j. g.) C. W. KILPATRICK Battalion Adjutant
 Sponsor for Lieut. Kilpatrick, Miss Patsy Fahrney

CADET ENSIGN J. E. WRIGHT Battalion
 CADET C. P. O. H. C. HARRISON Battalion C. P. O.



WHITLOCK



MISS LANIER



EDWARDS
KILPATRICK



MISS HAMILL
MISS FAHRNEY



MASSEY
CLEVELAND



RANSOM
EAGER



WRIGHT
HARRISON



THE COLOR GUARD

CADET 1ST P. O. G. W. MASSEY
 First Petty Officer

CADET 2D P. O. E. M. RANSOM
 Second Petty Officer

CADET 3D P. O. G. P. CLEVELAND
 Third Petty Officer

CADET 4TH P. O. G. B. EAGER
 Fourth Petty Officer



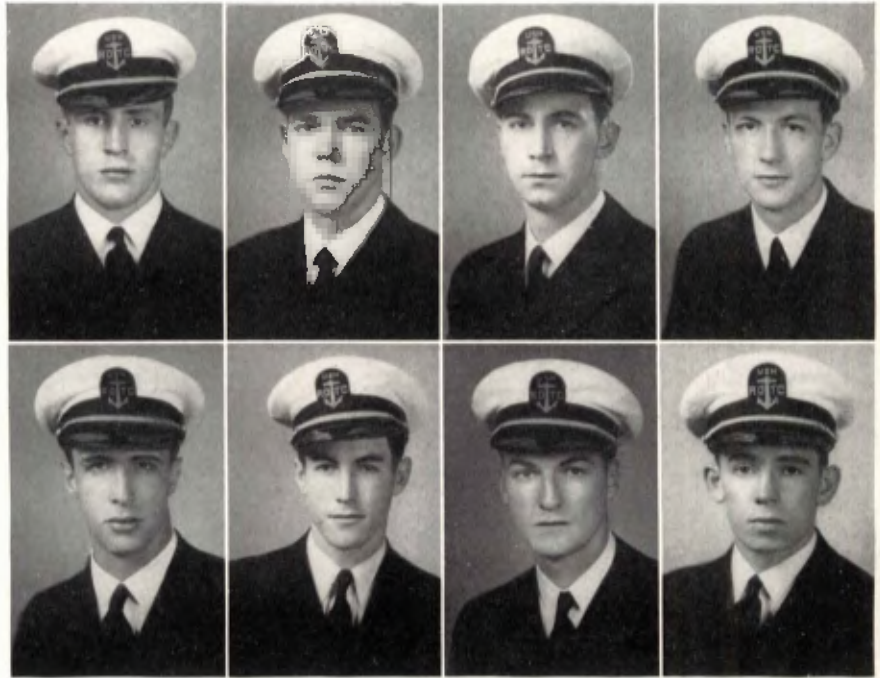
DeJON

MISS RAY

"A" COMPANY

CADET LIEUT. E. W. DeJON . . . Company Commander
 Sponsor for Lieutenant DeJon
 MISS BETTIE RAY

CADET LIEUT. (j.g.) H. B. ARTHUR . . . Comdr. 1st Plat.
 CADET ENSIGN J. T. ANDREWS . . . Comdr. 2d Plat.
 CADET C. P. O. C. R. SANDERS . . . Company C. P. O.
 CADET P. O. IC W. H. HERMES . . . Must. P. O. 1st Plat.
 CADET P. O. 2C G. A. ROBERTSON . . . Must. P. O. 2d Plat.
 CADET P. O. 3C M. A. CLEMENS . . . Guide, 1st Plat.
 CADET P. O. 3C J. H. HEUBECK . . . Guide, 2d Plat.
 CADET P. O. 2C J. L. COCHRAN . . . Guidon Bearer



First row, left to right: ARTHUR, ANDREWS, SANDERS, HERMES. . . .
 Second row: ROBERTSON, CLEMENS, HEUBECK, COCHRAN.



JUNIORS

ARNOLD, L. H.
 AYRES, M. J.
 CLINE, J. L.
 CODDING, L. E.
 CONLEY, J. O.
 DUNN, M. R.
 HODGE, F. C.
 LOGAN, W. W.
 MARSHALL, J. A.
 McLENDON, S. C.
 MURPHY, N. B.
 THARPE, J. B.
 WATLEY, W.
 WILSON, A. B.
 WINKLEMAN, V.

"B" COMPANY

CADET LIEUT. J. U. HORTON . Company Commander
Sponsor for Lieutenant Horton
MISS MARION MERTS



HORTON



MISS MERTS



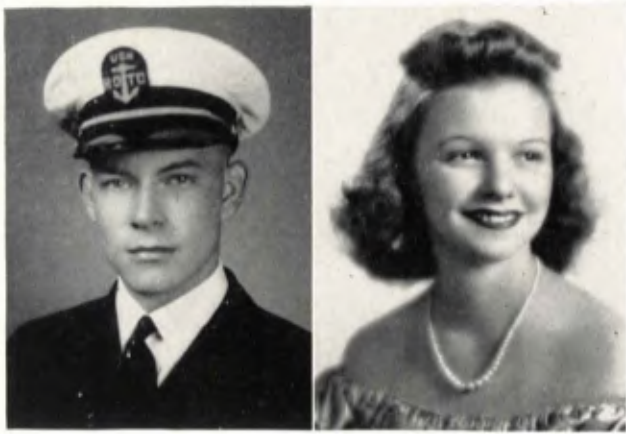
First row, left to right: KNEISEL, KIRKLAND, SIMPSON, BUSH.
Second row: ANDERSON, HAIGLER, SPREEN, BRISTOL.

CADET LIEUT. (j.g.) J. F. KNEISEL . . . Comdr. 1st Plat.
CADET ENSIGN J. E. KIRKLAND . . . Comdr. 2d Plat.
CADET C. P. O. W. M. SIMPSON . . . Company C. P. O.
CADET P. O. IC R. M. BUSH . . . Must. P. O. 1st Plat.
CADET P. O. 2C H. C. ANDERSON . Must. P. O. 2d Plat.
CADET P. O. 3C W. C. HAIGLER . . . Guide, 1st Plat.
CADET P. O. 3C R. W. SPREEN . . . Guide, 2d Plat.
CADET P. O. 2C F. M. BRISTOL . . . Guidon Bearer

JUNIORS

BLOUNT, G. C.
COWAN, R. L.
DODD, R. O.
DRAPER, N. C.
ENGRAM, R. C.
FEAGLE, J. A.
GOFORTH, R. W.
HANCOCK, J. C.
HERB, H. W.
HOLMES, W. H.
PARKS, R. A.
PORTER, J. T.
PRITCHETT, J. H.
STOVALL, F. A.
TURNER, R. G.
WOODARD, W. K.





TRAMMELL

MISS BRASWELL

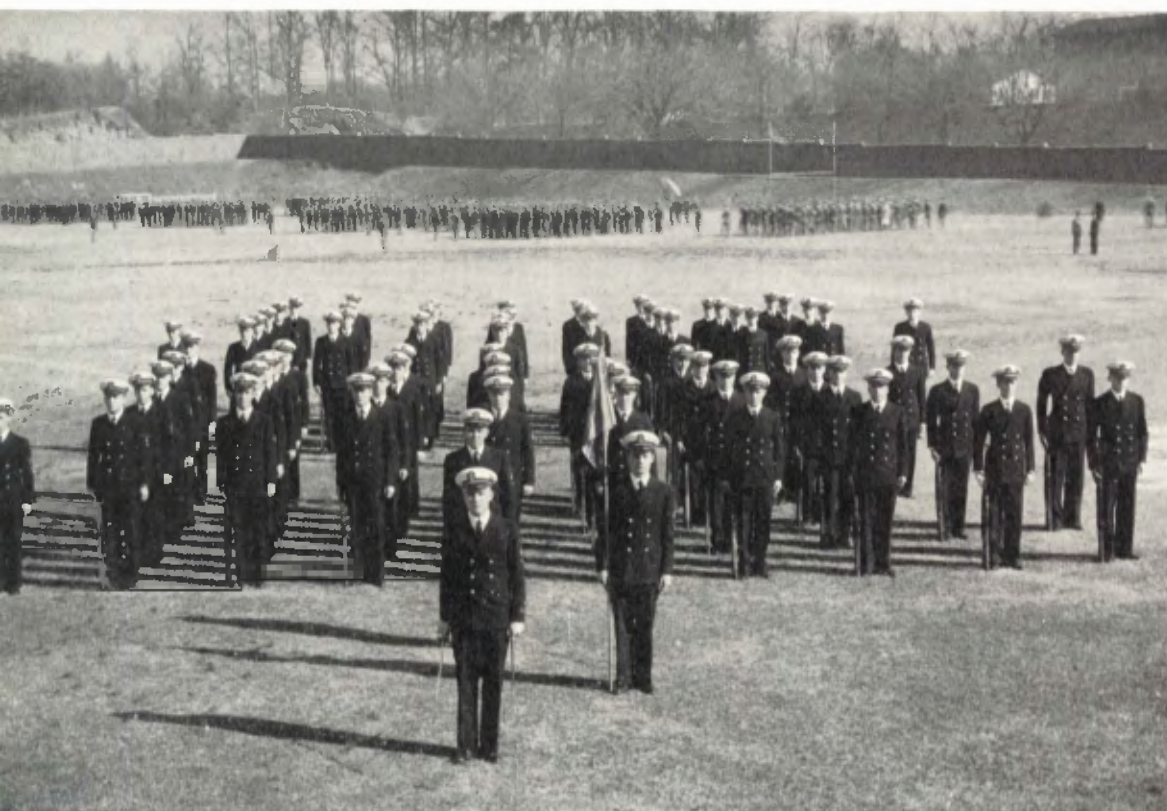
"C" COMPANY

CADET LIEUT. R. J. TRAMMELL, Company Commander
 Sponsor for Lieutenant Trammell
 MISS BEVERLY BRASWELL

- CADET LIEUT. (j.g.) F. C. CHENEY . . . Comdr. 1st Plat.
- CADET ENSIGN R. J. SANDERS . . . Comdr. 2d Plat.
- CADET C. P. O. F. A. TAYLOR . . . Company C. P. O.
- CADET P. O. IC T. E. BRIDGES . . . Must. P. O. 1st Plat.
- CADET P. O. 2C R. E. BECHT . . . Must. P. O. 2d Plat.
- CADET P. O. 3C J. Q. EDWARDS . . . Guide, 1st Plat.
- CADET P. O. 3C J. W. ADAMS . . . Guide, 2d Plat.
- CADET P. O. 2C W. J. GRACE . . . Guidon Bearer



First row, left to right: CHENEY, SANDERS, TAYLOR, BRIDGES. . .
 Second row: BECHT, EDWARDS, ADAMS, GRACE.



JUNIORS

- AIZPURU, J.
- BETHUNE, J. L.
- CORRY, J.
- EPSTEN, S. H.
- GRAHAM, F. A.
- JEFFERIES, J. S.
- MATSON, A. G.
- MAXWELL, R. M.
- McKENZIE, F. E.
- MORRIS, G. W.
- MUIR, R. C.
- NEILL, R. D.
- POLLARD, W. R.
- PUCKETT, C. C.
- VAN VOORHEES, E. B.
- WALL, R. E.
- WOLCOTT, B. H.



First row, left to right: ADAMS, AIZPURU, ANDERSON, ANDREWS, BLOUNT, BRISTOL. . . . Second row: BUSH, CORRY, DeJON, DUNN, EDWARDS, E. H., EDWARDS, J. O. . . . Third row: FEAGLE, GOFORTH, HARRISON, HORTON, KIRKLAND, KNEISEL. . . . Fourth row: MUIR, NORTHUP, PRITCHETT, PUCKETT, SANDERS, TAYLOR. . . . Fifth row: THARPE, TRAMMELL, WHITLOCK, WILSON, WINKLEMAN, WOODARD, WRIGHT.

MEMBERS

- J. W. ADAMS
- J. AIZPURU
- H. C. ANDERSON
- J. T. ANDREWS
- G. C. BLOUNT
- F. M. BRISTOL
- R. M. BUSH
- J. CORRY
- E. W. DE JON
- M. R. DUNN
- E. H. EDWARDS
- J. O. EDWARDS
- F. A. FEAGLE
- R. GOFORTH
- H. C. HARRISON
- J. U. HORTON
- J. E. KIRKLAND
- J. F. KNEISEL
- R. C. MUIR
- W. H. NORTHUP
- J. H. PRITCHETT
- C. C. PUCKETT
- R. J. SANDERS
- F. A. TAYLOR
- J. B. THARPE
- R. J. TRAMMELL
- R. W. WHITLOCK
- A. R. WILSON
- V. WINKLEMAN
- W. K. WOODARD
- J. E. WRIGHT

NAVIGATORS CLUB

OFFICERS

- R. W. WHITLOCK President
- F. M. BRISTOL Vice-President
- C. W. KILPATRICK Secretary
- J. B. THARPE Treasurer

The Officers: KILPATRICK, BRISTOL, WHITLOCK, and THARPE.

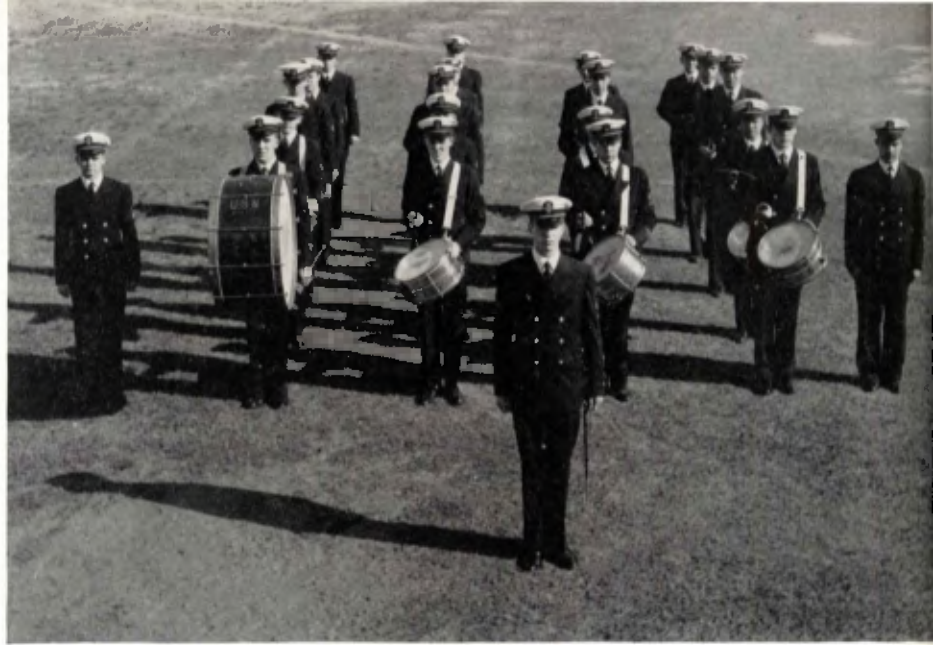


Discussing Plans for the Nautilus.

DRUM AND BUGLE CORPS



NORTHUP
MISS CARTER



McLAIN



REEVES

CADET LIEUT. (jg.) W. H. NORTHUP
Commander

Sponsor for Lieutenant Northup
MISS MARGARET CARTER

CADET 1st. P. O. W. C. McLAIN
First Petty Officer

CADET 2nd. P. O. C. P. REEVES
Second Petty Officer

REGIMENTAL BAND

CAPTAIN LOUIS GRIFFIN . . . Band Commander
Sponsor for Captain Griffin
MISS MARY ANN LINANE

A. C. CARLSON . . . First Lieutenant

L. S. COVEY . . . Sergeant-Drum Major

R. D. McGAUGHEY . . . First Sergeant

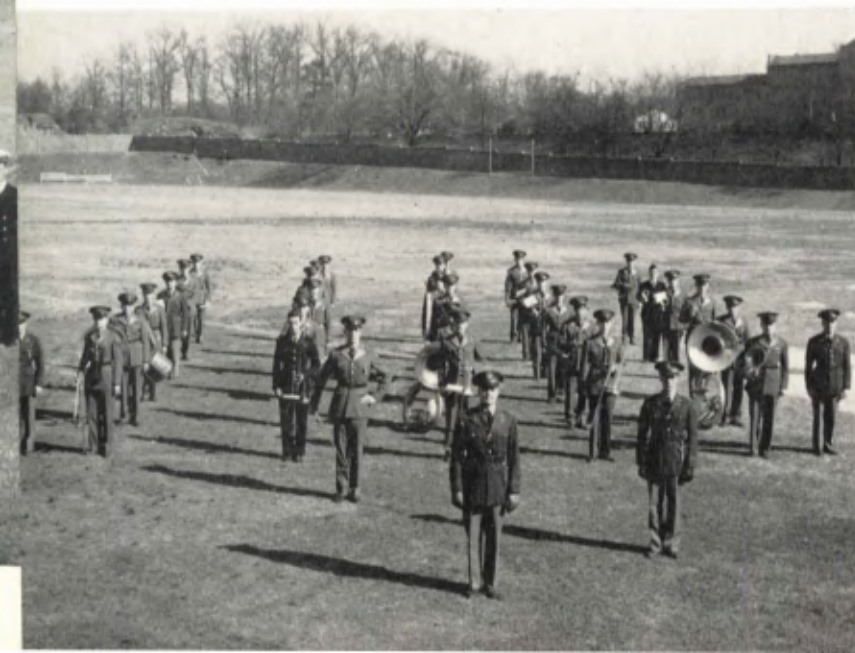
E. A. TAYLOR . . . Sergeant



CARLSON



GRIFFIN
MISS LINANE



ARMY RIFLE TEAM

MAJOR R. L. WATKINS Coach
 SGT. D. S. PARCHMAN Assistant Coach

- | | |
|----------------|-----------------|
| J. D. ALBRIGHT | J. F. MASON |
| F. A. BAKER | J. L. MATRANGAS |
| W. A. CARTER | J. C. McGAUGHEY |
| W. H. COOPER | E. P. OWEN |
| R. E. DOOLEY | B. REEVE |
| C. M. EDELBLUT | J. F. RICHARDS |
| W. D. FRANCIS | O. L. ROBERTS |
| S. J. HENRY | W. R. SEAY |
| C. R. HOFFMAN | W. W. VARNEDOE |
| J. G. KEARNEY | F. C. VIDA |
| E. S. LOVE | E. S. WALTON |
| R. S. MANN | D. W. WOOD |



NAVY RIFLE TEAM

LIEUT. P. D. ELLIS Coach
 ENSIGN R. G. BURTON Coach
 C. G. M. F. M. CRISWELL Assistant Coach

- | | |
|------------------|------------------|
| C. H. COULON | C. W. KILPATRICK |
| E. W. DE JON | J. D. KINSEY |
| F. H. EDWARDS | S. R. KRYSIAK |
| J. A. FEAGLE | T. MORCOTT |
| J. B. GATTEY | H. RILEY |
| R. GOODMAN | W. A. SCHMID |
| M. A. GOWEN | J. D. WHITE |
| E. T. HUNGERFORD | W. L. WOOD |
| W. R. IRWIN | W. K. WOODWARD |
| H. H. KAISER | |



Practice at the Rifle Range

