

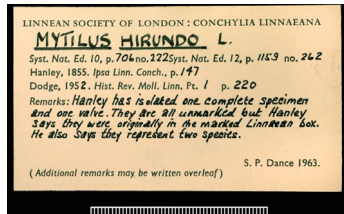
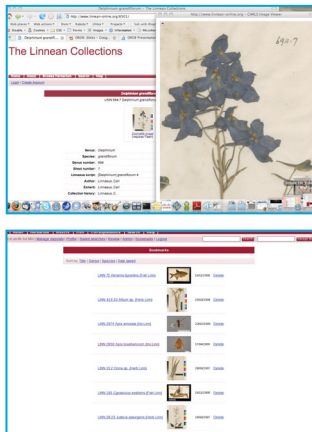


Image © Linnean Society of London

# Linnean Online and SNEEP



## Linnean Online [www.linnean-online.org](http://www.linnean-online.org)



In 2007, The Linnean Society of London commissioned ULCC to develop and host a system to manage their digitised archival collection of the specimens, manuscripts and correspondence of Carl Linnaeus. The digital archive consists of over 20,000 high-resolution images, amounting to over 10 Terabytes of storage. ULCC preserves these master images on multiple tape copies in its tape archive, on- and off-site.

For the online access system ULCC chose to use EPrints 3 repository software. ULCC customised EPrints to meet a number of specific requirements of the Society:

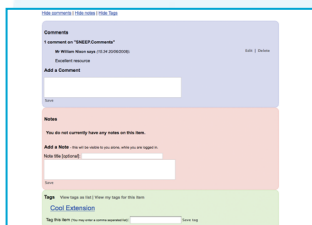
- Embedding the FSI Zoom Viewer allows users to view the images in fine detail, without access to the high-resolution images themselves. To supply the FSI Viewer, ULCC created new sets of Pyramidal TIFs, using an acceptable level of compression.
- Creating a subject tree based on the binomial system, and a metadata schema to support the specific descriptive standards of the Society's archive.

- Adding a Bookmarking feature, for repository users to maintain a personal list of specimens of interest.
- Adding a Commenting feature, for users to add observations to specimen records. In time this is expected to supersede the existing system of Determination Sheets for visitors to the archive.

Carl Linnaeus (1707-1778) was the renowned Swedish scientist who developed the binomial naming system of plants and animals that we are all familiar with today. During his lifetime Linnaeus collected thousands of specimens of flora and fauna in pursuit of his research. He is also responsible for giving us the Celsius temperature system in its present form, by inverting the scale invented by fellow Swedish scientist Anders Celsius. After his death, his specimens were bought by Sir James Edward Smith, who went on to found the Linnean Society of London. Until now, they have been accessible to only a handful of natural historians, in the vaults of the Society's headquarters in Piccadilly.

## JISC

### Social Networking Extensions for EPrints [sneep.ulcc.ac.uk](http://sneep.ulcc.ac.uk)



Between October 2007 and April 2008, with the support of the JISC Repositories and Preservation Programme, ULCC developed enhanced versions of the Linnean Online plugins for EPrints 3. The SNEEP project developed and demonstrated fully functional, open source EPrints plugins for:

SNEEP plugins have since been used in EPrints systems including:

- Comments: users can add public comments to abstract pages
- Notes: users can add private comments to abstract pages
- Tagging: users can add tags, manage a personal set of tagged bookmarks, and view tags across the repository

- University of Lincoln Institutional Repository (<http://eprints.lincoln.ac.uk/>)
- LanguageBox Learning Object Repository at Southampton University (<http://languagebox.eprints.org/>)
- SPROUTS Working Papers on Information Systems - a repository for the Association for Information Systems (AIS) (<http://sprouts.aisnet.org/>)

## About ULCC

The University of London Computer Centre was established in 1968 as the supercomputer and networking centre for London's university colleges. It is now a leading provider of IT services to the HE sector in London and beyond. ULCC's Digital Archives department has developed and managed projects for The British Library, the National Archives and the JISC.