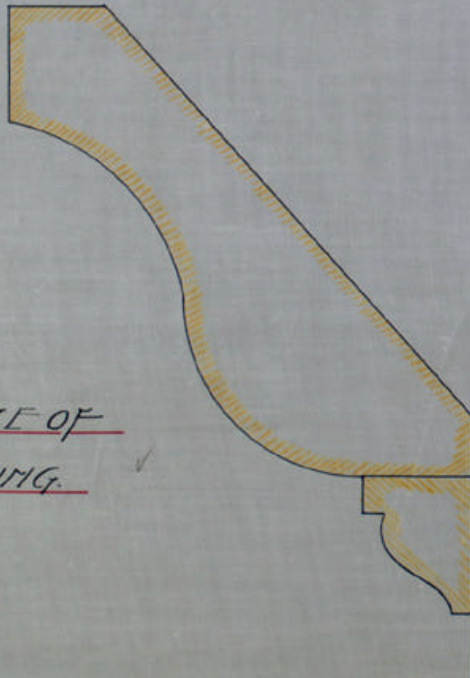
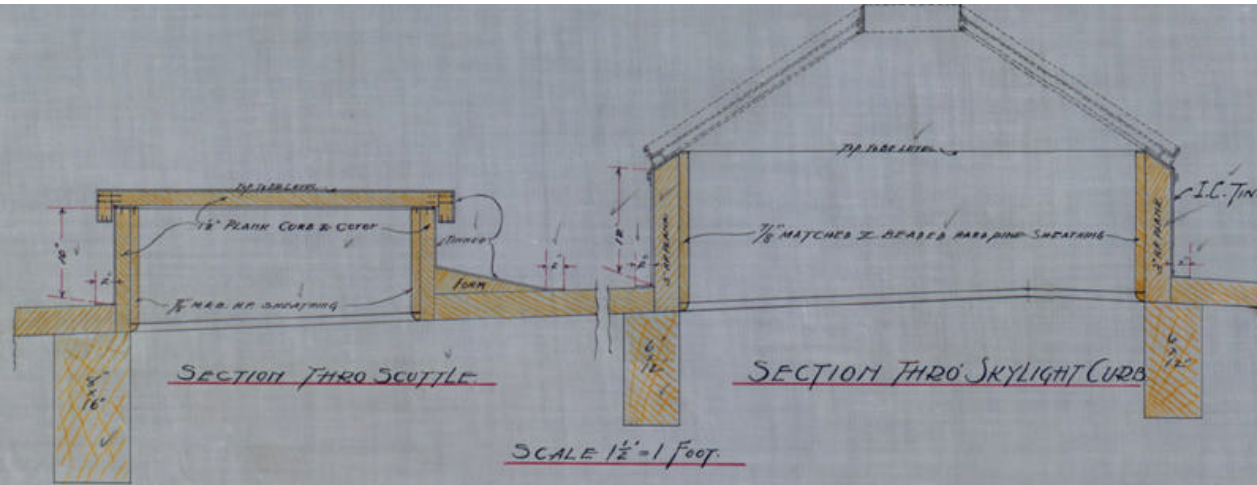


Sheet 15 - Detail of partition work



FULL SIZE OF
MOULDING.

DETAIL OF CORMICES FOR
NEW TEXTILE BUILDING.
GEORGIA SCHOOL OF TECHNOLOGY

ATLANTA.

GEORGIA

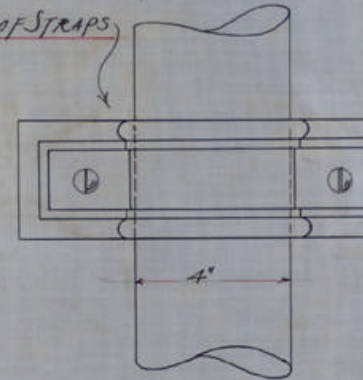
SCALE 6 IN. = 1 FOOT

OCTOBER 26, 1898

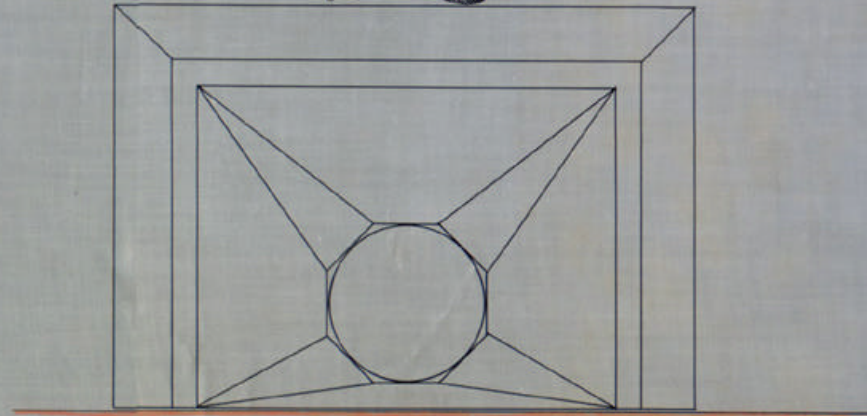
bottom left

FRONT ELEVATION OF CONDUCTOR HEAD.

SEE ELEVATIONS FOR SPACING OF STRAPS



ELEVATION OF STRAPS



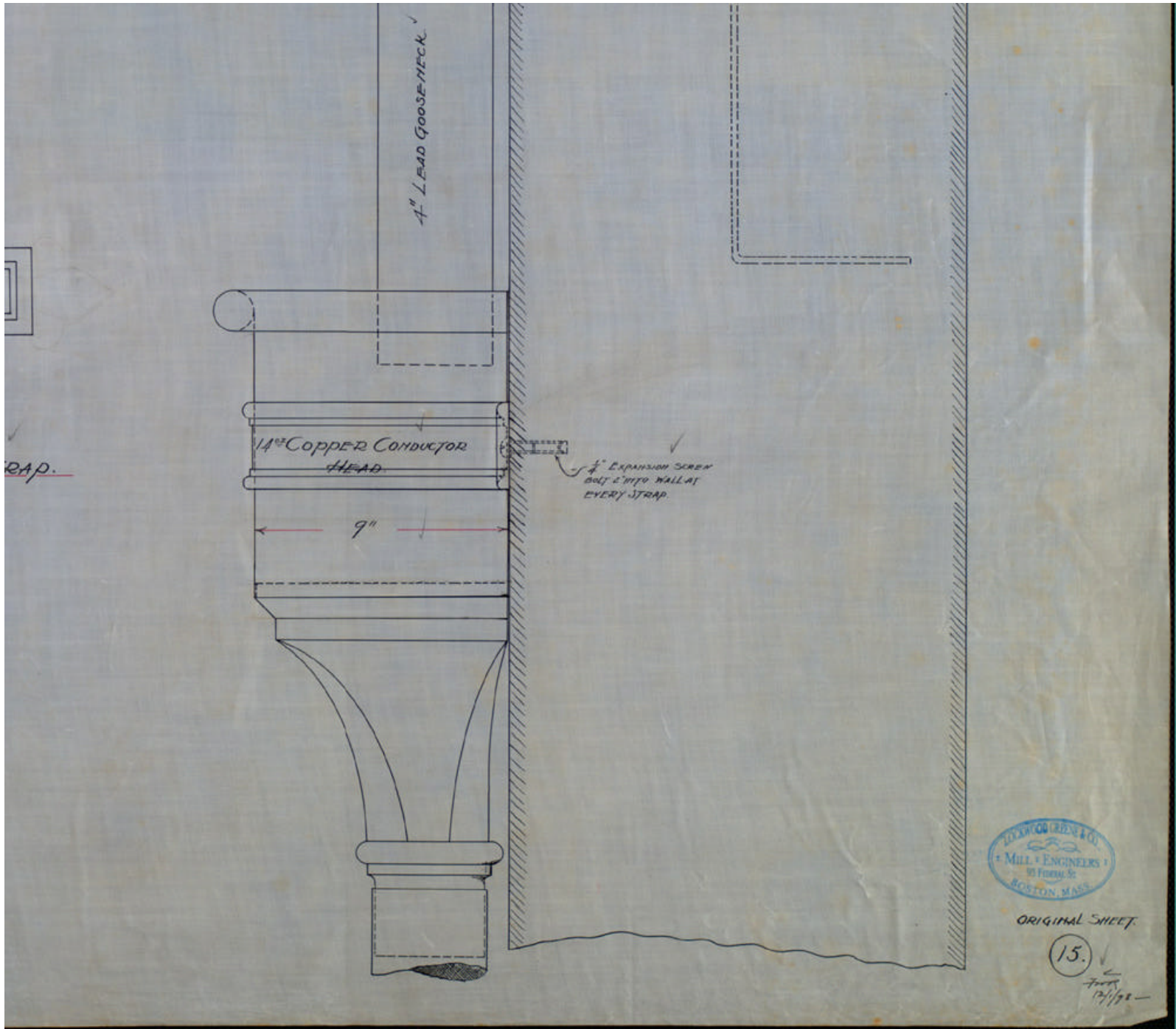
PLAN
LOOKING UP.

LOGY.

GIA.

8.





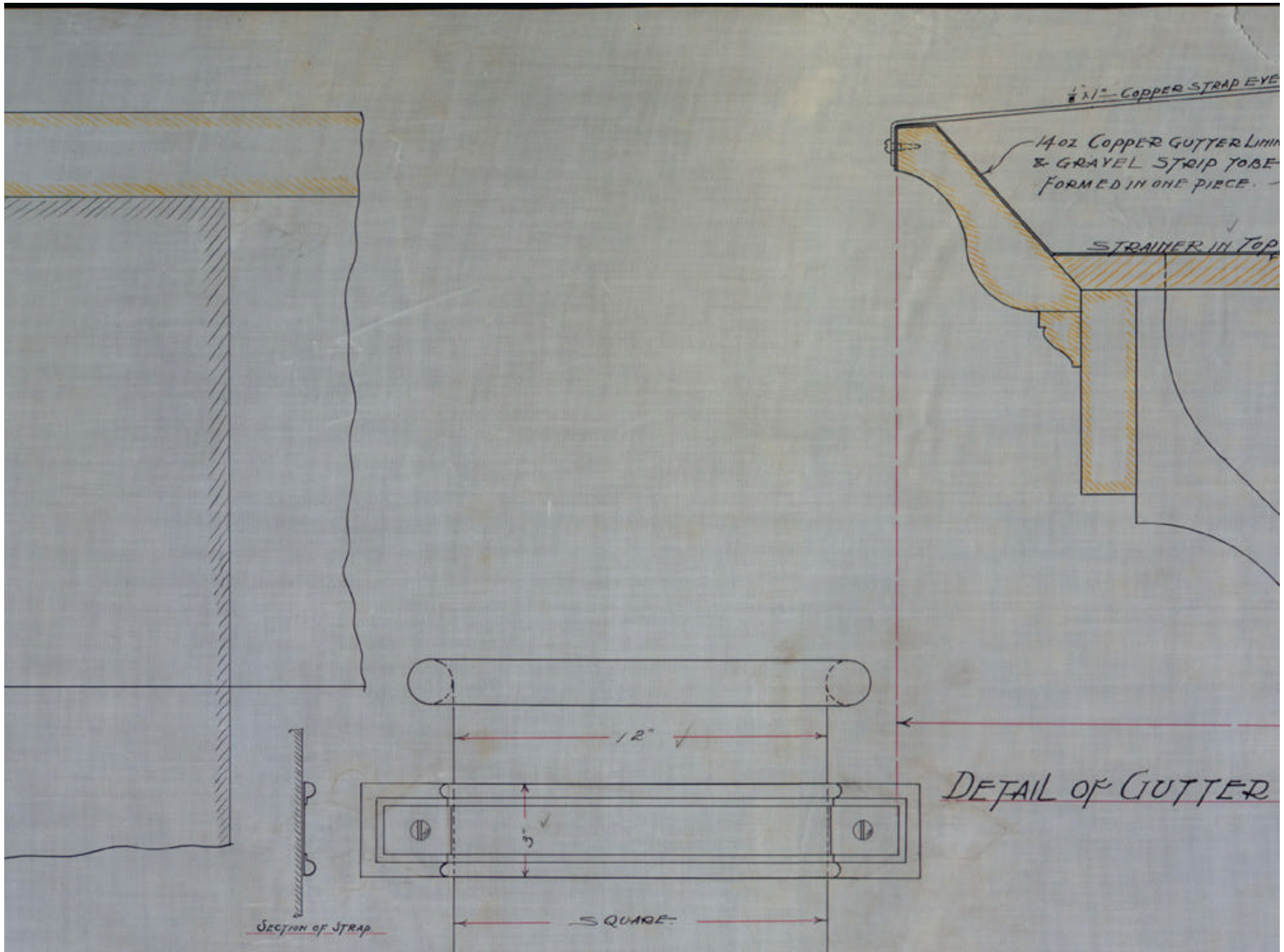
ORIGINAL SHEET.

(15.)
17/190-

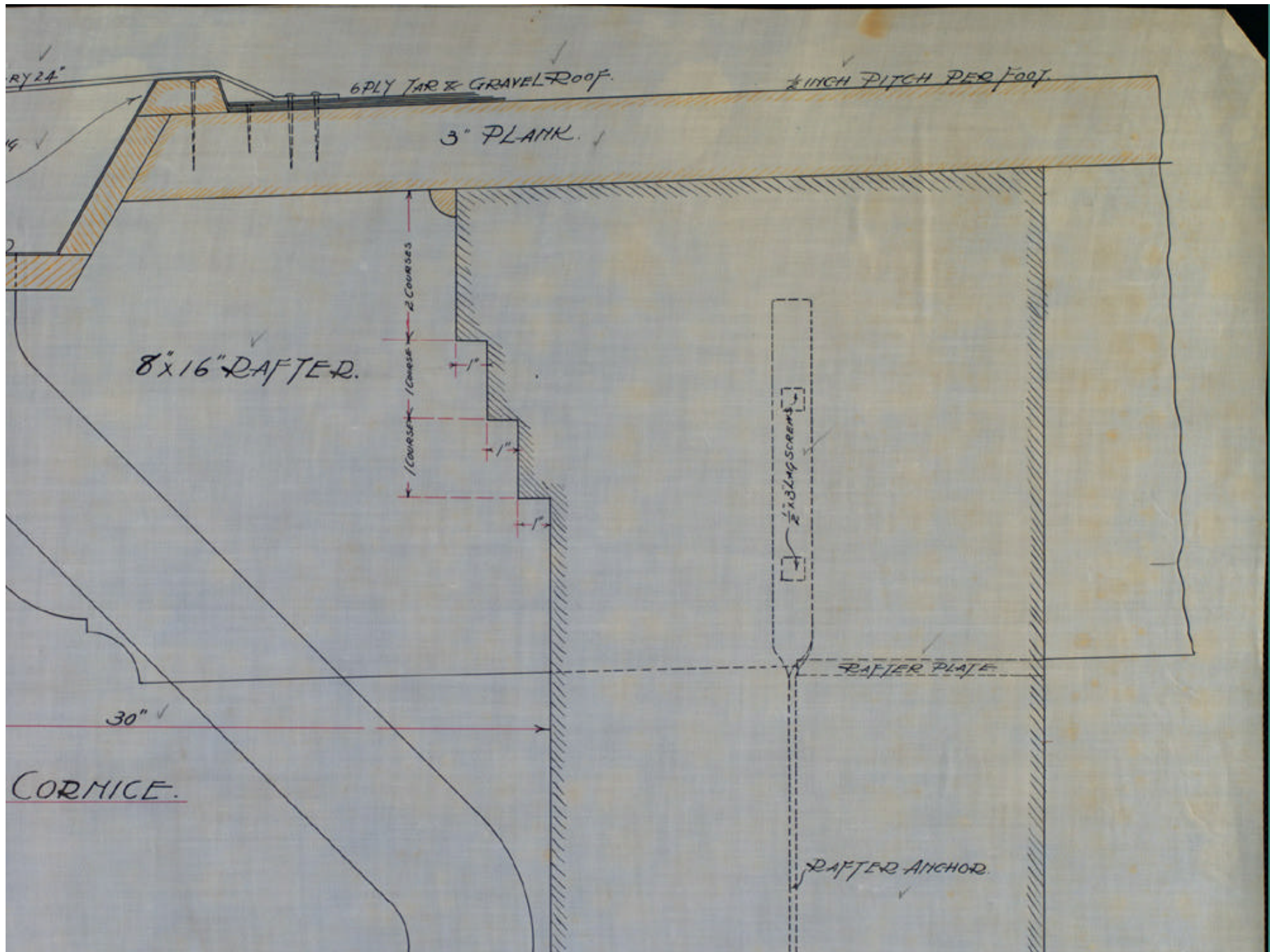
bottom right



top left



top center



top right