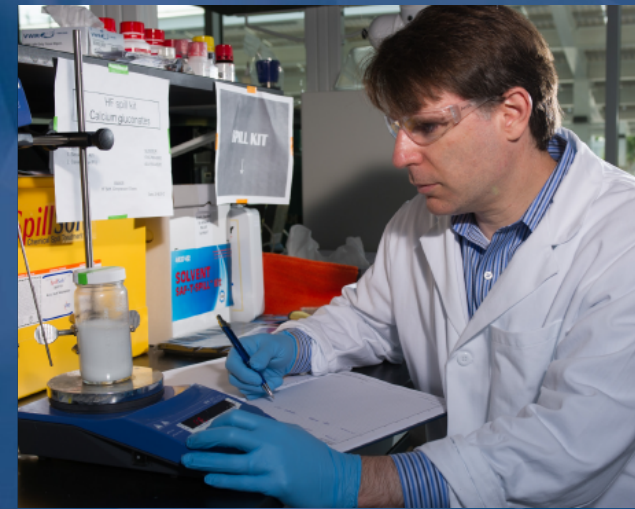


Georgia Tech Advisory Board

October 10, 2014



G. P. "Bud" Peterson
President

Expanding Our Influence



EXPANDING TECHNICAL & PROFESSIONAL
EDUCATION OPPORTUNITIES

1 2 3 4 5 6

Georgia – Where Aerospace Takes Off



Georgia Tech is making its mark in areas ranging from energy to cyber-security to space, with faculty, staff, and alumni offering expertise on panels, testifying before Congress, serving as media experts, and in other leadership positions.

SECURITY

In just the past 5 years we have

- More than doubled the number of freshman applications
- Created and funded 25 new tenure/tenure-track faculty positions/year
- Endowed 10 new chairs or professorships per year
- Raised an average of \$140 million/year in new gifts and commitments
- Facilitated more than \$125 million/year in new construction and/or major renovations
- Provided a full scholarship for 125 + needy students per year
- Increased sponsored research by 40%
- Reduced administrative costs and improved service
- Dramatically increased student participation in study abroad, co-op/internships, and undergraduate research opportunities
- Greatly expanded our partnerships and collaborations
- Created additional vibrant innovation zones, each populated with industry partners

Students over the past 5 years:

Freshman Class

- Average SAT rose from **1355** to **1443**
- High school GPA rose from **3.81** to **3.94**
- Applications more than doubled



Overall Student Body

- Enrollment up **11%**
- Underrepresented minorities up by **29%**
- Women up by **20%**

Environment for Success



Over the past 5 years,
we increased first-year
retention rate from

93% to 96%

Increased graduation rates:

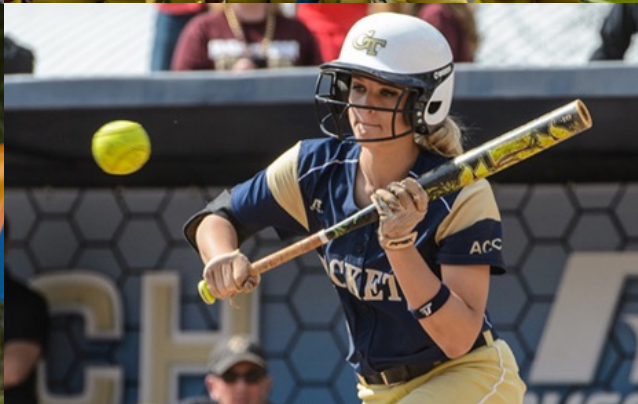
Four-year – 31% to 40%

Five-year – 72% to 75%

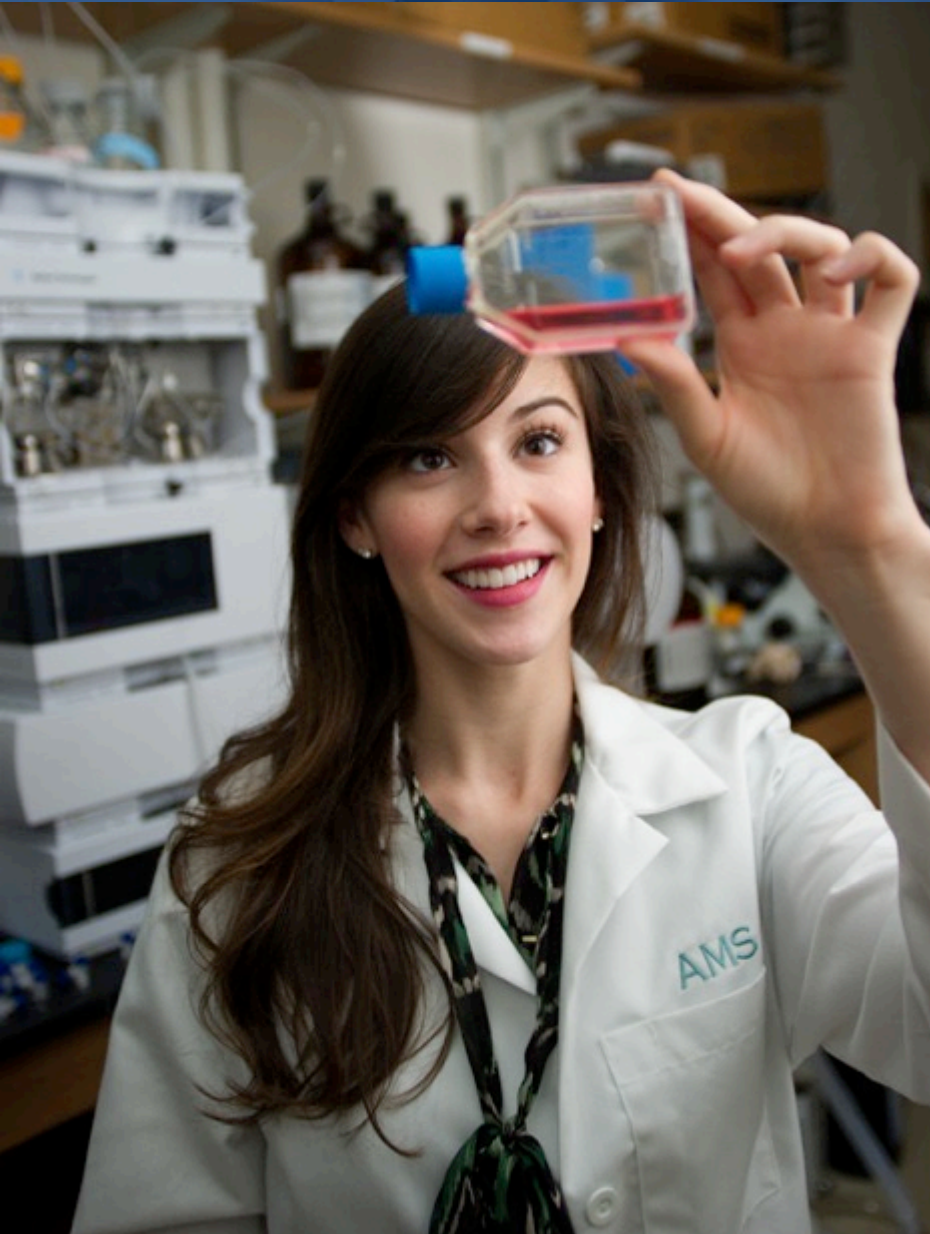
Six-year – 79% to 82%

In the past five years,
Georgia Tech has awarded
more than 32,000 degrees

Athletics



Innovative Learning Approaches



Collaborative

Interdisciplinary

Online Courses and
Programs (OMS-CS)

“Flipped” Classrooms

Emphasis on
Undergraduate Research

Service Learning

Global Challenges

Student Innovation



- Student Innovation competitions - the Convergent Challenge, sponsored by GE, Cisco, Code42, and GM; InVenture, TI:GER, Capstone, etc.
- Academic Programs such as the Master of Biomedical Innovation and Development
- Summer Startups
- GT Integrated Program for Start-ups (GT-IPS), I-Corps, Flashpoint

Innovation Centers



Lab will work on home automation, says Home Depot CIO Matt Carey.

HOME DEPOT TO OPEN INNOVATION CENTER AT GEORGIA TECH

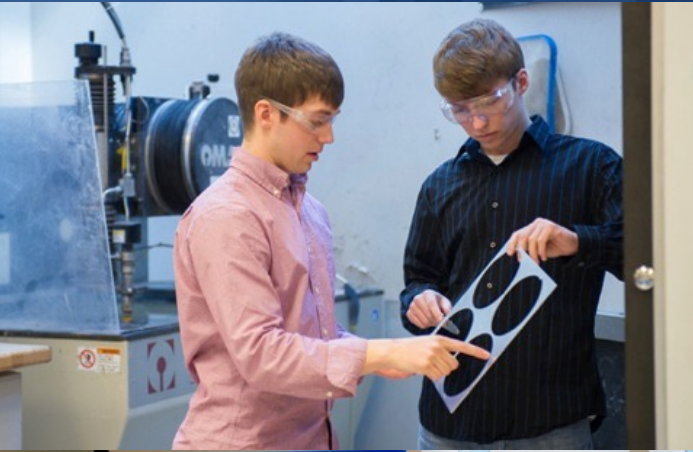
BY URVAKSH KARKARIA
ukarkaria@bizjournals.com

The Home Depot Inc. will open its first university-based research and development center in the heart of engineering powerhouse **Georgia Tech**.

The move is part talent-recruitment strategy, and part innovation lab, where Home Depot technologists and Georgia Tech students will work on next-generation products and services that eventually wind their way into the Fortune 100 retailer's stores, warehouses and supply chain networks.

"The center is a place where we are going to foster creativity and innovation,"

Nurturing Startups



EI² assisted startups based on Georgia Tech research innovations, resulting in **513 jobs and nearly \$100M in investment**



ATDC program companies reported revenues of more than **\$1.3B and more than 5,500 jobs**



GT:IPS



ATDC Select Companies



ATDC has two levels of membership and service. *ATDC Community* is for any Georgia entrepreneur that wants to learn how to grow a technology business. *ATDC Select* is a rigorous program and selection process for a limited number of companies that are typically, but not always, located inside our business incubator. Our current Select companies include:



Alii Healthcare - www.alihealthcare.com - Founded 2014

Alii Healthcare is a technology-enabled services company that provides consumers with unprecedented access to quality medical care from board certified physicians via a secure mobile health platform.



Azalea Health - www.azaleahealth.com - Founded 2008

Azalea Health Innovations is a leading provider of technology solutions for medical practices that helps those practices better manage patient care, medical records, claims, and accounting.



Clean Hands Safe Hands - Founded 2012

Clean Hands Safe Hands is a wireless hand hygiene monitoring system for hospitals.



Clinigence - www.clinigence.com - Founded 2010

Clinigence is a Healthcare IT company that analyzes electronic medical records, and uses the information to improve clinical and financial outcomes for providers.



GozioHealth - goziohealth.com - Founded 2013

GozioHealth has created a smartphone based, indoor positioning and wayfinding platform that dramatically improves hospital visits for both the visitor and the hospital. Innovative mobile technology enables hospitals to create persistent relationships with their communities that extend beyond the hospital's four walls.



IdeaString - www.ideastring.com - Founded 2011

IdeaString is the platform where people come together to connect, collaborate and create world-changing ideas.



ItzaFlash - www.itzaflash.com - Founded 2013

ItzaFlash is an online retailer currently focused on helping home improvement and hardware companies get rid of excess inventory and hold private sales targeting deal-oriented consumers.



Kanga - getkanga.com - Founded 2013

Kanga is a crowd-sourced on-demand local delivery company based in Atlanta. Available on both iOS and Android platforms, Kanga provides reliable, on-demand local delivery for consumers and businesses.



Lumense - www.lumense.com - Founded 2011

Lumense offers revolutionary chemical and biological sensors that enable real-time contaminant management and recipe control. Lumense saves companies time and money through the real-time detection of trace amounts of over 50 different substances.



Merlin Mobility - www.merlinmobility.com - 2011

Merlin Mobility enables enterprises to efficiently create, deploy and update purposeful, mobile Augmented Reality (AR) content that increases positive interactions between consumers and brands.



Monsieur - www.monsieur.com - Founded 2013

Monsieur is an artificially intelligent robotic bartender that makes great-tasting cocktails that keep people happy and businesses profitable.



NextInput - www.NextInput.com - Founded 2012

NextInput markets next-generation pressure-sensitive touch technology for smartphones, tablets, laptops, automotive touch zones, and many other touch applications.



OneCare - www.onecare.me - Founded 2010

OneCare is a chronic care management company dedicated to bringing technology to the management of chronic diseases.

ATDC Select Companies — September 2014



Predikto - www.predikto.com - Founded 2012

Predikto harnesses the power of predictive analytics to address operational challenges in asset intensive industries like manufacturing, power generation and transportation.



Rescour - www.rescour.com - Founded 2013

Rescour provides real estate investment professionals with accurate and continuously updated institutional-grade multi-family listings, data, and relevant news.



Rigor - www.rigor.com - Founded 2010

Rigor provides simple, powerful performance monitoring for revenue generating websites and Internet-based applications so that application owners can increase sales with less overhead.



Rimidi Diabetes - www.rimidi.com - Founded 2011

Rimidi Diabetes is a healthcare technology company that finds solutions to diabetes, one of healthcare's most pressing problems.



SafelyStay - www.safelystay.com - Founded 2011

SafelyStay pioneered the first dedicated clearinghouse for the peer-to-peer vacation rental industry.

ATDC Select Companies *(continued)*



ATDC Select Companies — September 2014



Sensiotec - www.sensiotec.com - Founded 2008

Sensiotec has developed the Virtual Medical Assistant (VMA), the world's first truly remote, totally noncontact, cardiorespiratory patient monitoring platform.



Sideqik - www.sideqik.com - Founded 2012

Sideqik provides solutions to take the headaches and risk out of cross-promotion, content promotion with marketing partners, and other traffic-driving partnerships.



Sila Nanotechnologies - www.silanano.com - 2011

Sila Nanotechnologies is a specialty chemicals company that develops next-generation energy storage materials for lithium-ion batteries.



Social123 - www.social123.com - Founded 2010

Social123 is a social aggregation and business insight company at the forefront of transforming the way outbound marketers use social data to drive 'game-changing' campaign results.



SoftWear Automation - www.softwearautomation.com

SoftWear Automation fully automates production lines for robotic cutting and sewing of garments. Its mission is to bring textile manufacturing back to America.



Soneter - www.soneter.com - Founded 2010

Soneter is a greentech company that reduces water cost and damage for building owners and tenants while improving property values and conserving resources.



Spectropath - www.spectropath.com - Founded 2010

Spectropath is a biomedical technology company developing innovative devices that allow physicians to identify selected issues (such as cancer) during surgery.



Springbot - www.springbot.com - Founded 2012

Springbot delivers an eCommerce marketing platform for the small and medium business market.



StarMobile - www.starmobileinc.com - Founded 2012

StarMobile is a disruptive cloud-based solution that delivers enterprise mobility at a fraction of the cost and time of any other approach.



Synapp.io - www.synapp.io - Founded 2013

Synapp.io is a digital marketing solution that ensures your e-mail marketing programs aren't shut down due to poor list maintenance.



Sytheros - www.sytheros.com - Founded 2012

Sytheros is reinventing wireless for the outdoor web of connected devices and sensors (called the "Internet of Things") with a patent-pending concept called RadioCloud.



UserIQ - www.useriq.com - Founded 2013

UserIQ is on a mission to build the most intelligent, most automated, and most effective in-app data engine and engagement tool ever known to man.



Vehcon - www.vehcon.com - Founded 2012

Vehcon is a vehicle telematics company that uses smartphone technology to extract data from vehicles.



Verdeeco - www.verdeeco.com - Founded 2009

Verdeeco helps utilities manage the massive amount of data created by smart grid devices.



VoAPPS - www.voapps.com - Founded 2008

VoAPPS' DirectDROP Voicemail delivers messages directly to a consumer's voice mailbox without calling their phone.



Voxa - www.voxa.com - Founded 2013

Voxa is a workflow automation platform that boosts productivity and empowers enterprise teams to work faster by turning emails into actions.

ATDC Select companies receive expert coaching from Entrepreneurs in Residence, as well as targeted introductions to sources of capital, industrial partners, and other resources needed to succeed. For more information, visit www.atdc.org.

Unicorns in Atlanta

1. AirWatch*
2. Radiant Systems
3. Witness Systems
4. Per-Se Technologies*
5. Internet Security Systems*
6. Scientific Atlanta*
7. TradeX
8. MindSpring*
9. WebMD

Unicorns: U.S. based companies valued at over \$1B after 10 years or less

* 5 of 9 have a Georgia Tech connection

25 Atlanta Startups to Watch

1. Autotrader
2. **Cardlytics*** (ATDC)
3. **Clearleap*** (ATDC)
4. **CloudSherpas*** (ATDC)
5. **Damballa*** (ATDC)
6. eFolder
7. Endochoice
8. IngeniousMed
9. **Ionic Security*** (ATDC)
10. Kabbage
11. **MailChimp***
12. News Distribution Network
13. Paymetric
14. **Pindrop*** (ATDC/Flashpoint)
15. **PlayOn Sports*** (ATDC)
16. Purchasing Power
17. **Salesfusion***
18. **SalesLoft*** (ATDC)
19. ShareCare
20. **SoloHealth*** (ATDC)
21. **Suniva*** (ATDC)
22. The Rainmaker Group
23. **Vendormate*** (ATDC)
24. **WhatCounts***
25. Yik Yak

* Georgia Tech connection – 14 of 25

High Performance Computing Center



Our Research Strategy

Pursuing a research strategy involving the entire Institute **to maximize economic and societal impact.**

Defined **12 core research areas**

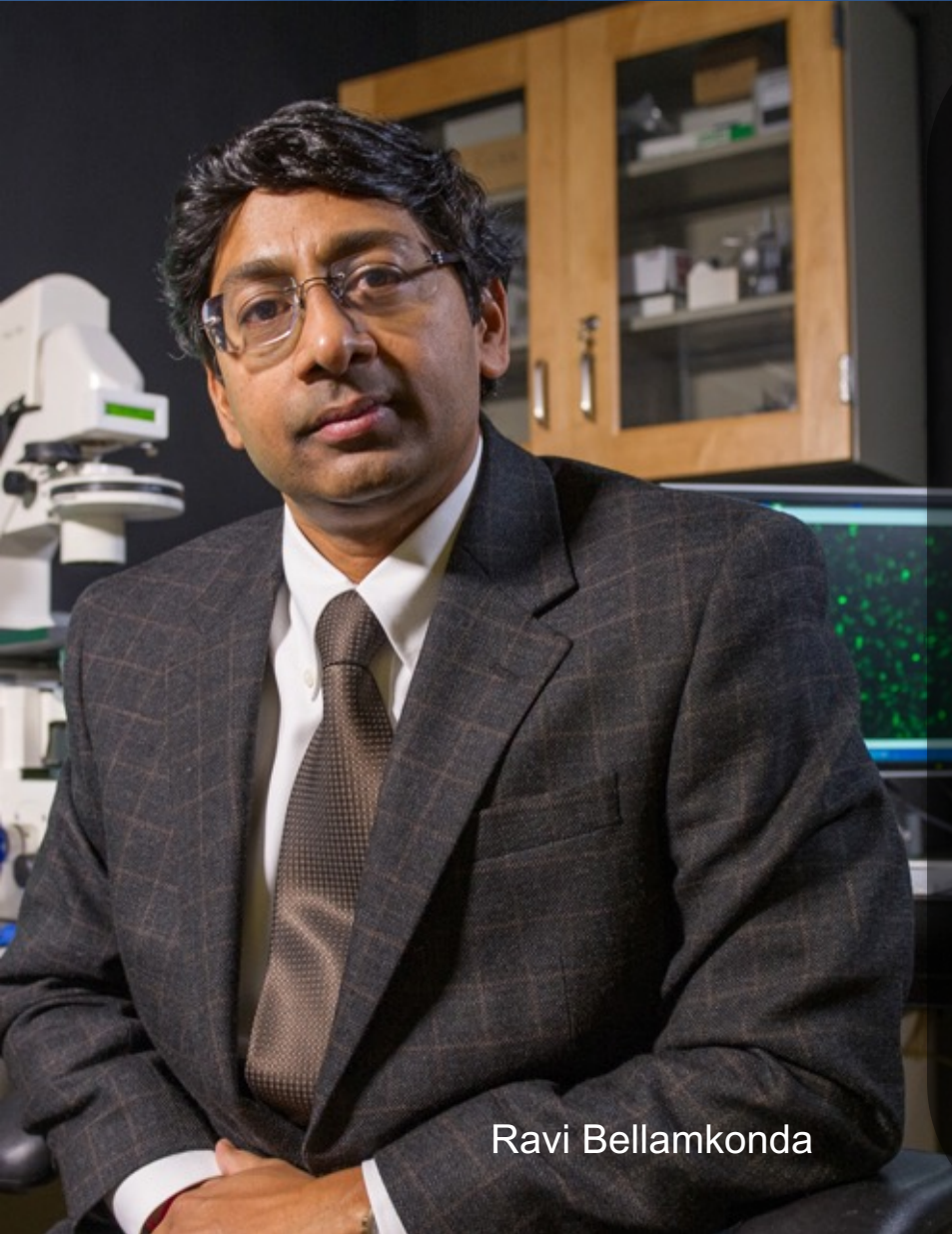
Established a focus on faculty through leadership platforms

Created synergy between academic, research, extension faculty, and related research support functions

Strengthened **external partnerships**



Bioscience at Georgia Tech



Ravi Bellamkonda

A unique blend of engineering, biology, chemistry and computing, along with partnerships like Emory University and Children's Healthcare, have transformed the campus into a magnet for bio-minded scientists.

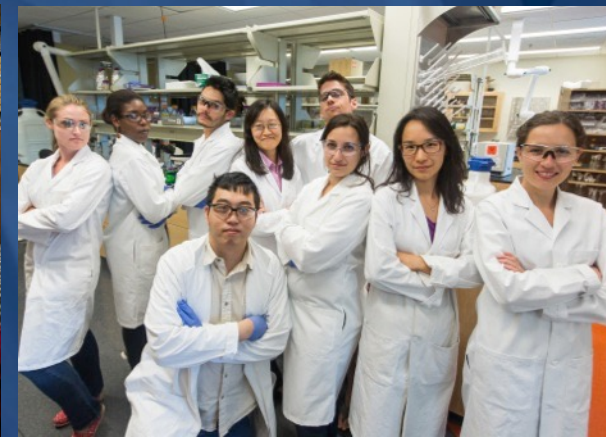


M. G. Finn



Susan N. Thomas

Tech's Bioquad: an environment for innovation and collaboration



Engineered Biosystems Building

6 stories, 220,000 square feet
Designed for interdisciplinary
collaboration



Looking Ahead



The Quality Enhancement Plan

- Georgia Tech offers **more than 350 courses** spanning every college which focus on, or include an emphasis area of sustainability.
- New SACS Quality Enhancement Plan: **Combining sustainability, experiential learning and community engagement**

One Georgia Tech

