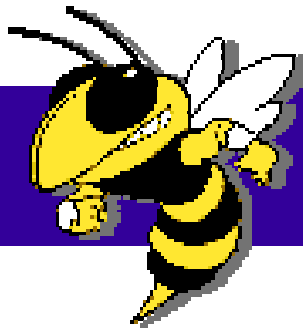




In-Process Gaging for Cylindrical Grinding



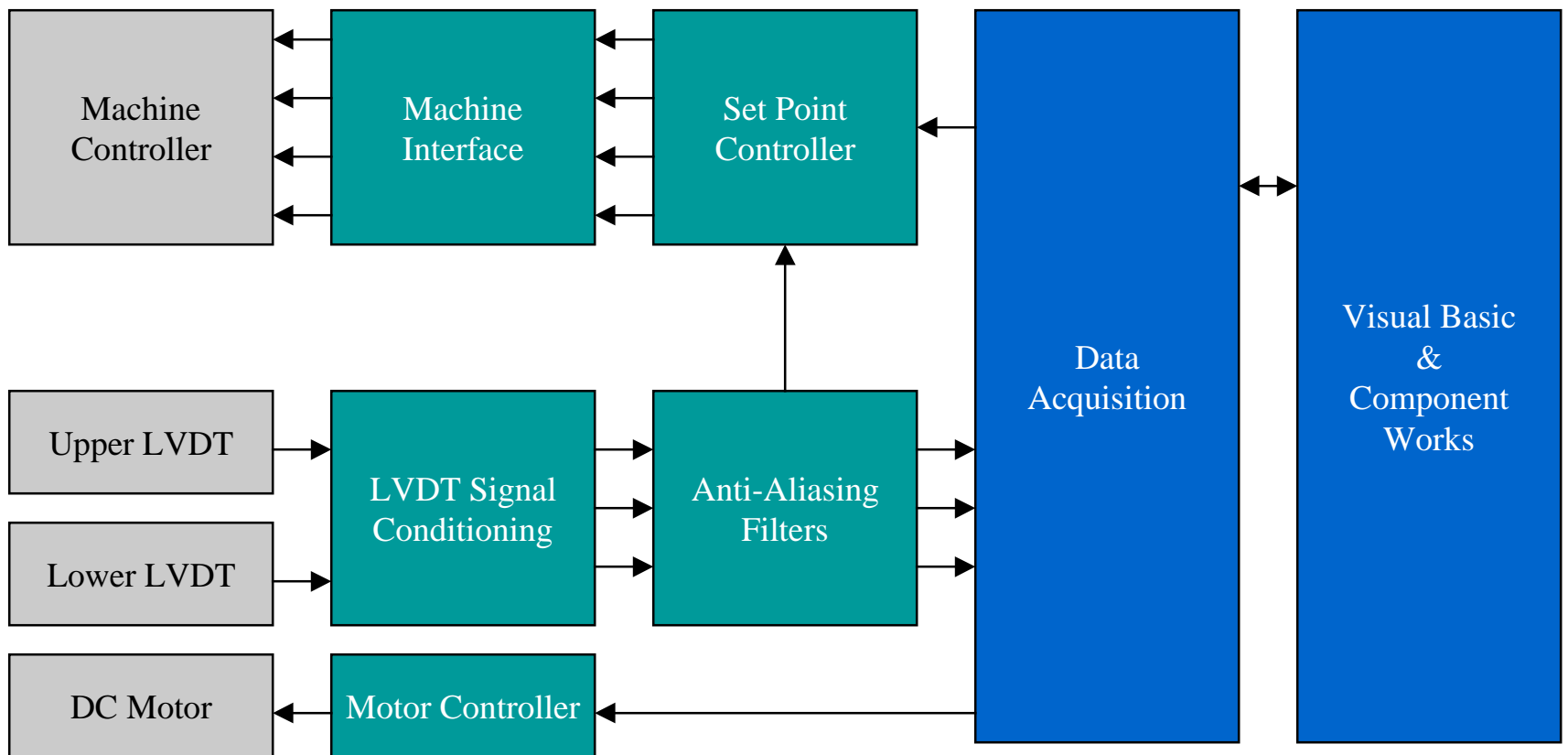
Georgia Institute of Technology

David Longanbach

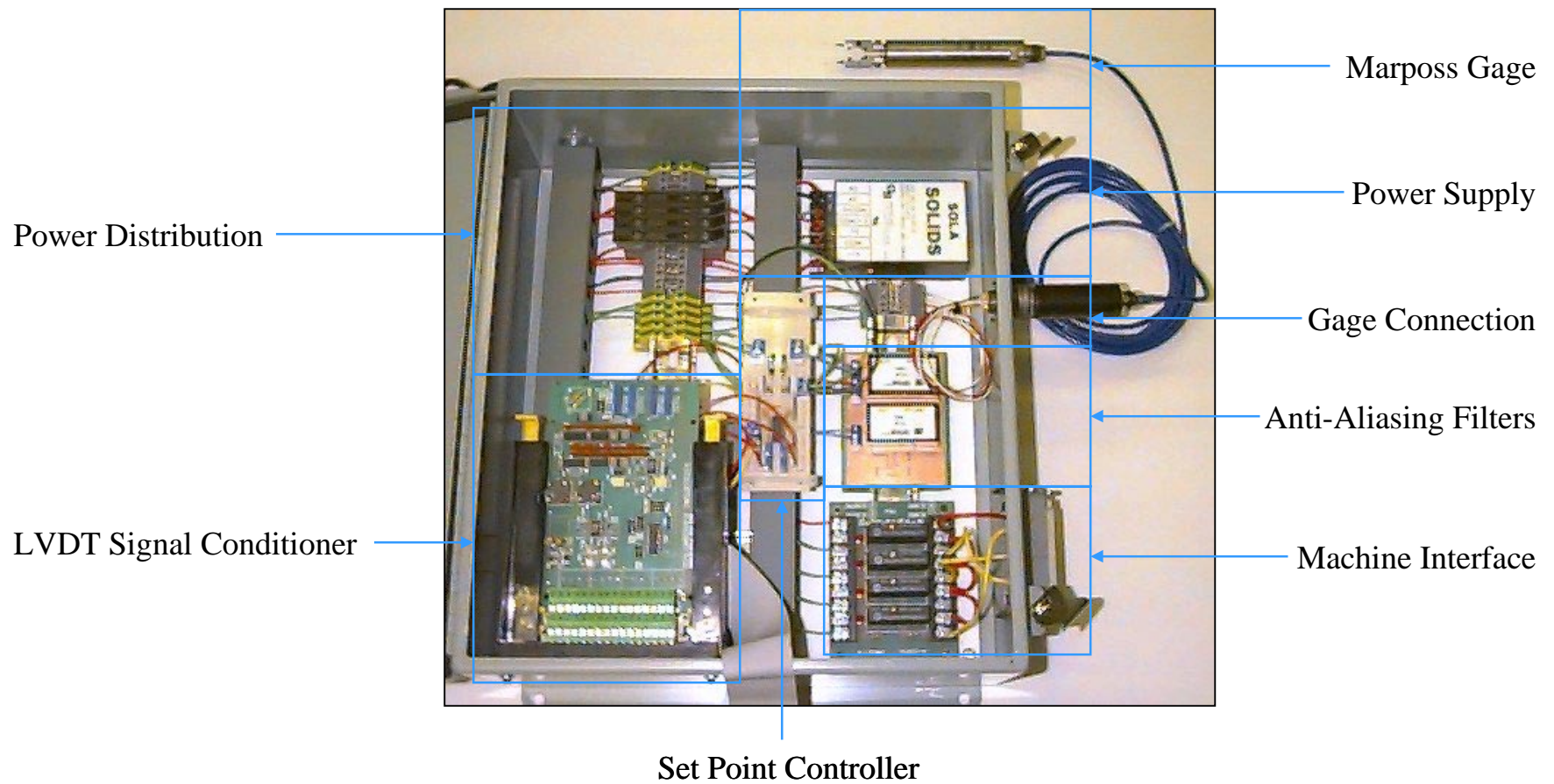
Advisor: Dr. Tom Kurfess



Gage Interface Schematic



Gage Interface Diagram



•
•
•

Objectives

- In-process waviness monitoring
- Hardware implementation
- Software implementation
- Validation on bore grinding machine

•
•
•

Hardware Implementation

- Sealed enclosure
- Industry standard signal conditioning
- Custom circuits required
- Stand alone operation

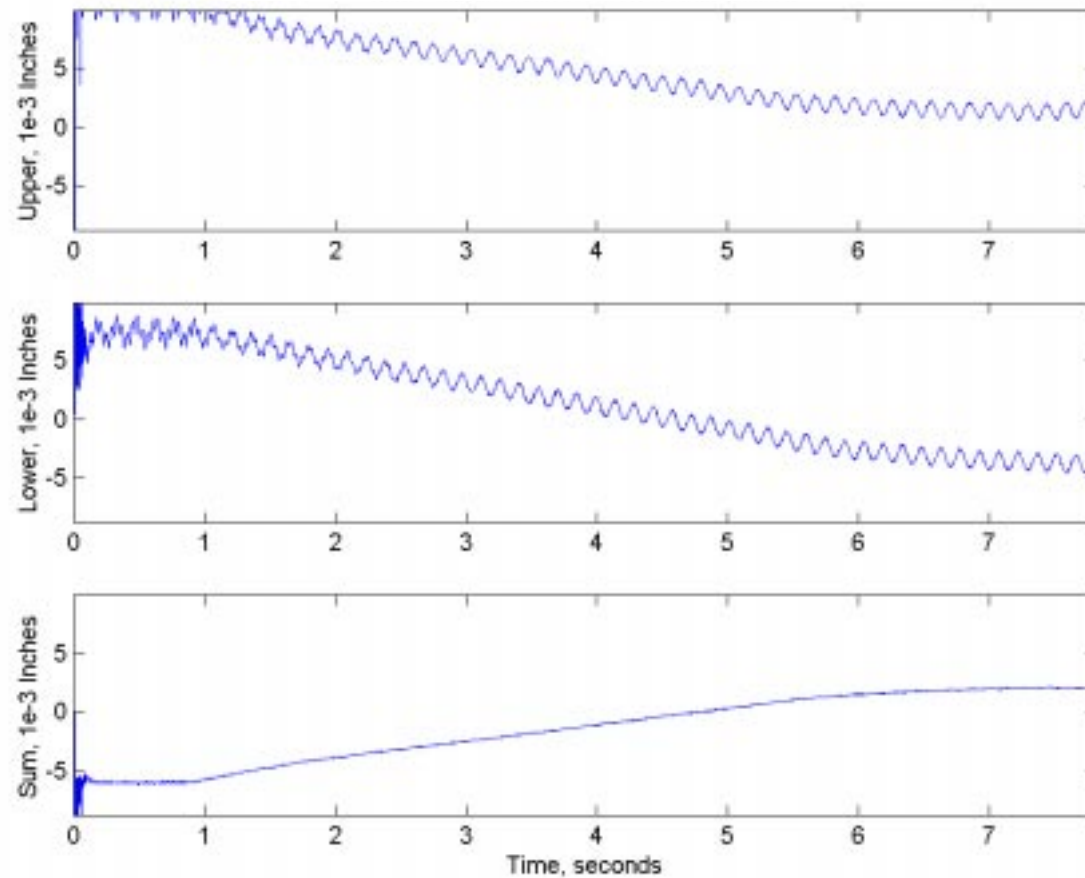
•
•
•

Software Implementation

- Visual Basic and Component Works
- GUI interface
- Required for machine setup
- Not required for machine operation

-
-
-

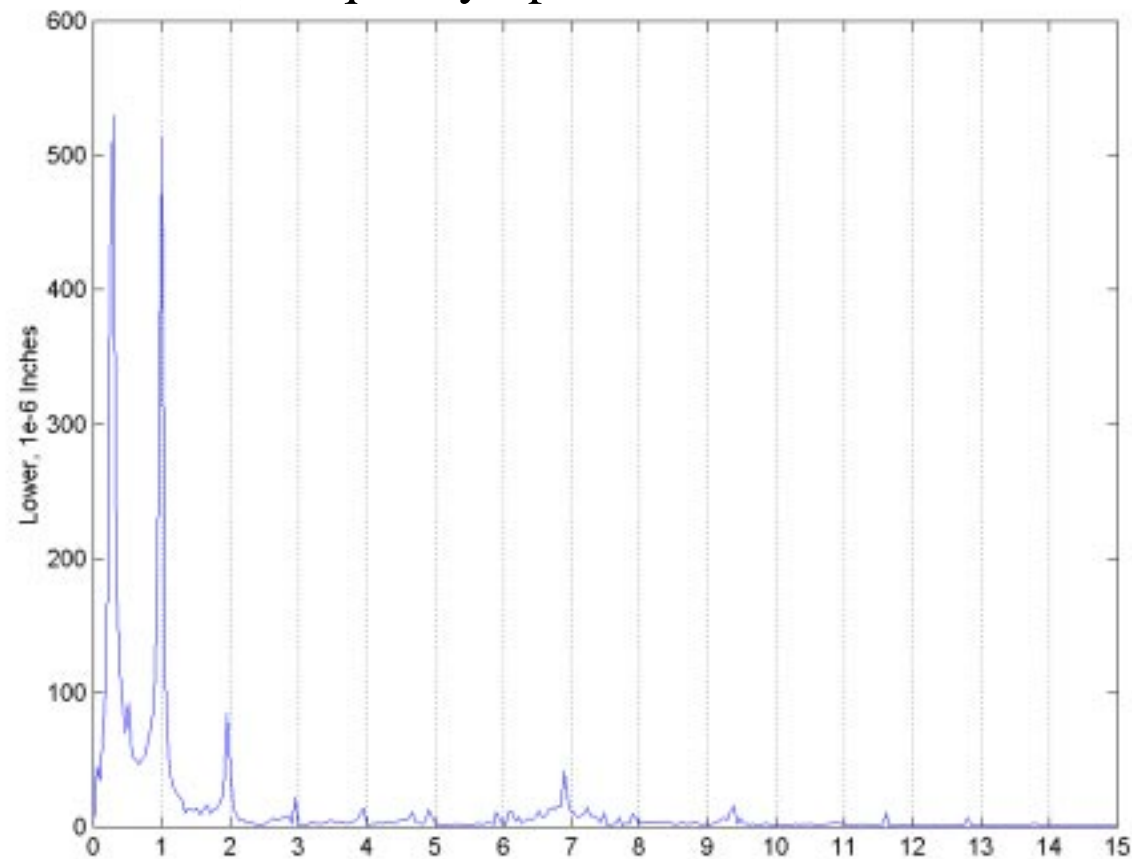
Single Process Validation Results



-
-
-

Beginning of Cycle Analysis

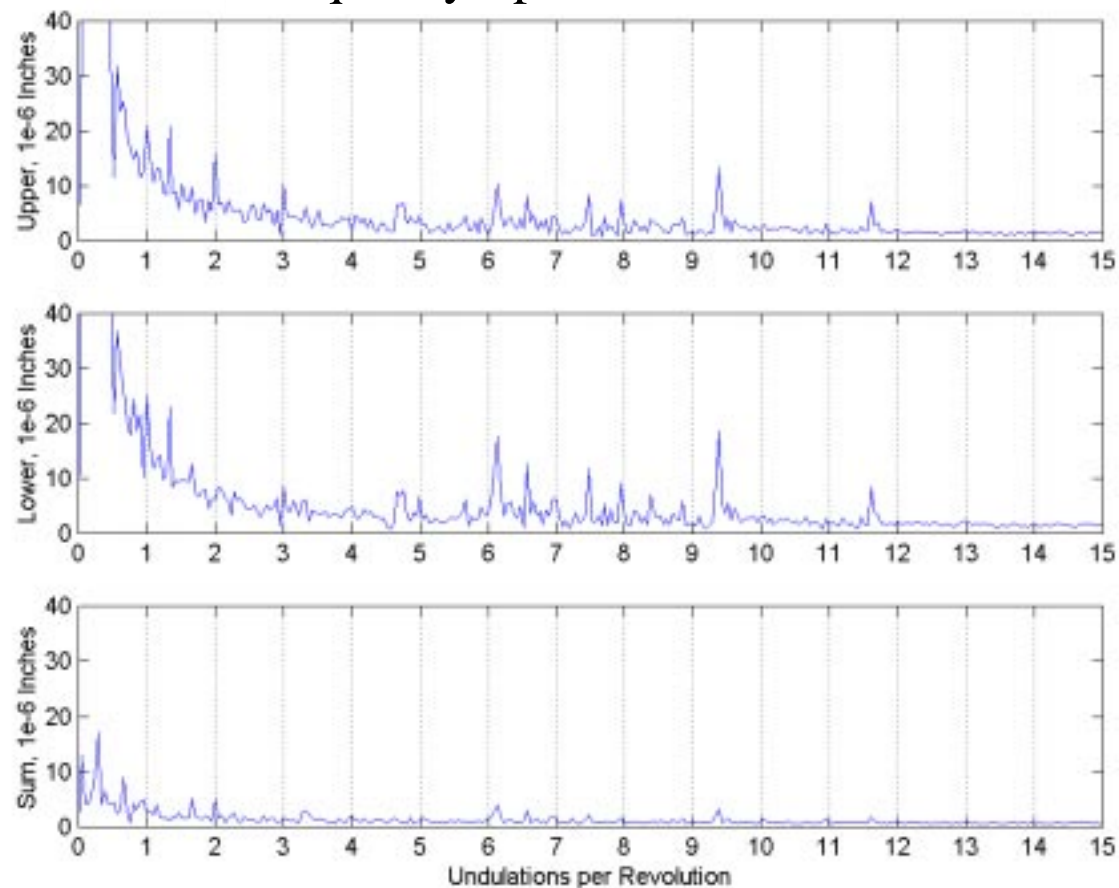
Frequency Spectrum, 1539 RPM



-
-
-

Middle of Cycle Analysis

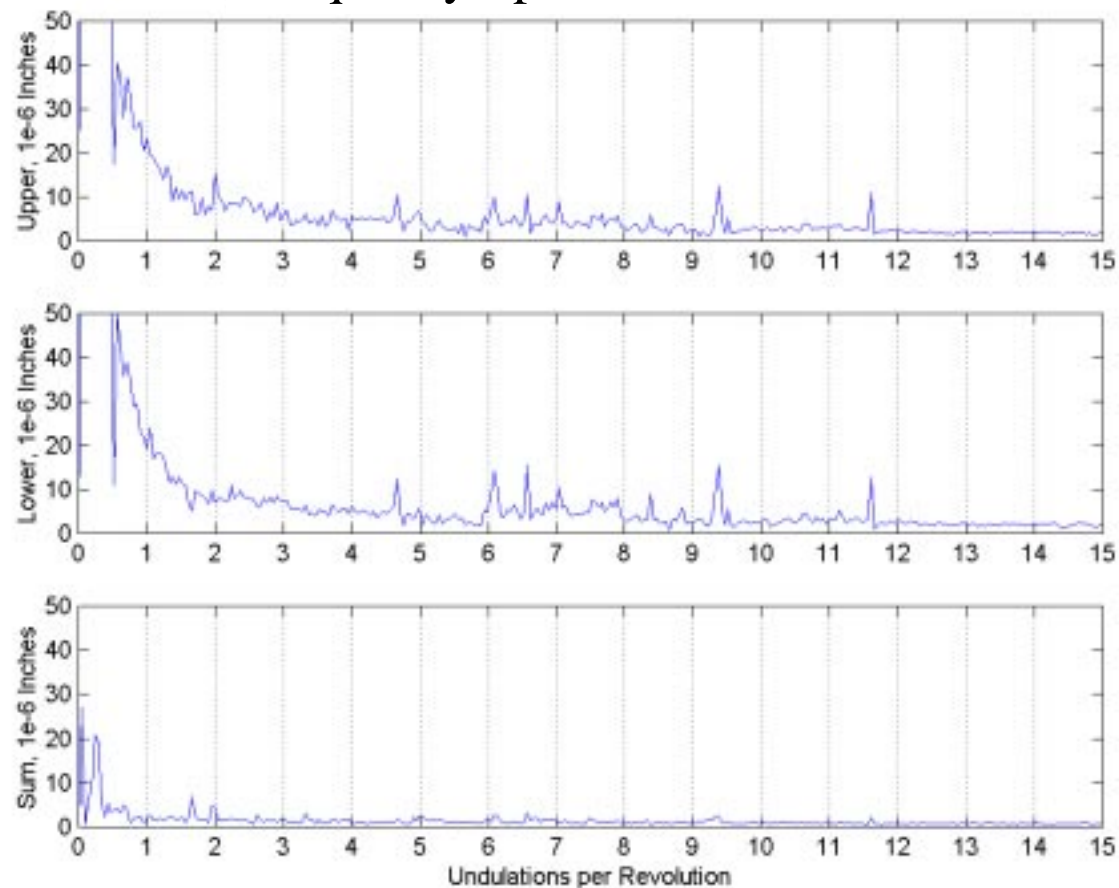
Frequency Spectrum, 1539 RPM



-
-
-

End of Cycle Analysis

Frequency Spectrum, 1539 RPM



•
•
•

Additional Work

- Improve software and GUI
- Improve set point controller
- More testing on more machines