

ADMINISTRATION



Everyone knows the President or the Dean of Students. But who knows these men's right hand, the secretary? Here, 'Mickey' Bone,





Dean Pershing's affable assistant, is followed through the day by the camera. From the newspaper at breakfast to the final brief pause before quitting time 'Mickey' collects money, keeps the Draft Board away, answers the telephone and keeps fraternity social chairmen busy filling out party reports.



Dedication

Mrs. Crosland honored for her thirty years of service

The Golden Anniversary Issue of the *Blue Print* is dedicated to Mrs. J. Henley Crosland.

Since 1927 Mrs. Crosland has served Georgia Tech as librarian. In those thirty years the growth of the library, both in size and prestige, has been phenomenal. The number of volumes has increased from less than 17,000 in 1927 to today's total of over 180,000 volumes. The annual appropriation for books and periodicals has increased from \$1,200 to over \$44,000.

Largely through her efforts the new Price Gilbert Library became a reality in 1953 and today it stands as one of the most outstanding college libraries in the world.

In 1945 she was chosen as "Atlanta Woman of the Year in Education." Since then she has been a student counselor, public relations wizard, an outstanding administrator and simply a wonderful person.

It is with a great sense of combined pride and humility that we honor thirty years of outstanding service by dedicating the 1957 *Blue Print* to Mrs. Crosland.





Acting President —

Dr. Weber begins second year as acting president

The history of Georgia Tech is filled with the stories of men who came to the aid of the school in her hours of need. But never before was her hour of need so great as it was on that fateful Monday afternoon of January 23, 1956, when the office of President of Georgia Tech was left vacant by the untimely death of Col. Van Leer. The man to take over the tremendous task of guiding one of the nation's finest and most complete educational institutions was Dr. Paul Weber, former head of the School of Chemical Engineering and then, Dean of Faculties.

In his year and a half of direction he has proven himself an excellent educator, a firm, but fair, administrator and above all, a man genuinely dedicated to the job of guiding Tech to future greatness.

Truly, her hour of need was never greater, but never before has anyone arose to the occasion in such a splendid manner as has Dr. Paul Weber.



Dr. Weber's educational ability was borne out by his selection as Dean of Faculties in an administrative move two years ago. ▲

Always interested in students and their problems, he welcomes a portion of the yearling class at annual YMCA Freshman Camp. ►

In all matters brought before him, Dr. Weber has acted with one singular thought in mind—the best interests of Georgia Tech. ▼



Dr. Paul Weber





DEAN MASON, the Dean of the Engineering College, was named to his present post in 1948, and since then he has become one of Georgia Tech's most prominent figures, having gained the respect and admiration of students, faculty members, and administrators. He graduated in 1930 from Speed Technical Institute, and in 1935 he was designated a Doctor of Philosophy by Yale University. His faculty work at Tech commenced in 1938, when he became an assistant professor in the School of Chemical Engineering. Credited with many of the improvements in the department, Dean Mason was instrumental in the Chemical Engineering Department's qualification to become Tech's first doctorate offering school. During the same year that he was named Dean of the Engineering College, he was also selected to Who's Who in Engineering. Dean Mason is known about the hill for his outstanding work, and although it requires his constant attention, he is never too busy to listen to any student's problem.

Dean Mason is truly an inspiration to the members of the student body and a credit to the Deans.

THE DEANS

DEAN HEFNER rates among the most experienced of the Deans. He has kept his present position, Dean of the General College, since 1948, when his title was changed from Dean of General Studies. Dean Hefner made his debut as a Georgia Tech administrator in 1936, when he was named Head of the Department of Mathematics, a job he held for nine years. In each of these facets of his service to Tech, Dean Hefner met his responsibilities with outstanding ability and endeavor. Dean Hefner was graduated from Roanoke College in 1925 with a B.S. degree; he received his M.S. degree in 1927 and his Ph.D. degree both from Chicago University. In 1950 he was selected to Who's Who in America. His honoraries include Tau Kappa Alpha, Phi Kappa Phi, and Sigma Xi, and he was a member of Pi Kappa Phi social fraternity. His favorite pastimes include amateur magic, photography and collecting tropical fish and rare postmarks.

Dean Hefner is the official advisor of freshmen experiencing registration problems, and many a frustrated freshman has looked to the Dean for a bit of his helpful advice.



DEAN GRIFFIN—Among the Deans, Dean Griffin stands alone in being a Georgia Tech graduate. Throughout his college years a sterling personality and outstanding leadership abilities elevated him into Tech's most exclusive honoraries, ANAK and Omicron Delta Kappa. Some time after his engineering studies were completed, in 1930, he was named Assistant to the Dean of Students, and in 1946 he became Dean of Students.

Dean Griffin, in giving his own special brand of helpful advice, has always been quick in gaining a student's confidence and respect, a quality which characterizes his ability to handle the duties and responsibilities of his job with the utmost efficiency.

DEAN AJAX—This year, as during his past ten years as Associate Dean of Students, Dean Ajax handled the coordination of veterans' affairs and assisted seniors in finding suitable positions in industry. A member of Sigma Alpha Epsilon, the Dean's honoraries include Omicron Delta Kappa, Phi Beta Kappa, and Phi Kappa Phi.

As our seniors put their learning into practice, they will have this man to thank for his guidance in determining their futures.

DEAN PERSHING—The friendly man with "the crew-cut and pipe," Dean Pershing, Georgia Tech's Assistant Dean of Students, was reared in Canton, Ohio. In 1939 he was conferred an A.B. in Biology, and seven years later he received his Master's in Education from Indiana University. Through his efforts at Tech, fraternities, organizations, and publications have developed immensely.

Dean Pershing's hobbies are many, but his purpose is one—to assist the Tech newcomer and solve his problems.





WILLIAM L. CARMICHAEL
Registrar



HORACE W. STURGIS
Associate Registrar



JAMIE R. ANTHONY
Controller
JAMES G. WOHLFORD
Director, Co-operative Division



ADMINISTRATION

Office of the President

PAUL WEBER, Ph.D. Acting President
ELIZABETH G. KOENIG Executive Secretary
BETTY JEAN VAUGHN Receptionist

Office of the Dean of the General College

RALPH A. HEFNER, Ph.D. Dean
MRS. LOCKIE MORTON Secretary

Office of the Dean of the Engineering College

JESSE W. MASON, Ph.D., D.Engr. Dean
ROCKER T. STATON, D.Engr. Assistant Dean
FRANCES M. NORTON Administrative Assistant

Office of the Dean of Faculties

PAUL WEBER, Ph.D. Dean of Faculties
MARY ELEAZAR BROWN Administrative Assistant

Office of the Dean of Students

GEORGE C. GRIFFIN, B.S. in C.E. Dean of Students
FRED W. AJAX, B.A., A.M. Associate Dean of Students
JOHN J. PERSHING, A.B., M.Ed., D.Ed.
Associate Dean of Students
JAMES A. STRICKLAND, B.B.A., M.Ed.
Director of Guidance and Counseling
WILHELMINA DOUGHERTY Administrative Assistant
HAZEL BEACH Placement Secretary
ROSE M. HUNT Clerk, Veterans
ANN BELL, B.A. Psychometrist—Guidance
JUDY LYNN HARDING Secretary, Guidance and Counseling
MARCIA V. BONE Secretary, Associate Dean of Students
MARY G. ALLYN Secretary, Dean of Students

Office of the Registrar

WILLIAM L. CARMICHAEL, M.S. Registrar
HORACE W. STURGIS, M.S. Associate Registrar
NORMA M. JOHNSON, A.B. Assistant Admissions Officer
VIRGINIA PEED Secretary

Office of the Controller

JAMIE R. ANTHONY Controller
EWEEL I. BARNES, B.S. Auditor
FRANK K. HOUSTON, C.P.A. Controller—Retired
FRANK B. WILSON, B.S.
Purchasing Agent and Coordinator of Housing
MILTON T. WHITFIELD Assistant Auditor
TONEY W. BRYANT, B.S.C. Assistant Auditor
WILLIAM N. PERRY, B.S.C. Internal Auditor
HOMER KEITH HASSELL, B.B.A. Fraternity Auditor
DANIEL P. TOMASULO Payroll and Budget Control
T. H. EDWARDS Accountant
DORIS S. WILCOX Payroll Clerk
PATRICIA HOLMES Secretary to Controller
MARGARET A. SCHEIDELER, A.B.
Student Loans and Collections
A. H. BARNES Director of Dining Halls

ROBERT B. LOGAN *Director of Institutional Stores*
 ROBERT H. CHRISTIAN *Georgia Tech Postmaster*

Co-operative Division

JAMES G. WOHLFORD, M.S. *Director*
 WILLIAM H. HITCH, B.M.E. *Assistant Director*
 HELEN FRECH *Secretary*
 JO ANNE PHILLIPS *Secretary*

The Library

MRS. J. HENLEY CROSLAND *Director of Libraries*
 DALE L. BARKER *Associate Director of Libraries*
 MISS SOPHIA SULLIVAN *Chief of Processing*
 MISS TATTIE MAE WILLIAMS *Chief of Readers' Services*
 MISS MARY LOU BARKER *Head Cataloger*
 MISS ELEANOR SMITH *Cataloger*
 MRS. WILMA LASSLO *Cataloger*
 MISS PATRICIA BAUM *Cataloger*
 MRS. JEANNE MAGILL *Cataloger*

MRS. J. HENLEY CROSLAND
 Director of Libraries



MRS. BEATRICE CAINE *Acquisitions Librarian*
 SIDNEY S. THOMAS *Acquisitions Librarian*
 MISS ELEANOR LEE SHANLEY *Acquisitions Librarian*
 MISS DOROTHY JONES *Documents Librarian*
 MRS. SARAH LEVY *Physical Processes Librarian*
 MISS SAFFORD HARRIS *Special Collections Librarian*
 MISS FRANCES KAISER *Interlibrary Loan Librarian*
 ROBERT N. SMITH *Science—Technology Librarian*
 MISS EMILY MALLET *Assistant Science-Technology Librarian*
 ARTHUR N. CORONTZES *General Studies Librarian*
 JOHN PATTILLO *Assistant General Studies Librarian*
 MRS. CHARLES T. POTTINGER *Music Librarian*
 MRS. KATHRYN A. HOOK *Secretary to Director*

Office of the Alumni

W. ROANE BEARD *Director of Alumni Placement & Services*
 ROBERT E. ESKEW *Associate Secretary*
 ROBERT B. WALLACE, JR. *Editor, Georgia Tech ALUMNUS*
 MRS. CHARLOTTE JACKSON *Bookkeeper*
 MRS. MARY PEEKS *Secretary*
 MISS LILLIAN HARRIS *Clerk-typist*
 MRS. THERESA WARD *Clerk*
 MRS. MARY C. STARR *Clerk*

Georgia Tech Y.M.C.A.

ROBERT C. COMMANDER, B.S., B.D. *General Secretary*
 DONALD A. DAVIS, B.S. *Associate Secretary*
 MRS. CLYDE LYON *Office Secretary*

Department of Public Relations

LESLIE F. ZSUFFA, B.S., M.B.S., M.E. *Director*
 ALICE CHASTAIN *Editorial Assistant*

Engineering Experiment Station

PAUL K. CALAWAY, Ph.D. *Director*
 JAMES E. BOYD, Ph.D. *Associate Director*
 HARRY L. BAKER, JR., B.S. *Assistant Director*
 FREDERICK BELLINGER, Ph.D. *Assistant Director*
 W. C. WHITLEY, Ph.D. *Chief, Chemical Sciences Division*
 T. W. JACKSON, Ph.D. *Chief, Mechanical Sciences Division*
 JAMES E. BOYD, Ph.D. *Acting Chief, Physical Sciences Division*



W. ROANE BEARD
 Executive Secretary, Alumni Association

ROBERT C. COMMANDER
 General Secretary, Y.M.C.A.

DONALD A. DAVIS
 Associate Secretary, Y.M.C.A.

E. K. RITTER, Ph.D. . . . *Chief, Rich Electronic Computer Center*
 J. W. WALLACE, B.B.A. . . . *Chairman, Service Groups*
 ROBERT B. WALLACE, JR., B.S. . . . *Head, Publications Services*
 R. A. HALL, B.S. . . . *Head, Mechanical Services*
 J. E. GARRETT . . . *Head, Photo. and Repro. Services*
 ROBERT J. KYLE, M.S. . . . *Head, Technical Information Services*
 KENNETH C. WAGNER, Ph.D. . . . *Head, Industrial Development Branch*
 RICHARD C. WILLIAMS, JR., B.S. . . . *Security Officer*

Physical Plant

CLAUDE A. PETTY, JR., B.S., E.E. . . . *Director*
 WALTER H. TRIPOD . . . *Requisitioning and Stores*
 MISS DEE GRANT . . . *Secretary*
 MRS. A. H. MULLIGAN . . . *Clerk*

Engineering Extension Division Office of the Director

ROGER S. HOWELL, B.S. in M.E.; M.S. in M.E. . . . *Director*
 MRS. BLANCHE B. TURNER . . . *Registrar*
 MISS BESSIE C. SHARP, B.S. . . . *Financial Secretary*
 MRS. MILDRED E. MOORE . . . *Secretary*

Engineering Evening School

MILTON R. MCCLURE, B.S. in I.M. . . . *Director*
 JOHN W. SMETHERS, B.S.; M.S. in I.M. . . . *Asst. to Director*
 MRS. EVA H. BURKE . . . *Secretary*
 MRS. ANNE C. JOINER . . . *Secretary*

Short Courses and Conferences

CHARLES H. TAYLOR, LL.B., M.B.A. (Resigned) . . . *Director*
 RICHARD WIEGAND, B.S.; M.A. . . . *Director*
 MISS JOANN JORDAN . . . *Secretary*

Industrial Education

THOMAS H. QUIGLEY, A.B., B.S. . . . *Director*
 JAMES FAYETTE CANNON (Retired) . . . *Assistant Professor*
 MRS. RUBY JACOBS . . . *Secretary*
 MRS. ELIZABETH SEVERANCE . . . *Secretary*

Southern Technical Institute

LAWRENCE V. JOHNSON, B.S., M.S. . . . *Director*
 LOY Y. BRYANT, A.B., M.A. . . . *Registrar*

GEORGE L. CARROLL, A.B. . . . *Dean of Basic Studies*
 GEORGE L. CRAWFORD, B.S., M.S. . . . *Dean of Technical Div.*
 CYRUS Y. MADDOX, A.B. . . . *Dean of Students*
 MRS. MINNIE V. MAVITY . . . *Administrative Assistant*

Health Department and Infirmary

S. LESLIE MORRIS, JR., B.S., M.D. . . . *Director of Health*
 JOHN B. RIGGSBEE, A.B., M.D. . . . *School Physician*
 LAMONT HENRY, B.S., M.D. . . . *Visiting Consultant*
 MAX M. BLUMBERG, B.S., M.D. . . . *Associate School Physician*
 ROBERT B. SCOGGINS . . . *Interne*
 HOWARD W. WEBB . . . *Interne*
 MRS. SARAH F. SPRUELL, R.N. . . . *Head Nurse*
 MRS. MARIE STINER, R.N. . . . *Nurse*
 MRS. JEAN L. CLAPSADDLE, R.N. . . . *Nurse*
 MRS. JANE GRANT, R.N. . . . *Nurse*
 CHARLES C. CRAWFORD . . . *Medical Technician*
 ALBERT M. TINSLEY . . . *X-ray and Physiotherapy Technician*
 MISS THERESA RICHARDSON . . . *Secretary*

ROGER S. HOWELL
Director, Extension Division



LESLIE F. ZUFFA
Director, Public Relations



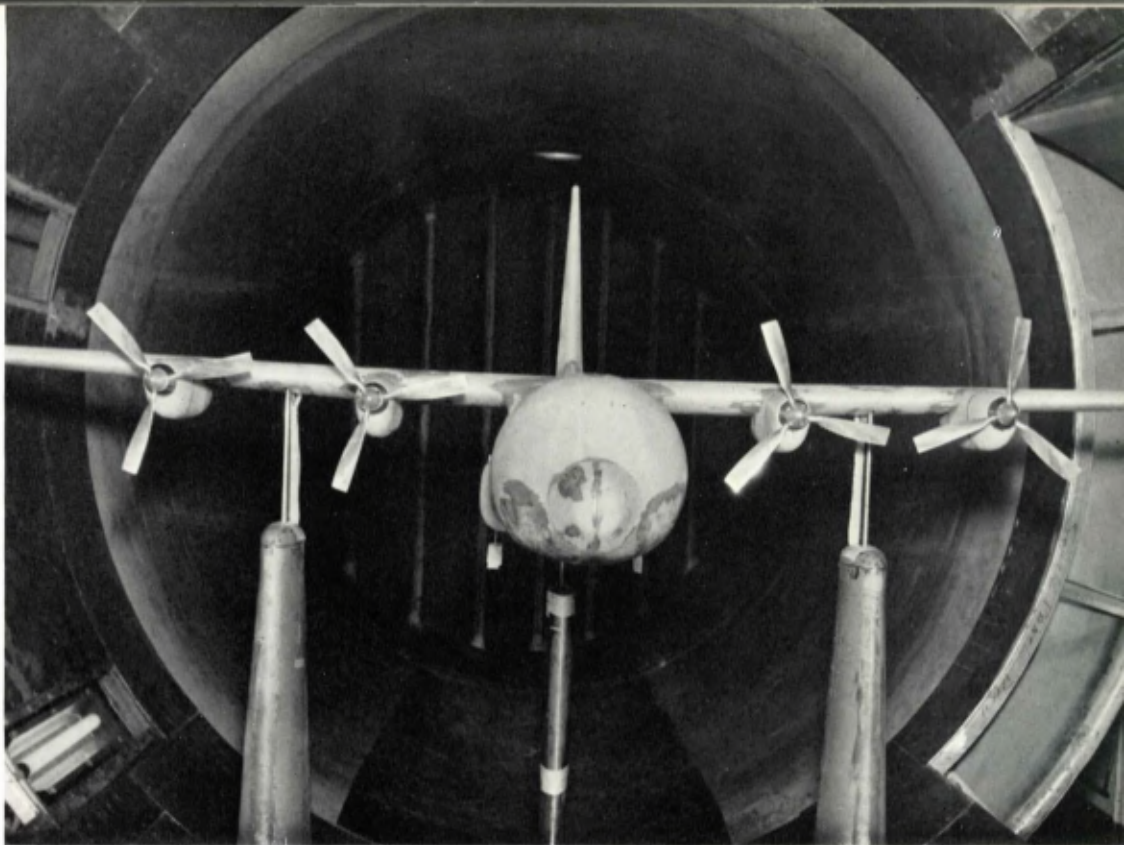
PAUL K. CALAWAY
Director Experiment Station



CLAUDE J. PETTY
Director, Physical Plant



RAY L. SWEIGERT



A C-130 is tested in the AE wind tunnel, one of many facilities available in Graduate Division.

GRADUATE DIVISION

- RAY L. SWEIGERT *Dean*
- MISS REBECCA PASCHAL *Secretary to the Dean*
- MRS. ELIZABETH OXFORD *Secretary*

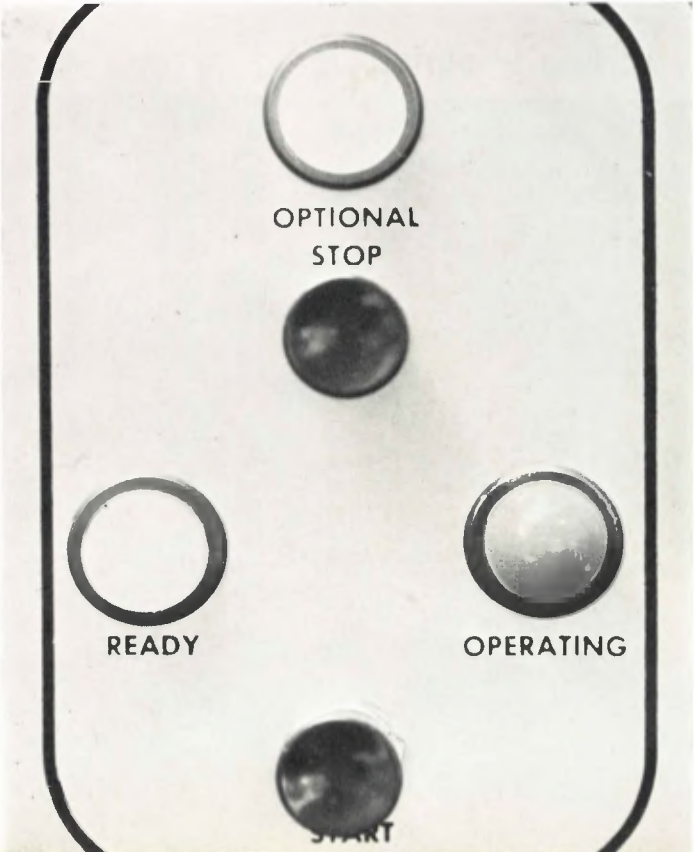
The Graduate Division is perhaps the most exclusive of the departments. It is that part of the institute through which the faculty of the Georgia Institute of Technology grants advanced degrees in engineering, science, management, and architecture. Study in the graduate department signifies the highest step in scholastic preparation possible at Tech; graduate students this year number 321.

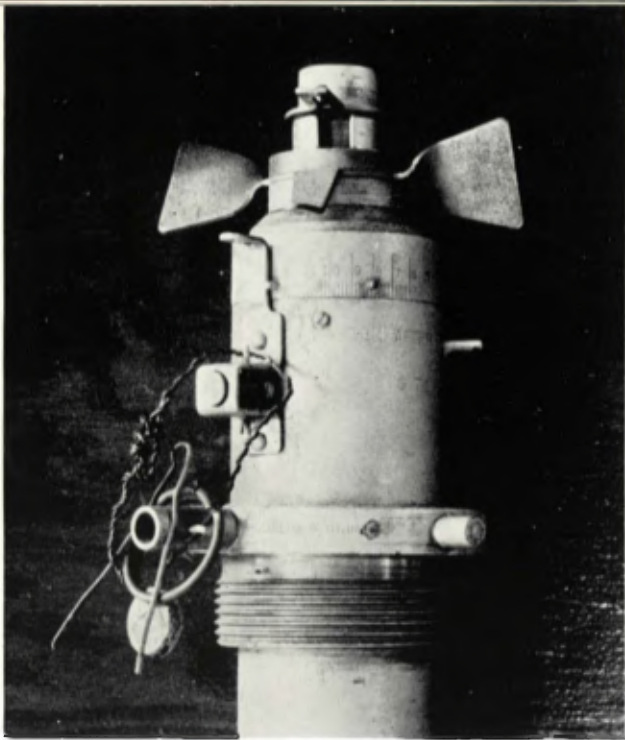
The growing complexities of science, of professional engineering, of modern organization and management, and of architecture result in a need for additional higher education on the part of those who contemplate entering various phases in these professional fields. Advanced education must be obtained to enable the engineer to deal successfully with professional engineering problems. This education can be obtained by a man through his own study or by graduate education. Few find it possible to acquire the needed education by their own reading and studying after a full day's work on the job, hence the advantage of graduate study.

Graduate study is highly recommended for students of engineering and science who wish to work in research, development, or highly technical and scientific design; and for students interested in industrial management at a high level, or who wish to serve as consultants in industry or government.

Master's degrees are offered in all engineering, science, and management departments; in addition, Master's degrees were initially offered this year in Nuclear Engineering and Nuclear Science. The degrees of Master of Architecture and Master of City Planning are offered in the School of Architecture, and the Doctor's degree is offered in Chemistry, Physics, Civil Engineering, Chemical Engineering, Electrical Engineering, Sanitary Engineering, and Mechanical Engineering.

A portion of an intricate instrument panel illustrates the possibility of a rapidly approaching push button era.





This example of aeronautical research emphasizes the responsibility placed upon today's aeronautical engineer.

Amid the recent developments of rocket power, jet propulsion, and supersonic flight, caused by the necessity of keeping world dominance in the air and the desire to perfect the conveniences of air travel, the aeronautical engineer has emerged in recent years into world-wide prominence.

Because of the recent increase in the demand for aeronautical research, enrollment increase has been allowed, courses in graduate work have been offered, and plans to give a doctorate degree have been made. The theoretical course has been augmented by improvements in the physical plant, which is now housed in two buildings and contains, in addition to classrooms and offices, a nine-foot wind tunnel, a two and one-half foot wind tunnel, a supersonic tunnel, and a structures laboratory.

School of AERONAUTICAL ENGINEERING

DONNELL W. DUTTON, B.S. in M.E., M.S. in A.E. . . . *Professor*
Director of School

WALTER CASTLES, JR., B.S. in A.E. *Professor*

ARNOLD L. DUCOFFE, Ph.D. *Associate Professor*

ROBIN B. GRAY, Ph.D. *Associate Professor*

JOHN J. HARPER, B.S. in M.E., M.S. in A.E.
. *Associate Professor*

WALTER R. CARNES, B. of A.E., Master of Science

. *Assistant Professor*

GEORGE J. SIMITSES, B. of A.E. *Instructor*

WILLIAM C. SLOCUM *Model Maker*

GEORGE W. D. COOK *Research Technician*

HENDRIK R. HUDSON, B.S. in M.E. . . . *Wind-Tunnel Engineer*

MISS SARAH Q. SLAUGHTER, A.B., M.A. . . . *Secretary*

MISS SARA N. ROBISON *Secretary*

DONNELL W. DUTTON



LEFT TO RIGHT: Hudson, Carnes, Ducoffe, Gray, Dutton, Simitzes, Castles, Harper.





PAUL M. HEFFERNAN

SEATED, FIRST ROW: Heffernan, Little, Isley. . . SECOND ROW: Beckum, Grady, Worrell, Bradendieck, Greene. . . THIRD ROW: Wilson, Menhinick, Shipley, Ramey, Gailey. . . FOURTH ROW: Pretz, Rabun. . . STANDING: Polychrone, Edwards, Bush-Brown, Saporta.

PAUL M. HEFFERNAN, B.S., M.S., M.Arch. . . *Professor*
 Director of School
 JAMES H. GRADY, B.Arch. . . *Professor*
 HOWARD K. MENHINICK, B.S., M.L.A.C.P. . . *Professor*
 HIN BREDENDIECK, Diploma from
 Bauhaus . . . *Associate Professor*
 DAVID J. EDWARDS, JR., B.A., B.Arch. . . *Associate Professor*
 H. GRIFFITH EDWARDS, B.S. in Arch. . . *Associate Professor*
 JAMES H. FINCH, B.S. in Arch. . . *Associate Professor*
 JULIAN H. HARRIS, B.S. in Arch. . . *Associate Professor*
 DEMETRIOS A. POLYCHROME, B.A., M.S.,
 D.S.C.E. . . *Associate Professor*
 RICHARD H. PRETZ, B.Arch. . . *Associate Professor*
 ISAAC E. SAPORTA, Diplom-Ingenieur,
 Architekt . . . *Associate Professor*
 RICHARD WILSON, A.A. Diploma . . *Associate Professor*
 ARTHUR FRANK BECKUM, JR., B.S., B.Arch.,
 M.F.A. . . *Assistant Professor*

RUFUS R. GREENE, B.S., B.Arch. . . *Assistant Professor*
 MALCOLM G. LITTLE, JR., M.C.P. . . *Assistant Professor*
 ROBERT F. RABUN, B.S., B.Arch. . . *Assistant Professor*
 GEORGE W. RAMEY, JR., B.S. in Arch. . . *Assistant Professor*
 VERNON M. SHIPLEY, JR., B.S., B.Arch. . . *Assistant Professor*
 JOHN W. FREEMAN, B.S., B.Arch. . . *Instructor*
 C. MALCOLM GAILEY, B.S., B.Arch., M.Arch. . . *Instructor*
 NORMAN L. WORRELL, B.A. . . *Instructor*
 DORIS NATELLE ISLEY, B.A., M.A. . . *Librarian*
 MARVIN E. McDONALD . . . *Technician*
 ANNE L. BAILEY . . . *Library Assistant*
 JOAN M. JORDAN, A.A. . . *Secretary*
 MARGARET M. KILBY . . . *Secretary*
 MRS. FRANCES C. MOORE . . . *Secretary*
 HAROLD BUSH-BROWN, A.B., M.Arch. . . *Professor Emeritus*
 JAMES HERBERT GAILEY, B.S.
 M.S. in Arch. . . *Professor Emeritus*

School of ARCHITECTURE

With the emphasis of architectural design shifting from dull, standardized methods of construction toward more imaginative and interesting concepts, the architect is becoming representative of a changing but progressing trend in today's thinking.

In its process of training students in the various aspects of architecture, Georgia Tech's School of Architecture offers four separate and distinct options. Option I, Architectural Design, is a five-year course leading to a degree of Bachelor of Architecture; Option II, Structural Design, is similarly a five-year course leading to the same degree; Industrial Design, and Light Construction, which are four-year courses, lead to a degree of Bachelor of Science. Also offered are graduate courses for specialized and advanced study in design, structure, history, and city planning.

Looking like the finished product, an architect's model provides a preliminary medium for constructive criticism.





LANE MITCHELL



LEFT TO RIGHT: Straley, Navarre, Hansard, Moody, Mitchell, Wysong.

LANE MITCHELL, Ph.D. . . . *Professor of Ceramic Engineering*
Director of School

HARRISON W. STRALEY, Ph.D. . . . *Professor of Geology*

WILLIS E. MOODY, Ph.D.

. *Associate Professor of Ceramic Engineering*

A. T. NAVARRE *Associate Professor of Geology*

CHARLES F. WYSONG

. *Assistant Professor of Ceramic Engineering*

W. CAREY HANSARD

. *Assistant Professor of Ceramic Engineering*

MRS. INEZ GOFF *Secretary*

School of CERAMIC ENGINEERING

A spindle sets a liquid in motion, and a dial records the torque; in this way viscosity is accurately measured.



From one of the oldest arts known to man evolved the modern industry of ceramics, and for the purpose of developing such ceramics products as brick, tile, glass, cement, and other non-metallic mineral products, the Ceramic Engineering Department diligently trains students. The course of instruction covers four years and leads to a degree of Bachelor of Ceramic Engineering. Graduate work leading to a degree of Master of Science in Ceramic Engineering is also offered. A degree-holding student has the foundation that should enable him to succeed in production, research, administration, and sales of any of the ceramic industries.

The School of Ceramic Engineering was organized in 1923 when the need for a laboratory in which industries in the South could turn for aid became apparent.

To the chemical engineer befalls the responsibility of developing and operating the chemical and manufacturing processes which undergo chemical change in fulfilling the purposes for which they are used. The increasing need for such apparatus has thrust the chemical engineer into a new prominence.

Through a fine curriculum, accredited by the Engineers' Council for Professional Development, and augmented by limited registration in the Junior and Senior classes, the School of Chemical Engineering has progressed immensely in quality in recent years and has easily met the demands of industry with highly trained chemical engineers.

The first undergraduate degree in Chemical Engineering was awarded in 1903, and in 1950 the first Ph.D. degree to ever be awarded at Georgia Tech was conferred by the Chemical Engineering Department.



A fairly insignificant section of a gas analysis system exposes the complexity of advanced Ch.E. apparatus.

School of CHEMICAL ENGINEERING

WM. MEESE NEWTON, Ph.D. *Professor*
Acting Director
J. M. DALLAVALLE, Ph.D. *Regents' Professor*
W. T. ZIEGLER, Ph.D. *Regents' Professor*
H. C. LEWIS, Ph.D. *Professor*

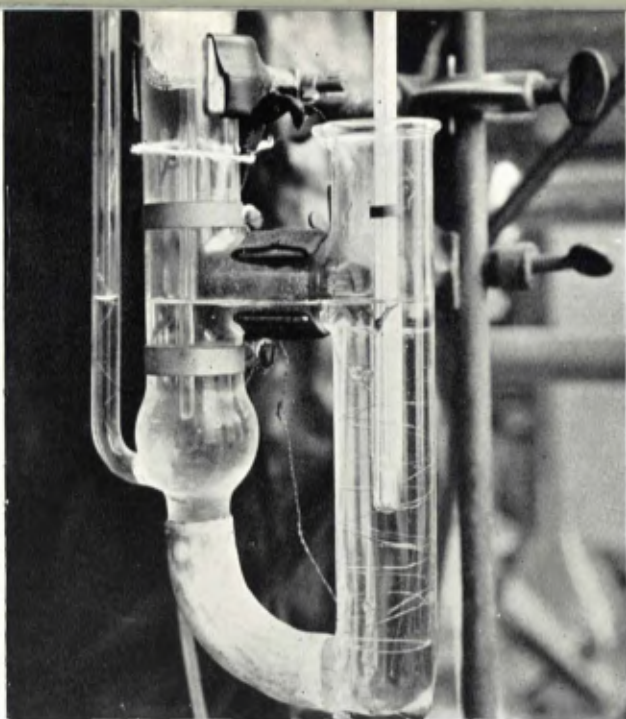
H. V. GRUBB, Ph.D. *Associate Professor*
H. C. WARD, Ph.D. *Associate Professor*
J. D. FLEMING, B.Ch.E. *Instructor*
C. A. MAYES *Mechanic*
MRS. EVA BROWNING *Secretary*

LEFT TO RIGHT: Ward, Grubb, Fleming, Ziegler, DallaValle, Newton, Lewis.



WM. MEESE NEWTON





A thermometer, a crystal, and close observation give the chemist an accurate melting point reading.

The chemist is truly the man-behind-the-scenes in paving the way for greater progress throughout the realms of industry and manufacturing.

Chemistry at Georgia Tech has been in the basic curriculum since the early days of the university's existence. Completion of the undergraduate program leads to a Bachelor of Science degree and in addition, masters and doctorate work is offered. The doctorate degree is offered in the fields of organic, physical, inorganic, and analytical chemistry.

The Chemistry curriculum is especially attractive to those who are uncertain of the field in which they wish to major, since there are a number of electives which permit a student to later change to other fields, even medicine, dentistry, or law.

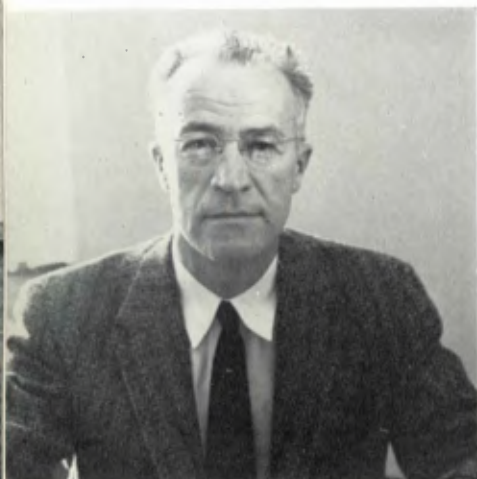
School of CHEMISTRY

WILLIAM M. SPICER, Ph.D.	Professor
Director of School	
WILLIAM H. EBERHARDT, Ph.D.	Professor
HENRY L. EDWARDS, Ph.D.	Professor
JACK HINE, Ph.D.	Professor
BENJAMIN B. WROTH, Ph.D.	Professor Emeritus
JACK K. CARLTON, Ph.D.	Associate Professor
LOYD D. FRASHIER, Ph.D.	Associate Professor
JAMES K. GLADDEN, Ph.D.	Associate Professor
ERLING GROVENSTEIN, JR., Ph.D.	Associate Professor
JAMES A. KNIGHT, JR., Ph.D.	Associate Professor
HENRY M. NEUMANN, Ph.D.	Associate Professor
R. FRED SESSIONS, Ph.D.	Associate Professor
JAMES A. STANFIELD, Ph.D.	Associate Professor

ALLAN C. TOPP, Ph.D.	Associate Professor
THEODORE I. BIEBER, Ph.D.	Assistant Professor
JOHN R. DYER, Ph.D.	Assistant Professor
NORMAN H. HORTON, M.S.	Assistant Professor
J. T. WATERS ROSS, M.S.	Assistant Professor
DONALD J. ROYER, Ph.D.	Assistant Professor
HOWARD W. HAWORTH, M.S.	Instructor
PAUL B. LANGFORD, M.S.	Instructor
DAVID A. MATHEWES, JR., M.S.	Instructor
ALBIN F. TURBAK, M.S.	Instructor
EDWIN G. VASSIAN, M.S.	Instructor
HARRY K. GRANT	Machinist
MRS. W. C. THIBADEAU	Chemical Technician
MRS. MARSUE D. CROW	Secretary

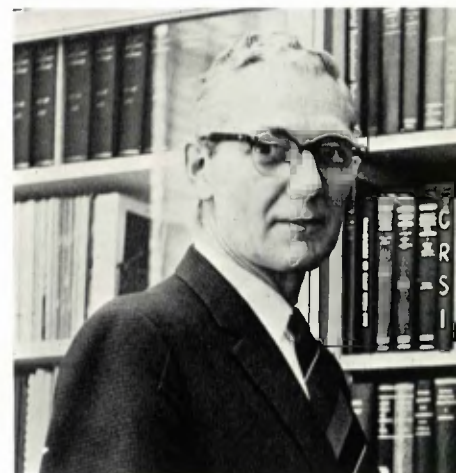
WILLIAM M. SPICER

FIRST ROW: Spicer, Gladden, Ross, Hine. . . . SECOND ROW: Dyer, Grovenstein, Knight, Bieber, Royer, Eberhardt. . . . THIRD ROW: Horton, Sessions, Topp, Stanfield, Frashier.





LEFT TO RIGHT: Peavy, Stiemke, King, Burtcasom, Fincher, Paquette, Bates, Schutz, Grune, Lucas, Jones, Sowers, Carstens, Kindsvater, Mazanti, Eichler.



ROBERT E. STIEMKE

ROBERT E. STIEMKE, M.S., C.E.	<i>Professor</i>
Director of School	
CARL E. KINDSVATER, M.S.	<i>Regents' Professor</i>
MARION R. CARSTENS, Ph.D.	<i>Professor</i>
JOHN O. EICHLER, M.S.	<i>Professor</i>
RICHARD KING, M.S.	<i>Professor</i>
RADNOR J. PAQUETTE, M.S.	<i>Professor</i>
GEORGE F. SOWERS, M.S.	<i>Professor</i>
AUSTIN B. CASEMAN, M.S.	<i>Associate Professor</i>
WERNER N. GRUNE, Dr. Eng. Sc. . . .	<i>Associate Professor</i>
JAMES H. LUCAS, M.S.	<i>Associate Professor</i>

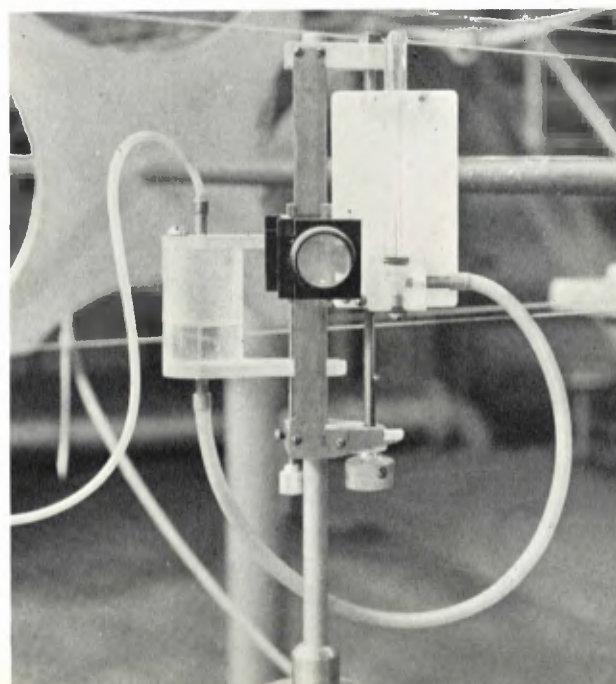
FREDERICK W. SCHUTZ, JR., Ph.D. . . .	<i>Associate Professor</i>
DON B. JONES, M.S.	<i>Assistant Professor</i>
BILLY B. MANZANTI, M.S.	<i>Assistant Professor</i>
JAMES R. FINCHER	<i>Instructor</i>
RAJA M. BITAR	<i>Graduate Assistant</i>
ROBERT T. DOOLEY, JR.	<i>Graduate Assistant</i>
RICHARD T. DOUTY	<i>Graduate Assistant</i>
HOMER J. BATES	<i>Technician</i>
C. M. PAVEY	<i>Technician</i>
MRS. ELEANOR R. KLUGE	<i>Secretary</i>
MRS. VIRGINIA B. BRAXTON	<i>Clerk-Typist</i>

School of CIVIL ENGINEERING

Civil engineering is the oldest of the engineering professions. The civil engineer coordinates the resources of nature, man, and machines toward a goal of better living. In recent years, civil engineering at Georgia Tech has undergone spectacular changes to meet the challenges of today and tomorrow. New materials, new methods of design and construction, and the need for applying basic methods to new or modernized industries have demanded a more rigorous application of the scientific approach.

The civil engineer works in the broad fields of structural design, construction, hydraulics, sanitary engineering, transportation, soils engineering, surveying, and photogrammetry. The school has new modern laboratories covering all these specialties, and in addition to the undergraduate program offers masters and doctorate degrees.

In hydraulics and fluid mechanics as well as highway engineering, the civil engineer works extensively.





BENJAMIN J. DASHER



SEATED, FIRST ROW: Dasher, McDaniel. . . . SECOND ROW: Hurd, McKinley, Weston, Hagedorn. . . . THIRD ROW: McKune, Wilson, Fielder, Wallace. . . . FOURTH ROW: Bailey, Perkins, Su, White, Witt. . . . STANDING: Hammond, Meadows, Hawthorne, Nottingham, Hutchison, Finn, Berry.

BENJAMIN J. DASHER, Sc.D.	Professor
Director of School	
FRANK O. NOTTINGHAM, JR., Ph.D.	Professor
DOMENICO P. SAVANT, M.S., E.E.	Professor Emeritus
JOHN TAYLOR, Ph.D.	Professor
EDWARD R. WESTON, M.S.	Professor
DAVID L. FINN, Ph.D.	Associate Professor
F. KENNETH HURD, Ph.D.	Associate Professor
HOWARD L. MCKINLEY, M.S., E.E.	Associate Professor
WILLIAM J. MCKUNE, Ph.D.	Associate Professor
EDWARD E. PERKINS, M.S.	Associate Professor
ASHFORD W. STALNAKER, E.E.	Associate Professor
JOHN M. BAILEY, JR., M.S.	Assistant Professor
DANIEL C. FIELDER, M.S., E.E.	Assistant Professor
JOSEPH L. HAMMOND, M.S.	Assistant Professor
GEORGE B. HAWTHORNE, JR., M.S.	Assistant Professor

PAUL T. HUTCHISON, M.S.	Assistant Professor
KENDALL L. SU, Ph.D.	Assistant Professor
JOHN M. WALLACE, JR., M.S.	Assistant Professor
THOMAS M. WHITE, M.S.	Assistant Professor
ROBERT S. DUGGAN, JR., M.S.	Lecturer
EARL W. MCDANIEL, Ph.D.	Lecturer
SAMUEL N. WITT, JR., M.S.	Lecturer
NICHOLAS J. EXARCHOU, M.S.	Instructor
ARTHUR HAGEDORN, B.S. in E.E.	Instructor
HENRY E. MEADOWS, JR., M.S.	Instructor
JACK C. WILSON, M.S.	Instructor
MRS. EVELYN L. JOHNSON	Secretary
MRS. MARJORY M. STREET	Secretary
RALEIGH M. FORD	Mechanic
EULIE H. HOTCHKISS	Technician

School of ELECTRICAL ENGINEERING

Through such small wires is conducted that mysterious element which is harnessed by electrical engineers.



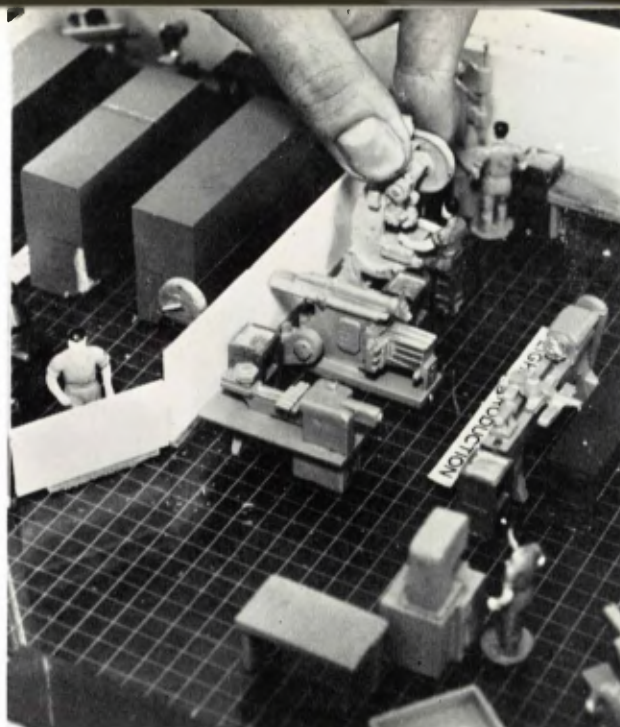
Because of the ever-increasing use of electric power and due to new developments in communication and sound reproduction, our rapidly advancing electronic and atomic age calls upon the electrical engineer for more new ideas and theories than he has ever before been called upon to produce. His job opportunities are many and varied.

The curriculum at Tech includes comprehensive training in the fundamental sciences. As a senior, however, the student in electrical engineering has an option to specialize in either electronics and communications or electrical power engineering. In either option, though, courses of other departments are required in order to give the graduate a broader aspect of the ever-advancing world about him. A degree of Bachelor of Electrical Engineering is attained after satisfactory completion of four years of study.

Due to the ever-increasing rise in the number and efficiency of machines and manufacturers, along with the increased emphasis on rapid production, the demand for industrial engineers is now the highest ever. The field of the industrial engineer is that of the production expert engaged in the planning, organizing, improving, managing, and operating of the various processes for producing all types of manufactured products.

To meet the need of industry for this new kind of engineer, the School of Industrial Engineering was formed at Tech. The first degree was awarded in 1946.

A student in the I. E. Department must possess leadership ability and sound judgment as well as knowledge of a technical nature. Upon the completion of a four-year course, the student is designated a Bachelor of Industrial Engineering.



Industrial engineers of the future experiment with models to compare the efficiencies of plant layouts.

School of INDUSTRIAL ENGINEERING

FRANK F. GROSECLOSE, M.S.	<i>Professor</i>
Director of School	
WILLIAM N. COX, JR., M.M.E.	<i>Professor</i>
JOSEPH KROL, Ph.D.	<i>Professor</i>
ROBERT N. LEHRER, Ph.D.	<i>Professor</i>
JOSEPH J. MODER, JR., Ph.D.	<i>Professor</i>
WINFIELD A. BROOKS, M.S.	<i>Associate Professor</i>
JOHN H. MACKAY, Ph.D.	<i>Associate Professor</i>
ROCKER T. STATON, JR., Ph.D.	<i>Associate Professor</i>
R. N. TROWBRIDGE, M.A.	<i>Associate Professor</i>

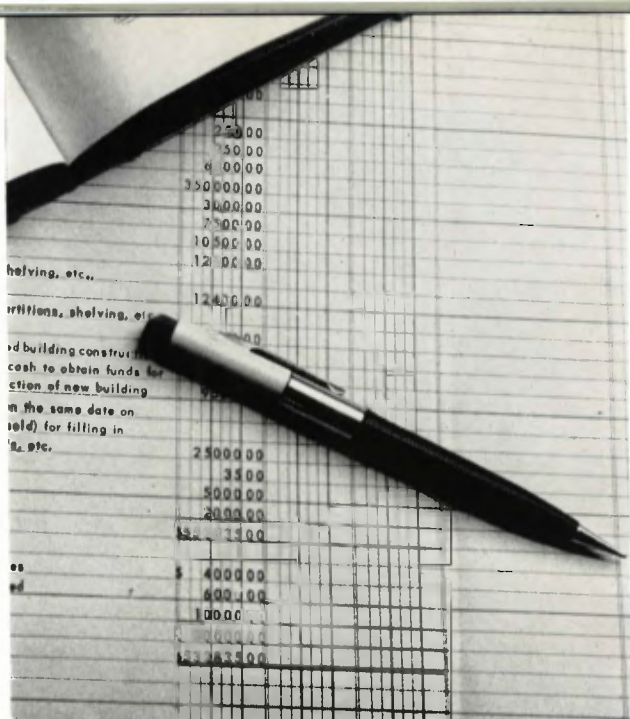
CECIL G. JOHNSON, B.I.E.	<i>Assistant Professor</i>
JOHN B. DAY, B.S.	<i>Lecturer</i>
PAUL T. EATON, Ph.D.	<i>Lecturer</i>
ROBERT E. ESKEW, M.S.	<i>Lecturer</i>
TEE H. HIETT, JR., B.S.	<i>Lecturer</i>
MARTIN B. ROBERTS, B.I.E.	<i>Lecturer</i>
W. L. TREADWAY, B.S.	<i>Lecturer</i>
JACK R. WALKER, B.S.	<i>Lecturer</i>
WILLIAM G. DYER	<i>Technician</i>
MRS. BERNICE G. FOWLER	<i>Secretary</i>

LEFT TO RIGHT AROUND TABLE: Walker, Krol, Brookes, Day, Johnson, Eaton, Lehrer, Groseclose, Staton, Hielt, MacKay, Roberts, Trowbridge, Moder.



FRANK F. GROSECLOSE





The tools of the Industrial Management student are used to prepare himself for a managerial future.

school of INDUSTRIAL MANAGEMENT

MAURICE R. BREWSTER, M.B.A. Professor
Director of School
JOHN L. FULMER, Ph.D. Professor
ALPHEUS R. MARSHALL, Ph.D. Professor
WILLIAM J. PROCTOR, M.A. Professor
NOAH WARREN, M.A. Professor
FRED B. WENN, M.A. Professor
ERNEST W. ALDREDGE, M.A. Associate Professor
J. CARLTON BROWN, B.C.S. Associate Professor
WALTER S. BUCKINGHAM, JR., Ph.D. Associate Professor
GLENN W. GILMAN, Ph.D. Associate Professor
ROY A. JAMES, M.A. Associate Professor
SAMUEL THOMPSON, Ph.D. Associate Professor
E. R. BOLLINGER, M.S. Assistant Professor
JOHN T. ETHERIDGE, M.B.A. Assistant Professor
WILLIAM A. FLINN, M.B.A. Assistant Professor

GEORGE E. MADDOX, M.S. Assistant Professor
WARREN E. MOELLER, M.B.A. Assistant Professor
ANDREW JACKSON COOPER, III, M.S. Instructor
RALPH L. DAY, M.S. Instructor
JOSEPH E. KLING, M.B.A. Instructor
MARLIN V. LAW, M.S. Instructor
H. LYNN MILLER, M.S. Instructor
T. B. CHISHOLM, M.S. Special Lecturer
H. SELBY HILL, B.E.-E.E. Special Lecturer
ERNST W. SWANSON, Ph.D. Special Lecturer
HENRY L. ANDEL, B.S. Graduate Assistant
HUGH W. FOLK, B.S. Graduate Assistant
TOMMY P. HALL, B.B.A. Graduate Assistant
L. KENNETH PEET, B.B.A. Graduate Assistant
MRS. ANNE CHASTAIN, B.C.S. Secretary
MISS JEAN DEMPSEY Secretary

MAURICE R. BREWSTER

SEATED, FIRST ROW: Hill, Marshall, Brewster. . . . SECOND ROW: Moeller, Aldredge, James, Wenn. . . . THIRD ROW: Maddox, Proctor, Gilman, Etheridge. . . . STANDING: Flinn, Day, Buckingham, Patrick, Thompson, Kling, Miller, Brown, Bollinger, Warren, Cooper, Law.





FIRST ROW: Johnson, Nohel, Stallard. . . . SECOND ROW: Jayne, Furvis, Walker, Evans, Garrett, Drucker. . . . THIRD ROW: Holton, Sledd, Atchison, Redkevitch, Starrett, Line, Smythe. . . . FOURTH ROW: Brookes, Fulton, Vail, Martin, Immel, Currie. . . . FIFTH ROW: Kasriel, Syn, Kainen, Bailey.



HERMAN K. FULMER

H. K. FULMER, M.A.	Professor
Acting Director of School	
A. H. BAILEY, Ph.D.	Professor
C. W. HOOK, M.A.	Professor (Emeritus)
WALTER REYNOLDS, M.A. (Deceased)	Professor
M. B. SLEDD, Ph.D.	Professor
D. M. SMITH, Ph.D.	Professor (Emeritus)
A. L. STARRETT, M.A.	Professor
J. C. CURRIE, Ph.D.	Associate Professor
B. M. DRUCKER, Ph.D.	Associate Professor
W. B. EVANS, Ph.D.	Associate Professor
J. R. GARRETT, Ph.D.	Associate Professor
C. H. HOLTON, M.A.	Associate Professor
J. A. NOHEL, Ph.D.	Associate Professor
J. H. WAHAB, Ph.D.	Associate Professor
J. C. BROOKS, M.A.	Assistant Professor
A. E. FULTON, M.A.	Assistant Professor

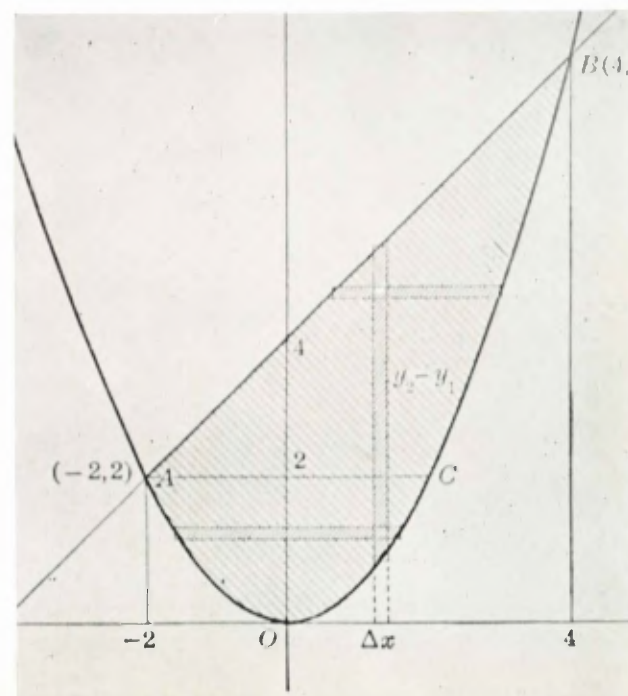
E. R. IMMEL, Ph.D.	Assistant Professor
R. D. JOHNSON, Ph.D.	Assistant Professor
R. H. KASRIEL, Ph.D.	Assistant Professor
J. P. LINE, M.A.	Assistant Professor
W. A. MARTIN, M.A.	Assistant Professor
C. T. PURVIS, M.A.	Assistant Professor
W. R. SMYTHE, JR., Ph.D.	Assistant Professor
FRANK W. STALLARD, Ph.D.	Assistant Professor
C. R. SWENSON, M.A.	Assistant Professor
J. R. VAIL, M.A.	Assistant Professor
J. W. WALKER, Ph.D.	Assistant Professor
J. W. WRAY, Ph.D.	Assistant Professor
G. A. YORK, M.A.	Assistant Professor
JOHN W. JAYNE, M.A.	Instructor
A. J. KAINEN, M.A.	Instructor
SHELBY SMITH	Secretary

school of MATHEMATICS

Through the School of Mathematics, the student of Georgia Tech is exposed to one of the oldest sciences known to man.

Throughout Tech's history, the School of Mathematics has been primarily a service department for the engineering schools. In recent years, however, this scope of service has been greatly extended. Formerly, it was limited almost entirely to the undergraduate program. Now, the service has been extended over the whole graduate program. For example, the number of advanced courses in mathematics now outnumbers three to one the number of undergraduate courses, despite the fact that every freshman and sophomore takes courses in the Math Department. Also the School of Mathematics offers both the B.S. and M.S. degrees in Applied Mathematics, provides an honors program, and arranges seminars and colloquiums in this field.

Every Georgia Tech student is at some time exposed to Calculus and the frustrating problems it presents.





HOMER S. WEBER



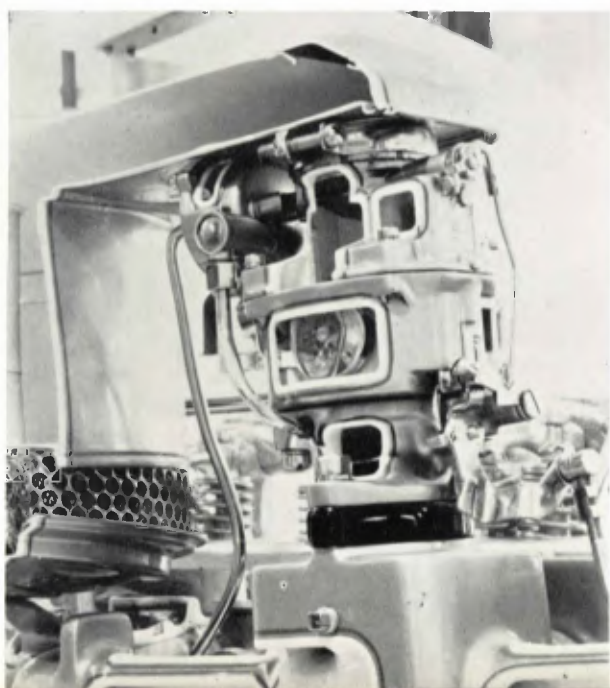
LEFT TO RIGHT, FIRST ROW: Hinton, Weber, Allen, Picha. . . . SECOND ROW: Holland, Goglia, Thomas, Ramirez, Vidosic. . . . THIRD ROW: Purdy, Harolson, Murphy, Foster, Gorton. . . . FOURTH ROW: Barnett, Sexton, Jackson.

HOMER S. WEBER, Ph.D.	<i>Professor</i>
Director of School	
MARIO J. GOGLIA, Ph.D.	<i>Regents' Professor</i>
ROBERT L. ALLEN, M.S.	<i>Professor</i>
WILLIAM B. HARRISON, III, Ph.D.	<i>Professor</i>
A. DINSMORE HOLLAND, M.S.	<i>Professor</i>
THOMAS W. JACKSON, Ph.D.	<i>Research Professor</i>
JOSEPH P. VIDOSIC, Ph.D.	<i>Professor</i>
HORACE O. FOSTER, M.S.	<i>Associate Professor</i>
CHARLES W. GORTON, Ph.D.	<i>Associate Professor</i>
OTTIS M. HARRELSON, M.S.	<i>Associate Professor</i>
WILLIAM A. HINTON, M.S.	<i>Associate Professor</i>
KENNETH G. PICH, M.S.	<i>Associate Professor</i>
RICHARD A. TROTTER, M.S.	<i>Associate Professor</i>

FRANK A. THOMAS, JR., M.S.	<i>Associate Professor</i>
S. C. BARNETT, M.S.	<i>Assistant Professor</i>
J. H. MURPHY, M.S.	<i>Assistant Professor</i>
R. P. RAMIREZ, M.S.	<i>Assistant Professor</i>
KENNETH R. PURDY, B.M.E.	<i>Instructor</i>
PHILLIP G. SEXTON, B.M.E.	<i>Instructor</i>
GEORGE Z. BONNER	<i>Shop Assistant</i>
JOHN W. DAVIS	<i>Shop Assistant</i>
JOSEPH G. DOYAL	<i>Shop Assistant</i>
MARVIN C. INGRAM	<i>Shop Assistant</i>
CLIFFORD R. BANNISTER	<i>Molder in Foundry</i>
THOMAS D. SANGSTER	<i>Mechanic</i>
MRS. ELSIE L. NORRIS	<i>Instrument Custodian</i>
MISS RITA HUDSON	<i>Secretary</i>

school of MECHANICAL ENGINEERING

The heart of the engine, its fuel injection mechanism, stands as a challenge to all automotive engine designers.



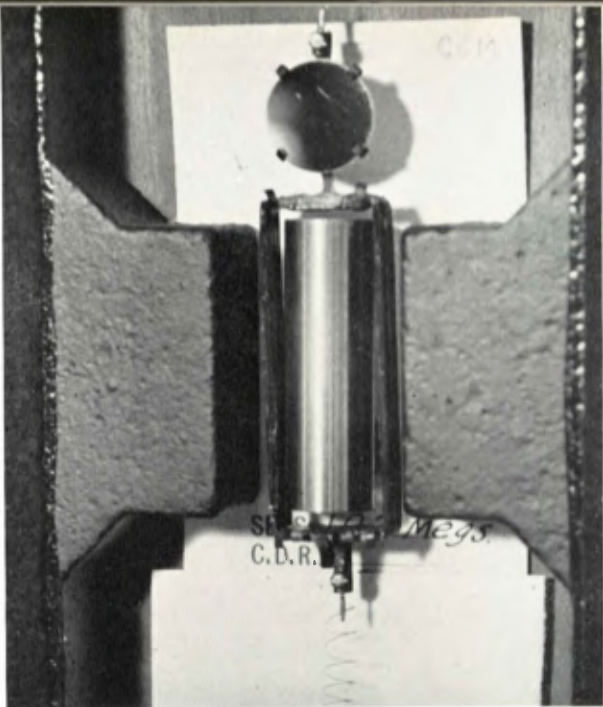
Since even before 1888, when the Mechanical Engineering Department was the sole degree-granting school of Georgia Tech, mechanical engineering has been a profession of utmost importance to the advancement of world civilization. Mechanical engineering embraces the science and art of the generation, transmission, and utilization of heat and mechanical energy, as well as the production of tools, machines, and their products.

There are no optional courses in Mechanical Engineering, but electives are provided so that a student might have some choice of subjects most suited to his individual desires. The curriculum is designed to provide the basis for future advancement of Mechanical Engineering graduates as professional engineers and as citizens.

The Pattern Laboratory has recently been converted to a research facility for the pursuit of projects by graduate students.

In every major department on the campus can be found varying examples of the far-reaching effects of physics. Physicists are no longer found only in laboratories and research stations; they are rapidly emerging to work side by side with engineers, especially with recent developments in the atomic power and guided missile fields.

Because physics is the foundation for engineering, all sophomore students at Georgia Tech are offered basic courses in physics. Four years of work in the School of Physics leads to a Bachelor of Science in Physics. The curriculum is designed to enable the student to select a career in either the practical aspects of physics or in the traditional scientific phases. In addition, advanced courses of study are offered on the master's and doctorate levels.



From the reflection cast by this reflection galvanometer, minute traces of electrical current can be measured.

school of PHYSICS

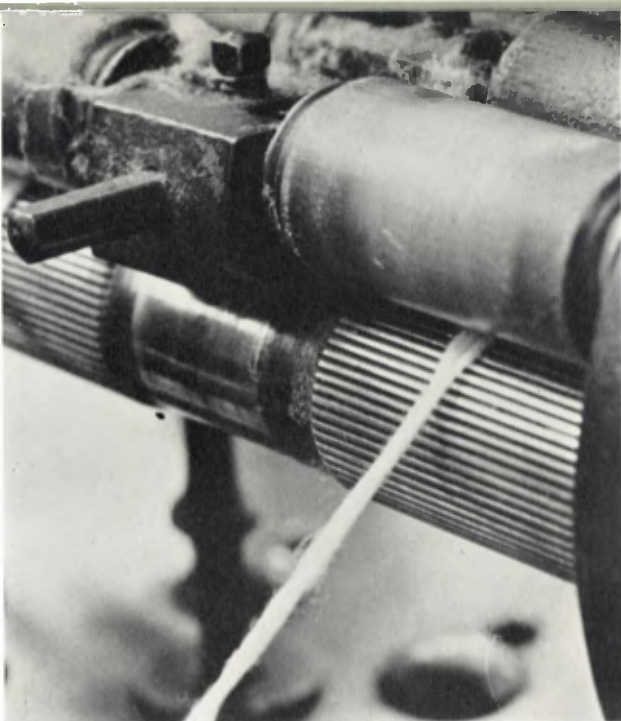
J. H. HOWEY, Ph.D.	Professor
Director of School	
V. CRAWFORD, Ph.D.	Professor
L. D. WYLY, Ph.D.	Professor
E. E. BORTELL, M.S.	Associate Professor
C. H. BRADEN, Ph.D.	Associate Professor
W. P. EWALT, M.A.	Associate Professor
H. M. HERREMAN, M.A.	Associate Professor
E. T. PROSSER, M.A.	Associate Professor
T. L. WEATHERLY, Ph.D.	Associate Professor
J. Q. WILLIAMS, Ph.D.	Associate Professor
M. L. MEEKS, Ph.D.	Associate Professor
W. C. SIMPSON, Ph.D.	Associate Professor

H. A. GERSCH, Ph.D.	Assistant Professor
On leave of absence	
W. K. PURSLEY, Ph.D.	Assistant Professor
J. R. STEVENSON, Ph.D.	Assistant Professor
O. B. WIKE, M.S.	Assistant Professor
E. L. BEESON, M.S.	Instructor
E. T. PATRONIS, JR., B.S.	Instructor
V. SHIEL, B.S.	Instructor
A. L. STANFORD, B.S.	Instructor
H. G. DULANEY, B.S.	Instructor
N. S. KENDRICK, M.S.	Instructor
A. E. ANDERSON	Mechanic
SYBIL PARKER	Secretary

FIRST ROW: Bortell, Wike, Simpson, Howey. . . . SECOND ROW: Prosser, Harrison, Dulaney, Wallace, Kendrick, Williams. . . . THIRD ROW: Braden, Wyly, Pursley, Beeson. . . . FOURTH ROW: Ewalt, Crawford, Stanford, Weatherly.

JOSEPH H. HOWEY





The intermediate roving process, elementary to the textile engineer, converts cotton roving into yarn.

The textile engineer supplies the creative talent and manufacturing genius necessary to carry out and further the advancing methods of fabric production and dying found in the South's oldest and largest industry, textiles. His work is widely diversified, covering in its scope the design, sales, chemical and technical aspects of the industry.

The A. French School of Textile Engineering, considered the most outstanding textile school in the nation, while constantly striving to produce the finest engineers to meet this ever-increasing challenge, offers the degrees of Bachelor of Textile Engineering and Bachelor of Science in Textiles. The former of the two degrees embodies the engineering phases of the industry, while the latter is divided into the Manufacturing Option and the Chemistry and Dyeing Option.

school of TEXTILE ENGINEERING

HERMAN A. DICKERT, A.B., M.A., Sc.D. . . . Professor
 Director of School
 CHARLES A. JONES, B.S. . . . Professor (Emeritus)
 JAMES L. TAYLOR, Ph.D. . . . Professor
 RALPH L. HILL, B.S., M.S. . . . Professor
 GERALD B. FLETCHER, B.S. . . . Associate Professor

J. W. McCARTY, B.S., M.S. . . . Associate Professor
 WILLIAM POSTMAN, Ph.D. . . . Associate Professor
 RALPH C. LATHEM, B.S., M.S. . . . Associate Professor
 BOMAR A. OLDS, JR., B.S. . . . Instructor
 MRS. W. V. SAGGUS, B.S. . . . Secretary

HERMAN A. DICKERT



LEFT TO RIGHT: Postman, Hill, Lathem, Dickert, Taylor, Olds, McCarty, Fletcher.





LEFT TO RIGHT, FRONT ROW: Smith, Mee, Durden, Hodson, Linthicum, Hilding, Bliss, Johns, Bragg, Ellis, Doyle, Narmore, Hill, Stoneking, Jacobs. . . . BACK ROW: Mandelker, Brown, Adams, Clark, Sheridan, Larson, Gray, Savage, Sterling, Wheby, Heim.



WILLIAM B. JOHNS

WILLIAM B. JOHNS, JR., M.S. *Professor*
 Director of Division
 BRYAN L. BROWN, M.S. *Professor*
 In Charge of Drawing
 FRANCIS M. HILL, M.S. *Professor*
 In Charge of Graduate Program
 ROY K. JACOBS, Ph.D. *Professor*
 JAKOB MANDELKER, Dr. Engr. Science *Professor*
 PHIL B. NARMORE, Ph.D. *Regents' Professor*
 FRANK BOGLE, M.S. *Associate Professor (Ret.)*
 FRANCIS C. BRAGG, M.S. *Associate Professor*
 JOSEPH C. DURDEN, JR., M.S. *Associate Professor*
 CHARLES E. STONEKING, Ph.D. *Associate Professor*
 JAMES H. ARMSTRONG, M.S. *Assistant Professor*
 JOHN C. CLARK, M.S. *Assistant Professor*
 ISHMAEL L. ELLIS, B.S. *Assistant Professor*
 FRANK M. ROWAN, B.S. *Assistant Professor (Ret.)*
 HARRY C. SAVAGE, JR., M.S. *Assistant Professor*
 ROBERT H. DOYLE, B.S. *Instructor*
 JAMES R. GRAY, B.S. *Instructor*
 EARL M. WHEBY, B.S. *Instructor*
 IRA E. WILKS, B.S. *Instructor*

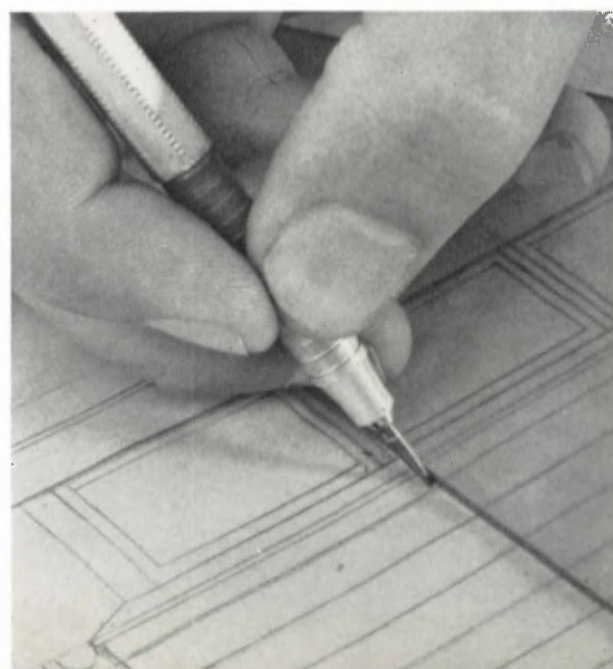
JOSEPH W. ADAMS, B.S., Captain, U.S.A. (Ret.) . . *Lecturer*
 WILLIAM C. BLISS, B.S., Colonel, A.U.S. (Ret.) . *Lecturer*
 JOHN P. EDGERLY, B.S., Colonel, U.S.A. (Ret.) . . *Lecturer*
 EVERARD H. HEIM, B.S., Lt. Comdr., U.S.N. (Ret.) *Lecturer*
 G. DEWEY HILDING, B.B., M.S., Lt. Comdr.,
 U.S.N. (Ret.) *Lecturer*
 FREMONT B. HODSON, B.S., Brig. General,
 U.S.A. (Ret.) *Lecturer*
 WILLIAM J. LARSON, B.S., Captain,
 U.S.N. (Ret.) *Lecturer*
 THEODORIC C. LINTHICUM, B.S., Captain,
 U.S.N. (Ret.) *Lecturer*
 FRANCIS J. MEE, B.S., M.S., Rr. Admiral,
 U.S.N. (Ret.) *Lecturer*
 JOHN W. MIDDLETON, B.S., Brig. General,
 U.S.A. (Ret.) (Deceased) *Lecturer*
 ARTHUR J. SHERIDAN, B.S., Colonel,
 U.S.A. (Ret.) *Lecturer*
 ROBERT H. SMITH, B.S., Rr. Admiral,
 U.S.N. (Ret.) *Lecturer*
 LEROY P. STERLING, M.S., Ph.B. *Lecturer*
 MARYJANE B. SIDERS *Secretary*

ENGINEERING DRAWING and MECHANICS

Required of every Georgia Tech graduate is the ability to express his ideas graphically and with accuracy.

No engineer receives full or adequate training without a knowledge of certain basic courses. Georgia Tech offers two such courses of instruction, Engineering Drawing and Mechanics, for the purpose of providing students with sufficient knowledge of these subjects to perform the services required of an engineer.

Engineering Drawing, while fortified by descriptive geometry, is designed to give all students the basic skill needed in making and understanding drawings and representing their ideas graphically. While on the other hand, Mechanics, which is concerned with forces and their effects in producing and changing and in altering shapes of bodies, is designed to give a foundation for the design and construction of machinery, structures, and bridges.





ANDREW J. WALKER



FIRST ROW: Foster, Adams, Benson, Spillman, Comer, Walker. . . . SECOND ROW: Hobgood, Ketchin, Almon, Chaikin, Folk, Mullen. . . . THIRD ROW: Young, Rainey, Hamrick, Banks, Sisson. . . . FOURTH ROW: Essary, Haman, Platt, O'Neill, Metcalfe. . . . FIFTH ROW: Murphy, Smith, Brown, Rueben, Reeves, Bergamo.

ANDREW J. WALKER, Ph.D. Professor
Head of Department
*LLOYD W. CHAPIN, M.A. Regents' Professor
HAL C. BROWN, A.B., M.A. Professor
EDWIN H. FOLK, A.B., M.A. Professor
GLENN W. RAINEY, A.B., M.A. Professor
HENRY W. ADAMS, A.B., M.A. Associate Professor
DAVID B. COMER, III, Ph.D. Associate Professor
EDWARD FOSTER, B.S., M.A. Associate Professor
JAMES B. HAMAN, A.B., M.A. Associate Professor
W. RICHARD METCALFE, A.B., M.A. Associate Professor
KARL M. MURPHY, Ph.D. Associate Professor
TOM F. ALMON, B.S., M.A. Assistant Professor
RALPH BERGAMO, A.B., M.A. Assistant Professor
MILTON CHAIKIN, Ph.D. Assistant Professor
A. FRANK HAMRICK, A.B., M.A. Assistant Professor
ALTON A. HOBGOOD, A.B., M.A. Assistant Professor

SAMUEL C. KETCHIN, A.B., M.A. Assistant Professor
WILLIAM B. MULLEN, Ph.D. Assistant Professor
JOHN P. O'NEILL, B.S., M.A. Assistant Professor
RALPH R. SPILLMAN, A.B., M.A. Assistant Professor
RICHARD WIEGAND, A.B., M.A. Assistant Professor
JAMES D. YOUNG, Ph.D. Assistant Professor
ROY E. AYCOCK, A.B., M.A. Instructor
ROBERT L. BANKS, A.B., M.A. Instructor
JOHN B. BENSON, A.B., M.A. Instructor
WM. J. DEMPSEY, A.B., M.A. Instructor
JOHN W. PLATT, JR., A.B., M.A. Instructor
HALBERT A. REEVES, A.B., M.A. Instructor
LARRY J. RUEBEN, Ph.D. Instructor
JAMES E. SISSON, B.S., B.S. in Ed., M.S. Instructor
ROBT. J. SMITH, A.B., M.A. Instructor
MRS. MARY NELL IVY, A.B., M.A. Drama Director
HELEN AUCLAIR Secretary

department of ENGLISH

Shown is an excerpt from the ILIAD; this classic epic initiates the student's education in classic literature.

The Iliad

BOOK I

SING, goddess, the wrath that
the ruinous wrath that
ians woes innumerable, and
many strong souls of heroes
be a prey to dogs and all
counsel of Zeus wrought
from the day when first
of men and noble Achilles

The student seeking competence in highly specialized fields must also develop the wider perspectives now required of the professional man.

At Georgia Tech the Department of English shares the responsibility for providing the education that gives a student breadth and perspective, self-mastery, enriched understanding, and generous sympathies, as well as the ability to express clearly his own ideas and to understand and judge the ideas of others. In all its offerings—whether in communication or in the humanities; the department is conscious of its obligation to aid in the development of well-educated men and women.

The department teaches required courses to all freshmen and sophomores and eighty per cent of the juniors in addition to offering elective courses for a large number of upper classmen.

The sophomores schedule indoor sports, consisting usually of basketball; outdoor sports, which include softball and touch football; and recreative sports, which consist of volleyball and paddleball.



To the aspiring or the training athlete, the timer's watch stands as the champion that can never be defeated.

department of PHYSICAL TRAINING

LYLE B. WELSER, B.S., M.A.	Professor
FRED R. LANOUE, B.S., M.A.	Professor
NORRIS C. DEAN, B.S.	Associate Professor
JOE H. PITTARD, B.S.	Associate Professor

JOHN C. HYDER, B.S.	Assistant Professor
TOMMY PLAXICO, B.S.	Assistant Professor
J. H. MCAULEY, B.S.	Assistant Professor
JOHN T. FOSTER, M.A.	Assistant Professor
BYRON A. GILBREATH, M.Ed.	Assistant Professor
D. B. SINCLAIR	Clerk
MISS BETTYE JO HICKMAN, B.B.A.	Secretary

LEFT TO RIGHT: Welser, Dean, Lanoue, Plaxico, Coleman, Foster, Pittard, McAuley, Hyder.



ARTHUR M. COLEMAN





LEFT TO RIGHT: Wright, Campoamor, Ervin, Lewald, Walker.

JAMES D. WRIGHT, A.B., M.A., Ph.D. . . *Professor*
 Head of Department
 ROBERT M. ERVIN, A.B., M.A.,
 Dipl. du Prof. *Professor*
 JOSEPH A. CAMPOAMOR, A.B., M.A., LL.B. . *Professor*
 GEORGE F. WALKER,
 B.S., A.B., M.A. *Associate Professor*
 HERALD E. LEWALD, A.B., M.A. *Instructor*
 ROBERT T. HINTON *Secretary*

The primary purpose of the Department of Modern Languages is to give the student the sufficient mastery of a foreign language necessary to enable him to read and understand with reasonable facility the scientific and technical literature of that language. Further, it seeks to inform the student, through the medium of foreign language, of the civilization and literature of the countries in which the language is spoken, and as a result produce a much broader understanding of the world and its problems.

department of SOCIAL SCIENCES

department of MODERN LANGUAGES

The well-informed engineer must have a broad background of general training in fields not specifically technical, such as a study of the far-reaching problems of our complex modern society. Courses offered by the Department of Social Sciences represent fundamental elements for understanding people. These are drawn from the fields of history, government, sociology, economics, and philosophy. The main objective of the department is teaching students to understand human relations, thus making it an integral part of the program of general education.

GEORGE HENDRICKS, Ph.D. . . *Associate Professor*
 Acting Head, Social Sciences Department
 GLENN N. SISK, Ph.D. *Professor*
 ROBERT SCHARF, Ph.D. . . . *Associate Professor*
 EDWARD A. GASTON, JR., M.A. *Assistant Professor*
 ROBERT S. LORCH, M.A. . . . *Assistant Professor*
 NAHUM Z. MEDALIA, Ph.D. . . *Assistant Professor*
 ELMO M. ROBERDS, Ph.D. . . . *Assistant Professor*
 WILLIAM RODEMANN, M.A. . . *Assistant Professor*
 JOHN E. TSOUDELOS, Ph.D. . . *Assistant Professor*
 MELVIN ECKE, Ph.D. *Lecturer*
 R. BAINE HARRIS, M.A. *Lecturer*
 GAINES W. WALTER, Ph.D. . . . *Lecturer*
 WILLARD E. WIGHT, M.A. . . . *Lecturer*
 MRS. JOYCE OWENS CONNALLY . . . *Secretary*

SEATED: Lorch, Tsouderos, Sisk, Hendricks, Scharf, Gaston. . . . STANDING: Rodeman, Medalia, Wight, Roberds.





LEFT TO RIGHT: Cannon, Wyckoff, Fetner, Ingols.

HUGH A. WYCKOFF, M.S. *Professor*
 Head of Department
 ROBERT S. INGOLS, Ph.D. *Professor*
 ALBERT E. CANNON, M.S. . . . *Associate Professor*
 ROBERT FETNER, Ph.D. *Assistant Professor*
 JOHN W. LEMON, M.S. *Special Lecturer*

All industries today must be concerned with the problems of health and sanitation, both industrial and environmental. Students entering industry need a knowledge of these problems and the modern techniques used by governmental and industrial agencies in the solution of them. The Department of Public Health and Biology offers courses on the sophomore, junior, and senior levels, although most courses are offered on the graduate level. Available are courses in biology, anatomy, bacteriology, and human physiology, as well as sanitation and industrial hygiene.

department of PSYCHOLOGY

department of PUBLIC HEALTH and BIOLOGY

The philosophy of the Department of Psychology, established in 1945 as a service unit, has been to stress the importance of the human factor in all phases of engineering and management. An attempt has been made to make the students sensitive to the whole man, his attitude, his feelings, his fears, and his desire for recognition and security. Through these courses the human element takes its rightful place among the factors which make up the fine engineer or industrial manager.

JOSEPH E. MOORE, Ph.D. (on leave) . . . *Professor*
 Head of Department
 EDWARD H. LOVELAND, Ph.D. . . *Assistant Professor*
 Acting Head of Department
 M. CARR PAYNE, JR., Ph.D. . . . *Assistant Professor*
 RICHARD P. MOLL, M.A. . . . *Assistant Professor*
 MRS. NANCY STEWART *Secretary*

SEATED: Loveland. . . . STANDING: Moll, Payne.





The men who will pilot such aircraft for the defense of our country are trained in the detachment at Tech.

The Air Force Reserve Officers' Training Corps is the newest of the Georgia Tech ROTC units. It was re-established on the campus in 1950 after being non-existent since 1927. It was originally established in 1921 as one of seven such units throughout the nation. Its purpose is to select and prepare students to serve as officers in the Regular and Reserve components of the United States Air Force, and upon graduation from Tech, participating students are commissioned as Second Lieutenants in the Air Force.

The generalized course of instruction begun in 1953 is now in operation throughout the four Air Science courses. It has received minor modification to emphasize leadership, knowledge, and air power concepts. This past year the Air Force ROTC took co-op students for the first time.

AIR FORCE ROTC

WILLIAM R. ROBERTSON, Jr., Col., USAF	PAS
BENJAMIN C. WILLIS, Lt. Col., USAF	Assistant PAS
PHILIP G. DEMURO, Major, USAF	Assistant PAS
FRANK C. HERRON, Major, USAF	Assistant PAS
PAUL REYNOLDS, Jr., Major, USAF	Assistant PAS
ALFRED M. FIRTH, Capt., USAF	Assistant PAS
KAY W. KROEPSCH, Capt., USAF	Assistant PAS
LIONEL V. PATENAUDE, Capt., USAF	Assistant PAS
ROY O. SLOAN, Jr., Capt., USAF	Assistant PAS
WALTER C. STEVENS, Capt., USAF	Assistant PAS
WALTER H. OTT, 1st Lt., USAF	Assistant PAS

JOHN R. CRUTSINGER, M/Sgt., USAF	Supply NCO
CLAUDE B. DOBBS, M/Sgt., USAF	Senior Clerk
CLARENCE W. TILL, M/Sgt., USAF	Senior Clerk
BURREL C. YEAGER, M/Sgt., USAF	Adm. Assistant
EDWIN F. CROCKER, T/Sgt., USAF	Supply NCO
MURREL C. DAVIS, T/Sgt., USAF	Senior Clerk
RAYMOND S. ELKIN, T/Sgt., USAF	Senior Clerk
LEONARD W. MILENDER, T/Sgt., USAF	Senior Clerk
RICHARD P. HEIMERICH, S/Sgt., USAF	Senior Clerk
MRS. DOLORES C. CATHEY	Secretary

COL. W. R. ROBERTSON



LEFT TO RIGHT, FIRST ROW: Stevens, Patenaude, Robertson, DeMuro, Firth. . . . SECOND ROW: Kroepsch, Reynolds, Milender, Crocker, Sloan. . . . THIRD ROW: Ott, Dobbs, Till, Yeager, Crutsinger, Herron. . . . FOURTH ROW: Elkin, Heimrich, Davis.





FIRST ROW: Anderson, Bradford, Roberts, Curren, Holly, Harris. . . . SECOND ROW: Millican, Morgan, Ringenbach, Sudnich, Boake, Jones, Beganie, Gillentine, Lawrence. . . . THIRD ROW: Greenwood, Malici, Eldridge, Butler, Strope, Wright, Austin, Cole. . . . FOURTH ROW: Rowe, Brennan, Cooper, Fraser, MacKay, Rentz, Masters.



COL. W. F. CURREN

WILLIAM F. CURREN, JR., Col.,
Arty., B.S. . . . *Professor of Military Science and Tactics*
BARTON L. HARRIS, Lt. Col., C.E., B.S. . . . *Assistant Professor*
GEORGE J. HOLLY, JR., Lt. Col.
Ord. C., B.S. . . . *Assistant Professor*
VITALY KOVALEVSKY, Lt. Col., Inf., B.S. . . . *Assistant Professor*
KEITH M. ROBERTS, Lt. Col., Arty., B.S. . . . *Assistant Professor*
ROBERT K. BRADFORD, Major,
Cml. C., B.S. . . . *Assistant Professor*
WARREN S. ANDERSON, Capt., C.E., B.S. . . . *Assistant Professor*
HENRY R. BEGANIE, Capt.,
Arty., B.S. and M.A. . . . *Assistant Professor*
CORWIN BOAKE, JR., Capt., Inf., B.S. . . . *Assistant Professor*
WILFRED H. DRATH, Capt., Inf., B.S. . . . *Assistant Professor*
LUNCEFORD P. GILLENLINE, Capt.,
Sig. C., B.S. . . . *Assistant Professor*
BARTLEY J. GREENWOOD, JR., Capt.,
Arty., B.S. and M.S. . . . *Assistant Professor*
HOMER H. JONES, Capt., Inf., B.S. . . . *Assistant Professor*
WILLIAM W. MILLICAN, Capt.,
Ord. C., B.A. . . . *Assistant Professor*
FRANK P. RINGENBACH, JR., Capt.,
Inf., B.S. . . . *Assistant Professor*
NORMAN E. SUDNICK, Capt.,
Cml. C., B.S. . . . *Assistant Professor*

NEWTON B. MORGAN, 1st Lt., Sig. C., B.S. *Assistant Professor*
WILLIAM E. LOOMIS, CWO, U.S.A. . . . *Adjutant*
WILLIAM J. RENTZ, M/Sgt., Arty. . . . *Assistant Instructor*
NATHAN A. ROWE, M/Sgt.,
RA Unasgd. . . . *Assistant Instructor*
LEO F. BRENNAN, Sfc., RA Unasgd. . . . *Assistant Instructor*
HARRY E. BUTLER, JR., Sfc.,
RA Unasgd. . . . *Assistant Instructor*
CHARLES G. FRASER, Sfc., Inf. . . . *Assistant Instructor*
DONALD MACKAY, Sfc., RA Unasgd. . . . *Assistant Instructor*
WARREN G. MASTERS, Sfc.,
RA Unasgd. . . . *Assistant Instructor*
JOSEPH R. MILICI, Sfc., Sig. C. . . . *Assistant Instructor*
SYLVESTER W. STROPE, Sfc.,
RA Unasgd. . . . *Assistant Instructor*
THOMAS L. WRIGHT, Sfc., RA Unasgd. . . . *Assistant Instructor*
CECIL M. COLE, Sgt., RA Unasgd. . . . *Assistant Instructor*
JOHN O. COOPER, Sgt., RA Unasgd. . . . *Assistant Instructor*
JOHN M. ELDRIDGE, Sgt., RA Unasgd. . . . *Assistant Instructor*
JAMES M. AUSTIN, Spl., RA Unasgd. . . . *Assistant Instructor*
HERBERT L. ELLIS, M/Sgt.,
USA, Ret. . . . *Assistant Military Property Custodian*
THELMA H. KITCHENS . . . *Secretary*
BARBARA S. MADDOX . . . *Secretary*
MILDRED W. NORTON . . . *Secretary*

ARMY ROTC

A high-explosive artillery projectile is made more effective with the installation of a controlling element.

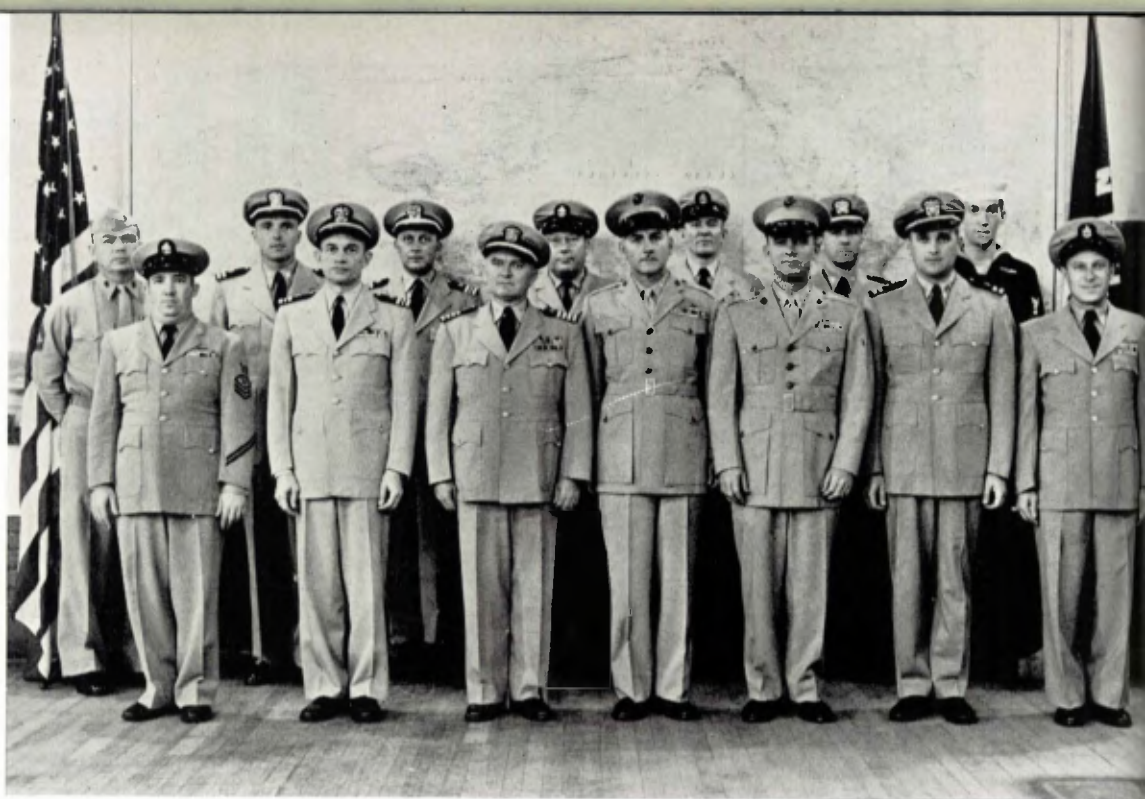
The Army Reserve Officers' Training Corps, the oldest ROTC unit at Tech, was established in 1917. Since then it has been supplying the Army with junior officers in the Chemical Corps, the Signal Corps, the Antiaircraft Artillery, the Infantry, the Ordnance Corps, and the Corps of Engineers.

The Army ROTC stresses military leadership training by offering the courses necessary to make a good Army officer. The basic course, taken in the freshman and sophomore years, is a general knowledge course. The advanced course, taken during the junior and senior years, is concerned with specialization in one of the six offered branches. Upon completion of four years of military science and graduation from Tech, the cadet is commissioned in the United States Regular Army or Organized Reserves.





CAPT. L. R. LAMPMAN



LEFT TO RIGHT: Hamilton, Beddingfield, Koach, VanKeuren, Roberts, Lampman, Herndon, Robertson, Hughey, Miller, Hereford, Hibson, Trimble, Greenberg.

L. R. LAMPMAN, Capt., USN . . . *Professor of Naval Science*
Commanding Officer
 A. N. B. ROBERTSON, LTCOL, USMC . . . *Associate Professor*
Executive Officer
 WILLIAM T. MILLER, Major, USMC . . . *Assistant Professor*
 WAYNE L. ROBERTS, LCDR, USNR . . . *Assistant Professor*
 MATTHEW S. VANKEUREN, LCDR, USNR . . . *Assistant Professor*
 JAMES D. HEREFORD, JR., LT (Supply Corps), USN . . . *Assistant Professor*
 JOHN H. KOACH, LT, USN . . . *Assistant Professor*

LEO A. HIBSON, JR., LT, USN . . . *Assistant Professor*
 VANDER T. HAMILTON, MSgt., USMC . . . *Instructor*
 PAUL R. GARDNER, QMC, USN . . . *Instructor*
 SHERMAN M. HUGHEY, GMC, USN . . . *Instructor*
 IRVING GREENBERG, SKC, USN . . . *Instructor*
 SAM W. BEDDINGFIELD, YNCA, USN . . . *Instructor*
 JOHN J. PICA, YN1, USN . . . *Instructor*
 CHARLES E. TRIMBLE, JR., FT1, USN . . . *Instructor*
 MRS. MARGARET H. POWELL . . . *Secretary*
 MISS BONNIE R. SCROGGS . . . *Secretary*

NAVY ROTC

The helmsman's speed indicator, in spite of nuclear power and the jet age, still remains a Naval standby.



Since 1926, the Naval Reserve Officers' Training Corps at Georgia Tech has been supplying the Navy with Ensigns and the Marine Corps with Second Lieutenants. The NROTC student is obligated to take four years of Naval Science courses and during his junior and senior years applies for his choice of three options: a Naval Line Officer, a Supply Corps Officer, or a Marine Corps Officer.

Some of the men in the NROTC unit are attending Georgia Tech on Government scholarships under which the Navy pays almost all of their expenses. Most of the students are men selected among candidates for NROTC by the Professor of Naval Science to fulfill the quota established by the Bureau of Naval Personnel for the particular year.