

# THE WHISTLE

## Campus Phone Upgrades Continue

**B**ellSouth, Lucent Technologies (formerly AT&T Network Systems) and the Department of Administrative Services (DOAS) are adding a new central office switch in order to improve Tech's current routing system. The upgrade is scheduled to take place March 15-18.

During this time, Georgia Tech customers may experience minimal disruption, but all campus numbers should be fully operational Monday, March 18.

Employees who experience difficulty between March 18-22 should call the OIT Customer Support Center at 894-7173. After March 22, service calls should be directed to the DOAS service desk at 656-0000.

This phone upgrade also involves the swap of proprietary phones (Meridian) to AT&T ISDN sets. The insert in this edition of *The Whistle* explains ISDN technology, as well as step-by-step instructions for using the new ISDN phones. All employees currently using a Meridian p-phone will receive these new sets.

## Tech Participates in Statewide Telecourse

**T**he Ivan Allen College of Management, Policy and International Affairs is working with colleges and universities around the state to provide an interdisciplinary, intercultural view of the "Impact of the Olympic Movement." Impact, a joint project of Georgia Public Television and the University System of Georgia, will be broadcast to 19 colleges and universities across Georgia every Tuesday and Thursday evening between March 28 - May 30.

The telecourse will address several themes including the relationship between sports and international conflict, philosophical shifts from exclusion to inclusion and the internationalization of sports and competition using varied historical, political, sports management and anthropological perspectives.

"There are only a few places around the country and internationally that are taking an academic look at the Olympic movement, and among those our program seems to take the broadest approach to surveying the Olympics past, present and future," said David Bruce, director, international program development, Ivan Allen College.

Participants can select from 19 sessions ranging from "Sports and Ideology: From Berlin 1936" to "The Bid Process and Financing the Games" to the "Future for the Olympic Movement." The program is designed to accommodate undergraduate, continuing education and single session students. Members of the Tech community are invited to attend one or more sessions free of charge.

The telecasts will originate from the GPTV studio and be broadcast to Room 212 of the Engineering Science and Mechanics Building, every Tuesday and Thursday, between 7:00 - 8:30 p.m. Audience members will have an opportunity to fax and/or e-mail questions and comments to topics experts during the broadcast.

The first topic "The Ancient Games: History of Greek Goals/Values and Roman Adaptions" is scheduled for March 28. The course will be taught by Carole Moore, assistant vice president of student services and adjunct professor in the School of History, Technology, and Society. Moore, who usually teaches ancient Greek and Roman history, said she is excited about the opportunity of focusing on the Olympic component.

Other Tech representatives participating in the series are Daniel Papp, professor in the School of International Affairs and executive assistant to the president; Bernadette McGlade, senior associate athletic director, Georgia Tech Athletic Association; Malcolm MacKenzie, administrative director and associate professor in International Sports Business & Economics, and William Long, associate professor, School of International Affairs. For a complete list of topics, please call Dave Bruce at 894-4453.

## Tech's National Acclaim Continues

**G**eorgia Tech continues to attract national acclaim from peers, practitioners and publishers alike. Graduate school rankings released today by *U.S. News & World Report* rank Georgia Tech graduate education among the nation's elite in a number of disciplines and number one in industrial engineering and computer science graphics interaction.

Tech's College of Engineering returned to the top 10 in the nation, ranking third by professional engineers, fourth among public schools and ninth overall. The College's industrial/manufacturing program was again the top program of its kind in the country and Tech's Aerospace Engineering program was ranked fifth nationally for the third consecutive year.

"I am pleased the College of Engineering ranked in the Top Ten," said Dr. John A. White, dean, College of Engineering, "but I am even more pleased that practicing engineers ranked us third nationally and our fellow academics ranked us eighth. However, graduate students do not come to Georgia Tech to major in engineering," observed White, "they come to major in particular engineering fields. For that reason, I am delighted that industrial engineering again ranked first and aerospace engineering ranked fifth in the country."

Georgia Tech's College of Computing was ranked within the nation's elite as well. The College's computer science program ranked eighth among public universities and 18th overall. The Graphics, Visualization and Usability Center ranked first

nationally among all public and private universities.

"The College of Computing has shown consistent and dramatic improvement, since our founding in 1990," said Dean Peter A. Freeman. "The investment that Georgia Tech made in us six years ago is truly beginning to pay off. We've been on the bleeding edge of technology for many years," said Freeman. "But what distinguishes Georgia Tech is our continual focus, not only on the technology, but on the individual as well. We are trying to shape a future in which computers improve the quality of daily life, and I'm pleased that our peers throughout the country recognize our role in that effort."

The *U.S. News* graduate rankings follow a series of undergraduate and graduate school rankings from a variety of sources. Georgia Tech has scored consistently well in those rankings as well.

*The Fiske Guide to Colleges*: four star rating, one of the 42 best buys in the nation;

*Money Magazine*: second among all public schools, sixth in quality of incoming students, 15th overall;

*U.S. News & World Report* (undergraduate rankings): sixth in academic reputation among public schools, 10th in public universities, 42nd overall, third in engi-

neering, 25th in business;

*Computerworld Magazine*: ninth in technology MBA among all public universities and 13th overall;

The National Academy of Sciences National Research Council (graduate school rankings): first in industrial engineering, ninth in aerospace engineering, 13th in electrical engineering and 17th in civil engineering.

"Today's rankings affirm earlier analysis," said President Wayne Clough. "Georgia Tech has become one of the premier educa-



"The rankings game in higher education can be a very subjective one, but the breadth of our recognition and the continual improvement in the quality of our programs provides Georgia Tech with a legacy of achievement that we very much look forward to continuing."

tional institutions in the United States. From the National Academy of Sciences to *Computerworld Magazine* to *U.S. News & World Report*, the Georgia Institute of Technology is consistently ranked within the top tier of universities," said Clough. "The rankings game in higher education can be a very subjective one, but the breadth of our recognition and the continual improvement in the quality of our programs provides Georgia Tech with a legacy of achievement that we very much look forward to continuing."

## Tech Professor Winning Awards and Influencing Students

Amy Fraser  
Communications

**T**he National Science Foundation (NSF) recently awarded Mark Guzdial, assistant professor, College of Computing, a CAREER grant to further his research in "Integrating Programming into Engineering Education." The award was granted under a new NSF program designed to encourage the development of academic faculty as both educators and researchers.

The beauty of the CAREER award, said Anne C. Petersen, deputy director of NSF, is that it reinforces the double advantage of supporting discoveries and supporting the education of the next generation.

Guздial's research hinges on the principal that educators should

prepare students for life in a learning society. "My goal is to provide students the same kinds of opportunities that professional scientists and engineers have for learning and exploring through computation," said Guздial.

To help ensure that this goal is achieved, Guздial has designed educational software utilizing scaffolding and context-setting methods. Scaffolding, explains Guздial, is the process of teaching an activity and facilitating learning and context-setting is using an application to give value to a problem. a modeling method similar to an apprenticeship.

Guздial says his reason for applying these methods to engineering is two-fold: 1. Because

there is a critical need for engineers who can learn, and 2. the Tech community offers ready access to engineering educators who are willing to explore innovative methods. "When our engineering students enter the workplace, they will find that organizations as a whole need to learn, and that individuals who can learn are highly valued," Guздial explained.

Two applications of Guздial's research are the Collaborative and Multimedia Interactive Learning Environment (CaMILE) and a computer driven learning environment designed to support student collaboration and (DEVICE).

See CAREER, page 2





Course/Seminar



Conference/Speaker



Meeting



Concert



Art Exhibit



Play/Show



Sporting Event



Campus Holiday



Commencement



International



Health/Medical



Special Events

## Continual Calendar



**EduTech Lunch and Learn Series on Helping**

**Students Learn from Problem and Project-based Experience** meets every Wednesday at noon in Student Center, Room 319. For more information, contact Wendy C. Newstetter at 894-9219 or [wendy@cc.gatech.edu](mailto:wendy@cc.gatech.edu).



**Culture Break**, held in Room 117 of the Student Services building, is an

opportunity for faculty, staff and students to enjoy sights and sounds from around the globe. The first Spring quarter Culture Break, scheduled for April 5 from 3:00 - 4:00 p.m., will be hosted by the Arab Student Association. For more information, contact Linda Duckworth, ISSP, at 894-7475.



Printed on recycled paper



## WHISTLE

Bob Harty.....Publisher  
Amy Fraser.....Editor-in-Chief  
David Arnold.....Managing Editor  
David Kennedy.....Staff Writer  
Susan McDaniel.....Staff Writer  
Victor Rogers.....Staff Writer  
Gary Meek.....Photographer  
Stanley Leary.....Photographer  
Yaniv Adir.....Photo Technician

Publication is weekly throughout the academic year. Deadline is Thursday 5:00 p.m. 11 days before publication date. Address: Communications, mail code 0181 (Wardlaw Center, 177 North Avenue), 894-8324. Tech computer users may file news items with the Communications office by sending electronic mail addressed to [whistle@www.gatech.edu](mailto:whistle@www.gatech.edu).

The Whistle is available as a resource on the Georgia Tech Network. ACME users simply type "gopher" at the standard UNIX prompt. Look in the "Daily News Section" and you will see The Whistle. All others can connect to the standard campus gopher server on port 2048. For assistance with gopher, contact the Office of Information Technology Help Desk at 894-7173.

Cost/\$350 Copies/4,500

Georgia Tech Communications  
Wardlaw Center  
177 North Avenue  
Atlanta, Georgia 30332-0181

Georgia Tech is a unit of the University System of Georgia.

## MARCH 18



**Interaction Management, Part V** will be held in the Coliseum Annex, Room 302 (the HRD training room) from 12:30 - 4:30 p.m. For registration information, contact Wansley Stallworth at 894-2249.

## MARCH 19



**Meeting Management, Part I**, will be held in the HRD training room from 8:30 a.m. - 1:00 p.m. For registration information, contact Wansley Stallworth at 894-2249.

## MARCH 20



**Performance Procedures and Counseling**, will be held in the HRD training room from 8:30 a.m. - 12:30 p.m. For registration information, contact Wansley Stallworth at 894-2249.

## MARCH 21



**Productivity/Time Management Skills**, will be held in the HRD training room from 8:30 a.m. - 12:30 p.m. For registration information, contact Wansley Stallworth at 894-2249.



The Georgia Tech **Women's Forum** presents a March brownbag luncheon, featuring Vikki Locke, from the STAR 94 morning show. All faculty and staff are encouraged to attend. The luncheon will be held in the Student Center Ballroom, beginning at noon. Drinks and dessert will be provided. Reservations are required. To find out more, call Rekha Patel at 894-1272.

## MARCH 22



**Interaction Management, Part VI** will be held in the HRD training room from 8:30 a.m. - 12:30 p.m. For registration information, contact Wansley Stallworth at 894-2249.

## MARCH 26



**Violence in the Workplace** will be held in the HRD training room from 8:30 a.m. - 12:30 p.m. For registration information, contact Wansley Stallworth at 894-2249.



**Meeting Management, Part II** will be held in the HRD training room from 8:30 a.m. - 1:00 p.m. For registration information, contact Wansley Stallworth at 894-2249.

## MARCH 27



**Coaching Skills** will be held in the HRD training room from 8:30 a.m. - 12:30 p.m. For registration information, contact Wansley Stallworth at 894-2249.



**Cholesterol Screening**  
The PEACH program is offering a blood test screening for faculty/staff from 6:45 a.m. - 9:00 a.m. in the SAC auxiliary gym. The profile includes Cholesterol, HDL, LDL, Triglycerides, Glucose, Iron, Calcium and 20 other blood chemistry tests. The charge is \$19. For more information, call PEACH at 894-0352.

## MARCH 28



**Humor in the Workplace** will be held in the HRD training room from 8:30 a.m. - 12:30 p.m. For registration information, contact Wansley Stallworth at 894-2249.

## MARCH 30



**The President's Scholarship Program** is sponsoring a special recruiting beginning at 1:00 p.m., in the Student Center. Representatives from academic, social and professional organizations

will be in attendance. To find out more, contact Randy McDow at 894-1615 or [mcdow@prism.gatech.edu](mailto:mcdow@prism.gatech.edu).



New York City Opera National Company presents **"La Traviata"**. Performed in Italian with English supertitles. Performance time is 8:00 p.m. Admission for faculty and staff is \$38. The student price is \$10, with ID. For more information, contact the Center for the Arts at 894-9600.

## APRIL 2



The faculty of the Program on "The Information Revolution: Its Current and Future Consequences" presents **"Convergence or Divergence: Winning in the New Media,"** featuring H. William Ebeling Jr., the national director of Convergence Services at Deloitte & Touche LLP, from 4:00 - 6:00 p.m. in the Clary Theater, which is located in the Bill Moore Student Success Center. A reception will follow the presentation. To RSVP, call 894-1401 by March 28.

Please submit all calendar items to [whistle@www.gatech.edu](mailto:whistle@www.gatech.edu), 11 days prior to desired publication date.

## PEOPLE

## AEROSPACE ENGINEERING

The American Institute of Aeronautics and Astronautics awarded **Dr. Ben T. Zinn** the Propellants and Combustion Award for 1996. The award honors him for "outstanding contributions to understanding of rocket instabilities and pulse combustion development and being among the first to realize its full potential in industrial processes."

Zinn, the David S. Lewis Jr. Chair and Regents' Professor, is a professor in the School of Aerospace Engineering with a joint appointment in the George W. Woodruff School of Mechanical Engineering. Earlier this year the American Society of Mechanical Engineers (ASME) named Zinn a Fellow, and last year the National Academy of Engineering (NAE) elected him to membership.

Zinn came to Georgia Tech in 1965 after completing his Ph.D. studies in aeronautical engineering and mechanical science at Princeton University. He attained the rank of Regents' Professor in 1973, and the Lewis Chair in 1992. Zinn also is a Fellow of the American Institute of Aeronautics and Astronautics and an Honorary Professor at Beijing University of Aeronautics and Astronautics in Beijing, China. His fields of research have included: combustion instabilities in rocket motors, ramjets, and jet engines; oscillatory flames; reacting flows; soot formation; acoustics; and pulse combustion.

## COLLEGE OF ARCHITECTURE

**Mark Cottle**, visiting professor in the College of Architecture, has been selected as the Steedman Fellow in Architecture at Washington University in Saint Louis.

His design was selected from among 85 entries in the international design competition. The project involved the design of a gallery for American minimal art, sited on Lago Maggiore in Italy.

The Steedman Fellowship, founded in 1925, is administered every two years and provides for nine months of travel abroad. Cottle plans to use the fellowship to study the work of Pierre Jeanneret, Laurie Baker, and Antonin Raymond in India.

Cottle was trained in architecture at Rice University and Harvard and was a 1991 Dinkelloo Fellow to the American Academy in Rome.

## DID YOU KNOW

## HOME PARK LEARNING CENTER (HPLC)

The Home Park Learning Center, a licensed, private, non-profit child care center located just off 10th Street near Georgia Tech, is in need of toddler beds, outside toys, swimming pools, and other fun toys for the Olympic Games. Please call 404/872-4572 to donate or drop in to visit the facility.

## LOGISTICS INSTITUTE

The Administrative Service Committee is currently seeking nominations for the 1996 Administrative Service Award.

The \$1,500 award and a plaque will be presented at the Faculty and Staff Honors Luncheon, Thursday, May 23.

The ideal nominee should have significant achievements contributing to the fulfillment of the Tech mission.

Candidates should be regular, full-time employees with one or more years service and winners within the last 10 years are not eligible.

For more information, contact freida at 894-2343 or [freida.breazeal@isye.gatech.edu](mailto:freida.breazeal@isye.gatech.edu).

## CAREER, continued from page 1

CaMILE is a computer-driven browser that facilitates active learning by providing a forum for student commentary and discussion. DEVICE is simulated environment in which engineering students construct models and solve real world problems. Both can be accessed at <http://www.cc.gatech.edu/gvu/people/Faculty/Mark.Guzdial.html>.

Guzdial came to Georgia Tech in the fall of '93, after receiving his Ph.D. in education and computer science (a joint degree) at the University of Michigan. He is a member of the Graphics Visualization and Usability Center and the Cognitive Science program.

FY '95 CAREER Program grants were awarded to 337 recipients. NSF received 1,735 proposals. Grants are about three to five years in duration and range from \$70,000 to \$300,000.

For a complete list of FY '95 CAREER grant recipients and their projects, see <http://www.nsf.gov/crossdir/award/start.htm>.



# Meet Bill Leslie: 38 Year Tech Veteran

**Full Name:** William Franklin Leslie

**Age:** 61

**Occupation:** associate registrar

**Years at Tech:** 30+

**Current Professional Project(s):** GIT project manager for implementation of BANNER SIS (Student Information Systems)

**Education:** B.S., M.S. in industrial management at Georgia Tech.

**Marital Status:** married to Dianne for 38+ years

**Children:** 3 boys, 3 daughters(in-law) and 6 grandchildren (5 girls and 1 boy)

**Favorite Book:** *When All The World Was Young*, Ferrol Sams

**Favorite Movie:** "The Sound of Music"

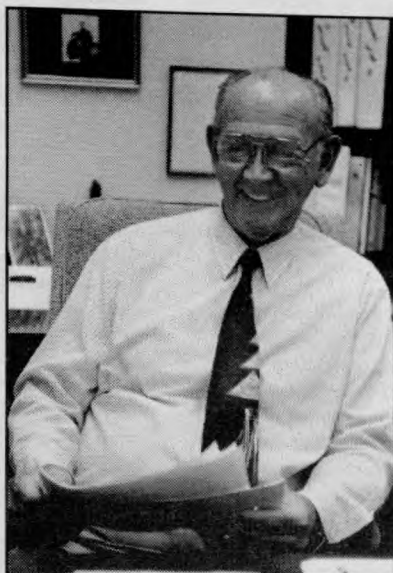
**Few People Know I:** Got married on Christmas Day and two days later traveled from Georgia to Texas with my new bride - each driving a separate vehicle

**Best Advice Ever Received:** There is no such thing as security - Only opportunity

**Personal Hero or Heroine and Why:** My dad, because of his love for family and what he taught me concerning work ethics

**When I Was Little I Wanted to Be:** An automotive mechanic

**What Brought You to Georgia Tech?** Jim Wohlford (Director Emeritus, Co-op Division) and a desire to move back South from the cold winters in Indiana



Bill Leslie, associate registrar, has a lot to smile about as he enjoys his last days in his current post. a Leslie will be retiring this month after almost 40 years of service to Georgia Tech.

Photo by Stanley Leary, Georgia Tech Communications

## CAMPUS MAIL

In an effort to successfully orchestrate Tech's mail services during the Summer of '96, the Georgia Tech Post Office will operate in two primary location during the Olympic period. The Student Center Post Office will be utilized to process incoming and outgoing departmental mail. The second location will be a temporary facility at 811 Marietta Street (The Printing & Photographic Center is located on the first floor of the building). The Post Office will occupy the second floor and will primarily process student mail at this location. In addition, a mail vehicle will serve the buildings in the Research Controlled Area for departmental deliveries and pick up of outgoing mail. We will deliver and pick up mail in the Village Secure Zone and Research Controlled Area once each day.

Although the Marietta Street location will be used primarily to process student mail, the Post Office is anticipating that some departments will have a need to use this facility as a pick up/drop off point due to security constraints and the lack of mobility on campus.

In order to meet your needs and establish a good mail distribution and processing system, Tech representatives will need to know the location and needs of all employees. The Office will be sending correspondence within the next two to three weeks asking each department to specify these needs.

Representatives ask each department/unit head to assist them in this effort, so they can provide the best possible service to before, during and after the Olympic Games.

## ACCREDITATION

All employees who need access to the Village Secure Zone (VSZ) and/or the Venue Zones should have received official Accreditation Center scheduling information during the week of March 11. All eligible employees who have, should contact their department's Olympic planning representative immediately. Employees working in the Research Controlled Area (RCA) are not required to report to the Accreditation Center.

Transportation to the Center will be provided for all employees who report during their assigned time. Employees unable to report within this time period can attend a make-up processing session between April 15 - June 30. Transportation will not be provided during the make-up session.

Employees will be required to provide a photo I.D. when they arrive at the Center. Also, promptness is requested. ACOG processing will take approximately one hour.

For more information, please contact your Olympic planning representative or call Tony Chan at 894-0429.

*Editor's note: Olympic-related questions should be directed to Ashley Gigandet at 894-3648 or ag37@prism.gatech.edu. Employees and students may also post their questions at git.olympics.official.*

# Awareness Key to Crime Prevention

Although Georgia Tech officials have taken responsibility to employ security measures to protect the community, the cooperation and involvement of all faculty, staff and students is essential to a successful campus safety program. The following is an excerpt of a recent *Whistle* interview with Police Chief Jack Vickery. Within it he shares insights concerning property theft and gives information about standard police procedures.

**Q. What can employees do to discourage property theft above and beyond locking their office door (if they have one)?**

**A.** Property of value should always be secured when unattended. Locking the door when one leave is the first and often the most effective line of defense. Securing the property inside the office in locked cabinets, locked desk drawers or with a good security device is also recommended.

In general, awareness, being alert for strangers in the area, being inquisitive when circumstances or persons appear abnormal for their area, and reporting suspicious activity to the police all decrease the risk of becoming a victim of a crime.

**Q. How often do the Tech Police recover stolen property?**

**A.** Small items are seldom recovered. Large items that have serial numbers are recovered more often. During 1994, the reported value of property stolen on campus was \$800,149. Recoveries were valued at \$180,191.

**Q. What procedure should an employee follow when they suspect criminal activity?**

**A.** Employees should notify the Georgia Tech Police Office directly at 894-2500, whenever they suspect any type of criminal activity.

**Q. What procedure does your office follow after a crime is reported?**

**A.** The procedures will vary somewhat depending upon the seriousness of the crime, but generally a patrol officer will be dispatched to do a preliminary investigation and report. If the offender is not apprehended at the scene, that preliminary report will be sent to an investigator.

If there is property stolen, and the information of make, model and serial numbers are available, that information will be entered into the National Crime Information Center (NCIC) computer system. Depending on the nature of the offense, information and evidence available that may provide a chance of solvability, the investigator will follow-up in an effort to identify the person(s) responsible for the offense. If the information and evidence is sufficient to identify the offender(s) and prove all the elements of the crime, and considering the wishes of the victim, the case against the offender will be presented to the Fulton County courts for prosecution. If the offender is an employee or student, the appropriate Institute administrators will also be notified so they may take any administrative disciplinary action needed.

**Q. What types of situation/s warrant the involvement of outside law enforcement agencies?**

**A.** Offenses and offenders often cross jurisdictional lines. Sharing of information, receiving and providing assistance and resources to other police agencies is routine and essential.

*Editor's note: The Crime Prevention Unit of the Georgia Tech Police Department prepares and distributes brochures on rape awareness, general crime prevention, harassing phone calls and general police information. They also sponsor the "Operation Identification," a program that allows participants to register, engrave and inventory all valuables. To take advantage of any or all of these resources, call the Crime Prevention Unit at 894-9960.*

# Industry Leaders and Tech Academics Unite



Dean John White, College of Engineering, met with Michael Splinter, Corporate Vice President and General Manager for Component Manufacturing, February 27, following Splinter's presentation on "Semiconductor Manufacturing and Value Added Automation."

Intel, the world's largest semiconductor company, is getting plugged into manufacturing at Georgia Tech. Michael Splinter, Intel's corporate vice president and general manager for component manufacturing, visited campus recently to share his insights on "Semiconductor Manufacturing and Value Added Automation."

Hosted by the George W. Woodruff School of Mechanical Engineering and the Manufacturing Research Center, the seminar was well attended by an array of faculty and students. Splinter also met with faculty and campus executives to discuss possible research initiatives.

"This visit was intended to broaden Intel's relationship with Georgia Tech," said Steven Danyluk, director of the Manufacturing Research Center, "specifically in the field of manufacturing."

Corporate partnerships not only encourage research projects, he said, they also provide programs for student growth. "Intel has been a generous provider of fellowships to Georgia Tech graduate students to assist them in their last year of study. They have also helped to supply Georgia Tech laboratories with equipment," explained Danyluk.



## CLASSIFIED ADS

## APPLIANCES

Panasonic Palmcorder. Excellent condition, hardly used. Asking \$400. Call Vance at 286-1625 or e-mail vance@peanuts.parking.gatech.edu.

1994 cellular phone. Like new, with case, a/c adapter and user manual. \$125 o.b.o.. No service contract connected. Call Richard at 224-1962.

## AUTOMOBILES

1990 Volvo 740GL. Automatic, am/fm, cassette, AC, sunroof, power lock, leather interior. Great condition. Asking 8,500 obo. Call 894-9614 or 770-552-8029.

1986 Honda Prelude, blue, 5 speed, sunroof, one owner, good condition, 116,000 miles, \$3900. Contact Angela at (404) 816-3369 or angela.ogletree@pod.gatech.edu.

1989 Toyota Camry DX, auto, ps, pb, tilt, AM/FM cassette, A/C, just serviced, non-smoker, very reliable, \$5,600. Call 894-1180 (day) or 770-972-5847 (evenings).

1988 Mercury Tracer station wagon. Red. Very clean, good condition, 100,000 miles. \$1,000. Call R. A. Karam at 894-3620.

1988 Toyota Camry Station Wagon, silver, 4-door, good condition, 137,000 miles, \$3,500 o.b.o. (770) 926-9339.

1989 Plymouth Voyager, 1991 engine w/43,000 miles. New transmission, tires,

brakes, shocks, etc. \$5.5K call 404-874-2303

## COMPUTERS

Zeos Pantera P90, 16MB RAM, 540MB Hard drive, 2MB VRAM Diamond Stealth, 14.4 internal modem, 15" SVGA color monitor, very nice 1 year old system. \$3,000. Leave message Allison 892-3178.

## FURNITURE

Chippendale sofa, cream and pale blue with a touch of peach, very good condition, approximately 6 ft. long, originally \$1,200. Will sell for \$300. Please call 894-3411 and ask for Francine.

Matching sofa and love seat (blue), square coffee table, 2 end tables, and 2 lamps. 10 months old, like new, \$800 (o.b.o.) Call Laura 894-5392 or laura.olson@cont-ed.gatech.edu

King-size waterbed. Excellent condition w/heater and headboard. Asking \$200. Call Vance at 286-1625 or e-mail vance@peanuts.parking.gatech.edu.

Black and brass "horn-legged" living room tables: 1 coffee table, 2 lamp tables, all with glass tops. Call Ann at 894-7578 or e-mail ann.jaudon@vpss.gatech.edu

Drawing Table, excellent condition. \$150 (negotiable). Call Dee-Dee at 894-2777 or e-mail deede.cox@registrar.gatech.edu.

## REAL ESTATE

For rent: Spacious 1 bdrm. apartment in the Mayfair; available June-1 October, 1996. Convenient midtown location. Walk to Tech. Fully furnished, complete kitchen, washer/dryer, A/C. \$1,200/month. Contact Lars at stixrude@perovskite.eas.gatech.edu or (404) 894-1992.

For sale by owner - 2 bdrm., 2.5 bath townhome. Fireplace w/ gas starter, wet bar, privacy fenced back yard, refrig to stay, gas stove. Energy efficient, ceiling fans throughout. Quite subdv in Lithonia conv to I-20 and Marta. A must see - \$63,500. Call Candy at 770-593-1839

Townhouse for sale. Fee simple, Avondale/Decatur area, on MARTA 2 master suites w/ private baths, L/D room, fireplace w/ gas logs, 1/2 bath, breakfast nook, walk-in pantry, screened-in porch, private wooded back yard, monitored security system, garage, and basement storage. \$83,900. Please contact Debbie at 894-3600 (w) or 262-5242 (h).

Looking for female roommate as of early May/June. Pet welcome. \$400+utilities; in large 2bdrm. townhouse, fireplace, separate baths, 5 minutes from Tech. Contact Stefanie at 894-5352 or stefanie.scott@modlangs.gatech.edu.

Grant Park, 2 bdrm., 1 bath renovated bungalow. New exterior paint, rocking chair front porch, security system, expandable attic, fenced backyard, 10 ft ceilings,

Cent. air/heat hardwood floor allowance. \$98,000 negotiable. Please call Eric at 624-3038 or e-mail at et@cc.gatech.edu

Emory/CDC area 4-bdrm., formal living and dining room, large kitchen with breakfast area, family room w/fireplace, high-tech security system, perennial garden, antique rose garden and much more. Location also convenient to Tech. Asking 189,900. Call Eva at 894-2823 or 404-636-6282.

For Sale: townhome, Tucker/Jimmy Carter area. 3 bdrm., 2.5 bath, 1,250 square feet, fireplace, galley kitchen, tennis, pool, newly painted, energy efficient, quiet wooded neighborhood, nice association community - access to I-85 and I-285. \$69,999. Call Vikki 894-9564 or 636-8449.

Needed: house to rent (year lease) 3-4 bedrooms, have pets - fenced yard preferred. Call Terry Jones at 894-2233.

## MISCELLANEOUS

Wanted: Someone to do light/medium yard work at a home in Southwest Atlanta area. I will supply tools and materials. Must have transportation. Saturdays only. Serious Please call 404/696-3342 after 6:00 p.m. Serious inquiries only.

Free beautiful black Siamese cat named Angel to loving home, shiny short hair with yellow eyes, 1 year old has shots and health records. Call Anna 894-4635.

For sale: 3DO System, three games (which include Shockwave, Fifa Soccer, The Need for Speed and an extra controller. Contact Katherine at 894-5322/770-473-1841 or katherine.brown@etri.gatech.edu.

For sale: Werner 40-foot Ladder, type II \$175 (770) 641-2862 leave message.

Easy Glider exercise machine. Used twice. \$30 Please contact Janie at 894-4416.

Mountain bike - 1995 GT All Terra Outpost trail. Never used. Size 18". 21 speeds. Color - Red. Shimano rapid fire plus. Alloy rims. Quick release front frame. Alloy seat tube - rest of bike steel. Retail price: \$335, Sale price: \$165. Contact Audrey Rasch at (404) 355-9876.

Free: small dog and rabbit. Both have cages. Please call Gennal at 894-4760 if you can provide a good home for either animal.

Florida vacation package, good any time through the end of August. Tickets to Sea World in Orlando, Busch Gardens Tampa Bay, and Adventure Island water park (Tampa), rental car and two-night accommodations. Retail value \$800, will take \$335 or best offer. Contact Patrick O'Hefernan 894-6894

Employees may e-mail classified ads to whistle@www.gatech.edu. Please limit submissions to 30 words. Questions should be directed to Amy Fraser at 894-8324.



Stephon Marbury (3) and Matt Harpring (15) led the Yellow Jackets to an 87-74 victory over Clemson in the last regular season game. Tech finished first in conference play and second in the ACC Tournament. They now head south to Orlando to begin their quest for the NCAA Championship.

Photo by Stanley Leary, Georgia Tech Communications

Non-Profit  
Organization  
U.S. Postage  
PAID  
Atlanta, GA  
Permit No. 1137

THE WHISTLE

THE GEORGIA INSTITUTE OF TECHNOLOGY HOME OF THE 1996 OLYMPIC VILLAGE VOL. 19, No. 78 - MARCH 18, 1996





# ISDN TECHNOLOGY, GEORGIA TECH, AND YOU

## What it's all about...

On March 18, 1996, Georgia Tech joins top universities around the country such as Duke, Harvard, Cal Poly, University of Michigan, University of Virginia, University of Wisconsin, and Appalachian State University in making ISDN — Integrated Services Digital Network — a key basis for their telecommunications foundation.

### So what?

The "what" is that ISDN technology — which permits the simultaneous transmission of voice, data, images and video — positions Georgia Tech to take full advantage of the evolving applications that are becoming the new working tools of the Information Age.

ISDN is a digital technology, that is, it's a technology based on the language used by computers. So one can see that ISDN automatically places Georgia Tech squarely into the mainstream of the communications revolution that daily increases in pace and brings more and more remarkable technological tools into play.

A good way to understand ISDN is to look at what it does for users. For years, the telephone was the primary information tool on the desktop. During the last two decades, new technologies have been competing for space on that desktop: phone sets, personal computers, modems, facsimile machines, audio cassette recorders, calculators and answering machines. Although telecommunications will not replace all this technology, ISDN goes a long way to clean off the desktop. That's because it can integrate the functions of a variety of information tools into one total system, which can allow users to be more efficient.

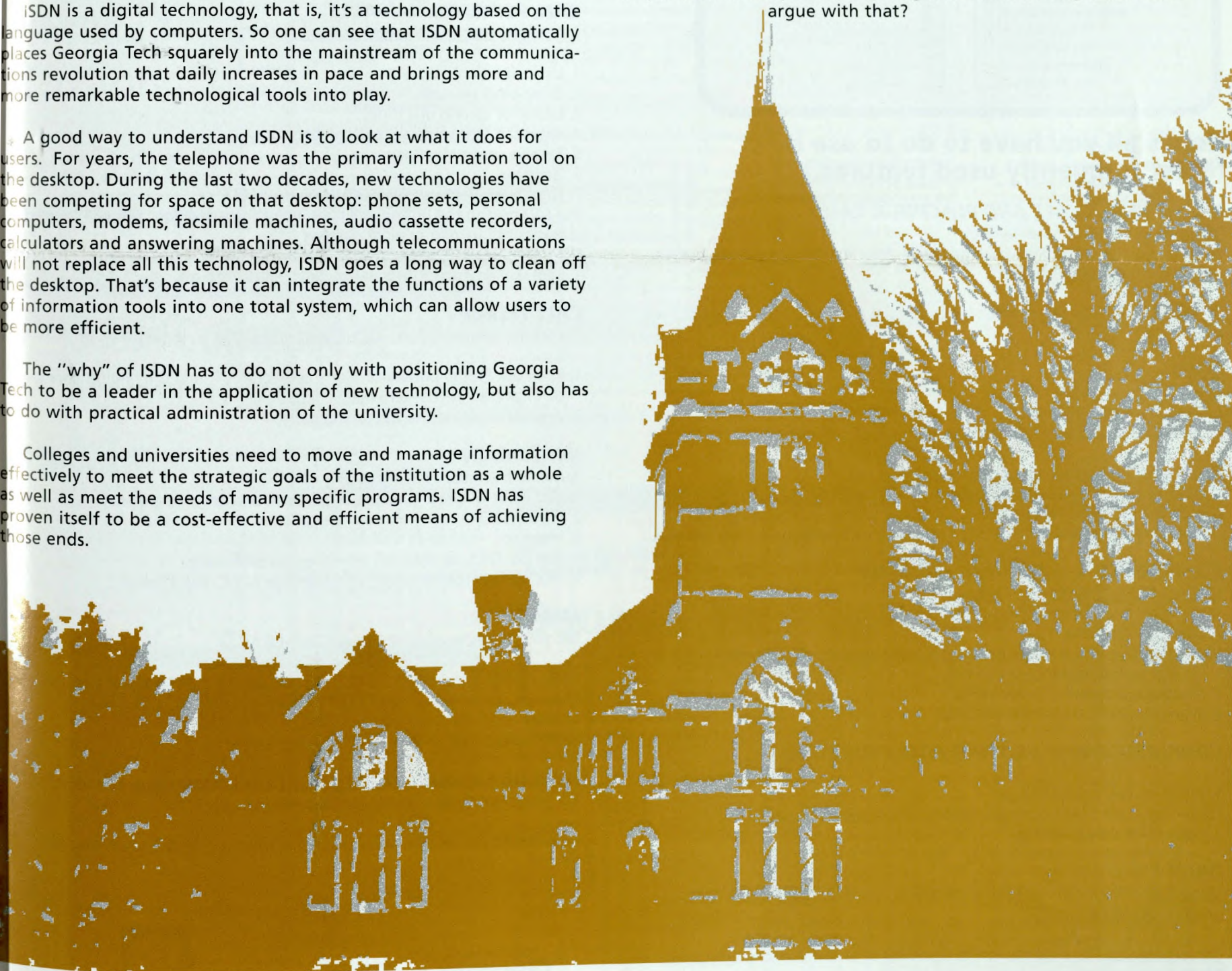
The "why" of ISDN has to do not only with positioning Georgia Tech to be a leader in the application of new technology, but also has to do with practical administration of the university.

Colleges and universities need to move and manage information effectively to meet the strategic goals of the institution as a whole as well as meet the needs of many specific programs. ISDN has proven itself to be a cost-effective and efficient means of achieving those ends.

ISDN desktop integration results in increased productivity and lower costs. Users can get more work done faster using fewer systems. The costs for the equipment and for the services needed to support this work are less than with non-integrated solutions.

As just one "for instance," looking forward in time, ISDN applications will not only improve administrative and academic operations, but also hold the potential to help facilitate delivering services off-campus in a highly cost-effective manner. The multi-media capabilities of ISDN offer flexible alternatives to constructing more academic facilities in off-campus locations.

In short, ISDN creates simplicity out of complexity and lends itself to performance improvement at significant cost savings. Who can argue with that?



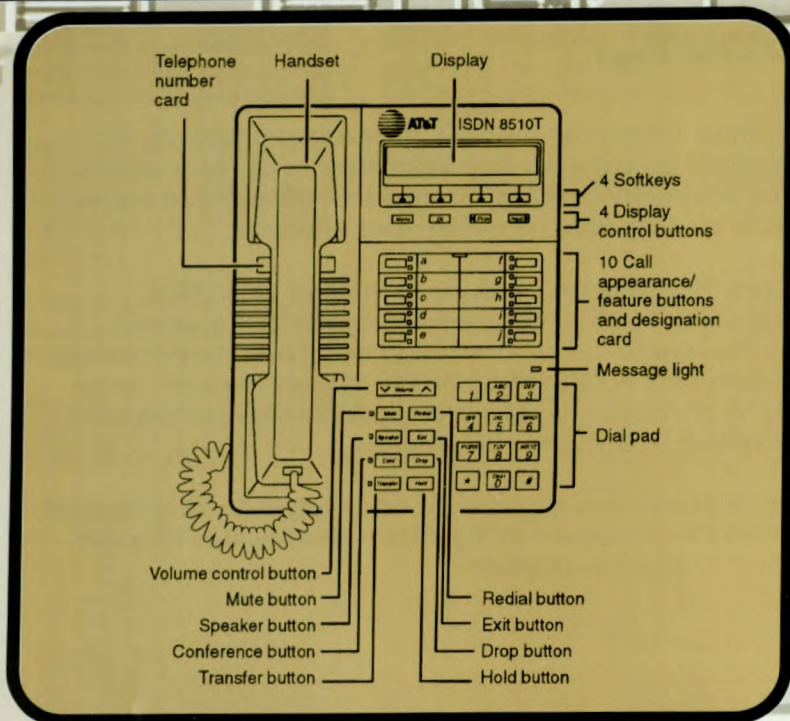
GEORGIA TECH LIBRARY





# Dialing the Future is as Easy as I-S-D-N!

**Here's the typical new terminal (it's more than a telephone, folks!):**



**Here's all you have to do to use it.  
(Most frequently used features.)**

## ANSWERING A CALL AND PLACING A CALL

To Answer a Call — Lift the handset.

Note: If you are not connected immediately, press the call appearance button next to the flashing green light.

To Place a Call — Lift the handset. Listen for dial tone, and dial the number you want to call.

## HOLD

To put a call on hold.

1. While on a call, press HOLD.
2. Press the call appearance button to continue conversation.

To put a call on hold while you answer another call.

1. Press the call appearance that is ringing. The first call will be automatically held.
2. Press the call appearance of the original call to continue conversation.  
(You can go back and forth between calls, with each being held automatically.)

## CONFERENCE — ADD ANOTHER PARTY

TO CALL (Up to 3 parties on a call.)

1. While on a call, press CONF.
  2. Listen for dial tone.
- Note: If an idle line (call appearance) is not automatically selected, press an idle call appearance button.
3. Dial the number of the next party.
  4. When the party answers, press CONF.

## CONFERENCE TWO EXISTING CALLS TOGETHER

1. While on call, press CONF.
2. Manually select held party you wish to add to the conference.
3. Press CONF a second time.

## DROP

Single Call — To disconnect from a call and obtain dial tone without hanging up, simply press DROP.

Conference Call — To drop the last party added to a conference, simply press DROP.

## TRANSFER

To send a call to another telephone number.

1. While on a call, press TRANSFER.
  2. Listen for dial tone.
- Note: If an idle line (call appearance) is not automatically selected, press an idle call appearance button.

3. Dial the number to which the call should be transferred. (Option: You can remain on the line to announce the call.)
4. Press TRANSFER.
5. Hang up.

## CALL PICKUP

(To answer another phone within your group that is ringing.)

1. Press Call Pickup button and the ringing phone will be answered at your terminal.
2. Announce yourself to the calling party.

## INTERCOM

1. To call — press INTERCOM.
2. Enter two-digit Intercom code for party.
3. The receiving party hears an alerting tone and the INTERCOM button blinks.
4. To answer — press INTERCOM or the blinking call appearance.

## CALL FORWARD VARIABLE

To forward your calls to another number.

1. Listen for dial tone.
2. Enter program code.
3. Listen for second dial tone.
4. Enter the "forward calls to" number.
5. Receive confirming tone.
6. Hang up.
7. To activate — press CALL FORWARD VARIABLE. The LED next to the button will light indicating activation. This will forward all calls directed to your primary number.
8. To de-activate — press CALL FORWARD VARIABLE a second time. The LED light will go out, indicating the feature is turned off.

## CALL PICKUP

(To answer another phone within your group that is ringing.)

1. Press Call Pickup button, or dial access code \*77, and the ringing phone will be answered at your terminal.
2. Announce yourself to the calling party.

## RING AGAIN

Automatic Call Back Calling (ACBC)

1. You make a call to someone at Ga. Tech. and get a busy signal.
2. Press ACBC.
3. Hang up.
4. The Ga. Tech. number will be retried automatically.
5. Pick up the receiver when the distinctive ACBC ring is heard.

## MENU

See your Voice Terminal QUICK REFERENCE GUIDE.

NEED ADDITIONAL HELP? JUST CALL (404) 894-7173 BETWEEN 8 A.M. AND 5 P.M.

MARCH 18-24, 1996.

AFTER MARCH 24, PLEASE CALL (404) 656-0000.

**WE'RE ON THE WEB!** FOR INFO, CRUISE THE INFORMATION HIGHWAY TO: <http://www.gatech.edu/oit/oithome/under.html>

NEED MORE OF THESE POSTERS? CALL JENNIFER COWAN, (404) 894-8460.



Department of Administrative Services  
TELECOMMUNICATIONS DIVISION  
Trust • Excellence • Service



Lucent Technologies  
Bell Labs Innovations

