



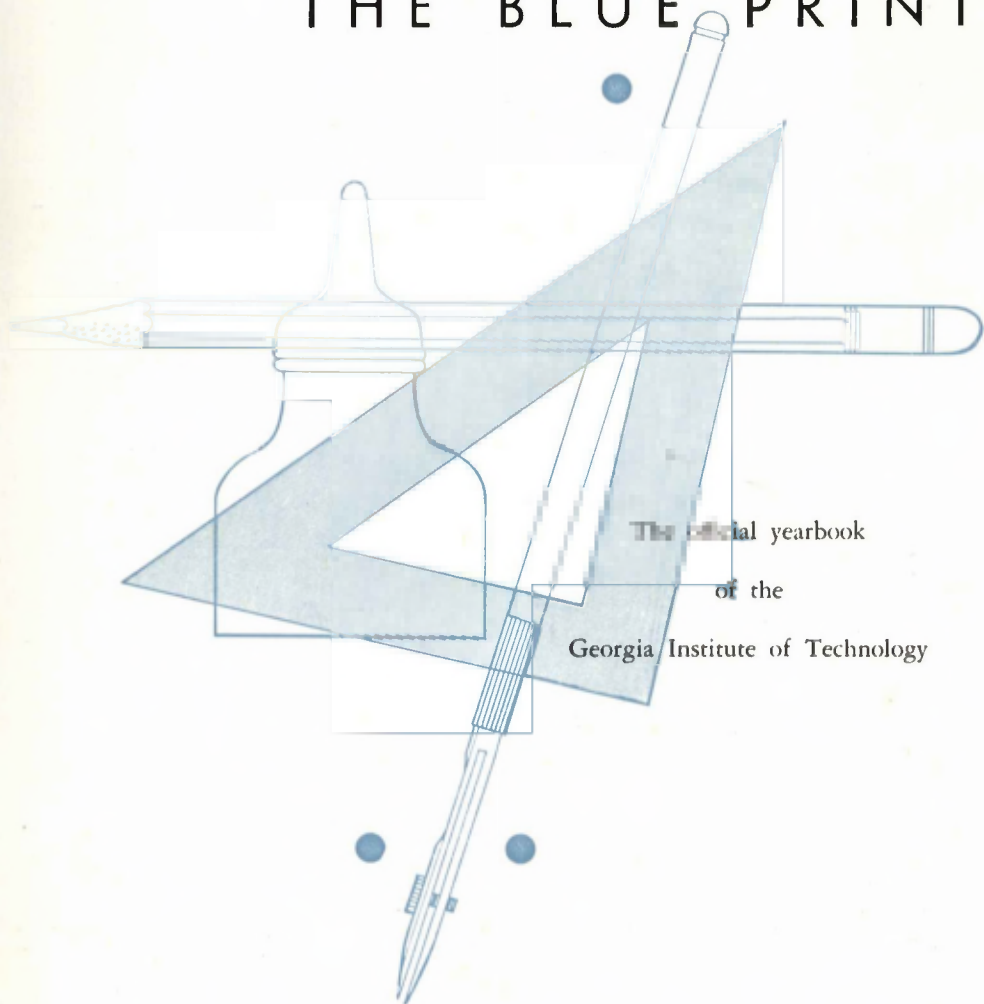
The

BLUE
PRINT

GEORGIA INSTITUTE OF TECHNOLOGY

Program

THE BLUE PRINT



The official yearbook
of the
Georgia Institute of Technology

49 *Blue Print*

Published by the students of the

GEORGIA INSTITUTE OF
TECHNOLOGY

ATLANTA, GEORGIA

Editor . . . JAMES R. WILLIFORD

Business Managers

MARC BRABANT CLARENCE JONES



GEORGIA



INSTITUTE OF TECHNOLOGY

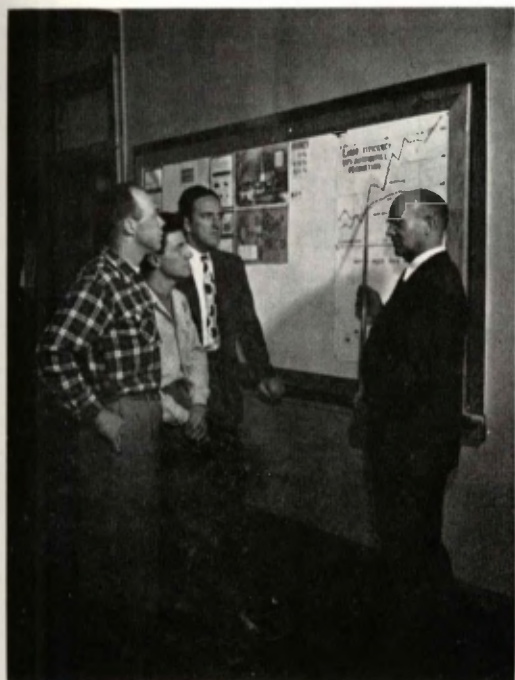


We're going to forget . . .

We're going to forget many of the things that made our college days worth while; we'll lose some of the enthusiasm and eagerness we now have; and even a few of our cherished memories will be lost with the passage of time.

It is the job of this BLUEPRINT to keep those memories living. Its purpose is to record the year's activities in such a way that the turn of each page will lead us back over the old paths, cause us to relive our experiences, renew old friendships, and in some small way recapture the moments that are gone.

Let tomorrow come! Let Tech, through the years, progress and expand beyond our recognition. All of us will glory in it. And now with the turn of these pages we can catch a fleeting glance of the Tech we knew.



Education

ADMINISTRATION

FACULTY

GRADUATES

CLASSES

DEPARTMENTS

MILITARY

Association

FRATERNITIES

FEATURES

BEAUTIES

SPONSORS

ORGANIZATIONS



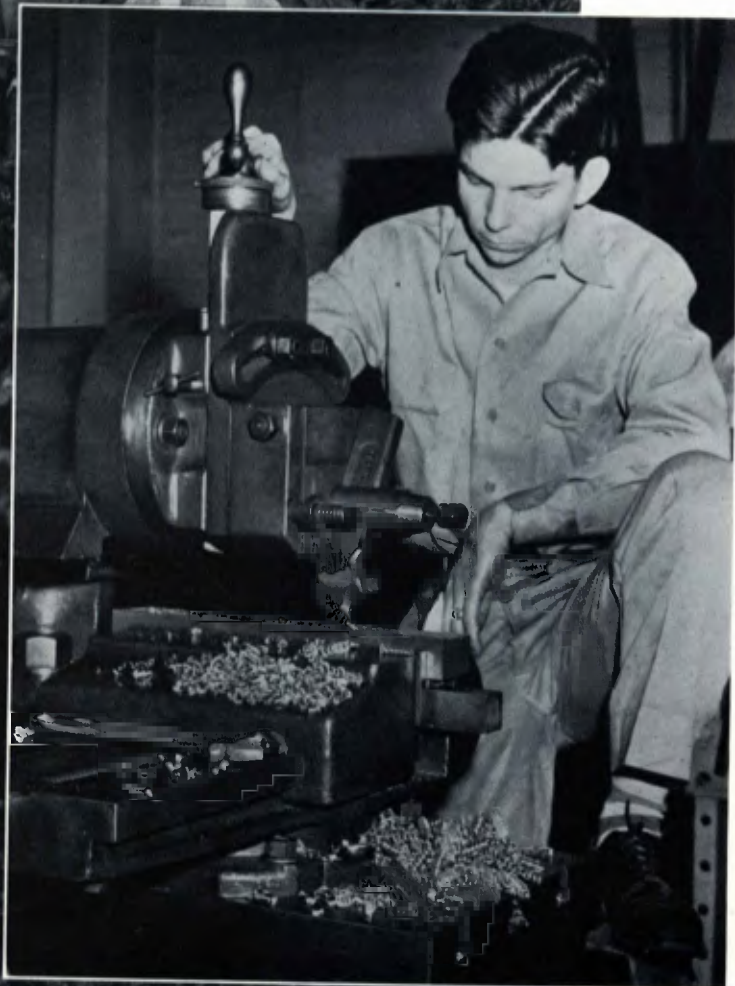
Participation

HONORS

ATHLETICS

INTRAMURALS

Building too



For a Better Future - Tomorrow

A NEW INSTITUTION came into being on July 1, 1948. For the most part it consisted of the same students, faculty buildings and courses that comprised the Georgia School of Technology. There were, however, notable improvements. You, and all of us, have watched the new Georgia Institute of Technology mushroom: in area, from 44 to 125 acres; in number of students, from 2,678 in 1939 to 6,000 in 1949; in the quality of instruction, as evidenced by the influx of prominent engineers and teachers on the faculty; in actual educational size, by the establishment of the Technical Institute; in buildings, as shown by the construction of three huge dorms, a new textile engineering building, a chemical annex and two groups of modern apartments; in progressive effort, by the raising of a fund for a student act. building and a host of minor building improvements. This progress is not just the inevitable result of a veteran crowded school, for with the issue of this yearbook the bulk of veterans is graduating—and the institution remains crowded and bustling. There is no doubt about it; the Georgia Institute of Technology is truly building today for a better future tomorrow.



In Gratitude

We Dedicate

THIS 1949 EDITION

of the

BLUE PRINT

to

GEORGE CLAYTON GRIFFIN

Dean of Students

Georgia Tech Class of 1922

as an expression of the sincere appreciation of three decades of Tech students to whom "George Griffin" has been another name for good sense, good humor, fine sportsmanship, congenious friendliness and unflagging kindness.





GEORGE C. GRIFFIN
DEAN OF STUDENTS



More than any other way, Tech has progressed educationally. Evidence is all around us—a new Textile Engineering building, increased classroom facilities, the addition of nationally known educators to our faculty, and also the readjustment of the administration to meet an expanded educational program. The prospects of a brilliant educational future make even the bright present seem somewhat overshadowed.

EDUCATION



GEORGIA INSTITUTE OF TECHNOLOGY



COL. BLAKE RAGSDALE VAN LEER

Blake R. Van Leer.

P R E S I D E N T

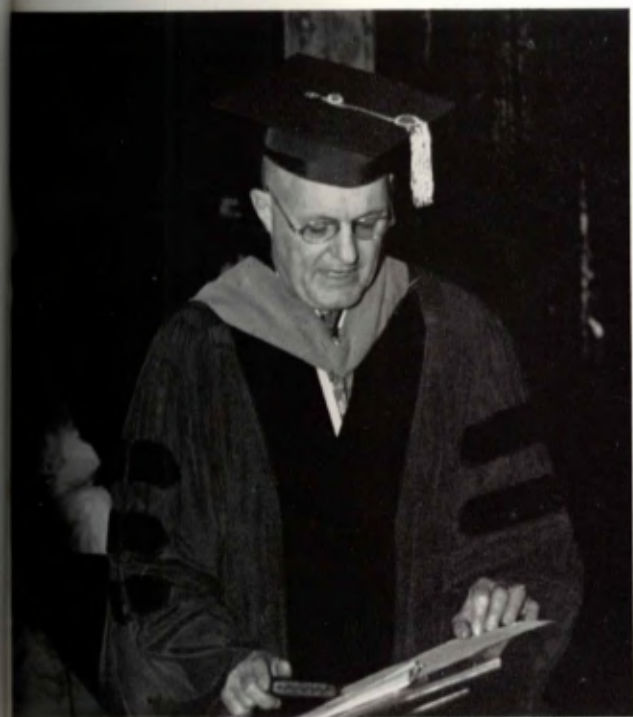
The Big Gear

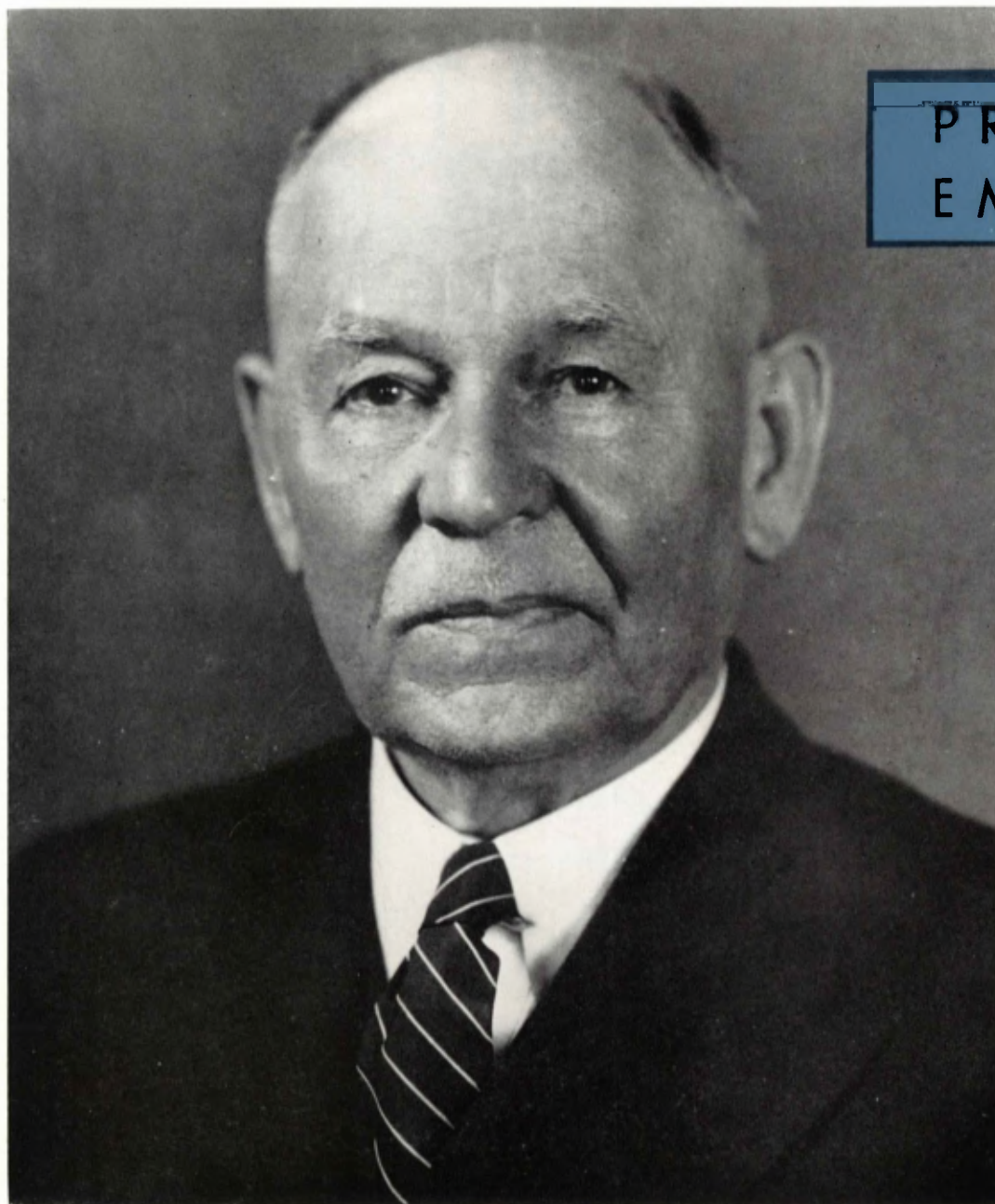
THE GEORGIA INSTITUTE OF TECHNOLOGY, as the outstanding engineering school of the South, is indeed fortunate in having Col. Blake Ragsdale Van Leer as its president and the guiding force in the continuing advancement of Tech to preserve its position of leadership.

Acclaim for our progress should rightfully be directed to President Van Leer, whose tireless and capable direction has achieved the great strides of recent years.

We salute our President for his able administration of the affairs of this institution. His direction of every phase of the activities of our rapidly growing Alma Mater has been wise and efficient.

Thanks, Colonel.





PRESIDENT
EMERITUS

Through the Years



DR. MARION LUTHER BRITTAIN

It would be impossible to give too much praise to the influence, both executive and spiritual, of Dr. Marion Luther Brittain, President Emeritus. One of the greatest living southern educators, Dr. Brittain for more than two decades guided the efforts of Georgia Tech on its climb to prominence.



VICE-PRESIDENT



CHERRY LOGAN EMERSON

Vice President

The promotion of Dean Emerson to Vice President is a tribute to his great leadership ability. We are indeed fortunate in having a man of his wisdom and foresight to direct the expansion of the school. Cherry Emerson is one of our great alumni.

Bigger and better

Faculty Foreman

DEAN OF THE FACULTY



LLOYD W. CHAPIN

Dean of the Faculty

Georgia Tech has many real leaders among the administration and faculty. The position of Dean of the Faculty is capably filled by Dean Chapin. His warm sincerity and executive ability have earned for him the admiration of students and faculty alike.





EXECUTIVE DEAN



PHIL BLASIER NARMORE

Executive Dean

With the characteristics of a true leader, Dean Narmore has carried out his difficult duties as Executive Dean. He has performed the task of enforcing the regulations of the school with firm fairness that has gained for him the respect of both faculty and students.

"Absence makes the heart grow..."

Tell me about it, pal

DEAN OF STUDENTS



GEORGE C. GRIFFIN

Dean of Students

The friendly, helpful attitude of Dean Griffin has made him admired and respected by all those who have come in contact with him. His interest in and wise administration of student affairs has greatly promoted harmony between the faculty and students.



DEAN OF ENGINEERING



JESSE W. MASON

Dean of Engineering

The record and reputation made by Dean Mason as head of the Department of Chemical Engineering are excellent. His appointment as Dean of Engineering is ample proof of that fact. His personality and ability serve us well.



"In order to drop a course . . ."

DEAN OF GENERAL STUDIES



RALPH A. HEFNER

Dean of General Studies

As Dean of General Studies, Dean Hefner has administered his duties with fairness, helpfulness and good humor. His great responsibility over the non-degree granting departments has been performed in a manner of which we are all proud.



"Now see your department head"



Office of the President

BLAKE RACSDALE VAN LEER, Sc. D., Eng. D.,
President
MARION LUTHER BRITAIN, A. B., LL. B.,
President Emeritus
ELIZABETH KOENIG,
Executive Secretary to the President
HAROLD HINSON *Receptionist*

Office of the Vice President

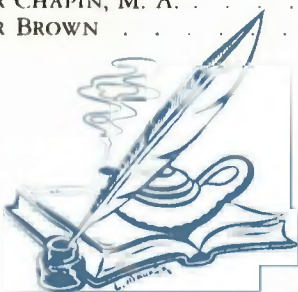
CHERRY LOGAN EMERSON, B. S. in M. E. and E. E.,
Vice President
FRANCES S. KRELLENSTEIN *Secretary*

Office of the Executive Dean

PHIL BLASIER NARMORE, B. S., Ph. D.,
Executive Dean
NAN RUSSELL LINGLE *Secretary*
MENA S. CLACK *Secretary*

Office of the Dean of Faculty

LLOYD WALTER CHAPIN, M. A. *Dean*
MARY ELEAZAR BROWN *Secretary*



According to the catalogue

WILLIAM LAWSON CARMICHAEL
Registrar



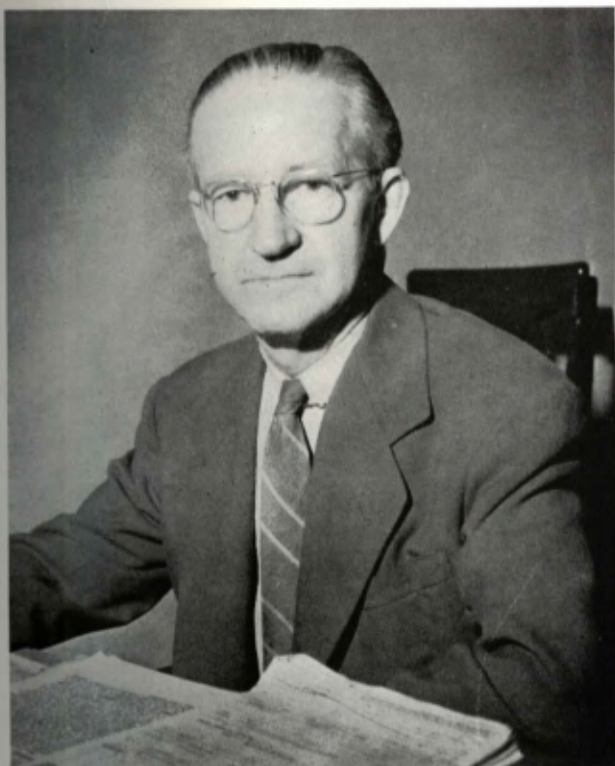
If four years isn't enough

RAY L. SWEIGERT
Dean of Graduate School



Let's find out why

GERALD A. ROSSELET
Director of Experiment Station



Twilight tutor

ROGER SHEPPARD HOWELL
Director of Extension Division



"Without missing a class . . ."

FRED W. AJAX
Associate Dean



Rat cap advisor

JOHN J. PERSHING
Associate Dean

Office of General Studies

RALPH A. HEFNER, Ph. D. *Dean*
MRS. MARTHA Y. BOYTE *Secretary*

Office of the Dean of Students

GEORGE C. GRIFFIN, B. S. *Dean*
FRED W. AJAX, B. A., M. A. . . . *Associate Dean*
JOHN J. PERSHING, A. B., M. Ed. . *Associate Dean*
MR. D. O. DOUGHERTY, C. B. S., L. L. B. . *Counselor*
MRS. G. H. LEWIS *Secretary*
FRANCES WEEMS *Secretary*
JACQUELIN JONES *Secretary*

Office of Engineering

JESSE W. MASON, Ph. D. *Dean*
DOMENICO PIETRO SAVANT, B. S. in E. E.,
M. E. in E. E., E. E. *Vice Dean*
MRS. FRANCES NORTON *Secretary*

Office of the Registrar

WILLIAM LAWSON CARMICHAEL, B. S., M. S.
Registrar
HORACE W. STURGIS, B. S., M. S. . *Associate Editor*
NORMA M. JOHNSON, A. B.
Assistant Admission's Officer

Office of the Alumni

R. J. THIESEN, B. S. in E. E.,
Executive Secretary of Alumni Association
W. ROANE BEARD, B. S. in I. M.,
Manager Alumni Activities
W. HOWARD ECTOR, B. S. in I. M.,
Executive Secretary Alumni Foundation
HAZEL M. CHAMBLESS
Secretary for Alumni Association



"We cannot accept those credits"

HORACE W. STURGIS
Associate Registrar



"Penny wise . . ."

JAMIE R. ANTHONY
Comptroller



In again, out again

JAMES GORDON WOHLFORD
Acting Director Cooperative Department

The Graduate School

RAY L. SWEIGERT, Ph. D. Dean
JOHN LAURENCE DANIEL, M. A. Vice Dean
GLENN WILLIAM GILMAN, M. S.
Administrative Assistant to the Dean

Office of the Comptroller

JAMIE R. ANTHONY Comptroller
FRANK K. HOUSTON, C. P. A. Comptroller Emeritus
FRANK B. WILSON, B. S. Purchasing Agent
EWELL I. BARNES Auditor
MILTON T. WHITFIELD Assistant Auditor
JUDY M. TILLER Secretary
MARJORIE H. MARTIN Secretary

The Cooperative Department

JAMES ERSKINE MCDANIEL, A. B., M. A., LL. B.,
(on leave) Professor and Director
JAMES GORDON WOHLFORD, B. S., M. S.,
Acting Director
MARY WARING GREEN, A. B. Administrative Asst.
The Extension Division
ROGER SHEPPARD HOWELL, B. S. in M. E., M. S.,
Director
MRS. BLANCHE B. TURNER Registrar

The Library

MRS. J. H. CROSLAND *Librarian*
MRS. JULIA M. McMICHAEL, A. B.,
Assistant Librarian
MRS. HELEN B. MARTINE, A. B., A. B. in
L. S., M. A. *Cataloguer*
MRS. ETHEL H. WILLIAMS, A. B., A. B. in
L. S. *Order Assistant*
CAROLYN BLACK, A. B., A. B. in
L. S. *Periodicals-Binding Assistant*
SAFFORD HARRIS, A. B., A. B. in
L. S. *Documents Assistant*
EVA TRACHSEL, A. B., A. B. in
L. S. *Assistant Cataloguer*

The Engineering Experiment Station

GERALD A. ROSSELOT, Ph. D.	<i>Director</i>
PAUL WEBER, Ph. D.	<i>Assistant Director</i>
ROBLEY H. TATUM	<i>Accountant</i>
DOROTHY WILSON	<i>Purchases Clerk</i>
DOROTHY EDWARDS	<i>Secretary</i>



"We need a new library"

MRS. J. H. CROSLAND
Librarian



Office of Public Relations

LESLIE F. ZSUFFA, B. S. in M. E., M. E. and
M. B. A. *Director*
ALICE CHASTAIN *Secretary*

The Health Department and Infirmary

LESLIE MORRIS, B. S., M. D. *Director*
GEORGE AGATE, B. S., M. D. . . . *School Physician*
MAX BLUMBERG, B. S., M. D.
Associate School Physician

The Veterans' Administration Guidance Center

JOSEPH E. MOORE, Ph. D. Director
BURGESS K. BAKER . . . Acting Assistant Director

Young Men's Christian Association

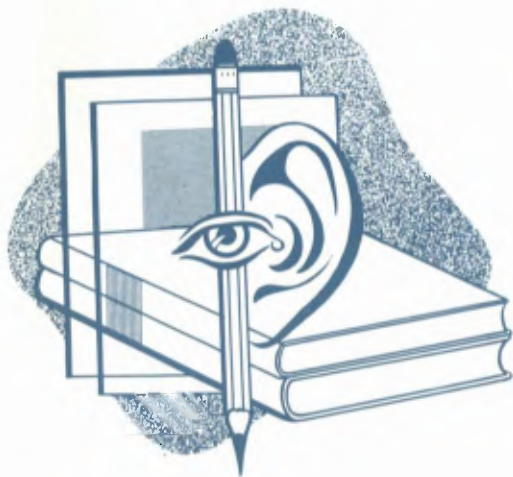
ROBERT CHARLTON COMMANDER, B. S., B. D.
Y. M. C. A. General Secretary
GLADYS I. HAWES Office Secretary

"Sir, it mentioned Georgia Tech"

LESLIE F. ZSUFFA
Director of Public Relations



The Schools



On September 1, 1948, sweeping changes in the administration of the Georgia Institute of Technology became effective. The new offices of Vice President and Dean of the Faculties were created and the degree-granting departments were designated as schools.

These changes are external evidence of the many-sided growth and expansion of the Georgia Institute of Technology. The physical plant and the size of the student body have greatly increased in the past few years, and the division of the academic administration into the College of Engineering and the General College emphasizes this expansion.





The Graduate School

The Division of Graduate Studies is that body through which the faculty of the Georgia Institute of Technology grants advanced degrees in engineering, science, and management. It offers the superior student an opportunity to realize the full extent of his capabilities; it gives him a chance to gain the intimate acquaintanceship with the fundamental concepts of his field that will enable him to achieve the highest degree of professional competence.

Graduate study is particularly recommended for those students whose interests and aptitudes carry them beyond routine application. It is for the student of engineering who wishes to work in research, development, or highly technical design; it is for the student of science who feels a curiosity about the unknown; it is for the student of management who aspires to the formulation as well as the administration of policy; and it is for those who desire to enter the profession of scientific or engineering education. It is not, like undergraduate study, a carefully charted path through familiar landmarks of established fact; it is a staging ground for an expedition into the unknown.

GEORGIA INSTITUTE
OF TECHNOLOGY



BAKER
BORMAN
CATCHPOLE
FARVER
GORDON

BALLEW
BROWN
CHOU
FERRILL
GRIFFIN

BEAVER
BUCKINGHAM
CRAWFORD
FISHER
GUNSON

BODIFORD
BYRD
DAVIS
FLYNT
HAMILTON

BOLLINGER
CARTER
DUVAL
GLEASON
HANCOCK

JOHN HOLLAND BAKER, JR. Crystal City, Texas
Electrical Engineering
 JOE FRANCIS BALLEW Richmond, Kentucky
Chemical Engineering
 WILLIAM M. BEAVER High Point, N. C.
Chemical Engineering
 ROBERT G. BODIFORD Gainesville, Fla.
Aeronautical Engineering
 EVERETT R. BOLLINGER, JR. Atlanta, Ga.
Industrial Management
 ROBERT C. BORMAN Hot Springs, Ark.
Industrial Engineering
 JOHN ANGUS BROWN Lake Wales, Fla.
Chemical Engineering
 WALTER SAMUEL BUCKINGHAM, JR. Vero Beach, Fla.
Industrial Management
 COHEN BUSTER BYRD Stillmore, Ga.
Electrical Engineering
 WILLIAM L. CARTER Covington, Va.
Chemical Engineering
 ERIC JOHN CATCHPOLE London, England
Aeronautical Engineering
 CHIA SAN CHOU Kiangsu, China
Mechanical Engineering
 JOHN L. HANCOCK Atlanta, Ga.
Chemical Engineering

JEAN GRAY CRAWFORD Murray, Ky.
Civil Engineering
 JOEL LAMAR DAVIS Atlanta, Ga.
Industrial Engineering
 NED EDWARD DUVAL, JR. Monroe, La.
Electrical Engineering
 KENNETH C. FARVER New Castle, Penn.
Electrical Engineering
 ROBERT S. FERRILL Chattanooga, Tenn.
Mechanical Engineering
 CARL BYRD FISHER Whittier, N. C.
Electrical Engineering
 EDWARD REID FLYNT Sparta, Ga.
Electrical Engineering
 CARL PAGE GLEASON Groton, N. Y.
Industrial Management
 DAVID ALBERT GORDON Patterson, N. J.
Chemical Engineering
 CLAYTON H. GRIFFIN Atlanta, Ga.
Electrical Engineering
 DAVID OLIVER GUNSON Columbus, Ohio
Electrical Engineering
 STUART ADAMS HAMILTON, JR. Aberdeen, Md.
Electrical Engineering



HARRIS
HOLSHOUSER
LENOIR
LIU
MORRIS

HASELL
JOHNSTON
LENTCHNER
LONG
NATTRESS

HATCH
KENNEY
LEWIS
McCANN
RAHNER

HEALY
KOPP
LIN
McGUIRE
RENFRO

HOLMES
LATTA
LITMAN
MOORE
ROBERTS

THOMAS SANDERS HARRIS, JR. Fort Valley, Ga.
Chemical Engineering
 PHILIP G. HASELL, JR. Columbia, S. C.
Electrical Engineering
 JOHN ELMER HATCH, JR. Fredericksburg, Va.
Aeronautical Engineering
 WILLIAM RAYMOND HEALY Chattanooga, Tenn.
Industrial Management
 WILLIAM M. HOLMES Birmingham, Ala.
Electrical Engineering
 JESSE R. HOLSHOUSER, JR. Greensboro, N. C.
Electrical Engineering
 STEPHEN L. JOHNSTON Atlanta, Ga.
Electrical Engineering
 BEN DORAN KENNEY Lethridge, Alberta, Canada
Electrical Engineering
 EDWARD WILLIAM KOPP West Palm Beach, Fla.
Industrial Engineering
 ALLEN FORDYCE LATTA St. Louis, Mo.
Aeronautical Engineering
 STERLING P. LENOIR, JR. Prairie, Miss.
Electrical Engineering
 DANIEL M. LENTCHNER Far Rockaway, N. Y.
Industrial Management

JAMES THOMAS ROBERTS, JR. Auburn, Ala.
Chemical Engineering

GORDON H. LEWIS Washington, D. C.
Industrial Engineering
 YO-I LIN Foochow, China
Architectural Engineering
 ARNOLD P. LITMAN Kansas City, Mo.
Industrial Management
 TUN-YUAN LIU Chungking, China
Textile Engineering
 JIM THOMAS LONG Piedmont, S. C.
Electrical Engineering
 MARSHALL JOSEPH McCANN Miami, Fla.
Electrical Engineering
 RICHARD W. McGUIRE Jackson, Miss.
Industrial Engineering
 FLETCHER BROOKS MOORE Heiberger, Ala.
Electrical Engineering
 JOHN MORRIS Savannah, Ga.
Chemical Engineering
 JOHN ANDREW NATTRESS Atlanta, Ga.
Industrial Engineering
 HARRY BENEDICT RAHNER Florence, Ala.
Electrical Engineering
 CHARLES G. RENFRO Tampa, Fla.
Electrical Engineering



SAKATE
SHORE
TASCON
TODD
WICKER

SCHOENWETTER
SOO
THOMAS, F.
TRIMBLE
WILCOX

SCHROEDER
SPRINGS
THOMAS, G.
TUNG
WINEMAN

SCOTT
STATON
THOMAS, R.
TURNER
WOODWARD

SEACORD
STRICKLAND
THOMPSON
WARREN
YOUNG

FREDERICK S. SAKATE Rutherford, N. J.
 *Electrical Engineering*
 HOWARD K. SCHOENWETTER Klemme, Iowa
 *Physics*
 HENRY JOHN SCHROEDER, JR. Washington, D. C.
 *Electrical Engineering*
 CHARLEY SCOTT Meridan, Miss.
 *Mechanical Engineering*
 CHARLES L. SEACORD, JR. Atlanta, Ga.
 *Aeronautical Engineering*
 JAMES BUTLER SHORE Kernersville, N. C.
 *Mechanical Engineering*
 SHAO LEE SOO Shanghai, China
 *Textile Engineering*
 DAVID ALBERT SPRINGS Myrtle Beach, S. C.
 *Electrical Engineering*
 ROCKER T. STATON, JR. Union, Miss.
 *Industrial Engineering*
 JAMES M. S. STRICKLAND Tuscaloosa, Ala.
 *Electrical Engineering*
 EUGENIO TASCON Palmira, Colombia, S. A.
 *Chemical Engineering*
 FRANK A. THOMAS, JR. Atlanta, Ga.
 *Mechanical Engineering*
 WILLIAM W. YOUNG

GERARD B. THOMAS West Point, Miss.
 *Aeronautical Engineering*
 RUBLE A. THOMAS Birmingham, Ala.
 *Electrical Engineering*
 WILLIAM K. THOMPSON, JR. Spartanburg, S. C.
 *Civil Engineering*
 JOSEPH EDGAR TODD Richmond, Ky.
 *Chemical Engineering*
 AVERAL THEODORE TRIMBLE, JR. St. Petersburg, Fla.
 *Chemical Engineering*
 CHARLES P. C. TUNG Haimen Kiangsu, China
 *Textile Engineering*
 MAX ALLEN TURNER Cordell, Okla.
 *Chemical Engineering*
 ELBERT G. WARREN, JR. Dubach, La.
 *Electrical Engineering*
 DAVID J. WICKER Americus, Ga.
 *Chemical Engineering*
 KENNETH KNIGHT WILCOX Orlando, Fla.
 *Mechanical Engineering*
 ANDREW R. WINEMAN Youngwood, Penn.
 *Aeronautical Engineering*
 CHARLES DAVIS WOODWARD Atlanta, Ga.
 *Industrial Management*
 Panama City, Fla.

Industrial Engineering