



# Georgia Tech Update

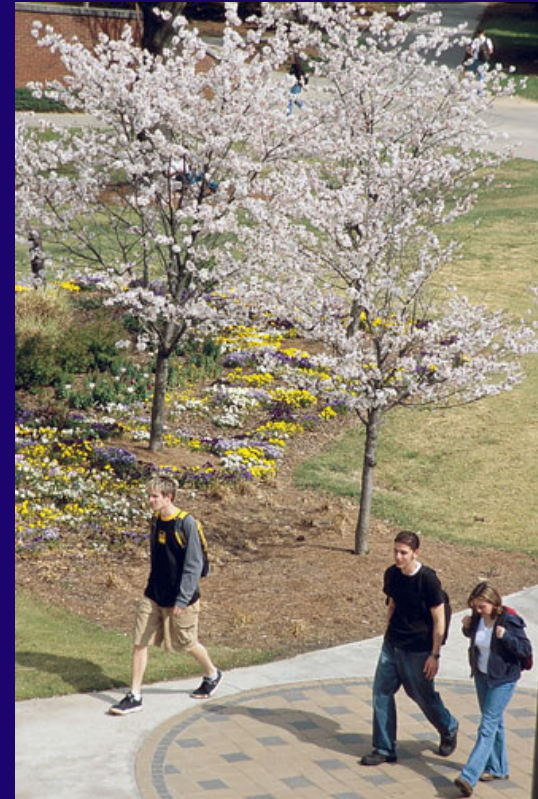
President G. Wayne Clough

Georgia Tech Research Corporation

June 12, 2004

# Admissions

- ⇒ 2,550 freshmen, up 16%
- ⇒ Average SAT: 1338
- ⇒ Women up 33%
- ⇒ African Americans up 29%
- ⇒ Hispanics up 56%
- ⇒ International students up 45%
- ⇒ All colleges up except Computing (down 6%)



# Students shine



GT Motorsports  
wins Formula SAE  
in Australia

Monique Gupta,  
Churchill  
Scholarship



## Goldwater Scholarships:

Thomas Oliver  
Mark Callaghan



Laurence Ralph,  
Mellon Fellowship in  
Humanistic Studies



Gabe Brostow,  
Marshall Sherfield  
Fellowship



Jia Xu, Marshall  
Scholarship

# Faculty honored

Chaddick  
Chair Russell  
Dupuis wins  
National  
Medal of  
Technology



Julia Kubanek,  
biology, wins  
Presidential Early  
Career Award for  
Scientists and  
Engineers



National Academy of  
Engineering: Fred Juang,  
Motorola Foundation Chair,  
and Jeff Wu, Coca-Cola Chair

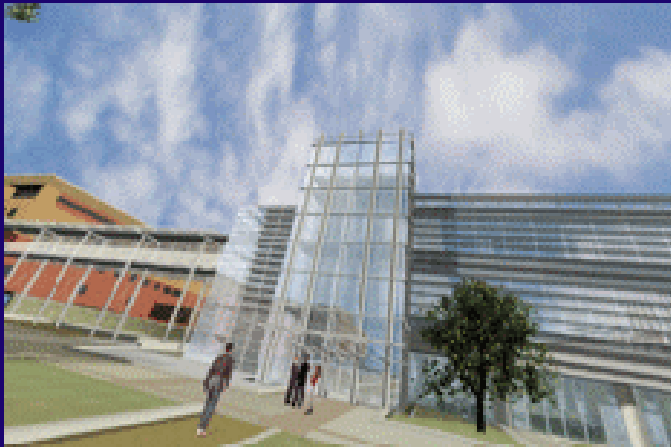


# Construction continues

Campus Rec Center



Student Center Commons



Klaus Advanced Computing Building



Molecular Science and Engineering Building

# Swarming in San Antonio

Spectacular run through the brackets made Tech the first Georgia team to play in a national championship game.



Volleyball team finished its season ranked 8<sup>th</sup> in the nation.



Baseball team won 20 straight, became NCAA Atlanta Region Champs.

# Rankings remain high



⇒ Engineering holds at #5

→ Industrial/systems engineering #1 for 14<sup>th</sup> consecutive year

→ Biomedical engineering jumps up to #2

→ Aerospace, civil, electrical, environmental and mechanical engineering also in top 10

⇒ College of Management climbs to #42, tied with UGA's Terry School of Business

⇒ Public Policy's information and technology management program ranks #8





# Update on policy involvements

- ⇒ National Innovation Initiative
- ⇒ Moon to Mars Mission
- ⇒ Sam Nunn Policy Forum on Bioterrorism
- ⇒ G-8 media briefing



# State and tuition revenues

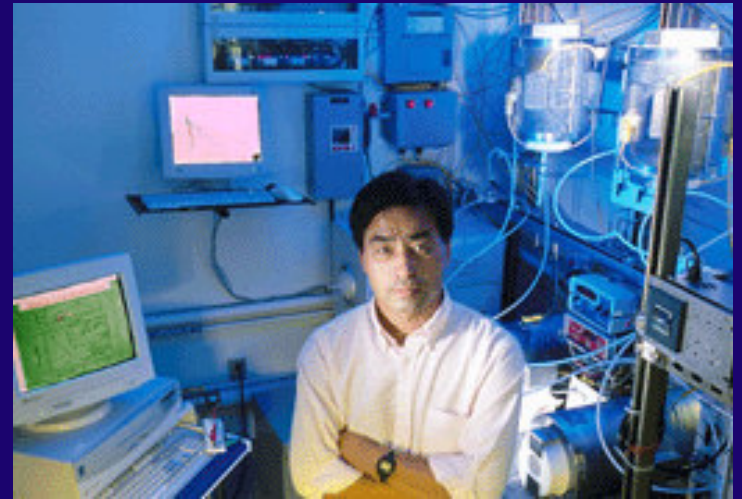
(in millions of dollars)

	<u>FY 01</u>	<u>FY 05</u>	<u>Change</u>	<u>%</u>
<b>State revenue</b>				
Resident Instruction	\$151.0	\$186.9	\$35.9*	23.7%
Special Initiatives	17.4	15.0	(2.4)	-13.0%
ETACT (lottery)	3.6	0.0	(3.6)	-100.0%
GTRI/Trad Industries	9.9	7.6	(2.3)	-22.9%
ATDC/EDI	9.3	8.7	(0.6)	-6.2%
<b>TOTAL</b>	<b>\$191.2</b>	<b>\$218.2</b>	<b>\$27.0</b>	<b>14.1%</b>

\* Cumulative shortfall of \$21.7 million in new funding based on academic workload under Regents funding formula.

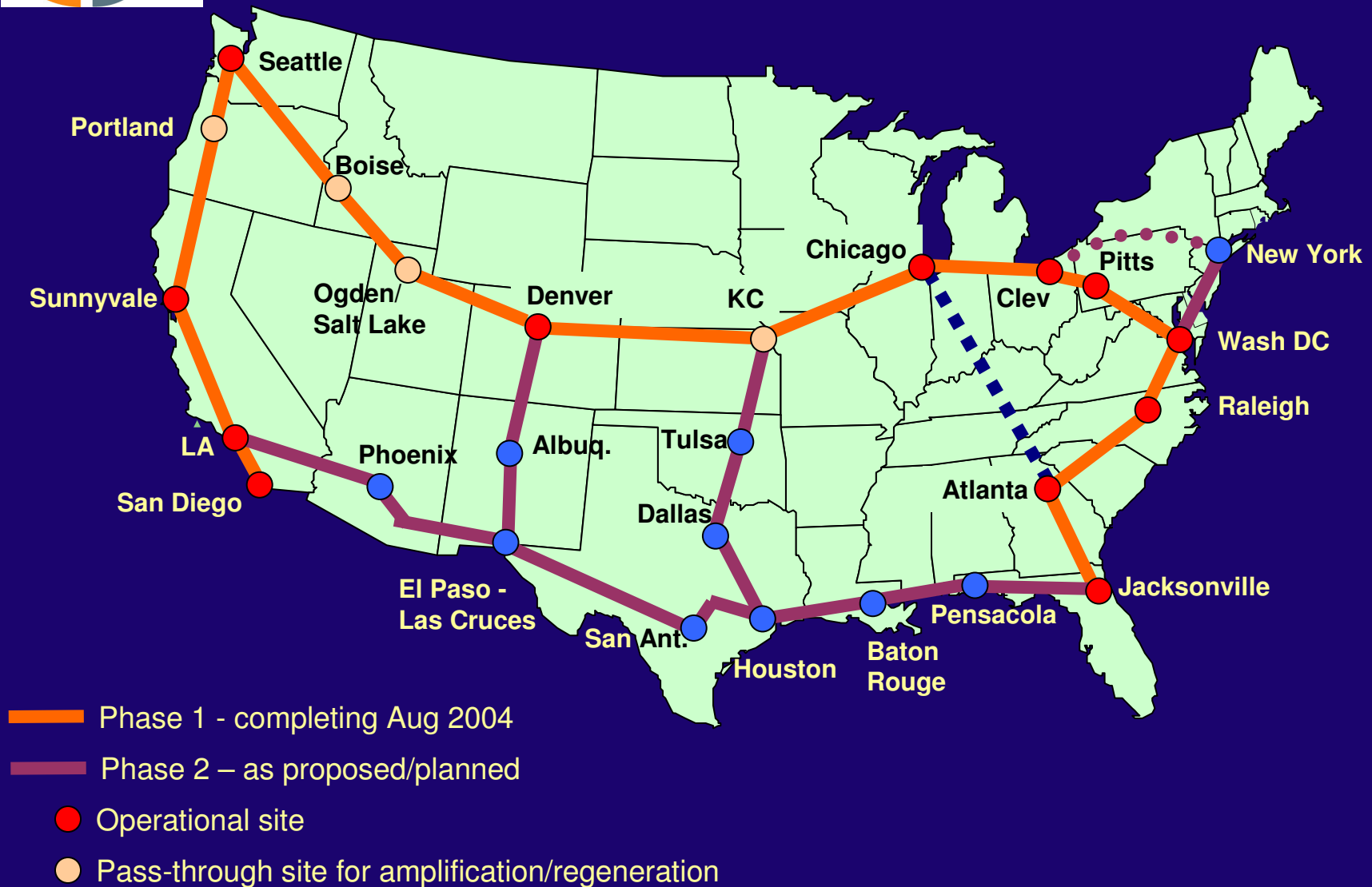
# Research

- ⇒ \$320 million in awards anticipated this year
- ⇒ Tech will have direct connection to the world's most powerful computer, now under construction at Oak Ridge National Lab
- ⇒ Tech is a partner in National Lambda Rail Inc., connecting major research universities to each other and to high-performance computing centers

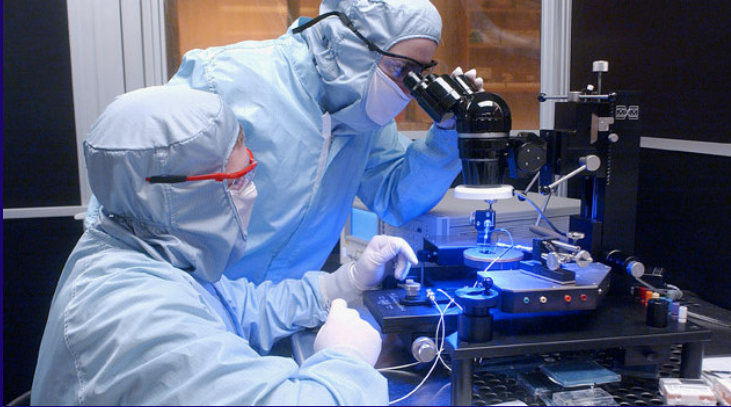




# National LambdaRail infrastructure







# National nanotech network

- ⇒ 13 universities formed the National Nanotechnology Infrastructure Network, sponsored by NSF
- ⇒ Provides access for scientists from universities, corporations, and government labs to specialized university resources for studying atomic and molecular-scale materials and processes