

The WHISTLE

The Georgia Institute of Technology

Faculty/Staff Newspaper Volume 23, No. 46

December 20, 1999

The final countdown: Y2K FAQs and reminders

Toni Lynn Mills
Office of Information Technology

The countdown is on, and the multiyear effort of the Georgia Tech Y2K Program Office and all campus departments will soon be put to the true test. "The on-campus utilities infrastructure, such as power, steam heat and telecommunications systems, have been assessed and remediated as necessary," said Tech Y2K Program Director Ken Edwards. "Additionally, mission critical administrative information systems including BANNER, payroll and financials have been upgraded and tested to meet the Y2K requirements."

Following are answers to several frequently asked questions, plus two checklists on page 2 to help the campus community prepare for "Zero Day" (approximately 7 p.m. on Dec. 31 to noon on Jan. 1) in the office and at home.

Tech Y2K Frequently Asked Questions

Q. How likely is a Y2K emergency that would force the campus to close or to cancel classes?

A. In the last five years Georgia Tech has closed only rarely due to snow emergencies. Occasional loss of local utilities has forced Tech to cancel or reschedule classes, but never to close the entire Institute.

Loss of local utilities to the Institute for an extended period of time, due to a major regional emergency or due to Y2K problems, could force Tech facilities to close for an unknown period of time. Georgia Power, Atlanta Gas Light and other local utilities all report Y2K readiness for their systems. However, due to the high degree of regional interconnection of utility services, problems could originate from a source outside of this service area that would have an effect on the Atlanta metro area.

While the likelihood of closure is quite low, it is not possible to predict how long any closure or cancellation of classes may last. As soon as local utilities and other essential services are restored, the Institute will resume day-to-day operations.

Q. How will the campus be monitored during Zero Day?

A. Facilities, Housing, OIT and Police will have expanded staff on campus during Zero Day. Starting at 6 p.m. on New Year's Eve, OIT will staff a command post, where Y2K management and internal communications will be coordinated. On-site staff will send information throughout the evening for updates as necessary to President Wayne Clough; Mike Thomas,

provost; Bob Thompson, senior vice president; and Bob Harty, executive director of Communications and Public Affairs.

Facilities will monitor all utilities and other core operations from their offices from 7 p.m. on Dec. 31 until the early afternoon on Jan. 1. Starting at 7 a.m. on Jan. 1, they will fan out across campus to check every campus building. Georgia Tech Police will also be checking building security systems. Facilities' staff will be on campus from 7 a.m. - 7 p.m. on Jan. 1 - 3 to respond to Y2K situations. Anyone with critical experiments or expensive equipment is asked to monitor those things themselves.

Q. Where should I go for updated information on campus emergencies or class cancellations resulting from Y2K problems?

A. If a decision is made to declare the campus closed, Institute Communications and Public Affairs will notify the local radio and television stations. Employees and students can call Campus Information at 894-2000 or see the web at <http://www.year2000.gatech.edu/> to get the most current and accurate campus information. In addition, radio stations WSB (AM 750) and WGST (AM 640 and 105.7 FM) will carry campus status information. Do not call the Georgia Tech Police Department for information. Call them only to report life-threatening emergencies.

Q. Where can I find out more information?

A. In addition to technical resources in your department, school or college, there are a variety of information sources. For Tech Y2K emergency information and links to other Y2K-related web sites, see the Tech Y2K web site at <http://www.year2000.gatech.edu/>.

Information sources

- ☐ Georgia Tech's Y2K web site
<http://www.year2000.gatech.edu/>
- ☐ Campus Information, 894-2000
- ☐ Radio stations WSB (AM 750) and WGST (AM 640 and FM 105.7)

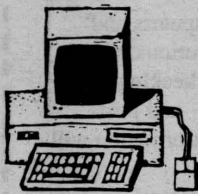
Important note

Do not call the Georgia Tech Police Department for information. Call them only to report life-threatening emergencies. Do call Campus Information for updated status reports at 894-2000.



Inside

See page 2 for Y2K checklists for home and office.



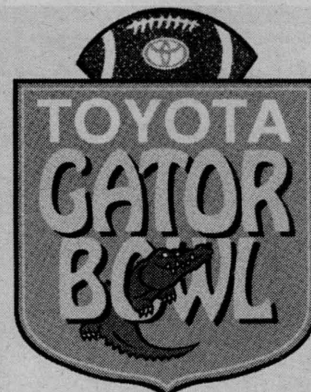
Going to the Gator Bowl

With its invitation to the 2000 Toyota Gator Bowl, Georgia Tech earned its third straight bowl appearance. The Yellow Jackets also played in the Gator Bowl last year, as well as the 1997 Carquest Bowl.

Tech will take on Miami in the 55th annual Gator Bowl Game on Jan. 1 at 12:30 p.m. in Alltel Stadium, Jacksonville, Fla. The game will be televised on NBC. For ticket information, call 894-5447 or see the web at <http://www.ramblingwreck.com/fbo/fbc/gatorbowl.html>. For a full list of game week events, see <http://www.ramblingwreck.com/fbo/fbc/gatorevents.html>.

End of season recognition for the Yellow Jackets also included multiple honors for quarterback Joe Hamilton, who

was recognized as the nation's top quarterback; finished second in the Heisman Trophy voting; received player-of-the-year honors in the ACC; and was named to the Associated Press All-America first team.



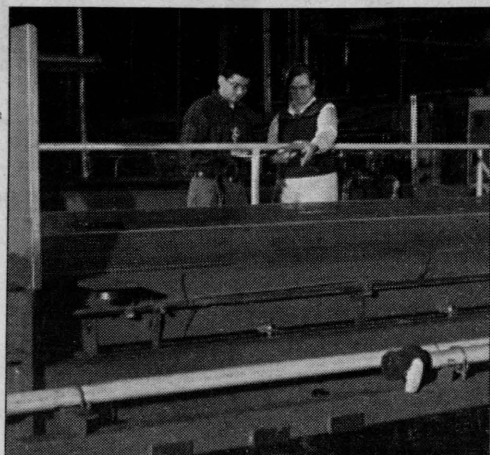
Co-op program gets 'charter' accreditation

Denise Noble
Institute Communications and Public Affairs

Georgia Tech's Cooperative Education Program recently was named a member of the "charter class" of co-op programs accredited by the Accreditation Council for Cooperative Education (ACCE). The accreditation period is for six years.

"This is a major step [for Tech] toward excellence in cooperative education," said Tom Akins, director of Tech's Cooperative Education program. "This is a new accrediting body, and Georgia Tech is in the 'charter class' of programs that have received this designation. It reflects extremely well on our staff, faculty and, most especially, our students and co-op employers."

According to Akins, the co-op community saw a need to raise the quality of programs throughout the United States. The Accreditation Council for Cooperative Education was established with a mission to recognize the achievement and maintain standards for programs of cooperative education.



Co-op students Joey Brewer (left) and Julia Everett learn about the manufacturing process at a textile company.

To be considered for accreditation, Georgia Tech submitted a self-study to document its compliance with the "Attributes of Cooperative Education Programs." An accreditation team of cooperative education professionals reviewed the study, then came to Tech for a two-day visit in April to confirm the program's compliance with the attributes, standards, program outcomes and evaluation criteria specified in the accreditation process. The team visited with co-op office staff, co-op students and faculty; prepared a report of its findings; and made its recommendations to the Accreditation Review Board of the ACCE, who then made the final decision.

Tech's co-op program will not rest on its laurels, however. "Although the full report is quite complimentary, we do have a few areas that need some work," Akins said. According to Akins, they will be working to increase staff, space and computing resources. They also aim to develop stronger ties with faculty.

Seven other schools have received accreditation thus far: Mississippi State University; North Carolina State University; Southern Methodist University; School of Engineering and Applied Science-Stevens Institute of Technology; University of Central Florida; University of Cincinnati; and University of West Florida. For more information, see the web at <http://www.co-opeducation.org>.

Preparing for Y2K

Tips for preparing your home

The following is a checklist from the American Red Cross to help you prepare for Y2K:

- ✓ Check with manufacturers of any essential computer-controlled electronic equipment that you own to see if it may be affected. This includes appliances, consumer electronics and any other equipment which may be controlled by an embedded chip.
- ✓ Stock disaster supplies to last several days to a week. This includes having nonperishable foods, stored water and an ample supply of prescription and nonprescription medications that you use regularly.
- ✓ Have some extra cash or traveler's checks on hand in case electronic transactions involving ATM cards, credit cards and the like cannot be processed. Keep cash or traveler's checks in a safe place, and withdraw money from your bank in small amounts well in advance of Dec. 31.
- ✓ As you would in preparation for a winter storm, keep your automobile gas tank above half full.
- ✓ In case the power fails, plan to use alternative cooking devices in accordance with manufacturer's instructions. (If on campus, follow resident hall guidelines). Don't use open flames or charcoal grills indoors.
- ✓ Have extra blankets, coats, hats and gloves. Do not plan to use gas-fueled appliances, like an oven, as an alternative-heating source. The same goes for wood-burning or liquid-fueled heating devices that are not designed to be used in a residential structure. Camp stoves and heaters should only be used out of doors in a well-ventilated area. If you do purchase an alternative-heating device, make sure it is approved for use indoors and is listed with the Underwriters Laboratories (UL).
- ✓ Have plenty of flashlights and extra batteries on hand. Don't use candles for emergency lighting.
- ✓ If you have smoke alarms that are hard-wired into your home's electrical system (most newer ones are), check to see if they have battery back-ups.
- ✓ Be prepared to relocate to a shelter for warmth and protection during a prolonged power outage or if for any other reason local officials request or require that you leave your home. Listen to a battery-operated radio or television for information about where shelters will be available.
- ✓ If you plan to use a portable generator, connect what you want to power directly to the generator. Do not connect the generator to your home's electrical system. Also, be sure to keep a generator in a well-ventilated area either outside or in a garage, keeping the door open. Don't put a generator in your basement or anywhere inside your home.

Reminders for the office

- ✓ Unplug any computers or electrical appliances. If you can't unplug something, at least turn it off.
- ✓ The risk to any research-related equipment should be evaluated prior to the holiday break, and arrangements should be made to protect research integrity. Each department must determine if they should halt experiments that require utility services, such as power or water, to avoid possible damage or loss of research integrity.
- ✓ Install anti-virus software on all computers and keep virus definitions up-to-date. Be cautious when opening any attachments without first checking with your software manufacturer for any pre- and post-Zero Day virus updates. Urgent virus information will be available on the web at <http://www.security.gatech.edu/hottopics.html>.
- ✓ Upgrade all computer software to Y2K compliant versions (for help, see <http://www.year2000.gatech.edu/>).
- ✓ Campus will be closed from Dec. 25 - Jan. 3. Don't be on campus if you don't have to during the rollover to 2000. If you must be on campus during the rollover, have a flashlight and extra batteries.
- ✓ Limit calls to campus during Zero Day. BellSouth advises everyone to stay off the phone at midnight unless absolutely necessary.
- ✓ From Dec. 31 - Jan. 3, to get updated information call Campus Information 894-2000 to hear a recorded Y2K update or see the web at <http://www.year2000.gatech.edu/>. Both will be operational by Dec. 30.
- ✓ Unless otherwise instructed by your department, you should follow normal procedures for reporting problems, i.e. building manager for building problems or your Customer Support Representative (CSR) for hardware/software problems.
- ✓ OIT, Facilities, Georgia Tech Police and Auxiliary Services will be monitoring the campus infrastructure to ensure that any disruptions of service are resolved before campus reopens on Jan. 4.
- ✓ Monitor Atlanta radio, TV and newspapers for any major Georgia Tech developments which would require the closure or partial closure of campus.

Georgia Tech

The Whistle

Editor-in-Chief: Denise Noble

Published by Institute Communications and Public Affairs.

Publication is weekly throughout the academic year and biweekly throughout the summer.

The Whistle can be accessed electronically through the Georgia Tech Web page, or directly at www.whistle.gatech.edu.

E-mail Whistle submissions to denise.noble@icpa.gatech.edu, or fax to Denise at 894-7214, at least 10 days prior to desired publication date. For more information, call 894-8324.

All phone numbers listed in The Whistle are in the 404 area code unless otherwise indicated.

Cost/\$450 Copies/4,800

Institute Communications and Public Affairs
Wardlaw Center
177 North Avenue
Atlanta, Georgia 30332-0181

Georgia Tech is a unit of the University System of Georgia.

Master Plan progress affects campus trees

Two major campus construction projects are expected to begin early next year—the North Campus Parking Deck and the Environmental Sciences and Technology Building. In addition, a major “streetscape” project also is anticipated on Techwood Drive between North Avenue and Bobby Dodd Way. As part of these projects, a number of trees will be cleared, relocated or replaced.

The multistory, 850-space parking deck will be located at the southwest corner of Atlantic Drive and Peachtree Place and will take approximately 12 months to construct. The Environmental Sciences and Technology Building, located within the block bordered by Plum Street, Cherry Street, Eighth Street and Ferst Drive, will take roughly 22 months to complete. Because of the location of both these projects, a number of trees will need to be cleared.

With the sustainability goals of the Campus Master Plan in mind, the administration assessed the condition of the trees and proposed to minimize the loss by relocating some healthy existing trees and planting new trees. Ultimately, more trees will be planted than removed, supporting the overarching master plan goal of sustainable development.

The following is an outline of the plan to minimize the loss of trees:

North Campus Parking Deck, Environmental Sciences and Technology Building

The NCPD site is a two-acre parcel located immediately north of the Neely Nuclear Reactor Office Building. This facility will provide much needed parking in this sector of campus. More than half the trees scheduled for removal are in poor-to-fair condition, several are inferior species, some are severely weakened by disease and likely to fall in wind and ice

storms, and many others are growing too close together for a full crown to develop.

A plan has been developed for transplanting and replacing a number of trees. This month at least five of the choicest trees will be transplanted from the NCPD site to west campus housing courtyards. When construction is finished, the deck will be landscaped with roughly 30 shade trees. Furthermore, the widening of State Street—which is necessary, in part, to accommodate the increased traffic volume from the deck—will be landscaped with approximately 100 shade trees and ornamental trees.

On the Environmental Sciences and Technology Building (EST) site, three “tree save” areas are designated in which eight mature trees will be preserved. A large number of shrubs and smaller trees have already been salvaged by Georgia Tech Landscape Services. In addition, the landscape plan for the EST site calls for 78 new trees to be planted. The EST project also includes a rainwater runoff demonstration project. This plan includes capturing rainwater and reusing it to irrigate the site’s landscape.

Techwood Drive Streetscape

The trees on the east side of Techwood Drive from North Avenue to Bobby Dodd Way are Bradford pears. These pear trees have become favorite roosting places for migrating starlings. As a result, the amount of bird guano has created unsanitary conditions on the pedestrian walks and benches beneath the tree canopy. Georgia Power has pruned half of each tree’s crown to prevent conflict with their overhead utility lines. These 20 trees will be removed and replaced with at least twice the number of crape myrtles.

Future Landscape Plans

In addition to the projects mentioned above, a Landscape Master Plan for the northwest sector of the academic core is in the works—the area west of State Street to Ferst Drive. More than 100 new trees will be planted in this pedestrian open space. In addition, Georgia Tech is planning to convert portions of Cherry Street, Bobby Dodd Way and Atlantic Drive to pedestrian spines, the conversion of which will include planting of new trees.

For more information, contact Nancy Tinker, director, Capital Planning and Space Management, at 894-4799 or nancy.tinker@spaceplan.gatech.edu.



As new construction for the Campus Master Plan moves forward, some trees will be removed, replaced or transplanted. Throughout the process, the goal is to minimize the loss of trees.

PCS closes Research Copy Center

Printing and Copying Services (PCS), Office of Information Technology, is closing the door to its satellite copy center in the Centennial Research Building. The Research Copy Center (RCC), which has served the Office of Sponsored Programs (OSP) and other north campus customers for more than a decade, will close Dec. 24 at 5 p.m.

According to PCS Director Paul Thomas, cost was the deciding factor in closing the facility. “Ever-increasing costs and a sharp decline in demand for onsite printing at RCC have made it impossible to continue operations at this location in a cost-effective manner,” he said.

Although PCS is closing the RCC, current RCC customers will still receive the same quick copy services, as well as expanded services,

from PCS’ 811 Marietta Street central printing facility.

“PCS will donate most of the RCC printing equipment to OSP, and OSP will continue copying services for OSP research proposals and reports in January 2000,” said Thomas. PCS will provide the quick copying services, as well as expanded services, at its central location.

“Our goal is to make the transition of quick copying services as seamless as possible, so we are urging RCC customers to utilize our free pick-up and delivery service,” said Thomas. Customers can call 894-3570 to request this service. For more information, see the PCS web site at <http://www.pcs.gatech.edu>.

Training and development opportunities

The Office of Organizational Development is offering the following courses in January:

- Jan. 10: **Customer Service with (Positive) Attitude!**, 8:30 a.m. – 12:30 p.m., Savant Building, Rm. 308, \$70. Instructor: Mitzie Adams.
- Jan. 11: **Introduction to Word 97**, 8:30 a.m. – 5 p.m., Savant Building, Rm. 203, \$50.
- Jan. 12: **Introduction to Excel 97**, 8:30 a.m. – 5 p.m., Savant Building, Rm. 203, \$50.
- Jan. 13: **Introduction to PowerPoint 97**, 8:30 a.m. – 5 p.m., Savant Building, Rm. 203, \$50.
- Jan. 13: **Brown Bag on How to Organize and Manage Your E-mail Using Eudora**, 11:30 a.m. – 1 p.m., Savant Building, Rm. 308, no charge. Instructor: Shannon Scott.
- Jan. 18: **Telephone Techniques**, 8:30 a.m. – 3:30 p.m., Savant Building, Rm. 308, \$90. Instructor: Debbie Woodham.
- Jan. 19: **Introduction to Access 97**, 8:30 a.m. – 5 p.m., Savant Building, Rm. 203, \$50.
- Jan. 20: **Intermediate Word 97**, 8:30 a.m. – 5 p.m., Savant Building, Rm. 203, \$50.

- Jan. 20: **Customer Service with (Positive) Attitude!**, 8:30 a.m. – 12:30 p.m., Savant Building, Rm. 308, \$70. Instructor: Mitzie Adams.
- Jan. 21: **Excel 97 Data Management**, 8:30 a.m. – 5 p.m., Savant Building, Rm. 203, \$50.
- Jan. 24: **Business Writing Skills**, 8:30 a.m. – 3:30 p.m., Savant Building, Rm. 308, \$90. Instructor: Catherine Hibbard.
- Jan. 27: **Grammar Goes to Work**, 8:30 a.m. – 3:30 p.m., Savant Building, Rm. 308, \$90. Instructor: Connie Glaser.

To register, complete the registration form, which can be found at <http://www.training.gatech.edu/>. Fax the completed form to Wansley Dennis at 894-2666. You will receive an e-mail confirmation when your registration is entered.

To cancel a class, staff members must notify Wansley Dennis at 894-2249 or wansley.dennis@success.gatech.edu five days prior to the start of the course to avoid being charged. When three or more people from one department cancel, they must notify Dennis within 10 days prior to the start of the course.

Campus EVENTS

Arts/Culture

Jan. 11

B.J. Ward's *Stand Up Opera*. In her evening of arias and anecdotes, the singer/comedienne may do more to entertain and demystify the sometimes elitist world of opera than any other performer. 8 p.m., Robert Ferst Center for the Arts. Tickets for faculty/staff: \$30.60, lower level; \$27.20, upper level. Call 894-9600.

Jan. 14, 15

Chicago City Limits, comedy and improvisation theater. Using suggestions from the audience, the troupe creates a unique theatrical experience that ranges from mini-musicals to game shows. Jan. 14, 7 p.m., 10 p.m.; Jan. 15, 7 p.m. James E. Dull Theatre. Tickets for faculty/staff: \$22.10.

Jan. 14 - 16

Smokey Joe's Cafe takes the audience on a trip down memory lane with the songs that defined the '50s and '60s, including "Hound Dog," "Love Potion #9," "Stand By Me," "On Broadway" and "Jailhouse Rock." Jan. 14, 8 p.m.; Jan. 15, 3 p.m., 8 p.m.; Jan. 16, 2 p.m., 7 p.m. All performances at Robert Ferst Center for the Arts. Tickets for faculty/staff: \$38.25, lower level; \$34, upper level. Call 894-9600.

Sports

Dec. 28

Men's basketball, Tech vs. UNC-Greensboro, 7:30 p.m., Alexander Memorial Coliseum. For more information, contact 894-5447 or see www.ramblingwreck.com.

Dec. 29 - 30

Women's basketball, Georgia Tech/Atlanta Marriott Northwest Holiday Invitational. Tech vs. Western Michigan, 2 p.m., Alexander Memorial Coliseum. Campbell vs. Pittsburgh, 4 p.m.

Dec. 30: Consolation game, 2 p.m.; championship, 4 p.m. For more information, contact 894-5447 or see www.ramblingwreck.com.

Jan. 2

Men's basketball, Tech vs. Lafayette, 3 p.m., Alexander Memorial Coliseum.

Jan. 5

Men's basketball, Tech at Kentucky, 7 p.m. Game to air on ESPN.

Miscellaneous

Jan. 6

Techmasters Open Meeting. Guest Tracy Brinkmann from Coca-Cola and winner of the Toastmasters Area Tall Tales Contest will share his Tall Tale and strategies for speaking with humor. Guests are welcome. 7:30 - 9 a.m., Pettit Building (MIRC) Rm. 102. For more information, see the web at <http://spanky.mirc.gatech.tn/> or contact Barry Crouse, membership chair, 894-5735 or barry.crouse@ipst.gatech.edu.

Editor's Note: Calendar items should be e-mailed to denise.noble@icpa.gatech.edu or faxed to The Whistle at 894-7214 at least 10 days prior to desired publication. For more information, contact 894-8324.

Publication note

This is *The Whistle's* last issue of 1999. Look for your next issue Jan. 10, which will feature *The Whistle's* year in review. Happy holidays!



Classifieds

APPLIANCES

Sears Lady Kenmore electric dryer, \$75, good working condition. Bill Miller, 894-4610.

Hamilton Beach 10-blend master blender with ice breaker feature. White. \$15. Rarely used. Leave message at 770-984-1786.

AUTOMOBILES

1990 Toyota Camry DX, auto transmission, pwr steering/breaks/windows/locks, cruise, am/fm/cass, 106K miles, all maintenance records, \$5K OBO. Contact 894-3269 or czhu@sununo.me.gatech.edu.

1991 Honda Civic, 4-dr, 5-spd, needs one headlight, white with black hood, new tires, excellent engine. \$2,000. E-mail carita.reynolds@mgt.gatech.edu.

1991 Honda ST1100. Good shape, low miles. Corbin seat and original seat. Metzler tires. \$5,250. Contact 894-9990, 770-424-8266 or jhuff@ipst.edu.

1991 BMW 318i blk w/ blk lthr int 4 dr. 130K miles, sunroof, new clutch, breaks and tires, \$6,800. Contact 894-9990, 770-424-8266 or jhuff@ipst.edu.

1993 Nissan Sentra XE, 4 dr, black, a/c, only 55K miles, auto, am/fm cass, pwr steering, airbag, cruise control, 1 owner. \$4,750 OBO. Contact 894-9987.

1994 Honda Magna 750, black, 8K miles, windshield, backrest, hi-way pegs, manual, helmet. V.G.C. adult ridden, well

maintained, garaged. \$4,600. Contact 770-389-3366 or sam.mize@cos.gatech.edu.

1994 Honda Accord EX, 4-dr, auto, air, sunroof, CD/cassette, spoiler, dealer serviced, original owner. \$9,700. Call Dan, 770-631-9727.

1997 Chevrolet Silverado extended cab, PW, PL, PM, power seat, tool box, V8, 38K miles, emerald green with tan interior, \$17,500. Contact 770-227-0930 after 6 p.m. or debra.kelley@ee.gatech.edu.

1997 Nissan Sentra GXE, dark gray ext., gray cloth interior, 5-spd, 36K miles, 4-dr, am/fm cassette, dual airbags, a/c, pwr steering/windows/locks, cruise control. \$8,500. Contact john.adams@edi.gatech.edu.

COMPUTERS

Gateway 2000 21" Vivitron Color Monitor, \$575 OBO. Contact Steve, 894-9005 or steve.allen@conted.gatech.edu.

Keyboard for PC: Microsoft Natural Elite (ergonomic), new. Sells for \$60. Asking \$30. Contact Richard, 894-7269 or richard.fuller@gtri.gatech.edu.

HP Jornada 420 Palm-Sized PC, new, unopened. Retail price \$299-\$359; asking \$275. Docking cradle, AC adapter, sync cable, all guides, rechargeable battery, HP PIM software for Windows. Marta Garcia, 894-5505 or marta.garcia@coe.gatech.edu.

Hewlett Packard DeskJet 400 color printer, like new. \$70. Includes original color cartridge (never used) and black ink cartridge. Leave message at 770-984-1786.

FURNITURE

Loft/trundle type bunk beds. Rails on top bunk; both on casters; very sturdy. \$250, mattresses included. 894-3272 (w), 325-2138 (h) or paul.friederich@gtri.gatech.edu.

Black laquer table, 4 chairs, \$60. Will deliver if you can't pick up. E-mail carita.reynolds@mgt.gatech.edu.

Oak student desk with black-cushioned swivel chair. Both only \$55. Desk has 1 small storage shelf on desktop, 1 shelf below. Ideal for small room. You pick up. Leave message at 770-984-1786.

Cargo brand loft bunk bed set. Includes ladder, 2 mattresses, 2 bedspreads. Excellent cond. \$450. Contact 770-528-7758 or mark.richards@gtri.gatech.edu.

REAL ESTATE

For sale: Condo in historic 1920s brick building, 2 miles from Tech. Renovated, 2BR/1BA, hardwoods, high ceilings, lots of windows, custom closets and blinds. Contact camille.chapman@intprog.gatech.edu.

House for sale by owner, East Atlanta. 4 BR, 1 1/2 BA, exercise room, patio, inground pool (18'x36'x10'), new a/c, heat, \$229,000. Special financing avail. Contact 622-7851 or dschneider@ppd1.gatech.edu.

For sale: 3/2.5 townhome, Smyrna. Great room/DR surrounding fireplace, master on 1st, whirlpool bath. Nearly 3,000 sq. ft., 2 rooms on lower level. \$229,900. Betty Noble, 847-7031, or bill.borland@gtri.gatech.edu.

For rent: Charming 2 BR house in Home Park Community, 2 blocks from GA Tech. \$750/month plus security deposit. Faculty or older/grad students preferred. Available 1/1/00. Call 770-427-8666.

1930 Decatur bungalow, totally updated: HVAC, roof, kitchen, 2 BA, fireplaces, hardwoods. 3 BR on main plus bonus room. \$279,900. Contact Betty Noble, 847-7031, or bill.borland@gtri.gatech.edu.

SPORTS/FITNESS/RECREATION

Hobie Cat, 14 ft. with trailer, life vests, paddles. Good condition. \$600 OBO. Contact Chris, 256-4937.

MISCELLANEOUS

New battery-operated wheelchair, \$400 OBO. Contact 770-222-9600 or leonia.collins@business.gatech.edu.

"Door Scope": install where peep hole is and you can see people 7-10 ft from door. Good for those w/ children or for wheelchair disabled persons. \$35. Steve, 894-9005 or steve.allen@conted.gatech.edu.

Percussion set for band student. Snare drum, stand, case, bells, sticks, mallets. \$125. Contact 385-0290 or debbie.pearson@coop.gatech.edu.

Rainbow vacuum cleaner with all attachments plus carpet shampoo attachment. Sells for \$1,484 new, asking \$700. Barbara, 894-7429 or barbara.call@gtri.gatech.edu.

2 JVC VCRs w/ remotes, \$100 for both. Clawfoot tub, \$150. Side-by-side refrig., not sure if it works, free. CD/tape/am-fm unit w/ bookshelf speakers, \$50. 2 Technics speakers, 2' high, each w/ woofer, tweeter, \$50. 894-8728 or gary.phillips@facilities.gatech.edu.

Editor's note: Faculty and staff may submit classified ads via e-mail to whistle.ads@icpa.gatech.edu or fax to 894-7214. The deadline for submissions is 10 days prior to issue date. Ads run for a maximum of three weeks in the order in which they are received. For more information, call 894-8324.