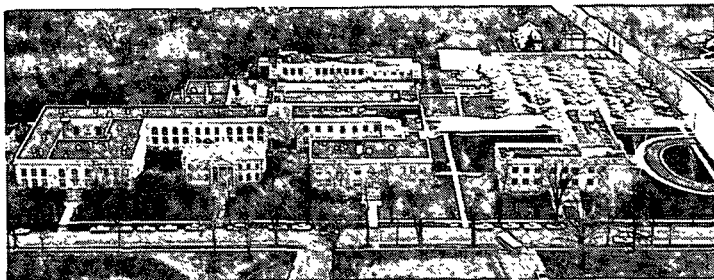


Bill Fisher
742
John K

~~J. Kennedy~~ with
~~info for paper~~
~~file~~
~~1~~
~~trd~~



THE INSTITUTE OF PAPER CHEMISTRY, APPLETON, WISCONSIN

IPC TECHNICAL PAPER SERIES
NUMBER 128

MEASUREMENT OF WOOD/BARK ADHESION IN HARDWOODS

D. W. EINSPAHR, R. H. VAN EPEREN, AND M. L. HARDER

AUGUST, 1982

Measurement of wood/bark adhesion in hardwoods

D. W. Einspahr*

R. H. Van Eperen*

M. L. Harder*

Abstract

Dormant season wood/bark adhesion was determined for 24 hardwood species using a previously described Instron testing machine method. Wood/bark adhesion was compared, using simple and multiple correlation techniques, with bark specific gravity, inner bark strength, bark toughness, wood specific gravity, wood toughness, percent bark fibers, and percent sclereids. Wood/bark adhesion was found to be positively correlated with percent bark fibers, bark toughness, and inner bark strength. Wood/bark adhesion was negatively correlated with percent sclereids in the bark. Morphologically, it appeared that the presence of fibers increased inner bark strength, sclereids decreased inner bark strength, and inner bark strength had a major influence on wood/bark adhesion. A multiple correlation comparison employing wood toughness and inner bark strength accounted for 69% of the wood/bark adhesion encountered.

Introduction

As more and more emphasis is placed on improved wood utilization and increasing numbers of companies turn to whole-tree chipping as a way of maximizing per acre fiber yield, efficient handling of bark and the problems associated with bark become imperative. Species-to-species, tree-to-tree, and within-tree differences in bark are considerable. This variation has made it evident that a single best solution to the bark problem could not be developed and that additional knowledge was needed regarding differences in adhesion between wood and bark of the various pulpwood species.

*The authors are Senior Research Associate and Research Fellows, The Institute of Paper Chemistry, Appleton, WI.

The bark anatomy of common North American pulpwood species has been described by Chang (1). Several investigators (2-5) have discussed the influence of cambium activity and the number of newly formed xylem and phloem cells on ease of peeling. However, little has been done to critically examine morphologically what structures are destroyed in separating wood and bark, either during the "peeling season" or at times when wood/bark adhesion is high. Similarly, little attempt has been made to explain the reasons for differences between species in wood/bark adhesion during the growing season or the dormant season.

With this in mind, the Institute established a program to systematically characterize the most important North American pulpwood species. The objectives were to (1) measure accurately seasonal changes in wood/bark adhesion for 24 hardwoods and (2) examine between-species and seasonal morphological differences in the failure zone in an attempt to correlate morphological differences with measured wood/bark adhesion. In an earlier paper*, the test developed for measuring wood/bark adhesion was described. In this paper, differences found in wood/bark adhesion among the various hardwoods and the simple and multiple correlations run to determine those factors important in bark adhesion are described.

Methods and materials

Sampling techniques were described in a previous paper by Harder et al.*. Briefly, they involved removing a disk or wedge-shaped sample from a tree and preparing small ($3/16 \times 3/16 \times 1-1/4$ inch) tabs which incorporated both wood and bark from the disk or wedge. The tab then had a cut made through both the wood and bark sides with the two cuts overlapping. The distance between the two cuts was $1/8$ -inch, the bottom of the two cuts overlapped 0.010-inch, and the surface area of

the wood/bark interface was 0.0234 square inch or 0.151 square cm. The specimens were mounted in an Instron tester and adhesion measured using shear parallel to the grain. The specimens were then examined to determine where failure had occurred. The anatomical structure of the bark was examined in additional specimens to determine what cell types, structure, and degree of cell differentiation were important in wood/bark adhesion.

Preliminary wood/bark adhesion measurements conducted throughout the year for several tree species made it possible to limit subsequent measurements to twice during the year. This resulted in the establishment of a procedure involving collections from two or three trees during the dormant season and a similar two- or three-tree collection during the growing season. Growing season sampling was discontinued after measurements were completed on 22 species, including both conifers and hardwoods, when little variation was encountered in adhesion values (245-588 kPa). Growing season failure zones quite consistently were located in the cambium zone or in the newly formed and only partially lignified xylem elements just inside the cambium zone.

Additional measurements used in conjunction with the wood/bark adhesion measurements included bark strength, wood and bark toughness, wood and bark specific gravity, percent bark fiber and percent sclereids in the bark. Bark strength measurements were made using essentially the same procedure as used in measuring wood/bark adhesion with the exception that, when inner bark strength was being tested, the cuts in the test specimen were prepared so as to overlap in the inner bark zone. When testing the strength of the outer bark, the cuts were located to overlap in the outer bark region. Wood and bark toughness were measured by using the energy required to rupture a small bark or wood sample by bending with a force parallel to the diameter of the tree and expressed as J/m^2 .

Specific gravity of small wood and bark samples was determined using a water displacement technique that is a modification of TAPPI Standard Method T18 m-53. To obtain percent bark fiber and sclereids, bark from breast high (4.5 feet) samples was micropulped using the procedure of Thode et al. (6). An aliquot of the bark sample was oven dried to provide yield data, and the rest was kept in a wet state and put through a series of screens, including 60-mesh, 100-mesh, 150-mesh, and 200-mesh. The fractions that stayed on each screen plus the fraction that passed through all screens were examined for the type of cellular material they contained.

Results and discussion

Bark variability

After examination of 24 hardwoods, it became obvious that there was significant diversity in the anatomical makeup of hardwood barks. One consistent feature was the presence of sclerenchyma (fiberlike cells and sclereids), but the proportion of these cells in the bark is apparently both species- and age-dependent. The location of sclerenchyma in hardwood bark is given in Table 1.

[Table 1 here]

A particular hardwood bark may contain fibers and/or sclereids, with both cell types being commonly associated with the inner bark. Fibers were found in this zone in all species except red alder, white birch, and sycamore. Sclereids were found in all species examined except eastern cottonwood, yellow-poplar, shagbark hickory, white ash, and black willow. Seven different species of oak were examined, including red and white oaks from both the southern and northern United States. All contained both fibers and sclereids in their inner bark and sclereids in their outer bark (except northern red oak). Thus, bark composition is relatively similar in commercial oaks. Noticeable distinctions can be made between red and white oak

barks, but these are related to the arrangement of the phloem cells and to the morphology of the outer bark or rhytidome.

Wood/bark adhesion measurements

Dormant season wood/bark adhesion is the important parameter associated with debarking problems, and dormant season values were measured for 24 hardwoods. As a result of the measurement data taken and observations made of the failure zone, it became clear that, for hardwoods, dormant season wood/bark adhesion was related to inner bark strength and inner bark morphology.

Hardwood dormant season wood/bark adhesion varied from 3006 kPa for shagbark hickory to 706-765 kPa for white oak. The relationships that exist between hardwood dormant season wood/bark adhesion and bark strength and morphology were examined by running a series of simple and multiple correlations between wood/bark adhesion and wood specific gravity, bark specific gravity, percent bark fiber, percent sclereids, wood toughness, bark toughness, total bark strength, and inner bark strength. Table 2 summarizes parameters important to understanding wood/bark adhesion, and Table 3 summarizes the simple correlation matrix involved. Hardwood wood/bark adhesion was found to be positively correlated with percent bark fibers, wood toughness, bark toughness, inner bark strength, and inner + outer bark strength. Wood/bark adhesion was negatively correlated with the percent sclereids in the bark. Several multiple correlations were run in an effort to determine those variables that would be most useful in estimating wood/bark adhesion. Percent bark fiber, wood toughness, and inner bark strength proved to be the most useful of the variables investigated. Bark toughness was also highly correlated with wood/bark adhesion but was not used in the final multiple correlation because it was correlated with several of the other parameters.

[Table 2 and 3 here]

Table 4 summarizes the data for the four most promising multiple correlation comparisons. Based upon F-tests and R^2 values, comparison II, using wood toughness and inner bark strength, turned out to be the most useful. Use of the variables % fibers and inner bark strength, comparison III, also provided a useful estimate of wood/bark adhesion. The relative importance of the independent variables can be determined by comparing the standard partial regression coefficients (7). When this is done, it becomes apparent that inner bark strength is several times as important as the other independent variables in estimating wood/bark adhesion.

[Table 4 here]

Morphologically, the presence of fibers increases inner bark strength, and when sclereids are present, bark strength is usually lower. Inner bark strength, in turn, has a major influence on dormant-season, hardwood wood/bark adhesion. The multiple correlation comparison employing wood toughness and inner bark strength accounts for 69% of the wood/bark adhesion variation encountered. Use of inner bark strength alone provides almost as much information about wood/bark adhesion as the sample correlations (Table III) demonstrate.

Failure zone examination studies

Bark, particularly that of hardwoods, is rather complex, and, apparently, several factors influence its adhesion to wood. As stated under bark variability, fibers were found in all species examined except red alder, white birch, and sycamore. The presence of fibers tends to increase adhesion during the dormant season, whereas the presence of sclereids has a negative influence on wood/bark adhesion. Species lacking sclereids (eastern cottonwood, yellow-poplar, shagbark hickory, white ash, and black willow) uniformly had high adhesion values, the most extreme example being shagbark hickory, which had the highest adhesion values of any species examined.

Figure 1 shows the seasonal variation in wood/bark adhesion for sugar maple. This adhesion pattern is typical of that usually found in samples examined throughout the year, with failure during the growing season occurring in the newly formed xylem initials just inside the cambium zone and during the dormant season in the inner bark. In addition, ray "pull-out" areas are evident in the August 10 collection. Shown in Figure 2 is an example of adhesion in the oaks, again with growing season adhesion failure in the area of the cambium zone and newly formed xylem initials and dormant season adhesion failure occurring in the inner bark.

[Figures 1 and 2 here]

There are instances where the prediction of wood/bark adhesion for previously little-utilized species is desirable. Through a thorough understanding of bark morphology, it appears that difficult-to-debark species (high wood/bark adhesion) can be identified. This requires information on the presence of fibers and sclereids and the distribution of these sclerenchyma cells in the inner bark as well as a measure of inner bark strength and wood toughness. Several species seem to be exceptions to the rule that fibers increase wood/bark adhesion and sclereids decrease adhesion. These exceptions are the reason there is a low multiple correlation ($R^2 = 0.41$) when only percent fibers and percent sclereids are used to predict wood/bark adhesion. Explanation of the reason for exceptions like silver maple and white birch will require additional examination of the inner bark cell characteristics.

Simple and multiple correlation investigations indicate wood/bark adhesion can be estimated satisfactorily using information on inner bark strength and wood toughness. This suggests there are alternate methods of identifying difficult-to-debark species. Presently, at least one organization is utilizing wood/bark adhesion data to determine drum debarker dimensions. Direct measurement of wood/bark adhesion appears to be a practical measurement technique and a useful research tool.

Literature cited

1. Chang, Y. P. 1954. Anatomy of common North American pulpwood barks. TAPPI Monograph Series No. 14, 249 p.
2. Wilcox, H. E., F. J. Czabator, and G. Girolami. 1954. Season variations in bark-peeling characteristics of some Adirondack pulpwood species. Jour. Forestry 52(5):338-42.
3. Wilcox, H. E., F. J. Czabator, G. Girolami, D. Moreland, and R. Smith. 1956. bark-peeling characteristics of some Adirondack pulpwood species. Jour. Forestry 52(5):338-42.
4. Schutt, C. 1960. Chemical debarking of trees; a review of literature. Paperi ja Puu 11:579-98.
5. Fobes, E. W. 1957. Bark-peeling machines and methods. U.S. Forest Prod. Lab. Publ. No. 1730. 48 p.
6. Thode, E. F., J. R. Peckham, and E. J. Daleski. 1961. An evaluation of certain laboratory pulping methods. Tappi 42(2)81-8.
7. Snedecor, G. W. and Cochran, W. G. 1967. Statistical methods. Sixth edition Iowa State Univ. Press. 539 p.

TABLE 1. - Location of sclerenchyma^a in hardwood bark.

| Tree type | Fibers | | Sclereids | |
|----------------------|-----------------|-----------------|-----------|----|
| | IB ^b | OB ^b | IB | OB |
| Aspen - Quaking | x | -- | x | -- |
| Cottonwood - Eastern | x | -- | -- | -- |
| - Black | x | -- | x | x |
| Maple - Sugar | x | -- | x | -- |
| - Silver | x | -- | x | -- |
| - Red | x | -- | x | -- |
| Sweetgum | x | -- | x | -- |
| Birch - White | -- | -- | x | -- |
| Sycamore | -- | -- | x | -- |
| Yellow-poplar | x | -- | -- | -- |
| Tupelo - Black | x | -- | x | x |
| Ash - White | x | -- | -- | -- |
| - Green | x | x | x | x |
| Beech - American | x | -- | x | x |
| Hickory - Shagbark | x | -- | -- | -- |
| Willow - Black | x | x | -- | -- |
| Oak-white - Northern | x | -- | x | x |
| - Southern | x | -- | x | x |
| - Post | x | -- | x | x |
| Oak-red - Northern | x | -- | x | -- |
| - Southern | x | -- | x | x |
| - Black | x | -- | x | x |
| - Pin | x | -- | x | x |
| Alder - Red | -- | -- | x | -- |

^aTrue fibers of sclereids.^bIB - inner bark, OB - outer bark.

TABLE 2. - Between-species comparisons of wood and bark characteristics.

| Species | Wood/bark Adhesion, kPa | | Inner bark strength, kPa | Wood toughness, J/m ² | Usable bark fiber, % ^b | Total sclereids, % ^c |
|---------------------|--------------------------------|-------------------|-----------------------------------|--|---|---------------------------------------|
| | Peeling season ^a | Dormant season | | | | |
| Quaking aspen | 628 | 1118 | 883 | 441 | 10 | 13.17 |
| Eastern cottonwood | 431 | 1324 | 1736 | 373 | 9 | 0.25 |
| N. black cottonwood | -- | 1834 | 1363 | 294 | 12 | 0.70 |
| Black willow | -- | 1726 | 1020 | 431 | 21 | 1.29 |
| Sugar maple | 569 | 990 | 137 | 1177 | 3 | 15.88 |
| Silver maple | 598 | 1383 | 333 | 490 | 6 | 17.27 |
| Red maple | -- | 1216 | 1108 | 618 | 12 | 5.19 |
| White birch | 500 | 1177 | 157 | 667 | 0 | 22.28 |
| Sycamore | -- | 1451 ^d | 598 | 490 | 0 | 0.03 |
| Sweetgum | -- | 1500 | 794 | 275 | 5 | 2.76 |
| Yellow-poplar | -- | 1628 | 1314 | 226 | 13 | 0.99 |
| Black tupelo | -- | 1324 | 941 | 549 | 5 | 0.34 |
| White ash | -- | 2334 | 1961 | 667 | 16 | 1.02 |
| Green ash | -- | 1706 | 1236 | 628 | 13 | 4.39 |
| Shagbark hickory | 373 | 3001 | 2452 | 1451 | 15 | 0.01 |
| American beech | -- | 912 | 726 | 1000 | 0.2 | 24.24 |
| Red alder | -- | 1275 | 804 | 490 | 0 | 11.04 |
| Post oak | -- | 1196 | 667 | 647 | 4 | 8.30 |
| Pin oak | -- | 1265 | 1030 | 628 | 2 | 10.48 |
| Black oak | -- | 2108 | 1147 | 843 | 5 | 8.91 |
| N. white oak | 471 | 765 | 451 | 608 | 3 | 8.56 |
| S. white oak | -- | 706 | 461 | 961 | 3 | 22.74 |
| N. red oak | 245 | 824 | 206 | 912 | 5 | 12.61 |
| S. red oak | 530 | 804 | 353 | 539 | 4 | 17.75 |

^aDashes mean that adhesion was not measured for those species during the growing season.

^bUsable bark fiber is the amount of fiber retained on the 60- and 100-mesh screens when bark samples were micropulped and screened.

^cTotal sclereids is the amount of sclereids found in the total bark sample when micropulped and screened.

^dSamples failed in tensile.

TABLE 3. - Simple correlations between hardwood wood and bark characteristics^a.

| Variables | (1) | (2) | (3) | (4) | (5) | (6) | (7) | (8) | (9) |
|--------------------------------|-----|-------|--------|--------|---------|--------|--------|--------|---------|
| Wood/bark adhesion (1) | 1.0 | -0.09 | -0.05 | 0.59** | -0.56** | 0.40 | 0.72** | 0.78** | 0.83** |
| Wood specific gravity (2) | | 1.0 | 0.64** | -0.29 | 0.36 | 0.73** | 0.32 | 0.16 | -0.11 |
| Bark specific gravity (3) | | | 1.0 | -0.48* | 0.50 | 0.62** | 0.26 | 0.20 | -0.22 |
| % Bark fibers (4) | | | | 1.0 | -0.60** | -0.03 | 0.51* | 0.45* | 0.68** |
| % Sclereids (5) | | | | | 1.0 | 0.20 | -0.38 | 0.41* | -0.68** |
| Wood toughness (6) | | | | | | 1.0 | 0.65** | 0.63** | 0.29 |
| Bark toughness (7) | | | | | | | 1.0 | 0.92** | 0.68** |
| Bark strength ^b (8) | | | | | | | | 1.0 | 0.76** |
| Inner bark strength (9) | | | | | | | | | 1.0 |

^aValues from 0.404 to 0.515 significant at 0.95 level of probability (*). Values greater than 0.515 significant at 0.99 level of probability (**).

^bAverage of inner and outer bark values.

TABLE 4. - Variables important in estimating hardwood wood/bark adhesion.

| Independent variables | | Standard PRC ^a | F-test ^b | R ² ^c |
|---|---------------------|------------------------------|---------------------|-----------------------------|
| I. | % Fibers | 0.1534 | 0.802 | |
| | Wood toughness | 0.1301 | 1.092 | |
| | Inner bark strength | 0.7064 | 18.38 | 0.70 |
| Regression equation W/B adhesion = $541.5 + 13.95(X_1) + 0.239(X_2) + 0.655(X_3)$ | | | | |
| II. | Wood toughness | 0.1315 | 0.764 | |
| | Inner bark strength | 0.615 | 46.04 | 0.69 |
| Regression equation W/B adhesion = $579.79 + 0.1942(X_1) + 0.7615(X_2)$ | | | | |
| III. | % Fibers | 0.1143 | 0.465 | |
| | Inner bark strength | 0.7497 | 20.66 | 0.69 |
| Regression equation W/B adhesion = $692.7 + 10.39(X_1) + 0.695(X_2)$ | | | | |
| IV. | % Fibers | 0.659 | 15.34 | |
| | Wood toughness | 0.228 | 1.89 | 0.43 |
| Regression equation W/B adhesion = $715.44 + 59.87(X_1) + 0.418(X_2)$ | | | | |

^aStandard partial regression coefficients reflect the relative contribution of the several independent variables to the regression equations.

^bF-test for significance of regression coefficients; values greater than 4.3 are significant at 95% level of probability.

^cR² value greater than 0.36 are highly significant when the number of variables, k = 2; 0.43 values are required when k = 3 (Equation 1).

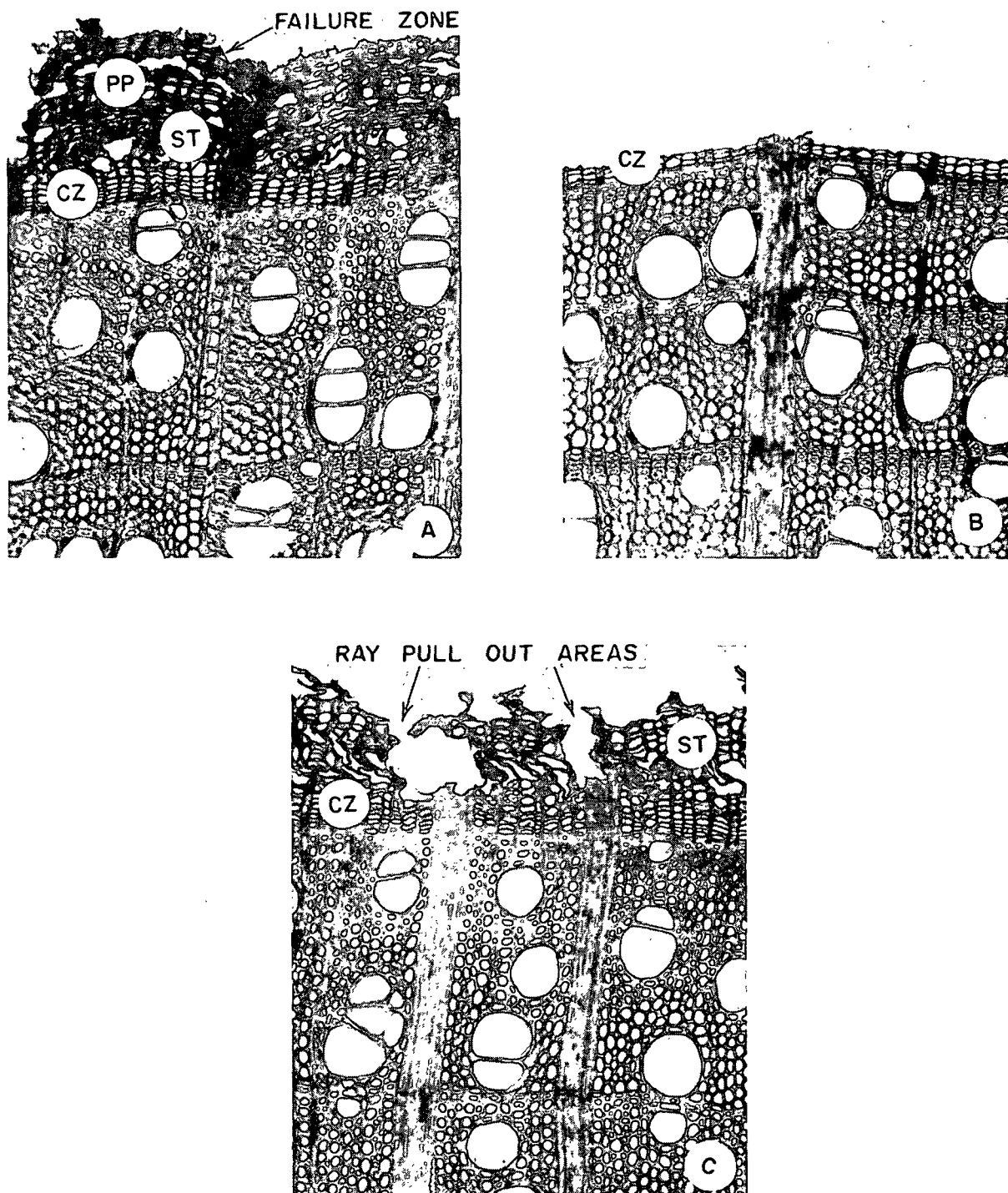


Figure 1. Seasonal changes in the location of the zone of failure in sugar maple; A - May 18 collection, failure in phloem parenchyma and sieve tube area (PP-ST) just outside the cambium zone (CZ); B - June 1 collection, failure in cambium zone (CZ); C - August 10 collection, failure again in the PP-ST area, with failure being influenced by the "pulling out" of phloem rays.

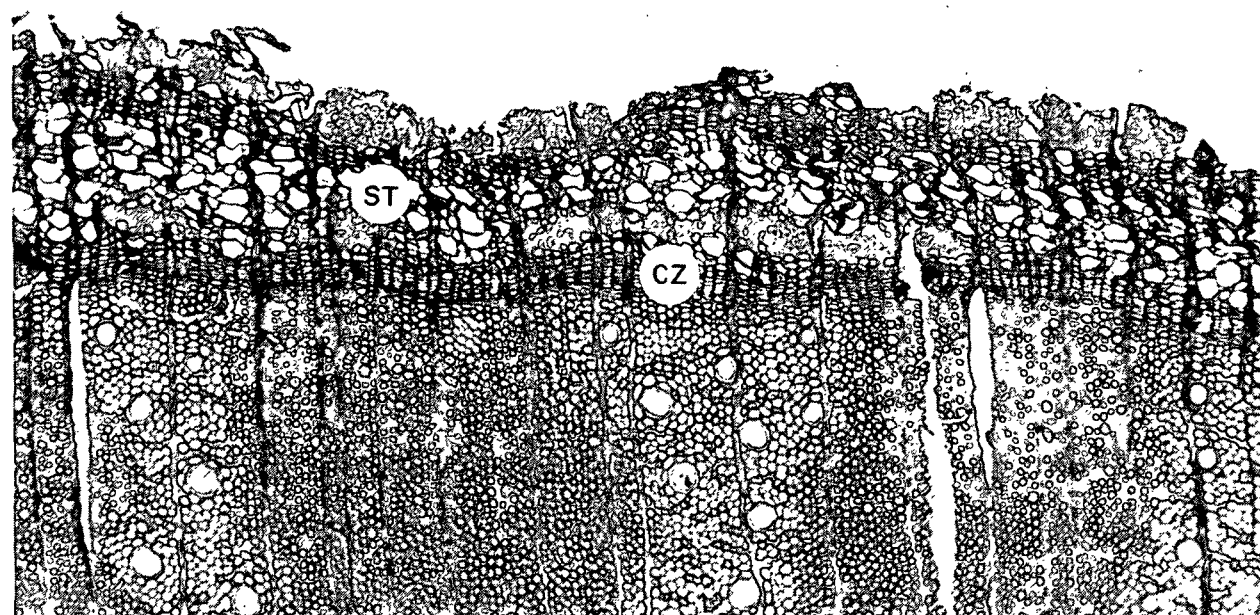
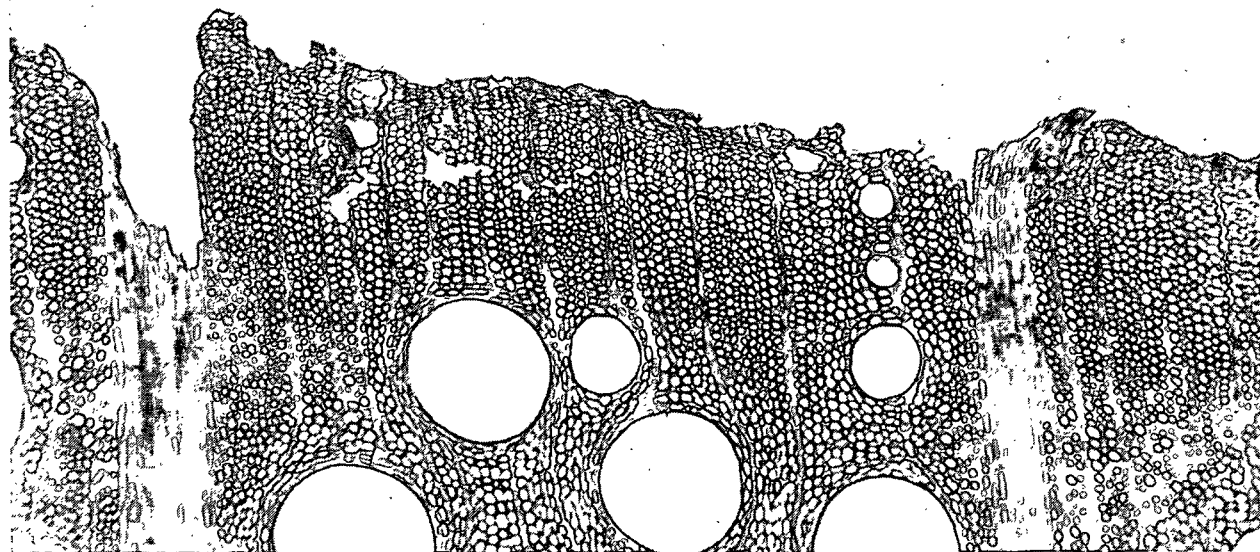


Figure 2. Zones of failure in northern red oak are illustrated for the growing season (top) and dormant season (bottom). The growing season failure zone was located between the cambium zone and the adjacent last-formed immature xylem cells. Failure during the dormant season occurred in the inner bark, primarily between the collapsed phloem sieve tubes and the parenchyma cells adjacent to the more recently formed tangential bands of phloem fibers close to the cambium. Magnification - 75X.