

## SCHOLASTIC ASSESSMENT TEST (SAT) SCORES

**Table 2.1 Averages for Entering Freshmen, Fall Terms 1991-1999\***

Fall Term	Verbal		Math		Composite
	Male	Female	Male	Female	
Georgia Tech Cumulative Enrollment Average SAT					
1991	542	529	661	618	1,203
1992	558	549	674	633	1,226
1993	559	552	679	638	1,232
1994	562	563	681	646	1,233
1995	560	563	679	646	1,232
1996	623	627	683	653	1,298
1997	631	633	681	652	1,305
1998	626	625	678	646	1,296
1999	630	628	684	650	1,304

**Table 2.2 Averages for Entering Freshmen, Academic Years 1989-90 to 1998-99\***

Year	Verbal		Math		Composite
	Male	Female	Male	Female	
Georgia Tech Cumulative Enrollment Average SAT					
1989-90	536	520	649	607	1,172
1990-91	538	529	655	625	1,183
1991-92	541	529	660	617	1,187
1992-93	558	548	673	634	1,218
1993-94	554	548	675	633	1,218
1994-95	553	555	671	637	1,215
1995-96	619	624	659	637	1,281
1996-97	613	618	660	636	1,268
1997-98	624	628	673	647	1,291
1998-99	620	615	672	638	1,281

Year	Verbal		Math		Composite
	Male	Female	Male	Female	
	National Average SAT				
1989-90	429	419	499	455	900
1990-91	426	418	497	453	896
1991-92	428	419	499	456	899
1992-93	428	420	502	457	904
1993-94	425	421	501	460	902
1994-95	429	426	503	463	910
1995-96	507	503	527	492	1,014
1996-97	507	503	530	494	1,016
1997-98	509	502	531	496	1,017
1998-99	509	502	531	495	1,016

\* Effective 1996, reported SAT scores are recentered.





## ADMISSIONS

**Table 2.3 Freshman Admissions**

	Number Applied	Number Accepted	% of Applied Accepted	Number Enrolled	% of Applied Enrolled	% of Accepted Enrolled
Year and College, Fall Terms 1995-1999						
<b>1995</b>						
Architecture	521	227	44%	89	17%	39%
Computing	505	306	61%	163	32%	53%
Engineering	4,646	2,972	64%	1,197	26%	40%
Ivan Allen	604	359	59%	158	26%	44%
Sciences	1,129	761	67%	243	22%	32%
<b>Total</b>	<b>7,405</b>	<b>4,625</b>	<b>62%</b>	<b>1,850</b>	<b>25%</b>	<b>40%</b>
<b>1996</b>						
Architecture	539	213	40%	90	17%	42%
Computing	624	335	54%	176	28%	53%
Engineering	4,806	2,759	57%	1,156	24%	42%
Ivan Allen	690	345	50%	154	22%	45%
Sciences	1,234	752	61%	267	22%	36%
<b>Total</b>	<b>7,893</b>	<b>4,404</b>	<b>56%</b>	<b>1,843</b>	<b>23%</b>	<b>42%</b>
<b>1997</b>						
Architecture	512	241	47%	108	20%	45%
Computing	682	396	58%	195	29%	49%
Engineering	4,673	2,957	63%	1,122	24%	38%
Ivan Allen	715	404	57%	176	25%	44%
Sciences	1,055	676	64%	220	21%	33%
Special Non-Degree	39	28	72%	27	69%	96%
<b>Total</b>	<b>7,676</b>	<b>4,702</b>	<b>61%</b>	<b>1,848</b>	<b>24%</b>	<b>39%</b>
<b>1998</b>						
Architecture	392	267	68%	124	32%	46%
Computing	819	606	74%	299	37%	49%
Engineering	4,150	3,142	76%	1,357	33%	43%
Ivan Allen	375	261	70%	108	29%	41%
Management	187	124	66%	72	39%	58%
Sciences	915	733	80%	231	25%	32%
Special Non-Degree	17	15	88%	15	88%	100%
<b>Total</b>	<b>6,855</b>	<b>5,148</b>	<b>75%</b>	<b>2,206</b>	<b>32%</b>	<b>43%</b>
<b>1999</b>						
Architecture	432	240	56%	109	25%	45%
Computing	1,021	647	63%	343	34%	53%
Engineering	4,476	3,172	71%	1,394	31%	44%
Ivan Allen	345	229	66%	91	26%	40%
Management	288	178	62%	103	36%	58%
Sciences	1,021	730	71%	267	26%	37%
Special Non-Degree	19	14	74%	11	58%	79%
<b>Total</b>	<b>7,602</b>	<b>5,210</b>	<b>69%</b>	<b>2,318</b>	<b>30%</b>	<b>44%</b>
Ethnic Origin, Fall Semester 1999						
Asian	1,249	788	63%	370	30%	47%
Black	1,102	374	34%	139	13%	37%
Hispanic	315	157	50%	47	15%	30%
Native American	13	9	69%	1	8%	11%
White	4,652	3,749	81%	1,712	37%	46%
Multiracial	190	114	60%	49	26%	43%
Declined Submission	81	19				
Gender, Fall Semester 1999						
Male	5,391	3,676	68%	1,656	31%	45%
Female	2,188	1,534	70%	662	30%	43%

Source: Office of Undergraduate Admissions

## ADMISSIONS

**Table 2.4 Transfer Admissions**

	Number Applied	Number Accepted	% of Applied Accepted	Number Enrolled	% of Applied Enrolled	% of Accepted Enrolled
Year and College, Fall Terms 1995-99						
<b>1995</b>						
Architecture	91	16	18%	16	18%	100%
Computing	106	39	37%	31	29%	79%
Engineering	589	285	48%	229	39%	80%
Ivan Allen	101	24	24%	23	23%	96%
Sciences	180	104	58%	82	46%	79%
<b>Total</b>	<b>1,067</b>	<b>468</b>	<b>44%</b>	<b>381</b>	<b>36%</b>	<b>81%</b>
<b>1996</b>						
Architecture	89	20	23%	20	22%	100%
Computing	122	43	35%	37	30%	86%
Engineering	724	308	43%	251	35%	81%
Ivan Allen	123	30	24%	26	21%	87%
Sciences	210	121	58%	79	38%	65%
<b>Total</b>	<b>1,268</b>	<b>522</b>	<b>41%</b>	<b>413</b>	<b>33%</b>	<b>79%</b>
<b>1997</b>						
Architecture	92	23	25%	20	22%	87%
Computing	83	30	36%	23	27%	77%
Engineering	483	239	49%	205	42%	86%
Ivan Allen	103	37	36%	32	31%	86%
Sciences	72	27	38%	19	26%	70%
Special Non-Degree	33	27	82%	24	73%	89%
<b>Total</b>	<b>866</b>	<b>383</b>	<b>44%</b>	<b>323</b>	<b>37%</b>	<b>84%</b>
<b>1998</b>						
Architecture	63	26	41%	22	35%	85%
Computing	111	43	39%	37	33%	86%
Engineering	568	341	60%	291	51%	85%
Ivan Allen	32	8	25%	6	19%	75%
Management	51	15	29%	12	24%	80%
Sciences	88	45	51%	32	36%	71%
Special Non-Degree	38	30	79%	21	55%	70%
<b>Total</b>	<b>951</b>	<b>508</b>	<b>54%</b>	<b>421</b>	<b>44%</b>	<b>82%</b>
<b>1999</b>						
Architecture	79	15	19%	9	11%	60%
Computing	148	53	36%	43	29%	81%
Engineering	732	389	53%	316	43%	81%
Ivan Allen	46	11	24%	8	17%	73%
Management	69	34	49%	31	45%	91%
Sciences	103	45	44%	34	33%	76%
Special Non-Degree	28	18	64%	14	50%	78%
<b>Total</b>	<b>1,205</b>	<b>565</b>	<b>47%</b>	<b>455</b>	<b>38%</b>	<b>81%</b>
Ethnic Origin, Fall Semester 1999						
Asian	239	106	44%	82	34%	77%
Black	266	123	46%	106	40%	86%
Hispanic	62	23	37%	17	27%	74%
Native American	2	1	50%	1	50%	100%
White	600	302	50%	240	40%	79%
Multiracial	22	10	45%	9	41%	90%
Gender, Fall Semester 1999						
Male	874	402	46%	320	37%	80%
Female	331	163	49%	135	41%	83%



Source: Office of Undergraduate Admissions



## ADMISSIONS

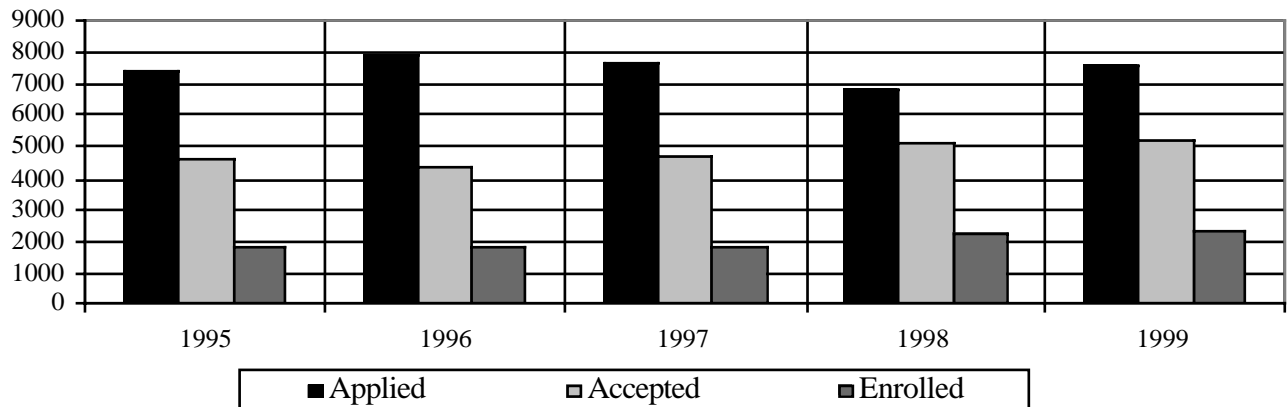
**Table 2.5 Graduate Admissions**

	Number Applied	Number Accepted	% of Applied Accepted	Number Enrolled	% of Applied Enrolled	% of Accepted Enrolled
Year and College, Fall Terms 1995-99						
<b>1995</b>						
Architecture	386	141	37%	90	23%	64%
Computing	232	81	35%	40	17%	49%
Engineering	2,652	1,205	45%	520	20%	43%
Ivan Allen	607	286	47%	153	25%	53%
Sciences	532	182	34%	96	18%	53%
<b>Total</b>	<b>4,409</b>	<b>1,895</b>	<b>43%</b>	<b>899</b>	<b>20%</b>	<b>47%</b>
<b>1996</b>						
Architecture	385	181	47%	92	24%	51%
Computing	280	99	35%	47	17%	47%
Engineering	2,705	1,212	45%	589	22%	49%
Ivan Allen	776	314	40%	159	20%	51%
Sciences	483	198	31%	77	16%	52%
<b>Total</b>	<b>4,629</b>	<b>1,954</b>	<b>42%</b>	<b>964</b>	<b>21%</b>	<b>49%</b>
<b>1997</b>						
Architecture	303	172	57%	81	27%	47%
Computing	330	140	42%	65	20%	46%
Engineering	2,916	1,251	43%	565	19%	45%
Ivan Allen	721	318	44%	123	17%	39%
Sciences	509	178	35%	102	20%	57%
<b>Total</b>	<b>4,779</b>	<b>2,059</b>	<b>43%</b>	<b>936</b>	<b>20%</b>	<b>45%</b>
<b>1998</b>						
Architecture	322	198	61%	95	30%	48%
Computing	357	111	31%	64	18%	58%
Engineering	2,840	1,338	47%	630	22%	47%
Ivan Allen	223	122	55%	61	27%	50%
Management	440	227	52%	107	24%	47%
Sciences	349	165	47%	114	33%	69%
<b>Total</b>	<b>4,531</b>	<b>2,161</b>	<b>48%</b>	<b>1,071</b>	<b>24%</b>	<b>50%</b>
<b>1999</b>						
Architecture	329	200	61%	99	30%	50%
Computing	443	201	45%	95	21%	47%
Engineering	2,998	1,429	48%	710	24%	50%
Ivan Allen	239	124	52%	61	26%	49%
Management	433	198	46%	107	25%	54%
Sciences	360	167	46%	118	33%	71%
<b>Total</b>	<b>4,802</b>	<b>2,319</b>	<b>48%</b>	<b>1,190</b>	<b>25%</b>	<b>51%</b>
Ethnic Origin, Fall Semester 1999						
Asian	2,428	843	35%	403	17%	48%
Black	345	144	42%	82	24%	57%
Hispanic	180	96	53%	62	34%	65%
Native American	6	4	67%	2	33%	50%
White	1,797	1,203	67%	626	35%	52%
Multiracial	46	29	63%	15	33%	52%
Gender, Fall Semester 1999						
Male	3,583	1,718	48%	869	24%	51%
Female	1,219	601	49%	321	26%	53%

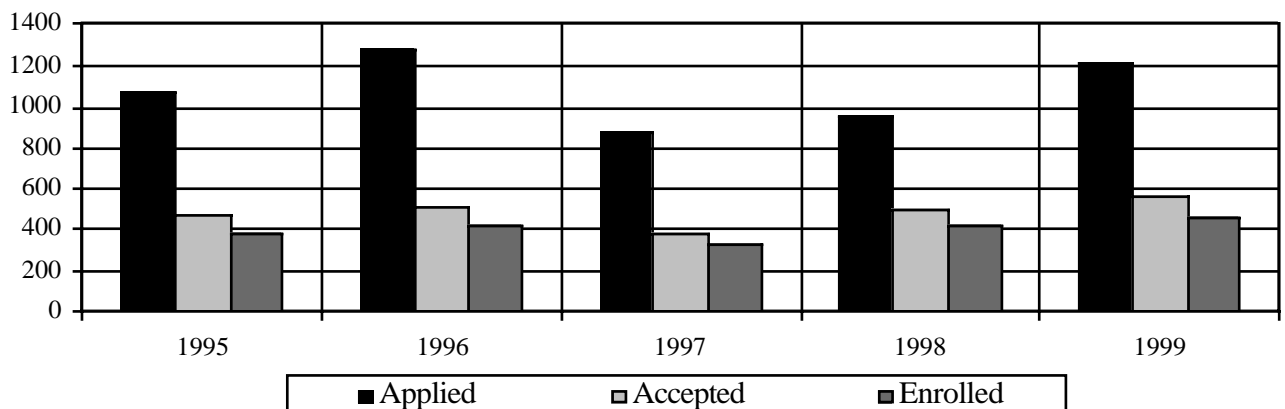
Source: Graduate Academic and Enrollment Services

## ADMISSIONS

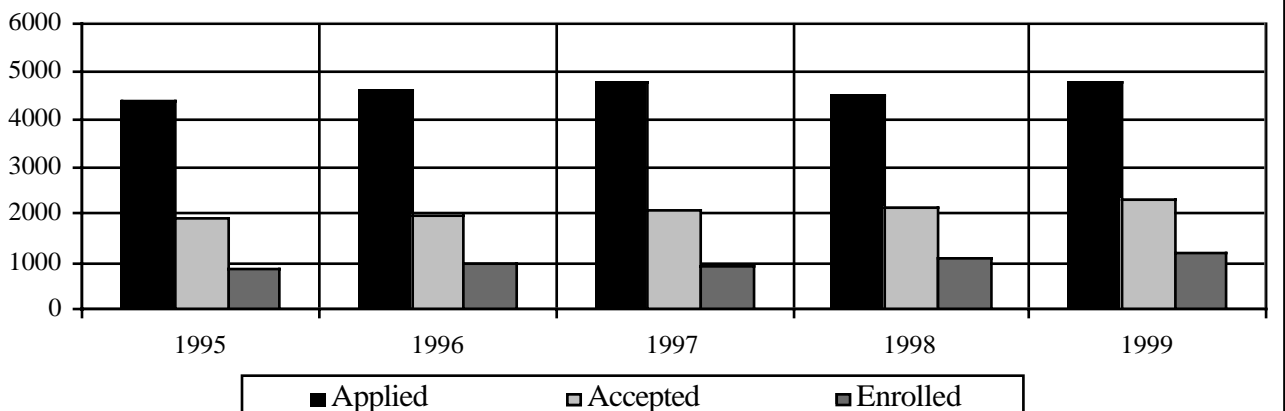
**Fig. 2.1 Freshman Applicants by Admission Status  
Fall Terms 1995 - 1999**



**Fig. 2.2 Transfer Applicants by Admission Status  
Fall Terms 1995 - 1999**



**Fig. 2.3 Graduate Applicants by Admission Status  
Fall Terms 1995 - 1999**





## ADMISSIONS

**Table 2.6 Sources of Ten or More Entering Freshmen, Fall Semester 1999**

High School	Location	Number of Students
Chattahoochee	Alpharetta, GA	49
Parkview	Lilburn, GA	42
Lassiter	Marietta, GA	42
George Walton Comprehensive	Marietta, GA	35
Brookwood	Snellville, GA	34
Alan C. Pope	Marietta, GA	32
Roswell	Roswell, GA	30
Milton	Alpharetta, GA	29
McIntosh	Peachtree City, GA	27
Harrison	Kennesaw, GA	27
Lakeside	Evans, GA	22
Wheeler	Marietta, GA	22
Lakeside	Atlanta, GA	21
Dunwoody	Dunwoody, GA	19
Saint Pius X	Atlanta, GA	18
Norcross	Norcross, GA	17
Woodward Academy	College Park, GA	17
Sandy Creek	Tyrone, GA	17
Collins Hill	Suwanee, GA	17
The Marist School	Atlanta, GA	16
Duluth	Duluth, GA	16
Evans	Evans, GA	16
Fayette County	Fayetteville, GA	15
North Cobb	Kennesaw, GA	15
Salem	Conyers, GA	15
Centennial	Roswell, GA	14
South Gwinnett	Snellville, GA	13
The Westminster Schools	Atlanta, GA	12
Sprayberry Senior	Marietta, GA	12
Lovejoy	Lovejoy, GA	12
Herschel Jenkins	Savannah, GA	12
McEachern	Powder Springs, GA	11
Chamblee	Chamblee, GA	10
Berkmar	Lilburn, GA	10
Eagles Landing	McDonough, GA	10
North Gwinnett	Suwanee, GA	10

## FINANCIAL AID

**Table 2.7 Student Financial Aid Awards, Fiscal Year 1998-99\***

Award	Number of Awards	Amount of Awards
<b><u>Georgia Tech Awarded Aid</u></b>		
Pell Grants	1,639	\$2,956,435
Supplemental Educational Opportunity Grants	378	398,332
Federal Work-Study Program	220	322,358
Perkins Loans	272	620,153
Stafford Loans - subsidized	5,250	13,382,363
Stafford Loans - unsubsidized	3,411	9,062,206
Parent Loans Undergraduate Students (PLUS)	996	6,016,371
<b>Subtotal Federal Funds</b>	<b>12,166</b>	<b>\$32,758,218</b>
Hope Scholarships	4,282	\$12,131,691
Georgia Student Incentive Grants	26	17,135
Regents Scholarships	5	3,500
<b>Subtotal State Funds</b>	<b>4,313</b>	<b>\$12,152,326</b>
Georgia Tech National Merit	559	\$545,032
Georgia Tech National Achievement	34	46,501
<b>Subtotal National Merit/Achievement</b>	<b>593</b>	<b>\$591,533</b>
Institutional Scholarships	2,862	\$4,221,300
Georgia Tech Long Term Loans	76	208,066
Short Term Loans	656	930,707
<b>Subtotal Institutional Scholarships/Loans</b>	<b>3,594</b>	<b>\$5,360,073</b>
<b>Total Georgia Tech Awarded Aid</b>	<b>20,666</b>	<b>\$50,862,150</b>
<b><u>Outside Awards</u></b>		
Miscellaneous Scholarships/Grants	951	\$2,159,741
Georgia Governor's Scholarships	744	1,118,124
ROTC Scholarships	135	966,596
Robert C. Byrd Scholarships	213	287,000
Miscellaneous Loans	168	1,008,277
<b>Total Outside Aid</b>	<b>2,211</b>	<b>\$5,539,738</b>
<b>Total Awards</b>	<b>22,877</b>	<b>\$56,401,888</b>

\* Due to semester conversion, awards cover a five quarter period.





## FINANCIAL AID

### President's Scholarship Program

The President's Scholarship Program is Georgia Tech's premier merit-based scholarship. Since its inception in 1981, the program has maintained as its objective, the selection and enrollment of students who have demonstrated excellence in academic and leadership performance and have a strong potential to become leaders on campus and in the community. The scholarship offers two levels of awards—the President's level and the Institute level. For the 1999 competition (for students who entered Georgia Tech as freshmen in summer or fall of 1999), the four-year award amounts for the two levels are: Georgia resident: \$24,000 and \$12,000; non-Georgia resident: \$42,000 and \$22,000.

Two significant changes were made in the selection process beginning with the 1997-98 academic year competition: there is no longer a separate application for the President's Scholarship, nor is there a minimum required SAT or ACT score to qualify for the competition. To apply for the President's Scholarship, a student must submit the Georgia Tech application for admission by October 31, 1999. The most qualified applicants in terms of high school grades, standardized test scores, and demonstrated leadership and involvement in activities will be selected as scholarship semifinalists. Each semifinalist will be sent a supplemental application in December and will be interviewed by a Regional Committee in January. Approximately 140 of the top-ranked candidates in the competition will be invited as finalists to attend the President's Scholarship Weekend on campus March 24-25, 2000.

**Table 2.8 President's Scholarship Program Summary, 1990-91 through 1999-00**

Entering Year	Mean HSA*	Mean SAT**	Georgia		Out-of-State		Total
			Male	Female	Male	Female	
1990-91	3.9	1427	34	14	19	4	71
1991-92	3.9	1418	31	14	11	4	60
1992-93	3.9	1435	19	9	13	7	48
1993-94	3.9	1440	27	4	13	4	48
1994-95	3.9	1437	21	12	19	8	60
1995-96	3.9	1431	33	10	15	10	68
1996-97	3.9	1413	38	18	11	6	73
1997-98	3.9	1484	24	11	21	9	65
1998-99	4.0	1419	18	29	26	13	86
1999-00	3.9	1412	16	19	26	20	81

ACT: American College Testing

\* HSA: High School Average

\*\*SAT: Scholastic Assessment Test

### HOPE Scholarship Program

HOPE -- **H**elping **O**utstanding **P**upils **E**ducationally -- is Georgia's unique program, created by Governor Zell Miller, that rewards students' hard work with financial assistance in degree, diploma, or certificate programs at any eligible Georgia public, or private college, university, or public technical institute. Additionally, other HOPE assistance is available for students who received a GED after July 1, 1993. HOPE is funded by Georgia's Lottery for Education.

**Table 2.9 HOPE Scholarship Program Summary, 1993-94 through 1999-00**

Year	Number	Amount
1993-94	593	\$855,748
1994-95	2,078	\$4,181,037
1995-96	3,151	\$7,097,070
1996-97	3,490	\$8,369,368
1997-98	3,835	\$9,551,109
1998-99	4,242	\$11,160,897
1999-00*	3,945	\$12,874,658

\*This figure reflects current awards, not expenditures



## FINANCIAL AID

Table 2.10 National Merit and Achievement Scholars

All Institutions			Public Institutions			
Rank	Institution	# of Scholars	Rank	Institution	Freshman Enrollment	# of Scholars % of Class
National Merit Scholars, 1998-99 Academic Year						
1.	Harvard University	394	1.	University of California - Berkeley	3,735	235 6.29%
2.	University of Texas - Austin*	244	2.	University of Florida	3,468	176 5.07%
3.	University of California - Berkeley*	235	3.	<b>Georgia Institute of Technology</b>	<b>2,206</b>	<b>100 4.53%</b>
4.	Stanford University	229	4.	University of Oklahoma	3,050	136 4.46%
5.	Rice University	183	5.	University of Texas - Austin	6,598	244 3.70%
6.	Texas A & M University*	181	6.	Iowa State University	3,800	116 3.05%
7.	University of Florida*	176	7.	University of Kansas	3,702	101 2.73%
8.	Yale University	170	8.	Arizona State University	4,943	132 2.67%
9.	University of Chicago	139	9.	Texas A & M University	7,306	181 2.48%
10.	University of Oklahoma*	136	10.	Ohio State University	6,121	109 1.78%
11.	Massachusetts Institute of Technology	133				
12.	Arizona State University*	132				
13.	Washington University	131				
14.	Brigham Young University	130				
15.	Northwestern University	128				
16.	New York University	125				
17.	University of Southern California	122				
18.	Iowa State University*	116				
19.	Princeton University	111				
20.	Ohio State University*	109				
21.	University of Kansas*	101				
22.	<b>Georgia Institute of Technology*</b>	<b>100</b>				
National Achievement Scholars, 1998-99 Academic Year						
1.	Harvard University	63	1.	Florida A & M University	1,851	43 2.32%
2.	Stanford University	44	2.	University of Florida	3,468	32 0.92%
3.	Florida A & M University*	43	3.	<b>Georgia Institute of Technology</b>	<b>2,206</b>	<b>17 0.77%</b>
4.	Howard University	41	4.	University of Alabama	2,604	14 0.54%
5.	University of Florida*	32	5.	Florida State University	5,145	23 0.45%
6.	Yale University	31	6.	University of Oklahoma	3,050	12 0.39%
7.	Princeton University	27	7.	University of North Carolina - C. H.	3,437	13 0.38%
8.	Florida State University	23	8.	University of Virginia	2,903	9 0.31%
9.	Massachusetts Institute of Technology	22				
10.	Duke University	20				
11.	<b>Georgia Institute of Technology*</b>	<b>17</b>				
	New York University	17				

\* Public Institution





## FINANCIAL AID

### Graduate Financial Assistance

#### Regents' Opportunity Scholarships

Georgia Tech has participated in the Regents' Opportunity Scholarship Program since 1978. Since then, 133 African-Americans, 6 Hispanics, 1 Native American, and 85 non-minority persons have been supported on Regents' Opportunity Scholarships. Twenty of these students have completed the Ph.D. degree, and 122 have received Master's degrees. Fourteen Regents' Scholars were enrolled in 1998-99.

#### President's Fellowship Program

President's Fellowships were established in 1973 to enhance the scope and quality of Georgia Tech's Ph.D. programs. Through support of the Georgia Tech Foundation, President's Fellowships are offered annually to a select number of highly qualified U.S nationals who intend to pursue doctoral degrees. President's Fellowships provide \$5,000 stipends, which supplement other support offered by the academic units. Since the inception of the President's Fellowship Program in Fall Quarter 1973, 1,075 awards have been made. As of Spring Quarter 1999, 246 were enrolled in the program.

#### Domenica Rea D'Onofrio Graduate Fellowships

Approximately \$12,740 per year may be awarded in this fellowship program to native born citizens of Italy. Three Italian students were supported on this fellowship in 1998-99.

#### Tuition Waivers

Outstanding students who are not residents of Georgia may receive out-of-state tuition waivers. Approximately 150 of these are awarded annually.

**Table 2.11 President's Fellowship Survey, as of Fiscal Year 1999**

Fiscal Year	Number of New Fellows	Number Awarded Terminal M.S.	Number Awarded Ph.D.	Number Awarded Ph.D./M.S.	Ph.D.'s Completed by Fiscal Year	Number Enrolled Spring 1999
1973-89	335	146	149	79	25	2
1989-90	67	29	30	17	11	4
1990-91	90	35	47	26	15	5
1991-92	81	30	44	27	15	2
1992-93	74	21	44	31	34	11
1993-94	73	30	26	19	31	17
1994-95	72	28	16	8	40	34
1995-96	70	19	5	4	43	46
1996-97	78	26	2	2	44	55
1997-98	65	4	1	1	43	64
1998-99	70	0	0	0	43	107

## ENROLLMENT

**Table 2.12 Students Enrolled by Country of Residence, Fall Semester 1999**

Country	Undergraduate	Graduate	Total	Country	Undergraduate	Graduate	Total
Albania	0	1	1	Kenya	5	1	6
Algeria	0	1	1	Kiribati	1	0	1
Anguilla	1	1	2	Korea, Demo People (North)	1	0	1
Argentina	3	11	14	Korea, Republic of (South)	29	221	250
Armenia	0	1	1	Kuwait	2	1	3
Austria	0	2	2	Kyrgyzstan	0	3	3
Azerbaijan	1	0	1	Laos	1	0	1
Bahamas (The)	2	0	2	Lebanon	4	4	8
Bahrain	2	0	2	Macedonia	0	1	1
Bangladesh	10	11	21	Malaysia	11	4	15
Barbados	0	1	1	Mauritius	0	2	2
Belgium	0	2	2	Mexico	1	24	25
Belize	0	2	2	Morocco	3	0	3
Benin	0	3	3	Nepal	1	1	2
Bermuda	1	1	2	Netherlands	0	4	4
Bolivia	3	0	3	New Zealand	0	2	2
Brazil	5	12	17	Nicaragua	1	0	1
British Virgin Islands	1	0	1	Nigeria	14	5	19
Bulgaria	0	3	3	Norway	0	6	6
Cameroon	3	2	5	Pakistan	28	19	47
Canada	4	18	22	Panama	9	5	14
Chile	1	2	3	Paraguay	1	0	1
China	12	309	321	Peru	1	6	7
Colombia	3	15	18	Philippines	1	5	6
Costa Rica	5	3	8	Poland	0	1	1
Croatia	0	1	1	Romania	0	12	12
Cyprus	1	1	2	Russia	0	16	16
Denmark	0	1	1	Saint Lucia	1	0	1
Ecuador	5	3	8	Saudi Arabia	0	7	7
Egypt	0	7	7	Sierra Leone	1	0	1
El Salvador	1	2	3	Singapore	7	8	15
Eritrea	0	2	2	South Africa	4	0	4
Estonia	0	1	1	Spain	1	7	8
Ethiopia	0	1	1	Sri Lanka	1	2	3
Finland	2	0	2	Sudan	1	0	1
France	8	72	80	Suriname	1	0	1
Gambia (The)	0	1	1	Sweden	4	2	6
Georgia	0	1	1	Switzerland	2	4	6
Germany	6	11	17	Syria	1	0	1
Germany, Federal Rep of	1	29	30	Taiwan	10	50	60
Ghana	10	5	15	Tanzania	2	0	2
Greece	2	5	7	Thailand	5	46	51
Guatemala	0	2	2	Trinidad and Tobago	5	4	9
Guinea	1	0	1	Tunisia	0	2	2
Haiti	1	1	2	Turkey	6	67	73
Honduras	3	0	3	Uganda	0	1	1
Hong Kong	4	6	10	Ukraine	2	3	5
India	93	185	278	USSR	1	4	5
Indonesia	12	17	29	United Arab Emirates	6	0	6
Iran	2	12	14	United Kingdom/Gr Britain	10	12	22
Iraq	1	0	1	Uruguay	1	0	1
Ireland	0	1	1	Uzbekistan	1	0	1
Israel	2	3	5	Venezuela	5	17	22
Italy	1	10	11	Vietnam	4	0	4
Jamaica	6	3	9	Yugoslavia	1	9	10
Japan	4	21	25	Zaire	1	0	1
Jordan	2	4	6				
Kazakhstan	0	1	1	<b>Total</b>	<b>423</b>	<b>1,398</b>	<b>1,821</b>





## ENROLLMENT

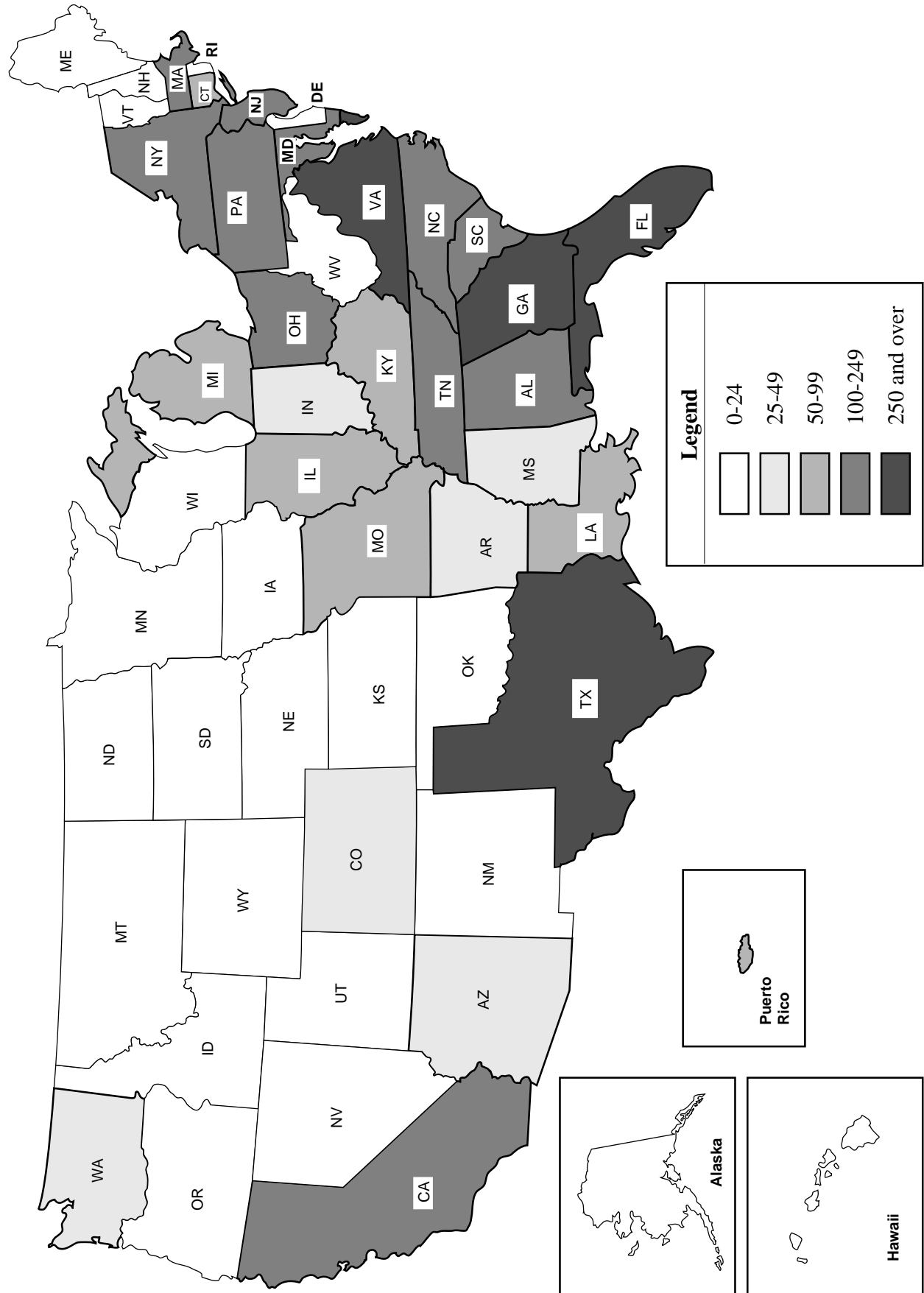
**Table 2.13 Students Enrolled by State of Residence, Fall Semester 1999**

State	Undergraduate			Male	Graduate		Institute Total
	Male	Female	Total		Female	Total	
Alaska	4	1	5	3	1	4	9
Alabama	136	39	175	48	17	65	240
Arizona	6	6	12	7	6	13	25
Arkansas	17	6	23	8	3	11	34
California	47	28	75	60	21	81	156
Colorado	13	8	21	8	4	12	33
Connecticut	43	9	52	6	2	8	60
Delaware	6	1	7	4	1	5	12
District of Columbia	4	2	6	6	5	11	17
Florida	483	124	607	143	39	182	789
Georgia	4,648	2,220	6,868	692	296	988	7,856
Hawaii	2	2	4	1	0	1	5
Idaho	3	1	4	2	0	2	6
Illinois	44	13	57	23	11	34	91
Indiana	8	5	13	12	7	19	32
Iowa	6	3	9	7	3	10	19
Kansas	10	2	12	4	3	7	19
Kentucky	33	11	44	6	6	12	56
Louisiana	37	11	48	25	8	33	81
Maine	5	1	6	4	0	4	10
Maryland	100	33	133	29	23	52	185
Massachusetts	70	11	81	24	10	34	115
Michigan	15	11	26	22	17	39	65
Minnesota	7	2	9	9	1	10	19
Mississippi	23	8	31	8	8	16	47
Missouri	23	8	31	16	4	20	51
Montana	4	1	5	4	0	4	9
Nebraska	8	2	10	4	2	6	16
Nevada	5	3	8	2	0	2	10
New Hampshire	10	7	17	2	2	4	21
New Jersey	98	26	124	30	17	47	171
New Mexico	2	1	3	11	2	13	16
New York	98	34	132	68	19	87	219
North Carolina	117	30	147	58	20	78	225
North Dakota	0	0	0	1	1	2	2
Ohio	54	16	70	36	10	46	116
Oklahoma	5	1	6	5	8	13	19
Oregon	2	4	6	6	2	8	14
Pennsylvania	86	19	105	36	13	49	154
Rhode Island	11	1	12	4	1	5	17
South Carolina	143	42	185	37	9	46	231
South Dakota	2	0	2	1	0	1	3
Tennessee	140	29	169	63	16	79	248
Texas	129	58	187	73	27	100	287
Utah	2	0	2	7	4	11	13
Vermont	1	2	3	5	1	6	9
Virginia	143	43	186	57	23	80	266
Washington	16	3	19	14	2	16	35
West Virginia	9	1	10	6	4	10	20
Wisconsin	4	6	10	11	3	14	24
Wyoming	0	0	0	1	2	3	3
Other U. S. Territories and Possessions							
Guam	2	0	2	2	0	2	4
Puerto Rico	30	10	40	10	3	13	53
Virgin Islands	1	1	2	0	0	0	2
Unknown*	11	2	13	0	2	2	15
<b>Total</b>	<b>6,926</b>	<b>2,908</b>	<b>9,834</b>	<b>1,731</b>	<b>689</b>	<b>2,420</b>	<b>12,254</b>

\* Unknown = U. S. students who gave no state designation.



Fig. 2.4 Enrollment by State of Residence, Fall Semester 1999





## ENROLLMENT

**Table 2.14 Students Enrolled by Georgia County of Residence, Fall Semester 1999**

County	Undergrad.	Graduate	Total	County	Undergrad.	Graduate	Total	County	Undergrad.	Graduate	Total
Appling	2	0	2	Fannin	2	1	3	Oglethorpe	0	0	0
Atkinson	1	0	1	Fayette	270	17	287	Paulding	15	4	19
Bacon	2	0	2	Floyd	66	8	74	Peach	7	2	9
Baker	1	0	1	Forsyth	65	5	70	Pickens	11	0	11
Baldwin	15	2	17	Franklin	3	0	3	Pierce	1	0	1
Banks	7	0	7	Fulton	847	270	1,117	Pike	4	0	4
Barrow	17	3	20	Gilmer	9	1	10	Polk	14	2	16
Bartow	39	8	47	Glascocock	0	0	0	Pulaski	0	0	0
Ben Hill	11	0	11	Glynn	39	5	44	Putnam	9	0	9
Berrien	2	0	2	Gordon	29	3	32	Quitman	0	2	2
Bibb	93	11	104	Grady	10	1	11	Rabun	4	1	5
Bleckley	4	0	4	Greene	6	0	6	Randolph	1	0	1
Brantley	0	0	0	Gwinnett	992	114	1,106	Richmond	122	13	135
Brooks	2	0	2	Habersham	27	0	27	Rockdale	80	8	88
Bryan	19	0	19	Hall	90	9	99	Schley	0	0	0
Bulloch	13	2	15	Hancock	0	0	0	Screven	12	0	12
Burke	10	1	11	Haralson	7	1	8	Seminole	3	0	3
Butts	5	0	5	Harris	9	1	10	Spalding	25	1	26
Calhoun	2	0	2	Hart	9	0	9	Stephens	9	1	10
Camden	12	2	14	Heard	2	0	2	Stewart	3	0	3
Candler	2	0	2	Henry	91	7	98	Sumter	13	1	14
Carroll	42	6	48	Houston	92	8	100	Talbot	1	0	1
Catoosa	37	1	38	Irwin	1	0	1	Taliaferro	0	0	0
Charlton	0	1	1	Jackson	7	1	8	Tattnell	5	0	5
Chatham	163	20	183	Jasper	5	0	5	Taylor	0	0	0
Chattahoochee	3	0	3	Jeff Davis	5	0	5	Telfair	2	0	2
Chattooga	7	1	8	Jefferson	10	0	10	Terrell	3	0	3
Cherokee	95	11	106	Jenkins	4	0	4	Thomas	36	2	38
Clarke	48	5	53	Johnson	1	0	1	Tift	14	1	15
Clay	1	0	1	Jones	7	0	7	Toombs	14	1	15
Clayton	214	15	229	Lamar	6	0	6	Towns	5	1	6
Clinch	2	0	2	Lanier	0	0	0	Treutlen	2	0	2
Cobb	1,027	148	1,175	Laurens	23	2	25	Troup	31	1	32
Coffee	5	1	6	Lee	21	0	21	Turner	3	0	3
Colquitt	12	0	12	Liberty	22	0	22	Twiggs	2	0	2
Columbia	192	7	199	Lincoln	1	0	1	Union	4	0	4
Cook	3	1	4	Long	1	0	1	Upson	19	1	20
Coweta	46	7	53	Lowndes	50	3	53	Walker	15	2	17
Crawford	2	0	2	Lumpkin	6	1	7	Walton	30	0	30
Crisp	11	2	13	Macon	5	0	5	Ware	14	0	14
Dade	3	0	3	Madison	6	0	6	Warren	1	0	1
Dawson	3	2	5	Marion	2	0	2	Washington	9	1	10
Decatur	5	5	10	McDuffie	10	0	10	Wayne	9	0	9
Dekalb	678	135	813	McIntosh	3	0	3	Webster	0	0	0
Dodge	5	0	5	Meriwether	5	1	6	Wheeler	1	0	1
Dooley	5	0	5	Miller	0	0	0	White	8	0	8
Dougherty	52	4	56	Mitchell	6	0	6	Whitfield	42	1	43
Douglas	94	3	97	Monroe	12	0	12	Wilcox	0	0	0
Early	9	1	10	Montgomery	2	1	3	Wilkes	2	0	2
Echols	0	0	0	Morgan	24	0	24	Wilkinson	3	0	3
Effingham	21	1	22	Murray	8	0	8	Worth	6	0	6
Elbert	3	0	3	Muscogee	103	9	112	Unknown*	118	59	177
Emanuel	10	1	11	Newton	29	2	31				
Evans	2	3	5	Oconee	27	2	29	<b>Total</b>	<b>6,868</b>	<b>988</b>	<b>7,856</b>

\* Unknown = In-state students who gave no county designation.

## ENROLLMENT

**Fig. 2.5 Enrollment by Georgia County of Residence, Fall Semester 1999**





## ENROLLMENT

**Table 2.15 Class Enrollment by Gender and Ethnicity, Fall Semester 1999**

Class	Asian		Black		Hispanic		Native American		White		Multiracial	
	M	F	M	F	M	F	M	F	M	F	M	F
<u>Undergraduate</u>												
JEPHS**	0	0	0	0	0	0	0	0	10	3	0	0
Freshman	316	125	136	95	51	23	0	1	1,579	582	40	17
Sophomore	269	106	103	82	55	14	2	0	1,191	468	25	17
Junior	224	99	147	75	55	20	2	2	1,080	451	23	12
Senior	270	98	185	103	65	25	7	2	1,367	521	13	14
Special Undergraduate	2	2	3	6	3	1	0	0	43	26	1	0
<b>Total Undergraduate</b>	<b>1,081</b>	<b>430</b>	<b>574</b>	<b>361</b>	<b>229</b>	<b>83</b>	<b>11</b>	<b>5</b>	<b>5,270</b>	<b>2,051</b>	<b>102</b>	<b>60</b>
<u>Graduate</u>												
Master's	338	102	58	74	80	24	3	0	911	271	9	4
Ph.D.	580	146	83	49	58	20	2	2	689	248	7	0
Special Graduate	6	3	2	1	1	0	0	0	38	9	0	0
<b>Total Graduate</b>	<b>924</b>	<b>251</b>	<b>143</b>	<b>124</b>	<b>139</b>	<b>44</b>	<b>5</b>	<b>2</b>	<b>1,638</b>	<b>528</b>	<b>16</b>	<b>4</b>
<u>Institute</u>												
<b>Total</b>	<b>2,005</b>	<b>681</b>	<b>717</b>	<b>485</b>	<b>368</b>	<b>127</b>	<b>16</b>	<b>7</b>	<b>6,908</b>	<b>2,579</b>	<b>118</b>	<b>64</b>

\*\* JEPHS=Joint Enrollment Program for High School Students

**Table 2.16 Class Enrollment by Gender and Year, Fall Terms 1997-99**

Class	1997			1998			1999		
	M	F	Total	M	F	Total	M	F	Total
<u>Undergraduate</u>									
JEPHS**	20	8	28	10	5	15	10	3	13
Freshman	1,915	684	2,599	2,148	833	2,981	2,122	843	2,965
Sophomore	1,442	620	2,062	1,619	638	2,257	1,645	687	2,332
Junior	1,416	587	2,003	1,472	641	2,113	1,531	659	2,190
Senior	2,035	735	2,770	2,026	794	2,820	1,907	763	2,670
Special Undergraduate	70	62	132	82	36	118	52	35	87
<b>Total Undergraduate</b>	<b>6,898</b>	<b>2,696</b>	<b>9,594</b>	<b>7,357</b>	<b>2,947</b>	<b>10,304</b>	<b>7,267</b>	<b>2,990</b>	<b>10,257</b>
<u>Graduate</u>									
Master's	1,281	452	1,733	1,374	477	1,851	1,399	475	1,874
Ph.D.	1,312	366	1,678	1,323	404	1,727	1,419	465	1,884
Special Graduate	56	25	81	55	22	77	47	13	60
<b>Total Graduate</b>	<b>2,649</b>	<b>843</b>	<b>3,492</b>	<b>2,752</b>	<b>903</b>	<b>3,655</b>	<b>2,865</b>	<b>953</b>	<b>3,818</b>
<u>Institute</u>									
<b>Total</b>	<b>9,547</b>	<b>3,539</b>	<b>13,086</b>	<b>10,109</b>	<b>3,850</b>	<b>13,959</b>	<b>10,132</b>	<b>3,943</b>	<b>14,075</b>

\*\* JEPHS=Joint Enrollment Program for High School Students

Note: Fall Semester Enrollment as of October 18, 1999



## ENROLLMENT

Table 2.17 Undergraduate Enrollment by College, Ethnicity, and Gender, Fall Semester 1999\*

School	Asian		Black		Hispanic		Native American		White		Multi-Racial		Total		Total
	M	F	M	F	M	F	M	F	M	F	M	F	M	F	
Architecture	17	20	4	9	5	5	1	0	127	98	1	2	155	134	289
Building Construction	1	0	5	1	2	0	0	0	52	15	0	1	60	17	77
Industrial Design	6	8	3	4	2	3	0	0	72	64	1	0	84	79	163
Undeclared Architecture	1	1	0	0	0	0	0	0	3	5	0	0	4	6	10
<b>Total Architecture</b>	<b>25</b>	<b>29</b>	<b>12</b>	<b>14</b>	<b>9</b>	<b>8</b>	<b>1</b>	<b>0</b>	<b>254</b>	<b>182</b>	<b>2</b>	<b>3</b>	<b>303</b>	<b>236</b>	<b>539</b>
Computer Science	232	69	51	30	20	2	3	0	779	83	18	5	1,103	189	1,292
<b>Total Computing</b>	<b>232</b>	<b>69</b>	<b>51</b>	<b>30</b>	<b>20</b>	<b>2</b>	<b>3</b>	<b>0</b>	<b>779</b>	<b>83</b>	<b>18</b>	<b>5</b>	<b>1,103</b>	<b>189</b>	<b>1,292</b>
Aerospace	44	9	17	7	11	1	2	0	214	55	6	2	294	74	368
Chemical	75	43	28	41	13	6	0	0	301	148	3	4	420	242	662
Civil	16	9	29	14	14	7	0	0	285	119	1	5	345	154	499
Computer Engineering	185	24	63	32	21	5	0	1	449	28	13	2	731	92	823
Electrical	197	20	120	38	25	4	2	0	489	54	11	3	844	119	963
Industrial	64	76	51	47	40	18	0	0	467	296	7	6	629	443	1,072
Materials Science and Eng.	4	2	2	0	1	0	0	0	29	11	0	0	36	13	49
Mechanical	90	15	73	35	34	6	1	2	719	139	17	5	934	202	1,136
Nuclear and Radiological Eng.	0	0	0	1	1	0	0	0	17	3	2	0	20	4	24
Polymer and Textile Chem.	0	1	1	2	0	0	0	0	15	8	0	0	16	11	27
Textiles	0	0	0	0	0	0	0	0	1	0	0	0	1	0	1
Textile Engineering	0	0	0	1	0	0	0	0	0	0	0	0	0	1	1
Textiles Enterprise Management	1	0	1	1	0	0	0	0	9	7	0	0	11	8	19
Textile and Fiber Engineering	6	1	4	4	0	1	0	0	27	22	0	1	37	29	66
Undeclared Engineering	30	11	9	10	8	1	0	1	210	76	5	3	262	102	364
<b>Total Engineering</b>	<b>712</b>	<b>211</b>	<b>398</b>	<b>233</b>	<b>168</b>	<b>49</b>	<b>5</b>	<b>4</b>	<b>3,232</b>	<b>966</b>	<b>65</b>	<b>31</b>	<b>4,580</b>	<b>1,494</b>	<b>6,074</b>
Economics	4	2	1	1	2	0	0	0	19	12	1	0	27	15	42
History, Technology, and Soc.	3	0	5	2	2	0	0	0	23	16	0	0	33	18	51
International Affairs	7	6	1	4	3	2	0	0	84	102	3	5	98	119	217
Public Policy	1	0	1	0	0	0	0	0	8	4	0	0	10	4	14
Science, Tech. & Culture	3	5	3	2	0	0	0	0	33	27	0	1	39	35	74
Undeclared Ivan Allen	1	3	8	5	0	0	0	0	17	23	0	1	26	32	58
<b>Total Ivan Allen</b>	<b>19</b>	<b>16</b>	<b>19</b>	<b>14</b>	<b>7</b>	<b>2</b>	<b>0</b>	<b>0</b>	<b>184</b>	<b>184</b>	<b>4</b>	<b>7</b>	<b>233</b>	<b>223</b>	<b>456</b>
Management	36	39	73	26	16	11	1	0	471	276	3	8	600	360	960
Management Science	1	0	0	2	0	0	0	0	3	5	0	0	4	7	11
<b>Total Management</b>	<b>37</b>	<b>39</b>	<b>73</b>	<b>28</b>	<b>16</b>	<b>11</b>	<b>1</b>	<b>0</b>	<b>474</b>	<b>281</b>	<b>3</b>	<b>8</b>	<b>604</b>	<b>367</b>	<b>971</b>
Applied Physics	0	1	0	0	0	0	0	0	1	1	0	0	1	2	3
Biology	23	28	11	20	2	6	0	0	82	154	3	3	121	211	332
Chemistry	13	13	2	5	0	1	0	1	38	61	1	0	54	81	135
Discrete Mathematics	0	0	0	0	0	1	0	0	6	4	0	0	6	5	11
Earth and Atmospheric Sci.	0	1	0	2	1	0	1	0	19	14	1	1	22	18	40
Mathematics	2	3	2	1	1	0	0	0	31	24	1	0	37	28	65
Physics	8	3	1	2	2	1	0	0	70	16	1	2	82	24	106
Psychology	3	6	0	3	0	0	0	0	16	25	1	0	20	34	54
Undeclared Sciences	5	9	2	3	0	1	0	0	32	27	1	0	40	40	80
<b>Total Sciences</b>	<b>54</b>	<b>64</b>	<b>18</b>	<b>36</b>	<b>6</b>	<b>10</b>	<b>1</b>	<b>1</b>	<b>295</b>	<b>326</b>	<b>9</b>	<b>6</b>	<b>383</b>	<b>443</b>	<b>826</b>
No College Declared	2	2	3	6	3	1	0	0	52	29	1	0	61	38	99
<b>Total No College Declared</b>	<b>2</b>	<b>2</b>	<b>3</b>	<b>6</b>	<b>3</b>	<b>1</b>	<b>0</b>	<b>0</b>	<b>52</b>	<b>29</b>	<b>1</b>	<b>0</b>	<b>61</b>	<b>38</b>	<b>99</b>
<b>Total Institute</b>	<b>1,081</b>	<b>430</b>	<b>574</b>	<b>361</b>	<b>229</b>	<b>83</b>	<b>11</b>	<b>5</b>	<b>5,270</b>	<b>2,051</b>	<b>102</b>	<b>60</b>	<b>7,267</b>	<b>2,990</b>	<b>10,257</b>

\*Note: Fall Semester Enrollment as of October 18, 1999





## ENROLLMENT

Table 2.18 Graduate Enrollment by College, Ethnicity, and Gender, Fall Semester 1999\*

School	Asian		Black		Hispanic		Native American		White		Multi-Racial		Total		Total
	M	F	M	F	M	F	M	F	M	F	M	F	M	F	
Architecture	26	9	10	6	6	4	0	0	77	35	0	0	119	54	173
City Planning	3	4	5	5	0	1	0	0	37	20	0	0	45	30	75
<b>Total Architecture</b>	<b>29</b>	<b>13</b>	<b>15</b>	<b>11</b>	<b>6</b>	<b>5</b>	<b>0</b>	<b>0</b>	<b>114</b>	<b>55</b>	<b>0</b>	<b>0</b>	<b>164</b>	<b>84</b>	<b>248</b>
Algorithms, Comb., & Opt.	2	0	0	0	0	0	0	0	0	0	0	0	2	0	2
Bioengineering	0	0	0	0	0	1	0	0	0	0	0	0	0	1	1
Computer Science	71	16	10	9	4	2	0	0	103	31	1	0	189	58	247
Human-Computer Interaction	5	0	0	2	0	0	0	0	5	4	0	0	10	6	16
<b>Total Computing</b>	<b>78</b>	<b>16</b>	<b>10</b>	<b>11</b>	<b>4</b>	<b>3</b>	<b>0</b>	<b>0</b>	<b>108</b>	<b>35</b>	<b>1</b>	<b>0</b>	<b>201</b>	<b>65</b>	<b>266</b>
Algorithms, Comb., & Opt.	0	0	0	0	0	0	0	0	2	1	0	0	2	1	3
Aerospace	88	12	1	1	13	0	0	0	95	14	0	0	197	27	224
Bioengineering	9	3	1	2	2	1	0	0	18	11	0	0	30	17	47
Chemical	20	14	4	6	1	3	1	1	45	11	0	0	71	35	106
Civil	60	13	5	5	14	4	0	0	81	20	2	0	162	42	204
Electrical and Computer Eng.	276	49	30	23	27	4	1	1	336	30	1	0	671	107	778
Electrical	1	0	0	0	0	0	0	0	1	0	0	0	2	0	2
Eng. Sci. & Mechanics	1	1	1	0	0	0	0	0	1	0	0	0	3	1	4
Environmental	22	9	1	2	4	1	1	0	31	22	0	1	59	35	94
Health Physics	1	1	0	0	0	1	0	0	13	2	1	0	15	4	19
Health Systems	3	2	0	0	0	0	0	0	4	4	0	0	7	6	13
Industrial Engineering	81	13	7	7	22	5	0	0	70	31	1	0	181	56	237
Materials Science & Eng.	26	4	4	8	1	0	0	0	26	3	2	1	59	16	75
Mechanical	80	16	22	9	11	5	2	0	258	52	5	0	378	82	460
Nuclear and Radiological Eng.	4	0	1	2	1	0	0	0	14	4	0	0	20	6	26
Operations Research	2	3	0	0	0	0	0	0	16	3	0	0	18	6	24
Polymers	2	0	0	0	0	0	0	0	2	2	0	0	4	2	6
Statistics	1	1	0	0	1	0	0	0	2	0	0	0	4	1	5
Textile Engineering	16	6	0	0	0	0	0	0	2	0	0	0	18	6	24
Textile and Fiber Chemistry	3	2	0	0	0	0	0	0	0	0	0	0	3	2	5
Textile and Fiber Engineering	7	3	1	0	0	0	0	0	2	2	0	0	10	5	15
<b>Total Engineering</b>	<b>703</b>	<b>152</b>	<b>78</b>	<b>65</b>	<b>97</b>	<b>24</b>	<b>5</b>	<b>2</b>	<b>1,019</b>	<b>212</b>	<b>12</b>	<b>2</b>	<b>1,914</b>	<b>457</b>	<b>2,371</b>
Economics	0	0	2	1	1	0	0	0	5	1	0	0	8	2	10
History of Technology	2	0	0	1	0	0	0	0	7	5	0	0	9	6	15
Human-Computer Interaction	0	1	0	0	0	0	0	0	2	3	0	0	2	4	6
Information Design & Tech.	5	6	0	4	1	2	0	0	8	9	0	1	14	22	36
International Affairs	5	4	0	0	0	1	0	0	13	21	0	1	18	27	45
Public Policy	3	2	1	4	3	2	0	0	13	13	1	0	21	21	42
<b>Total Ivan Allen</b>	<b>15</b>	<b>13</b>	<b>3</b>	<b>10</b>	<b>5</b>	<b>5</b>	<b>0</b>	<b>0</b>	<b>48</b>	<b>52</b>	<b>1</b>	<b>2</b>	<b>72</b>	<b>82</b>	<b>154</b>
Management	35	14	5	10	12	3	0	0	112	33	1	0	165	60	225
Management of Technology	3	1	9	3	1	0	0	0	59	15	0	0	72	19	91
<b>Total Management</b>	<b>38</b>	<b>15</b>	<b>14</b>	<b>13</b>	<b>13</b>	<b>3</b>	<b>0</b>	<b>0</b>	<b>171</b>	<b>48</b>	<b>1</b>	<b>0</b>	<b>237</b>	<b>79</b>	<b>316</b>
Algorithms, Comb., & Opt.	1	0	0	0	0	0	0	0	3	1	0	0	4	1	5
Biology	7	6	2	1	0	0	0	0	10	28	0	0	19	35	54
Chemistry	22	12	7	10	1	3	0	0	64	37	1	0	95	62	157
Earth and Atmos. Science	10	11	0	2	0	0	0	0	19	6	0	0	29	19	48
Human-Computer Interaction	1	0	0	0	0	0	0	0	0	0	0	0	1	0	1
Mathematics	6	4	3	1	9	1	0	0	28	8	0	0	46	14	60
Physics	11	5	10	0	2	0	0	0	38	5	0	0	61	10	71
Psychology	3	2	1	0	2	0	0	0	15	40	0	0	21	42	63
Statistics	0	2	0	0	0	0	0	0	1	1	0	0	1	3	4
<b>Total Sciences</b>	<b>61</b>	<b>42</b>	<b>23</b>	<b>14</b>	<b>14</b>	<b>4</b>	<b>0</b>	<b>0</b>	<b>178</b>	<b>126</b>	<b>1</b>	<b>0</b>	<b>277</b>	<b>186</b>	<b>463</b>
<b>Total Institute</b>	<b>924</b>	<b>251</b>	<b>143</b>	<b>124</b>	<b>139</b>	<b>44</b>	<b>5</b>	<b>2</b>	<b>1,638</b>	<b>528</b>	<b>16</b>	<b>4</b>	<b>2,865</b>	<b>953</b>	<b>3,818</b>

\*Note: Fall Semester Enrollment as of October 18, 1999

## ENROLLMENT

Table 2.19 Undergraduate Enrollment by College, Fall Terms 1990-99

School	1990	1991	1992	1993	1994	1995	1996	1997	1998	1999
Architecture	476	446	443	367	312	332	308	287	323	289
Building Construction	96	98	102	88	86	89	97	101	88	77
Industrial Design	94	99	112	116	123	134	153	164	173	163
Undeclared Architecture	1	2	1	0	0	0	0	0	0	10
<b>Total Architecture</b>	<b>667</b>	<b>645</b>	<b>658</b>	<b>571</b>	<b>521</b>	<b>555</b>	<b>558</b>	<b>552</b>	<b>584</b>	<b>539</b>
Computer Science	—	445	411	449	528	659	769	948	1,184	1,292
<b>Total Computing</b>	—	<b>445</b>	<b>411</b>	<b>449</b>	<b>528</b>	<b>659</b>	<b>769</b>	<b>948</b>	<b>1,184</b>	<b>1,292</b>
Aerospace	443	389	386	334	265	245	239	266	339	368
Ceramic and Materials	86	100	99	110	92	70	85	70	57	49
Chemical	457	560	693	740	790	825	764	691	690	662
Civil	504	594	607	631	691	700	664	595	553	499
Computer Engineering	189	227	255	311	360	442	548	604	761	823
Electrical	1,395	1,424	1,314	1,269	1,174	1,147	1,074	953	1,004	963
Engineering Science and Mechanics	60	54	53	30	14	3	—	—	—	—
Industrial and Systems	852	861	797	815	858	911	981	990	1,098	1,072
Mechanical	1,229	1,282	1,247	1,115	1,113	1,091	1,049	1,033	1,076	1,136
Nuclear and Health Physics	83	72	73	63	59	45	33	26	23	24
Polymer and Textile Chemistry	—	—	—	—	—	—	39	37	34	27
Textiles	43	52	53	44	39	34	23	28	27	1
Textile Chemistry	16	19	23	24	37	57	—	—	—	—
Textile Engineering	118	128	132	145	142	123	89	84	85	1
Textile and Fiber Engineering	—	—	—	—	—	—	—	—	—	66
Textiles Enterprise Management	—	—	—	—	—	—	—	—	—	19
Undeclared Engineering	578	505	473	530	461	437	402	440	430	364
<b>Total Engineering</b>	<b>6,056</b>	<b>6,271</b>	<b>6,206</b>	<b>6,174</b>	<b>6,107</b>	<b>6,130</b>	<b>5,990</b>	<b>5,817</b>	<b>6,177</b>	<b>6,074</b>
Economics	64	52	42	38	43	44	52	43	51	42
History, Technology, and Society	—	8	24	32	30	38	39	48	59	51
International Affairs	—	85	153	173	168	161	158	167	201	217
Literature, Communication, and Culture	—	6	11	19	—	—	—	—	—	—
Management	1,162	1,065	889	746	667	706	738	797	—	—
Management Science	49	36	41	46	46	46	35	49	—	—
Public Policy	—	—	—	—	—	—	—	—	3	14
Science, Technology and Culture	—	—	—	—	24	24	35	52	62	74
Undeclared Ivan Allen	88	77	67	50	50	78	88	91	81	58
<b>Total Ivan Allen</b>	<b>1,363</b>	<b>1,329</b>	<b>1,227</b>	<b>1,104</b>	<b>1,028</b>	<b>1,097</b>	<b>1,145</b>	<b>1,247</b>	<b>457</b>	<b>456</b>
Management	—	—	—	—	—	—	—	—	925	960
Management Science	—	—	—	—	—	—	—	—	26	11
<b>Total Management*</b>	—	—	—	—	—	—	—	—	<b>951</b>	<b>971</b>
Biology	198	239	249	274	324	369	360	352	347	332
Chemistry	97	122	137	139	152	168	146	140	130	135
Earth and Atmosphere Sciences	—	—	—	—	42	36	42	44	35	40
Mathematics	86	79	77	83	83	79	75	68	71	76
Physics	161	153	140	159	147	129	97	101	79	109
Psychology	39	30	36	39	48	52	58	67	60	54
Undeclared Sciences	176	174	178	171	232	199	229	96	96	80
<b>Total Sciences</b>	<b>757</b>	<b>797</b>	<b>817</b>	<b>865</b>	<b>1,028</b>	<b>1,032</b>	<b>1,007</b>	<b>868</b>	<b>818</b>	<b>826</b>
No College Declared	—	—	—	—	—	—	—	162	133	99
<b>Total No College Declared</b>	—	—	—	—	—	—	—	<b>162</b>	<b>133</b>	<b>99</b>
<b>Total Institute</b>	<b>9,270</b>	<b>9,487</b>	<b>9,319</b>	<b>9,163</b>	<b>9,212</b>	<b>9,473</b>	<b>9,469</b>	<b>9,594</b>	<b>10,304</b>	<b>10,257</b>

\*DuPree College of Management was included in the Ivan Allen College until 1998.

Note: Fall Semester Enrollment as of October 18, 1999





## ENROLLMENT

**Table 2.20 Graduate Enrollment by College, Fall Terms 1990-99**

School	1990	1991	1992	1993	1994	1995	1996	1997	1998	1999
Architecture	165	171	180	193	192	172	166	158	158	173
City Planning	54	74	81	98	91	86	80	69	79	75
<b>Total Architecture</b>	<b>220</b>	<b>245</b>	<b>261</b>	<b>291</b>	<b>283</b>	<b>260</b>	<b>246</b>	<b>227</b>	<b>237</b>	<b>248</b>
Algorithms, Combinatorics, & Opt.	—	—	—	—	—	—	—	2	2	2
Bioengineering	—	—	—	—	—	—	—	—	1	1
Computer Science	182	239	246	233	225	204	191	188	220	247
Human-Computer Interaction	—	—	—	—	—	—	—	6	12	16
<b>Total Computing</b>	<b>182</b>	<b>239</b>	<b>246</b>	<b>233</b>	<b>225</b>	<b>204</b>	<b>191</b>	<b>196</b>	<b>235</b>	<b>266</b>
Algorithms, Combinatorics, & Opt.	—	—	—	—	—	—	—	—	2	3
Aerospace	164	174	191	206	240	190	202	196	213	224
Bioengineering	—	—	—	—	—	—	—	11	30	47
Ceramic and Materials	30	25	21	39	43	36	22	34	54	75??
Chemical	75	83	86	96	108	117	110	109	100	106
Civil	188	178	212	217	216	246	257	245	212	204
Electrical	667	700	740	807	817	735	714	690	745	2
Electrical and Computer Engineering	—	—	—	—	—	—	—	—	—	778
Engineering Science and Mechanics	25	25	30	25	17	12	7	6	6	4
Environmental Engineering	57	80	90	88	125	137	135	136	114	94
Health Systems	—	—	—	—	10	14	6	10	10	13
Industrial and Systems	247	317	299	251	220	209	193	177	211	237
Mechanical	257	311	334	320	314	356	367	412	435	460
Metallurgical	29	36	33	38	38	40	54	34	19	—
Nuclear and Health Physics	89	97	122	117	105	83	78	62	60	45
Operations Research	—	—	—	—	18	10	12	19	17	24
Polymers	—	—	—	—	—	—	—	5	5	6
Statistics	—	—	—	—	—	—	—	1	3	5
Textiles	13	19	15	13	6	4	4	3	6	—
Textile Engineering	35	41	45	45	58	52	57	39	35	24
Textile and Fiber Chemistry	6	8	5	4	4	7	6	5	5	5
Textile and Fiber Engineering	—	—	—	—	—	—	—	—	—	15
Undeclared Engineering	—	—	—	—	12	1	4	6	—	—
<b>Total Engineering</b>	<b>1,882</b>	<b>2,094</b>	<b>2,223</b>	<b>2,266</b>	<b>2,351</b>	<b>2,249</b>	<b>2,228</b>	<b>2,200</b>	<b>2,282</b>	<b>2,371</b>
Economics	—	2	3	8	24	20	8	11	9	10
History of Technology	—	—	—	—	7	15	17	13	12	15
Human-Computer Interaction	—	—	—	—	—	—	—	1	2	6
Information, Design & Technology	—	—	—	—	33	37	39	35	42	36
International Affairs	—	—	—	—	—	—	19	33	30	45
Management	186	219	232	220	213	206	216	203	—	—
Management of Technology	—	—	—	—	—	23	51	74	—	—
Public Policy	—	20	32	32	38	44	42	44	46	42
Technology and Science Policy	59	30	17	8	5	3	1	1	—	—
Undeclared Ivan Allen	—	—	—	—	—	—	—	1	—	—
<b>Total Ivan Allen</b>	<b>245</b>	<b>271</b>	<b>284</b>	<b>268</b>	<b>320</b>	<b>349</b>	<b>393</b>	<b>416</b>	<b>141</b>	<b>154</b>
Management	—	—	—	—	—	—	—	—	206	225
Management of Technology	—	—	—	—	—	—	—	—	92	91
<b>Total Management*</b>	—	—	—	—	—	—	—	—	<b>298</b>	<b>316</b>
Algorithms, Combinatorics, & Opt.	—	—	—	—	—	—	—	3	7	5
Biology	45	42	46	46	40	40	42	47	50	54
Chemistry	107	127	115	118	121	123	117	130	139	157
Earth and Atmospheric Sciences	63	69	68	83	68	70	70	48	48	48
Human-Computer Interaction	—	—	—	—	—	—	—	—	1	1
Mathematics	64	66	90	85	83	79	67	70	67	60
Physics	99	100	113	114	108	96	85	82	82	71
Psychology	64	73	82	90	89	89	77	70	64	63
Statistics	—	—	—	—	—	—	—	2	4	4
Undeclared	—	1	1	1	0	4	0	1	—	—
<b>Total Sciences</b>	<b>442</b>	<b>478</b>	<b>515</b>	<b>537</b>	<b>509</b>	<b>501</b>	<b>458</b>	<b>453</b>	<b>462</b>	<b>463</b>
<b>Total Institute</b>	<b>2,971</b>	<b>3,327</b>	<b>3,529</b>	<b>3,595</b>	<b>3,688</b>	<b>3,563</b>	<b>3,516</b>	<b>3,492</b>	<b>3,655</b>	<b>3,818</b>

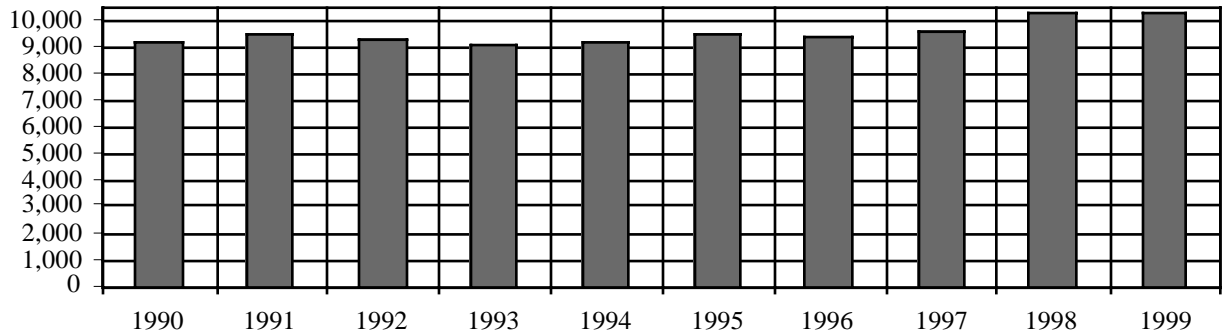
\*DuPree College of Management was included in the Ivan Allen College until 1998.

Note: Fall Semester Enrollment as of October 18, 1999

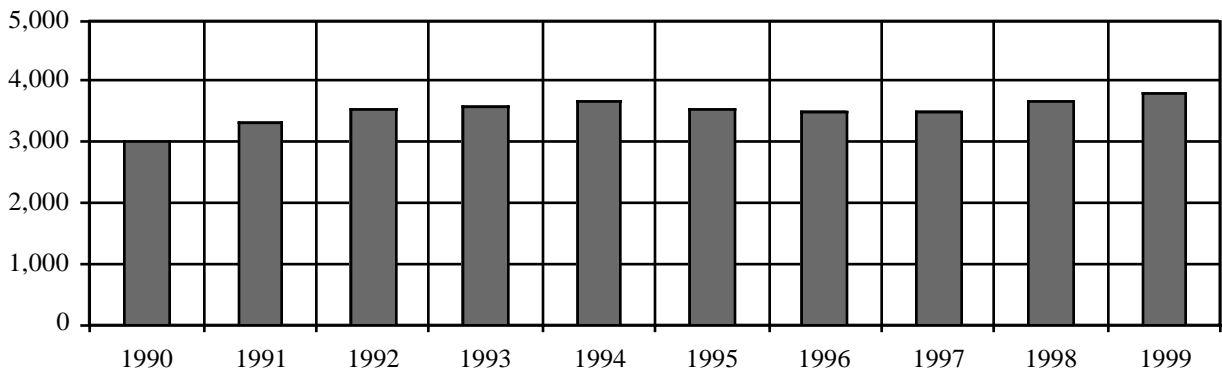


## ENROLLMENT

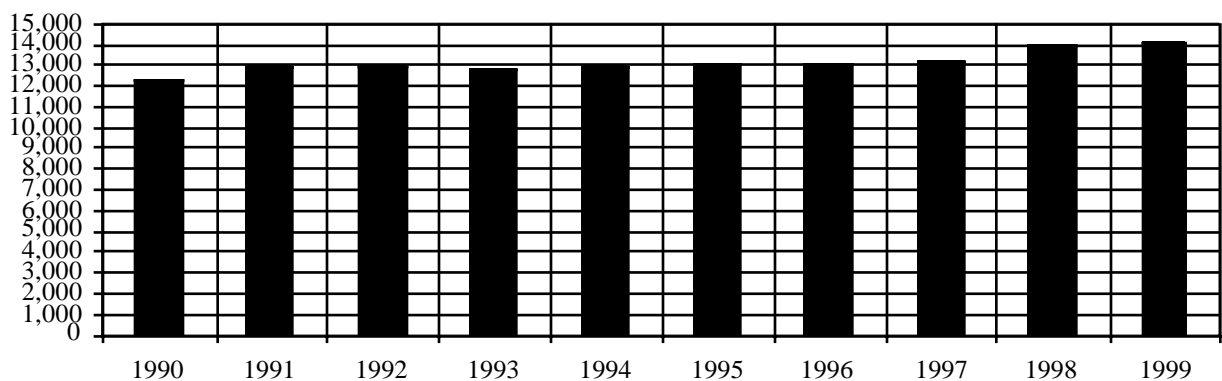
**Fig. 2.6 Undergraduate Enrollment for the Ten Year Period  
Fall Terms 1990 - 1999**



**Fig. 2.7 Graduate Enrollment for the Ten Year Period  
Fall Terms 1990 - 1999**



**Fig. 2.8 Institute Enrollment for the Ten Year Period  
Fall Terms 1990 - 1999**





## ENROLLMENT

**Table 2.21 Graduate Enrollment by Degree Program, Fall Terms 1990-1999**

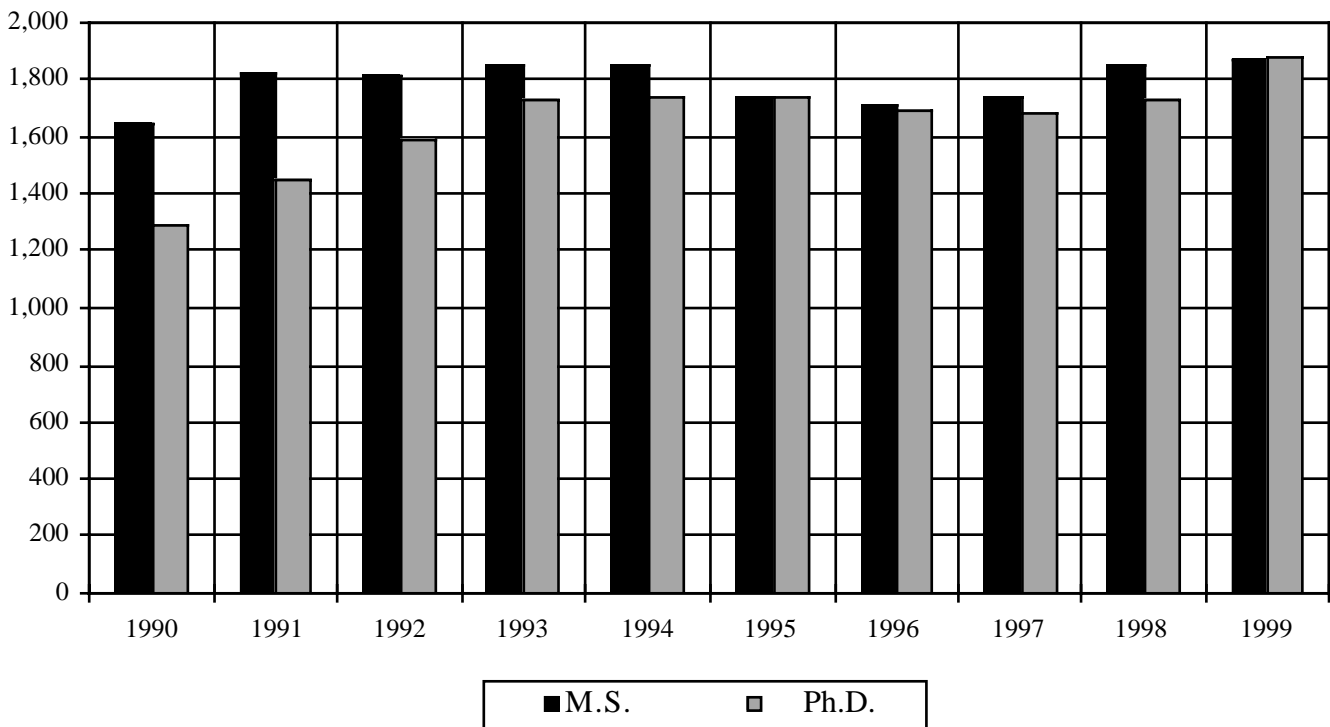
Fall	Architecture		Computing		Engineering		Ivan Allen		Management*		Sciences		Total	
	M.S.	Ph.D.	M.S.	Ph.D.	M.S.	Ph.D.	M.S.	Ph.D.	M.S.	Ph.D.	M.S.	Ph.D.	M.S.	Ph.D.
1990	191	24	73	109	1,062	797	213	25	–	–	103	326	1,642	1,281
1991	211	28	106	120	1,165	908	236	31	–	–	105	359	1,823	1,446
1992	143	33	108	126	1,217	995	248	34	–	–	105	395	1,821	1,583
1993	254	36	95	128	1,160	1,096	254	36	–	–	93	430	1,856	1,726
1994	245	37	85	134	1,165	1,115	274	33	–	–	86	413	1,855	1,732
1995	226	29	76	120	1,066	1,127	302	38	–	–	66	417	1,736	1,731
1996	207	32	69	117	1,030	1,115	342	39	–	–	62	388	1,710	1,691
1997	191	32	59	129	1,029	1,117	367	39	–	–	87	361	1,733	1,678
1998	197	34	81	147	1,114	1,133	122	18	257	28	80	367	1,851	1,727
1999	206	38	87	177	1,112	1,232	123	26	277	30	69	381	1,874	1,884

Note: Fall Semester Enrollment as of October 18, 1999.

\*DuPree College of Management was included in the Ivan Allen College until 1998.

Includes both full-time and part-time Ph.D. and M.S. students; does not include special students.

**Fig. 2.9 Graduate Enrollment by Degree Program  
Fall Terms 1990-1999**



## DISTRIBUTION OF GRADES

**Table 2.22 Student Grades by College and Percent, Fall Semester 1999**

	A	B	C	D	F	S*	U*	I*	W*	V*	Average Grade
College of Architecture											
Lower Division	54.1	29.3	8.1	1.8	1.2	1.8	0.0	0.1	3.6	0.0	3.4
Upper Division	59.1	27.4	6.5	1.5	0.9	0.0	0.0	0.5	4.2	0.0	3.5
Graduate Division	52.7	26.0	2.1	0.5	0.3	12.7	0.4	2.0	3.3	0.0	3.6
<b>College Total</b>	<b>55.7</b>	<b>27.9</b>	<b>6.2</b>	<b>1.4</b>	<b>0.9</b>	<b>3.5</b>	<b>0.1</b>	<b>0.7</b>	<b>3.7</b>	<b>0.0</b>	<b>3.5</b>
College of Computing											
Lower Division	19.1	25.8	22.3	10.8	6.7	0.0	0.0	0.7	13.8	0.8	2.5
Upper Division	37.2	24.9	17.6	6.5	4.7	2.1	0.0	1.1	5.1	1.0	2.9
Graduate Division	33.4	12.5	1.5	0.1	0.0	31.8	0.1	0.5	2.2	18.0	3.7
<b>College Total</b>	<b>26.4</b>	<b>22.9</b>	<b>17.0</b>	<b>7.6</b>	<b>4.9</b>	<b>6.8</b>	<b>0.0</b>	<b>0.8</b>	<b>9.3</b>	<b>4.2</b>	<b>2.7</b>
College of Engineering											
Lower Division	29.1	29.4	22.8	5.6	4.9	1.0	0.2	0.4	6.5	0.0	2.8
Upper Division	33.6	31.7	20.0	5.6	2.9	0.3	0.1	1.4	4.4	0.1	2.9
Graduate Division	32.8	17.1	3.3	0.4	0.3	27.8	0.5	3.7	2.6	11.6	3.5
<b>College Total</b>	<b>32.3</b>	<b>26.3</b>	<b>15.1</b>	<b>3.9</b>	<b>2.5</b>	<b>9.6</b>	<b>0.2</b>	<b>1.9</b>	<b>4.3</b>	<b>3.9</b>	<b>3.0</b>
Ivan Allen College											
Lower Division	26.6	38.3	18.0	3.7	2.4	2.1	0.1	0.7	4.6	0.3	2.9
Upper Division	41.0	32.4	10.6	2.4	2.2	3.3	0.1	0.9	6.9	0.0	3.2
Graduate Division	67.6	16.7	0.7	0.2	0.2	4.0	0.2	3.1	2.1	5.2	3.8
<b>College Total</b>	<b>32.3</b>	<b>35.7</b>	<b>15.3</b>	<b>3.2</b>	<b>2.3</b>	<b>2.5</b>	<b>0.1</b>	<b>0.9</b>	<b>5.0</b>	<b>0.5</b>	<b>3.0</b>
College of Management											
Lower Division	26.5	33.9	23.2	5.5	4.1	0.3	0.0	1.2	5.2	0.2	2.8
Upper Division	27.8	42.6	19.4	3.7	1.2	0.6	0.0	0.6	4.1	0.1	3.0
Graduate Division	58.9	27.8	3.1	0.5	0.1	2.6	0.1	0.8	2.1	4.0	3.6
<b>College Total</b>	<b>37.4</b>	<b>35.9</b>	<b>15.1</b>	<b>3.1</b>	<b>1.5</b>	<b>1.2</b>	<b>0.0</b>	<b>0.8</b>	<b>3.7</b>	<b>1.4</b>	<b>3.1</b>
College of Sciences											
Lower Division	29.7	26.8	20.8	8.5	6.1	1.0	0.1	0.8	6.0	0.0	2.7
Upper Division	28.5	26.7	20.6	7.0	4.1	2.5	0.3	1.3	8.5	0.5	2.8
Graduate Division	24.5	14.4	3.2	0.7	0.6	35.2	0.2	1.8	4.0	15.6	3.4
<b>College Total</b>	<b>29.0</b>	<b>25.5</b>	<b>18.9</b>	<b>7.5</b>	<b>5.3</b>	<b>4.9</b>	<b>0.1</b>	<b>1.0</b>	<b>6.1</b>	<b>1.7</b>	<b>2.8</b>
Institute											
Lower Division	28.5	29.7	19.9	6.7	4.8	1.2	0.1	0.7	6.3	1.5	2.8
Upper Division	34.5	31.1	17.2	4.7	2.6	1.1	0.1	1.1	5.1	2.6	3.0
Graduate Division	37.3	17.9	2.8	0.4	0.3	23.4	0.3	2.6	2.7	12.3	3.6
<b>Institute Total</b>	<b>32.0</b>	<b>27.7</b>	<b>15.7</b>	<b>4.9</b>	<b>3.2</b>	<b>5.6</b>	<b>0.1</b>	<b>1.2</b>	<b>5.2</b>	<b>4.0</b>	<b>3.0</b>

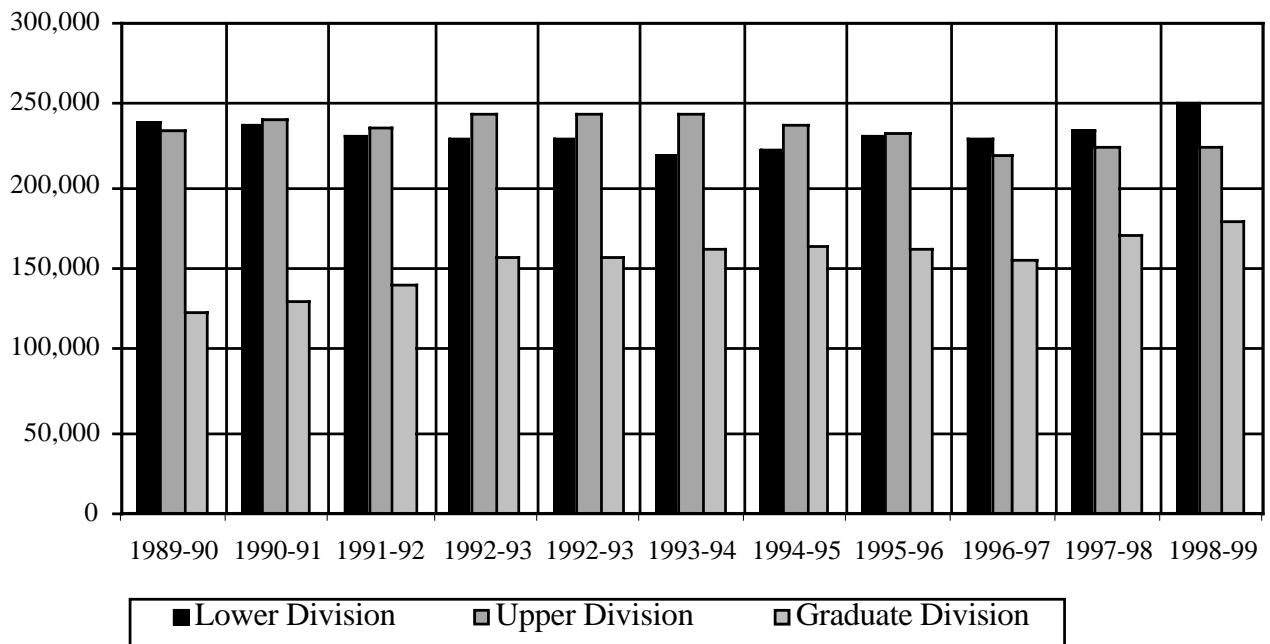




## CREDIT HOURS

**Table 2.23 Student Credit Hours by Division, Fiscal Years 1989-90 to 1998-99**

Fiscal Year	Lower Division	Upper Division	Graduate Division	Total
1989-90	239,133	234,613	123,606	597,352
1990-91	236,652	240,453	129,481	606,586
1991-92	231,543	236,051	140,855	608,480
1992-93	228,650	244,288	156,515	629,454
1992-93	228,650	244,288	156,515	629,454
1993-94	219,894	244,671	161,530	626,095
1994-95	223,310	238,010	162,580	623,901
1995-96	230,301	232,124	161,623	624,048
1996-97	229,037	219,942	155,381	604,360
1997-98	234,723	223,887	169,644	628,254
1998-99	251,215	223,372	177,341	651,928

**Fig. 2.10 Student Credit Hours  
Fiscal Years 1990 - 1999**



## UNDERGRADUATE COOPERATIVE PROGRAM

Since 1912, Georgia Tech has offered a five-year cooperative program to those students who wish to combine career-related experience with classroom studies. The program is the fourth oldest of its kind in the world and the largest totally optional co-op program in the country. Students who enroll in this program alternate between industrial assignments and classroom studies on a semester basis, completing the same course work on the campus that is completed by regular four-year students. Graduates of the program are awarded a degree in their field with the designation "Cooperative Plan." By completing work assignments abroad and exhibiting proficiency in a foreign language, students may earn the "International Cooperative Plan" designation.

Professional work experience gives cooperative students an opportunity to develop their career interests, become more confident in their career choices, and gives them an opportunity to develop human relations skills through their work experiences. They are paid for their work in industry and are able to save a portion of their salaries, which can be applied toward educational expenses. Approximately 700 companies, throughout the U.S. and internationally, participate in the program. With average starting salaries over \$11 per hour for students, the aggregate amount earned last year by all co-ops was about \$22 million.

**Table 2.24 Undergraduate Cooperative Program Enrollment by Major, Fiscal Years 1990-1999**

Major	1990	1991	1992	1993	1994	1995	1996	1997	1998	1999
Aerospace Engineering	116	111	128	123	113	121	122	148	173	195
Biology	15	24	32	35	32	58	39	35	32	36
Building Construction	0	0	0	0	0	0	0	3	4	9
Ceramic Engineering	11	4	5	7	7	8	5	1	0	0
Chemical Engineering	205	232	295	354	343	445	414	400	311	293
Chemistry	18	24	21	28	31	28	31	28	23	26
Civil Engineering	172	208	203	238	280	318	319	286	242	197
Computer Engineering	75	97	101	133	164	247	302	331	370	382
Computer Science	148	149	151	180	204	289	317	355	396	456
Earth and Atmospheric Sciences	0	0	0	2	8	6	7	10	8	3
Economics	5	5	6	6	8	6	4	3	6	7
Electrical Engineering	699	672	625	609	609	617	526	473	433	386
Engineering Science and Mechanics	16	15	10	14	4	4	1	0	0	0
Industrial Design	2	17	29	30	36	39	52	45	45	33
Industrial Engineering	321	338	320	309	323	368	439	451	459	436
International Affairs	0	0	15	22	27	30	29	34	25	33
Management	169	183	166	143	118	131	171	205	222	201
Management Science	14	9	11	13	10	11	10	17	3	2
Materials Engineering	18	32	29	27	23	20	22	25	17	13
Mathematics	13	12	10	10	11	13	10	13	12	13
Mechanical Engineering	536	610	617	511	571	637	613	641	587	590
Nuclear and Radiological Engineering	20	22	21	17	12	13	11	12	7	13
Physics	33	32	33	30	21	21	17	15	15	18
Polymer and Textile Chemistry	7	9	8	16	16	20	19	16	16	16
Science, Technology and Culture	0	0	0	0	0	4	5	9	11	7
Textiles	7	7	5	6	8	10	11	6	11	5
Textile Engineering	35	41	56	61	62	71	49	50	38	32
Undecided Engineering College	94	75	96	189	124	176	134	124	149	128
Undecided Ivan Allen College	13	10	15	8	5	13	15	4	11	4
Undecided Sciences College	0	0	0	11	17	9	11	6	12	2
<b>Total</b>	<b>2,762</b>	<b>2,938</b>	<b>3,008</b>	<b>3,132</b>	<b>3,187</b>	<b>3,733</b>	<b>3,705</b>	<b>3,746</b>	<b>3,638</b>	<b>3,536</b>

**Table 2.25 Undergraduate Cooperative Program Summary, Fiscal Years 1990-1999**

	1990	1991	1992	1993	1994	1995	1996	1997	1998	1999
Cumulative Enrollment	3,246	3,568	3,571	3,648	3,683	3,905	4,189	4,187	4,185	3,949
Student Graduates	325	360	416	468	409	355	427	349	400	420





## GRADUATE COOPERATIVE PROGRAM

The Graduate Cooperative Program was established in December 1983 and is currently the largest such program in the U.S. for science and engineering. Nine-hundred twenty (920) students (88 in 1998-99) have received their graduate degrees with Graduate Co-op Program certificates. Enrollment in the program was 401 during 1998-99, including 149 doctoral students. Summary statistics for the program are provided in the table.

**Table 2.26 Graduate Cooperative Program Enrollment by Major, Fiscal Years 1990-99**

Major	1990	1991	1992	1993	1994	1995	1996	1997	1998	1999
Aerospace Engineering	20	27	24	25	18	20	16	8	15	14
Architecture	2	4	12	13	24	21	33	35	27	41
Biology	0	1	2	3	4	4	2	2	0	2
Chemical Engineering	4	3	1	5	4	2	12	8	13	8
Chemistry	2	2	1	5	6	5	3	4	6	4
Civil Engineering	25	41	49	31	21	16	15	14	12	25
City Planning	3	4	7	19	4	17	32	34	30	33
Earth and Atmospheric Sciences	8	10	10	5	2	3	2	1	3	2
Electrical Engineering	126	126	147	155	148	145	121	124	125	110
Engineering Science and Mechanics	12	10	13	10	1	1	0	2	0	4
Environmental Engineering	0	0	0	0	11	6	3	2	4	3
Health Physics	0	0	0	0	2	2	2	0	1	1
Information and Computer Sciences	36	51	42	55	50	48	39	40	38	41
Information Design and Technology	—	—	—	—	—	—	1	0	1	3
Industrial and Systems Engineering	44	75	84	68	43	36	35	41	37	33
Mechanical Engineering	46	47	66	79	65	55	44	49	50	42
Nuclear Engineering	3	2	4	4	2	2	2	0	1	1
Materials Engineering	3	3	3	8	4	5	7	5	5	6
Mathematics	5	5	3	5	8	8	4	3	4	3
Metallurgical Engineering	0	0	0	0	2	1	1	1	0	0
Management	39	38	33	28	27	20	12	10	18	15
Physics	13	12	15	16	9	6	3	2	1	1
Public Policy	—	—	—	—	—	—	1	1	2	2
Psychology	5	12	15	19	14	8	5	3	3	3
Textiles	5	8	6	8	3	4	5	3	6	4
<b>Total</b>	<b>401</b>	<b>481</b>	<b>537</b>	<b>561</b>	<b>472</b>	<b>435</b>	<b>400</b>	<b>392</b>	<b>402</b>	<b>401</b>

**Table 2.27 Graduate Cooperative Program Summary, Fiscal Years 1990-99**

	1990	1991	1992	1993	1994	1995	1996	1997	1998	1999
Applicants	245	265	375	391	344	302	298	288	292	297
Admissions	234	249	360	380	332	288	290	281	286	290
Placements	216	253	242	317	256	216	220	215	218	216
Companies for above placements	85	141	135	148	150	126	128	130	129	125

## STUDY ABROAD PROGRAM

Most Georgia Tech students who go abroad do so as part of a study abroad or exchange program. Study abroad programs, which take place primarily during the summer, offer Georgia Tech courses that are taught primarily by Georgia Tech professors. Study abroad programs take students to places ranging from Australia and Kenya to France and Argentina. In 1997, Georgia Tech began actively managing reciprocal exchange programs that allow students to complete a portion of their academic programs in top-notch foreign universities. Exchange students enroll in the foreign university as visiting students and take classes, which are often taught in a foreign language, with the students from the host country.

**Table 2.28 Georgia Tech Students Abroad by Year, 1993-94 - 1998-99\***

Year	Number
1993 - 1994	191
1994 - 1995	241
1995 - 1996	291
1996 - 1997	333
1997 - 1998	485
1998 - 1999	506

\* Year is equal to Summer through Spring Quarters.

**Table 2.29 Georgia Tech Students Abroad by Discipline, 1998 and 1999**

Program Title	Number of Participants	
	1998	1999
Argentina Summer Program	n/a	17
Brussels Summer Program	20	17
Chemical Engineering in London	30	10
College of Architecture Senior Year in Paris	24	21
College of Architecture Summer Study in Rome	23	20
College of Computing Summer Program in Barcelona	0	29
Exchange Programs	16	27
Field Work in Animal Behavior	8	6
Georgia Tech Lorraine Summer Program for Undergraduates	31	64
Industrial Design in the French Context	15	0
Languages for Business and Technology	26	15
Modern Architecture and the Modern City	11	0
Non-Georgia Tech Programs	17	8
Oxford Summer Program	192	175
Winter Program Down Under	47	90
Work Abroad/International Co-op	8	7
<b>Total</b>	<b>485</b>	<b>506</b>





## DEGREES CONFERRED

**Table 2.30 Degrees Conferred by College, Ethnicity, and Gender, Summer Quarter 1998 - Spring Quarter 1999**

Table 2.3: Degrees Conferred by College, Ethnicity, and Gender, Summer Quarter 1999 – Spring Quarter 1999															
College	Asian		Black		Hispanic		Native American		White		Multiracial		International		Total
	M	F	M	F	M	F	M	F	M	F	M	F	M	F	
Bachelor's															
Architecture	7	5	3	5	3	0	0	0	67	27	0	1	0	1	119
Computing	21	2	7	3	2	0	0	0	102	13	0	0	7	1	158
Engineering	97	42	80	64	33	10	2	3	702	196	3	1	53	7	1,293
Ivan Allen	3	3	4	4	1	0	0	1	28	33	0	0	1	0	78
Management	7	9	12	3	4	1	0	0	93	92	1	0	0	0	222
Sciences	8	13	3	4	0	2	0	0	57	69	1	1	0	0	158
<b>Total</b>	<b>143</b>	<b>74</b>	<b>109</b>	<b>83</b>	<b>43</b>	<b>13</b>	<b>2</b>	<b>4</b>	<b>1,049</b>	<b>430</b>	<b>5</b>	<b>3</b>	<b>61</b>	<b>9</b>	<b>2,028</b>
Master's															
Architecture	1	2	5	6	2	0	0	0	36	20	0	0	2	0	74
Computing	2	5	2	1	1	0	0	0	19	4	0	0	23	3	60
Engineering	34	9	27	13	11	3	0	0	225	58	0	0	203	31	614
Ivan Allen	0	0	2	2	0	1	0	1	11	20	0	0	4	3	44
Management	3	1	4	2	2	0	0	0	64	20	0	0	21	10	127
Sciences	2	2	2	2	1	0	0	0	17	17	0	0	13	3	59
<b>Total</b>	<b>42</b>	<b>19</b>	<b>42</b>	<b>26</b>	<b>17</b>	<b>4</b>	<b>0</b>	<b>1</b>	<b>372</b>	<b>139</b>	<b>0</b>	<b>0</b>	<b>266</b>	<b>50</b>	<b>978</b>
Doctoral															
Architecture	0	0	0	0	0	0	0	0	2	0	0	0	3	1	6
Computing	0	0	0	0	0	0	0	0	4	2	0	0	3	1	10
Engineering	12	1	6	0	3	0	0	0	68	12	0	0	53	8	163
Ivan Allen	0	0	0	0	0	0	0	0	0	1	0	0	0	0	1
Management	0	0	0	0	0	0	0	0	1	0	0	0	1	0	2
Sciences	2	1	2	1	0	0	0	0	22	9	0	0	8	1	46
<b>Total</b>	<b>14</b>	<b>2</b>	<b>8</b>	<b>1</b>	<b>3</b>	<b>0</b>	<b>0</b>	<b>0</b>	<b>97</b>	<b>24</b>	<b>0</b>	<b>0</b>	<b>68</b>	<b>11</b>	<b>228</b>
Institute															
<b>Institute</b>	<b>199</b>	<b>95</b>	<b>159</b>	<b>110</b>	<b>63</b>	<b>17</b>	<b>2</b>	<b>5</b>	<b>1,518</b>	<b>593</b>	<b>5</b>	<b>3</b>	<b>395</b>	<b>70</b>	<b>3,234</b>

## DEGREES CONFERRED

**Table 2.31 Degrees Conferred by State of Residence, Summer Quarter 1998 - Spring Quarter 1999**

State	Bachelor's	Master's	Ph.D.	State	Bachelor's	Master's	Ph.D.
Alabama	34	12	7	Nevada	1	0	0
Alaska	0	1	0	New Hampshire	3	1	0
Arizona	2	2	1	New Jersey	47	10	8
Arkansas	1	2	1	New Mexico	1	2	0
California	19	16	2	New York	41	24	3
Colorado	4	3	2	North Carolina	35	19	6
Connecticut	14	4	0	North Dakota	0	0	0
Delaware	5	2	0	Ohio	29	9	4
District of Columbia	2	2	1	Oklahoma	1	1	1
Florida	126	63	10	Oregon	3	2	0
Georgia	1,312	328	52	Pennsylvania	17	18	4
Hawaii	1	0	0	Rhode Island	1	0	0
Idaho	1	0	0	South Carolina	38	21	2
Illinois	12	6	4	South Dakota	0	0	0
Indiana	3	5	1	Tennessee	38	11	4
Iowa	0	0	1	Texas	24	16	2
Kansas	0	0	0	Utah	0	0	1
Kentucky	6	7	4	Vermont	1	0	0
Louisiana	14	4	2	Virginia	40	19	5
Maine	1	3	0	Washington	2	2	1
Maryland	27	13	6	West Virginia	3	2	0
Massachusetts	18	8	5	Wisconsin	2	2	0
Michigan	3	9	2	Wyoming	0	1	0
Minnesota	3	0	3	Other U.S. Territories & Possessions			
Mississippi	5	2	0	Puerto Rico	13	4	0
Missouri	5	5	3	Virgin Islands	3	1	0
Montana	0	0	0				
Nebraska	0	0	1	<b>Total</b>	<b>1,961</b>	<b>662</b>	<b>149</b>





## DEGREES CONFERRED

**Table 2.32 Degrees Conferred by Georgia County of Residence, Summer Quarter 1998 - Spring Quarter 1999**

County	Bachelor's	Master's	Ph.D.	County	Bachelor's	Master's	Ph.D.	County	Bachelor's	Master's	Ph.D.
Appling	1	1	0	Fannin	1	0	0	Oglethorpe	0	0	0
Atkinson	0	0	0	Fayette	53	4	0	Paulding	2	1	0
Bacon	0	0	0	Floyd	15	2	0	Peach	6	1	0
Baker	0	0	0	Forsyth	16	2	0	Pickens	1	1	1
Baldwin	2	2	0	Franklin	0	0	0	Pierce	1	1	0
Banks	2	0	0	Fulton	217	82	12	Pike	2	0	0
Barrow	2	1	0	Gilmer	1	0	0	Polk	3	0	0
Bartow	5	1	0	Glascok	0	0	0	Pulaski	1	0	0
Ben Hill	1	0	0	Glynn	5	0	0	Putnam	1	0	0
Berrien	2	0	0	Gordon	2	1	0	Quitman	0	0	0
Bibb	17	4	0	Grady	1	0	0	Rabun	0	2	0
Bleckley	0	0	0	Greene	1	0	0	Randolph	0	0	0
Brantley	0	0	0	Gwinnett	184	35	6	Richmond	13	5	0
Brooks	0	0	0	Habersham	6	0	0	Rockdale	17	3	1
Bryan	2	0	1	Hall	21	3	0	Schley	0	0	0
Bulloch	3	0	0	Hancock	0	0	0	Screven	2	0	0
Burke	1	0	0	Haralson	1	0	0	Seminole	0	0	0
Butts	0	0	0	Harris	1	0	0	Spalding	10	0	0
Calhoun	0	0	0	Hart	0	2	0	Stephens	5	0	0
Camden	5	0	0	Heard	1	0	0	Stewart	0	0	0
Candler	0	0	0	Henry	14	3	1	Sumter	2	0	0
Carroll	11	1	0	Houston	23	0	0	Talbot	0	0	0
Catoosa	4	0	0	Irwin	1	0	0	Taliaferro	0	0	0
Charlton	0	0	0	Jackson	1	0	0	Tattnall	2	0	0
Chatham	23	7	2	Jasper	0	0	0	Taylor	0	0	0
Chattahoochee	0	0	0	Jeff Davis	0	1	0	Telfair	0	0	0
Chattooga	1	0	0	Jefferson	1	0	0	Terrell	1	0	0
Cherokee	20	4	1	Jenkins	0	0	0	Thomas	1	2	0
Clarke	8	3	0	Johnson	1	0	0	Tift	3	0	1
Clay	0	0	0	Jones	1	0	0	Toombs	4	1	0
Clayton	33	5	1	Lamar	2	0	0	Towns	0	0	0
Clinch	1	0	0	Lanier	1	0	0	Treutlen	0	0	0
Cobb	203	59	9	Laurens	1	1	0	Troup	6	1	0
Coffee	3	1	0	Lee	2	0	0	Turner	0	0	0
Colquitt	1	0	0	Liberty	2	0	0	Twiggs	0	0	0
Columbia	37	3	0	Lincoln	1	0	0	Union	1	0	0
Cook	2	0	0	Long	1	0	0	Upson	2	2	0
Coweta	8	2	0	Lowndes	9	2	0	Walker	2	0	0
Crawford	2	0	0	Lumpkin	0	0	0	Walton	4	2	0
Crisp	3	0	0	Macon	1	0	0	Ware	2	1	0
Dade	2	0	0	Madison	2	1	0	Warren	0	0	0
Dawson	1	0	0	Marion	0	0	0	Washington	2	0	0
Decatur	0	1	0	McDuffie	3	1	0	Wayne	1	0	0
DeKalb	124	49	9	McIntosh	2	0	0	Webster	0	0	0
Dodge	0	0	0	Meriwether	0	1	0	Wheeler	0	0	0
Dooly	1	0	0	Miller	0	0	0	White	0	0	0
Dougherty	16	1	0	Mitchell	0	0	0	Whitfield	9	1	0
Douglas	12	2	0	Monroe	1	0	0	Wilcox	0	0	0
Early	1	0	0	Montgomery	0	0	0	Wilkes	1	0	0
Echols	0	0	0	Morgan	4	0	0	Wilkinson	0	0	1
Effingham	2	1	0	Murray	2	0	0	Worth	0	0	0
Elbert	1	1	0	Muscogee	20	4	0	Unknown*	7	8	6
Emanuel	2	0	0	Newton	4	0	0				
Evans	0	0	0	Oconee	7	2	0				
								<b>Total</b>	<b>1,312</b>	<b>328</b>	<b>52</b>

\* Unknown = In-state students who gave no county designation.

## DEGREES CONFERRED

**Table 2.33 Degrees Conferred by Country of Residence, Summer Quarter 1998 - Spring Quarter 1999**

Country	Bachelor's	Master's	Ph.D.	Country	Bachelor's	Master's	Ph.D.
Argentina	1	1	0	Korea (South)	3	20	8
Bangladesh	2	0	1	Kyrgyzstan	1	0	0
Belize	0	1	0	Lebanon	0	2	0
Bermuda	0	1	0	Malaysia	1	3	0
Brazil	2	2	2	Mauritius	1	0	0
Cameroon	1	1	0	Mexico	1	7	0
Canada	0	2	0	Morocco	1	0	1
Chile	0	1	0	Netherlands	0	0	1
China	1	60	21	Nigeria	1	0	1
Colombia	3	7	1	Norway	0	0	2
Costa Rica	0	2	0	Pakistan	4	3	1
Croatia	1	1	0	Panama	3	1	0
Cyprus	0	1	0	Peru	1	1	0
Denmark	0	0	1	Philippines	1	0	1
Dominican Republic	0	1	0	Poland	0	1	1
Egypt	1	0	0	Romania	0	2	1
El Salvador	3	0	0	Saudi Arabia	0	2	2
Ethiopia	0	1	0	Singapore	0	1	0
France	3	39	3	Spain	0	1	0
Germany	0	20	0	Suriname	0	1	0
Germany, Federal Republic of	0	5	3	Sweden	1	3	0
Ghana	1	0	0	Switzerland	0	1	0
Greece	1	4	1	Taiwan	1	11	4
Guatemala	0	2	0	Thailand	0	9	0
Hungary	0	1	0	Trinidad and Tobago	3	1	0
Iceland	0	1	0	Tunisia	0	1	0
India	10	49	15	Turkey	1	5	3
Indonesia	4	9	1	USSR	0	3	1
Iran	0	1	0	United Kingdom/Great Britain	3	2	0
Israel	0	2	0	Venezuela	2	6	2
Italy	1	2	0	Yugoslavia	0	2	0
Jamaica	0	3	0	Zaire	1	0	0
Japan	2	5	0				
Jordan	0	2	0				
Kenya	0	0	1	<b>Total</b>	<b>67</b>	<b>316</b>	<b>79</b>





## DEGREES CONFERRED

**Table 2.34 Bachelor's Degrees Conferred by College, Fiscal Years 1990-99**

College	1990	1991	1992	1993	1994	1995	1996	1997	1998	1999
<b>Architecture</b>	<b>104</b>	<b>103</b>	<b>84</b>	<b>164</b>	<b>123</b>	<b>127</b>	<b>120</b>	<b>91</b>	<b>105</b>	<b>119</b>
Architecture	62	66	49	125	69	69	63	50	41	52
Building Construction	22	25	23	28	31	34	32	21	32	32
Industrial Design	20	12	12	11	23	24	25	20	32	35
<b>Computing</b>	<b>*</b>	<b>92</b>	<b>97</b>	<b>87</b>	<b>70</b>	<b>74</b>	<b>89</b>	<b>79</b>	<b>102</b>	<b>158</b>
Information and Computer Science	*	92	97	87	70	74	89	79	102	158
<b>Engineering</b>	<b>1,145</b>	<b>1,145</b>	<b>1,207</b>	<b>1,235</b>	<b>1,226</b>	<b>1,257</b>	<b>1,413</b>	<b>1,230</b>	<b>1,259</b>	<b>1,293</b>
Aerospace	94	72	64	63	52	37	35	35	32	50
Ceramic	6	7	1	1	4	3	3	1	—	—
Chemical	55	58	72	84	80	137	164	148	129	142
Civil	123	98	116	125	145	165	172	176	159	168
Computer	10	16	14	19	39	45	59	58	82	106
Electrical	343	297	302	333	304	270	305	259	239	235
Engineering Science and Mechanics	9	11	7	12	10	4	3	—	—	—
Health Systems	1	0	0	—	—	—	—	—	—	—
Industrial and Systems	218	280	254	256	215	222	289	264	279	302
Materials	3	10	12	16	25	21	19	16	25	19
Mechanical	244	259	331	282	309	309	301	238	274	241
Nuclear and Radiological	21	14	7	7	12	8	13	10	9	0
Textiles	8	7	8	12	10	8	11	4	6	7
Polymer and Textile Chemistry	2	3	5	6	5	5	8	7	5	7
Textile Engineering	8	13	14	19	16	23	31	14	20	16
<b>Ivan Allen</b>	<b>406</b>	<b>355</b>	<b>369</b>	<b>362</b>	<b>347</b>	<b>254</b>	<b>311</b>	<b>258</b>	<b>262</b>	<b>78</b>
Economics	15	13	16	7	6	7	14	13	19	15
History, Technology, and Society	0	1	1	2	11	11	12	10	12	11
International Affairs	0	0	7	37	37	42	44	46	29	38
Management	376	330	336	300	285	174	218	175	182	**
Management Science	15	11	8	13	5	10	16	9	6	**
Science, Technology, and Culture	0	0	1	3	3	10	7	5	14	14
<b>Management</b>	<b>**</b>	<b>**</b>	<b>**</b>	<b>**</b>	<b>**</b>	<b>**</b>	<b>**</b>	<b>**</b>	<b>**</b>	<b>222</b>
Management	**	**	**	**	**	**	**	**	**	212
Management Science	**	**	**	**	**	**	**	**	**	10
<b>Sciences</b>	<b>193</b>	<b>134</b>	<b>127</b>	<b>127</b>	<b>119</b>	<b>155</b>	<b>189</b>	<b>136</b>	<b>184</b>	<b>158</b>
Applied Physics	13	17	14	8	13	9	8	3	0	1
Biology	24	31	45	46	33	53	76	45	76	61
Chemistry	17	29	22	29	24	30	43	31	34	36
Earth and Atmospheric Sciences	0	0	0	0	1	2	7	14	13	6
Information and Computer Science	88	*	*	*	*	*	*	*	*	*
Mathematics	11	17	18	13	13	13	15	15	16	14
Physics	26	28	17	24	27	28	31	20	25	24
Psychology	14	12	11	7	8	20	9	8	20	16
<b>Total Bachelor's Degrees</b>	<b>1,848</b>	<b>1,829</b>	<b>1,884</b>	<b>1,975</b>	<b>1,885</b>	<b>1,867</b>	<b>2,122</b>	<b>1,794</b>	<b>1,912</b>	<b>2,028</b>

\* Effective FY 1990, Information and Computer Science in the College of Sciences and Liberal Studies (COSALS) became Computer Science in the College of Computing.

\*\*DuPree College of Management was included in the Ivan Allen College until 1998.



## DEGREES CONFERRED

Table 2.35 Master's Degrees Conferred by College, Fiscal Years 1990-99

College	1990	1991	1992	1993	1994	1995	1996	1997	1998	1999
<b>Architecture</b>	<b>64</b>	<b>68</b>	<b>51</b>	<b>72</b>	<b>81</b>	<b>95</b>	<b>108</b>	<b>83</b>	<b>86</b>	<b>74</b>
Architecture	42	46	30	47	42	51	73	44	56	46
City Planning	22	22	21	25	39	44	35	39	30	28
<b>Computing</b>	<b>*</b>	<b>57</b>	<b>53</b>	<b>69</b>	<b>65</b>	<b>64</b>	<b>50</b>	<b>46</b>	<b>31</b>	<b>60</b>
Bioengineering	—	—	—	—	—	—	—	—	1	0
Computer Science	*	57	53	69	65	64	50	46	30	55
Human - Computer Interaction	—	—	—	—	—	—	—	—	—	5
<b>Engineering</b>	<b>519</b>	<b>562</b>	<b>572</b>	<b>723</b>	<b>721</b>	<b>654</b>	<b>650</b>	<b>558</b>	<b>604</b>	<b>614</b>
Aerospace	51	57	49	57	70	57	54	38	59	38
Bioengineering	—	—	—	—	—	1	0	0	1	2
Ceramic	1	4	3	7	6	6	8	7	1	—
Chemical	4	7	8	9	13	11	18	14	13	9
Civil	61	68	53	101	90	108	109	98	97	71
Electrical	209	231	203	224	252	219	216	172	186	189
Engineering Science and Mechanics	5	5	4	5	6	3	1	4	1	1
Environmental	10	6	14	25	34	16	27	12	39	29
Health Physics	13	14	14	25	27	23	14	16	12	15
Health Systems	4	7	10	19	11	16	18	9	8	9
Industrial	41	51	78	88	66	58	64	63	51	71
Materials	—	—	—	—	1	0	2	2	0	—
Materials Science and Engineering	—	—	—	—	—	—	—	—	8	22
Mechanical	68	66	86	105	85	75	75	71	96	114
Metallurgical	3	5	3	7	8	5	4	7	0	—
Nuclear	14	8	8	4	3	11	2	4	4	1
Operations Research	23	22	23	24	25	22	9	17	13	20
Polymers	3	2	2	1	4	5	12	9	4	12
Statistics	2	2	6	6	5	9	4	2	1	2
Textiles	1	1	5	7	3	0	2	0	1	2
Textile Engineering	6	6	3	9	8	9	7	11	7	3
Textile Chemistry	—	—	—	—	4	0	4	2	2	4
<b>Ivan Allen</b>	<b>84</b>	<b>72</b>	<b>92</b>	<b>119</b>	<b>102</b>	<b>122</b>	<b>133</b>	<b>156</b>	<b>177</b>	<b>44</b>
Economics	—	1	1	6	4	6	5	5	3	0
History of Technology	—	—	—	—	1	2	0	1	1	0
Human - Computer Interaction	—	—	—	—	—	—	—	—	—	3
Information, Design, and Tech.	—	—	—	—	—	10	13	10	15	11
International Affairs	—	—	—	—	—	—	—	—	15	13
Management	84	69	81	100	91	90	102	104	98	**
Management of Technology	—	—	—	—	—	—	—	20	32	**
Public Policy	—	2	10	13	6	14	11	16	13	17
Statistics	—	—	—	—	—	—	2	0	0	0
<b>Management</b>	<b>**</b>	<b>**</b>	<b>**</b>	<b>**</b>	<b>**</b>	<b>**</b>	<b>**</b>	<b>**</b>	<b>88</b>	<b>127</b>
Management	**	**	**	**	**	**	**	**	**	84
Management of Technology	**	**	**	**	**	**	**	**	**	43
<b>Sciences</b>	<b>124</b>	<b>63</b>	<b>56</b>	<b>65</b>	<b>92</b>	<b>58</b>	<b>92</b>	<b>52</b>	<b>53</b>	<b>59</b>
Applied Physics	6	4	4	4	6	3	1	0	3	0
Biology	4	3	6	0	9	6	7	1	4	5
Chemistry	9	7	9	13	12	6	22	12	15	15
Earth and Atmospheric Sciences	12	8	9	9	17	6	9	10	6	6
Human - Computer Interaction	—	—	—	—	—	—	—	—	—	1
Information and Computer Science	40	*	*	*	*	*	*	*	*	*
Mathematics	15	13	5	12	12	14	16	8	5	12
Physics	15	10	15	18	15	13	18	7	7	7
Psychology	8	13	8	7	15	7	14	11	12	10
Social Sciences	11	—	—	—	—	—	—	—	—	—
Statistics	4	1	0	2	6	3	5	3	1	3
Technology and Science Policy	—	4	—	—	—	—	—	—	—	—
<b>Total Master's Degrees</b>	<b>791</b>	<b>822</b>	<b>824</b>	<b>1,048</b>	<b>1,061</b>	<b>993</b>	<b>1,033</b>	<b>895</b>	<b>951</b>	<b>978</b>

\* Effective FY 1990 Information and Computer Science in the College of Sciences and Liberal Studies (COSALS) became Computer Science in the College of Computing.

\*\*DuPree College of Management was included in the Ivan Allen College until 1998.



Source: Office of the Registrar



## DEGREES CONFERRED

Table 2.36 Doctoral Degrees Conferred by College, Fiscal Years 1990-99

College	1990	1991	1992	1993	1994	1995	1996	1997	1998	1999
<b>Architecture</b>	<b>2</b>	<b>2</b>	<b>1</b>	<b>7</b>	<b>6</b>	<b>4</b>	<b>5</b>	<b>4</b>	<b>1</b>	<b>6</b>
Architecture	2	2	1	7	6	4	5	4	1	6
<b>Computing</b>	<b>*</b>	<b>12</b>	<b>8</b>	<b>15</b>	<b>9</b>	<b>10</b>	<b>26</b>	<b>13</b>	<b>17</b>	<b>10</b>
Algorithms, Combinatorics, and Opt.	—	—	—	—	—	—	0	0	0	1
Computer Science	*	12	8	15	9	10	26	13	17	9
<b>Engineering</b>	<b>81</b>	<b>104</b>	<b>129</b>	<b>124</b>	<b>140</b>	<b>120</b>	<b>171</b>	<b>152</b>	<b>178</b>	<b>163</b>
Aerospace	15	15	20	15	17	12	21	16	24	18
Bioengineering	—	—	—	—	—	—	—	—	2	1
Ceramic	1	3	1	1	2	3	1	1	1	1
Chemical	8	9	8	12	8	4	18	13	15	17
Civil	2	8	3	11	12	15	6	11	19	11
Electrical	28	33	48	31	46	39	52	54	60	58
Engineering Science and Mechanics	0	1	2	3	1	0	3	1	0	1
Environmental	0	0	0	0	1	1	2	1	6	3
Industrial	9	7	16	20	12	14	24	14	11	16
Materials Science and Engineering	—	—	—	—	—	—	—	—	1	8
Metallurgical	4	4	3	3	5	3	8	8	3	—
Mechanical	11	16	23	24	29	21	25	22	28	27
Nuclear	2	7	3	3	6	4	8	7	8	0
Textile Engineering	1	1	2	1	1	4	3	4	0	2
<b>Ivan Allen</b>	<b>1</b>	<b>2</b>	<b>3</b>	<b>4</b>	<b>5</b>	<b>5</b>	<b>6</b>	<b>3</b>	<b>6</b>	<b>1</b>
History, Technology, and Society	—	—	—	—	—	—	1	0	0	1
Management	1	2	3	4	5	5	5	3	6	**
<b>Management</b>	<b>**</b>	<b>**</b>	<b>**</b>	<b>**</b>	<b>**</b>	<b>**</b>	<b>**</b>	<b>**</b>	<b>**</b>	<b>2</b>
Management	**	**	**	**	**	**	**	**	**	2
<b>Sciences</b>	<b>30</b>	<b>36</b>	<b>47</b>	<b>46</b>	<b>42</b>	<b>50</b>	<b>44</b>	<b>52</b>	<b>61</b>	<b>46</b>
Algorithms, Combinatorics, and Opt.	—	0	0	0	0	0	0	0	0	1
Biology	0	6	3	4	7	2	6	3	4	2
Chemistry	6	8	14	17	13	13	6	13	19	15
Earth and Atmosphere	—	—	—	—	1	12	3	8	8	5
Geophysical Sciences	7	6	7	5	4	—	—	—	—	—
Mathematics	4	1	7	5	6	6	8	4	12	3
Information and Computer Science	6	*	*	*	*	*	*	*	*	*
Physics	4	9	12	9	5	9	11	18	8	9
Psychology	3	6	4	6	6	8	10	6	10	11
<b>Total Doctoral Degrees</b>	<b>114</b>	<b>156</b>	<b>188</b>	<b>196</b>	<b>202</b>	<b>189</b>	<b>252</b>	<b>224</b>	<b>263</b>	<b>228</b>

\* Effective FY 1990 Information and Computer Science in the College of Sciences and Liberal Studies (COSALS) became Computer Science in the College of Computing.

\*\*DuPree College of Management was included in the Ivan Allen College through 1998.

Table 2.37 Total Degrees Granted through Spring Quarter 1999

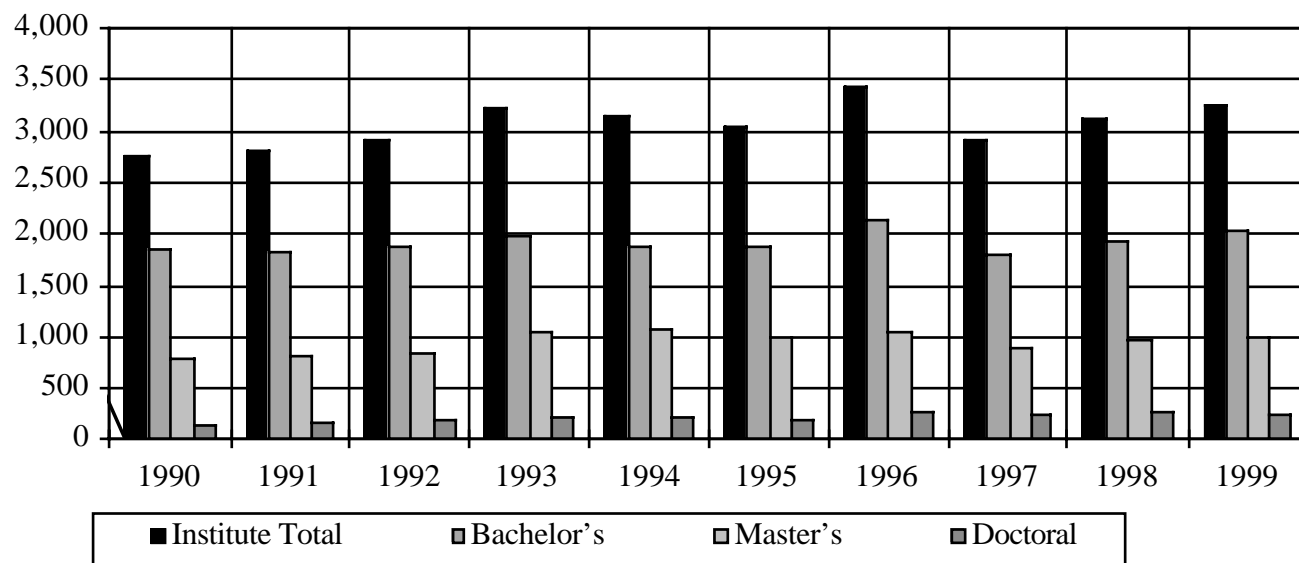
Degree	Number Granted
Bachelor's	82,138
Master's	24,848
Doctoral	3,855
<b>Overall</b>	<b>110,841</b>

## DEGREES CONFERRED

Table 2.38 Summary of Degrees Conferred, by College and Degree, Fiscal Years 1990-99

College	1990	1991	1992	1993	1994	1995	1996	1997	1998	1999
<b>Architecture</b>	<b>170</b>	<b>173</b>	<b>136</b>	<b>243</b>	<b>210</b>	<b>226</b>	<b>233</b>	<b>178</b>	<b>192</b>	<b>199</b>
Bachelor's	104	103	84	164	123	127	120	91	105	119
Master's	64	68	51	72	81	95	108	83	86	74
Doctoral	2	2	1	7	6	4	5	4	1	6
<b>Computing</b>	<b>0</b>	<b>161</b>	<b>158</b>	<b>171</b>	<b>144</b>	<b>148</b>	<b>165</b>	<b>138</b>	<b>150</b>	<b>228</b>
Bachelor's	0	92	97	87	70	74	89	79	102	158
Master's	0	57	53	69	65	64	50	46	31	60
Doctoral	0	12	8	15	9	10	26	13	17	10
<b>Engineering</b>	<b>1,744</b>	<b>1,811</b>	<b>1,915</b>	<b>2,082</b>	<b>2,087</b>	<b>2,031</b>	<b>2,234</b>	<b>1,940</b>	<b>2,041</b>	<b>2,070</b>
Bachelor's	1,144	1,145	1,207	1,235	1,226	1,257	1,413	1,230	1,259	1,293
Master's	519	562	579	723	721	654	650	558	604	614
Doctoral	81	104	129	124	140	120	171	152	178	163
<b>Ivan Allen</b>	<b>491</b>	<b>429</b>	<b>464</b>	<b>485</b>	<b>454</b>	<b>381</b>	<b>450</b>	<b>417</b>	<b>445</b>	<b>123</b>
Bachelor's	406	355	369	362	347	254	311	258	262	78
Master's	84	72	92	119	102	122	133	156	177	44
Doctoral	1	2	3	4	5	5	6	3	6	1
<b>Management</b>	<b>*</b>	<b>*</b>	<b>*</b>	<b>*</b>	<b>*</b>	<b>*</b>	<b>*</b>	<b>*</b>	<b>*</b>	<b>351</b>
Bachelor's	*	*	*	*	*	*	*	*	*	222
Master's	*	*	*	*	*	*	*	*	*	127
Doctoral	*	*	*	*	*	*	*	*	*	2
<b>Science</b>	<b>347</b>	<b>233</b>	<b>230</b>	<b>232</b>	<b>253</b>	<b>263</b>	<b>325</b>	<b>240</b>	<b>298</b>	<b>263</b>
Bachelor's	193	134	127	121	119	155	189	136	184	158
Master's	124	63	56	65	92	58	92	52	53	59
Doctoral	30	36	47	46	42	50	44	52	61	46
<b>Institute Total</b>	<b>2,752</b>	<b>2,807</b>	<b>2,903</b>	<b>3,213</b>	<b>3,148</b>	<b>3,049</b>	<b>3,407</b>	<b>2,913</b>	<b>3,126</b>	<b>3,234</b>
Bachelor's	1,847	1,829	1,884	1,975	1,885	1,867	2,122	1,794	1,912	2,028
Master's	791	822	831	1,048	1,061	993	1,033	895	951	978
Doctoral	114	156	188	196	202	189	252	224	263	228

\*DuPree College of Management was included in the Ivan Allen College through 1998.

Fig. 2.11 Total Degrees Conferred  
Fiscal Years 1990-1999

Source: Office of the Registrar



## GRADUATION RATES

**Table 2.39 Graduation Rates for Entering Freshmen**

Entering Class Summer/Fall	Graduate by 4th Year	Graduate by 5th Year	Graduate by 6th Year	Graduate by 7th Year
1990	19%	52%	66%	69%
1991	19%	56%	68%	70%
1992	20%	56%	69%	72%
1993	20%	56%	68%	
1994	18%	57%		
1995	21%			

\*\* Note: The six year graduation rate is the official rate according to the IPEDS Graduation Rate Survey definition. Starting with 1993, cohorts include students beginning Summer or Fall who are full-time for Fall. Graduation rates published in the 1998 Fact Book were calculated using a different formula.

## RETENTION RATES

**Table 2.40 Retention Rates for Entering Freshmen**

Entering Class Summer/Fall	Still Enrolled After 1 Year	Still Enrolled After 2 Years	Still Enrolled After 3 Years	Still Enrolled After 4 Years	Still Enrolled After 5 Years	Still Enrolled After 6 Years
1990	86%	76%	71%	70%	70%	69%
1991	86%	78%	73%	72%	71%	71%
1992	87%	78%	72%	72%	72%	71%
1993	85%	77%	74%	72%	72%	71%
1994	85%	79%	72%	73%	72%	
1995	85%	76%	74%	71%		
1996	85%	76%	73%			
1997	86%	79%				
1998	86%					

\*\* Note: Starting with 1993, cohorts include students beginning Summer or Fall who are full-time for Fall.

## CAREER SERVICES

The Office of Career Services is located in the Bill Moore Student Success Center. The office serves the Georgia Tech community with a variety of services, including career counseling and planning, opportunities for full-time, summer intern and part-time employment. One of the primary objectives of the office is to assist students in determining their career objectives and in attaining career and employment goals. The center conducts workshops and seminars on a variety of career related subjects—interviewing skills, resume preparation, networking, etc. A library that includes information on specific employers, governmental services, and employment-related publications is maintained at the Career Services Office. The library also contains local and national salary data, career planning, and graduate and professional school information. In addition, the office refers resumes for employer review.

Assistance is available to employers in the planning, implementation, and administration of programs that encourage effective corporate-campus relations at Georgia Tech.

Over 1,245 employer visits occurred on-campus with the Career Services Office during the 1998-1999 academic year. These employers represent a substantial number of the Fortune 500 corporations, as well as many state and regional organizations. Last year over 16,000 interviews were conducted by over 2,000 recruiters from these employers.

**Table 2.41 Top Interviewing Companies, Fiscal Years 1997-99**

1996-97	1997-98	1998-99
Andersen Consulting	Andersen Consulting	Andersen Consulting
General Electric Company	Ford Motor Company	Ernst & Young
IBM	IBM	Ford Motor Company
Intel	Intel	General Electric Company
Lucent Technologies	Lucent Technologies	IBM
Milliken and Company	Manhattan Associates	Lucent Technologies
Motorola, Inc.	Milliken and Company	Manhattan Associates
Procter & Gamble	Motorola, Inc.	Milliken and Company
Schlumberger	Procter & Gamble	Nortel Networks
Texas Instruments	Raytheon	Procter & Gamble

**Table 2.42 Average Reported Starting Annual Salaries by College and Degree, Fiscal Year 1998-99**

College	Overall	Bachelor's	Master's	Doctoral
Architecture	\$37,761	\$36,632	\$39,289	\$36,000
Computing	\$49,626	\$48,515	\$56,940	\$57,500
Engineering	\$47,580	\$44,381	\$51,920	\$64,500
Ivan Allen	\$36,857	\$30,500	\$42,000	\$36,000
Management	\$37,323	\$36,451	\$45,333	\$49,500
Sciences	\$43,787	\$34,205	\$41,148	\$57,083





## CAREER SERVICES

**Table 2.43 Reported Starting Annual Salary Comparisons by Major and Degree, Fiscal Years 1998 and 1999**

Major	Degree	1998	1999	Percent Change
Aerospace Engineering	Bachelor's	\$39,000	\$42,800	+9.8%
	Master's	\$45,700	\$43,500	-4.8%
	Doctoral	\$54,200	\$59,600	+10.0%
Architecture	Bachelor's	\$26,600	\$31,500	+18.4%
	Master's	\$36,100	\$37,000	+2.5%
	Doctoral	N/A	\$36,000	N/A
Biology	Bachelor's	\$30,300	\$30,300	0.0%
	Doctoral	\$60,000	\$30,000	-50.0%
Building Construction	Bachelor's	\$34,000	\$39,900	+17.4%
Chemical Engineering	Bachelor's	\$46,700	\$46,800	+0.2%
	Doctoral	\$63,400	\$68,300	+7.7%
Chemistry	Bachelor's	\$37,800	\$32,300	-14.6%
	Master's	\$40,000	\$39,300	-1.8%
	Doctoral	\$47,200	\$65,300	+38.3%
City Planning	Master's	\$36,800	\$41,400	+12.5%
Civil Engineering	Bachelor's	\$36,300	\$37,900	+4.4%
	Master's	\$43,200	\$41,800	-3.2%
	Doctoral	\$48,000	\$49,500	+3.1%
Computer Engineering	Bachelor's	\$45,100	\$47,800	+6.0%
Computer Science	Bachelor's	\$45,100	\$48,500	+7.5%
	Master's	\$50,000	\$56,900	+13.8%
	Doctoral	\$69,300	\$57,500	-17.0%
Economics	Bachelor's	\$37,800	\$38,300	+1.3%
Electrical Engineering	Bachelor's	\$43,500	\$45,500	+4.6%
	Master's	\$53,800	\$54,500	+1.3%
	Doctoral	\$64,900	\$70,800	+9.1%
Environmental Engineering	Master's	\$42,300	\$40,300	+4.7%
Health Physics	Master's	\$54,000	\$55,500	+2.8%
History, Technology, and Society	Bachelor's	\$27,500	\$33,500	+21.8%
Industrial Design	Bachelor's	\$31,000	\$42,300	+36.5%
	Master's	\$50,000	\$50,000	0.0%
Industrial and Systems Engineering	Bachelor's	\$41,800	\$45,900	+9.8%
	Master's	\$51,900	\$51,200	-1.3%
	Doctoral	\$55,400	\$59,400	+7.2%
International Affairs	Bachelor's	\$31,000	\$30,500	-1.6%
	Master's	\$40,000	\$42,000	+5.0%

## CAREER SERVICES

**Table 2.43** Reported Starting Annual Salary Comparisons by Major and Degree, Fiscal Year 1998 and 1999 – *Continued*

Major	Degree	1998	1999	Percent Change
Management	Bachelor's	\$34,500	\$36,800	+6.7%
	Master's	\$62,600	\$70,000	+11.8%
	Doctoral	\$64,100	\$63,000	-1.7%
Materials Science and Engineering	Bachelor's	\$41,400	\$38,800	-6.3%
	Master's	\$53,500	\$55,500	+3.7%
Mathematics	Bachelor's	\$33,300	\$39,200	+17.7%
	Master's	N/A	\$47,000	N/A
Mechanical Engineering	Bachelor's	\$42,100	\$43,900	+4.3%
	Master's	\$48,500	\$54,600	+12.8%
	Doctoral	\$59,700	\$58,400	-2.2%
Nuclear Engineering	Bachelor's	\$43,500	\$47,700	+9.7%
Physics	Bachelor's	\$45,600	\$38,100	-16.4%
	Doctoral	\$56,500	\$73,700	+30.4%
Polymers	Master's	N/A	\$43,000	N/A
Psychology	Bachelor's	\$32,200	\$25,000	-22.4%
	Master's	N/A	\$54,000	N/A
	Doctoral	\$55,200	\$43,300	-21.6%
Public Policy	Bachelor's	N/A	\$44,500	N/A
	Master's	\$50,000	\$38,000	-24.0%
Science Technology and Culture	Bachelor's	\$45,000	\$31,000	-31.1%
Textile Engineering	Bachelor's	\$39,400	\$45,000	+14.2%

