

The Yellow Jacket football squad runs through a few formations on the Rose Bowl practice field. The opening game of the season will be against SMU on Grant Field, Saturday, September 22.

## Jackets Meet S. M. U. To Open '51 Season

By George Ragovis

At two o'clock Saturday, September 22, the Yellow Jackets of Georgia Tech will play their first football game of the season, when the SMU Mustangs arrive in Atlanta. Nobody knows what the Engineers have in the way of a Southeastern Conference football contender, and the showing they make in this game will determine their position.

Tech will again rely upon its "T" formation and will lean heavily on its razzle-dazzle plays. The strongest asset the Techsters have are the hard and fast running backs, while their main weakness is the lack of weight in the defensive team. However, the main worry is the lack of experience. More than half of the varsity squad is either freshmen or sophomores. Twenty-nine of the fifty-six players have never participated in a varsity game.

Practice for the game begins September 1, and Coach Bobby Dodd said he hoped to hold the first scrimmage on Wednesday, September 8. Two-a-day drills will

run for at least ten days, and possibly for two weeks.

Winners of four SEC games in six starts last Fall, the Jackets finished with an over-all mark of 5-6. Losses from the squad included Bob Bossons, All-SEC center who is now freshman coach; Bobby North, hard running full-back; halfbacks Bob McCoy, Buster Humphreys, Jim Patton and Joe Cobb; quarterback Bubba Sykes; ends Dick Harvin, George Gilbreath and John Weigle; tackles Fred Smith and Marion Akins; guards Butch Bethea, Larry Ladner, Derwood Flanagan and Charlie Brown; and center Gene Frizzell. However, graduates of the unde-

(Continued on page 6)

## Georgia Tech "Y" Sponsors Freshman Orientation Camp

By Eddie Logan

Last year's success at the Tech Freshman Camp makes the 1951 session, September 14 through September 16, a treat no freshman should miss. Salem Camp Grounds, near Conyers, has again been selected as the camp site.

The purpose of this camp is to assist a group of in-coming Freshman to make the transition from high school to Tech through an excellent orientation away from the Tech campus; to enable Freshmen to meet upper-classmen, faculty members, and their fellow Freshmen before the rush of Freshman Week and Registration; to provide an opportunity to consider the meaning and purpose of college and to become acquainted with the spirit and traditions of Georgia Tech.

Representatives from the faculty and leaders of the student body have been carefully selected to help

the freshmen become better acquainted with campus organizations and activities. The list of speakers is headed by Col. Blake R. Van Leer, President of Georgia Tech, who will speak on, "Spiritual Values at Tech," Sunday morning at eleven o'clock; Dean Lloyd W. Chapin, Dean of Faculties, will speak Friday afternoon on "The Meaning of College"; Coach Julian H. Pittard, head baseball coach and coach of the B football team, will show a film of last year's SMU game; student speakers will include Roland Holt, President of

(Continued on page 6)

# Instructions Outlined For Fall Registration

## Familiar Outline Procedure To Be Used September 24

By Clarence Wall

Registration for Fall Quarter will follow the same general pattern as all previous registrations with but one major change; that being only one day of registration instead of the usual two.

Freshman registration and orientation week will be September 17-22. All necessary information about registration for first quarter freshmen has been sent to them by mail. Any entering freshman not receiving this information should report to Deans Griffin and Pershing in the Auditorium of the Textile building on September 17 to receive his instructions.

All transfer students and former Tech students re-entering should follow this procedure:

1. Register for a post office box in the Post Office building.
2. Report to the Registrar on September 20 for a statement of previous record for transfer credits as the case may be.
3. Go to your department for a schedule conference.
4. Get a physical exam.
5. On September 24 report to the Gymnasium according to your time card and complete your registration as directed.

All graduate students should report to the Graduate Division for a Clearance Card then proceed with registration as directed.

Men enrolled during the Summer Quarter and those from Spring Quarter who are pre-registered should report on September 24 at the Gymnasium with grade report, course list and time card. ID cards, course cards, fee cards and directory cards are being handled in the Naval Armory.

Co-Ops follow the same procedure as all other students according to classification (freshman, transfer, etc.).

It should be noted here that your registration is not considered complete until your fees have been paid. All non-veterans, AA and Navy scholarship men will settle fees at the office of the Controller in Knowles building. At this time the fee cards will be deposited. It is most important to have your Identification Card stamped before leaving this office.

A study list becomes officially "issued" when the fee cards are accepted, therefore any changes should be made before getting the fee cards. Information for dropping and swapping courses will be issued at the desk on the first floor of the Ad. Building. Late registration information will also be at the desk in the Ad. Building, with September 29 being the last day for registering.

All entering students and applicants for advanced ROTC must report for physicals in the Modern Language building on September 19 and 20 beginning each day at 8:00 a. m.

Complete printed instructions will be placed in the post office boxes prior to Monday, September 24.

## Five New Students Arrive Under WSF Scholarships

By George Ragovis

Sponsored by the Georgia Tech World Student Foundation five new students will attend Tech in the fall quarter. These student will have their expenses partially paid by various Rotary clubs as well as other civic organizations and will obtain their meals at different fraternities.

Besides these new students there are two more foreign boys who are attending Tech under the same arrangement. The seven recipients of the scholarships represent a good cross section of the world. There is one student from France, one from Germany, two from Israel, one from Lebanon, one from Norway and one from Switzerland. All of those boys are better than average students with a good knowledge of English.

Wolfgang Maier will come from Stuttgart Tech, our adopted school in Germany. Wolfgang is a graduate student in Aeronautical Engi-

neering. He is twenty-six years old, likes music and various sports. He is going to receive his meals at the Kappa Alpha fraternity house, and is sponsored by the Rotary Education Foundation of Atlanta.

The second student to attend Tech this fall is Walter Leeman, from Zurich, Switzerland. He is a Mechanical Engineer and will study internal combustion engines as well as gas turbines. He attended Swiss Federal Institute of Technology in Zurich. He is going to eat at the Alpha Epsilon Pi fraternity, and is sponsored by the

(Continued on page 6)



# the technique

"The South's Liveliest College Newspaper"

Member Associated Collegiate Press

Telephone ATwood 9160

Box J—Georgia Tech

Published semi-weekly except weekly from June 15 to September 15 by the students of the Georgia Institute of Technology, 225 North Ave., N. W., as an expression of student news and opinion only. Letters to the Editor and signed articles represent the views of their writers and not necessary those of the editor.

Entered at the post office in Atlanta as mail matter of the second class. Accepted for mailing at special rate of postage provided for in Section 1106, Act of October 2, 1917, authorized April 8, 1922.

Subscription rates \$1.00 per quarter

## HUMOR COLUMN

... is mistaken by a few readers as factual news reporting.

August 27, 1951

Editor,  
THE TECHNIQUE,  
Campus.

Dear Sir:

In the issue of The Technique for Friday, August 24, there was an article on page 3 by Mr. Clarence Wall, with the following heading—"Air Conditioning of Ad Building Planned for Late January."

I presume that by this was meant the Administration Building and that the article was intended to be humorous. If, however, it was intended to be serious reporting, it suffers from the worst possible defect. As I understand it, the first job of a reporter is to be accurate. As vice president, I am responsible for advance planning for the institution. So far as I am aware no one has ever considered air conditioning the Administration Building. The air conditioning in the President's office was installed during his brief absence on active duty

with the Army in the early part of July, I think, to his satisfaction.

If you will tell your reporters that when they plan to cover in print the future plans of the School in regard to construction, it would be well to have them drop by my office and see me. I think from your connection with the Technique you at least will know that I have always been happy to try to give your publication such information as was available and I want to assure you that I will continue to pursue this policy, as heretofore I think the Technique has in general been quite accurate in covering matters of this nature and have been quite generous in the space devoted to it.

I think you should call to Mr. Wall's attention that the first duty of a reporter is to get his facts straight.

Sincerely yours,

C. L. Emerson, Vice President

\* \* \* \*

EDITOR'S NOTE: The article of which Mr.

## A Reminder

... which should help prevent further thievery.

We would like to take this opportunity to repeat some advice that has been given earlier this quarter. The advice or information as it may more accurately be called, pertains to the thefts that have already occurred in the dormitories, and means which may prevent further thievery from happening.

At the end of each quarter, it is common knowledge to all that the students here at school are getting enough money together to make their pilgrimages home. In direct ratio to this fact, the number of thefts increases greatly.

The best way to prevent thefts from happening is to remove any advantage a thief may have. This can best be done by placing as many obstacles in

his path as is possible, and the hardest obstacle to overcome is a locked door. If the men in the dormitories will remember to keep their doors locked at all times, even while sleeping in the room, a major step will be taken in the elimination of thefts.

The housing office does all it can to recover articles and cash which is taken, but as anyone who wants to, can enter the dormitories and the unlocked rooms there, in the job of recovery is almost impossible. With the population of the city of Atlanta and the neighboring community as possible suspects, little can be done.

At the risk of seeming repetitious, which we will be in this case, a locked door is the best preventative for theft.

—RSW

Emerson speaks was indeed intended to be humorous. We regret that it was mistaken to have been otherwise.

Actually, this article was written at the request of several of our readers. For some time, we have been receiving letters mentioning that The Technique needed some type of humorous column to "liven it up." The summer quarter has always been the trial period for such suggestions. We, therefore, asked the writer mentioned to write a purely satirical article on something concern-

ing the Georgia Tech campus. It is evident, however, that the information he gathered on the subject about which he chose to write was in error.

From the other comments received concerning the article, we do feel that it did serve its purpose as a humorous column. We will, however, endeavor to see that future articles of this nature will not be mistaken for factual news reporting.

—WMED.

### UNDER NEW MANAGEMENT THE HUDDLE

ACROSS NORTH AVENUE FROM AD. BLDG.

IS SPECIALIZING

IN HOMECOOKING and PASTRIES

OPEN 6:30 A. M. UNTIL 8:00 P. M.

MRS. TAYLOR, Proprietress

### The "Q" Room

The South's Largest  
Snooker Room

A CLEAN WHOLESOME PLACE  
FOR TECHSTERS TO PLAY

49½ North Avenue, N.W.  
(Corner Spring Street)

### COX MUSIC SHOP

Latest with the HITS on  
Decca, RCA-Victor,  
Columbia and Capitol

VOICE AND PIANO  
RECORDING

SHEET MUSIC

161 Peachtree Street  
Main 2378

### W.G.S.T.

The Georgia Tech  
Station

920 on your dial

Atlanta's ABC  
Outlet

### We Honor

Student Purchase Cards

### SPRING CLEANERS

619 Spring Street, N. W.

Phone VERNON 7169

ONE DAY SERVICE

In By 9 A.M.—Out By 5 P.M.

For Something Different  
TRY

- REAL ITALIAN RAVIOLI
- ITALIAN SPAGHETTI
- STEAKS • CHOPS
- CUBAN SANDWICHES

Newly Remodeled

ROXY'S

Peachtree and 10th

### COLLEGE SHOE REPAIRING

The nearest shoe repair shop  
for Tech Students. We do all  
types of shoe repairing.

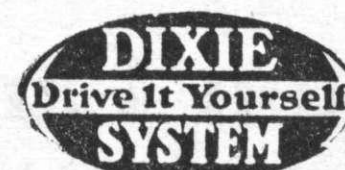
Across from the Varsity at  
629 Spring Street

LOAN CORRESPONDENTS

C. D. LeBey & Co.

METROPOLITAN LIFE INSURANCE CO.

ATLANTA, GA.



### RENT A CAR

NEW

Fords — Plymouths — Chevrolets

For All Occasions

REASONABLE RATES

Dixie Drive It Yourself System

26 Ellis Street, N. E.

WAlnut 1870

### CURB SERVICE

The best food service available at Ga. Tech and the University of Georgia

## THE VARSITY

All Glasses Mechanically Washed and Sterilized

Our Small Variety Insures Freshness



# Koseme Lists Fall Quarter Instructors

## AERONAUTICAL ENGINEERING

215	MWF	9	Bricker
322	MWF	11	Harper
323	TThS	10	Harper
324	MWF	10	Fleddermann
325	TThS	10	Fleddermann
421	MWF	11	Fleddermann
425	Th	1	Harper
425L	Th	2-5	Harper
431	TThS	9	Williams
433	MWF	9	Williams
436	W	1	Williams
436L	W	2-5	Williams
439	TThS	10	Williams
440	MWF	1-4	Harper
442	TTh	1-4	Bricker
S		9-12	
450	MWF	8	Harper
467	F	4	Dutton
470	MWF	10	Dutton
621	To be Scheduled		
630	To be Scheduled		
676	To be Scheduled		
700	To be Scheduled		
701	M	1	
727	To be Scheduled		
746	To be Scheduled		

## ARCHITECTURE

102L	MF	1-4	Heery
	TTh	8-11	Heery
103L	MF	1-4	Heery
	TTh	8-11	Heery
201	T	10	Bush-Brown
	Th	10	Bush-Brown
204	T	8	Gailey
204L	T	1-5	Beckum
	W	1-5	Beckum
206	Th	8	Gailey
206L	Th	1-5	Beckum
207	M	9	Ramey &
207L	MWF	8-12	Greene
207	M	2	Ramey &
207L	MWF	1-5	Greene
208	M	9	Edwards
208L	MWF	8-12	Edwards
209	M	2	Pretz
209L	MTF	1-5	Pretz
212	Th	1-4	Rabun
301	M	2	Shipley
301L	MTF	1-5	Shipley
302	M	2	Rabun
302L	MTF	1-5	Rabun
303	M	2	Godfrey
303L	MTF	1-5	Godfrey
310L	W	12-3	Rabun
	W	3-6	Rabun
	Th	12-3	Harris
	Th	3-6	Harris
311L	W	12-3	Rabun
	W	3-6	Rabun
	Th	12-3	Harris
	Th	3-6	Harris
312L	W	12-3	Harris
	W	3-6	Harris
	Th	12-3	Harris
	Th	3-6	Harris
322	TTh	9	Tindal
323	MF	10	Gailey
324	MF	9	Gailey
326	MWF	9	McLean
327	MWF	11	Randall
344	MWF	10	Shipley
337	TTh	9	Cooledge
401	T	2	Wilson
401L	MTWF	1-5	Wilson
402	T	2	Saporta
402L	MTWF	1-5	Saporta
403	T	2	Edwards
403L	MTWF	1-5	Edwards
408	T	2	Edwards
408L	MTWF	1-5	Edwards
409	T	2	Randall
409L	MTWF	1-5	Randall
410L	TThS	9-11	Wilson
412L	TTh	9-11	Gailey
416	TTh	12	Godfrey
422	TTh	10	Tindal
422L	S	9-12	Tindal
425	MWF	10	McLean
426	MWF	10	Randall
437	MWF	11	Bush-Brown
438	MWF	9	Pretz
441	WF	8	H. G. Edwards
501	T	4	Finch

501L	MTWThF	1-5	Finch
502	T	4	Finch &
502L	MTWThF	1-5	Heffernan
503	T	4	Heffernan
503L	MTWThF	1-6	Heffernan
508	T	4	Boguslavsky
508L	MTWThF	1-5	& Randall
509	T	4	Boguslavsky
509L	MTWThF	1-6	Boguslavsky
510	T	8-11	Heffernan
511	T	8-11	Harris
512	T	8-11	Harris
513	Th	9-11	High Museum
514	T Night		High Museum
	Th	9-11	High Museum
522	MWF	10	Pollard
522L	M	1-4	Pollard
537	MWF	12	Saporta
540	W	11	Heffernan
542	S	9-11	Hurst

## CERAMIC ENGINEERING

201	MW	9	Mitchell
201L	M	12-3	Hansard
208	TTh	9	Mitchell
208	MW	10	Hansard
209	T	12-3	Hansard
209	W	12-3	Hansard
209	F	12-3	Hansard
311	MWF	10	Wysong
311L	M	12-3	Wysong
412	By Ar.		Mitchell
413	TTh	10	Hansard
413L	Th	3-6	Hansard
416	MWF	9	Wysong
431	F	11	Wysong
431L	F	12-3	Wysong

## CHEMICAL ENGINEERING

301	MWF	11	Grubb
301	TThS	8	Grubb
314	MWF	11	Dalla Valle
315	MWF	10	Dalla Valle
325	MWF	8	Miller
	TThS	8	Miller
	TThS	10	Miller
327	MWF	9	Raudebaugh
328	MWF	11	Miller
339	Th	12	Weber
407	MWF	8	Weber
409	MWF	10	Weber
413	MWF	10	Grubb
	TThS	9	Grubb
419	MWF	9	Newton
	TThS	9	Newton
420	MWF	9	Lewis
421	MWF	9	Mason
426	TThS	9	Raudebaugh
425	MWF	11	Raudebaugh
432	MW	12-3	Newton
607	TThS	8	Sugarman
619	MWF	10	Newton
701	M	4	Ziegler
713	TThS	9	Lewis
719	MWF	8	Ziegler

## CIVIL ENGINEERING

201	TTh	9	Schnabel
	TTh	10	Dalrymple
201L	WF	12-3	Schnabel
201L	T	12-3	Th 1-4 Dalrymple
202	TTh	8	Lucas
202L	WF	12-3	Lucas
204	T	12	Schaffer
204	S	8	Schaffer
204	W	11	Dalrymple
204L	T	1-4	Schaffer
204L	S	9-12	Schaffer
204L	W	3-6	Dalrymple
301	M	11	
301L	A	T3 Th1-4	
	B	M3-6 F12-3	
303	MW	9	Lucas
303L	M	12-3	Th 1-4 Lucas
303L	TF	3-6	Lucas
305	TThS	8	Chalfant
306	TThS	10	Chalfant
306L	W	12-3	Chalfant
307	MWF	10	Paquette
321	MWF	10	Kindsvater
321L	Th	1-4	Kindsvater
321L	W	12-3	Kindsvater
322-23	TThS	9	Carstens
322L	T	12-3	Carstens
324	MWF	11	Carstens
324L	T	12-3	Schnabel

324L	W	3-6	Schnabel
406	MW	11	Boguslavsky
406	TTh	10	Liebsch
406L	Th	1-4	Boguslavsky
406L	S	9-12	Liebsch
402	TTh	10	Smith
402L	TF	12-3	Smith
407	WF	9	Chalfant
407L	T	12-3	Chalfant
405	TTh	9	Pollard
405L	M	3-6	Pollard
411	MWF	8	Sowers
411L	T	3-6	Sowers
411L	F	12-3	Sowers
415	MWF	10	Stiemke
415L	W	12-3	Stiemke
418	MWF	11	King
420	WF	3-6	King
424	TWThS	9	Paquette
424L	T	3-6	Th 1-4 Paquette
428	Arranged		Smith
434	M	4	Stiemke
434	W	4	Stiemke
444	Arranged		Stiemke
445	Arranged		Stiemke
446	Arranged		Stiemke
609	Arranged		Sowers
609L	Arranged		Sowers
621	Arranged		Liebsch
621L	Arranged		Liebsch
625	Arranged		Carstens
625L	Arranged		Carstens
633	Arranged		Kindsvater
636	Arranged		Paquette
636L	Arranged		Paquette
639	Arranged		King
639L	Arranged		King
700	Arranged		Stiemke
701	Arranged		Stiemke
704	Arranged		Stiemke
705	Arranged		Stiemke
706	Arranged		Stiemke
711	Arranged		Liebsch
711L	Arranged		Liebsch

Notes: CE 4001, new course, replaces CE 401, CE 4004, new course, replaces CE 404, CE 4171, new course, replaces CE 417, CE 4251, new course, replaces CE 425.

## DRAWING

101	TTh	8-11	Clement, Edgerly, Ellis, Harris, Whitfield
	WF	8-11	Armstrong, Clement, Edgerly, Larson, Savage
	MF	1-4	Savage
	W1-4, S9-12		Clement, Edgerly, Ellis, Harris, Larson, Savage
102	MF	1-4	Armstrong, Edgerly, Ratterree
	TTh	1-4	Durden, Ratterree
	W1-2, S9-12		Armstrong, Whitfield
103	MF	1-4	Ellis, Harris, Larson, Whitfield
	TTh	1-4	Armstrong, Savage, Whitfield
106	TTh	1-4	Clement
201	T	12-3	Larson
	Th	3-6	Harris, Larson
	F	1-4	Clement, Durden
202	T	12-3	Edgerly
	T	3-6	Harris
203	T	12-3	Ellis
	Th	3-6	Ellis

## ECONOMICS

201	MWF	8	Etheridge
	MWF	12	Thompson
	TThS	8	Etheridge
	TThS	10	Thompson
202	MWF	11	Etheridge, Arant

	MWF	1	Flinn
	TThS	9	Flinn
203	MWF	9	Thompson
	TThS	8	Thompson
325	MWF	9	Aldredge
	MWF	11	Dennison
	TThS	9	Aldredge
326	MWF	8	Proctor
	TThS	10	Proctor
327	MWF	12	Aldredge
	TThS	8	Aldredge
329	MWF	12	Proctor

## ELECTRICAL ENGINEERING

203	MW	8	White
	TTh	8	White
203C	T	12-3	White
301	MWF	9	Stalnaker
	TThS	8	Stalnaker
301C	M	12-3	Lecraw
302	TThS	9	White
302C	W	12-3	White
303	TThS	8	Weston
303C	Th	1-4	Weston
310	MWF	9	Duling
	TThS	8	Duling
310C	F	12-3	Duling
310L	T	12-3	Hagedorn
	W	12-3	Hagedorn
315	MWF	9	McKinley
316	MWF	10	White
	MWF	11	Gunson
	TThS	10	Worsham
317	MW	10	Hagedorn
	MW	11	Hagedorn
	TTh	10	Hagedorn
317L	F	12-3	Hagedorn
	F	3-6	Hagedorn
318	TThS	8	McKinley
318C	T	12-3	McKinley
320	MWF	11	Duling
320L	W	3-6	Perkins
321	MWFS	10	Ragsdale
321L	W	3-6	Hagedorn
322	MWF	9	Nottingham
322L	T	1-4	Nottingham
324	TThS	9	Worsham
	MWF	10	Worsham
324L	M	12-3	Worsham
	T	12-3	Worsham
342	MWF	9	Seidell
	TThS	10	Seidell
342L	W	1-4	Seidell
	F	1-4	Seidell
401	MWF	8	Stalnaker
	MWF	9	Savant
	TThS	9	Weston
401C	M	12-3	Stalnaker
401L	T	12-3	Stalnaker
	W	12-3	Stalnaker
	Th	12-3	Perkins
402	MWF	9	Weston
402C	T	12-3	Weston
402L	M	12-3	Weston
403	MWF	9	Perkins
403C	W	12-3	Perkins
403L	F	12-3	Perkins
422	MWF	10	Nottingham
	TThS	9	Nottingham
422L	Th	12-3	Nottingham
	Th	3-6	Nottingham
428	MWF	8	Ragsdale
	TThS	9	Ragsdale
428L	W	12-3	Ragsdale
	W	3-6	Ragsdale
429	MWF	8	Clary
429L	F	12-3	Clary
430	TThS	10	Dasher
430L	M	12-3	Dasher
432	TThS	9	Gunson
	TThS	10	Gunson
432L	F	12-3	Gunson
	F	3-6	Gunson
433	MWF	9	Fielder
	MWF	10	Fielder
436	TThS	9	Teasdale
436L	T	12-3	Teasdale
442	TThS	10	Perkins
442C	M	12-3	Perkins
445	MWF	10	McKinley
	TThS	10	McKinley
448	MWF	10	Jones
448C	T	12-3	Jones
605	TThS	9	Fielder
605C	W	1-4	Fielder



# .... Fall Quarter Instructor Lists

## GEOLOGY

(Continued from page 3)

311	MWF 10	Navarre
311	TThS 9	Navarre
414	TTh 2	Navarre
414L	Th 3-6	Navarre
421	By Ar.	Straley
421L	By Ar.	Navarre
424	By Ar.	Navarre
601	By Ar.	Straley
602	By Ar.	Straley
603	By Ar.	Straley

## INDUSTRIAL ENGINEERING

304	MWF 8	Brennan
	TThS 9	Cox
306	MWF 9	Spillar
	MWF 10	Spillar
311	MWF 9	Groseclose
402	MWF 11	Brooks
407	T 12-5	Brooks
410	T 1-5	Eastman
	F 1-5	Eastman
411	W 12	Brennan
412	W 12	Brennan
416	TTh 8	Pickett
416L	F 12	Pickett
416	TTh 9	Tolbert
416L	M 3	Tolbert
416	TTh 10	Tolbert
416L	W 3	Tolbert
417	MWF 9	Lehrer
417	TTh 12	Lehrer
417	MWF 10	Scott
417L	TTh 3	Scott
417	TThS 8	Spillar
417L	MW 12	Spillar
420	TThS 8	Eastman
422	MWF 11	Brennan
424	TTh 10	Day
424	T 12	Day
425	MWF 8	Eastman
	MWF 9	Eastman
	TThS 10	Wilcox
439	TThS 9	Moder
441	MWF 11	Brennan
451	Arrange	Staff
452	Arrange	Staff
453	Arrange	Staff
490	MWF 10	Wilcox
	MWF 11	Wilcox
601	Arrange	Wilcox
603	Arrange	Lehrer
611	Arrange	Groseclose
617	Arrange	Lehrer
618	Arrange	Spillar
619	Arrange	Moder
621	Arrange	Brennan
700	Arrange	Staff
701	Arrange	Groseclose
704	Arrange	Staff
705	Arrange	Staff
706	Arrange	Staff

## INDUSTRIAL MANAGEMENT

235	MWF 9	Etheridge
235L	T 1	
235	TThS 10	Etheridge
235L	T 1	
236	MWF 11	Bollinger
236L	Th 1	
236	TThS 10	Bollinger
236L	Th 1	
237	MWF 8	James
237L	W 1	Bollinger
237	TThS 9	Bollinger
237L	W 1	
307	MWF 11	Aldredge
310	MWF 10	Brooks
	MWF 1	Brooks
	TThS 10	Brooks
311	MWF 11	Brooks
	TThS 8	Brooks
	TThS 9	Arant
312	MWF 9	Flinn
	MWF 12	Flinn
313	MWF 8	Buckingham
	MWF 10	Buckingham
	TThS 8	Wenn
	TThS 10	Buckingham
314	MWF 9	Bollinger
	TThS 8	Bollinger
315	MWF 12	Buckingham
	TThS 9	Buckingham

316	MWF 12	Wenn
317	MWF 10	Arant
332	MWF 9	Sifford
336	MWF 1	James
	TThS 9	James
337	MWF 9 W 1	Warren
	MWF 11 W 2	James
341	MWF 9	Chisholm
	MWF 11	Warren
	TThS 9	Chisholm
	TThS 10	Chisholm
342	MWF 10	Sweeney
	TThS 8	Sweeney
343	MWF 8	Warren
	TThS 9	Warren
349	MWF 8	Flinn
407	MWF 8	Gilman
	MWF 12	Sweeney
	TThS 9	Gilman
408	MWF 9	Sweeney
	TThS 10	Sweeney
411	MWF 8	Brown
	MWF 11	Brown
	TThS 8	Brown
412	MWF 10	Brown
	TThS 9	Brown
413	MWF 8	Chisholm
	TThS 8	Chisholm
431	MWF 8	Sifford
435	MWF 10	Sifford
439	TThS 10	To be selected
439L	Th 1-4	
443	MWF 9	Wenn
	MWF 11	Wenn
445	MWF 10	Wenn
447	MWF 8	Moeller
	MWF 1	Moeller
	TThS 9	Moeller
448	MWF 10	Moeller
	TThS 10	Moeller
449	MWF 10	Thompson
453	MWF 10	Gilman
	TThS 10	Gilman
454	MWF 11	Marshall
	TThS 9	Marshall
455	MWF 8	Brewster
	TThS 8	Brewster
456	MWF 9	James
471	MW 12	Marshall
484	Th 1	Sweeney
607	TThS 9	Brewster
625	MWF 8	Arant
631	TThS 8	Warren
633	TThS 10	Marshall
637	MWF 9 W 1	Proctor
661	MWF 11	Gilman
667	MWF 10	Marshall

## MATHEMATICS

3	10	Beale, Vail
	1	Fulton, Swenson
	2	Purvis
101	8	Willoughby
	10	Fulmer, Fulton, Reynolds, Willoughby
	1	Brooks, Hook, York
	2	Beale, Daniel, Durham, York
102	8	Martin, Vail, Wahab
	9	Wahab
103	8	Brooks, Daniel, Holton, Swenson
	9	Durham, Neisius, Purvis, York, Willoughby
201	8	Beale, Garrett
	9	Sledd
	10	Durham, Perlin
	11	MWF, TTh 1 Garrett, Vail
	12	Bailey, Wahab
	1	Purvis
202	8	Currie
	9	Daniel, Hook
	10	Bailey, Martin
	11	MWF, TTh 1 Neisius
	12	Fulton
203	8	Smith
	9	Reynolds
	10	Smith, Swenson
	11	MWF, TTh 1 Holton
	12	Starrett
210	9	Martin
	11	Reynolds
305	9T	Neisius
	10	Brooks, Currie

11	Hook
306	9 Bailey
	10T Neisius

## MECHANICAL ENGINEERING

201		Weeden
202		Weeden
203		Foster
204	W 12-3	Morris
	W 3-6	Harrelson
	F 12-3	Foster
205	M 12-3	Harrelson
	T 3-6	Morris
	W 12-3	Harrelson
	Th 3-6	Harrelson
267		Morris
301		Weeden
307		Harrelson
320	M 9	Thomas & White
	M 10	Thomas & Zimmerman
322	M 10	Picha
	T 8	Holland
323	M 10	Weeden
	T 9	Allen
324		Holland
329	T 8	White
	T 9	Thomas
	T 10	White
330	T 9	White
	W 10	Holland
	W 11	Hinton
331		Hinton
332	M 8	White
	M 9	Picha
	T 9	Holland
333		Mason
350	M 3-6	White
	W 12-3	Holland
351		Allen
352		Zimmerman
353		Picha
354		Thomas
367	M 9	Zimmerman
	M 11	Trotter
367L		Trotter
401		Weeden
401L		Morris
430		Mason
434		Allen & Hinton
435	M 11	Goglia
	T 8	Hinton
436		Allen
450		Mason
451		Allen
452		Holland
467	M 8	Zimmerman
	M 9	Weber
467L	T 3-6	Picha
	Th 12-3	Trotter
468		Weber
468L		Zimmerman
469		Trotter
478		Vidosic
491-2-3		Hinton

## MECHANICS

301	TTh 8	Brown, Durden
	TTh 9	Bragg, Durden
	TTh 10	Armstrong, Bragg, Brown
	WF 10	Whitfield, Brown
	WF 11	Brown, Ellis
302	TTh 9	Hill
	TTh 10	Hill
	WF 8	Mandelker
	WF 9	Mandelker
	WF 11	Mandelker
	WF 12	Mandelker
303	MWF 10	Durden
	TThS 12	Bragg
304	T 12-3	Brown
	W 12-3	Durden
	W 3-6	Bragg
331	MWF 8	Bogle, Hill
	MWF 9	Bragg
	MWF 10	Bogle, Jacobs
	MWF 11	Bragg
	TThS 8	Jacobs
	TThS 9	Ratterree
	TThS 10	Jacobs
	TThS 12	Johns
332	TTh 8	Bogle
	TTh 9	Mandelker

	TTh 10	Bogle
	TTh 12	Mandelker
	WF 8	Brown
	WF 11	Hill
	WF 12	Jacobs
333	MWF 11	Bogle
	TThS 10	Johns
336	MWF 8	Jacobs
	TThS 8	Mandelker
423	MWF 9,T12	Hill, Ratterree

## PHYSICS

207	MTWThF 8	Ewalt
	MWF 8, TTh 9	Ewalt
	MWF 8, TTh 10	Ewalt
	MTWThF 9	McCarthy
	MWF 9, TTh 10	McCarthy
	MWF 9, TTh 3	McCarthy
	MTWThF 10	Pyron
	MWF 10, TTh 8	Pyron
	MWF 10, TTh 9	Pyron
	MWF 11, TTh 8	
	To be assigned	
	MWF 11, TTh 3	
	To be assigned	
	MWF 11, TTh 4	
	To be assigned	
208	MTWThF 9	Bortell
	MWF 9, TTh 12	Bortell
	MWF 9, TTh 2	Bortell
	MTWThF 10	Bortell
	MWF 11, TTh 8	Wike
	MWF 11, TTh 10	Wike
	MWF 11, TTh 3	Wike
209	TWThFS 8	Prosser
	WF 9, TThS 8	Prosser
	WF 10, TThS 8	Prosser
	TWThFS 9	Tope
	WF 10, TThS 9	Tope
	WF 11, TThS 9	Tope
211	MWF 8, M 1	Herreman
	MWF 8, T 1	Herreman
	MWF 9, T 2	Herreman
	MWF 9, T 4	Herreman
307	MWF 11	Wily
310	MTWThF 10	Howey
318	TThS 10	Braden
422	MTWThF 9	Crawford
497	MWF 9	Rhodes
624	MTWThF 10	Wily

## PSYCHOLOGY

301	MWF 9	Janus
	MWF 10	Janus
302	TThS 8	Glickman
	TThS 9	Glickman
401	MWF 10	Moore
	MWF 11	Moore
	TThS 8	Loveland
	TThS 9	Janus
	TThS 10	Loveland
403	TThS 10	Glickman
405	TThS 9	Loveland
601	MWF 8	Moore

## ARMY ROTC

Drill (All)	Th 11	
102	MWF 11	
101	TTh 3 S 10	
101	M 4 WF 3	
101	TTh 10 W 1	
101	MWF 11	
103	MWF 11	
211	MWF 10	Maj. Mallory
211	MWF 12	Maj. Mallory
211	TThS 9	Maj. Mallory
221	MWF 10	Capt. Connor
221	MWF 12	Capt. Connor
221	TThS 9	Capt. Connor
231	TThS 9	Maj. Ch'berlain
231	MWF 10	Maj. Fauber
241	TThS 9	Capt. Johnson
241	MWF 10	Capt. Johnson
241	MWF 12	Capt. Johnson
251	TThS 9	Lt. Col. Visco
251	MWF 12	Lt. Col. Visco
252	MWF 10	Capt. Collier
263	TThS 9	Lt. Col. Adams
263	MWF 10	Lt. Col. Adams
263	MWF 12	Lt. Col. Adams
311	MWF 8 S 11	Lt. Col. Roberts
321	MWF 8 S 11	Lt. Col. Du'rner
331	MWF 8 S 11	Maj. Fauber
341	MWF 8 S 11	Capt. Johnson
351	MWF 8 S 11	Capt. Collier

363	MWF 8 S 11	Maj. Baldwin
411	TThS 8 M 3	Maj. Roberts
421	TThS 8 M 3	Lt. Col. Duerner
431	TThS 8 M 3	Maj. Ch'berlain
441	TThS 8 M 3	Capt. McConnell
451	TThS 8 M 3	Lt. Col. Visco
463	TThS 8 M 3	Maj. Baldwin

## NAVY ROTC

111	TTh 3 S 10	Lt Cobb
	TTh 3 S 10	Lt Taylor
	M 4 WF 3	Lt Cobb
	M 4 WF 3	Lt Taylor
	MWF 11	Lt Taylor
	MWF 11	Capt Martin
211	MWF 8	Lcdr Purcell
	MWF 10	Lcdr Purcell
	TThS 9	Lcdr Purcell
	TThS 10	Lcdr Purcell
311	MWF 8 S 11	Lcdr Bolon
	MWF 8 S 11	Lt Boelens
	(Labs to be scheduled after registration)	
411	M 3 TThS 8	Lcdr Johnson
	M 3 TThS 8	CDR. Plage
	(Labs to be scheduled after registration)	
	DRILL Th 11	

## SAFETY ENGINEERING

401	MWF 9	Trowbridge
401	TThS 9	Trowbridge
401	TThS 10	Trowbridge
402	MWF 11	Trowbridge
612	Arrange	Cox
615	Arrange	Cox
616	Arrange	Cox
701	Arrange	Cox
704	Arrange	Cox
705	Arrange	Cox
706	Arrange	Cox

## TEXTILE ENGINEERING

201	MWF 9	Dickert
204	TThS 9	Hearn
204L	F 12-3	Hearn
207	MWF 11	Hearn
207L	M 3-6	Philpott
208	TThS 8	Hill
208L	W 12-3	Hill
211	MWF 11	Fletcher
211L	T 12-3	Brandon
220	MWF 10	Fletcher
	TThS 10	Fletcher
306	MWF 10	Hearn
306L	T 12-3	Philpott
307	TThS 10	Hearn
307L	M 12-3	Philpott
308	TThS 9	Hill
308L	Th 12-3	Philpott



## Technique Surveyor

During the past two weeks, representatives of the faculty and student body have met several times for the purpose of rewriting the sections of the Student Council Constitution pertaining to the Student Trial Board. In order to make certain that the student body was being represented to its best interests, The Technique ran the following Surveyor covering some of the topics under discussion in the meetings. The results shown were used as a guide for rewriting the portions of the Constitution to which they pertain. An approved version of the Constitution will be presented to the students through The Technique early next quarter.

Of the students answering the Surveyor:

Sr. 28.6% Jr. 35.7% Soph. 35.7% Fresh. 0%  
Non-veterans 64.3% Veterans 35.7%

	Yes	No
1. Do you think that there is a need for a Student Trial Board?	100 %	
2. Should a student brought before the Trial Board have the right to another student or faculty members as counsel?	100 %	
3. Should the attendance at a meeting of the Trial Board be limited only to students and faculty members?	57.2%	42.8%
4. Should the Trial Board decide anything other than the guilt or innocence of the accused person?	85.6%	14.4%
5. If yes, should a degree of guilt be determined?	91.6%	8.4%
6. Do you think the Trial Board should have the power to recommend penalties to the Executive Dean?	92.8%	7.2%
7. Should a list of maximum penalties for each offence be made up by the Executive Dean and followed?	42.8%	50.0%

The results of question seven seem to indicate that the students do not want the proposed list of maximum penalties established. However, a vast majority of those answering "no" or leaving blank this question stated on the Surveyor that they felt the list should be drawn up by the Executive Dean assisted by representatives of the student body and faculty. If such a list is drawn up, doubtlessly this procedure will be followed.

Patronize Our Advertisers

### S.M.U.—

(Continued from page 1)  
feated 1950 freshman squad and twenty-four holdover letter winners from the nucleus of what stands well to be an improved team.

George Morris, the big Vicksburg, Miss., center will be the mainstay of the Engineer squad. He is rated by many as one of the finest centers in the nation, and is the best all-around player on the team. Other returned players include Hal Miller, Ken (Lum) Snyder, Captain Lamar Wheat and Bill Thaden at tackle; Ray Beck and Matt Lyons are guards; Pete Ferris, Sid Williams and Buck Martin at end, and Alex Hunt and Pete Brown at center. In the backfield, Darrell Crawford returns at quarter along with Robby Robinson and Joe Salome; Chapel Rhino, Bobby Moorehead, Dick Uretz, Jackie Rudolph, Powell Sheffer, Peden Templeton and Harry Wright are back at half-back, and George Maloof and Art Ross are on hand at full.

As usual Tech has picked a tough opponent for its first game. Last year was the first time that the two schools met in a football

### Koseme—

#### TEXTILE ENGINEERING (Continued from page 4)

623	MW	9	Taylor
623L	T	3-6	Taylor
640	Th	3	McCarty
640L	T	12-3	and Th 12-3
653	W	3	Hill
653L	W	12-3	Hill
663	M	3	Fletcher
663L	M	12-3	Fletcher
670	F	3	Jones
670L	F	12-3	Jones
700			(Arrange)
701			(Arrange)

contest, with the Mustangs emerging victorious by a score of 33-13. This year the visitors are favored to win by 7-12 points.

### Techwood Theatre

Sun.-Mon.-Tues., Sept. 2-3-4

PASSAGE WEST  
and  
COUNTY FAIR

Wed.-Thurs., Sept. 5-6

PREHISTORIC WOMEN  
and  
STORM OVER WYOMING

Fri.-Sat., Sept. 7-8

THE FULLER BRUSH GIRL  
and  
STREETS OF GHOSTTOWN



The Canteen  
The Citadel  
Charleston, South Carolina

### For The Well Dressed Man Custom Tailoring TECH TAILORS

51 North Avenue (Next to Varsity)  
Dry Cleaning—1 Day Service  
ALTERATIONS  
REWEAVING—LAUNDRY

## THE NEW YELLOW JACKET INN

Is Serving the

Finest in Hot Dogs, Hamburgers and a Complete  
Line of Sandwiches—Also All Popular Beverages

AMPLE NORTH AVE. & PLUM STREET QUICK  
PARKING (Across from Coca-Cola Company) COURTEOUS  
SPACE "ONLY ONE BLOCK FROM TECH" SERVICE

We have greatly appreciated your business in the past years and we are looking forward to your continued patronage.

## THE BULLDOG

Coca-Cola  
REG. U.S. PAT. OFF.  
"Coke"  
REG. U.S. PAT. OFF.

5¢

Ask for it either way... both  
trade-marks mean the same thing.

BOTTLED UNDER AUTHORITY OF THE COCA-COLA COMPANY BY  
THE ATLANTA COCA-COLA BOTTLING CO.

"Coke" is a registered trade-mark.

© 1951, THE COCA-COLA COMPANY

In Charleston, South Carolina, there is always a friendly gathering of Citadel students at The Canteen. And, as in campus haunts everywhere, ice-cold Coca-Cola helps make these get-togethers something to remember. As a refreshing pause from the study grind, or when the gang gathers around—Coke belongs.

## BUY THAT SOUVENIR NOW

To Take Home at the End of the Quarter

T-SHIRTS  
TECH HATS

WINDBREAKERS  
MASCOTS  
COLLEGE SEAL JEWELRY  
Gifts for the Whole Family

PENNANTS  
STICKERS

## GA. TECH COLLEGE INN

OWNED AND OPERATED BY GEORGIA INSTITUTE OF TECHNOLOGY



**CO-OPS**

Have The Technique mailed to you during your work quarter. Special Co-op rate 75c.

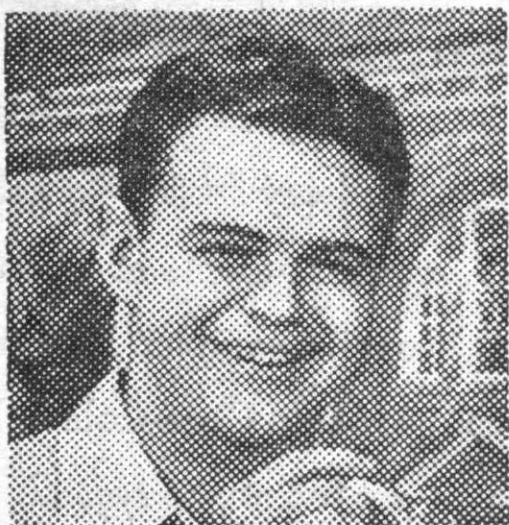
See B. D. SMITH, 33 GLEN or C. D. SMITH, 320 SMITH

# THE BIGGEST "PLUS" IN CIGARETTE HISTORY

# "NO UNPLEASANT AFTER-TASTE"

...added to the world's most famous ABCs

**A**lways milder  
**B**etter tasting  
**C**ooler smoking



"CHESTERFIELD IS THE ONLY CIGARETTE of all brands tested in which members of our taste panel found no unpleasant after-taste."

*From the report of a well-known research organization*

**ALWAYS BUY**  
**CHESTERFIELD**

Copyright 1951, LIGGETT & MYERS TOBACCO CO.

**"Y" Camp—**

(Continued from page 1)

this year's senior class, who will speak on "The Student Council"; Elliott Dunwoody, President of the Student Council, will speak on "General Activities"; Randy Sackman, Vice-President of the Student Council for the coming school year, will speak on "Student Government and Honor Societies"; Don Ramsbottom, member of the Phi Psi national honorary society will speak on "Freshman Traditions and Obligations"; Jerry Cox, Chairman of the Freshman Camp and Vice-President of the YMCA Cabinet, will speak on "Religious Activities."

A full program has been scheduled for the week-end including athletics, movies, religious services and group discussions with campus leaders and counsellors.

**W.S.F.—**

(Continued from page 1)  
Zionists of Georgia.

The third boy is Elie Yusaf Al-Baghdady, from Zahleh Lebanon. He is a senior in Physics at the American University of Beirut, where he has consistently been the highest ranking student. Yusaf, or Joseph, likes many sports and is a good athlete. He is twenty-one, speaks French and Arabic and has various hobbies. He is sponsored by the All Saints Episcopal Church of Atlanta.

Torbjorn Arnold Snekenes is the fourth student who will come to Tech. His home is in Oslo, Norway, where he went to school and studied Mechanical Engineering. He is twenty-four years old, likes to ski, skate and swim. He is going to study refrigeration, which is a very wide field in Norway due to the tremendous fish industry of that country. He will eat at the Sigma Chi house, and is sponsored by the Summerville Trion Rotary Club.

Francois Didier Martzloff is the fifth student, his home is in Sceaux, France. He is twenty-two years old and is a graduate student in Electrical Engineering. He is a radio "ham," and likes music and sports. He will obtain his food at the Alpha Tau Omega fraternity and is sponsored by the Rotary Club of Augusta.

## DUFFIES TAVERN

"Where the Gang Gathers"

Corner W. Peachtree and 3rd St.

For Your Dancing Pleasure

## WALT CUNNINGHAM & HIS ORCHESTRA

Call VERNON 3105

## The Prescott Restaurant

533 W. Peachtree St.

Next to Nurses' Home

AIR CONDITIONED

55c — One Meat and Three Vegetables and Drink — 55c  
Assortment of eight meats and fifteen vegetables

40c — BREAKFAST ANYTIME — 40c

One egg, bacon or sausage, grits, toast and jelly, coffee

We are now making pictures for the 1952 BLUE PRINT. Avoid the rush in the fall quarter by having yours made now. Come at your convenience.

## Gaspar-Ware Studio

876 West Peachtree  
VERNON 0931

## CAMPUS GRILL

Corner of Spring and North Avenue

Special

Lunch and Supper 55c

Choice 1 Meat,  
3 Vegetables, Hot Rolls

Open 6:30 A.M. to 8 P.M.  
Special Breakfast, 35¢

# EVANS FINE FOOD

RESTAURANT IN THE 800 PEACHTREE BLDG.

Peachtree Street, N. E.

ALSO 290 PONCE DE LEON AVENUE—NEAR ARGONNE