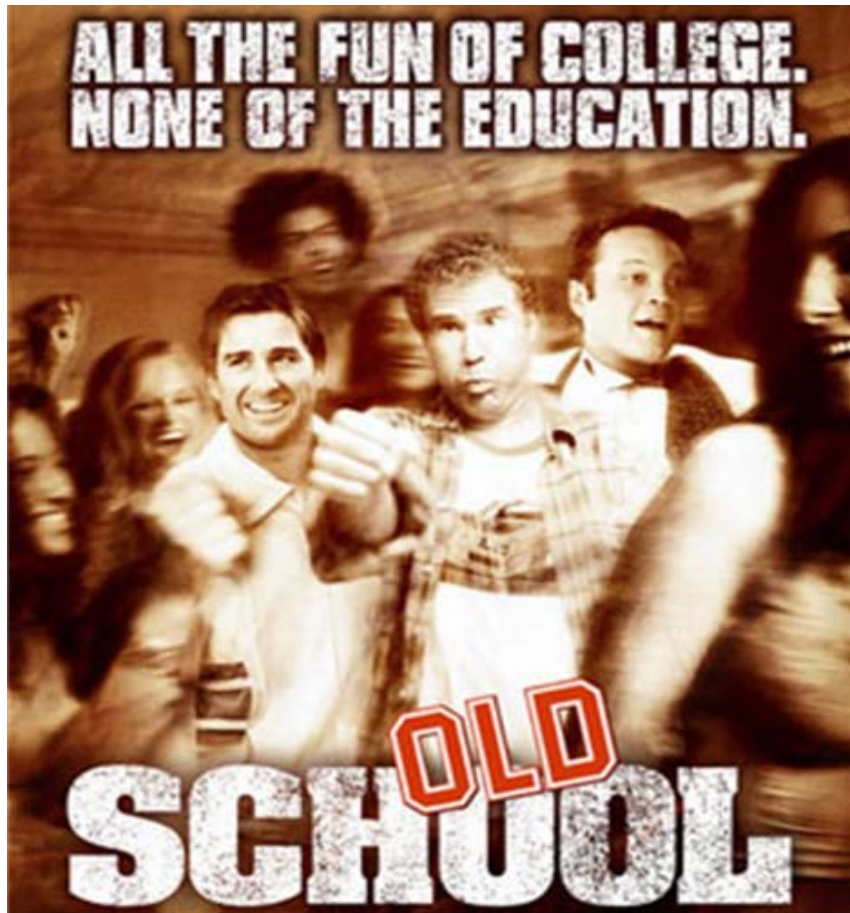
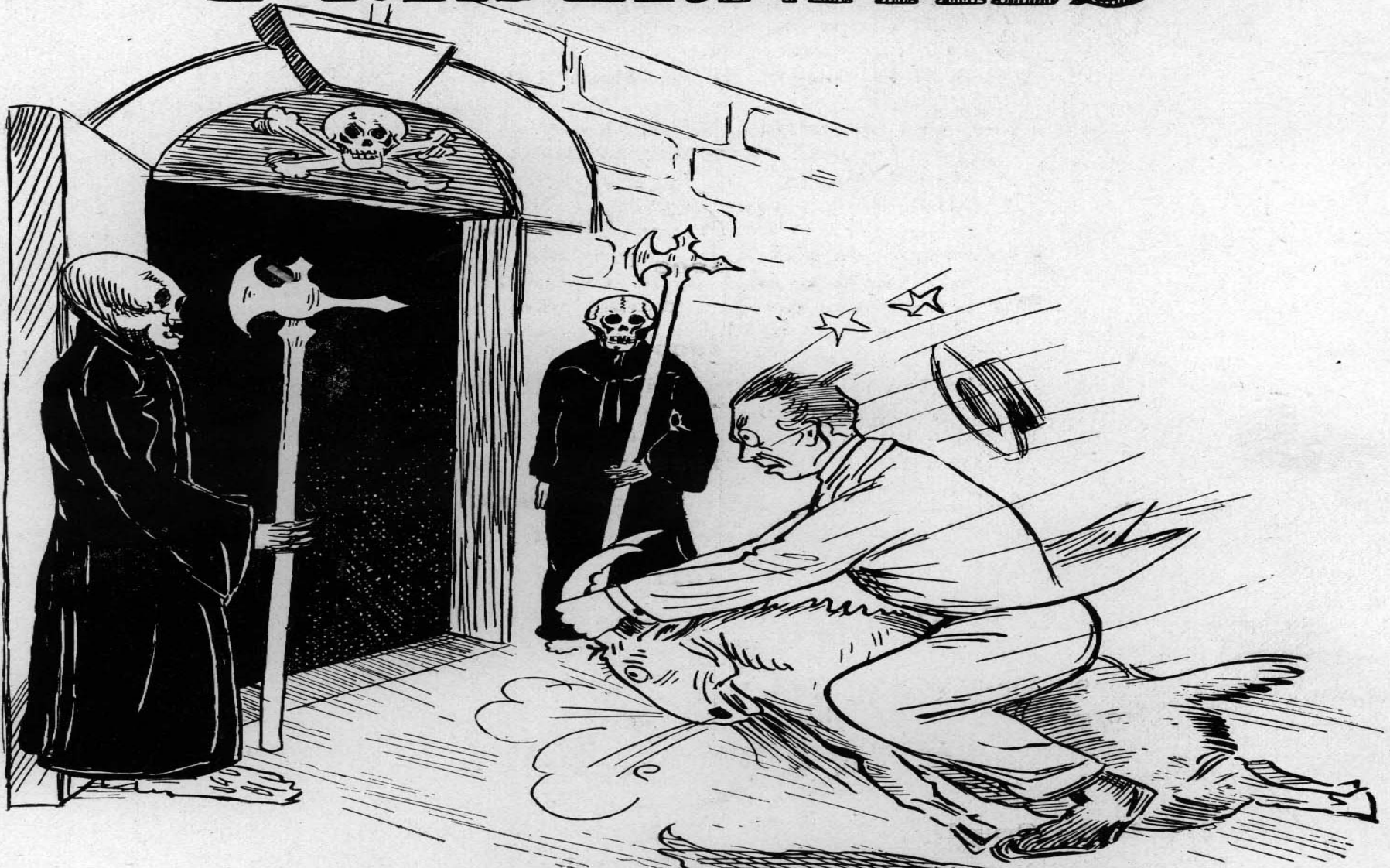


The Establishment of Fraternities at Georgia Tech



by Emily Beck
& Meg Morris

FRATERNITIES



"We're starting a fraternity..."

Parker -

Dr. Isaac S. Hopkins

- Tech's first President
- Previously President of Emory College at Oxford, GA
- Made honorary $AT\Omega$ at Emory

Alpha Tau Omega



- **Beta Iota Chapter**
- **Founded at Tech in 1888**
- **Colors: Old Gold and Sky Blue**
- **Flower: White Tea Rose**
- **Founded in Richmond, Va**
- **Sept. 11, 1865**
- **1st chapter at Virginia Military Institute**

Alpha-Tau Omega Fraternity.



Georgia Beta Kappa Chapter.

The Georgia Tech 1897

A

T

Ω



ALPHA TAU Omega FRATERNITY

A

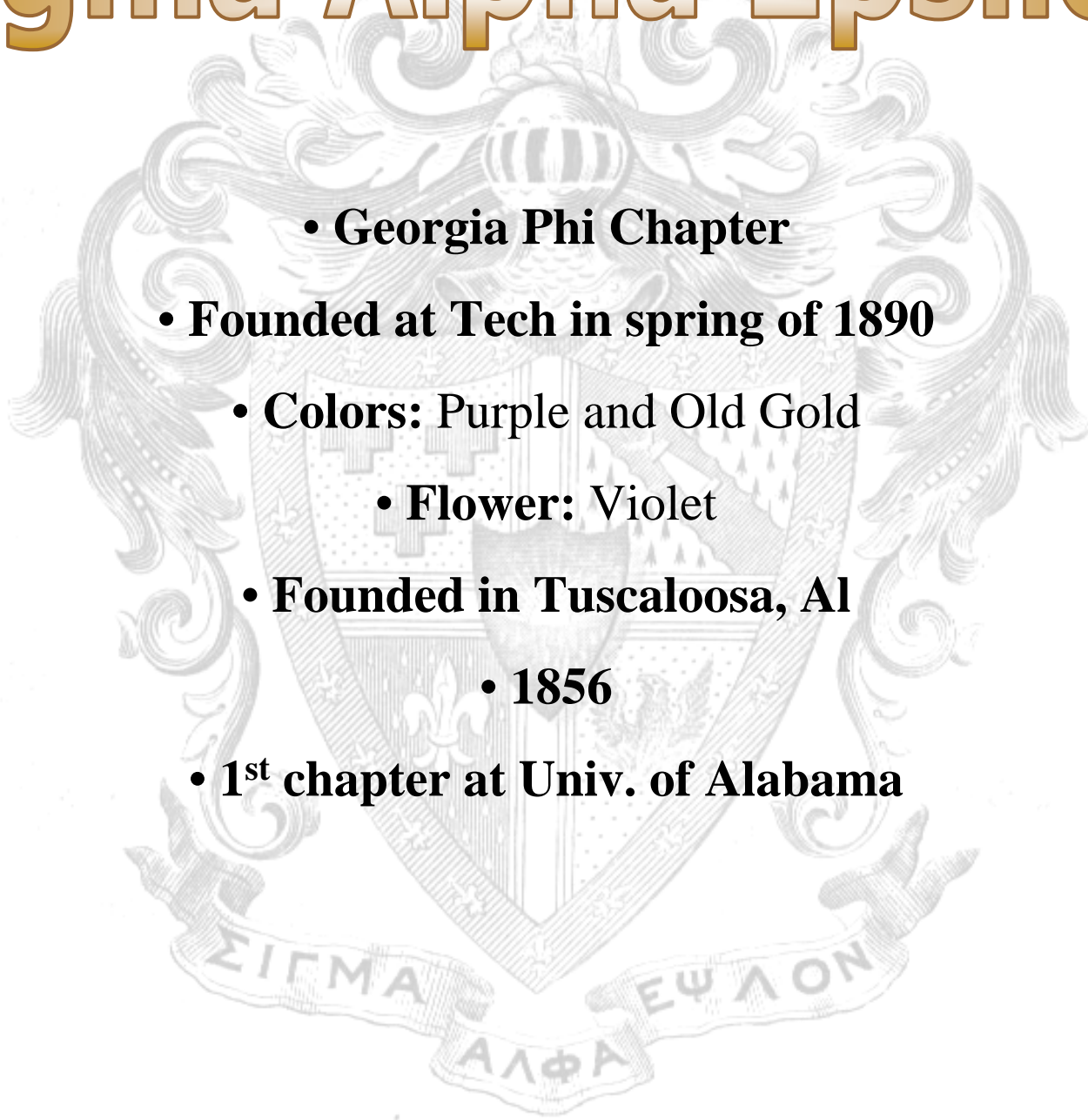
T

Ω

The Blueprint 1908

Sigma Alpha Epsilon

- Georgia Phi Chapter
- Founded at Tech in spring of 1890
- Colors: Purple and Old Gold
 - Flower: Violet
- Founded in Tuscaloosa, Al
 - 1856
- 1st chapter at Univ. of Alabama



Sigma Alpha Epsilon Fraternity.



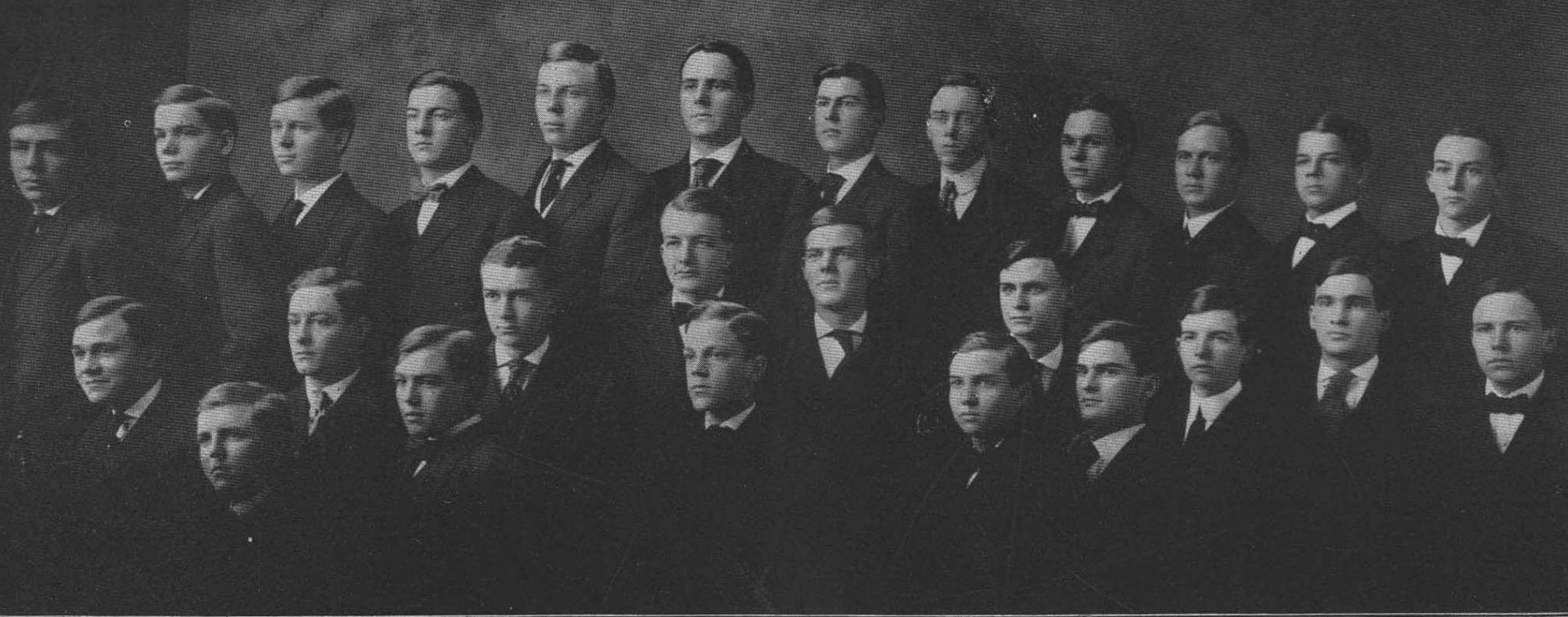
Georgia Phi Chapter.

The Georgia Tech 1897

Σ

A

E



SIGMA ALPHA EPSILON FRATERNITY

The Blueprint 1908

ΣΑΕ

Kappa Sigma



- **Alpha Tau Chapter**
- **Founded at Tech on Oct. 5, 1894**
- **Colors:** Maroon, Old Gold, and Peacock Blue
- **Flower:** Lily of the Valley
- **Founded in Charlottesville, Va**
- **1867**
- **1st chapter at Univ. of Virginia**

Founding of KapSig



Discovery of correspondence

1894 statistics:

150 Tech men

34 Greek affiliated

“...A good southern frat...”

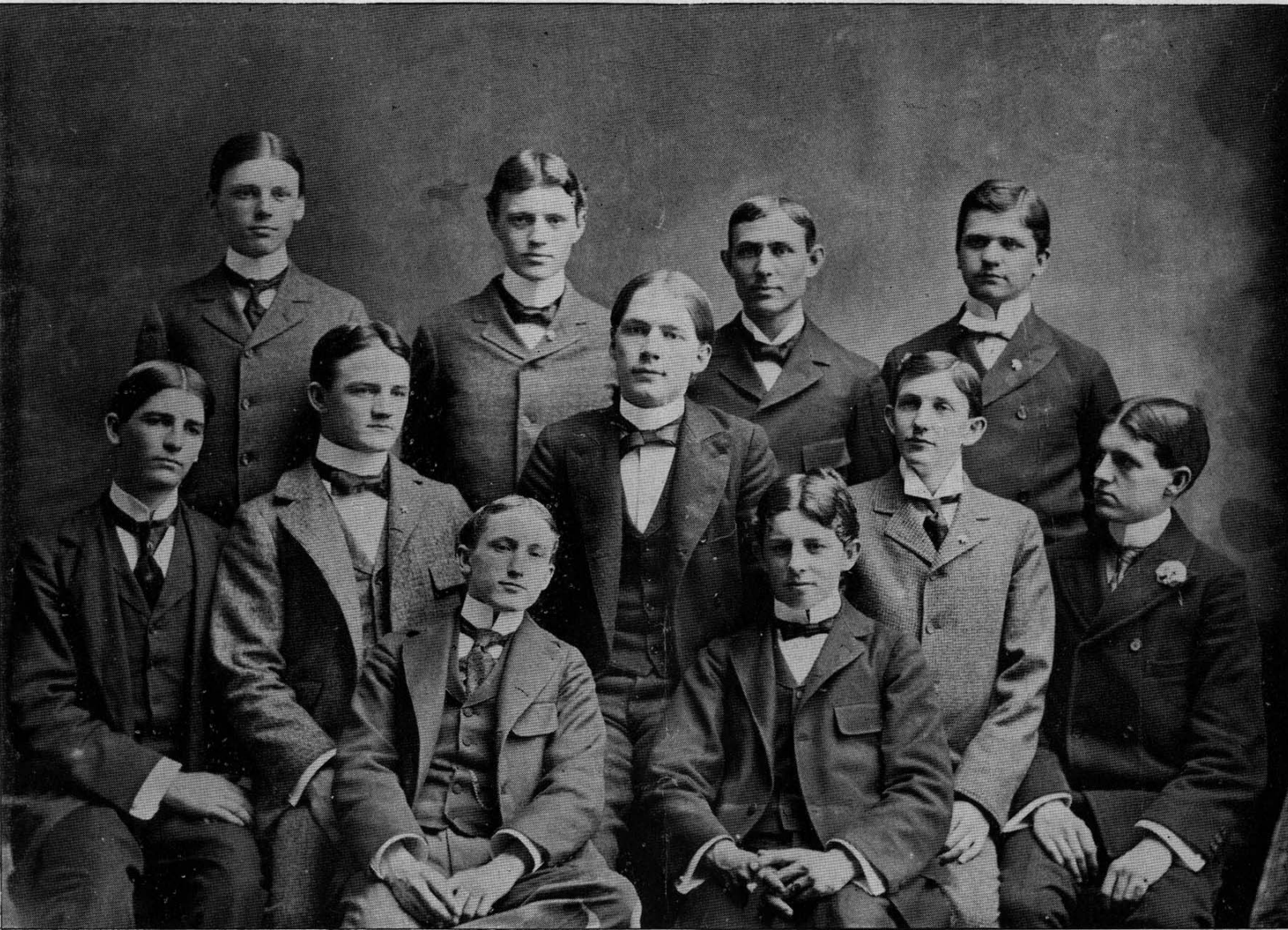
Confusion with founding dates

- Minutes log for KΣ dating 1896-1898
- The original charter for KΣ

- Roll of 89 votes
Kappa Psi Chapter
June 8, 1902
- Meeting called to order by Bro. Grand
Master Stout and after singing
by Kellogg some business was
transacted with.
- The fields of life insurance were
were proposed to be balloted upon
at this meeting.
- Motion by Bro. Seawall to present
him to take proceedings of the
conclude to Bro. Moody. Second.
- Bro. Trayer was appointed to place
wooden blocks under heater to place
Bro. Orin was elected heater to fill
to fill vacancy of G. M. C. caused
by withdrawal of Bro. Seawall.
- Motion by my floor for the purpose
of keeping records of different
members honorably withdrawn.
- After closing by Kellogg some
we proceeded to the work below.
- Prattville, Alabama
Apprentice Lodge
Grand Lodge



Kappa Sigma Fraternity.



Georgia Alpha-Tau Chapter.

K

Σ



KAPPA SIGMA FRATERNITY

The Blueprint 1908

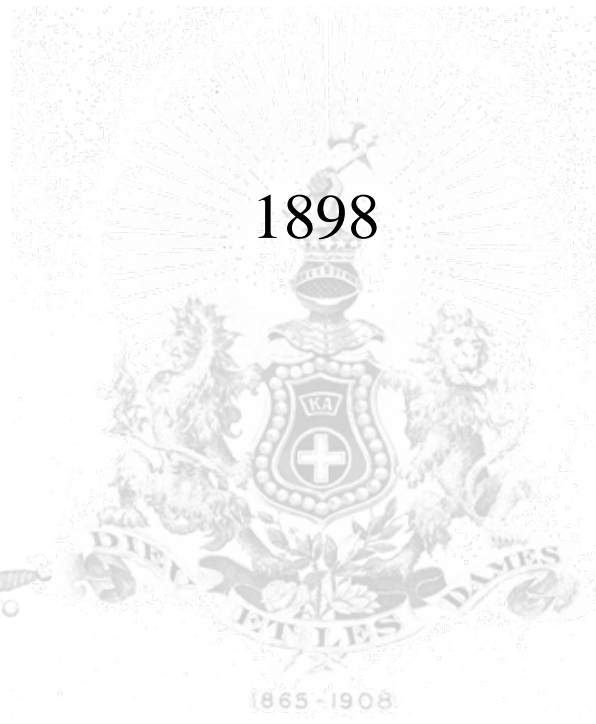
KΣ

More Fraternities

Sigma Nu Kappa Alpha Phi Delta Theta



1896



1898



1902

And More Fraternities...

Pi Kappa
Alpha

1904



Phi Kappa
Sigma

1904



Chi Phi

1904

Phi Kappa Sigma

The Skull House

- **Alpha Nu Chapter**
- **Founded at Tech on January 15, 1904**
 - **Colors: Black and Gold**
 - **Founded in Philadelphia**
 - **1867**
- **1st chapter at Univ. of Pennsylvania**



Fraternity Life



Meetings

- Friday or Saturday Nights
- “Leaves and Permits”

Houses and House Rules

A faded, sepia-toned photograph of a historic building with a prominent clock tower. In the foreground, there are tracks for a streetcar or trolley system, with a trolley visible on the right. The building has multiple stories and a complex roofline with gables and dormers.

- Strict rules
- Most houses where I-75/85 now stands
- Served as meeting place then grew into a dormitory

Pledgeship



- Hate Week
- Rolling Pledgeship and Initiation
- Short pledge periods

Social

- Washington Seminary
- Strict social rules
- Combined fraternity parties

Rivalries

The background of the slide is a faded, grayscale image of a college campus. It features a large, multi-story building with a prominent clock tower on the left side. The building has many windows and a classic architectural style. In the foreground, there are some trees and what appears to be a path or a field. The overall tone is nostalgic and academic.

- Intramural baseball and football
- “The Frats get more and more sorry as they multiply...”
- Fights between Fraternities

Varsity Sports

The background of the slide is a faded, sepia-toned photograph. It shows a large, multi-story school building with a prominent clock tower on the left side. In the foreground, there is a sports field, possibly a baseball or softball field, with a chain-link fence visible. The overall tone is nostalgic and institutional.

- Baseball
- Football
- Time Commitment

Well it's Up with the White and Gold, Down with the Red and Black

ΑΕΠ ΑΦΑ ΑΤΩ ΒΘΠ ΧΨ ΔΧ ΔΣΦ ΔΤΔ ΔΥ ΚΑ ΚΣ

ΛΧΑ

ΦΔΘ

ΕΙΙ

ΦΚΨ

ΦΚΣ

ΦΚΤ

ΦΚΘ

ΦΣΚ

ΠΚΑ

ΠΚΦ

Greek Community 2Κ3

**International Fraternity Council
& Panhellenic**

ΨΥ ΣΧ ΣΝ ΣΦΕ ΤΚΕ ΘΧ ΘΞ ΖΒΤ

ΑΓΔ

ΑΔΠ

ΑΧΩ

ΑΞΔ

ΦΜ

ΖΤΑ

Homecoming



Greek Week



Social



Philanthropy



