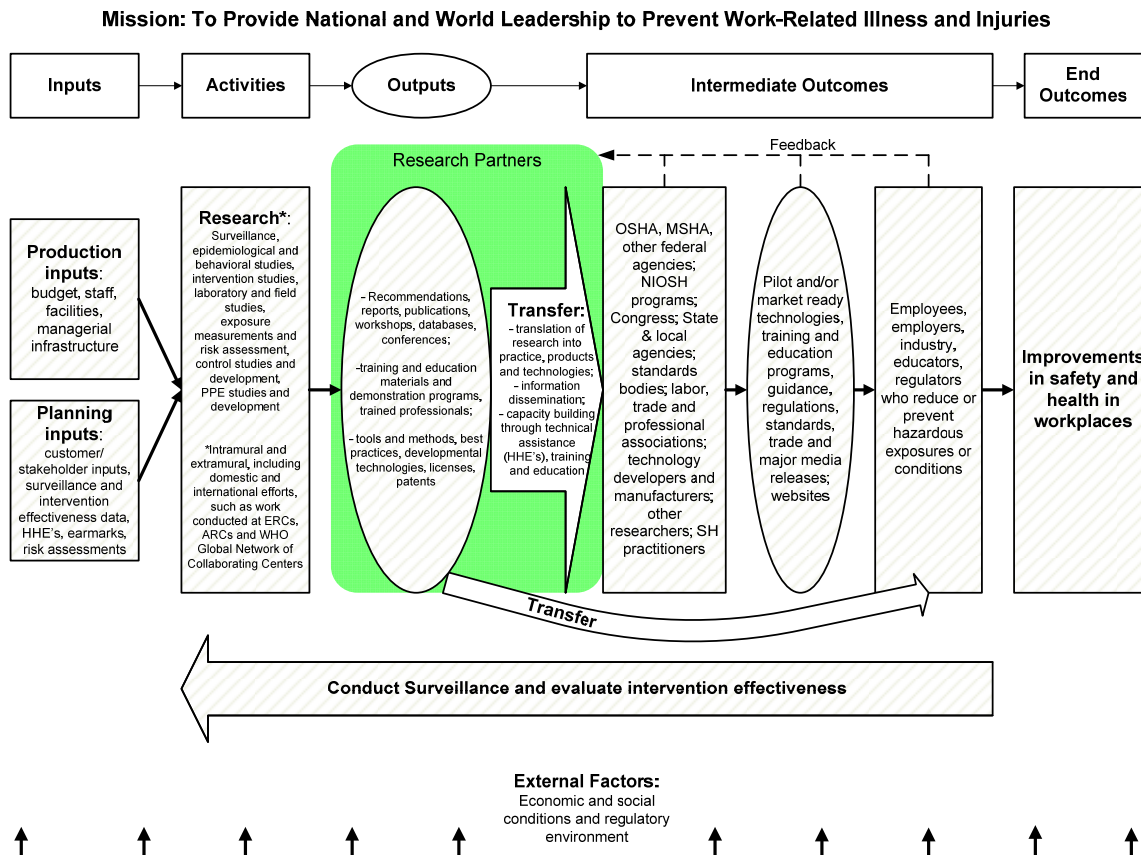


Figures to accompany  
 Susan Cozzens, "Social Impact Assessment in U.S. S&T Policy," March 12, 2010  
 Prepared for Workshop SIAMPI, Amsterdam, Netherlands

## The NIOSH Logic Model



Committee on the Review of NIOSH Research Programs; Institute of Medicine and National Research Council. "Evaluation Occupational Health and Safety Research Programs: Framework and Next Steps." Washington, DC: National Academy Press, 2009.

## Department of Energy Influence in Wind Energy Commercialization

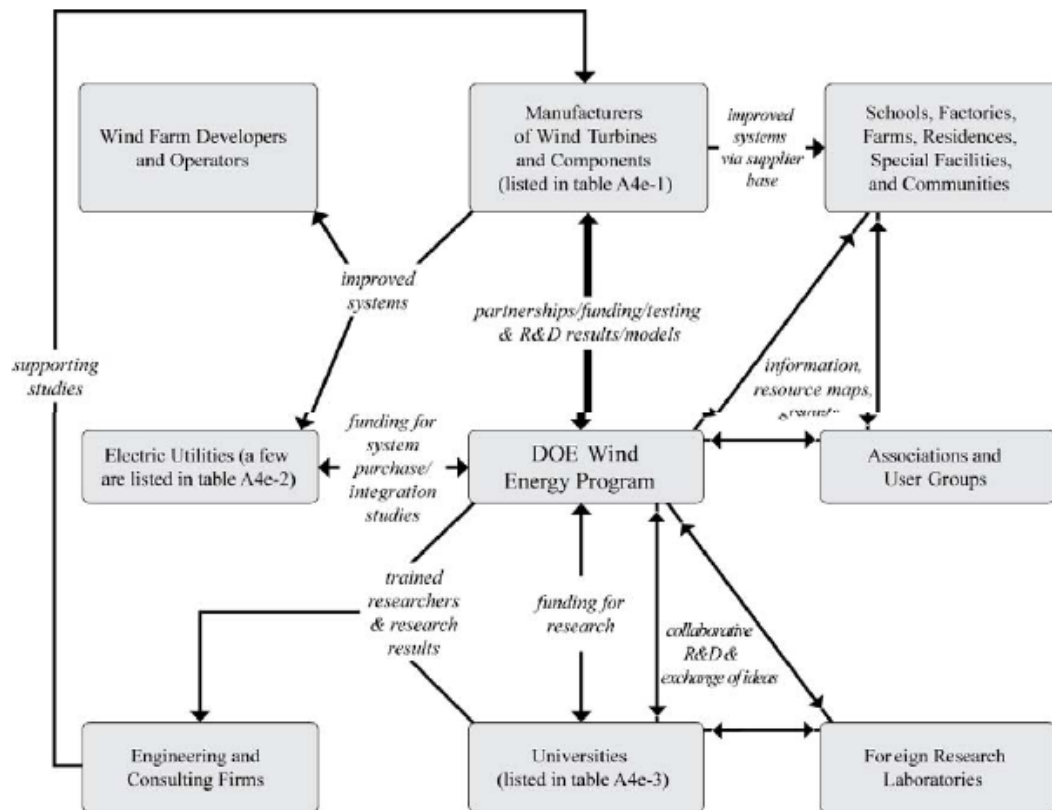
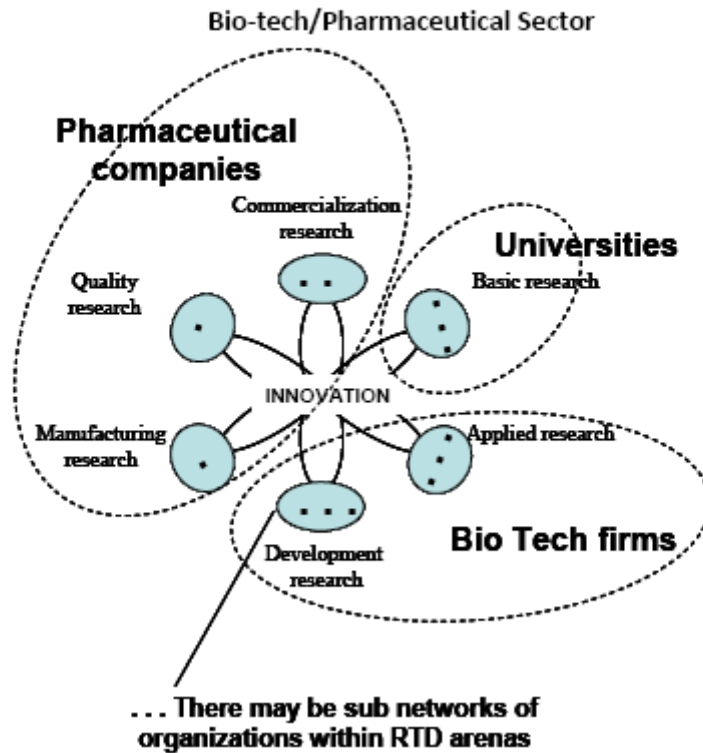


Figure 2. Network of relationships between DOE Wind Energy Program and others

From Rosalie Ruegg and Patrick Thomas, “Tracing Government Funded Research in Wind Energy to Commercial Renewable Power Generation,” Research Evaluation, December 2009.

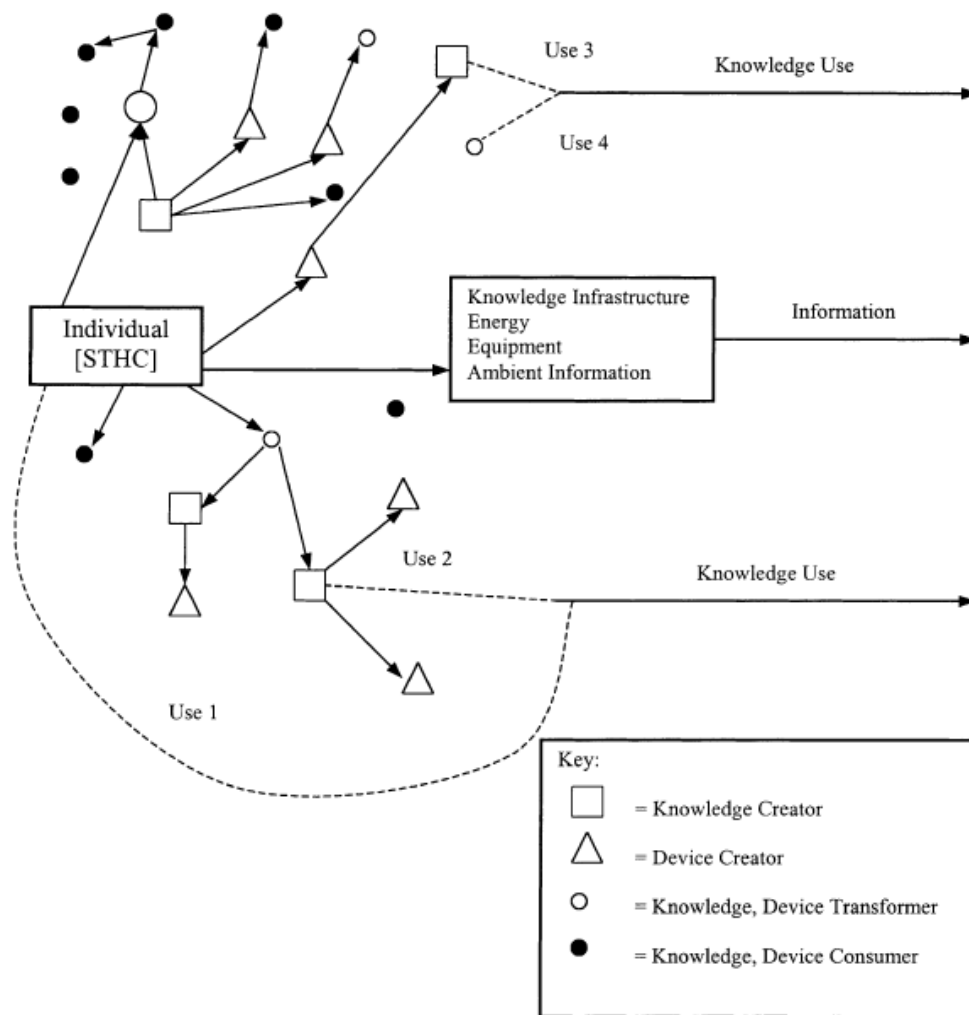
## An Illustrative Idea Innovation Networks

Figure Five: Idea Innovation Network Theory (Hage & Hollingsworth 2000)



From Jerald Hage, "Meso-Level Metrics for Impact: Metrics for the Treatment Sector or Meso Level of the Canadian Health Care System," appendix paper for Canadian Academy of Health Sciences, "Making an Impact: A Preferred Framework and Indicators to Measure Returns on Investment in Health Research," January 2009.

## The Churn Model: A Knowledge Value Collective



Source: Barry Bozeman and Juan Rogers, "A churn model of scientific knowledge value: Internet researchers as a knowledge value collective," *Research Policy* 31 (2002): 769-794, at page 777.