



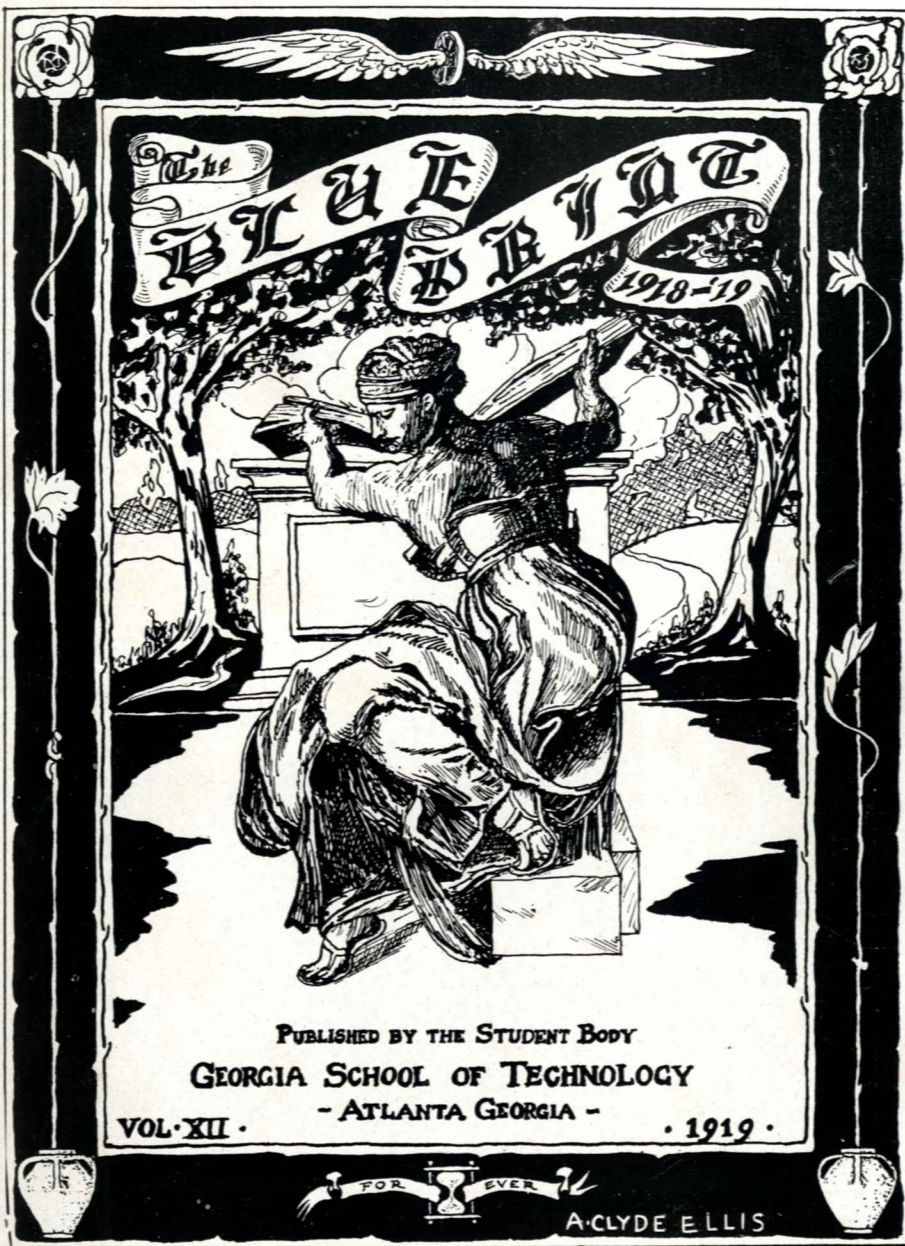
THE
BLUE PRINT
1919



Program

Georgia Tech Living History

The BLUE PRINT



19



19

The BLUE PRINT

VICTORY



19



19

The BLUE PRINT

Dedication

Men of Tech who ventured forth
In answer to the call,
To fight for freedom's pure light
Whatever may befall,
We give to you our gratitude
And owe to you a debt
That though we fear we cannot pay
Yet still we can't forget.

It matters not just where you were---
If on this side or France,
You did your bit and served us well
Whatever may bechance,
Therefore we dedicate to you
This volume of the life
That was enacted at old Tech
While you were in the strife.

19



19

The BLUE PRINT



A.C. CRYMBLE



G.L. JONES



T.D. ADKINS



R.G. SANDERS



F.C. OWENS



W.L. MEYER



F.H. WHELOCK

THE BLUE PRINT STAFF 1919



W.E. GEORGE



H.L. RICHARDS



G.R. FRASER



J.W. MCCULLOUGH



F.K. YORKE



P.H. NICHOLS



O. DAVIS



H. HIRSCH



T. MARSH



S.S. WALLACE

19



19

The BLUE PRINT

Blue Print Staff, 1919

F. C. OWENS *Editor-in-Chief*
W. L. McEVER *Business Manager*
H. L. RICHARDS *Advertising Manager*
T. D. ADKINS *Staff Artist*
R. G. SANDERS *Assistant Editor*

ASSOCIATE EDITORS

WALLACE, S. S. JR.	GEORGE, W. E.
HIRSCH, H. I.	FRASER, G. R.
DAVIS, O.	YORKE, F. R.

BUSINESS DEPARTMENT

JONES, G. L.	McCULLOUGH, J. W.
NICHOLS, P. H.	MARSH, S. T.
CRYMBLE, A. C.	WHELOCK, F. H.

TWELVE YEARS OF THE BLUE PRINT

<i>Editor-in-Chief</i>		<i>Business Manager</i>
CHAPMAN, J. G.	1908	EMERSON, C. L.
EMERSON, C. L.	1909	LEGG, M. F.
LEGG, M. F.	1910	THIESEN, R. J.
HILL, DEAN	1911	BYRD, C. A.
HILL, DEAN	1912	BYRD, C. A.
HOLMES, W. C.	1913	MILNER, W. J.
LOGAN, J. A.	1914	FORESTER, D. M.
HILL, G. M.	1915	SAMS, B. J.
JOHNSTON, P. N.	1916	PREAS, J. H.
MOORE, W. W.	1917	PREAS, J. H.
HUMPHREYS, J. W.	1918	HOUSER, W. D.
OWENS, F. C.	1919	McEVER, W. L.

19



19

The BLUE PRINT



FOREWORD

We have hoped, in the Blue Print for 1919, to faithfully mirror the life and activities at Tech during the past year and to record the part Tech was taking in the World Conflict. The part played by the present student body was small. Our training had almost just begun when the Central Powers crumbled and the phrase "Saved at the College" expresses the bitter feelings of some at not having the opportunity to do more. But this student body matriculated last fall with the one idea of service. They hoped, we believe to a man, to be in school for a few months only and then to win a transfer to fields of more active duty. In the comparatively short time that we were in the service quite a number realized this ambition.

Of these and other sons of Tech who went before we have had numerous reports, and we are proud of the way in which they upheld their Alma Mater's traditions of achievement. They helped to spread the good name of Tech to all parts of the country, and to Europe. For those who fell in battle we have a gold star and a salute and the highest honor for the manner in which they carried on.

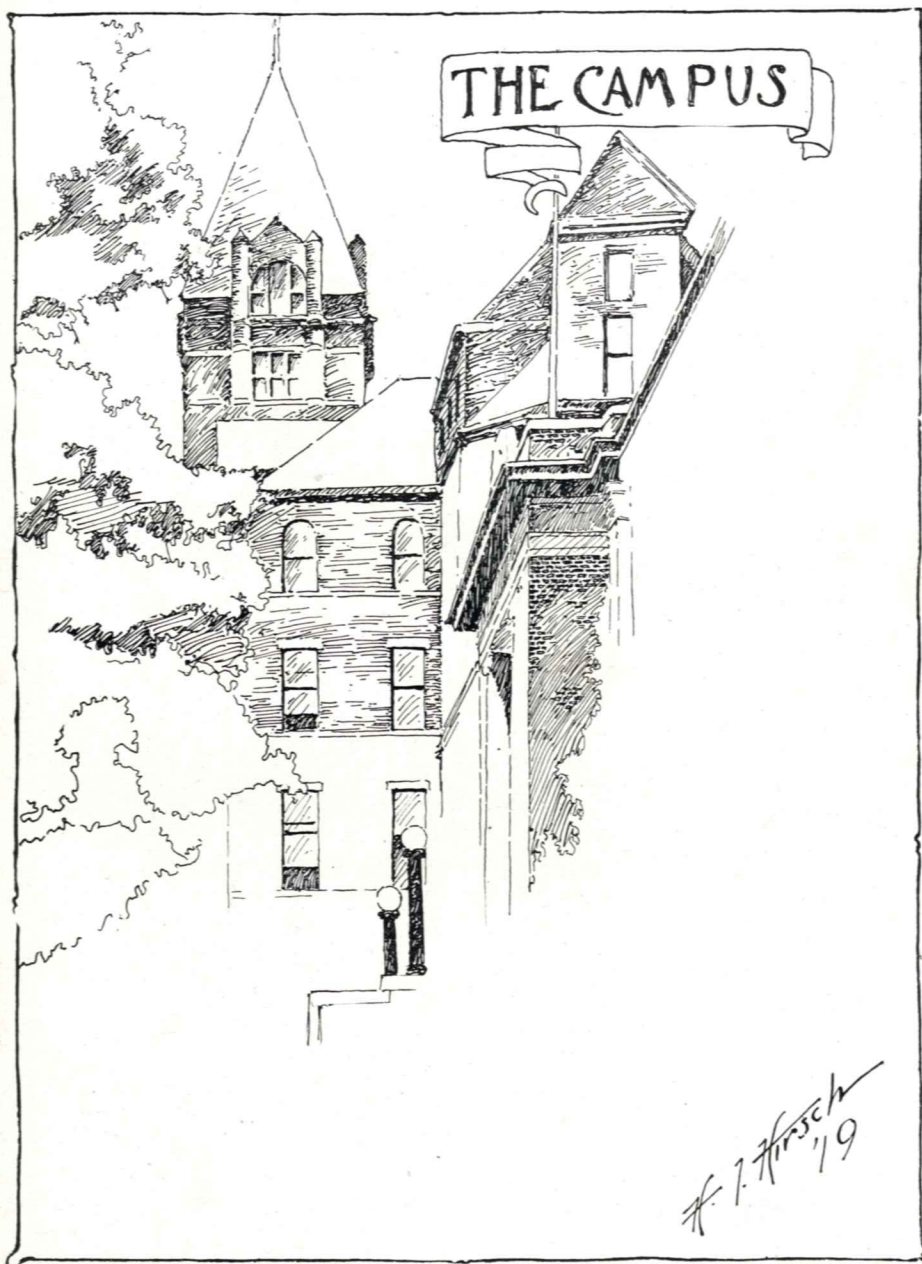
The routine of the school was disturbed by our military preparations and the Blue Print staff was unavoidably late in getting to work. We hope no apology is necessary, but if you find the book in any way lacking, before the old alibi is shelved for good let us use it once again. *C'estant la guerre.*

19



19

The BLUE PRINT

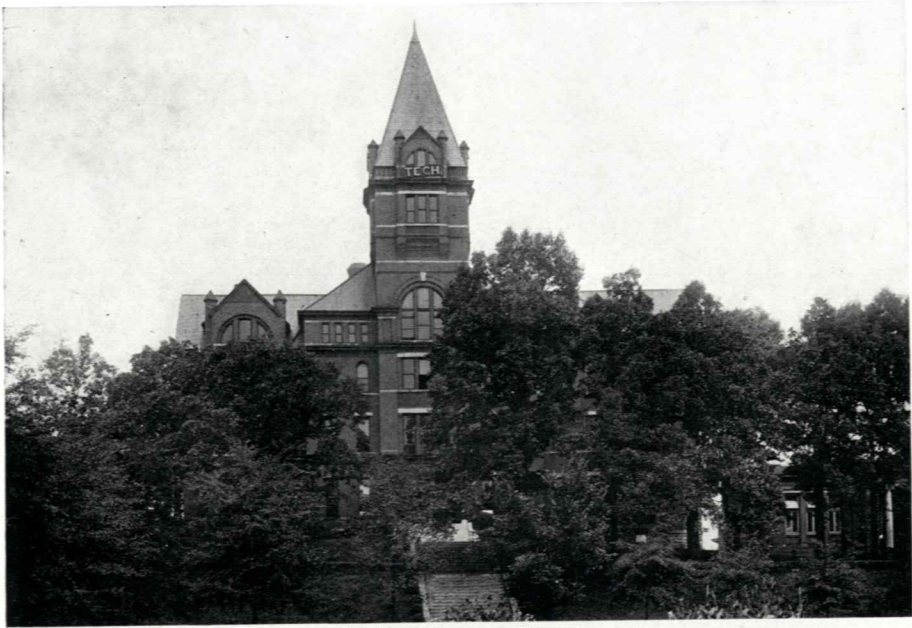


19



19

The BLUE PRINT



ACADEMIC BUILDING



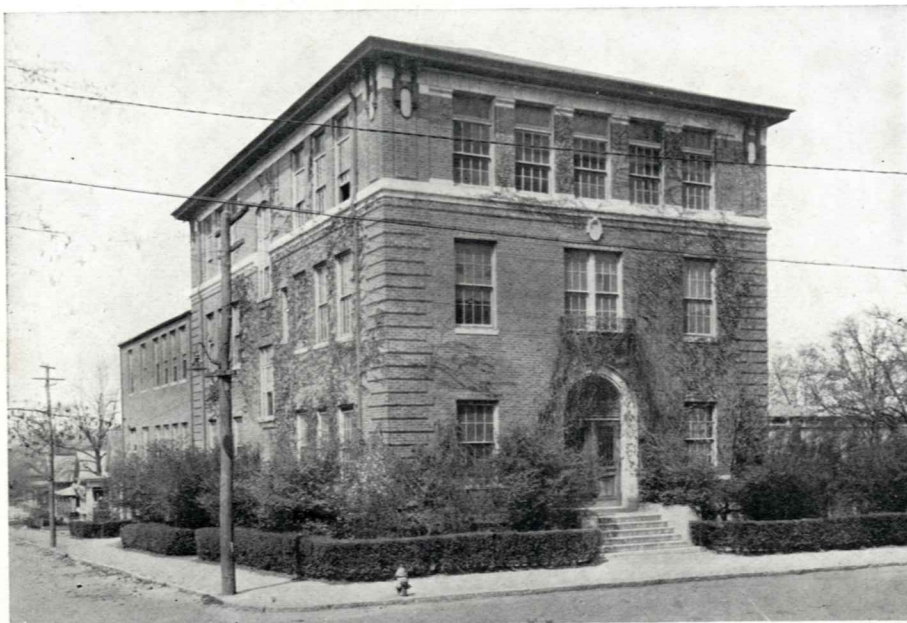
POWER PLANT

19



19

The BLUE PRINT



MECHANICAL BUILDING



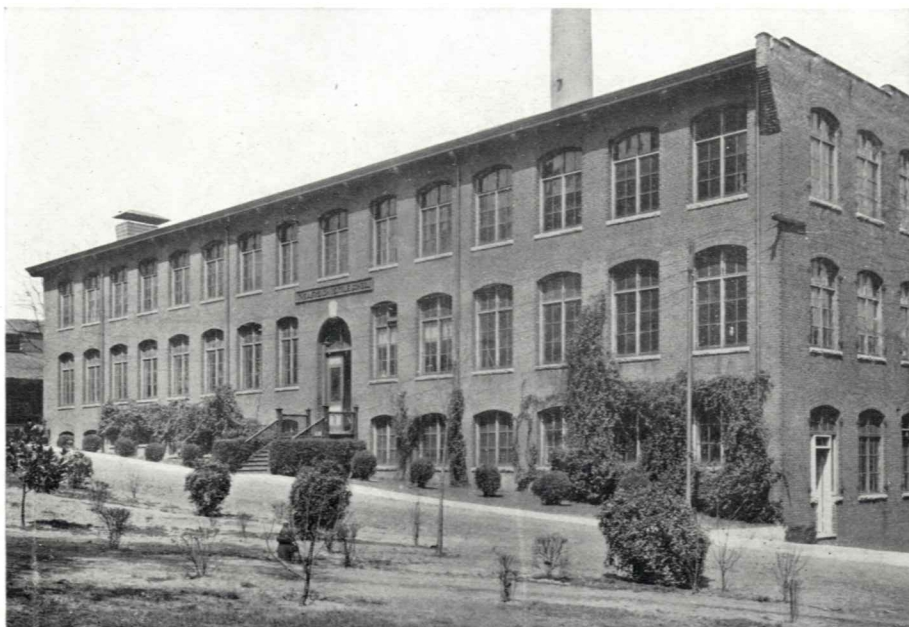
ELECTRICAL BUILDING

19

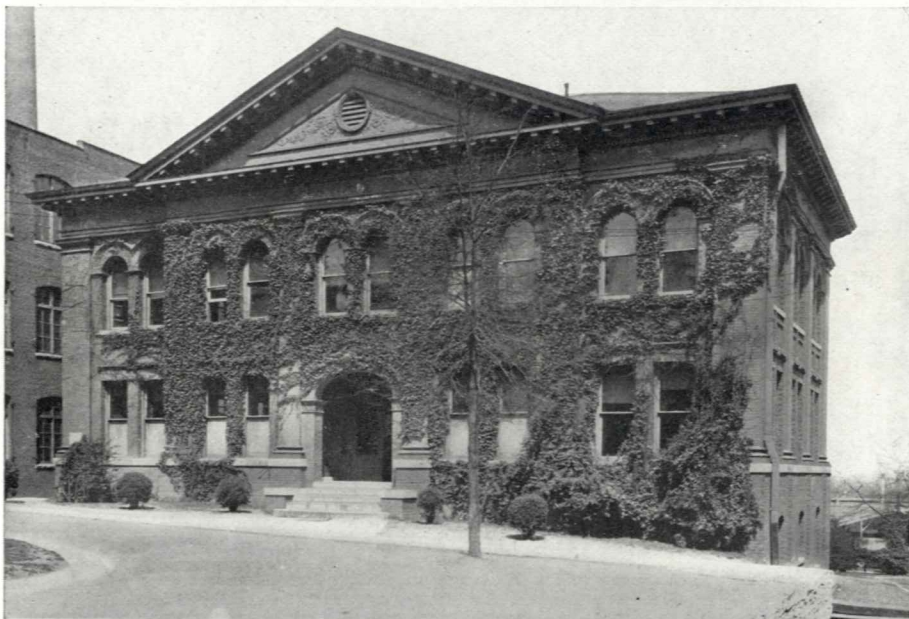


19

The BLUE PRINT



TEXTILE BUILDING



CHEMICAL LABORATORY

19



19

The BLUE PRINT



CARNEGIE LIBRARY



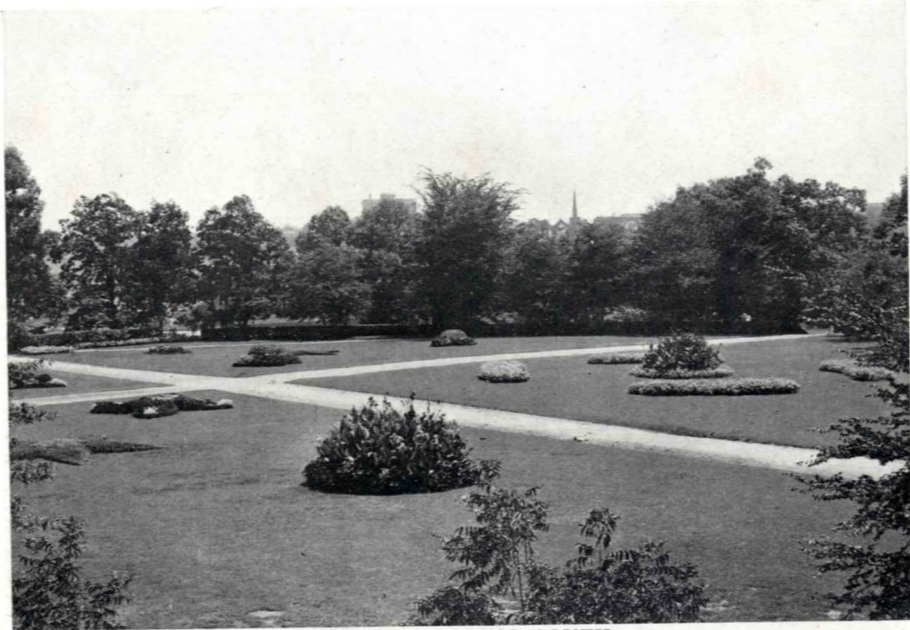
SWAN DORMITORY

19



19

The BLUE PRINT



CAMPUS—LOOKING SOUTH



CAMPUS—LOOKING WEST

19



19

The BLUE PRINT

FACULTY



19



19

The BLUE PRINT



DR. W. H. EMERSON



PROF. W. VERNON SKILES



DR. W. G. PERRY



PROF. C. P. ELDRED

19



19

The BLUE PRINT

Faculty

KENNETH GORDON MATHESON, A.M., LL.D.
A.M., Leland Stanford University; LL.D., Washington and Lee University; Kappa Alpha
President

WILLIAM HENRY EMERSON, Ph.D., Sc.D.
Ph.D., Johns Hopkins University; Sc.D., University of Georgia; Phi Kappa Phi; Alpha Tau Omega
Dean and Professor of Chemistry

JOHN SAYLER COON, M.E., Sc.D.
M.E., Cornell University; Sc.D., University of Georgia; Youngest charter member of the
American Society of Mechanical Engineers; Phi Kappa Phi; Sigma Xi
Professor of Mechanical Engineering; Superintendent of Shops

THOMAS PETTUS BRANCH, B.E.
B.E., Vanderbilt University; Beta Theta Pi
Professor of Civil Engineering; Secretary of Faculty

JOHN BASCUM CRENSHAW, A.M., Ph.D.
A.M., Randolph-Macon College; Ph.D., Johns Hopkins University; University of Berlin
Professor of Modern Languages

SAMUEL STUART WALLACE, A.M., A.B., Litt.D., Ph.D.
A.B., Dickinson College; A.M., Columbia University; Litt.D., Ph.D., University of Georgia;
Theta Delta Chi
Professor of English and Superintendent of Dormitories

FLOYD FIELDS, A.B., A.M.
A.B., Willamette University; A.B., A.M., Harvard University
Professor of Mathematics

FRANCIS PALMER SMITH, B.S. in Architecture
B.S. in Architecture, University of Pennsylvania; Phi Kappa Phi; Sigma Xi
Professor of Architecture

RICHARD HENRY LOWNDES, B.S. in M.E.
B.S. in M.E., Georgia Tech; Chi Phi
Professor of Drawing

DANIEL STANLEY ELLIOTT, A.M., Ph.D.
A.M., Ph.D., Johns Hopkins University; Fellow in Physics, Johns Hopkins University;
Phi Kappa Phi; Gamma Alpha
Associate Professor of Physics

ROBERT DAVIS KNEALE, B.S. in C.E., C.E.
B.S. in C.E., Purdue University; C.E., Columbia University; Sigma Pi
Professor of Highway Engineering

19



19

The BLUE PRINT

Faculty

JOHN MADISON WATTERS, B.S., B.C.S., LL.D.
B.S., Hall Moody; B.C.S., New York University; LL.D., Memphis University of Law School
Professor of Commerce

CALVIN POWELL ELDRED, S.B.
S.B., Massachusetts Institute of Technology
Professor of Electrical Engineering

ROY STEPHESON KING, M.E., M.S.
M.E., Ohio State University; M.S., University of Minnesota; Sigma Xi
Professor of Experimental Engineering

CLARENCE BERNARD SEAL
Professor of Textile Engineering

JOHN LAWRENCE DANIELS, M.A.
M.A., Washington and Lee University
Assistant Professor of Chemistry

GILBERT HILLHOUSE BOGGS, B.S., PH.D.
B.S., University of Georgia; Ph.D., University of Pennsylvania; Phi Beta Kappa; Sigma Xi
Associate Professor of Chemistry

WILLIAM GILMER PERRY, A.B., A.M., LITT.D.
A.B., A.M., Litt.D., Davidson College; Phi Kappa Phi; Kappa Alpha
Associate Professor of English

WILLIAM VERNON SKILES, S.B., M.A.
S.B., University of Chicago; M.A., Harvard University; Phi Beta Kappa; Beta Theta Pi
Assistant Professor of Mathematics

EDMOND WEYMAN CAMP, B.S. in T.E.
B.S. in T.E., Georgia Tech
Associate Professor of Textile Engineering

DAVID MELVILLE SMITH, A.B., A.M., PH.D.
A.B., A.M., Vanderbilt University; Ph.D., University of Chicago; Phi Beta Kappa; Sigma Xi,
Phi Kappa Phi; Kappa Sigma
Assistant Professor of Mathematics

ROY D. HUXLEY, S.B., S.M., ENG.D.
S.B., S.M., Eng.D., Massachusetts Institute of Technology
Associate Professor of Electrical Engineering

ALLEN BENTON MORTON, A.B., A.M.
A.B., A.M., Brown University; Phi Beta Kappa; Phi Kappa Phi
Assistant Professor of Mathematics

19



19

The BLUE PRINT

Faculty

LEE MELVILLE STERNE, B.S. in Chemistry
B.S. in Chemistry, Georgia Tech; Phi Epsilon Pi
Instructor of Chemistry

CHARLES HERBERT GAILEY, B.S., M.S. in Architecture
B.S., M.S. in Architecture, University of Pennsylvania
Assistant Professor of Architecture

CHARLES W. LYTLE, M.E.
M.E., University of Cincinnati
Assistant Professor of Experimental Engineering

ROGER SHEPPARD HOWELL, B.S. in M.E.
B.S. in M.E., Georgia Tech; Phi Kappa Phi
Assistant Professor of Electrical Engineering

REUBEN W. ALLEN
University of Georgia; University of Illinois
Assistant Professor of Chemistry

ARTHUR HAMMOND ARMSTRONG, A.B., A.M.
A.B., Yale University; A.M., Columbia University; Beta Theta Pi
Assistant Professor of English

CHARLES ALFRED JONES, B.S. in T.E.
B.S. in T.E., Georgia Tech
Instructor of Textile Engineering and Dyeing

DAVID LESLE STAMY, A.B., A.M.
A.B., Ursinus; A.M., University of Chicago
Instructor of Mathematics

HENRY B. WHITNER, B.S. in C.E.
B.S. in C.E., Georgia Tech
Instructor in Civil Engineering

WILLIAM E. GODFREY, A.M.
A.M., Cornell University; Sigma Alpha Epsilon
Assistant Professor of Physics

CARLYLE PEEK, B.S. in Architecture
B.S., in Architecture, Armour Institute of Technology
Instructor of Drawing

H. S. HILLY, A.B.
A.B., Oxford University, England
Instructor of Labor Problems

19



19

The BLUE PRINT

Faculty

JOHN ROY BRANDON

Instructor in Textile Engineering

JAMES A. GROVES, B.S. in M. E.

B.S. in M.E., Auburn Polytechnic Institute

Instructor in Drawing

W. C. MATHIS, A.B.

A.B., University of Georgia

Instructor in Sanitary Engineering

ERNEST L. SCHWARTZ, S.B.

S.B., Massachusetts Institute of Technology

Instructor in Electrical Engineering

JAMES HUGH MCKEE, A.M., Ph.D.

A.M., Columbia University; Ph.D., Dickinson College; Phi Kappa Phi; Phi Beta Kappa

Phi Kappa Sigma

Instructor in English

W. ROY MACKAY, S.B.

S.B., Massachusetts Institute of Technology; Lambda Chi Alpha

Instructor in Physics

JOSEPH ABELARDE CAMPOAMOR, M.A.

M.A., University of Burges, Spain

Associate Professor of Modern Languages

LESTER COLLINS FARRIS, L.I., A.B., A.M.

L.I., A.B., George Peabody College for Teachers; A.M., Columbia University

Instructor of English

ROBERT LAW LASLEY, M.A., B.A.

M.A., B.A., University of North Carolina; Tau Kappa Alpha

Instructor of English

ANTHONY A. GAVEY, B.S.

Pennsylvania State College; Omega Epsilon

Instructor in Chemistry

GEO. A. BENGLEY

Instructor of Mathematics

HUBERT DE GROFEUR SHAW, A.B.

Harvard University

Instructor of Mathematics

19



19

The BLUE PRINT

Faculty

JOHN RUTHERLAND BYINGTON, C.P.A.
Instructor in Mercantile Credits and Accounting

CONNER T. JONES
Instructor in Salesmanship and Advertising

F. L. A. EICHELBERGER
Instructor of Foreign Produce

HAMILTON DOUGLAS, JR.
Instructor of Law

FRANK E. LOWENSTEIN
Instructor of Advertising

ROBERT GREGG, M.E.
M.E., Georgia School of Technology
Instructor of Industrial Management

MISS ANNIE T. WISE
Instructor in French

HUGH HARRIS CALDWELL, A.B.
A.B., Davidson College, Graduate Columbia University
Registrar

FRANK K. HOUSTON, C.P.A.
Bursar

MISS LAURA HAMMOND
Librarian

MISS JULIA HAMMOND
Assistant Librarian

MISS ESTELLE ALLEN
Secretary to Registrar

AUGUSTUS FLEETWOOD ROLLER, A.B.
A.B., University of Tennessee
Instructor in Chemistry

DAVID ERNEST PHILPOT
Instructor in Textile Mill

EDWARD BENBOW MARTINDALE
Principal Foreman; Foreman of Machine Shops

19



19

The BLUE PRINT

Faculty

HORACE ALONZA THOMPSON
Foreman of Smith Shop

WILLIAM VAN HOUTEN
Foreman of Foundry

JOHN HENRY HENIKA
Foreman of Woodshop

WILLIAM FELDER GRIFFIN
Chief Engineer; Instructor in Machine Shop

HOMER HARLAN NORMAN
Instructor in Woodshop

HENRY PRINTUP
Instructor in Woodshop

JOSEPH WARREN PATILLO
Instructor in Woodshop

AUGUSTUS THEODORE PEACOCK
Instructor in Machine Shop

MISS MINNIE LAFEVRE
Secretary to President

AUGUSTUS GEORGE ALLEN
Steward of the Dining Hall

ERNEST L. SECREST, A.B.
A.B., Trinity College; Kappa Alpha
General Secretary of the Y. M. C. A.

F. FOSTER BARNES
Assistant Secretary of the Y. M. C. A.

GEORGE M. HARRINGTON
Instructor in Highway Engineering

CHARLES LEWIS ARMSBY
Student Instructor in Architecture

HERBERT M. BURNHAM
Student Instructor in Drawing

19



19