

# Georgia Tech Research Institute

The Nonprofit Applied Research Arm of Georgia Institute of Technology

***“CREATING SOLUTIONS THROUGH INNOVATION”***

## **RESEARCH AND DEVELOPMENT WITH RESULTS**

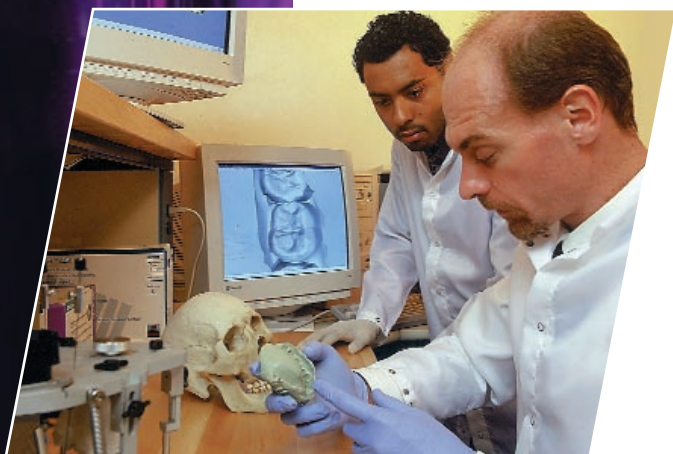
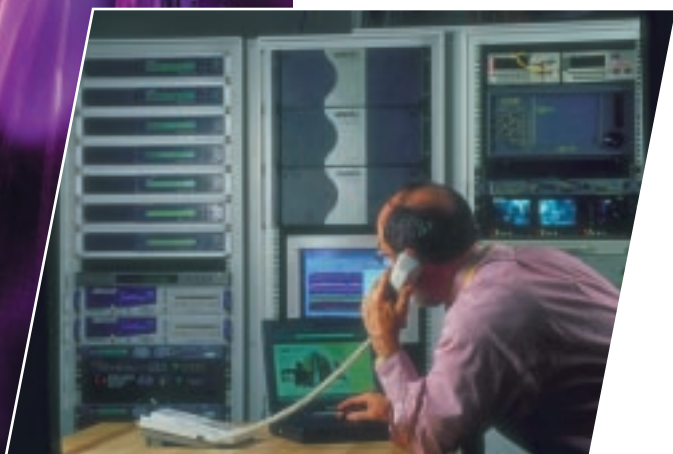
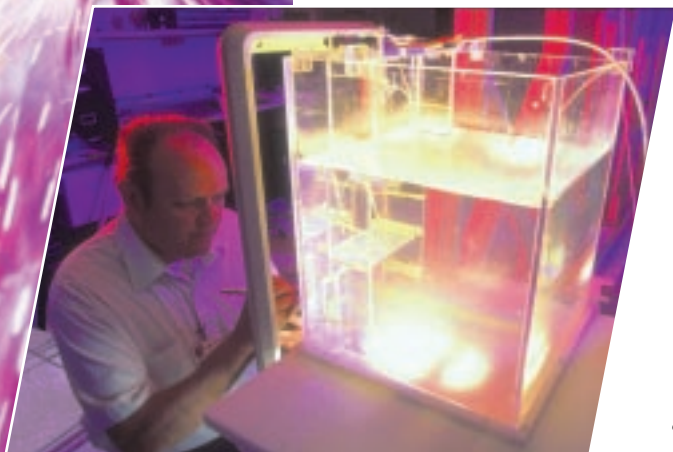
Let Georgia Tech Research Institute (GTRI) bring world-class research and development professionals to your next project. You can benefit from some of the most advanced facilities and leading-edge technology available today, putting them to work for you. GTRI provides the combined strength of an academic-based but business-savvy organization to support your applied R&D needs.

## **Who Is GTRI?**

GTRI is the nonprofit, applied research arm of Georgia Institute of Technology with a staff of over 1,100 and a proven track record of contributions to industry research and development. Our research professionals collaborate with Georgia Tech's world-class faculty to bring the best team to bear on complex system challenges.

## **WHAT GTRI CAN PROVIDE**

- Strength in product development – move from concept to real world solution
- Integration – pulling complex systems together
- Creativity – assessing and applying leading-edge technology
- Objectivity – no standard products or production interests
- Responsive – customer-focused staff – cost, schedule, and deliverables sensitive
- Value – state-of-the-art resources at Georgia Tech, a leading engineering research university





## FULL SPECTRUM OF R&D ACTIVITIES

- Concept development, feasibility / tradeoff analysis, and technology roadmapping
- Latest CAD hardware design (mechanical, electrical, optical)
- Software development (chip-level, embedded, system level, networks)
- System development / integration / training
- Rapid prototyping and simulation
- Preparation for production and process improvements
- Product testing, diagnostics, and preparation for certification
- Improved logistics, product quality assurance, & maintenance
- Sustainable and environmentally friendly solutions
- Specialized training and short courses



## WORLD-CLASS TECHNOLOGIES

- Acoustics
- Advanced and affordable electronics packaging
- Aerospace technology including UAVs
- Antennas and electromagnetic devices
- Biomedical engineering / Health sciences
- Broadband telecommunications and networking
- Data mining and knowledge management
- Decision support systems
- Fuel cells / Batteries
- Human factors and industrial safety
- Image analysis
- Information technology
- Laser, photodiode, phosphor, & other light emitters
- Opto-electronics and optical fiber instrumentation
- Sensors (Radar, EO, IR, Acoustic, Chemical, Biological)
- Solid-state materials and devices

## ALL IT TAKES IS A CALL

GTRI is at the cutting edge of technology and knows how to harness this to help create exciting new realities. We are good communicators who have the experience to make successful teamwork happen. GTRI is a unique resource that can solve your complex technology problems. To find out more, a call is all it takes.

### CONTACT:

**J. Tom Horton**  
 Manager, Industry/State Programs  
 Business Development Office  
 404-894-0239  
[tom.horton@gtri.gatech.edu](mailto:tom.horton@gtri.gatech.edu)  
[www.gtri.gatech.edu](http://www.gtri.gatech.edu)