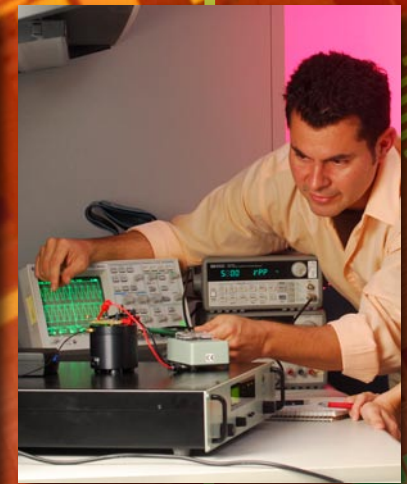


Graduate Programs



School of Electrical and
Computer Engineering

School of Electrical and Computer Engineering
777 Atlantic Drive NW
Atlanta, Georgia 30332-0250 USA
Tel: 404.894.2983 | Fax: 404.894.3047
graduate@ece.gatech.edu

www.ece.gatech.edu

**Georgia
Tech**

College of
Engineering

ECE @ Georgia Tech

The School of Electrical and Computer Engineering has the largest ECE graduate program in the U.S., and the College of Engineering at Georgia Tech is ranked among the **top five** in the nation. With over 110 faculty members at three campuses, ECE covers a broad range of research topics and offers a wide selection of courses. The School is home to **10 areas of specialization**, over 20 research centers and consortia, and numerous laboratories. In the last five years, ECE has averaged over **\$55 million** per year in corporate, governmental, and research foundation support.

Degree Options

Our graduates are among the most sought after in the world. We offer M.S.E.C.E. (non-thesis or thesis option) and Ph.D. degrees. Students may study at the main campus in Atlanta, Georgia Tech Savannah,



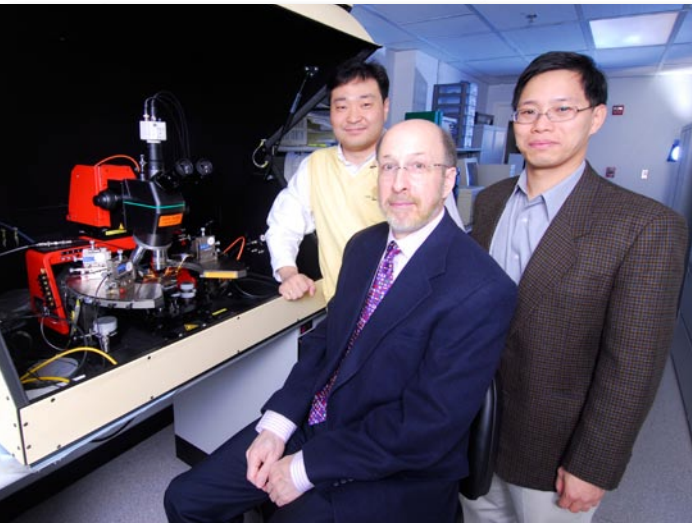
Georgia Tech Lorraine (GTL) in Metz, France, or Georgia Tech Shanghai in China.

ECE students may also choose from other **unique degree** options, including:

- **interdisciplinary** graduate degrees in bioengineering or robotics;

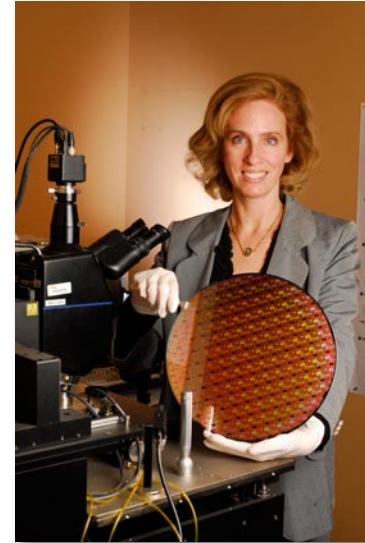


- **international** M.S. dual degree programs with GTL, Shanghai Jiao Tong University (China), or Politecnico di Torino (Italy); or
- the **online** master's degree in ECE.

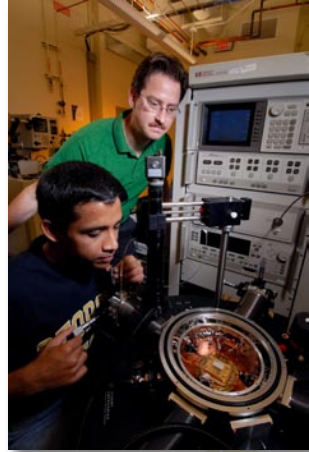


www.ece.gatech.edu

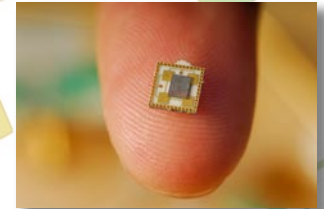
Areas of Specialization



Bioengineering
Computer Engineering
Digital Signal Processing
Electric Power
Electromagnetics
Electronic Design and Applications
Microsystems and Packaging
Optics and Photonics
Systems and Controls
Telecommunications



The School plays a **lead role** in interdisciplinary research centers—spanning diverse areas like robotics, solar power, high-speed electronics, network security, and bioengineering—where students can work as graduate research assistants. In addition, the Georgia Tech **Cooperative Education** and **Work Abroad** programs and the **Georgia Tech Research Institute** provide opportunities for valuable **work experience**.



Faculty

Our faculty members have won top teaching, research, and service awards from both Georgia Tech and outside organizations. Over 30 faculty members hold distinguished professorships, almost 40 percent are **Fellows of IEEE** and other professional societies, and five are members of the **National Academy of Engineering**.

